
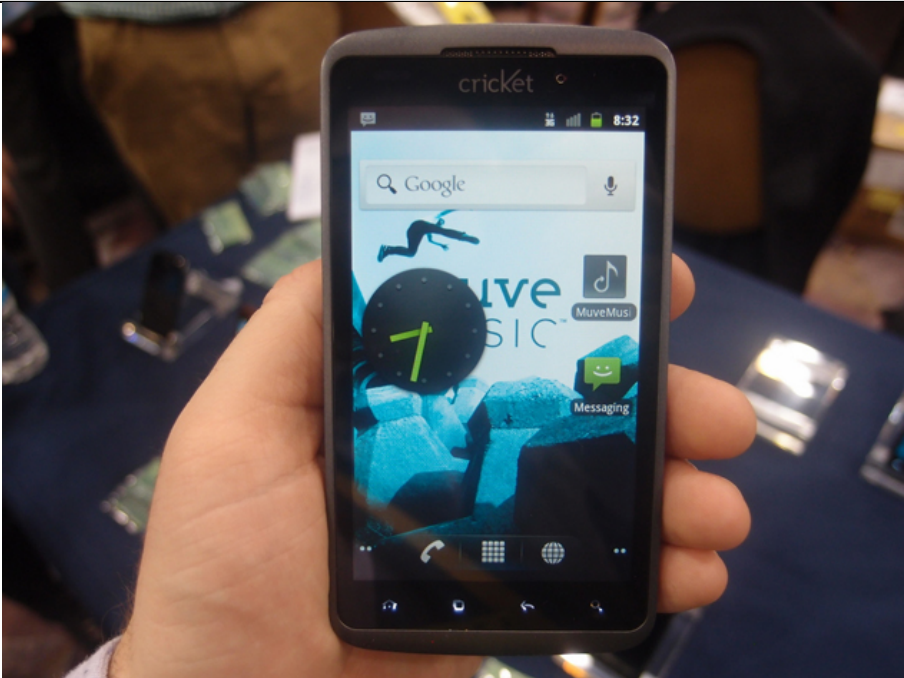


US RE 43,931	TCL Alcatel One Touch Ultra 960C (“Accused Instrumentality”)
1. A radiotelephone, comprising:	<p>The Accused Instrumentality is a radiotelephone.</p> <p>For example, the following citations show that the Accused Instrumentality supports voice and data services. Also, the Accused Instrumentality complies with CDMA standards, which shows that it is a radiotelephone.</p> <div data-bbox="685 421 801 536">  </div> <div data-bbox="945 437 1191 469"> <p><b>Mobile Features</b></p> </div> <div data-bbox="945 504 1599 539"> <p>Operation System: Android Gingerbread 2.3.5</p> </div> <div data-bbox="945 571 1568 606"> <p>Network: CDMA Tri-Band (BC0/BC1/BC15)</p> </div> <div data-bbox="945 638 1146 670"> <p>CPU: 1.4 Ghz</p> </div> <div data-bbox="945 702 1209 737"> <p>Wi-Fi: 802.11b/g/n</p> </div> <div data-bbox="945 769 1491 804"> <p>Bluetooth: 3.0 (HSP/HFP/A2DP/OPPI)</p> </div> <p><a href="http://www.alcatelonetouch.com/usa/products/smartphones/ot-960c.html">http://www.alcatelonetouch.com/usa/products/smartphones/ot-960c.html</a>;</p> <p>Your mobile phone is a transceiver that operates on following networks: CDMA in tri-band (850/1700/1900mhz (BC0/BC1/BC15)</p> <p>Alcatel One Touch Ultra 960C User Manual, p.11 (available at <a href="http://support.alcatelonetouch.com/Alcatel_Support_Files/Manuals/65d361d79432a2858ab65bfaf04e22291370271432.pdf">http://support.alcatelonetouch.com/Alcatel_Support_Files/Manuals/65d361d79432a2858ab65bfaf04e22291370271432.pdf</a>).</p>
a housing having a front surface, a rear surface and first and second side surfaces adjoining respective opposite edges of the front surface and extending from the respective opposite edges of the front surface	<p>The Accused Instrumentality comprises a housing having a front surface, a rear surface and first and second side surfaces adjoining respective opposite edges of the front surface and extending from the respective opposite edges of the front surface to respective opposite edges of the rear surface, the housing configured to be held in a user's hand such that the rear surface confronts the user's palm.</p> <p>For example, the following citations show that the Accused Instrumentality has a front surface, a rear surface and first and</p>

US RE 43,931	TCL Alcatel One Touch Ultra 960C (“Accused Instrumentality”)
<p>to respective opposite edges of the rear surface, the housing configured to be held in a user's hand such that the rear surface confronts the user's palm</p>	<p>second side surfaces adjoining respective opposite edges of the front surface and extending from the respective opposite edges of the front surface to respective opposite edges of the rear surface and the housing is configured to be held in a user's hand such that the rear surface confronts the user's palm.</p> <div data-bbox="705 410 1305 1070" data-label="Image"> <p>The image shows two views of a blue smartphone. The front view on the left shows a screen with a Google search bar, a blue background with square icons, and a dock with Twitter, Email, Gmail, and Facebook icons. The screen is framed by a black bezel. The side view on the right shows the phone's thickness. Dimension lines indicate the width is 68mm, the height is 127mm, and the thickness is 9.95mm.</p> </div> <p><a href="http://www.alcatelonetouch.com/usa/products/smartphones/ot-960c.html">http://www.alcatelonetouch.com/usa/products/smartphones/ot-960c.html</a>;</p> <p>The housing of the Accused Instrumentality is configured to be held in a user’s hand such that the rear surface confronts the user’s palm, as shown below:</p>

US RE 43,931	TCL Alcatel One Touch Ultra 960C (“Accused Instrumentality”)
	 <p data-bbox="647 917 1574 946"><a href="http://www.pcmag.com/slideshow_viewer/0,3253,l=306771&amp;a=306771&amp;po=6,00.asp">http://www.pcmag.com/slideshow_viewer/0,3253,l=306771&amp;a=306771&amp;po=6,00.asp</a>.</p>
a radiotelephone communications transceiver, supported by the housing	<p data-bbox="647 952 1971 981">The Accused Instrumentality comprises a radiotelephone communications transceiver, supported by the housing.</p> <p data-bbox="647 1018 2083 1082">For example, the following citations show that the Accused Instrumentality complies with the CDMA standard and is a radiotelephone. For a radiotelephone to perform voice and data services it needs to house a communications transceiver.</p>

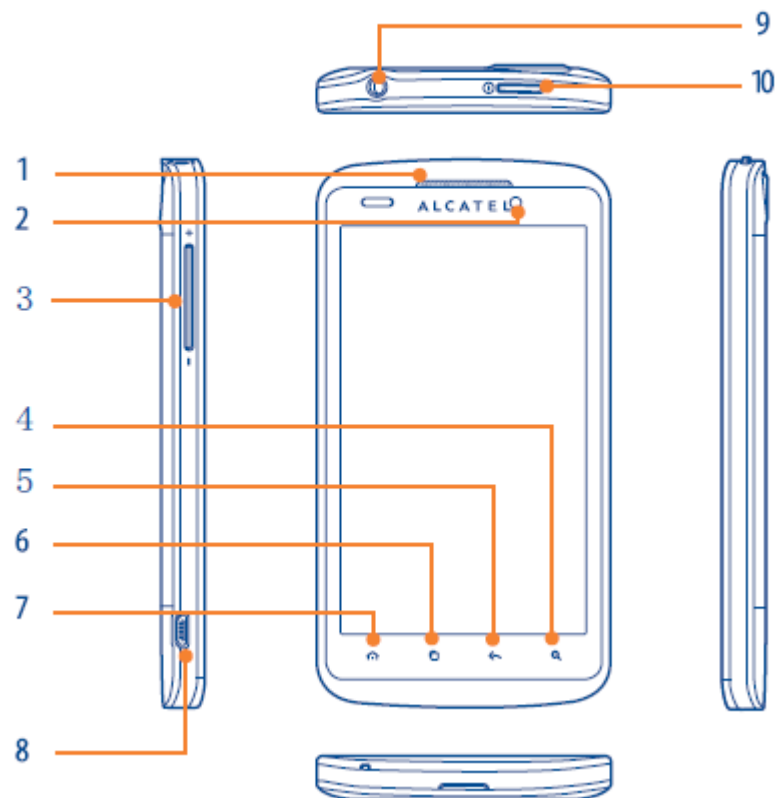
US RE 43,931	TCL Alcatel One Touch Ultra 960C (“Accused Instrumentality”)
	<div data-bbox="685 252 801 368" data-label="Image"> </div> <div data-bbox="947 268 1189 300" data-label="Section-Header"> <p><b>Mobile Features</b></p> </div> <div data-bbox="947 331 1599 371" data-label="Text"> <p>Operation System: Android Gingerbread 2.3.5</p> </div> <div data-bbox="947 400 1568 440" data-label="Text"> <p>Network: CDMA Tri-Band (BC0/BC1/BC15)</p> </div> <div data-bbox="947 469 1146 501" data-label="Text"> <p>CPU: 1.4 Ghz</p> </div> <div data-bbox="947 531 1209 571" data-label="Text"> <p>Wi-Fi: 802.11b/g/n</p> </div> <div data-bbox="947 600 1491 639" data-label="Text"> <p>Bluetooth: 3.0 (HSP/HFP/A2DP/OPPI)</p> </div> <div data-bbox="647 663 1588 699" data-label="Text"> <p><a href="http://www.alcatelonetouch.com/usa/products/smartphones/ot-960c.html">http://www.alcatelonetouch.com/usa/products/smartphones/ot-960c.html</a>;</p> </div> <div data-bbox="674 743 1684 831" data-label="Text"> <p>Your mobile phone is a transceiver that operates on following networks: CDMA in tri-band (850/1700/1900mhz (BC0/BC1/BC15)</p> </div> <div data-bbox="647 871 1240 903" data-label="Text"> <p>Alcatel One Touch Ultra 960C User Manual, p.11.</p> </div>
<p>a display, supported by the housing, that displays an image at the front surface of the housing</p>	<p>The Accused Instrumentality comprises a display, supported by the housing that displays an image at the front surface of the housing.</p> <p>For example, the following citations show the display screen of the Accused Instrumentality, and that the display is supported by the housing and displays an image at the front surface of the housing.</p>

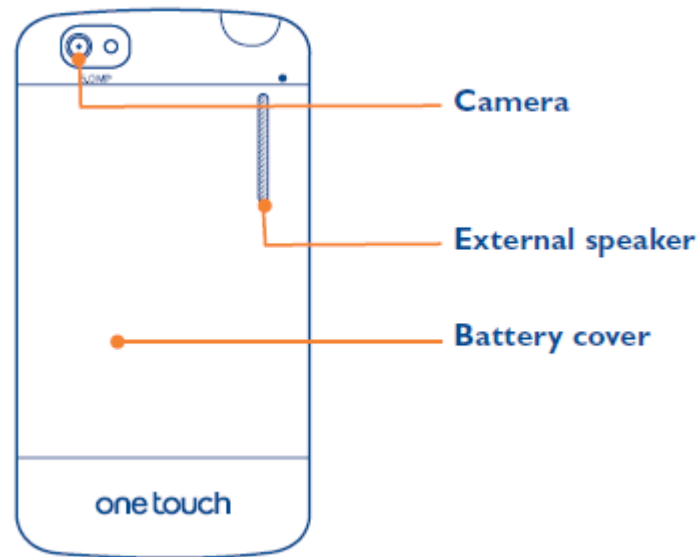
US RE 43,931

TCL Alcatel One Touch Ultra 960C (“Accused Instrumentality”)



<http://www.alcatelonetouch.com/usa/products/smartphones/ot-960c.html>;

**I.1 Keys and connectors**



Alcatel One Touch Ultra 960C User Manual, pp.12-13;



#### Design

Screen: 4.3" WVGA Highly Durable Dragontrail™ Glass, 480 x 800 pixels

Proximity Sensor: Support

Appearance: Touch Bar


Side Key: 3, Volume, Power

<http://www.alcatelonetouch.com/usa/products/smartphones/ot-960c.html>.

US RE 43,931	TCL Alcatel One Touch Ultra 960C (“Accused Instrumentality”)
<p>a contact-sensitive transducer, supported by the housing and having a contact-sensitive surface disposed at said front surface, which produces an output signal in response to moving contact of an object along the contact-sensitive surface of the contact-sensitive transducer</p>	<p>The Accused Instrumentality comprises a contact-sensitive transducer, supported by the housing and having a contact-sensitive surface disposed at said front surface, which produces an output signal in response to moving contact of an object along the contact-sensitive surface of the contact-sensitive transducer.</p> <p>For example, the following citations are excerpts from the Android Tech Info page which show that all devices running Android OS must support a contact-sensitive transducer. The Accused Instrumentality is an Android device which provides support for multiple types of contact-sensitive transducers like touch screen, touch pads etc.</p> <p><b>“Touch Devices</b></p> <p>Android supports a variety of touch screens and touch pads, including stylus-based digitizer tablets. Touch screens are touch devices that are associated with a display such that the user has the impression of directly manipulating items on screen. Touch pads are touch devices that are not associated with a display such as a digitizer tablet. Touch pads are typically used for pointing or for absolute indirect positioning or gesture-based control of a user interface. Touch devices may have buttons whose functions are similar to mouse buttons. Touch devices can sometimes be manipulated using a variety of different tools such as fingers or a stylus depending on the underlying touch sensor technology. Touch devices are sometimes used to implement virtual keys. For example, on some Android devices, the touch screen sensor area extends beyond the edge of the display and serves dual purpose as part of a touch sensitive key pad. Due to the great variety of touch devices, Android relies on a large number of configuration properties to describe the characteristics and desired behavior of each device.”</p> <p><b>Source:</b> <a href="http://source.android.com/tech/input/touch-devices.html">http://source.android.com/tech/input/touch-devices.html</a>  <b>Last Accessed:</b> September 18, 2014</p> <p><b>“Virtual Soft Keys</b></p> <p>The input system provides special features for implementing virtual soft keys. There are three cases:</p> <ol style="list-style-type: none"> <li>1. If the virtual soft keys are displayed graphically on the screen, as on the Galaxy Nexus, then they are implemented by the Navigation Bar component in the System UI package.</li> </ol> <p>Because graphical virtual soft keys are implemented at a high layer in the system, key layout files are not involved and the following information does not apply.</p> <ol style="list-style-type: none"> <li>2. If the virtual soft keys are implemented as an extended touchable region that is part of the main touch screen, as on the Nexus One, then the input system uses a virtual key map file to translate X / Y touch coordinates into Linux key codes, then uses the key layout file to translate Linux key codes into Android key codes.</li> </ol> <p>Refer to the section on <a href="#">Touch Devices</a> for more details about virtual key map files.</p> <p>The key layout file for the touch screen input device must specify the appropriate key mapping and include</p>





US RE 43,931	TCL Alcatel One Touch Ultra 960C (“Accused Instrumentality”)
	<p>ON_POINTER_DOWN and MotionEvent.ACTION_POINTER_UP. Hovering tools are reported to applications as generic motion events using MotionEvent.ACTION_HOVER_ENTER, MotionEvent.ACTION_HOVER_MOVE and MotionEvent.ACTION_HOVER_EXIT.”</p> <p>Source: <a href="http://source.android.com/tech/input/touch-devices.html">http://source.android.com/tech/input/touch-devices.html</a>  Last Accessed: September 18, 2014</p> <p>Further, the following citations show that the Accused Instrumentality supports a contact-sensitive transducer in form of a touch screen which is positioned at the front surface of the Instrumentality.</p> <div data-bbox="685 603 801 718">  </div> <div data-bbox="945 619 1191 651"> <p><b>Mobile Features</b></p> </div> <div data-bbox="945 683 1599 721"> <p>Operation System: Android Gingerbread 2.3.5</p> </div> <div data-bbox="945 750 1568 788"> <p>Network: CDMA Tri-Band (BC0/BC1/BC15)</p> </div> <div data-bbox="945 817 1146 855"> <p>CPU: 1.4 Ghz</p> </div> <div data-bbox="945 884 1209 922"> <p>Wi-Fi: 802.11b/g/n</p> </div> <div data-bbox="945 951 1491 989"> <p>Bluetooth: 3.0 (HSP/HFP/A2DP/OPPI)</p> </div> <p><a href="http://www.alcatelonetouch.com/usa/products/smartphones/ot-960c.html">http://www.alcatelonetouch.com/usa/products/smartphones/ot-960c.html</a>;</p>

US RE 43,931	TCL Alcatel One Touch Ultra 960C (“Accused Instrumentality”)
	<div data-bbox="689 252 795 359" data-label="Image"> </div> <div data-bbox="913 263 1025 303" data-label="Section-Header"> <p><b>Design</b></p> </div> <div data-bbox="913 319 1848 363" data-label="Text"> <p>Screen: 4.3" WVGA Highly Durable Dragontrail™ Glass, 480 x 800 pixels</p> </div> <div data-bbox="913 379 1265 422" data-label="Text"> <p>Proximity Sensor: Support</p> </div> <div data-bbox="913 438 1232 481" data-label="Text"> <p>Appearance: Touch Bar</p> </div> <div data-bbox="913 497 1288 541" data-label="Text"> <p>Side Key: 3, Volume, Power</p> </div> <div data-bbox="638 566 1512 606" data-label="Text"> <p><a href="http://www.alcatelonetouch.com/usa/products/smartphones/ot-960c.html">http://www.alcatelonetouch.com/usa/products/smartphones/ot-960c.html</a>;</p> </div> <div data-bbox="638 630 2083 710" data-label="Text"> <p>The touchscreen in the Accused Instrumentality responds to moving contact of an object along the surface of the contact-sensitive transducer:</p> </div>

### 1.3.1 Using the touchscreen

#### Touch



To access an application, touch it with your finger.

#### Touch and Hold



To enter the available options for an item, touch and hold the item. For example, select a contact in Contacts, touch and hold this contact, options list will then appear on screen.

#### Drag



Place your finger on the screen to drag an object to another location.

#### Slide/Swipe



Slide the screen to scroll up and down the applications, images, web pages... at your convenience. You could slide the screen horizontally too.

#### Flick



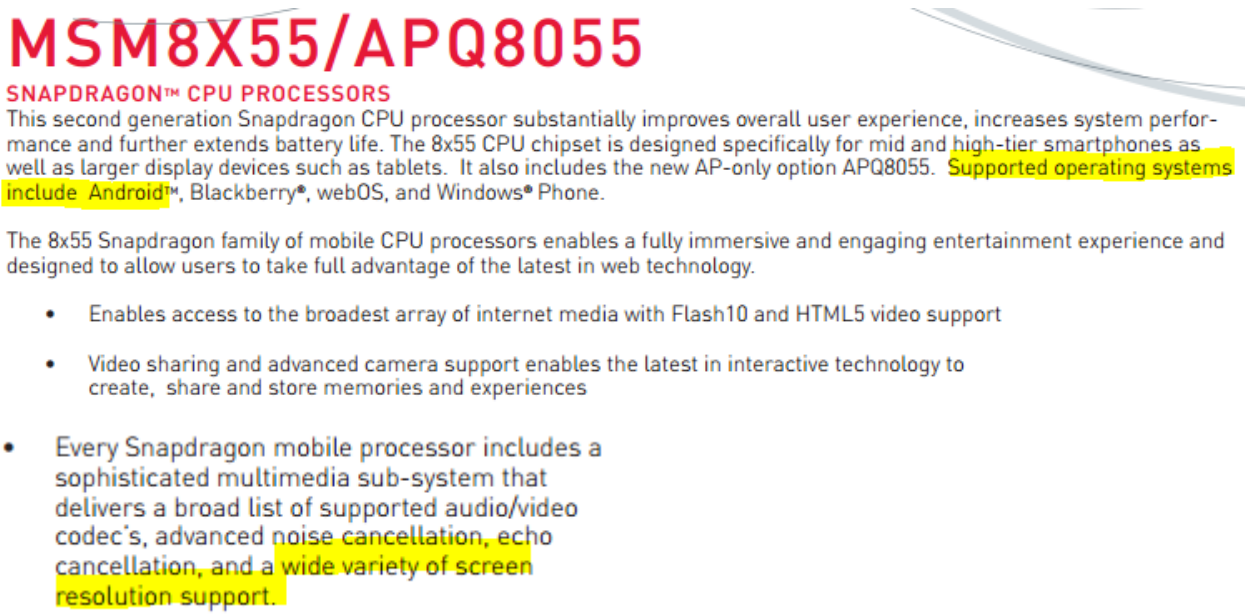
Similar to swiping, but flicking makes it move quicker.

#### Pinch/Spread




Place your fingers of one hand on the screen surface and draw them apart or together to scale an element on the screen.

Alcatel One Touch Ultra 960C User Manual, p.18.


US RE 43,931	TCL Alcatel One Touch Ultra 960C (“Accused Instrumentality”)
<p>and a controller, responsive to the output signal and operatively associated with the display and the radiotelephone communications transceiver, which controls at least one of the display and the radiotelephone communications transceiver and which scrolls displayed rows along an axis of the display based upon the output signal of the contact-sensitive transducer, the controller having a first mode wherein the controller is responsive to contact with the contact-sensitive transducer and a second mode wherein the controller is unresponsive to contact with the contact-sensitive transducer, the second mode being entered in response to an input from a user.</p>	<p>The Accused Instrumentality comprises a controller, responsive to the output signal and operatively associated with the display and the radiotelephone communications transceiver, which controls at least one of the display and the radiotelephone communications transceiver and which scrolls displayed rows along an axis of the display based upon the output signal of the contact-sensitive transducer, the controller having a first mode wherein the controller is responsive to contact with the contact-sensitive transducer and a second mode wherein the controller is unresponsive to contact with the contact-sensitive transducer, the second mode being entered in response to an input from a user.</p> <p>For example, the following citation shows that the Accused Instrumentality comprises a Qualcomm MSM8655 processor which is a controller, responsive to the output signal and operatively associated with the display and the radiotelephone communications transceiver, controls at least one of the display and the radiotelephone communications transceiver. The processor in the Accused Instrumentality runs the Android operating system, and controls both the display and the radiotelephone transceiver by executing Android code. The Accused Instrumentality may also have an additional touchscreen controller chip that communicates between the processor and touchscreen.</p>  <p><b>MSM8X55/APQ8055</b></p> <p><b>SNAPDRAGON™ CPU PROCESSORS</b></p> <p>This second generation Snapdragon CPU processor substantially improves overall user experience, increases system performance and further extends battery life. The 8x55 CPU chipset is designed specifically for mid and high-tier smartphones as well as larger display devices such as tablets. It also includes the new AP-only option APQ8055. Supported operating systems include Android™, Blackberry®, webOS, and Windows® Phone.</p> <p>The 8x55 Snapdragon family of mobile CPU processors enables a fully immersive and engaging entertainment experience and designed to allow users to take full advantage of the latest in web technology.</p> <ul style="list-style-type: none"> <li>• Enables access to the broadest array of internet media with Flash10 and HTML5 video support</li> <li>• Video sharing and advanced camera support enables the latest in interactive technology to create, share and store memories and experiences</li> <li>• Every Snapdragon mobile processor includes a sophisticated multimedia sub-system that delivers a broad list of supported audio/video codec's, advanced noise cancellation, echo cancellation, and a wide variety of screen resolution support.</li> </ul>

US RE 43,931	TCL Alcatel One Touch Ultra 960C (“Accused Instrumentality”)																			
	<table><tr><th>Features</th><th>MSM8x55 and APQ8055 (AP only)</th></tr><tr><td>Process Technology</td><td>45nm</td></tr><tr><td>Package</td><td>904NSP PoP, 14x14mm(0.4mm) Dual-channel LPDDR2</td></tr><tr><td>CPU Processor</td><td>Scorpion – up to 1.4GHz</td></tr><tr><td>Modem</td><td>MSM8255 – UMTS / Single Mode MSM8655 – CDMA / Multimode APQ8055 – No WWAN Modem</td></tr><tr><td>Peak Data Rates UL/DL</td><td>HSPA+: DL 14.4 Mbps / UL 5.76 Mbps DO: DL 14.7 Mbps / UL 5.4 Mbps 1x: DL / UL 307.2 kbps</td></tr><tr><td>Frequency Support</td><td>700 MHz, 800MHz(BCO/BC10 &amp; JCDMA), 1700MHz(KPCS), 1900MHz(PCS+Block G), 1700MHz/2100MHz (AWS), 2100MHz (IMT), Quad-GSM (850, 900, 1800, 1900), UMTS (900, 2100)</td></tr><tr><td>Memory</td><td>2x 333MHz LPDDR2</td></tr><tr><td>LCD Support</td><td>24-bit XGA (1024x768)</td></tr></table>	Features	MSM8x55 and APQ8055 (AP only)	Process Technology	45nm	Package	904NSP PoP, 14x14mm(0.4mm) Dual-channel LPDDR2	CPU Processor	Scorpion – up to 1.4GHz	Modem	MSM8255 – UMTS / Single Mode MSM8655 – CDMA / Multimode APQ8055 – No WWAN Modem	Peak Data Rates UL/DL	HSPA+: DL 14.4 Mbps / UL 5.76 Mbps DO: DL 14.7 Mbps / UL 5.4 Mbps 1x: DL / UL 307.2 kbps	Frequency Support	700 MHz, 800MHz(BCO/BC10 & JCDMA), 1700MHz(KPCS), 1900MHz(PCS+Block G), 1700MHz/2100MHz (AWS), 2100MHz (IMT), Quad-GSM (850, 900, 1800, 1900), UMTS (900, 2100)	Memory	2x 333MHz LPDDR2	LCD Support	24-bit XGA (1024x768)	
Features	MSM8x55 and APQ8055 (AP only)																			
Process Technology	45nm																			
Package	904NSP PoP, 14x14mm(0.4mm) Dual-channel LPDDR2																			
CPU Processor	Scorpion – up to 1.4GHz																			
Modem	MSM8255 – UMTS / Single Mode MSM8655 – CDMA / Multimode APQ8055 – No WWAN Modem																			
Peak Data Rates UL/DL	HSPA+: DL 14.4 Mbps / UL 5.76 Mbps DO: DL 14.7 Mbps / UL 5.4 Mbps 1x: DL / UL 307.2 kbps																			
Frequency Support	700 MHz, 800MHz(BCO/BC10 & JCDMA), 1700MHz(KPCS), 1900MHz(PCS+Block G), 1700MHz/2100MHz (AWS), 2100MHz (IMT), Quad-GSM (850, 900, 1800, 1900), UMTS (900, 2100)																			
Memory	2x 333MHz LPDDR2																			
LCD Support	24-bit XGA (1024x768)																			
<a href="https://www.qualcomm.com/media/documents/files/snapdragon-msm8x55-apq8055-product-brief.pdf">https://www.qualcomm.com/media/documents/files/snapdragon-msm8x55-apq8055-product-brief.pdf</a> ;																				

US RE 43,931	TCL Alcatel One Touch Ultra 960C (“Accused Instrumentality”)
	<div data-bbox="689 253 795 359" data-label="Image"> </div> <div data-bbox="920 268 1021 300" data-label="Section-Header"> <p><b>Design</b></p> </div> <div data-bbox="920 325 1845 359" data-label="Text"> <p>Screen: 4.3" WVGA Highly Durable Dragontrail™ Glass, 480 x 800 pixels</p> </div> <div data-bbox="920 384 1256 418" data-label="Text"> <p>Proximity Sensor: Support</p> </div> <div data-bbox="920 443 1227 477" data-label="Text"> <p>Appearance: Touch Bar</p> </div> <div data-bbox="920 502 1279 536" data-label="Text"> <p>Side Key: 3, Volume, Power</p> </div> <div data-bbox="645 571 1509 603" data-label="Text"> <p><a href="http://www.alcatelonetouch.com/usa/products/smartphones/ot-960c.html">http://www.alcatelonetouch.com/usa/products/smartphones/ot-960c.html</a>;</p> </div> <div data-bbox="645 638 2083 703" data-label="Text"> <p>The Accused Instrumentality scrolls displayed rows along an axis of the display based upon the output signal of the contact-sensitive transducer, as shown in the following citations:</p> </div> <div data-bbox="656 777 1070 810" data-label="Section-Header"> <p><b>1.3.1 Using the touchscreen</b></p> </div> <div data-bbox="672 888 844 922" data-label="Section-Header"> <p><b>Slide/Swipe</b></p> </div> <div data-bbox="862 831 936 951" data-label="Image"> </div> <div data-bbox="669 949 1599 1021" data-label="Text"> <p>Slide the screen to scroll up and down the applications, images, web pages... at your convenience. You could slide the screen horizontally too.</p> </div> <div data-bbox="645 1040 1245 1074" data-label="Text"> <p>Alcatel One Touch Ultra 960C User Manual, p.18;</p> </div> <div data-bbox="645 1109 2083 1209" data-label="Text"> <p>The following citation is an excerpt from the Android Tech Info page which shows that all devices running Android OS employ methods to record coordinates of the X and Y axis of the touch screen and perform functions like scroll, display graphics etc.</p> </div> <div data-bbox="739 1243 2083 1396" data-label="Text"> <p>“The minimum and maximum values of the ABS_X, ABS_Y, ABS_MT_POSITION_X and ABS_MT_POSITION_Y axes define the bounds of the active area of the device in device-specific surface units. In the case of a touch screen, the active area describes the part of the touch device that actually covers the display. For a touch screen, the system automatically interpolates the reported touch positions in surface units to obtain touch positions in display pixels according to the following calculation:</p> </div>

US RE 43,931	TCL Alcatel One Touch Ultra 960C (“Accused Instrumentality”)
	<p> <math display="block">\text{displayX} = (x - \text{minX}) * \text{displayWidth} / (\text{maxX} - \text{minX} + 1)</math> <math display="block">\text{displayY} = (y - \text{minY}) * \text{displayHeight} / (\text{maxY} - \text{minY} + 1)</math> </p> <p>A touch screen may report touches outside of the reported active area.</p> <p>Touches that are initiated outside the active area are not delivered to applications but may be used for virtual keys.</p> <p>Touches that are initiated inside the active area, or that enter and exit the display area are delivered to applications. Consequently, if a touch starts within the bounds of an application and then moves outside of the active area, the application may receive touch events with display coordinates that are negative or beyond the bounds of the display. This is expected behavior.</p> <p>A touch device should never clamp touch coordinates to the bounds of the active area. If a touch exits the active area, it should be reported as being outside of the active area, or it should not be reported at all.</p> <p>For example, if the user's finger is touching near the top-left corner of the touch screen, it may report a coordinate of (minX, minY). If the finger continues to move further outside of the active area, the touch screen should either start reporting coordinates with components less than minX and minY, such as (minX - 2, minY - 3), or it should stop reporting the touch altogether. In other words, the touch screen should <i>not</i> be reporting (minX, minY) when the user's finger is really touching outside of the active area.</p> <p>Clamping touch coordinates to the display edge creates an artificial hard boundary around the edge of the screen which prevents the system from smoothly tracking motions that enter or exit the bounds of the display area.”</p> <p><b>Source:</b> <a href="http://source.android.com/tech/input/touch-devices.html">http://source.android.com/tech/input/touch-devices.html</a>  <b>Last Accessed:</b> September 18, 2014</p> <p>The Accused Instrumentality has a first mode wherein the controller is responsive to contact with the contact-sensitive transducer and a second mode wherein the controller is unresponsive to contact with the contact-sensitive transducer, the second mode being entered in response to an input from a user. For example, when the user inputs into the Accused Instrumentality via a proximity sensor that the user is making a phone call by placing the phone to the user’s ear, the Accused Instrumentality makes the controller unresponsive to contact with the contact-sensitive transducer, as shown in the below citations:</p> <div data-bbox="685 1174 752 1235">  </div> <p>To avoid misoperation on touchscreen during a call, screen will be locked automatically when the user put the mobile phone close to his/her ear, and it will be unlocked when put the mobile phone away.</p> <p>Alcatel One Touch Ultra 960C User Manual, p.32;</p>



US RE 43,931	TCL Alcatel One Touch Ultra 960C (“Accused Instrumentality”)
	<div data-bbox="689 288 795 392">  </div> <div data-bbox="920 301 1021 335"> <p><b>Design</b></p> </div> <div data-bbox="920 360 1845 394"> <p>Screen: 4.3" WVGA Highly Durable Dragontrail™ Glass, 480 x 800 pixels</p> </div> <div data-bbox="920 419 1256 453"> <p>Proximity Sensor: Support</p> </div> <div data-bbox="920 478 1227 512"> <p>Appearance: Touch Bar</p> </div> <div data-bbox="920 537 1279 571"> <p>Side Key: 3, Volume, Power</p> </div> <p data-bbox="645 608 1509 638"><a href="http://www.alcatelonetouch.com/usa/products/smartphones/ot-960c.html">http://www.alcatelonetouch.com/usa/products/smartphones/ot-960c.html</a>;</p> <p data-bbox="645 675 2083 737">As another example, when the user presses the “Power” button, the screen locks, making the controller unresponsive to contact with the contact-sensitive transducer, as shown below:</p> <p data-bbox="672 790 954 823"><b>Power key ends call</b></p> <p data-bbox="672 849 1563 882"><b>Mark the check box to end a call by pressing Power key during the call.</b></p> <p data-bbox="645 911 1256 944">Alcatel One Touch Ultra 960C User Manual, p.121.</p>
<p>2. A radiotelephone according to claim 1, wherein the contact-sensitive surface, when the housing is held within the user's hand such that the rear surface confronts the user's palm, confronts a finger or a thumb of the holding hand.</p>	<p>The Accused Instrumentality is a radiotelephone wherein the contact-sensitive surface, when the housing is held within the user's hand such that the rear surface confronts the user's palm, confronts a finger or a thumb of the holding hand.</p> <p>For example, the contact-sensitive surface of the Accused Instrumentality, when the housing is held within the user's hand such that the rear surface confronts the user's palm, confronts a finger or a thumb of the holding hand, as shown below:</p>



<http://hotnewslatest.com/?p=121>.

The following citation is an excerpt from the Android Tech Info page which shows that all devices running Android OS support a touch screen and supports finger as a tool for user input

**“Tools and Tool Types**

A *tool* is a finger, stylus or other apparatus that is used to interact with the touch device. Some touch devices can distinguish between different types of tools.

Elsewhere in Android, as in the MotionEvent API, a *tool* is often referred to as a *pointer*.

The following tool types are supported:

- BTN\_TOOL\_FINGER and MT\_TOOL\_FINGER: mapped to MotionEvent.TOOL\_TYPE\_FINGER.”

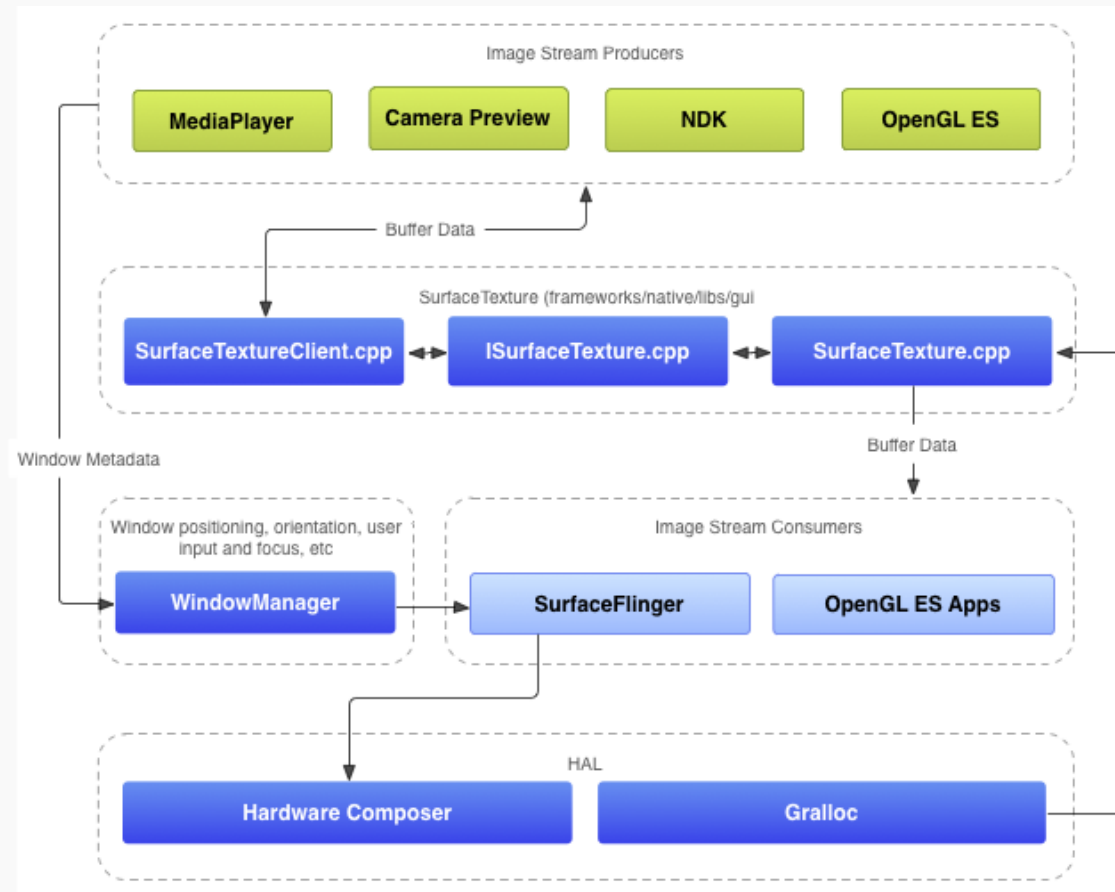
Source: <http://source.android.com/tech/input/touch-devices.html>

Last Accessed: September 18, 2014

US RE 43,931	TCL Alcatel One Touch Ultra 960C (“Accused Instrumentality”)
<p>3. A radiotelephone according to claim 1, wherein the controller is operative to selectively display an image on the display according to the output signal of the contact-sensitive transducer.</p>	<p>The Accused Instrumentality comprises a controller that is operative to selectively display an image on the display according to the output signal of the contact-sensitive transducer.</p> <p>The following citations are excerpts from the Android Tech Info page which shows that all devices running Android OS selectively display images on the display according to the output signal of the contact-sensitive transducer.</p> <p>“The minimum and maximum values of the ABS_X, ABS_Y, ABS_MT_POSITION_X and ABS_MT_POSITION_Y axes define the bounds of the active area of the device in device-specific surface units. In the case of a touch screen, the active area describes the part of the touch device that actually covers the display.</p> <p>For a touch screen, the system automatically interpolates the reported touch positions in surface units to obtain touch positions in display pixels according to the following calculation:</p> $\text{displayX} = (x - \text{minX}) * \text{displayWidth} / (\text{maxX} - \text{minX} + 1)$ $\text{displayY} = (y - \text{minY}) * \text{displayHeight} / (\text{maxY} - \text{minY} + 1)$ <p>A touch screen may report touches outside of the reported active area.</p> <p>Touches that are initiated outside the active area are not delivered to applications but may be used for virtual keys.</p> <p>Touches that are initiated inside the active area, or that enter and exit the display area are delivered to applications. Consequently, if a touch starts within the bounds of an application and then moves outside of the active area, the application may receive touch events with display coordinates that are negative or beyond the bounds of the display. This is expected behavior.</p> <p>A touch device should never clamp touch coordinates to the bounds of the active area. If a touch exits the active area, it should be reported as being outside of the active area, or it should not be reported at all.</p> <p>For example, if the user's finger is touching near the top-left corner of the touch screen, it may report a coordinate of (minX, minY). If the finger continues to move further outside of the active area, the touch screen should either start reporting coordinates with components less than minX and minY, such as (minX - 2, minY - 3), or it should stop reporting the touch altogether. In other words, the touch screen should <i>not</i> be reporting (minX, minY) when the user's finger is really touching outside of the active area.</p> <p>Clamping touch coordinates to the display edge creates an artificial hard boundary around the edge of the screen which prevents the system from smoothly tracking motions that enter or exit the bounds of the display area.”</p> <p><b>Source:</b> <a href="http://source.android.com/tech/input/touch-devices.html">http://source.android.com/tech/input/touch-devices.html</a>  <b>Last Accessed:</b> September 18, 2014</p>

**Window Manager**

The Android system service that controls window lifecycles, input and focus events, screen orientation, transitions, animations, position, transforms, z-order, and many other aspects of a window (a container for views). A window is always backed by a surface. The Window Manager sends all of the window metadata to SurfaceFlinger, so SurfaceFlinger can use that data to figure out how to composite surfaces on the display.



**Figure 1.** How surfaces are rendered

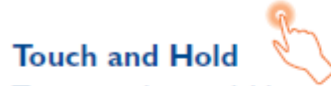
US RE 43,931	TCL Alcatel One Touch Ultra 960C (“Accused Instrumentality”)
	<p><b>Source:</b> <a href="http://source.android.com/devices/graphics.html">http://source.android.com/devices/graphics.html</a>  <b>Last Accessed:</b> September 18, 2014</p> <p>For example, the Accused Instrumentality selectively displays an image on the display according to the output signal of the contact-sensitive transducer, as shown below:</p>

### 1.3.1 Using the touchscreen



#### Touch

To access an application, touch it with your finger.



#### Touch and Hold

To enter the available options for an item, touch and hold the item. For example, select a contact in Contacts, touch and hold this contact, options list will then appear on screen.



#### Drag

Place your finger on the screen to drag an object to another location.



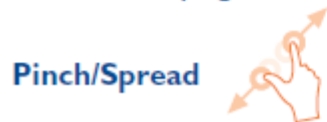
#### Slide/Swipe

Slide the screen to scroll up and down the applications, images, web pages... at your convenience. You could slide the screen horizontally too.



#### Flick


Similar to swiping, but flicking makes it move quicker.



#### Pinch/Spread

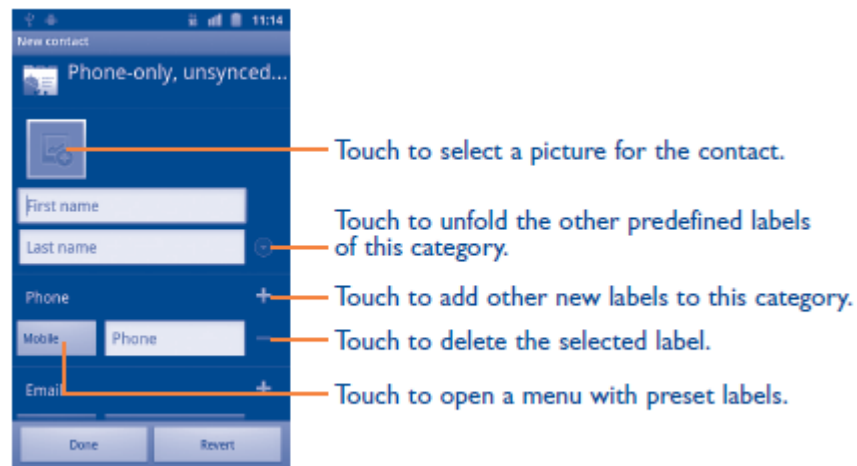
Place your fingers of one hand on the screen surface and draw them apart or together to scale an element on the screen.

Alcatel One Touch Ultra 960C User Manual, p.18.

US RE 43,931	TCL Alcatel One Touch Ultra 960C (“Accused Instrumentality”)
<p>4. A radiotelephone according to claim 3, wherein the controller is operative to selectively display a graphical object on the display according to the output signal of the contact-sensitive transducer.</p>	<p>The Accused Instrumentality comprises a controller which is operative to selectively display a graphical object on the display according to the output signal of the contact-sensitive transducer.</p> <p>An image is a graphical object and the Accused instrumentality with the Android OS employs methods to display images on the screen upon user input.</p> <p>For evidence refer to Claim 3.</p>
<p>5. A radiotelephone according to claim 4, wherein the controller is operative to selectively display a row on the display according to the output signal of the contact-sensitive transducer.</p>	<p>The Accused Instrumentality comprises a controller which is operative to selectively display a row on the display according to the output signal of the contact-sensitive transducer.</p> <p>For example, the Accused Instrumentality includes a controller operative to selectively display a row on the display according to the output signal of the contact-sensitive transducer when a user uses the touchscreen to scroll through rows of information on the screen, as shown below:</p> <p><b>1.3.1 Using the touchscreen</b></p>  <p><b>Slide/Swipe</b></p> <p>Slide the screen to <b>scroll</b> up and down the applications, images, web pages... at your convenience. You could slide the screen horizontally too.</p> <p>Alcatel One Touch Ultra 960C User Manual, p.18;</p> <p><b>Notification panel</b></p> <p>When you receive a new notification, an icon will be displayed in your Status bar at the top of your screen. Tap and hold Status bar, and then slide your finger downward to open the Notifications panel. If you have multiple notifications, you may need to <b>scroll</b> to see them all. Tap a notification to respond to it.</p> <p>Alcatel One Touch Ultra 960C User Manual, p.21;</p>



US RE 43,931	TCL Alcatel One Touch Ultra 960C (“Accused Instrumentality”)
	<p><b>Wallpaper customization</b></p> <p>Touch and hold an empty area or press <b>Menu</b> key and touch <b>Wallpaper</b> on the Home screen, a popup window named <b>Select wallpaper from</b> will appear, offering a range of options. <b>Gallery/Graphics</b> include pictures and Images you have taken, cropped or downloaded. <b>Live wallpapers</b> include a <b>scrolling</b> list of animated wallpapers. <b>Wallpaper</b> includes all preset wallpapers in the phone. Slide left and right to locate a desired image, touch <b>Set wallpaper</b> to confirm.</p> <p>Alcatel One Touch Ultra 960C User Manual, p.25;</p> <p><b>3.3.2 Adding a contact</b></p> <p>Press <b>Menu</b> key from contacts list screen and touch <b>New contact</b>.</p> <p>You are required to enter the contact's name and other contact information. By <b>scrolling up and down the screen</b>, you can move from one field to another easily.</p>





Alcatel One Touch Ultra 960C User Manual, pp.35-36;

### To zoom in/out of a web page

Zoom controls   will be activated when scrolling the screen using your finger. Touch the plus or minus on the side of the Zoom control to zoom in or out.

To quickly zoom into a section of a web page, double-tap on the section you want to view. To return to normal zoom level, double-tap again.

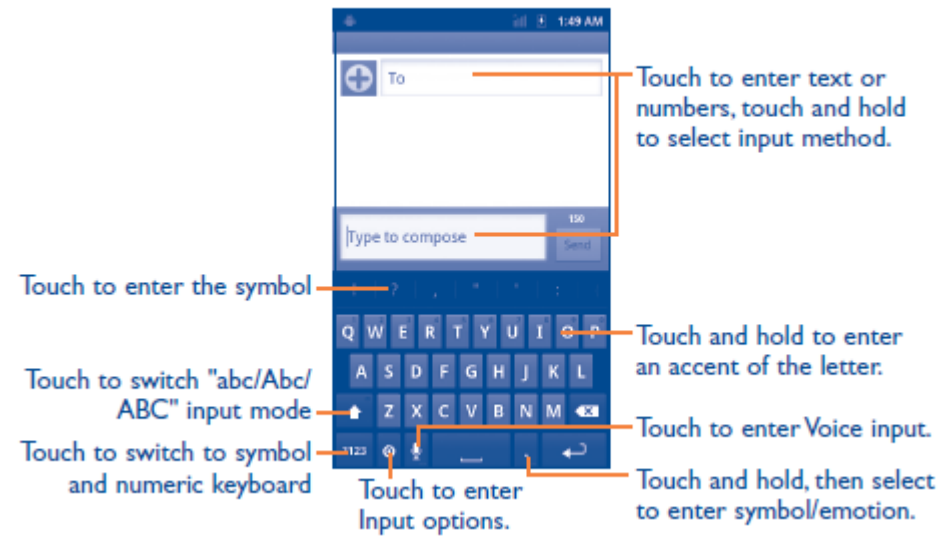
Alcatel One Touch Ultra 960C User Manual, p.65;

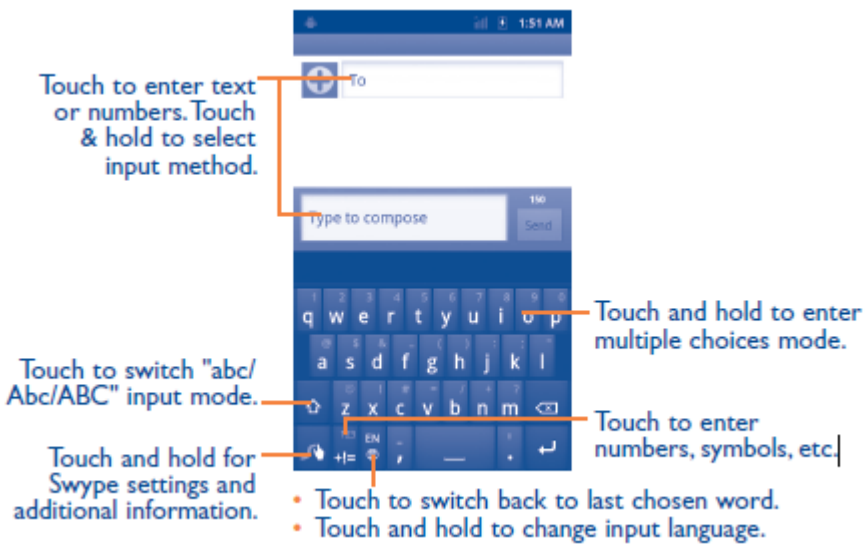
### Flag

You can report an inappropriate application to Google Play Store by flagging it. Open the details screen for the application, scroll to the bottom and touch Flag as inappropriate, enter the reason and finally touch Submit.

US RE 43,931	TCL Alcatel One Touch Ultra 960C (“Accused Instrumentality”)
	<p>Alcatel One Touch Ultra 960C User Manual, p.80;</p> <p><b>Zoom in/zoom out</b></p> <p>Touch <b>1x</b> icon to open the Zoom control and slide the scroll bar to zoom in or out gradually. Touch the screen twice to zoom all the way in or out.</p> <p>Alcatel One Touch Ultra 960C User Manual, p.82;</p> <ul style="list-style-type: none"> <li>• <b>Zoom</b> Touch to open the Zoom control and slide the scroll bar to zoom in or out gradually.</li> </ul> <p><b>Video/Camcorder settings:</b></p> <ul style="list-style-type: none"> <li>• <b>Settings</b> Touch to enter a scrolling list of settings: Continuous AF, Video quality, Color effect, Video size, Remaining time, etc.</li> </ul> <p>Alcatel One Touch Ultra 960C User Manual, p.83.</p>
<p>6. A radiotelephone according to claim 4, wherein the controller is operative to display a plurality of graphical objects on the display and to identify one of the displayed plurality of graphical objects responsive to the output signal of the contact-sensitive transducer.</p>	<p>The Accused Instrumentality comprises a controller which is operative to display a plurality of graphical objects on the display and to identify one of the displayed plurality of graphical objects responsive to the output signal of the contact-sensitive transducer.</p> <p>For example, the controller in the Accused Instrumentality is operative to display a plurality of graphical objects on the display and to identify one of the displayed plurality of graphical objects responsive to the output signal of the contact-sensitive transducer, such as choosing icons, fields, soft keys, or other graphical objects on the field through touch, as shown below:</p>

### 2.1.1 Standard Android keyboard



US RE 43,931	TCL Alcatel One Touch Ultra 960C (“Accused Instrumentality”)
	<p data-bbox="689 247 1059 284"><b>2.1.2 Swype keyboard</b></p>  <p data-bbox="712 375 929 486">Touch to enter text or numbers. Touch &amp; hold to select input method.</p> <p data-bbox="678 662 929 710">Touch to switch "abc/Abc/ABC" input mode.</p> <p data-bbox="683 750 929 829">Touch and hold for Swype settings and additional information.</p> <p data-bbox="1265 598 1534 662">Touch and hold to enter multiple choices mode.</p> <p data-bbox="1265 710 1512 774">Touch to enter numbers, symbols, etc.</p> <ul data-bbox="963 790 1444 853" style="list-style-type: none"> <li>• Touch to switch back to last chosen word.</li> <li>• Touch and hold to change input language.</li> </ul> <p data-bbox="649 877 1294 909">Alcatel One Touch Ultra 960C User Manual, pp.27-28;</p>

### 1.3 Home screen

You can bring all the items (applications, shortcuts, folders and widgets) you love or use most frequently to your Home screens for quick access. Press **Home** key to switch to the Home screens.



#### Status bar

- Status/Notification indicators
- Touch and Drag down to open the notification panel.

#### Application tab

- Touch to open main menu.
- Touch and hold to display thumbnails.

Touch an icon to open an application, folder, etc.

#### Touch to access Browser

- Touch to access the dial screen.
- Touch to access Call log if you have missed call(s).

Alcatel One Touch Ultra 960C User Manual, p.17;

#### 1.3.1 Using the touchscreen


##### Touch




To access an application, touch it with your finger.

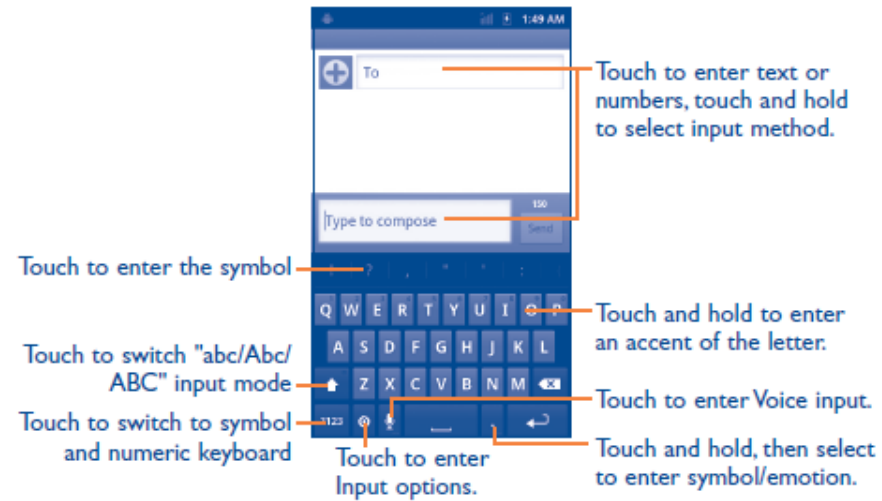
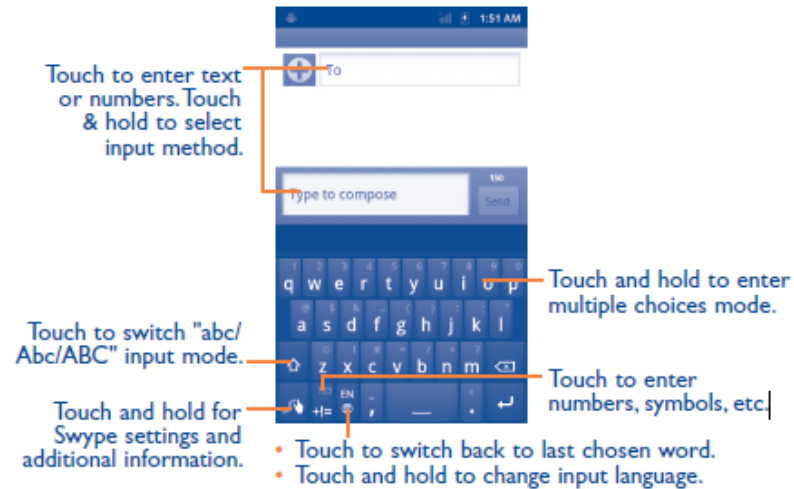
Alcatel One Touch Ultra 960C User Manual, p.18.

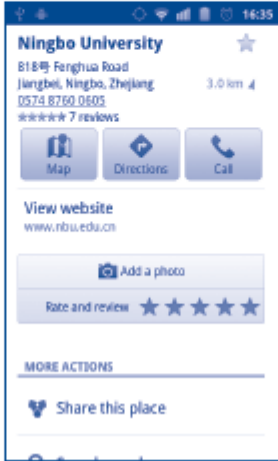
US RE 43,931	TCL Alcatel One Touch Ultra 960C (“Accused Instrumentality”)
<p>7. A radiotelephone according to claim 4, wherein the controller is operative to determine a position of contact of an object along an axis of the contact-sensitive transducer responsive to the output signal of the contact-sensitive transducer and to selectively display a graphical object based on the determined position of contact to thereby identify the graphical object.</p>	<p>The Accused Instrumentality comprises a controller which is operative to determine a position of contact of an object along an axis of the contact-sensitive transducer responsive to the output signal of the contact-sensitive transducer and to selectively display a graphical object based on the determined position of contact to thereby identify the graphical object.</p> <p>The Accused Instrumentality operates on an Android OS which employs methods to determine the position of the contact along the axis of the display screen and selectively displays a graphical object based on a user input.</p> <p>For evidence refer to Claims 1, 3 and 6.</p>
<p>8. A radiotelephone according to claim 7, wherein the controller is operative to highlight one of a plurality of displayed graphical objects responsive to the output signal of the contact-sensitive transducer.</p>	<p>The Accused Instrumentality comprises a controller which is operative to highlight one of a plurality of displayed graphical objects responsive to the output signal of the contact-sensitive transducer.</p> <p>For example, the controller in the Accused Instrumentality is operative to highlight one of a plurality of displayed graphical objects responsive to the output signal of the contact-sensitive transducer, as shown below:</p>

US RE 43,931	TCL Alcatel One Touch Ultra 960C (“Accused Instrumentality”)
	<p data-bbox="692 248 1075 284"><b>To find text on a web page</b></p> <ul data-bbox="692 300 1615 598" style="list-style-type: none"> <li data-bbox="692 300 1615 331">• Press <b>Menu</b> key from web page screen, then touch <b>More\Find on page</b>.</li> <li data-bbox="692 347 1243 379">• Enter the text or phrase you want to find.</li> <li data-bbox="692 395 1615 467">• The first word with matching characters will be highlighted on the screen, and subsequent matches will be boxed.</li> <li data-bbox="692 483 1615 555">• Touch the left or right arrow to switch to the previous or next matching items.</li> <li data-bbox="692 563 1429 598">• When finished, you can touch  to close the search bar.</li> </ul> <p data-bbox="692 635 1086 670"><b>To copy text on a web page</b></p> <p data-bbox="692 694 1615 762">You can copy text from a web page and paste it into emails or SMS/MMS messages.</p> <ul data-bbox="692 778 1615 994" style="list-style-type: none"> <li data-bbox="692 778 1615 810">• Press <b>Menu</b> key from web page screen, then touch <b>More\Select text</b>.</li> <li data-bbox="692 826 1615 898">• Place your finger at the start of the text you want to copy and then drag it to the end of the text.</li> <li data-bbox="692 914 1301 946">• Selected text is copied and highlighted in color.</li> <li data-bbox="692 962 958 994">• Release your finger.</li> </ul> <p data-bbox="692 1018 1615 1086">To paste the copied text into an email or SMS/MMS message, touch and hold the enter box and then touch <b>Paste</b> on the options menu.</p> <p data-bbox="647 1145 1243 1177">Alcatel One Touch Ultra 960C User Manual, p.65;</p>


US RE 43,931	TCL Alcatel One Touch Ultra 960C (“Accused Instrumentality”)
	<p>In the search box, enter an address, a city or a local business.</p> <p>Touch the search icon and in a while your search results will appear on the map highlighted by markers with letter labels.</p>  <p>Alcatel One Touch Ultra 960C User Manual, p.94.</p> <p>For additional evidence refer to Claims 1, 3 and 6.</p>
<p>9. A radiotelephone according to claim 7, wherein the controller is operative to display a cursor that indicates one of a plurality of displayed graphical objects responsive to the output signal of the contact-sensitive transducer.</p>	<p>The Accused Instrumentality comprises a controller which is operative to display a cursor that indicates one of a plurality of displayed graphical objects responsive to the output signal of the contact-sensitive transducer.</p> <p>For example, the controller in the Accused Instrumentality is operative to display a cursor that indicates one of a plurality of displayed graphical objects responsive to the output signal of the contact-sensitive transducer, as shown below:</p>



**2.1.1 Standard Android keyboard****2.1.2 Swype keyboard**

US RE 43,931	TCL Alcatel One Touch Ultra 960C (“Accused Instrumentality”)
	<p>Alcatel One Touch Ultra 960C User Manual, pp.27-28;</p> <p><b>9.3.1 How to star (or unstar) a location</b></p> <ul style="list-style-type: none"> <li>• Touch &amp; hold a location on a map.</li> <li>• Touch the address rectangle that opens.</li> <li>• Touch the gray star at the top of the screen to star the location. (Or touch a gold star to unstar that location.)</li> </ul>  <p>Alcatel One Touch Ultra 960C User Manual, p.95.</p>
<p>10. A radiotelephone according to claim 7, wherein the controller is operative to cause at least one of the display or the radiotelephone communications transceiver to perform a plurality of actions, wherein an action of the plurality of actions is associated with the identified graphical object and</p>	<p>The Accused Instrumentality comprises a controller which is operative to cause at least one of the display or the radiotelephone communications transceiver to perform a plurality of actions, wherein an action of the plurality of actions is associated with the identified graphical object and wherein the controller is further operative, responsive to the contact-sensitive transducer, to initiate the action associated with the identified graphical object.</p> <p>For evidence refer to Claims 1, 3 and 6.</p>

US RE 43,931	TCL Alcatel One Touch Ultra 960C (“Accused Instrumentality”)
<p>wherein the controller is further operative, responsive to the contact-sensitive transducer, to initiate the action associated with the identified graphical object.</p>	
<p>11. A radiotelephone according to claim 10, wherein the controller is operative, responsive to the contact-sensitive transducer to detect a momentary contact with the contact-sensitive transducer and to initiate the action associated with the identified graphical object responsive to detection of the momentary contact.</p>	<p>The Accused Instrumentality comprises a controller which is operative, responsive to the contact-sensitive transducer to detect a momentary contact with the contact-sensitive transducer and to initiate the action associated with the identified graphical object responsive to detection of the momentary contact.</p> <p>For evidence refer to Claims 1, 3 and 6.</p>
<p>12. A radiotelephone according to claim 11, wherein the controller is operative to initiate the action in response to detection of a plurality of momentary contacts occurring within a predetermined time interval.</p>	<p>The Accused Instrumentality comprises a controller which is operative to initiate the action in response to detection of a plurality of momentary contacts occurring within a predetermined time interval.</p> <p>The controller in the Accused Instrumentality is operative to initiate the action in response to detection of a plurality of momentary contacts occurring within a predetermined time interval, such as “double-tap,” “triple-tap,” or “quad-tap,” as shown below:</p>

US RE 43,931	TCL Alcatel One Touch Ultra 960C (“Accused Instrumentality”)
	<p><b>Tools and Tool Types</b></p> <hr/> <p>A <i>tool</i> is a finger, stylus or other apparatus that is used to interact with the touch device. Some touch devices can distinguish between different types of tools.</p> <p>Elsewhere in Android, as in the <code>MotionEvent</code> API, a <i>tool</i> is often referred to as a <i>pointer</i>.</p> <p>The following tool types are supported:</p> <ul style="list-style-type: none"> <li>• <code>BTN_TOOL_FINGER</code> and <code>MT_TOOL_FINGER</code>: mapped to <code>MotionEvent.TOOL_TYPE_FINGER</code>.</li> <li>• <code>BTN_TOOL_PEN</code> and <code>MT_TOOL_PEN</code>: mapped to <code>MotionEvent.TOOL_TYPE_STYLUS</code>.</li> <li>• <code>BTN_TOOL_RUBBER</code>: mapped to <code>MotionEvent.TOOL_TYPE_ERASER</code>.</li> <li>• <code>BTN_TOOL_BRUSH</code>: mapped to <code>MotionEvent.TOOL_TYPE_STYLUS</code>.</li> <li>• <code>BTN_TOOL_PENCIL</code>: mapped to <code>MotionEvent.TOOL_TYPE_STYLUS</code>.</li> <li>• <code>BTN_TOOL_AIRBRUSH</code>: mapped to <code>MotionEvent.TOOL_TYPE_STYLUS</code>.</li> <li>• <code>BTN_TOOL_MOUSE</code>: mapped to <code>MotionEvent.TOOL_TYPE_MOUSE</code>.</li> <li>• <code>BTN_TOOL_LENS</code>: mapped to <code>MotionEvent.TOOL_TYPE_MOUSE</code>.</li> <li>• <code>BTN_TOOL_DOUBLETAP</code>, <code>BTN_TOOL_TRIPLETAP</code>, and <code>BTN_TOOL_QUADTAP</code>: mapped to <code>MotionEvent.TOOL_TYPE_FINGER</code>.</li> </ul> <p><a href="http://source.android.com/devices/tech/input/touch-devices.html">http://source.android.com/devices/tech/input/touch-devices.html</a></p> <p><b>To zoom in/out of a web page</b></p> <p>Zoom controls  will be activated when scrolling the screen using your finger. Touch the plus or minus on the side of the Zoom control to zoom in or out.</p> <p>To quickly zoom into a section of a web page, double-tap on the section you want to view. To return to normal zoom level, double-tap again.</p> <p>Alcatel One Touch Ultra 960C User Manual, p.65;</p>

US RE 43,931	TCL Alcatel One Touch Ultra 960C (“Accused Instrumentality”)
	<p><b>Zoom in/zoom out</b></p> <p>Touch <b>1x</b> icon to open the Zoom control and slide the scroll bar to zoom in or out gradually. <b>Touch the screen twice</b> to zoom all the way in or out.</p> <p>Alcatel One Touch Ultra 960C User Manual, p.82;</p> <p>To zoom in and out of a map, touch the plus or minus side of the zoom control <b>+</b> <b>-</b>, or you can also zoom in/out by <b>double-tapping</b> a location on screen.</p> <p>Alcatel One Touch Ultra 960C User Manual, p.94.</p>
<p>15. A radiotelephone according to claim 1, wherein the contact-sensitive transducer comprises one of a resistive transducer, a capacitive transducer and a semiconductive transducer.</p>	<p>The Accused Instrumentality employs a contact-sensitive surface (touch screen) supported by a contact-sensitive transducer which comprises one of a resistive transducer, a capacitive transducer and a semiconductive transducer.</p> <p>For example, the contact-sensitive transducer in the Accused Instrumentality is a capacitive transducer, as shown below:</p> <div data-bbox="689 831 795 936" data-label="Image"> </div> <div data-bbox="920 847 1021 879" data-label="Section-Header"> <p><b>Design</b></p> </div> <div data-bbox="920 906 1843 938" data-label="Text"> <p>Screen: 4.3" WVGA Highly Durable Dragontrail™ Glass, 480 x 800 pixels</p> </div> <div data-bbox="920 965 1256 997" data-label="Text"> <p>Proximity Sensor: Support</p> </div> <div data-bbox="920 1024 1227 1056" data-label="Text"> <p>Appearance: Touch Bar</p> </div> <div data-bbox="920 1083 1279 1115" data-label="Text"> <p>Side Key: 3, Volume, Power</p> </div> <p><a href="http://www.alcatelonetouch.com/usa/products/smartphones/ot-960c.html">http://www.alcatelonetouch.com/usa/products/smartphones/ot-960c.html</a>;</p> <p><b>Alcatel</b> One Touch Ultra 960C sports a pretty decent 4.3-inch <b>capacitive touchscreen</b> display. In addition, the phone is equipped with a 14GHz single-core processor and a 5-megapixel photo snapper on the back.</p>

US RE 43,931	TCL Alcatel One Touch Ultra 960C (“Accused Instrumentality”)
	<p data-bbox="645 236 1877 263"><a href="http://news.softpedia.com/news/Alcatel-One-Touch-Ultra-960C-Lands-at-Alltel-Wireless-299611.shtml">http://news.softpedia.com/news/Alcatel-One-Touch-Ultra-960C-Lands-at-Alltel-Wireless-299611.shtml</a>.</p> <p data-bbox="645 304 2085 363">The following citations show that any device which operates on the Android OS must have either a capacitive or a resistive transducer:</p> <p data-bbox="741 405 954 432"><b>“Virtual Soft Keys</b></p> <p data-bbox="741 435 1570 462">The input system provides special features for implementing virtual soft keys.</p> <p data-bbox="741 466 976 493">There are three cases:</p> <ol data-bbox="696 496 2085 708" style="list-style-type: none"> <li data-bbox="696 496 2085 616">1. If the virtual soft keys are displayed graphically on the screen, as on the Galaxy Nexus, then they are implemented by the Navigation Bar component in the System UI package. Because graphical virtual soft keys are implemented at a high layer in the system, key layout files are not involved and the following information does not apply.</li> <li data-bbox="790 619 2085 708">2. If the virtual soft keys are implemented as an extended touchable region that is part of the main touch screen, as on the Nexus One, then the input system uses a virtual key map file to translate X / Y touch coordinates into Linux key codes, then uses the key layout file to translate Linux key codes into Android key codes.</li> </ol> <p data-bbox="741 711 1626 738">Refer to the section on <a href="#">Touch Devices</a> for more details about virtual key map files.</p> <p data-bbox="741 742 2085 801">The key layout file for the touch screen input device must specify the appropriate key mapping and include the VIRTUAL flag for each key.</p> <ol data-bbox="790 804 2085 893" style="list-style-type: none"> <li data-bbox="790 804 2085 893">3. If the virtual soft keys are implemented as capacitive buttons that are separate from the main touch screen, as on the Nexus S, then the kernel device driver or firmware is responsible for translating touches into Linux key codes which the input system then translates into Android key codes using the key layout file.</li> </ol> <p data-bbox="741 896 2085 956">The key layout file for the capacitive button input device must specify the appropriate key mapping and include the VIRTUAL flag for each key.”</p> <p data-bbox="645 991 1361 1018"><b>Source:</b> <a href="http://source.android.com/tech/input/key-layout-files.html">http://source.android.com/tech/input/key-layout-files.html</a></p> <p data-bbox="645 1021 1037 1048"><b>Last Accessed:</b> September 18, 2014</p>
<p data-bbox="190 1091 622 1383">16. An apparatus, comprising: a housing having a front surface, a rear surface and first and second side surfaces adjoining respective opposite edges of the front surface and extending from the respective opposite edges of the front surface to respective opposite edges of the rear surface, the housing configured</p>	<p data-bbox="645 1091 2085 1219">The Accused Instrumentality is an apparatus, comprising a housing having a front surface, a rear surface and first and second side surfaces adjoining respective opposite edges of the front surface and extending from the respective opposite edges of the front surface to respective opposite edges of the rear surface, the housing configured to be held in a user's hand such that the rear surface confronts the user's palm.</p> <p data-bbox="645 1257 999 1284">For evidence refer to Claim 1.</p>

US RE 43,931	TCL Alcatel One Touch Ultra 960C (“Accused Instrumentality”)
to be held in a user's hand such that the rear surface confronts the user's palm;	
a display, supported by the housing, that displays an image at the front surface of the housing;	<p>The Accused Instrumentality comprises a display, supported by the housing, that displays an image at the front surface of the housing.</p> <p>For evidence refer to Claim 1.</p>
a contact-sensitive transducer, supported by the housing and having a contact-sensitive surface disposed at said front surface, which produces an output signal that characterizes moving contact of an object along the contact-sensitive surface of the contact-sensitive transducer; and	<p>The Accused Instrumentality comprises a contact-sensitive transducer, supported by the housing and having a contact-sensitive surface disposed at said front surface, which produces an output signal that characterizes moving contact of an object along the contact-sensitive surface of the contact-sensitive transducer.</p> <p>For evidence refer to Claim 1.</p>
a controller, selectively responsive to the output signal and operatively associated with the display, which is configured to scroll displayed rows along an axis of the display based on the output signal of the contact-sensitive transducer, the controller having a first mode wherein the controller is responsive to contact with the contact-sensitive transducer and a second mode wherein the controller is unresponsive to contact with the contact-sensitive transducer, the second mode being entered in response to an input from a user.	<p>The Accused Instrumentality comprises a controller, selectively responsive to the output signal and operatively associated with the display, which is configured to scroll displayed rows along an axis of the display based on the output signal of the contact-sensitive transducer, the controller having a first mode wherein the controller is responsive to contact with the contact-sensitive transducer and a second mode wherein the controller is unresponsive to contact with the contact-sensitive transducer, the second mode being entered in response to an input from a user.</p> <p>For evidence refer to Claim 1.</p>
17. An apparatus according to claim	The Accused Instrumentality comprises contact-sensitive surface, when the housing is held within the user's hand such

US RE 43,931	TCL Alcatel One Touch Ultra 960C (“Accused Instrumentality”)
16, wherein the contact-sensitive surface, when the housing is held within the user's hand such that the rear surface confronts the user's palm, confronts a finger or a thumb of the holding hand.	that the rear surface confronts the user's palm, confronts a finger or a thumb of the holding hand.  For evidence refer to Claim 2.
18. An apparatus according to claim 16, wherein the controller is operative to selectively display an image on the display responsive to the output signal of the contact-sensitive transducer.	The Accused Instrumentality comprises a controller operative to selectively display an image on the display responsive to the output signal of the contact-sensitive transducer.  For evidence refer to Claim 3.
19. An apparatus according to claim 18, wherein the controller is operative to selectively display a graphical object on the display responsive to the output signal of the contact-sensitive transducer.	The Accused Instrumentality comprises a controller operative to selectively display a graphical object on the display responsive to the output signal of the contact-sensitive transducer.  For evidence refer to Claim 4.
20. An apparatus according to claim 19, wherein the controller is operative to selectively display a row on the display responsive to the output signal of the contact-sensitive transducer.	The Accused Instrumentality comprises a controller operative to selectively display a row on the display responsive to the output signal of the contact-sensitive transducer.  For evidence refer to Claim 5.
21. An apparatus according to claim 19, wherein the controller is operative to display a plurality of graphical objects on the display, and to identify one of the displayed plurality of graphical objects responsive to the output signal of the contact-sensitive transducer.	The Accused Instrumentality comprises a controller operative to display a plurality of graphical objects on the display, and to identify one of the displayed plurality of graphical objects responsive to the output signal of the contact-sensitive transducer.  For evidence refer to Claim 6.
22. An apparatus according to claim 19, wherein the controller is	The Accused Instrumentality comprises a controller operative, responsive to the contact-sensitive transducer, to determine a position of contact along the axis of the contact-sensitive transducer, and to selectively display a graphical object based



US RE 43,931	TCL Alcatel One Touch Ultra 960C (“Accused Instrumentality”)
operative, responsive to the contact-sensitive transducer, to determine a position of contact along the axis of the contact-sensitive transducer, and to selectively display a graphical object based on the determined position of contact to thereby identify the graphical object.	<p>on the determined position of contact to thereby identify the graphical object.</p> <p>For evidence refer to Claim 7.</p>
23. An apparatus according to claim 22, wherein the controller is operative to highlight one of a plurality of displayed graphical objects responsive to the output signal of the contact-sensitive transducer.	<p>The Accused Instrumentality comprises a controller operative to highlight one of a plurality of displayed graphical objects responsive to the output signal of the contact-sensitive transducer.</p> <p>For evidence refer to Claim 8.</p>
24. An apparatus according to claim 22, wherein the controller is operative to display a cursor that indicates one of a plurality of displayed graphical objects responsive to the output signal of the contact-sensitive transducer.	<p>The Accused Instrumentality comprises a controller operative to display a cursor that indicates one of a plurality of displayed graphical objects responsive to the output signal of the contact-sensitive transducer.</p> <p>For evidence refer to Claim 9.</p>
25. An apparatus according to claim 24, wherein the controller is operative, responsive to the contact-sensitive transducer, to scroll displayed rows along an axis of the display responsive to the output signal of the contact-sensitive transducer.	<p>The Accused Instrumentality comprises a controller operative, responsive to the contact-sensitive transducer, to scroll displayed rows along an axis of the display responsive to the output signal of the contact-sensitive transducer.</p> <p>For evidence refer to Claims 1, 3, and 5.</p>
26. An apparatus according to claim 25, wherein the controller is operative, responsive to the output signal of contact-sensitive	<p>The Accused Instrumentality comprises a controller operative, responsive to the output signal of contact-sensitive transducer, to detect moving contact with the contact-sensitive transducer along the axis of the contact-sensitive transducer, and to scroll displayed rows along the axis of the display based on the detected moving contact.</p>


US RE 43,931	TCL Alcatel One Touch Ultra 960C (“Accused Instrumentality”)
transducer, to detect moving contact with the contact-sensitive transducer along the axis of the contact-sensitive transducer, and to scroll displayed rows along the axis of the display based on the detected moving contact.	For evidence refer to Claim 25.
29. An apparatus according to claim 22, wherein the contact-sensitive transducer comprises one of a resistive transducer, a capacitive transducer and a semiconductive transducer.	<p>The Accused Instrumentality employs a contact-sensitive surface (touch screen) supported by a contact-sensitive transducer which comprises one of a resistive transducer, a capacitive transducer and a semiconductive transducer.</p> <p>For evidence refer to Claim 15.</p>
30. An apparatus, comprising: a housing having a front surface, a rear surface and first and second side surfaces adjoining respective opposite sides of the front surface and extending from the respective opposite sides of the front surface to respective opposite sides of the rear surface, the housing configured to be held in a user's hand such that the rear surface confronts the user's palm;	<p>The Accused Instrumentality is an apparatus comprising a housing having a front surface, a rear surface and first and second side surfaces adjoining respective opposite sides of the front surface and extending from the respective opposite sides of the front surface to respective opposite sides of the rear surface, the housing configured to be held in a user's hand such that the rear surface confronts the user's palm.</p> <p>For evidence refer to Claim 1.</p>
a display, supported by the housing, that displays an image at a front surface of the housing;	<p>The Accused Instrumentality is an apparatus comprising a display, supported by the housing, that displays an image at a front surface of the housing.</p> <p>For evidence refer to Claim 1.</p>
a contact-sensitive transducer, supported by the housing, which produces an output signal in response to moving contact of an	The Accused Instrumentality is an apparatus comprising a contact-sensitive transducer, supported by the housing, which produces an output signal in response to moving contact of an object along the contact-sensitive surface of the contact-sensitive transducer.

US RE 43,931	TCL Alcatel One Touch Ultra 960C (“Accused Instrumentality”)
object along the contact-sensitive surface of the contact-sensitive transducer; and	For evidence refer to Claim 1.
a controller, responsive to the output signal and operatively associated with the display, which scrolls displayed rows along an axis of the display based on the output signal of the contact-sensitive transducer, the controller having a first mode wherein the controller is responsive to contact with the contact-sensitive transducer and a second mode wherein the controller is unresponsive to contact with the contact-sensitive transducer, the second mode being entered in response to an input from a user.	<p>The Accused Instrumentality is an apparatus comprising a controller, responsive to the output signal and operatively associated with the display, which scrolls displayed rows along an axis of the display based on the output signal of the contact-sensitive transducer, the controller having a first mode wherein the controller is responsive to contact with the contact-sensitive transducer and a second mode wherein the controller is unresponsive to contact with the contact-sensitive transducer, the second mode being entered in response to an input from a user.</p> <p>For evidence refer to Claim 1.</p>
31. An apparatus according to claim 30, further comprising a radiotelephone communications transceiver supported by the housing, and wherein the controller is operative to control the radiotelephone communications transceiver according to the output signal.	<p>The Accused Instrumentality is an apparatus comprising a radiotelephone communications transceiver supported by the housing, and wherein the controller is operative to control the radiotelephone communications transceiver according to the output signal.</p> <p>For evidence refer to Claim 1.</p>
33. In an apparatus including a housing having a front surface, a rear surface and first and second side surfaces adjoining respective opposite edges of the front surface and extending from the respective	<p>The Accused Instrumentality is an apparatus including a housing having a front surface, a rear surface and first and second side surfaces adjoining respective opposite edges of the front surface and extending from the respective opposite edges of the front surface to respective opposite edges of the rear surface, a display that displays an image at the front surface, and a controller that controls the display, a method of providing user input.</p> <p>For evidence refer to Claim 1.</p>

US RE 43,931	TCL Alcatel One Touch Ultra 960C (“Accused Instrumentality”)
opposite edges of the front surface to respective opposite edges of the rear surface, a display that displays an image at the front surface, and a controller that controls the display, a method of providing user input comprising the steps of:	
holding the housing in a user's hand such that the rear surface confronts the user's palm and the display projects away from the user's palm;	<p>The Accused Instrumentality is an apparatus with a method of providing user input which comprises the step of holding the housing in a user's hand such that the rear surface confronts the user's palm and the display projects away from the user's palm.</p> <p>For evidence refer to Claims 1, 3 and 6.</p>
providing user input to the controller using a contact-sensitive transducer having a contact-sensitive surface disposed at said front surface of the housing, the transducer being operable to produce an output signal that characterizes contact with the contact-sensitive surface of the contact-sensitive transducer; and	<p>The Accused Instrumentality is an apparatus with a method of providing user input to the controller using a contact-sensitive transducer having a contact-sensitive surface disposed at said front surface of the housing, the transducer being operable to produce an output signal that characterizes contact with the contact-sensitive surface of the contact-sensitive transducer.</p> <p>For evidence refer to Claims 1, 3 and 6.</p>
providing user input to the controller to select a first mode wherein the controller is responsive to contact with the contact-sensitive transducer and a second mode wherein the controller is unresponsive to contact with the contact-sensitive transducer, the second mode being entered in response to a user input.	<p>The Accused Instrumentality is an apparatus with a method of providing user input to the controller to select a first mode wherein the controller is responsive to contact with the contact-sensitive transducer and a second mode wherein the controller is unresponsive to contact with the contact-sensitive transducer, the second mode being entered in response to a user input.</p> <p>For evidence refer to Claims 1, 3 and 6.</p>
34. A method according to claim	The Accused Instrumentality is an apparatus with a method of providing user input wherein the step of providing

US RE 43,931	TCL Alcatel One Touch Ultra 960C (“Accused Instrumentality”)
<p>33, wherein the step of providing comprises the step of contacting the contact-sensitive transducer with a thumb or finger of the holding hand while holding the housing in the user's hand such that the rear surface confronts the user's palm and the display projects away from the user's palm.</p>	<p>comprises the step of contacting the contact-sensitive transducer with a thumb or finger of the holding hand while holding the housing in the user's hand such that the rear surface confronts the user's palm and the display projects away from the user's palm.</p> <p>For evidence refer to Claims 1 and 2.</p>
<p>35. A method according to claim 33, wherein the apparatus is a radiotelephone that further includes a radiotelephone communications transceiver, wherein the controller is operative to control the radiotelephone communications transceiver, and wherein the step of providing user input comprises the step of controlling at least one of the radiotelephone communications transceiver and the display according to the output signal of the contact-sensitive transducer.</p>	<p>The Accused Instrumentality is a radiotelephone that further includes a radiotelephone communications transceiver, wherein the controller is operative to control the radiotelephone communications transceiver, and wherein the step of providing user input comprises the step of controlling at least one of the radiotelephone communications transceiver and the display according to the output signal of the contact-sensitive transducer.</p> <p>For evidence refer to Claims 1, 3 and 6.</p>
<p>36. A method according to claim 33, wherein the step of controlling comprises the step of selectively displaying an image or the display according to the output signal of the contact-sensitive transducer.</p>	<p>The Accused Instrumentality is a radiotelephone that further includes a radiotelephone communications transceiver, wherein the controller is operative to control the radiotelephone communications transceiver, wherein the step of controlling comprises the step of selectively displaying an image or the display according to the output signal of the contact-sensitive transducer.</p> <p>For evidence refer to Claims 1, 3 and 6.</p>
<p>37. An apparatus according to claim 30, wherein the surface of the contact-sensitive transducer, when the housing is held within the user's hand such that the rear surface</p>	<p>The Accused Instrumentality is an apparatus comprising a contact-sensitive surface wherein the surface of the contact-sensitive transducer, when the housing is held within the user's hand such that the rear surface confronts the user's palm, can be engaged by the thumb of the holding hand.</p> <p>For evidence refer to Claims 1 and 2.</p>

US RE 43,931	TCL Alcatel One Touch Ultra 960C (“Accused Instrumentality”)
confronts the user's palm, can be engaged by the thumb of the holding hand.	
38. An apparatus according to claim 30, wherein the surface of the contact-sensitive transducer, when the housing is held within the user's hand such that the rear surface confronts the user's palm, can be engaged by a finger of or other object held in the other hand of the user than the holding hand.	<p>The Accused Instrumentality is an apparatus wherein the surface of the contact-sensitive transducer, when the housing is held within the user's hand such that the rear surface confronts the user's palm, can be engaged by a finger of or other object held in the other hand of the user than the holding hand.</p> <p>For evidence refer to Claims 1 and 2.</p>
39. An apparatus according to claim 38, wherein the contact-sensitive transducer is disposed on the front surface of the housing.	<p>The Accused Instrumentality is an apparatus wherein the contact-sensitive transducer is disposed on the front surface of the housing.</p> <p>For evidence refer to Claim 1.</p>
40. An apparatus according to claim 39, wherein the contact-sensitive transducer is an elongate strip.	<p>The Accused Instrumentality is an apparatus with a contact-sensitive surface which comprises a contact-sensitive transducer which is an elongate strip.</p> <p>For evidence refer to Claim 1.</p>
41. An apparatus according to claim 30, wherein the contact-sensitive transducer comprises one of a resistive transducer a capacitive transducer and a semiconductive transducer.	<p>The Accused Instrumentality employs a contact-sensitive surface (touch screen) supported by a contact-sensitive transducer wherein the contact-sensitive transducer comprises one of a resistive transducer a capacitive transducer and a semiconductive transducer.</p> <p>For evidence refer to Claim 15.</p>
45. An apparatus according to claim 30, wherein the output signal is produced in response to moving contact with the contact-sensitive transducer along the axis of the contact-sensitive transducer.	<p>The Accused Instrumentality is an apparatus wherein the output signal is produced in response to moving contact with the contact-sensitive transducer along the axis of the contact-sensitive transducer.</p> <p>For evidence refer to Claims 1 and 30.</p>
46. An apparatus according to claim 30, wherein the output signal is	<p>The Accused Instrumentality is an apparatus wherein the output signal is produced in response to moving contact with the contact-sensitive transducer along the surface of the contact-sensitive transducer.</p>

US RE 43,931	TCL Alcatel One Touch Ultra 960C (“Accused Instrumentality”)
<p>produced in response to moving contact with the contact-sensitive transducer along the surface of the contact-sensitive transducer.</p>	<p>For evidence refer to Claims 1 and 30.</p>
<p>47. An apparatus according to claim 30 further comprising: a second contact-sensitive transducer, supported by the housing, which produces a second output signal that characterizes contact of an object along the contact-sensitive surface of the second contact-sensitive transducer, and</p>	<p>The Accused Instrumentality is an apparatus comprising: a second contact-sensitive transducer, supported by the housing, which produces a second output signal that characterizes contact of an object along the contact-sensitive surface of the second contact-sensitive transducer.</p> <p>For example, the Accused Instrumentality is an apparatus supports multi-touch functionality, which shows that there is a second contact-sensitive transducer supported by the housing, as shown below:</p> <p><b>I.3.1 Using the touchscreen</b></p> <p><b>Pinch/Spread</b></p>  <p>Place your fingers of one hand on the screen surface and draw them apart or together to scale an element on the screen.</p> <p>Alcatel One Touch Ultra 960C User Manual, p.18;</p>


US RE 43,931	TCL Alcatel One Touch Ultra 960C (“Accused Instrumentality”)
	<div data-bbox="728 252 1489 719" data-label="Image"> </div> <p data-bbox="645 743 1243 775">Alcatel One Touch Ultra 960C User Manual, p.85;</p> <ul data-bbox="663 823 1585 890" style="list-style-type: none"> <li>• Touch an album, pinch it with two fingers and then all pictures or videos will spread the screen.</li> </ul> <p data-bbox="645 903 1243 935">Alcatel One Touch Ultra 960C User Manual, p.85;</p> <p data-bbox="645 1007 2083 1102">The following citation is an excerpt from the Tech Info page of the Android developer website which shows that the Android OS provides support for multi-touch which shows that there is a second contact-sensitive transducer supported by the housing:</p> <p data-bbox="741 1142 1189 1166"><b>“Indirect Multi-touch Pointer Gestures</b></p> <p data-bbox="741 1174 1397 1198">In pointer mode, the system interprets the following gestures:</p> <ol data-bbox="790 1206 2083 1382" style="list-style-type: none"> <li>1. Single finger tap: click.</li> <li>2. Single finger motion: move the pointer.</li> <li>3. Single finger motion plus button presses: drag the pointer.</li> <li>4. Two finger motion both fingers moving in the same direction: drag the area under the pointer in that direction. The pointer itself does not move.</li> <li>5. Two finger motion both fingers moving towards each other or apart in different directions: pan/scale/rotate the area</li> </ol>



US RE 43,931	TCL Alcatel One Touch Ultra 960C (“Accused Instrumentality”)
	<p>surrounding the pointer. The pointer itself does not move.  6. Multiple finger motion: freeform gesture.”</p> <p><b>Source:</b> <a href="http://source.android.com/tech/input/touch-devices.html">http://source.android.com/tech/input/touch-devices.html</a>  <b>Last Accessed:</b> September 18, 2014</p>
<p>a controller, responsive to the second output signal for controlling a function of the apparatus.</p>	<p>The Accused Instrumentality has a controller responsive to the second output signal for controlling a function of the apparatus.</p> <p>For example, the following citation is an excerpt from the Tech Info page of the Android developer website which shows that the Android OS provides support for multi-touch which shows that there is a second contact-sensitive transducer supported by the housing:</p> <p style="padding-left: 40px;"><b>“Indirect Multi-touch Pointer Gestures</b>  In pointer mode, the system interprets the following gestures:</p> <ol style="list-style-type: none"> <li>1. Single finger tap: click.</li> <li>2. Single finger motion: move the pointer.</li> <li>3. Single finger motion plus button presses: drag the pointer.</li> <li>4. Two finger motion both fingers moving in the same direction: drag the area under the pointer in that direction. The pointer itself does not move.</li> <li>5. Two finger motion both fingers moving towards each other or apart in different directions: pan/scale/rotate the area surrounding the pointer. The pointer itself does not move.</li> <li>6. Multiple finger motion: freeform gesture.”</li> </ol> <p><b>Source:</b> <a href="http://source.android.com/tech/input/touch-devices.html">http://source.android.com/tech/input/touch-devices.html</a>  <b>Last Accessed:</b> September 18, 2014</p> <p>For additional evidence refer to claims 1, 3, and 6.</p>
<p>48. An apparatus according to claim 47, wherein the second output signal is produced in response to detection of momentary contact with said second contact-sensitive transducer.</p>	<p>The Accused Instrumentality is an apparatus wherein the second output signal is produced in response to detection of momentary contact with said second contact-sensitive transducer.</p> <p>For evidence refer to Claim 47.</p>

US RE 43,931	TCL Alcatel One Touch Ultra 960C (“Accused Instrumentality”)
<p>49. An apparatus according to claim 47, wherein the second output signal is produced in response to detection of a predetermined number of momentary contacts with said second contact-sensitive transducer within a predetermined time interval.</p>	<p>The Accused Instrumentality is an apparatus wherein the second output signal is produced in response to detection of a predetermined number of momentary contacts with said second contact-sensitive transducer within a predetermined time interval.</p> <p>For example, the following citation is an excerpt from the Tech Info page of the Android developer website which shows that the Android OS provides support for multi-touch and follows different protocols to respond to user inputs:</p> <ol style="list-style-type: none"> <li>11. A tool is determined to be active based on the following conditions: <ul style="list-style-type: none"> <li>o When using the single-touch protocol, the tool is active if BTN_TOUCH, or BTN_TOOL_* is 1. This condition implies that the InputReader needs to have at least some information about the nature of the tool, either whether it is touching, or at least its tool type. If no information is available, then the tool is assumed to be inactive (out of range).</li> <li>o When using the multi-touch protocol 'A', the tool is active whenever it appears in the most recent sync report. When the tool stops appearing in sync reports, it ceases to exist.</li> <li>o When using the multi-touch protocol 'B', the tool is active as long as it has an active slot. When the slot it cleared, the tool ceases to exist.</li> </ul> </li> <li>12. A tool is determined to be hovering based on the following conditions: <ul style="list-style-type: none"> <li>o If the tool is BTN_TOOL_MOUSE or BTN_TOOL_LENS, then the tool is not hovering, even if either of the following conditions are true.</li> <li>o If the tool is active and the driver reports pressure information, and the reported pressure is zero, then the tool is hovering.</li> <li>o If the tool is active and the driver supports the BTN_TOUCH key code and BTN_TOUCH has a value of zero, then the tool is hovering.</li> </ul> </li> <li>13. The InputReader supports both multi-touch protocol 'A' and 'B'. New drivers should use the 'B' protocol but either will work.</li> </ol> <p><b>Source:</b> <a href="http://source.android.com/tech/input/touch-devices.html">http://source.android.com/tech/input/touch-devices.html</a>  <b>Last Accessed:</b> September 18, 2014</p> <p>For additional evidence refer to Claim 47.</p>
<p>50. An apparatus according to claim 30, wherein said controller scrolls the displayed rows by identifying successive ones of the rows displayed along the axis of said display based on the output signal</p>	<p>The Accused Instrumentality comprises a controller which scrolls the displayed rows by identifying successive ones of the rows displayed along the axis of said display based on the output signal from said transducer.</p> <p>For evidence refer to Claims 1 and 5.</p>

US RE 43,931	TCL Alcatel One Touch Ultra 960C (“Accused Instrumentality”)
from said transducer.	
51. An apparatus according to claim 50, wherein the direction of scroll is transverse to the direction that said rows extend across the display.	<p>The Accused Instrumentality comprises a controller which scrolls wherein the direction of scroll is transverse to the direction that the rows extend across the display.</p> <p>For evidence refer to Claims 1, 3 and 6.</p>
52. An apparatus according to claim 50, wherein said rows consist of alphanumeric characters comprising menu selections.	<p>The Accused Instrumentality comprises a controller which scrolls wherein the rows consist of alphanumeric characters comprising menu selections.</p> <p>For evidence refer to Claims 1, 3 and 6.</p>
53. An apparatus according to claim 50, wherein said controller identifies successive ones of the rows displayed along the axis of said display by highlighting successive said rows.	<p>The Accused Instrumentality comprises a controller wherein the controller identifies successive ones of the rows displayed along the axis of said display by highlighting successive said rows.</p> <p>For evidence refer to Claims 1, 3 and 6.</p>
54. An apparatus according to claim 30 further comprising a power supply disposed inside said housing.	<p>The Accused Instrumentality comprises a power supply disposed inside said housing.</p> <p>For example, the Accused Instrumentality has a battery disposed inside the housing, as shown below:</p>

US RE 43,931	TCL Alcatel One Touch Ultra 960C (“Accused Instrumentality”)
	<p data-bbox="669 245 1184 280"><b>Removing or installing the battery</b></p>  <ul data-bbox="669 504 1630 799" style="list-style-type: none"> <li>• Remove the battery cover from the unit.</li> <li>• Align the battery's exposed gold contacts with the battery connectors inside the battery compartment.</li> <li>• Insert the contact side of the battery first and then gently push the battery into place.</li> <li>• Replace the battery cover over the battery compartment and press down until you hear a click.</li> </ul> <p data-bbox="647 823 1240 852">Alcatel One Touch Ultra 960C User Manual, p.14.</p>
55. An apparatus according to claim 54, wherein said power supply comprises a battery.	<p data-bbox="647 892 1704 920">The Accused Instrumentality comprises a power supply which further comprises a battery.</p> <p data-bbox="647 959 1016 987">For evidence refer to Claim 54.</p>
56. An apparatus according to claim 55 further comprising a circuit which controls power transfer from the power supply too another circuit based on the output signal of the contact-sensitive transducer.	<p data-bbox="647 995 2080 1059">The Accused Instrumentality comprises a circuit which controls power transfer from the power supply too another circuit based on the output signal of the contact-sensitive transducer.</p> <p data-bbox="647 1098 2080 1161">The Accused Instrumentality in response to a user input performs voice and data services which needs power transfer from the power supply to another circuit like a microphone, wireless chipset etc...</p> <p data-bbox="647 1200 1099 1228">For evidence refer to Claims 1 and 54.</p>
57. An apparatus according to claim 30 further comprising a mode of operation wherein the controller is unresponsive to contact with the contact-sensitive transducer.	<p data-bbox="647 1235 2080 1299">The Accused Instrumentality is an apparatus which comprises a mode of operation wherein the controller is unresponsive to contact with the contact-sensitive transducer.</p> <p data-bbox="647 1337 2080 1401">The Accused Instrumentality operates in a power off mode wherein the controller is unresponsive to any contact with the contact-sensitive transducer.</p>

US RE 43,931	TCL Alcatel One Touch Ultra 960C (“Accused Instrumentality”)
	For evidence refer to Claim 1.
58. An apparatus for providing user input to a hand-held electronic device, comprising: a housing for containing the electronics for performing the intended user functions of the device, said housing having a front surface, a rear surface and first and second side surfaces adjoining respective opposite sides of the front surface and extending from the respective opposite sides of the front surface to respective opposite sides of the rear surface, the housing configured to be held in a user's hand such that the rear surface confronts the user's palm;	<p>The Accused Instrumentality is an apparatus for providing user input to a hand-held electronic device, comprising: a housing for containing the electronics for performing the intended user functions of the device, said housing having a front surface, a rear surface and first and second side surfaces adjoining respective opposite sides of the front surface and extending from the respective opposite sides of the front surface to respective opposite sides of the rear surface, the housing configured to be held in a user's hand such that the rear surface confronts the user's palm.</p> <p>For evidence refer to Claim 1.</p>
a display located on the front surface of the housing for displaying user-interface information for the electronic device, said information including an image of rows of menu selectable items;	<p>The Accused Instrumentality supports a display located on the front surface of the housing for displaying user-interface information for the electronic device, said information including an image of rows of menu selectable items.</p> <p>For evidence refer to Claim 1.</p>
a contact-sensitive transducer, supported by the front surface of the housing, which produces an output signal that characterizes moving contact of an object along the contact-sensitive surface of the contact-sensitive transducer; and	<p>The Accused Instrumentality supports a contact-sensitive transducer, supported by the front surface of the housing, which produces an output signal that characterizes moving contact of an object along the contact-sensitive surface of the contact-sensitive transducer.</p> <p>For evidence refer to Claim 1.</p>
a controller, responsive to the	The Accused Instrumentality supports a controller, responsive to the output signal and operatively associated with the

US RE 43,931	TCL Alcatel One Touch Ultra 960C (“Accused Instrumentality”)
<p>output signal and operatively associated with the display, which scrolls displayed rows of said menu selectable items along an axis of the display based upon the output signal of the contact-sensitive transducer to enable selection of a particular item by the user to provide input to the electronic device, the controller having a first mode wherein the controller is responsive to contact with the contact-sensitive transducer and a second mode wherein the controller is unresponsive to contact with the contact-sensitive transducer, the second mode being entered in response to an input from a user.</p>	<p>display, which scrolls displayed rows of said menu selectable items along an axis of the display based upon the output signal of the contact-sensitive transducer to enable selection of a particular item by the user to provide input to the electronic device, the controller having a first mode wherein the controller is responsive to contact with the contact-sensitive transducer and a second mode wherein the controller is unresponsive to contact with the contact-sensitive transducer, the second mode being entered in response to an input from a user.</p> <p>For evidence refer to Claim 1.</p>
<p>59. An apparatus according to claim 58, wherein the displayed rows of menu selectable items comprise a plurality of items in a list.</p>	<p>The Accused Instrumentality is an apparatus wherein the displayed rows of menu selectable items comprise a plurality of items in a list.</p> <p>For evidence refer to Claims 1, 3 and 6.</p>
<p>60. An apparatus according to claim 58 further comprising a power supply disposed inside said housing.</p>	<p>The Accused Instrumentality comprises a power supply disposed inside the housing.</p> <p>For evidence refer to Claim 54.</p>
<p>61. An apparatus according to claim 60, wherein said power supply comprises a battery.</p>	<p>The Accused Instrumentality comprises a power supply which comprises a battery.</p> <p>For evidence refer to Claim 55.</p>
<p>62. An apparatus according to claim 61 further comprising a circuit which controls power transfer from the power supply to another circuit based on the output signal of the contact-sensitive transducer.</p>	<p>The Accused Instrumentality comprises a circuit which controls power transfer from the power supply to another circuit based on the output signal of the contact-sensitive transducer.</p> <p>For evidence refer to Claim 56.</p>

US RE 43,931	TCL Alcatel One Touch Ultra 960C (“Accused Instrumentality”)
63. An apparatus according to claim 58 further comprising a mode of operation wherein the controller is unresponsive to contact with the contact-sensitive transducer.	<p>The Accused Instrumentality is an apparatus which comprises a mode of operation wherein the controller is unresponsive to contact with the contact-sensitive transducer.</p> <p>The Accused Instrumentality operates in a power off mode wherein the controller is unresponsive to any contact with the contact-sensitive transducer.</p> <p>For evidence refer to Claim 1.</p>
64. An apparatus, comprising: a housing having a front surface and a rear surface, the housing configured to be held in a user's hand such that the rear surface confronts the user's palm;	<p>The Accused Instrumentality is an apparatus comprising a housing having a front surface and a rear surface, the housing configured to be held in a user's hand such that the rear surface confronts the user's palm.</p> <p>For evidence refer to Claim 1.</p>
a display, supported by the housing, that displays an image at a front surface of the housing;	<p>The Accused Instrumentality is an apparatus comprises a display, supported by the housing, which displays an image at a front surface of the housing.</p> <p>For evidence refer to Claim 1.</p>
a contact-sensitive transducer, supported by a front surface of the housing, which produces an output signal that characterizes moving contact of an object along the contact-sensitive surface of the contact-sensitive transducer; and	<p>The Accused Instrumentality is an apparatus comprises a contact-sensitive transducer, supported by a front surface of the housing, which produces an output signal that characterizes moving contact of an object along the contact-sensitive surface of the contact-sensitive transducer.</p> <p>For evidence refer to Claim 1.</p>
a controller, responsive to the output signal and operatively associated with the display which scrolls displayed rows along an axis of the display based on the output signal of the contact-sensitive transducer, the controller having a first mode wherein the controller is responsive to contact with the contact-sensitive transducer and a	<p>The Accused Instrumentality is an apparatus comprises a controller, responsive to the output signal and operatively associated with the display which scrolls displayed rows along an axis of the display based on the output signal of the contact-sensitive transducer, the controller having a first mode wherein the controller is responsive to contact with the contact-sensitive transducer and a second mode wherein the controller is unresponsive to contact with the contact-sensitive transducer, the second mode being entered in response to user input.</p> <p>For evidence refer to Claim 1.</p>

US RE 43,931	TCL Alcatel One Touch Ultra 960C (“Accused Instrumentality”)
second mode wherein the controller is unresponsive to contact with the contact-sensitive transducer, the second mode being entered in response to user input.	
65. An apparatus according to claim 64, wherein the surface of the contact-sensitive transducer, when the housing is held within the user's hand such that the rear surface confronts the user's palm, can be engaged by the thumb of the holding hand.	<p>The Accused Instrumentality is an apparatus comprises a contact-sensitive surface wherein the surface of the contact-sensitive transducer, when the housing is held within the user's hand such that the rear surface confronts the user's palm, can be engaged by the thumb of the holding hand.</p> <p>For evidence refer to Claims 1 and 2.</p>
66. An apparatus according to claim 64, wherein the surface of the contact-sensitive transducer, when the housing is held within the user's hand such that the rear surface confronts the user's palm, can be engaged by a finger of or other object held in the other hand of the user than the holding hand.	<p>The Accused Instrumentality is an apparatus comprises a contact-sensitive surface wherein the surface of the contact-sensitive transducer, when the housing is held within the user's hand such that the rear surface confronts the user's palm, can be engaged by a finger of or other object held in the other hand of the user than the holding hand.</p> <p>For evidence refer to Claims 1 and 2.</p>
67. An apparatus according to claim 66, wherein the contact-sensitive transducer is disposed on the front surface of the housing.	<p>The Accused Instrumentality is an apparatus comprises a contact-sensitive transducer wherein the contact-sensitive transducer is disposed on the front surface of the housing.</p> <p>For evidence refer to Claims 1 and 2.</p>
68. An apparatus according to claim 67, wherein the contact-sensitive transducer is an elongate strip.	<p>The Accused Instrumentality is an apparatus comprises a contact-sensitive transducer wherein the contact-sensitive transducer is an elongate strip.</p> <p>For evidence refer to Claims 1 and 2.</p>
69. An apparatus according to claim 64, wherein the contact-sensitive transducer comprises one of a resistive transducer, a capacitive	<p>The Accused Instrumentality employs a contact-sensitive surface (touch screen) supported by a contact-sensitive transducer wherein the contact-sensitive transducer comprises one of a resistive transducer, a capacitive transducer and a semiconductive transducer.</p>



US RE 43,931	TCL Alcatel One Touch Ultra 960C (“Accused Instrumentality”)
transducer and a semiconductive transducer.	For evidence refer to Claim 15.