



US006363259B1

(12) **United States Patent**  
**Larsen**

(10) **Patent No.:** **US 6,363,259 B1**  
(45) **Date of Patent:** **\*Mar. 26, 2002**

(54) **USER INTERFACE FOR A RADIO TELEPHONE**

(75) Inventor: **Flemming Klovborg Larsen,**  
Copenhagen (DK)

(73) Assignee: **Nokia Mobile Phones Ltd.,** Espoo (FI)

(\*) Notice: This patent issued on a continued prosecution application filed under 37 CFR 1.53(d), and is subject to the twenty year patent term provisions of 35 U.S.C. 154(a)(2).

Subject to any disclaimer, the term of this patent is extended or adjusted under 35 U.S.C. 154(b) by 0 days.

This patent is subject to a terminal disclaimer.

5,422,656 A	*	6/1995	Allard et al. ....	345/173
5,479,476 A		12/1995	Finke-Anlauff .....	379/58
5,542,103 A	*	7/1996	Mottier et al. ....	455/89
5,584,054 A	*	12/1996	Tyneski et al. ....	455/89
5,594,778 A	*	1/1997	Schaupp, Jr. et al. ....	379/58
5,633,912 A	*	5/1997	Tsoi .....	379/58
5,758,295 A	*	5/1998	Ahlberg et al. ....	455/566
5,852,783 A	*	12/1998	Tabé et al. ....	455/550
5,870,683 A	*	2/1999	Wells et al. ....	455/566
5,884,185 A	*	3/1999	Kim .....	455/550
5,966,671 A	*	10/1999	Mitchell et al. ....	455/575
6,026,161 A	*	2/2000	Larsen et al. ....	379/433

**FOREIGN PATENT DOCUMENTS**

EP	633684	*	1/1995
EP	679003	*	10/1995

\* cited by examiner

*Primary Examiner*—Nay Maung

*Assistant Examiner*—Joy K. Contee

(74) *Attorney, Agent, or Firm*—Perman & Green, LLP

(21) Appl. No.: **08/975,126**

(22) Filed: **Nov. 20, 1997**

(30) **Foreign Application Priority Data**

Nov. 22, 1996 (GB) ..... 9624520

(51) **Int. Cl.<sup>7</sup>** ..... **H04Q 7/00**

(52) **U.S. Cl.** ..... **455/550; 455/566; 455/575**

(58) **Field of Search** ..... 455/550, 566, 455/575, 90; 379/354, 355, 433

(56) **References Cited**

**U.S. PATENT DOCUMENTS**

4,117,542 A 9/1978 Klausner et al. .... 364/900

(57) **ABSTRACT**

A radiophone comprises a user interface and a controller unit connected to the user interface. The user interface i.e. comprises a display and a keypad having at least one operation key whose function is controlled by the controller unit and is displayed in a predetermined area of the display. The function of said at least one operation key is displayed in a predetermined area of the display. The radiophone is capable of assuming a plurality of states in which a group of predetermined actions associated with the state concerned may be performed by said at least one operation key. The controller unit displays one of said group of actions as a default function in the predetermined area of display.

**8 Claims, 8 Drawing Sheets**

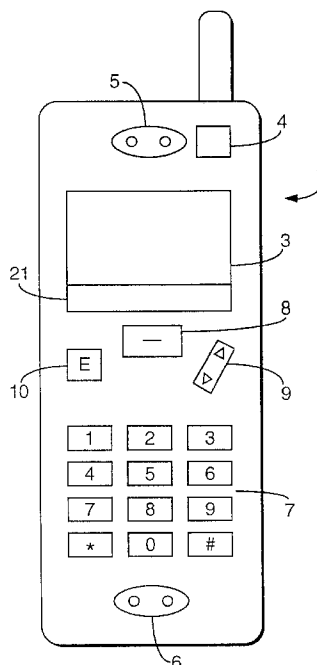
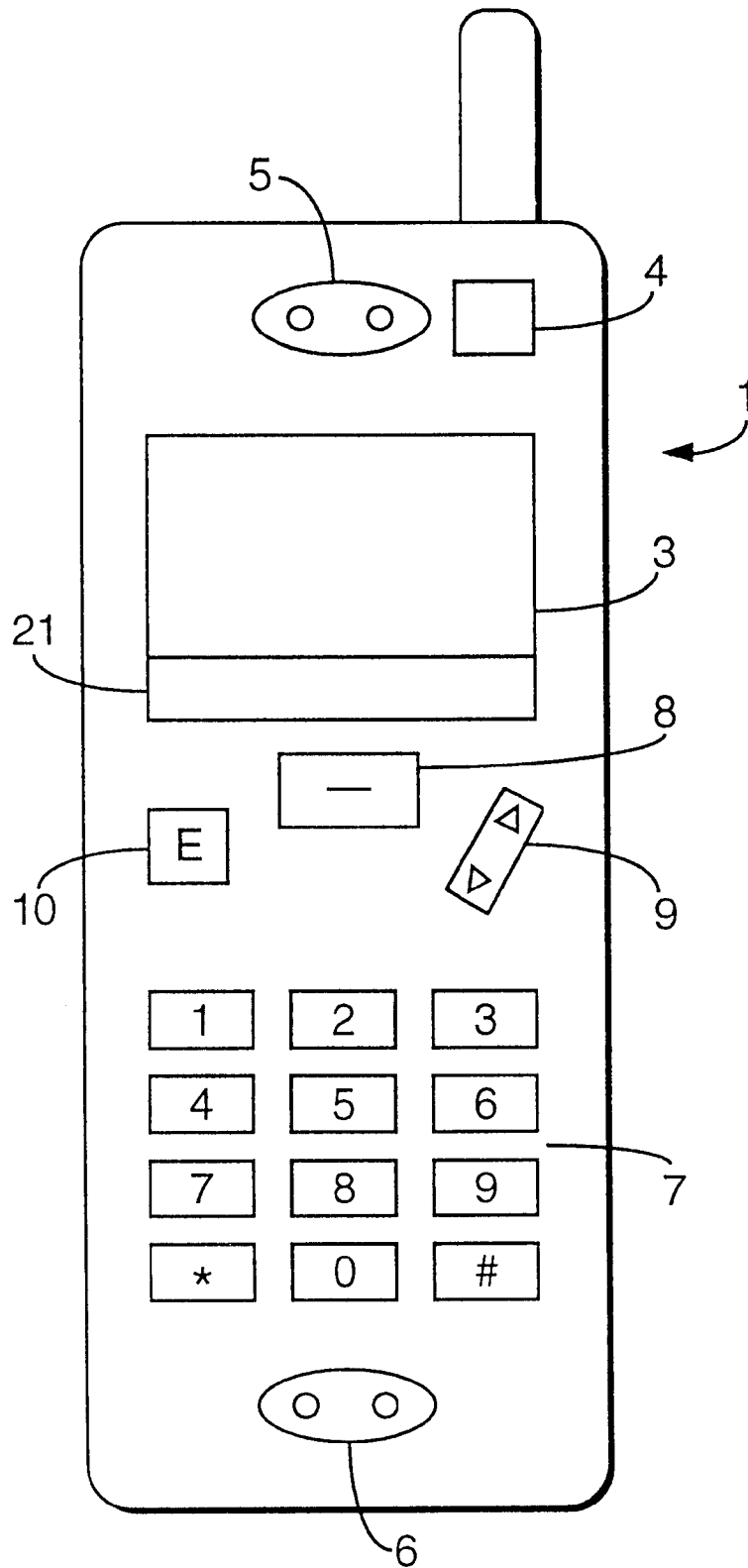


Fig.1.



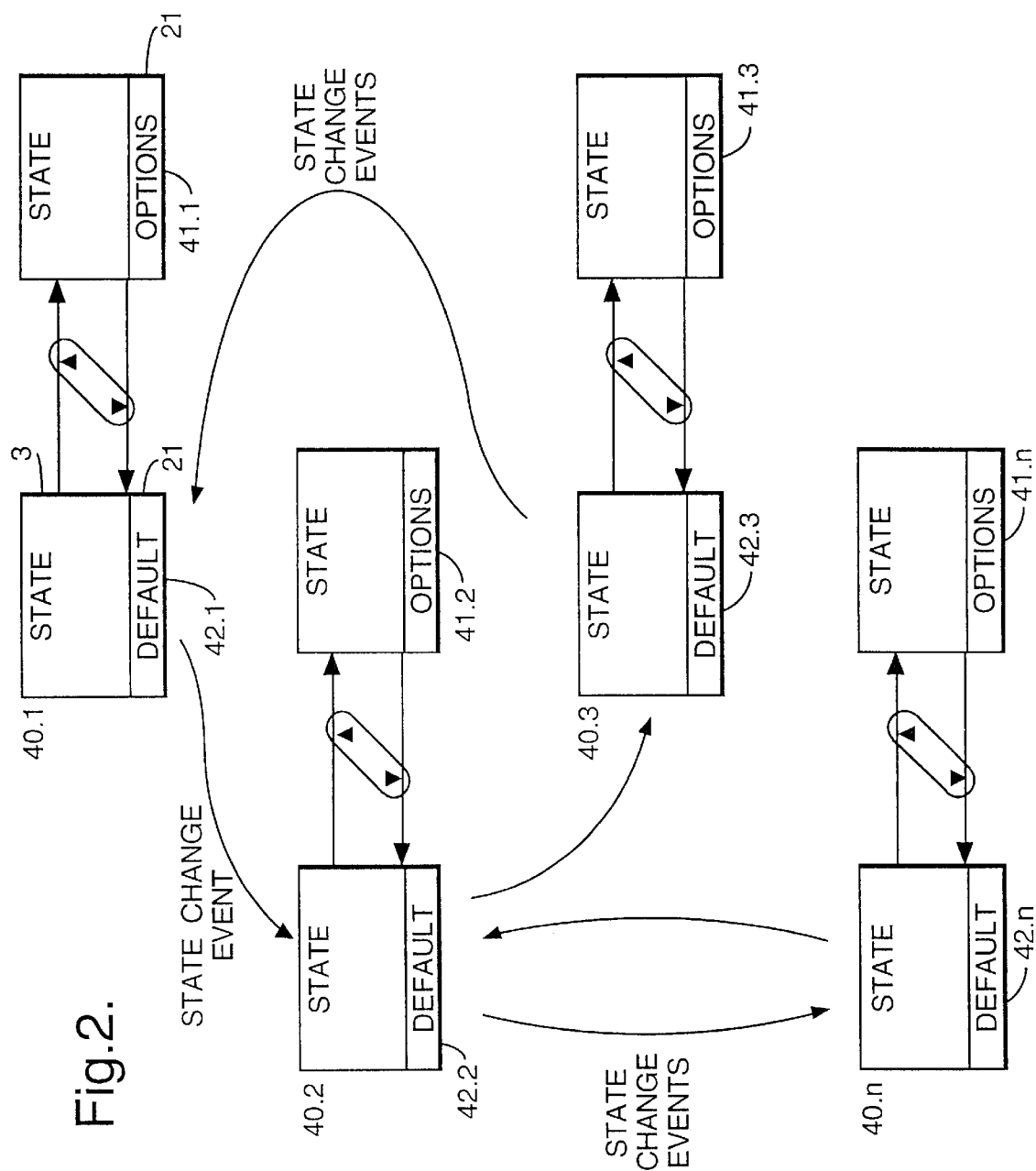


Fig.3.

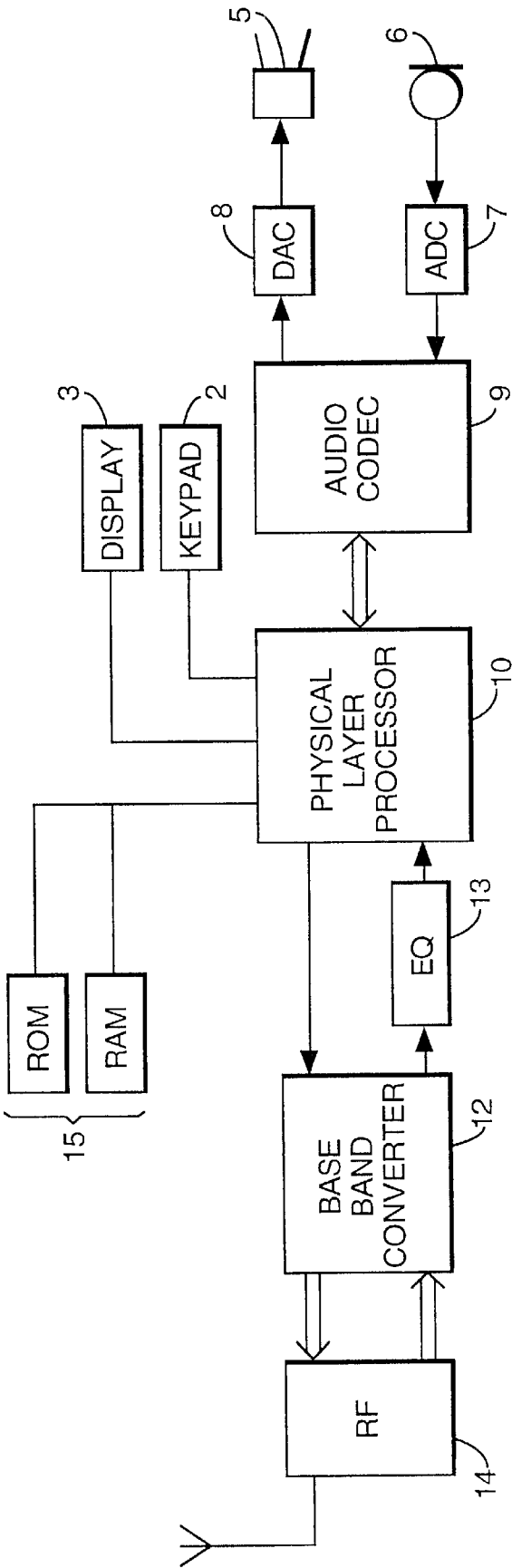


Fig.4.

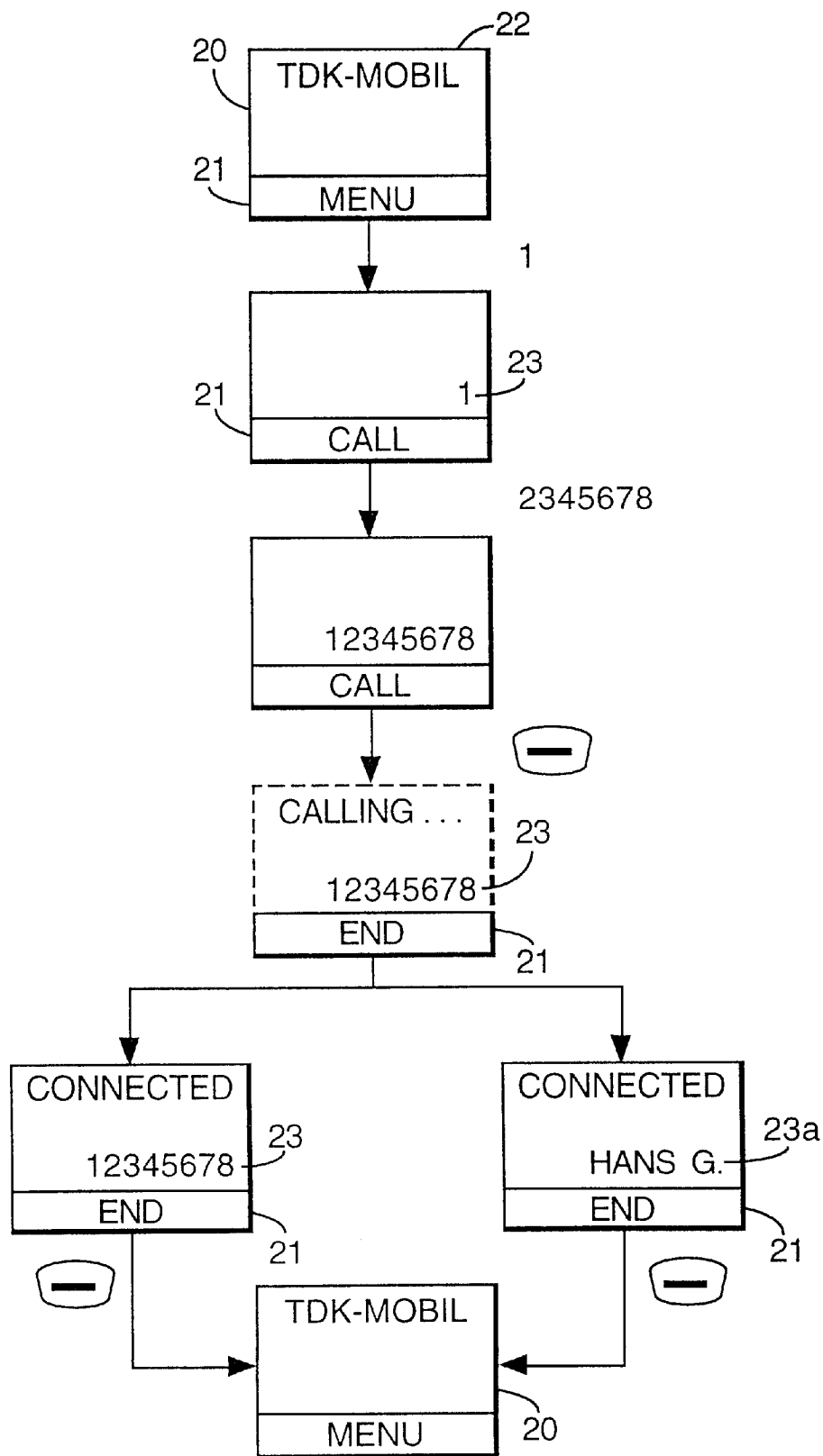
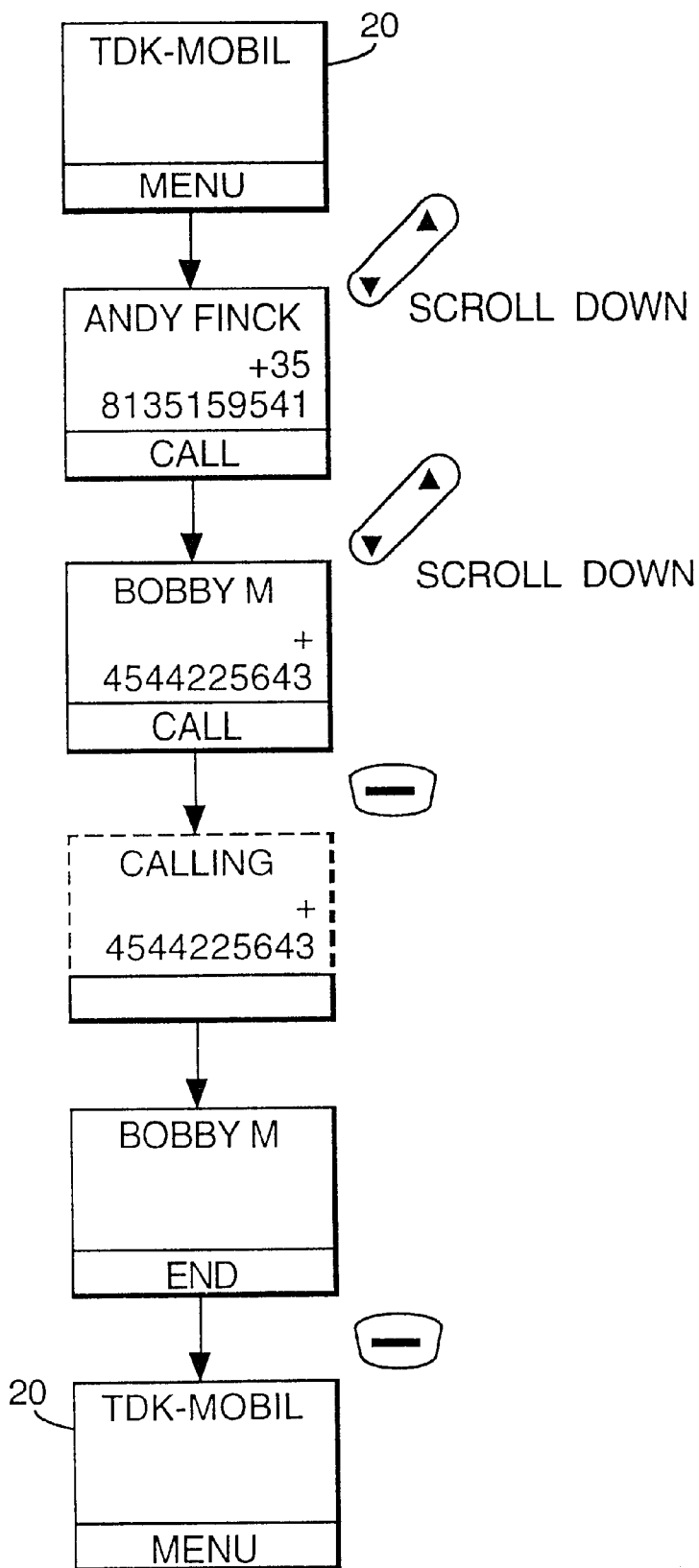


Fig.5.



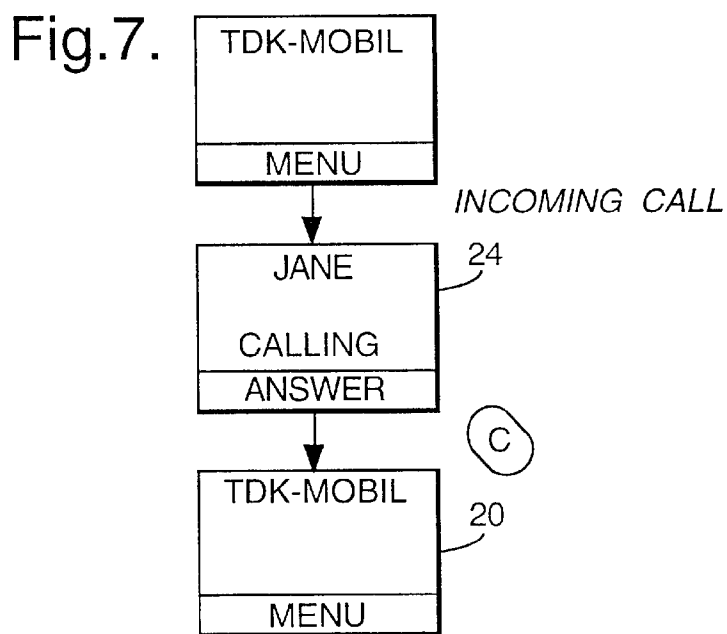
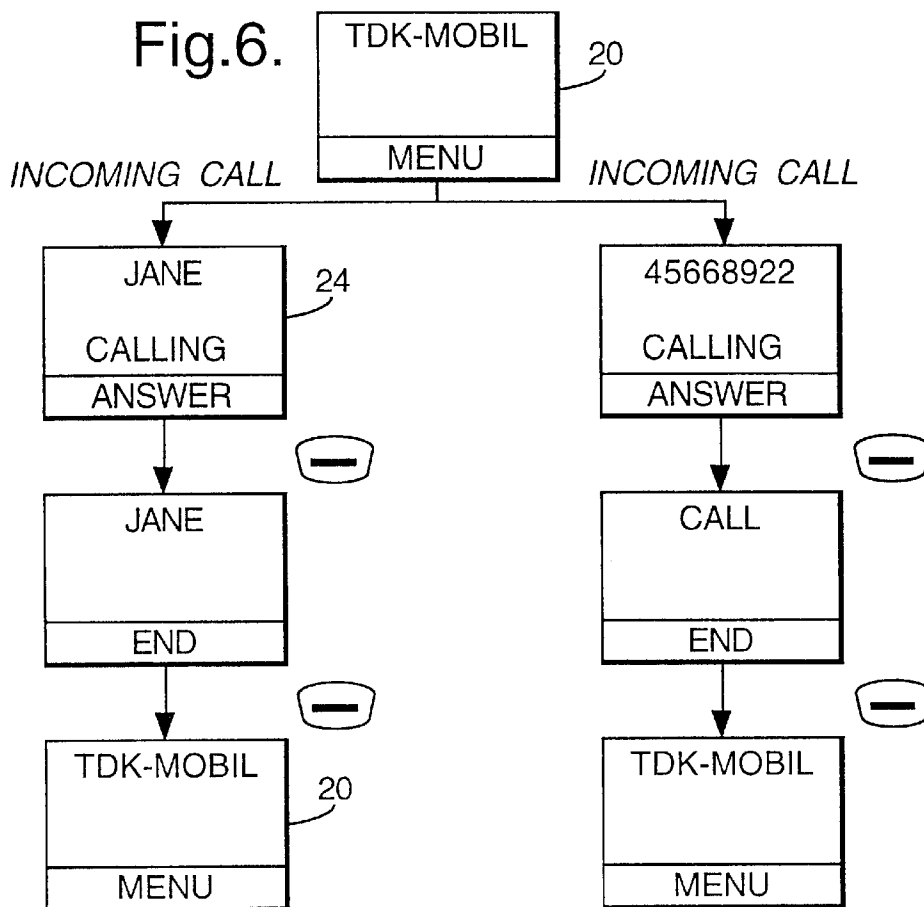


Fig.8.

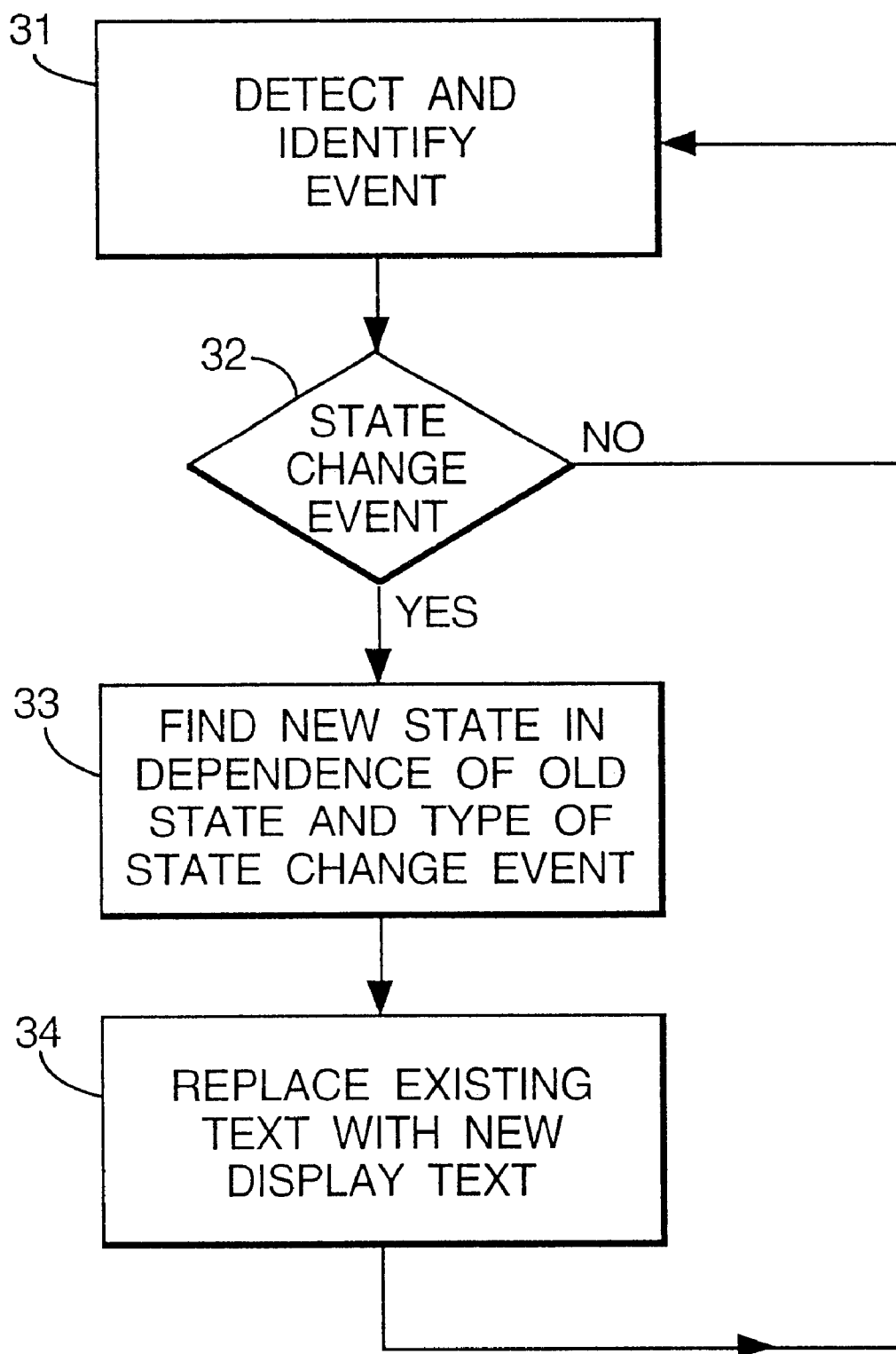
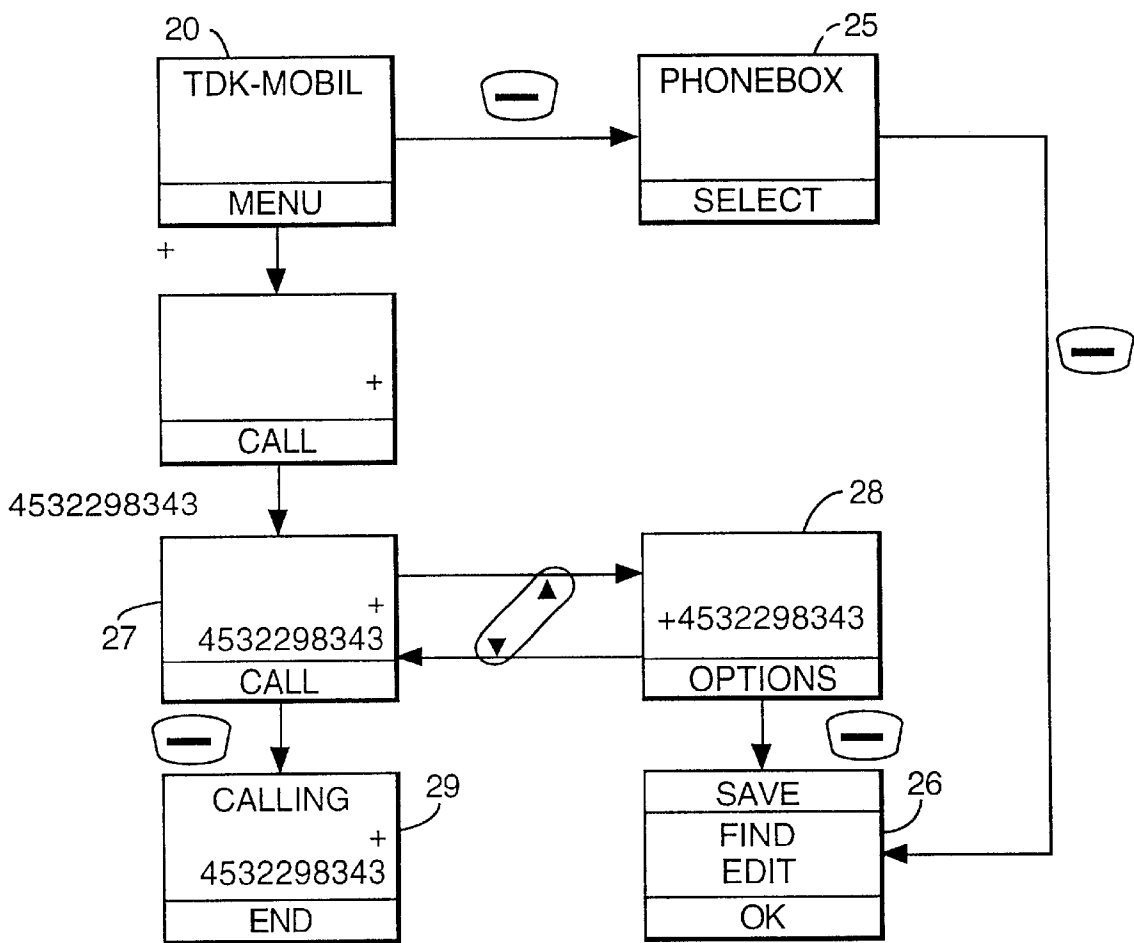




Fig.9.



## USER INTERFACE FOR A RADIO TELEPHONE

### BACKGROUND OF THE INVENTION

The invention concerns a radiophone having a user interface comprising a display and a keypad including at least one operation key whose function is controlled by a controller unit and is displayed in a predetermined area of said display.

The term "radiophone" covers a portable or mobile unit which, with a transmitter/receiver, is capable of transmitting signals with speech or data via electromagnetic waves/radio waves to another unit comprising a transmitter/receiver.

It is required by the users that the size of radiophones, e.g. in the form of portable telephones, be minimized, since this will make them easier to carry and to handle. This necessarily means that the area on the front of the telephone will be reduced, and since it is the front which forms the basis for the major part of the Man-Machine-Interface (MMI), this will be reduced correspondingly. The user interface comprises a keypad for entering instructions, a display for displaying information, and a microphone as well as an earpiece for picking up and emitting sound signals.

The last five to ten years have seen a tremendous development in such telephones, where more and more features have become accessible in the telephones—without a corresponding change in the interface. The extent to which these features is used, varies much from user to user.

### SUMMARY OF THE INVENTION

In accordance with the present invention there is provided a radiophone comprising a user interface and a control unit connected to the user interface, said user interface comprising a display and a keypad having at least one operation key whose function is controlled by the controller unit and is displayed in a predetermined part of said display, said radiophone being capable of assuming a plurality of states in which a group of predetermined actions associated with the state concerned may be performed by means of said at least one operation key, said controller unit displaying an action from said group of actions as a default function. The operation key or the soft key is hereby presented as default to perform an active action e.g. with the data which have been fetched from the memory of the telephone or have been input to the main area of the display. As default, this active action may be to make a call, while alternative functions may then be to save a telephone number in the phonebook, to edit it, to erase it, etc.

The invention provides a user interface for a radiophone which facilitates the normal operation, without this being at the expense of the amount of features.

Further, the radiophone may advantageously be provided with a scroll key by means of which the user may selectively jump to the preceding or succeeding item at the location concerned in the menu loop. In a preferred embodiment of the invention, the controller unit also redefines the function of the scroll key from scrolling between several items in a menu to switching from the default function to the group of functions to which the default function belongs. It is noted that, in the preferred embodiment, the scroll key toggles between the default function and the group of functions (options), but switches between items in the function group once this has been selected by means of the operation key. The default function is included here at the same level as the other functions in the group.

So far, the possible functions have been treated in a co-ordinated manner to a great extent, but the provision of a default option, which covers the major part of the activities which the user normally performs, will make it easier for the users to perform standard actions, without making the special actions more difficult to perform, since these are achieved via the group of possible functions. This ensures that when data are input to the main area of the display, an action may be performed on these data merely by a single manipulation of the operation key, which is a multi-function key. In the past, this was feasible only through the use of mono-function keys, such as "on-hook" and "off-hook".

This means e.g. that the operation key, which is frequently referred to as a soft key since its function is not fixed, but may vary according to the state concerned, enables a call to be established by a single depression of the operation key when a telephone number is present in the display.

In addition to redefining the functions of the operation key and the scroll key in the preferred embodiment, the controller unit may also advantageously redefine the function of the erase key, so that the erase key, during a telephone call and when detecting an incoming call, changes its function from erasing entered characters to interrupting the ongoing call or to rejecting the incoming call or to diverting it to a voice mail box.

If the user decides to make a call by means of the operation key, the phone changes its state to a "call established" state when the call has been established, and then the new default function of the operation key will be to terminate the call. This means that another activation of the operation key will terminate the call. If a conference call is to be established, this is done by means of the scroll key via the group of possible functions associated with the state concerned.

It should be noted that said at least one operation key may comprise two or more keys whose default function changes when the state changes. Further, nothing prevents said at least one operation key from being integrated with said predetermined area(s) of the display as keys in a touch-sensitive display.

### BRIEF DESCRIPTION OF THE DRAWINGS

The invention will be explained more fully below in connection with a preferred embodiment and with reference to the drawing, in which:

FIG. 1 shows a preferred embodiment of a portable telephone having a user interface in accordance with the invention;

FIG. 2 shows switching between the states of the telephone;

FIG. 3 schematically shows the hardware parts of a portable telephone which are essential to the understanding of the invention;

FIG. 4 shows a sequence of display images in connection with call establishment;

FIG. 5 shows another sequence of display images in connection with call establishment;

FIG. 6 shows a sequence of display images in connection with call answer;

FIG. 7 shows a sequence of display images in connection with call rejection;

FIG. 8 shows a flow diagram illustrating the decision processes in the controller unit in a telephone in accordance with the invention; and

FIG. 9 shows a sequence of display images in connection with call establishment and access to the phonebook.

3

DETAILED DESCRIPTION OF THE  
INVENTION

FIG. 1 shows a preferred embodiment of a radiophone according to the invention, and it will be seen that the telephone, which is generally designed by 1, comprises a user interface having a keypad 2, a display 3, an on/off button 4, an earpiece 5, and a microphone 6. The keypad 2 has a first group 7 of keys in the form of alpha-numerical keys, by means of which the user can enter a telephone number, write a text message (SMS), write a name (associated with the telephone number), etc. The user uses the first group of keys primarily for entering data in the telephone (entry events).

The keypad 2 additionally comprises a second group of keys which, in the preferred embodiment, comprises precisely one operation key 8 or soft key whose function depends on the present state of the telephone. The default function or the present function of the operation key 8 is displayed in a predetermined area 21 of the display 3. In the preferred embodiment, the second group of keys additionally comprises a scroll key 9 by means of which the user can jump selectively from one item to the preceding or the succeeding item in the menu loop of the telephone, while he gets access to a submenu loop under the item concerned in the main menu loop by activation of the operation key. The clear key 10 may be used e.g. for erasing the digit or letter entered last by brief depression, while depression of a longer duration will erase the entire number or word. Like the operation key 8, the scroll key 9 and the clear key 10 may advantageously be redefined in some states, which appears from the following.

FIG. 3 schematically shows the most important parts of a preferred embodiment of a portable telephone, said parts being essential to the understanding of the invention. The preferred embodiment of the telephone of the invention is adapted for use in connection with the GSM network, but, of course, the invention may also be applied in connection with other telephone networks, such as cellular networks and various forms of cordless telephone systems. The microphone 6 records the user's speech, and the analog signals formed thereby are A/D converted in an A/D converter 7 before the speech is encoded in an audio codec unit 9. The encoded speech signal is transferred to a physical layer processor 10, which i.e. supports the GSM terminal software. The processor 10 also forms the interface to the peripheral units 15 of the apparatus, including the display 3 and the keypad 2 (as well as SIM, data, power supply, RAM, ROM, etc.). The processor 10 communicates with the RF part 14 via a baseband converter 12 and a channel equalizer 13. The audio codec unit 9 speech-decodes the signal, which is transferred from the processor 10 to the earpiece 5 via a D/A converter 8. The units 7-13 are usually integrated in a chip set, an example of such a commercially available chip set being AD20msp410 GSM from Analog Devices with associated protocol software from The Technology Partnership (TTP).

The processor 10, which serves as the controller unit in a manner known per se in the preferred embodiment, is connected to the user interface. Thus, it is the processor which monitors the activity in the telephone and controls the display 3, 21 in response thereto. Therefore, it is the processor 10 which detects the occurrence of a state change event and changes the state of the telephone and thus the display text. A state change event may be caused by the user when he activates the keypad, which is called an entry event, and also by the network connection of the telephone or by

4

another event beyond the user's control, which is called a non user event. Non user events comprise status change during call set-up, change in battery voltage, change in antenna conditions, message on reception of SMS, etc.

The invention is based on the idea that the telephone can assume a plurality of predetermined states 40.1-40.n, which is illustrated in FIG. 2. A plurality of actions (options 41.1-41.n) may be performed in these states 40.1-40.n. The display image at arrival to state 40.1 may be a telephone number or the name of a person contained in the phonebook of the telephone, which is indicated by "state". "State" might also cover "incoming calls", "E-mail received", "SMS received", etc. If the display contains a telephone number, the default function 42.1-42.n might be "call". The scroll key 8 allows switching from the default function to the group of possible functions, to which the default function belongs. It is noted that, in the preferred embodiment, the scroll key 8 toggles between the default function and the group of possible functions (options), but switches between items in the group of possible functions, once this group has been selected by means of the operation key. The state is maintained during toggling and scrolling through the options.

As will be seen from FIG. 2, a state change event will result in a change from one state to another. The new state depends on the old state and the nature of the state change event. During an established call ("call established" state), the default function of the operation key 8 will according to the preferred embodiment be "end". If a new incoming call "is waiting", the user may use the scroll key 9 to produce the option list including items such as "end", "join", "answer" and "swap" without interrupting the call.

Each state 40.1-40.n is associated with a predefined group of functions, actions or options 41.1-41.n, which are possible precisely for that state. Establishment of conference calls, e.g., can be performed only when a call has already been established. A preferred function serving as the default function 42.1-42.n is designated in each of these groups. This designation may be performed by the programmer during programming, by the user through his redefinition of the default function, or by the telephone itself in that it records the frequency of the use of the individual functions and appoints the most frequently used one in each group as the default function—optionally with the user's acceptance.

When the telephone changes its state, the operation key can perform the default function if it is activated, and the user may toggle between the default function and the whole group of options by means of the scroll key. If the group of options is selected with the operation key, the user will be able to scroll through the group of options with the scroll key and to select the desired (designated) function with the operation key.

When a function is selected with the operation key, the processor 10 runs the associated program sequence to execute the function.

FIG. 4 shows the display text with simultaneous indication of the keys of the keypad which have been activated. The display 3 has a display image 20 ("idle mode" state) which shows the function of the soft key 8 as a highlighted bar in a predetermined area (soft key display) 21 of the display. The function of the soft key 8 in the idle mode is access to the main menu loop of the telephone. The upper part of the display 20 shows an identification of the network operator concerned (here TDK-MOBIL). The display may additionally contain an indicator of the antenna signal strength and a battery voltage indicator. These are not shown

5

in the figures, as they have no importance to the description of the default function.

When the user enters the FIG. 1 by means of the alpha-numerical keys 7, the processor 10 records this, and the telephone then changes to a "number handling state". The default function is call establishment here, and "call" is therefore displayed in the soft key display 21. When the telephone changes from the idle mode, the operator identification disappears, while the entered digit is displayed in the main area 23 of the display image 21.

When several digits are entered, these are displayed as they are entered after the digit entered first. When the soft key 8 is activated, it is attempted to establish a call, which causes the telephone to change to a "call established state" under the control of the processor 10, and the new function "end" of the operation key 8 is now displayed in the soft key display 21. It is shown at the same time in the display that it is attempted to establish a call, which is done by the indication "calling . . .". The number to which the connection is to be established is still displayed in the main area 23 of the display.

When the call has been established, this is shown by the indication "connected" at the top of the display and by an indication of the telephone by means of which the call has been established. As will be seen from the branch, this identification may be the telephone number in the field 23 or a name code 23a, if the processor recognizes the number in its associated phonebook. The default function of the soft key 8 will still be "end", which is shown in the soft key display 21. If the soft key 8 is activated once more, the call will be interrupted, and the telephone will return to the "idle mode state" with the idle mode display image 20.

FIG. 5 shows a corresponding scenario; here, the user decides to use the scroll key 9 from the idle mode display image 20 to gain access to the phonebook of the telephone under the main menu loop, which causes the telephone number and the name code of the first storage location in the phonebook to be displayed in the display. The telephone changes to the "number handling state", and the new default function "call" of the operation key 8 is now displayed in the soft key display 21. By continued use of the scroll key 9 the user will be able to scroll through the phonebook until he finds the number he wants. As the operation key 8 maintains its "call" function as the default function, the call can still be established by depression of the operation key 8. Then, the call can be established and terminated, as explained in connection with FIG. 4.

FIG. 6 shows how an incoming call is displayed. When the telephone records an incoming call, the processor 10 detects this as a non user event, and the telephone changes from the "idle mode state" to an "incoming call state", so that the display image 20 is replaced by a new display image 24. The calling telephone is identified by telephone number (right branch) or name code (left branch), if it is recognised from the phonebook of the telephone. In some cases the calling telephone cannot be identified, and the identification field will therefore be empty (not shown). The operation key 8 will simultaneously assume a new default function under the control of the processor 10, and the new default function will answer the call ("answer") in the preferred embodiment. When the call has been established, the telephone changes to the "call established state", and the display displays the name code of the calling telephone or merely indicates that a call takes place if the name code is not recognized. In this state, the default function of the operation key 8 is "end", and it continues to be displayed in the soft key display 21.

6

If the operation key 8 is activated, the call will be interrupted, and the telephone will return to the "idle mode state" with the idle mode display image 20.

FIG. 7 correspondingly shows how the display image 20, 24 changes when an incoming call is detected and the telephone changes to the "incoming call state" with the default function "answer". If the user does not want to answer the call, he can reject the call by depressing the c key or divert the call to his voice mail, if he has such a feature. The telephone then returns to the "idle mode state" with the idle mode display image 20.

FIG. 9 shows how it is possible to change from the "idle mode state" with the display image 20 (idle mode display) to a main menu by activating the operation key 8. Here, access to the phonebook is presented as default. If the user selects this, he may choose between the individual submenu items in the phonebook via the display image 26. If, in the "idle mode state", the user had instead begun to enter a telephone number, the telephone would have changed to a "number handling state" with a display image 27 with "call" as the default function. The user may switch to possible functions in this state (display image 28) by means of the scroll key 9, and these functions comprise the submenu items (display image 26) of the phonebook. If, instead, the user had selected the default function in the "number handling state", the telephone would have started establishment of a call (display image 29).

When the telephone is in idle mode, it communicates with a fixed station at regular intervals via paging messages to maintain the connection, and it monitors its peripheral units in the form of battery, keypad, etc. It is the microprocessor 10 which controls these activities, and when it detects an event, it checks whether the telephone is to change its state, e.g. from the "idle mode state" to the "incoming call state". FIG. 8 illustrates this process, where the processor in stage 31 monitors and detects occurring events. If a detected event is not a state change event, the processor returns to the search stage and searches for a new event. If the processor identifies the event as a state change event in the decision stage 32, the processor identifies the new state in stage 33, which takes place by means of a state tree, and replaces the old display text by a new default function indication of the new text, which takes place in stage 34.

Although it is shown in the preferred embodiment that the functions of the telephone might very well be controlled by a single operation key, it may be found expedient in some cases to use two or more operation keys in the second group of keys, optionally integrated in a touch-sensitive display.

In view of the foregoing description it will be evident to a person skilled in the art that various modifications may be made within the scope of the invention.

The scope of the present disclosure includes any novel feature or combination of features disclosed therein either explicitly or implicitly or any generalisation thereof irrespective of whether or not it relates to the claimed invention or mitigates any or all of the problems addressed by the present invention. The applicant hereby gives notice that new claims may be formulated to such features during prosecution of this application or of any such further application derived therefrom.

What is claimed is:

1. A radiotelephone having a controller unit controlling a user interface, said user interface comprising:
  - a display;
  - one operation key whose function is controlled by the controller unit;

7

said display having an area solely dedicated for displaying the present function performed when pressing said one operation key;  
said radiophone being capable of assuming a plurality of states;  
groups of predetermined actions that are adapted to be performed by pressing said operation key being defined by the controller unit in said plurality of states;  
said controller unit dedicating an action from said group of actions as a default function for the operation key in dependence on the state assumed by the radio telephone;  
a scroll key allowing the user to scroll between actions included in said group of actions available for said operation key;  
whereby the action presently dedicated to the operation key and being displayed in said dedicated area in the display is changed.  
2. A radiophone having a controller unit controlling a user interface, said user interface comprising:  
a display;  
a single operation key whose function is controlled by the controller unit providing access to a menu loop as well as to a phonenummer database included in said radiophone;  
said display having an area solely dedicated for displaying the present function performed when pressing said single operation key;  
said radiophone being capable of assuming a plurality of states;  
groups of predetermined actions that are adapted to be performed by pressing said operation key being defined by said controller unit in said plurality of states;  
said controller unit dedicating an action from said group of actions as a default function for the operation key in dependence on the state assumed by said radio telephone;  
a scroll key allowing the user to scroll between actions included in said group of actions available for said operation key;

8

whereby the action presently dedicated to said operation key and being displayed in said dedicated area in said display is changed.  
3. A radiophone according to claim 2, wherein said default function for said single operation key in idle mode provides access to said menu loop.  
4. A radiophone having a controller unit controlling a user interface, said user interface comprising:  
a display;  
a single operation key whose function is controlled by said controller unit and provides access to establishing and terminating calls;  
said display having an area solely dedicated for displaying the present function performed when pressing said one operation key;  
said radiophone being capable of assuming a plurality of states;  
groups of predetermined actions that are adapted to be performed by pressing said operation key being defined by said controller unit in said plurality of states;  
said controller unit dedicating an action from said group of actions as a default function for said operation key in dependence on the state assumed by said radio telephone;  
a scroll key allowing the user to scroll between actions includes in said group of actions available for said operation key;  
whereby the action presently-dedicated to said operation key and being displayed in said dedicated area in said display is changed.  
5. A radiophone according to claim 4, wherein said default function for said single operation key is in idle mode when said user has entered a number by means of alphanumeric keys is to establish a call.  
6. A radiophone according to claim 4, wherein said default function is for said single operation key.  
7. A radiophone according to claim 5, wherein said default function is for said single operation key.  
8. A radiophone according to claim 4, wherein said default function is for said single operation key when an incoming call has been detected and is answering the call.

\* \* \* \* \*