



PHYSICIANS'

DESK

REFERENCE®

www.PDR.net
Web | PDA | Print

Dr. Reddy's Laboratories, Ltd., et al.
v.
Galderma Laboratories, Inc.
IPR2015-_____
Exhibit 1043



Partnership for
Prescription Assistance

NATIONAL PARTNER ORGANIZATIONS

Action CF	Men's Health Network
African Methodist Episcopal (AME) Church	NAACP
Alliance for Aging Research	National Alliance for Hispanic Health
Alliance of Minority Medical Associations	National Alliance for the Mentally Ill
American Academy of Family Physicians	National Asian Pacific Center on Aging
American Academy of Nurse Practitioners	National Association of Chain Drug Stores
American Academy of Physician Assistants	National Association of Neighborhoods
American Autoimmune Related Diseases Association, Inc.	National Association of Psychiatric Health Systems
American Association of Clinical Endocrinologists	National Coalition for Homeless Veterans
American Cancer Society	National Coalition for Women with Heart Disease
American College of Emergency Physicians	National Council for Community Behavioral Health Care
American College of Nurse Practitioners	National Family Caregivers Association
American College of Obstetricians and Gynecologists	National Health Council
American College of Osteopathic Emergency Physicians	National Hispanic Council on Aging
American College of Osteopathic Family Physicians	National Hispanic Medical Association
American College of Rheumatology	National Kidney Foundation
American College of Osteopathic Internists	National Latina Health Network
American Lung Association	National Medical Association
American Osteopathic Academy of Orthopedics	National Mental Health Association
American Osteopathic Association	National Minority Health Month Foundation
American Pain Foundation	National Perinatal Association
American Psychiatric Association	National Puerto Rican Coalition
Asthma & Allergy Foundation of America	National Rural Health Association
Association of Black Cardiologists, Inc.	National Urban League
Black Women's Health Imperative	National Women's Health Resource Center
Community Health Charities	Ovarian Cancer National Alliance
COSHAR Foundation Inc.	Pharmaceutical Research and Manufacturers of America
Cuban American National Council	Retire Safe
Dia de la Mujer	Sjögren's Syndrome Foundation
Easter Seals	Society for Women's Health Research
Emergency Nurses Association	Spina Bifida Association of America
Epilepsy Foundation of America	TII CANN, AIDS National Network
Foundation for Allergy & Immunology Research	The AIDS Institute
Hoosier Veterans Assistance Foundation	The National Grange
Interamerican College of Physicians and Surgeons	United Way of America
League of United Latin American Citizens (LULAC)	Women Impacting Public Policy
Lupus Foundation of America, Inc.	Y-ME National Breast Cancer Organization
Lymphoma Research Foundation	
MANA - A National Latina Organization	

RECEIVED

NOV 27 2006

LULK&M

LULK&M
LIBRARY
600 SOUTH AVE. WEST
WESTFIELD, NJ 07090

1-888-4PPA-NOW | www.pparx.org



PHYSICIANS' DESK REFERENCE®

Executive Vice President, PDR: Kevin D. Sanborn
Senior Vice President, PDR Sales: Roseanne McCauley
Vice President, Marketing: William T. Hicks
Vice President, Regulatory Affairs: Mukesh Mehta, RPh
Vice President, PDR Services: Brian Holland
Senior Director, Pharmaceutical Solutions Sales: Anthony Sorce
PDR Sales Managers: Frank Karkowsky, Elaine Musco, Marion Reid, RPh
National Solutions Manager: Richard Zwickel
Senior Solutions Managers: Debra Goldman, Warner Stuart, Suzanne E. Yarrow, RN
Solutions Managers: Joseph Gross, Marjorie A. Jaxel, Lois Smith, Krista Turpin
Sales Coordinators: Dawn McPartland, Janet Wallendal

Director of Trade Sales: Bill Gaffney
Senior Manager, Direct Marketing: Amy Cheong

Senior Director of Product Management, Electronic Solutions: Valerie E. Berger
Director of Product Management, Monographs: Jeffrey D. Schaefer
Senior Marketing Manager: Kim Marich

Senior Director, Client Services: Stephanie Struble
Director of Operations: Robert Klein
Director of Finance: Mark S. Ritchin

Director, Editorial Services: Bette LaGow
Manager, Professional Services: Michael DeLuca, PharmD, MBA
Drug Information Specialists: Majid Kerolous, PharmD; Nermin Shenouda, PharmD; Greg Tallis, RPh
Project Editor: Lori Murray
Manager, Client Services: Travis Northern
Customer Service Supervisor: Todd Taccetta

Manager, Production Purchasing: Thomas Westburgh
PDR Production Manager: Steven Maher
PDR Index Supervisor: Shannon R. Spare
Index Editor: Allison O'Hare
Senior Production Coordinators: Gianna Caradonna, Yasmin Hernández
Production Coordinator: Nick W. Clark
Traffic Assistant: Kim Condon

Production Design Supervisor: Adeline Rich
Senior Electronic Publishing Designer: Livio Udina
Electronic Publishing Designers: Deana DiVizio, Carrie Faeth, Monika Popowitz
Production Associate: Joan K. Akerlind
Digital Imaging Manager: Christopher Husted
Digital Imaging Coordinator: Michael Labruyere



Copyright © 2007 and published by Thomson PDR at Montvale, NJ 07645-1725. All rights reserved. None of the content of this publication may be reproduced, stored in a retrieval system, resold, redistributed, or transmitted in any form or by any means (electronic, mechanical, photocopying, recording, or otherwise) without the prior written permission of the publisher. Physicians' Desk Reference®, PDR®, Pocket PDR®, PDR Family Guide to Prescription Drugs®, PDR Family Guide to Women's Health and Prescription Drugs®, and PDR Family Guide to Nutrition and Health® are registered trademarks used herein under license. PDR® for Ophthalmic Medicines; PDR® for Nonprescription Drugs, Dietary Supplements, and Herbs; PDR® Guide to Drug Interactions, Side Effects, and Indications; PDR® Pharmacopoeia; PDR® for Herbal Medicines; PDR® for Nutritional Supplements; PDR® Medical Dictionary; PDR® Nurse's Drug Handbook™; PDR® Nurse's Dictionary; PDR® Family Guide Encyclopedia of Medical Care; PDR® Family Guide to Natural Medicines and Healing Therapies; PDR® Family Guide to Common Ailments; PDR® Family Guide to Over-the-Counter Drugs; PDR® Family Guide to Nutritional Supplements; and PDR® Electronic Library are trademarks used herein under license.

Officers of Thomson Healthcare, Inc.: President and Chief Executive Officer: Bob Cullen; Chief Financial Officer: Paul Hilger; Chief Medical Officer: Rich Klasco, MD, FACEP; Executive Vice President, Medstat: Carol Diephuis; Executive Vice President, Micromedex: Jeff Reihl; Executive Vice President, PDR: Kevin D. Sanborn; Senior Vice President, Technology: Michael Karaman; Vice President, Finance: Joseph Scarfone; Vice President, Human Resources: Pamela M. Bilash; Vice President, Planning and Business Development: Ray Zoeller; Vice President, Product Strategy: Anita Brown; Vice President, Strategic Initiatives: Timothy Murray

ISBN: 1-56363-568-2

Cetacaine—Cont.

der dentures or cotton rolls, as retention of the active ingredients under a denture or cotton roll could possibly cause an escharotic effect. Routine precaution for the use of any topical anesthetic should be observed when using Cetacaine.

Jetco® Cannula for Cetacaine Spray

- The supplied 4" stainless steel Jetco® cannula (J-4) for Cetacaine Spray is especially designed for accessibility and application of Cetacaine, at the required site of pain control.
- The Jetco cannula is also available in 6", (J-6) and 8" curved configuration, (J-8).
- Replacement Jetco cannulas are available.
- The Jetco cannula is inserted firmly into the protruding plastic stem on each bottle of Cetacaine Spray.
- The Jetco cannula may be removed and reinserted as many times as required for cleansing or sterilization, and is autoclavable.

PACKAGING AVAILABLE

Cetacaine Spray 56 g. including propellant.*
Cetacaine Liquid 56 g.
Cetacaine Hospital Gel 29 g. Tube.

*WARNING

Contains CFC-114 and CFC-11, substances which harm public health and environment by destroying ozone in the upper atmosphere.

Rx Only.

CETYLITE

INDUSTRIES, INC.

9051 River Road

Pennsauken, NJ 08110-3293

1-800-257-7740

www.cetylite.com

Made in U.S.A.

Rev. 9/03.1

Shown in Product Identification Guide, page 309.

COLD-fx Pharmaceuticals (USA) Inc.

5600 NORTH RIVER ROAD, SUITE 800
CHICAGO, IL, USA, 60018

Direct Inquiries to:
1-877-490-3300

COLD-fx™

Strengthens the Immune System*

OTC

Supplement Facts

Serving Size 1 Capsule

Amount Per Serving

% Daily Value

CVT-E002 is a proprietary and patented natural extract containing poly-furanosyl-pyranosyl-saccharides derived from *Panax quinquefolius* (North American Ginseng, root) 200 mg**

** Daily Value not established

Other ingredients: Gelatin

DIRECTIONS

Recommended for Short-Term Use

Day 1, take 3 capsules 3 times during the day (total = 9 capsules)

Day 2, take 2 capsules 3 times during the day (total = 6 capsules)

Day 3, take 1 capsule 3 times during the day (total = 3 capsules)

Recommended for Long-Term Use

Take 1 capsule 2 times each day

Recommended use for adults and children ages 12 years and older.

WARNINGS

Individuals with serious health conditions or taking medications, or pregnant or lactating women, should consult a health care professional before taking COLD-fx™ extract. As COLD-fx extract is a derivative of North American ginseng, it is not recommended for individuals with allergies to ginseng. Do not exceed the recommended daily dose.

OTHER INFORMATION

Each capsule is a ChemBioPrint™ product, made with a patented technology that is used to identify the active components of CVT-E002, a proprietary and patented natural extract, to prove the health benefit of CVT-E002, and to ensure that the product is consistently made from batch to batch.

For more information on COLD-fx, visit www.cold-fx.com

HOW SUPPLIED

Available in bottles of 30, 60 and 150 capsules as well as an 18 capsule blister package.

*This statement has not been evaluated by the Food and Drug Administration. This product is not intended to diagnose, treat, cure or prevent any disease.

The product name refers to the traditional cooling energy of the source material. This product is not intended to treat, cure or prevent upper respiratory infections due to cold or influenza-like viruses.

Distributed by: COLD-fx Pharmaceuticals (USA) Inc.

5600 N. River Road, Suite 800, Chicago, IL, USA 60018

1-877-490-3300 · cold-fx.com

TM-owned by fx Life Sciences International GmbH and used under license.

US Patents #6,432,454, #6,156,291

REFERENCES

1. Goel DP, et al. Doping-control urinalysis of a ginseng extract, Cold-fx, in athletes. *Int J Sport Nutr Exerc Metab* 2004, 14(4): 473-480.
2. McElhaney JE, et al. Efficacy of COLD-fx in the prevention of respiratory symptoms in community-dwelling adults: a randomized, double-blind, placebo-controlled trial. *Journal of Alternative and Complementary Medicine* 2006, 12(2): 153-157.
3. McElhaney JE, et al. A placebo-controlled trial of a proprietary extract of North American ginseng (CVT-E002) to prevent acute respiratory illness in institutionalized older adults. *Journal of American Geriatrics Society* 2004, 52: 13-19.
4. McElhaney JE, et al. COLD-fx stimulates cell mediated immune response of peripheral leukocytes to influenza virus in National Hockey League players 2006, manuscript in preparation.
5. Predy GN et al. Efficacy of an extract of North American ginseng containing poly-furanosyl-pyranosyl-saccharides for preventing upper respiratory tract infections: a randomized controlled trial. *Canadian Medical Association Journal* 2005, 173(9): 1043-1048.
6. Predy GN et al. Immune modulating effects of daily supplementation of COLD-fx (a proprietary extract of North American ginseng) during an influenza season in healthy adults 2006, in press.
7. Wang M et al. A proprietary extract from North American ginseng (*Panax quinquefolium*) enhances IL-2 and IFN-γ productions in murine spleen cells induced by Con-A. *International Immunopharmacology* 2004; 4:311-315.
8. Wang M et al. Immunomodulating activity of CVT-E002, a proprietary extract from North American ginseng (*Panax quinquefolium*). *Journal of Pharmacy and Pharmacology* 2001, 53: 1515-1523.
9. Ueng Y and C Chen. Effects of CVT-E002, a proprietary extract from North American ginseng (*Panax quinquefolium*) on drug metabolizing enzymes. *Journal of Chinese Medicine* 2002, 13(2): 89-96.
10. Yang JC et al. Effects of American ginseng extract (*Panax quinquefolius*) on formalin-induced nociception in mice. *American Journal of Chinese Medicine* 2001, 29(1): 149-154.

Shown in Product Identification Guide, page 309

CollaGenex Pharmaceuticals, Inc.

41 UNIVERSITY DRIVE, SUITE 200
NEWTOWN, PA 18940

Direct inquiries to:
888-339-5678

ORACEA™

[or-RAY-sha]

(doxycycline, USP)

Capsules 40 mg*

*30 mg Immediate Release & 10 mg Delayed Release beads

Rx Only

KEEP OUT OF REACH OF CHILDREN

The dosage of ORACEA differs from that of doxycycline used to treat infections. To reduce the development of resistant bacteria as well as to maintain the effectiveness of other antibacterial drugs, ORACEA should be used only as indicated.

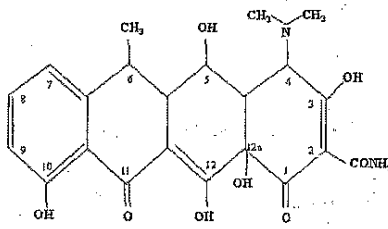
ORACEA is indicated for the treatment of only inflammatory lesions (papules and pustules) of rosacea in adult patients.

This formulation of doxycycline has not been evaluated as an antibacterial in the treatment of infections.

DESCRIPTION

ORACEA (doxycycline, USP) capsules 40 mg are hard gelatin capsule shells filled with two types of doxycycline beads (30 mg immediate release and 10 mg delayed-release) that together provide a dose of 40 mg of anhydrous doxycycline (C₂₂H₂₄N₂O₈).

The structural formula of doxycycline, USP is:



with an empirical formula of C₂₂H₂₄N₂O₈•H₂O and a molecular weight of 462.46. The chemical designation for doxycycline is 2-Naphthacenecarboxamide, 4-(dimethylamino)-1,4,4a,5,5a,6,11, 12a-octahydro-3,5,10,12,12a-pentahydroxy-6-methyl-1,11-dioxo-, [4S-(4aa, 4aa, 5aa, 5aa, 6a,12aa)]-, monohydrate. It is very slightly soluble in water.

Inert ingredients in the formulation are: hypromellose, iron oxide red, iron oxide yellow, methacrylic acid copolymer, polyethylene glycol, Polysorbate 80, sugar spheres, talc, titanium dioxide, and triethyl citrate. Active ingredients: Each capsule contains doxycycline, USP in an amount equivalent to 40 mg of anhydrous doxycycline.

CLINICAL PHARMACOLOGY

Pharmacokinetics

ORACEA capsules are not bioequivalent to other doxycycline products. The pharmacokinetics of doxycycline following oral administration of ORACEA was investigated in 2 volunteer studies involving 61 adults. Pharmacokinetic parameters for ORACEA following single oral doses and at steady-state in healthy subjects are presented in Table 1.

[See table 1 at top of next page]

Absorption: In a single-dose food-effect study involving administration of ORACEA to healthy volunteers, concomitant administration with a 1000 calorie, high-fat, high-protein meal that included dairy products, resulted in a decrease in the rate and extent of absorption (C_{max} and AUC) by about 45% and 22%, respectively, compared to dosing under fasted conditions. This decrease in systemic exposure can be clinically significant, and therefore if ORACEA is taken close to meal times, it is recommended that it be taken at least one hour prior to or two hours after meals.

Distribution: Doxycycline is greater than 90% bound to plasma proteins.

Metabolism: Major metabolites of doxycycline have not been identified. However, enzyme inducers such as barbiturates, carbamazepine, and phenytoin decrease the half-life of doxycycline.

Excretion: Doxycycline is excreted in the urine and feces as unchanged drug. It is reported that between 29% and 55.4% of an administered dose can be accounted for in the urine by 72 hours. Terminal half-life averaged 21.2 hours in subjects receiving a single dose of ORACEA.

Special Populations

Geriatric: Doxycycline pharmacokinetics have not been evaluated in geriatric patients.

Pediatric: Doxycycline pharmacokinetics have not been evaluated in pediatric patients (See WARNINGS section).

Gender: The pharmacokinetics of ORACEA were compared in 16 male and 14 female subjects under fed and fasted conditions. While female subjects had a higher C_{max} and AUC than male subjects, these differences were thought to be due to differences in body weight/lean body mass.

Race: Differences in doxycycline pharmacokinetics among racial groups have not been evaluated.

Renal Insufficiency: Studies have shown no significant difference in serum half-life of doxycycline in patients with normal and severely impaired renal function. Hemodialysis does not alter the serum half-life of doxycycline.

Hepatic Insufficiency: Doxycycline pharmacokinetics have not been evaluated in patients with hepatic insufficiency.

Gastric Insufficiency: In a study in healthy volunteers (N = 24) the bioavailability of doxycycline is reported to be reduced at high pH. This reduced bioavailability may be clinically significant in patients with gastrectomy, gastric bypass surgery or who are otherwise deemed achlorhydric. Drug Interactions: (See PRECAUTIONS section).

MICROBIOLOGY

Doxycycline is a member of the tetracycline class of antibacterial drugs. The plasma concentrations of doxycycline achieved with ORACEA during administration (see CLINICAL PHARMACOLOGY and DOSAGE AND ADMINISTRATION) are less than the concentration required to treat bacterial diseases. *In vivo* microbiological studies utilizing a similar drug exposure for up to 18 months demonstrated no detectable long-term effects on bacterial flora of the oral cavity, skin, intestinal tract, and vagina.

ORACEA should not be used for treating bacterial infections, providing antibacterial prophylaxis, or reducing the numbers or eliminating microorganisms associated with any bacterial disease.

CLINICAL STUDIES

The safety and efficacy of ORACEA in the treatment of only inflammatory lesions (papules and pustules) of rosacea was evaluated in two randomized, placebo-controlled, multicentered, double-blind, 16-week Phase 3 studies involving 537 patients (total of 269 patients on ORACEA from the two studies) with rosacea (10 to 40 papules and pustules and two or fewer nodules). Pregnant and nursing women, patients <18 years of age, and patients with ocular rosacea and/or blepharitis/meibomianitis who require ophthalmologic treatment were excluded from study. Mean baseline lesion counts were 20 and 21 for ORACEA and placebo patient groups respectively.

At Week 16, patients in the ORACEA group were evaluated using co-primary endpoints of mean reduction in lesion counts and a dichotomized static Investigator's Global Assessment of Clear or Almost Clear (defined as 1 to 2 small

PRODUCT INFORMATION

COLLAGENEX/1001

Table 1. Pharmacokinetic Parameters [Mean (± SD)] for ORACEA

	N	C _{max} * (ng/mL)	T _{max} * (hr)	AUC _{0-∞} * (ng·hr/mL)	t _{1/2} * (hr)
Single Dose 40 mg capsules	30	510 ± 220.7	3.00 (1.0-4.1)	9227 ± 3212.8	21.2 ± 7.6
Steady-State# 40 mg capsules	31	600 ± 194.2	2.00 (1.0-4.0)	7543 ± 2443.9	23.2 ± 6.2

* Mean
+ Median
Day 7

Table 2. Clinical Results of ORACEA versus Placebo

	Study 1		Study 2	
	ORACEA 40 mg N = 127	Placebo N = 124	ORACEA 40 mg N = 142	Placebo N = 144
Mean Change in Lesion Count from Baseline	-11.8	-5.9	-9.5	-4.3
No. (%) of Subjects Clear or Almost Clear in the IGA*	39 (30.7%)	24 (19.4%)	21 (14.8%)	9 (6.3%)

* Investigator's Global Assessment

papules or pustules) when compared to the placebo group in both Phase 3 studies (See table 2 above). Patients treated with ORACEA did not demonstrate significant improvement in erythema when compared to those treated with placebo.

INDICATIONS AND USAGE

ORACEA is indicated for the treatment of only inflammatory lesions (papules and pustules) of rosacea in adult patients. No meaningful effect was demonstrated for generalized erythema (redness) of rosacea. ORACEA has not been evaluated for the treatment of the erythematous, telangiectatic, or ocular components of rosacea. Efficacy of ORACEA beyond 16 weeks and safety beyond 9 months have not been established. This formulation of doxycycline has not been evaluated in the treatment or prevention of infections. ORACEA should not be used for treating bacterial infections, providing antibacterial prophylaxis, or reducing the numbers or eliminating microorganisms associated with any bacterial disease.

To reduce the development of drug-resistant bacteria as well as to maintain the effectiveness of other antibacterial drugs, ORACEA should be used only as indicated.

CONTRAINDICATIONS

This drug is contraindicated in persons who have shown hypersensitivity to doxycycline or any of the other tetracyclines.

WARNINGS

Teratogenic effects

- 1) Doxycycline, like other tetracycline-class antibiotics, can cause fetal harm when administered to a pregnant woman. If any tetracycline is used during pregnancy or if the patient becomes pregnant while taking these drugs, the patient should be informed of the potential hazard to the fetus and treatment stopped immediately. ORACEA should not be used during pregnancy (see PRECAUTIONS: Pregnancy).
 - 2) The use of drugs of the tetracycline class during tooth development (last half of pregnancy, infancy, and childhood up to the age of 8 years) may cause permanent discoloration of the teeth (yellow-gray-brown). This adverse reaction is more common during long-term use of the drug but has been observed following repeated short-term courses. Enamel hypoplasia has also been reported. Tetracycline drugs, therefore, should not be used during tooth development unless other drugs are not likely to be effective or are contraindicated.
 - 3) All tetracyclines form a stable calcium complex in any bone-forming tissue. A decrease in fibula growth rate has been observed in premature human infants given oral tetracycline in doses of 25 mg/kg every 6 hours. This reaction was shown to be reversible when the drug was discontinued. Results of animal studies indicate that tetracyclines cross the placenta, are found in fetal tissues, and can cause retardation of skeletal development on the developing fetus. Evidence of embryotoxicity has been noted in animals treated early in pregnancy (see PRECAUTIONS: Pregnancy section).
- Gastrointestinal effects**
Pseudomembranous colitis has been reported with nearly all antibacterial agents and may range from mild to life-threatening. Therefore, it is important to consider this diagnosis in patients who present with diarrhea subsequent to the administration of antibacterial agents. Treatment with antibacterial agents alters the normal flora of the colon and may permit overgrowth of clostridia. Studies indicate that a toxin produced by Clostridium difficile is a primary cause of "antibiotic-associated colitis".

If a diagnosis of pseudomembranous colitis has been established, therapeutic measures should be initiated. Mild cases of pseudomembranous colitis usually respond to discontinuation of the drug alone. In moderate to severe cases, consideration should be given to management with fluids and electrolytes, protein supplementation, and treatment with an antibacterial drug clinically effective against Clostridium difficile colitis.

Metabolic effects

The anti-anabolic action of the tetracyclines may cause an increase in BUN. While this is not a problem in those with normal renal function, in patients with significantly impaired function, higher serum levels of tetracycline-class antibiotics may lead to azotemia, hyperphosphatemia, and acidosis. If renal impairment exists, even usual oral or parenteral doses may lead to excessive systemic accumulations of the drug and possible liver toxicity. Under such conditions, lower than usual total doses are indicated, and if therapy is prolonged, serum level determinations of the drug may be advisable.

Photosensitivity

Photosensitivity manifested by an exaggerated sunburn reaction has been observed in some individuals taking tetracyclines. Although this was not observed during the duration of the clinical studies with ORACEA, patients should minimize or avoid exposure to natural or artificial sunlight (tanning beds or UVA/B treatment) while using ORACEA. If patients need to be outdoors while using ORACEA, they should wear loose-fitting clothes that protect skin from sun exposure and discuss other sun protection measures with their physician.

PRECAUTIONS

General

Safety of ORACEA beyond 9 months has not been established. As with other antibiotic preparations, use of ORACEA may result in overgrowth of non-susceptible microorganisms, including fungi. If superinfection occurs, ORACEA should be discontinued and appropriate therapy instituted. Although not observed in clinical trials with ORACEA, the use of tetracyclines may increase the incidence of vaginal candidiasis. ORACEA should be used with caution in patients with a history of or predisposition to candidiasis overgrowth. Bacterial resistance to tetracyclines may develop in patients using ORACEA. Because of the potential for drug-resistant bacteria to develop during the use of ORACEA, it should be used only as indicated.

Autoimmune Syndromes

Tetracyclines have been associated with the development of autoimmune syndromes. Symptoms may be manifested by fever, rash, arthralgia, and malaise. In symptomatic patients, liver function tests, ANA, CBC, and other appropriate tests should be performed to evaluate the patients. Use of all tetracycline-class drugs should be discontinued immediately.

Tissue Hyperpigmentation

Tetracycline class antibiotics are known to cause hyperpigmentation. Tetracycline therapy may induce hyperpigmentation in many organs, including nails, bone, skin, eyes, thyroid, visceral tissue, oral cavity (teeth, mucosa, alveolar bone), sclerae and heart valves. Skin and oral pigmentation has been reported to occur independently of time or amount of drug administration, whereas other pigmentation has been reported to occur upon prolonged administration. Skin pigmentation includes diffuse pigmentation as well as over sites of scars or injury.

Pseudotumor cerebri

Bulging fontanels in infants and benign intracranial hypertension in adults have been reported in individuals receiving tetracyclines. These conditions disappeared when the drug was discontinued.

Information for Patients

See Patient Package Insert that accompanies this Package Insert for additional information to give patients.

1. Photosensitivity manifested by an exaggerated sunburn reaction has been observed in some individuals taking tetracyclines, including doxycycline. Patients should minimize or avoid exposure to natural or artificial sunlight (tanning beds or UVA/B treatment) while using doxycycline. If patients need to be outdoors while using doxycycline, they should wear loose-fitting clothes that protect skin from sun exposure and discuss other sun protection measures with their physician. Treatment should be discontinued at the first evidence of sunburn.
2. Concurrent use of doxycycline may render oral contraceptives less effective (See Drug Interactions).
3. Autoimmune syndromes, including drug-induced lupus-like syndrome, autoimmune hepatitis, vasculitis and serum sickness have been observed with tetracycline-class antibiotics, including doxycycline. Symptoms may be manifested by arthralgia, fever, rash and malaise. Patients who experience such symptoms should be cautioned to stop the drug immediately and seek medical help.
4. Patients should be counseled about discoloration of skin, scars, teeth or gums that can arise from doxycycline therapy.
5. Take ORACEA exactly as directed. Increasing doses beyond 40 mg every morning may increase the likelihood that bacteria will develop resistance and will not be treatable by other antibacterial drugs in the future.
6. It is recommended that ORACEA not be used by pregnant or breast feeding women. (See Carcinogenesis, Mutagenesis, Impairment of Fertility, Pregnancy and Nursing Mothers sections).
7. It is recommended that ORACEA not be used by individuals of either gender who are attempting to conceive a child (See Carcinogenesis, Mutagenesis, Impairment of Fertility, and Pregnancy sections).

Laboratory Tests

Periodic laboratory evaluations of organ systems, including hematopoietic, renal and hepatic studies should be performed. Appropriate tests for autoimmune syndromes should be performed as indicated.

Drug Interactions

1. Because tetracyclines have been shown to depress plasma prothrombin activity, patients who are on anticoagulant therapy may require downward adjustment of their anticoagulant dosage.
2. Since bacteriostatic drugs may interfere with the bactericidal action of penicillin, it is advisable to avoid giving tetracycline-class drugs in conjunction with penicillin.
3. The concurrent use of tetracycline and methoxyflurane has been reported to result in fatal renal toxicity.
4. Absorption of tetracyclines is impaired by bismuth subsalicylate, proton pump inhibitors, antacids containing aluminum, calcium or magnesium and iron-containing preparations.
5. Doxycycline may interfere with the effectiveness of low dose oral contraceptives. To avoid contraceptive failure, females are advised to use a second form of contraceptive during treatment with doxycycline.
6. There have been reports of pseudotumor cerebri (benign intracranial hypertension) associated with the concomitant use of isotretinoin and tetracyclines. Since both oral retinoids, including isotretinoin and acitretin, and the tetracyclines, primarily minocycline, can cause increased intracranial pressure, the concurrent use of an oral retinoid and a tetracycline should be avoided.

Drug/Laboratory Test Interactions: False elevations of urinary catecholamine levels may occur due to interference with the fluorescence test.

Carcinogenesis, Mutagenesis, Impairment of Fertility:

Doxycycline was assessed for potential to induce carcinogenesis in a study in which the compound was administered to Sprague-Dawley rats by gavage at dosages of 20, 75, and 200 mg/kg/day for two years. An increased incidence of uterine polyps was observed in female rats that received 200 mg/kg/day, a dosage that resulted in a systemic exposure to doxycycline approximately 12.2 times that observed in female humans who use ORACEA (exposure comparison based upon area under the curve (AUC) values). No impact upon tumor incidence was observed in male rats at 200 mg/kg/day, or in either gender at the other dosages studied. Evidence of oncogenic activity was obtained in studies with related compounds, i.e., oxytetracycline (adrenal and pituitary tumors) and minocycline (thyroid tumors).

Doxycycline demonstrated no potential to cause genetic toxicity in an *in vitro* point mutation study with mammalian cells (CHO/HGPRT forward mutation assay) or in an *in vivo* micronucleus assay conducted in CD-1 mice. However, data from an *in vitro* assay with CHO cells for potential to cause chromosomal aberrations suggest that doxycycline is a weak clastogen.

Oral administration of doxycycline to male and female Sprague-Dawley rats adversely affected fertility and reproductive performance, as evidenced by increased time for mating to occur, reduced sperm motility, velocity, and concentration, abnormal sperm morphology, and increased pre- and post-implantation losses. Doxycycline induced reproductive toxicity at all dosages that were examined in

Continued on next page

Consult 2007 PDR® supplements and future editions for revisions

Oracea—Cont.

this study, as even the lowest dosage tested (50 mg/kg/day) induced a statistically significant reduction in sperm velocity. Note that 50 mg/kg/day is approximately 3.6 times the amount of doxycycline contained in the recommended daily dose of ORACEA for a 60-kg human when compared on the basis of AUC estimates. Although doxycycline impairs the fertility of rats when administered at sufficient dosage, the effect of ORACEA on human fertility is unknown.

Pregnancy: Teratogenic Effects: Pregnancy Category D. (See WARNINGS Section). Results from animal studies indicate that doxycycline crosses the placenta and is found in fetal tissues.

Nonteratogenic effects: (See WARNINGS Section).

Labor and Delivery: The effect of tetracyclines on labor and delivery is unknown.

Nursing Mothers: Tetracyclines are excreted in human milk. Because of the potential for serious adverse reactions in infants from doxycycline, ORACEA should not be used in mothers who breastfeed. (See WARNINGS Section).

Pediatric Use: ORACEA should not be used in infants and children less than 8 years of age (See WARNINGS section). ORACEA has not been studied in children of any age with regard to safety or efficacy, therefore use in children is not recommended.

ADVERSE REACTIONS

Adverse Reactions in Clinical Trials of ORACEA: In controlled clinical trials of adult patients with mild to moderate rosacea, 537 patients received ORACEA or placebo over a 16-week period. The most frequent adverse reactions occurring in these studies are listed in Table 3.

Table 3. Incidence (%) of Selected Adverse Reactions in Clinical Trials of ORACEA (n = 269) vs. Placebo (n = 268)

	ORACEA	Placebo
Nasopharyngitis	13 (4.8)	9 (3.4)
Pharyngolaryngeal Pain	3 (1.1)	2 (0.7)
Sinusitis	7 (2.6)	2 (0.7)
Nasal Congestion	4 (1.5)	2 (0.7)
Fungal Infection	5 (1.9)	1 (0.4)
Influenza	5 (1.9)	3 (1.1)
Diarrhea	12 (4.5)	7 (2.6)
Abdominal Pain Upper	5 (1.9)	1 (0.4)
Abdominal Distention	3 (1.1)	1 (0.4)
Abdominal Pain	3 (1.1)	1 (0.4)
Stomach Discomfort	3 (1.1)	2 (0.7)
Dry Mouth	3 (1.1)	0 (0)
Hypertension	8 (3.0)	2 (0.7)
Blood Pressure Increase	4 (1.5)	1 (0.4)
Aspartate Aminotransferase Increase	6 (2.2)	2 (0.7)
Blood Lactate Dehydrogenase Increase	4 (1.5)	1 (0.4)
Blood Glucose Increase	3 (1.1)	0 (0)
Anxiety	4 (1.5)	0 (0)
Pain	4 (1.5)	1 (0.4)
Back Pain	3 (1.1)	0 (0)
Sinus Headache	3 (1.1)	0 (0)

Note: Percentages based on total number of study participants in each treatment group.

Adverse Reactions for Tetracyclines: The following adverse reactions have been observed in patients receiving tetracyclines at higher, antimicrobial doses: Gastrointestinal: anorexia, nausea, vomiting, diarrhea, glossitis, dysphagia, enterocolitis, and inflammatory lesions (with vaginal candidiasis) in the anogenital region. Hepatotoxicity has been reported rarely. Rare instances of esophagitis and esophageal ulcerations have been reported in patients receiving the capsule forms of the drugs in the tetracycline class. Most of the patients experiencing esophagitis and/or esophageal ulceration took their medication immediately before lying down. (See DOSAGE AND ADMINISTRATION Section).

Skin: maculopapular and erythematous rashes. Exfoliative dermatitis has been reported but is uncommon. Photosensitivity is discussed above. (See WARNINGS Section).

Renal toxicity: Rise in BUN has been reported and is apparently dose-related. (See WARNINGS Section).

Hypersensitivity reactions: urticaria, angioneurotic edema, anaphylaxis, anaphylactoid purpura, serum sickness, pericarditis, and exacerbation of systemic lupus erythematosus.

Blood: Hemolytic anemia, thrombocytopenia, neutropenia, and eosinophilia have been reported.

OVERDOSAGE

In case of overdosage, discontinue medication, treat symptomatically, and institute supportive measures. Dialysis does not alter serum half-life and thus would not be of benefit in treating cases of overdose.

DOSAGE AND ADMINISTRATION

THE DOSAGE OF ORACEA DIFFERS FROM THAT OF DOXYCYCLINE USED TO TREAT INFECTIONS. EXCEEDING THE RECOMMENDED DOSAGE MAY RESULT IN AN INCREASED INCIDENCE OF SIDE EFFECTS INCLUDING THE DEVELOPMENT OF RESISTANT MICROORGANISMS.

One ORACEA Capsule (40 mg) should be taken once daily in the morning on an empty stomach, preferably at least one hour prior to or two hours after meals. Efficacy beyond 16 weeks and safety beyond 9 months have not been established.

Administration of adequate amounts of fluid along with the capsules is recommended to wash down the capsule to reduce the risk of esophageal irritation and ulceration. (See ADVERSE REACTIONS Section).

HOW SUPPLIED

ORACEA (beige opaque capsule printed with CGPI 40) containing doxycycline, USP in an amount equivalent to 40 mg of anhydrous doxycycline. Bottle of 30 (NDC 64682-009-01).

Storage: All products are to be stored at controlled room temperatures of 15°C -30°C (59°F -86°F) and dispensed in tight, light-resistant containers (USP). Keep out of reach of children.

Patent Information: U.S. Patents 5,789,395; 5,919,775 and patents pending.

ORACEA is a trademark of CollaGenex Pharmaceuticals, Inc., Newtown, PA, 18940

Manufactured by: CardinalHealth Winchester, KY 40391

Marketed by: CollaGenex Pharmaceuticals, Inc. Newtown, PA, 18940 May 26, 2006

Patient Information

ORACEA™ (Or-RAY-sha) (doxycycline, USP). Capsules 40 mg*

*30 mg Immediate Release & 10 mg Delayed Release beads

Read the Patient Information that comes with ORACEA before you start taking it and each time you get a refill. There may be new information. This information does not take the place of talking with your doctor about your treatment or your medical condition. If you have any questions about ORACEA, ask your doctor or pharmacist.

What is ORACEA?

ORACEA is a prescription medicine to treat only the pimples or bumps on the face caused by a condition called rosacea. ORACEA may not lessen the facial redness caused by rosacea.

ORACEA should not be given to infants and children 8 years or younger. It may cause stained teeth in infants and children. The yellow, gray, brown colored staining will not go away.

ORACEA should not be used for the treatment of infections.

ORACEA has not been studied for use longer than 9 months.

Who should not take ORACEA?

Do not take ORACEA if you are allergic to any medicine known as a tetracycline, including doxycycline and minocycline. If you are not sure, talk to your doctor or pharmacist.

What should I tell my doctor before taking ORACEA?

Tell your doctor about all your health conditions. Be sure to tell your doctor if you

- have had an allergic reaction to doxycycline or other medicines known as tetracyclines
- are pregnant or planning to become pregnant. ORACEA may harm your unborn baby.
- are breastfeeding. ORACEA passes into your breast milk and may harm your baby.
- have kidney problems
- have liver problems
- have had surgery on your stomach
- have or had a yeast or fungus infection in your mouth or vagina.
- spend time in sunlight or artificial sunlight, such as a tanning booth or sunlamp.

ORACEA may cause you to get severe sunburns (photosensitivity).

Tell your doctor about all of the medicines you take, including prescription and non-prescription medicines, vitamins, and herbal supplements.

ORACEA and other medicines can affect each other causing serious side effects. Especially tell your doctor if you take

- blood thinners (anticoagulants), such as warfarin or Coumadin®. Your doctor may need to change your anticoagulant dose.
- any medicine to treat pimples (acne) or psoriasis

ORACEA may affect the way other medicines work, and other medicines may affect how ORACEA works. Especially tell your doctor if you take

- birth control pills. Talk to your doctor about other methods of birth control because birth control pills may not work as well when you are taking ORACEA.
- antacid medicines containing calcium, magnesium or aluminum,
- products containing iron
- any medicine to treat an infection
- any medicine to treat seizures, such as barbiturates, Phenobarbital, carbamazepine, Tegretol®, phenytoin or Dilantin®

Know the medicines you take. Keep a list of your medicines and show it to your doctor and pharmacist when you get a new medicine.

How should I take ORACEA?

- Take ORACEA exactly as prescribed by your doctor. Do not change your dose unless told to do so by your doctor. Taking more than the prescribed dose may increase your chance of having side effects.
- The usual dose of ORACEA is one capsule in the morning.
- Do not take ORACEA with or right after a meal. It may not work as well. If you take ORACEA close to meal times, you should take it at least one hour before your meal or two hours after your meal.
- Take ORACEA with a full glass of water while sitting or standing. To prevent irritation to your throat, do not lay down right after taking ORACEA.
- Do not take ORACEA with or right after taking antacids or products that contain calcium, aluminum, magnesium, or iron. ORACEA may not work as well.
- If you take too much ORACEA, or overdose, stop taking ORACEA and talk to your doctor.
- If you miss a dose of ORACEA, skip that dose and take the next dose at your regular time.
- Do not take ORACEA to treat infections caused by bacteria germs or viruses.
- Your doctor may do blood tests from time to time to check for side effects of ORACEA.

What should I avoid while taking ORACEA?

- Do not spend time in sunlight or artificial sunlight, such as a tanning booth or sunlamp. You could get a severe sunburn. Use sunscreen and wear clothes that cover your skin if you have to be in sunlight.
- You should not take ORACEA if you are pregnant or breast feeding.
- You should not take ORACEA if you are a man or a woman trying to have a baby.

What are the possible side effects of ORACEA?

ORACEA may cause serious side effects. Stop taking ORACEA and talk to your doctor right away if you

- have any skin rash, redness, or unusual or severe sunburn
- have an allergic reaction, which may cause a skin rash, swelling, difficulty swallowing, or a feeling of tightness in your throat
- become pregnant
- have stomach cramps, high fever, and bloody diarrhea (pseudomembranous colitis)
- have fever, rash, joint pain, and feel tired. These may be symptoms of a problem where your body is attacking itself (autoimmune syndrome).

ORACEA may also cause

- darkening of your skin, scars, teeth, or gums
- severe headaches, dizziness, or double vision from high pressure in the fluid around the brain

Some common side effects of ORACEA are soreness in the nose and throat, diarrhea, and sinus infection.

These are not all the possible side effects of ORACEA. For more information, ask your doctor or pharmacist.

Tell your doctor if you have a side effect that bothers you or that does not go away.

How should I store ORACEA?

- Store ORACEA at room temperature at 59°F to 86°F (15°C to 30°C).
- Keep ORACEA in a tightly closed container.
- Keep ORACEA inside container and out of light.
- Keep ORACEA and all medicine out of the reach of children.

General Information about ORACEA

Do not take ORACEA for a condition for which it was not prescribed. Do not give ORACEA to other people, even if they have the same symptoms you have. It may harm them.

This leaflet gives the most important information about ORACEA. For more information, talk with your doctor or health care provider. You can also ask your doctor or pharmacist for information that is written for health professionals. More information about ORACEA is available by contacting CollaGenex Pharmaceuticals Inc. at 1-888-339-5678

What are the ingredients in ORACEA?

Active ingredient: doxycycline

Inactive ingredients: hypromellose, iron oxide red, iron oxide yellow, methacrylic acid copolymer, polyethylene glycol, Polysorbate 80, sugar spheres, talc, titanium dioxide, and triethyl citrate.

ORACEA is a registered trademark of CollaGenex Pharmaceuticals, Inc., Newtown, PA 18940.