

**PARKER**

# Gravity Wagons

5250

6250

7250



**PARKER**

The **first**  
family of grain  
handling  
equipment

**EXHIBIT 1008**



**Quality... Capacity... Convenience.**

**PARKER**

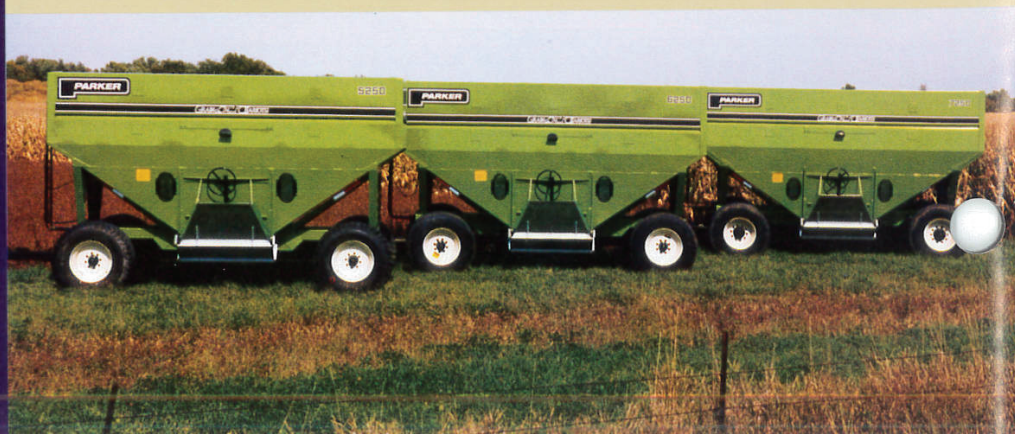
The **first**  
family of grain  
handling  
equipment

With close to 40 years of manufacturing experience, Parker offers the finest in grain handling equipment. Founded in 1960 by S.L. "Hank" Parker in Silver Lake, Indiana, the first gravity wagon was sold on October 3, 1960 for \$140 to Kenneth Coble of South Whitley, Indiana. The business grew quickly in Silver Lake, and, given the large demand in the western corn belt for this type of equipment, Hank Parker sought another manufacturing location west of the Mississippi. The Jefferson, Iowa plant was built in 1965 and has been in operation ever since. The Silver Lake plant closed in 1990 and all production was moved to Jefferson. We invite you to stop by for a plant tour and see the leading gravity wagon manufacturing facility.



Feature after feature, Parker gravity wagons offer the top of the line for quality, heavy-duty grain handling. Available in large capacity sizes, the Parker gravity wagons offer new running gears, laser cut end panels, new lighting systems that include flush fit mountings, a factory built main line wiring harness that's pre-wired, new flood light above the grain door, reflective decals and long lasting oven-cured paint. Plus, we've maintained our standards of quality with 12 ga. and 14 ga. bed construction, safety striping, stiffeners, large spindles, steep side and end slopes and telescoping tongue to mention just a few.

We invite comparison.





# MODEL 5250

Handles more grain with less work.

500 bushel capacity lets you keep up with bigger harvesting equipment. The one-piece structural end supports add greater strength to the 5250. Like its bigger family members, the 5250 has steep slopes and tapered front panel with a discharge drop-off to prevent bridging and provide faster clean-out. The improved productivity will lower your cost per bushel harvest rate. Our "tell-it-like-it-is" policy means you can trust our specifications. See for yourself the quality in the heavy-duty construction, the massive strength of the design and materials and the extra touches like silicone filling of seams between the welds.



One-piece structural end supports.





**The Big Capacity Parker Gravity Wagons  
Offer Improved Productivity to Any Operation.**

## MODEL 6250



Heavy duty 6" x 3" structural tubing sills offer maximum strength.



Finishes first with bigger loads.

The strong, sturdy 6250 moves up to 600 bushels swiftly from field to storage and unloads fast to give you more efficient control over your harvest. The ends are steep sloped and offer fast and efficient unloading. The 6250 has one-piece structural steel plate end supports and heavy-duty understructure. The smooth operating large discharge door has machined, steel rack and pinion so it can be opened to the precise amount of discharge you prefer. The rugged welded construction and leading features has made Parker gravity wagons the leaders in resale value.







## MODEL 7250

Offers the highest capacity, greatest strength.

Moving over 700 bushels is efficient handling and allows improved productivity. The 7250 is the biggest Parker wagon that makes short work of harvest handling. Bed walls are formed with corrugations to improve bulge strength. One-piece  $\frac{3}{16}$ " steel plate understructure end supports provide a double digit percentage increase in strength. Channel and formed 10 gauge steel carriage underbracing is heavier than the closest competitor and distributes the load more evenly along the sills. The substantial wagon gear is an honest 25 ton gear with truthfully rated spindles, wheels and structure.



Extra strength end support of one-piece  $\frac{3}{16}$ " laser cut plate.



Today's harvest calls for a new wagon train.

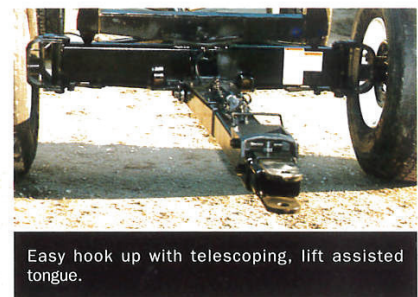
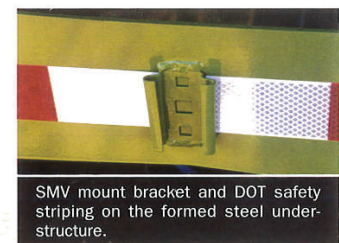
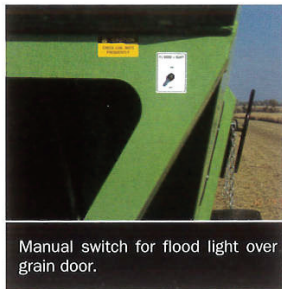
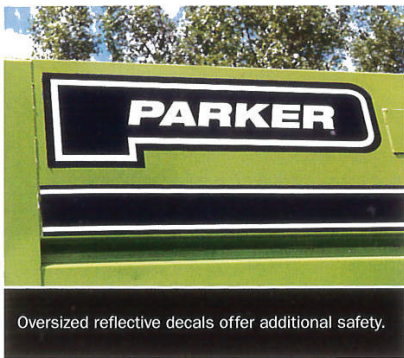


**P**arker's quality is supported by our service. Our professional representatives service their Parker dealerships with updated programs on pricing, new products and sale strategies. Qualified Parker dealers in turn extend that information on to you, our valued customer with existing inventory and service after the sale. Parker gravity wagons carry a full year warranty from date of purchase. With our new oven cured paint, we now offer custom paint colors (dark green, bright red) on special orders. We ask that your order indicate color selection. Talk to your local Parker dealer today and review our numerous options along with our quality standard features on the Parker gravity wagon size to fit your operation.

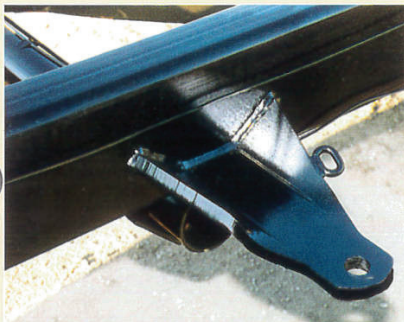
**Efficiency...  
Strength...  
Long Life.**

**PARKER**









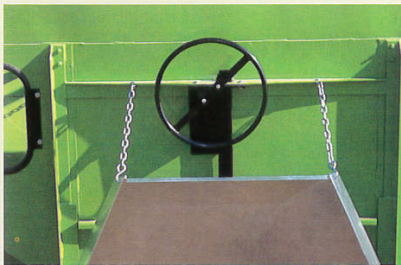
Heavy steel tail hitch with safety chain hook-up.



Convenient flood light above grain door.



Tubular steel ladder permits safe inside inspection.



Door opens easily with rack and machined pinion gear.



Metering door allows choice of flow or taking moisture samples. Galvanized diverter chute gives accurate discharge.



Electrical plug storage receptacle keeps plug clean.



Rubber cushioned rocking bolster provides resilient support and load balance.



Heavy duty wheels.

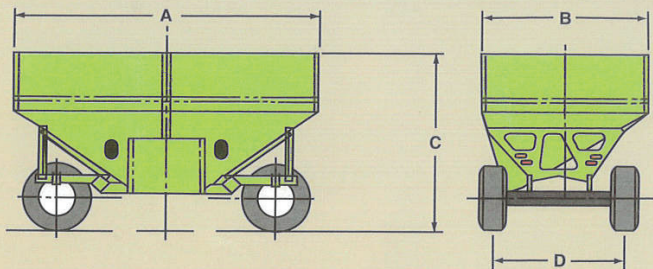


Field tests continue to prove that Parker's features provide the farmer with practical benefits for profitability.





## Dimensions and Specifications



5250

6250

7250

Bed Capacity, Bushels, up to	500 Bu.	600 Bu.	700 Bu.
Bed Capacity - Cu. Ft.	603 Ft. <sup>3 ①</sup>	700 Ft. <sup>3 ①</sup>	810 Ft. <sup>3 ①</sup>
Overall Dimensions Length (A)	16'	16'	16'8"
Width (B)	7'8"	8'4"	9'2"
Height (C)	10'4"	10'3"	10'4"
Weight, Pounds (Approx.)	5,300	6,000	6,500
Discharge Doors	44"x15"	44"x15"	44"x15"
Primary Metering	14"x 5½"	14"x 5½"	14" x 5½"
Discharge with Std. Diverter Chute	side or center	side or center	side or center
Sills, Structural Tubing	6"x3"	6"x3"	6"x3"
Box Construction, Hot Rolled Steel Sheet	14 ga. & 12 ga.	14 & 12 ga.	14 & 12 ga.
Understructure, Channel/Formed Sheet	C5/10 ga.	C5/10 ga.	C5/10 ga.
End Supports, One Piece Laser Cut	¾" Plate	¾" Plate	¾" Plate
Paint, Primer Plus Top Coat Enamel	Std.	Std.	Std.
Ladder, Heavy Duty Tubular Steel	7'	7'	7'
Cross Brace Stiffeners	6	6	6
Wagon Gear Capacity	14 or 16 Tons	20 Tons	25 Tons
Wheel Base	12'	12'	12'
Track Width (D)	80" to 89"	89"	89"
Spindles	2¾" or 3¼"	3¼"	3½"
Wheels	Flotation or Truck	Flotation or Truck	22.5x13 10 Bolt
Wheel Rated Capacity, Pounds	8,000	10,000	12,500
Tongue, Lift Assist, Telescopic	Std.	Std.	Std.
Bolster, Rubber Cushioned, Rocking	Std.	Std. Double	Std. Double
Brakes, Inertia Hydraulic	Std. 2 Wheel	Std. 4 Wheel	Std. 4 Wheel
Lights, Tail and Turn Signals	Std.	Std.	Std.

Parker Gravity Wagons are designed for non-highway use at tractor speeds only.

As we are continually striving to improve our products and available equipment, specifications are subject to change without notice.

① Level full to top of wagon.



**PARKER INDUSTRIES**

900 East Highway 30, Jefferson, IA 50129-1218  
515-386-3386 Fax 515-386-2487  
Toll Free 800-526-3492

Your Selected Parker Dealer:



© 1996 Parker Industries Printed in USA