



15 captures

20 Jun 00 - 14 Mar 08

http://gnutella.wego.com/go/wego.pages.page?groupId=116705&amp;view=page&amp;page

Go

MAY  
JUN 20  
1999 2000 2001**Home**

What's New  
Developer's Corner  
Help/Support  
**Gnutella?**  
**Tutorial**  
**FAQ**  
Software  
Third-Party ¶1  
**Download**  
Press  
Promote Gnutella  
About  
Site Map

**Community**

Discussion Board

**Resources**

File Center  
Links ¶2

**1743392**

Since April 10th, 2000

**View Support Pages**

INVITE OTHERS | HELP | FEEDBACK  
GUEST: [LOG IN](#) | [JOIN GROUP](#)

[Back to all pages](#)**SUPPORT**
[Main](#) | [FAQ](#) | **Tutorial** | [Corporate](#) | [Firewalls](#)
**Support : Tutorial****Tutorial**Maintained By [nouser](#)

Last update: May 23, 2000

[What Is Gnutella?](#)

Please read the section of the site about what exactly Gnutella is.

[How To Download](#)[How To Install](#)[How To Uninstall](#)[How Gnutella Works](#)[Let's Get Started](#)[Interface Rundown](#)[Getting Connected](#)[How To Search](#)[Searching Tips](#)[Limiting Searches](#)[Client Configuration](#)

Ok, so maybe you've already downloaded Gnutella and maybe you're not quite sure how to use it. I don't blame you. At first glance, yeah, it might seem like something for the techie but once you learn how to use it'll be a tool you'll use everyday.

**How To Download**

Click on the Download section after you've gone to <http://gnutella.wego.com/>. Download the latest version, which should be listed first.

- Hit that link and choose to [Save File](#).
- Once you have downloaded it double-click on the file and install it using the install program, which should take you step by step through the installation process. See: [How To Install](#).

**How To Install**

If you are prompted with the install program leave the type of install as normal and hit next. At this point you will be asked to choose a directory to install the program in. The default is "c:\Program Files\gnutella". This screen will also tell you if you have enough room to install Gnutella, after you have specified a directory hit next and the files will be installed. After you have installed Gnutella you will have shortcuts on the desktop, and the start menu. Hit one of these shortcuts and Gnutella will be launched.

**How To Uninstall**

There is no uninstall program for Gnutella, which means that you'll have to delete

Microsoft Exhibit 1009

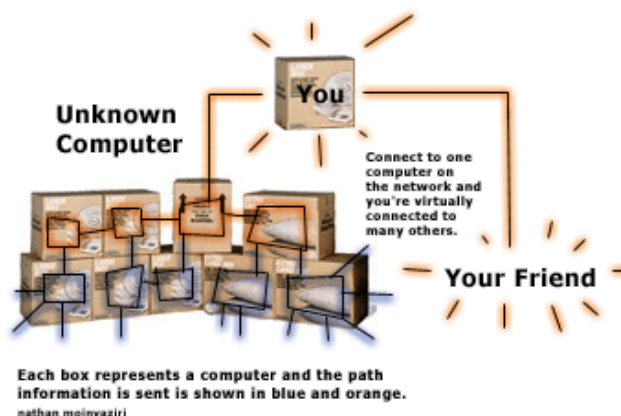
Gnutella manually. Gnutella saves none of its settings in the registry so there should be no problem there. All you need to do is delete the folder where you installed Gnutella. For most people they would goto My Computer, then to Program Files and delete the Gnutella folder they see. If you didn't install it in the default directory, you're not going to find it here.

¶6

## How Gnutella Works

Before we start, we need to get some things clear. For one, Gnutella doesn't use servers to connect to like Napster or CuteMX. You connect to one person on the network, by entering their IP in the IP text box and that connects you directly to that one person on the network. When you search, though, it will do a recursive search throughout the network starting with that one person you are connected to.

Fig. 1



¶7

As you can see the box that says, "You" connects to another box or computer. "You" is directly connected to that box and indirectly connected to all of the other boxes. When a search is done, "You" send the search to the box it is directly connected to, and that box sends the search to all the boxes it is connected and so on and so forth.

¶8

### *For Techies*

Gnutella is a peer-to-per network. Each person on the network is considered a hub.

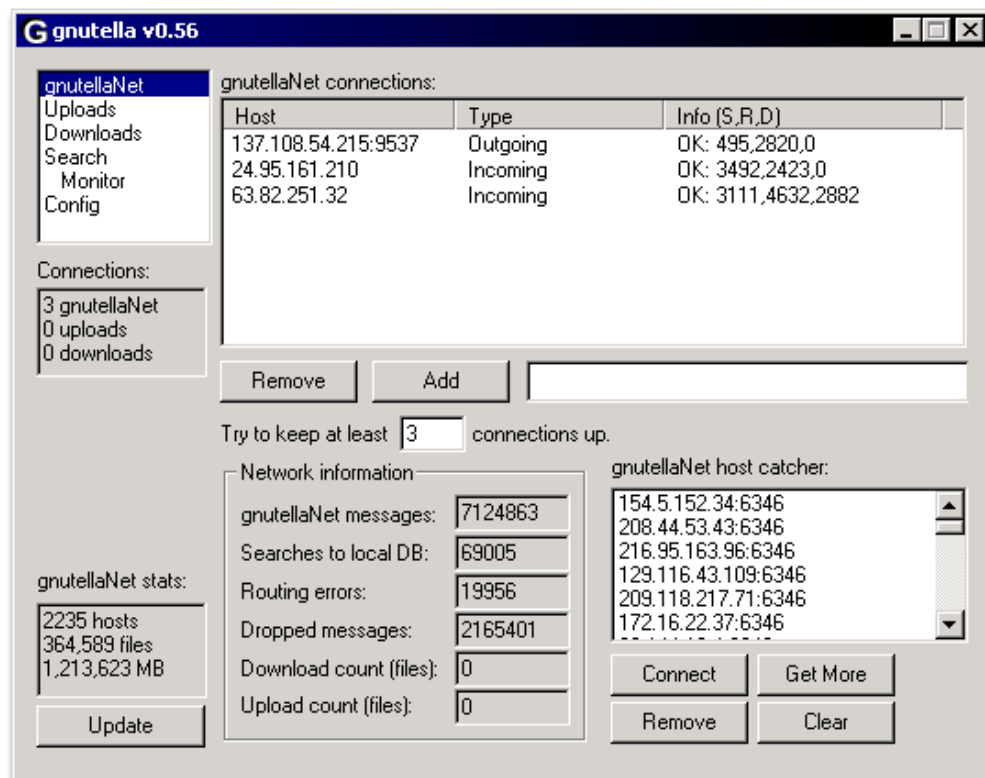
In other terms, everybody on the network is a client and a server.

¶9

## Let's Get Started

[Back to The Top](#)

Fig. 2



## ¶10 Just Tell Me How To Get Connected!

When you first load up Gnutella, it doesn't automatically connect to any servers or anything which is why you have to find somebody to connect to before you can start search for files and downloading them.

¶11 First thing you need to do is find one of the computers on the network. You need to at least have the [IP](#) of the computer that is on the network.

¶12 You would enter IP address in the format as shown below:

*IP : Port*

findshit.gnutella.com:8015 and 24.15.16.29 are examples.

If you are connecting to somebody on the default port (6346) then you don't need to add ':6346'

¶13 The IP addresses listed in this tutorial page probably won't work for you. [To get an IP](#) on the network you might want to check out this page. You can download the gnutella.net file listed there and put it in your Gnutella directory. IP addresses are also often up at the main gnutella page, <http://gnutella.wego.com/>. Don't give up on the first IP address that you try, it may take several tries before you actually get connected to any part of the network. If you can't seem to find any IP addresses there you might want to check out the channel topic on #gnutella on the EFnet IRC network (use [mIRC](#) if you don't have a windows IRC client).

## ¶14 Interface Rundown

When you first look at Gnutella for Windows it may appear not appear to be the powerful program that it is, but Gnutella covers a good range of functionality. The upper left-hand corner contains the tabs GnutellaNet, Uploads, Download, Search, Monitor, and Config.

Feature	Function
<b>GnutellaNet</b>	The main screen it shows your connected hosts, network information, host catcher, and a text box to add servers

<b>Uploads</b>	Shows what people are downloading from you and their download progress
<b>Downloads</b>	Shows you are downloading and your download progress
<b>Search</b>	Where you search for files to download. You must be connected to somebody in order to download or even search for files to download
<b>Search Monitor</b>	In this screen you can see what people are searching for. <u>NOTE: THE SEARCH MONITOR IS NOT FOR CHATTING.</u>
<b>Config</b>	Where you can change the options relating to the way that your Gnutella client functions

¶15

### Techie Explanation Of The Interface

Next lets start by going over the picture above and what it means to you.

List	Definition of Contents
<b>Connection List</b>	This is the list of people you are directly connected to
Header	Definition of Contents Under The Header
<u>Host</u>	IP of computer you are connected to
<u>Type</u>	Type of connection. If you add an IP to your connection list the type is considered outgoing and the other way around is an incoming connection.
<u>Info</u>	Packets <b>S</b> ent, Packets <b>R</b> eceived, Lost/ <b>D</b> ropped Packets

List	Definition of Contents
<b>Connection Stats</b>	This is the list of people you are directly connected to
Header	Definition of Contents Under The Header
<u>gnutellaNet</u>	Number of direct connections you have open
<u>Uploads</u>	Number of uploads in progress
<u>Downloads</u>	Number of downloads in progress

List	Definition of Contents
<b>GnutellaNet Stats</b>	Contains information on network you and your connections make
Header	Definition of Contents Under The Header
<u>Hosts</u>	Number of direct connections and the number of the direct connections' connections. This makes up your network.
<u>Files</u>	Number of files in the network
<u>MB</u>	Size of files in the network
<u>Ms Avg. Ping</u>	Average ping time in milliseconds to all the Hosts in the network

Feature	Function
<b>Add/Remove Button</b>	Adds or removes an IP from your connections list.

**Keep #  
Connections Up**

How many connections to other computers Gnutella should try to keep open. If this number is lower than the number of connections Gnutella has open then Gnutella adds hosts from the *Host Catcher* list and tries to connect to them.

**Host Catcher**

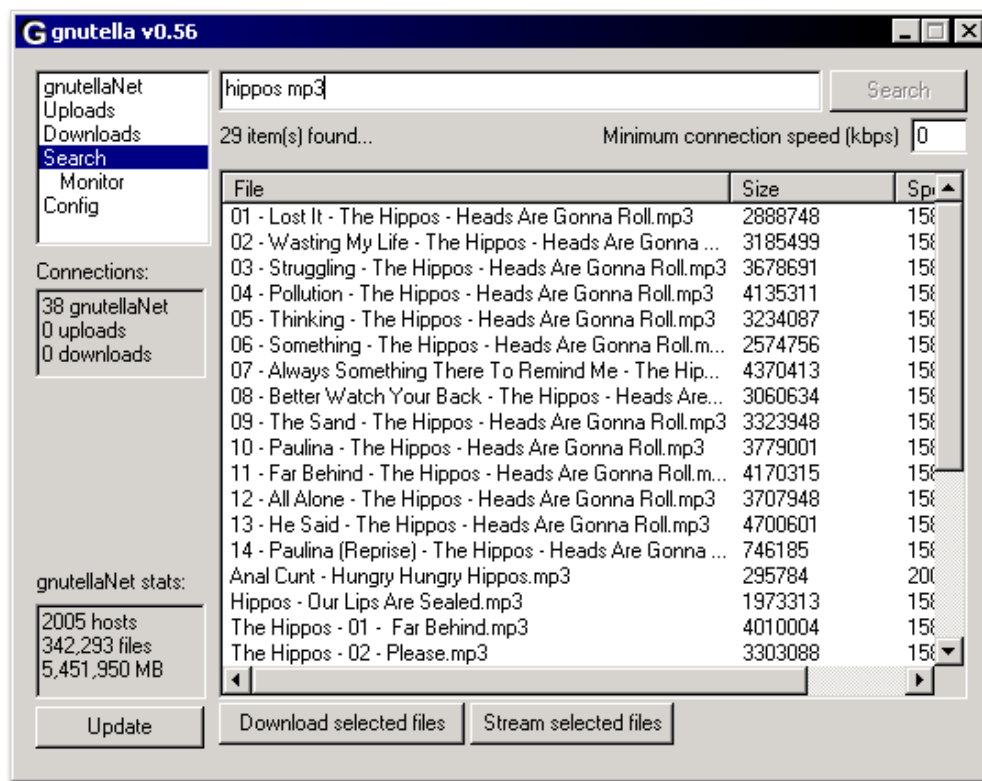
When your stats are updated or information is sent from one computer to another in which an IP is required to send the data, the IP is added to this list. When Gnutella is then in need of hosts to connect to it uses the IP addresses in this list.

¶16

**How To Search**

[Back to The Top](#)

Fig. 3



Again, you have to be connected to somebody for searching to work. (See [Just Get Me Connected!](#))

¶17

To search for anything on the network just enter what you are search for in the search text box and press the 'Search' button.

¶18

The search button works like the button on an elevator. No matter how many times you search for the same thing over and over, it will not make the searching go any faster than it is.

¶19

If you are not getting as many search results as you would like, try connecting to another computer on the network which will allow you to connect to even more computers on the network. Dialup users shouldn't connect to more than 1 or 2 other peers, and high-bandwidth users should limit themselves to 10 connections. Too many connections will consume all your available bandwidth (each one uses 500-1000 bytes/second) and cause dropped packets due to redundancy on the network. Also make sure you have more than 1 host in the Gnutella stats on the side screen. You need to press 'update' to manually check how many people you are direct and indirectly connected to.

¶20

**Searching Tips**

Most of the time if you want to search for file types other than mp3's then you'll need to specify the file type as shown above.

- Periods and wild cards and Regular Expressions are not supported
- Search terms also look in a file's pathname
- Errors on uploads/downloads either because of firewall/proxy or routing to other system
- \*.AVI is the same as AVI
- Search terms are separated by spaces and wild cards and periods are converted to spaces on the remote computer when searching

¶21 When you do a search using Gnutella, it searches the files of everybody you have in your list and searches each one of their lists as well for what you're looking for. This is what you call the hosts.

¶22 **Limiting Searches**

There are a few ways to limit searches. One way is by using the Minimum Connection Speed (kbps) as shown in the graphic above. The Minimum Connection Speed will only search people who are higher than the speed that you've specified.

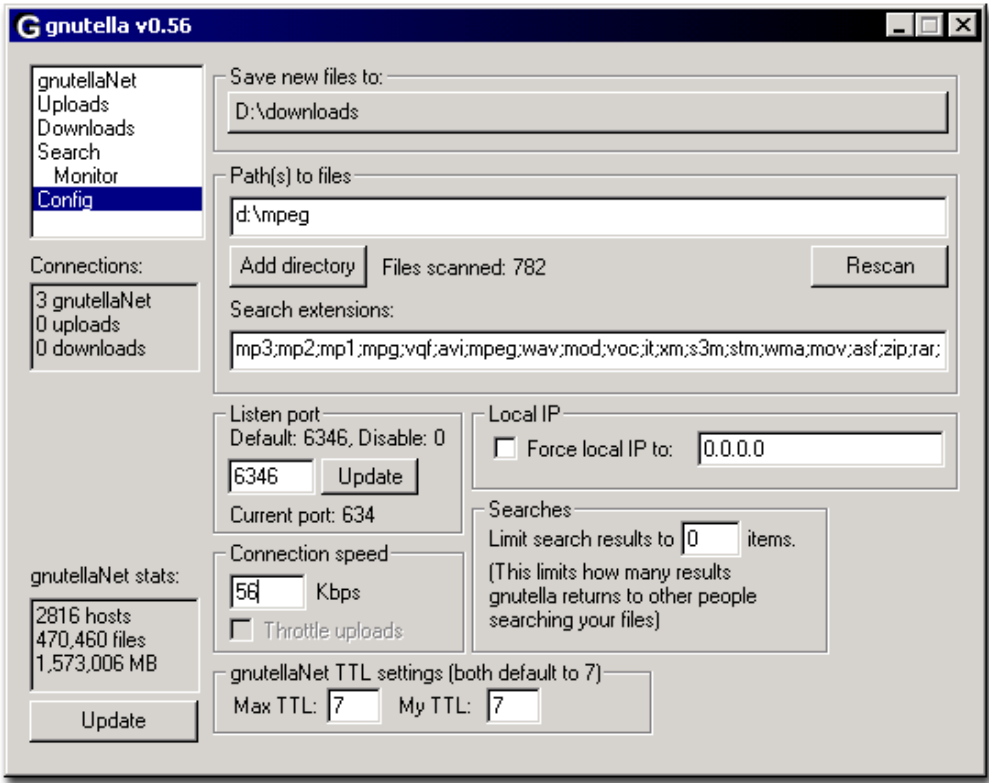
¶23 **Techie Explanation Of The Interface**

Feature	Function
<b>Stream Selected Files</b>	This only works for MP3 files and you must have WinAMP to begin with. All this does is put the MP3 file name in your WinAMP playlist so that you can list to the song as it downloads.
<b>Download Selected Files</b>	Downloads the selected files. You can see the progress of all downloads in the Download screen

¶24 **Client Configuration**

[Back to The Top](#)

Fig. 4



Feature	Function
<b>Save New Files To</b>	AKA <i>Your Download Directory</i> . Specifies the directory in which all files that are downloaded will be placed. Click on the button to change the directory.
<b>Add Directory</b>	Adds a directory to the list of shared folders. You have to press

<b>Button</b>	'Rescan' before files in any new directories are shared.
<b>Rescan Button</b>	Sets the Files Scanned property at 0 and starts to scanning each one of the shared folders for files of all types. When it is done Files Scanned will show how many files you are sharing in the directories scanned.
<b>Path(s) To Files</b>	AKA <i>Your Shared Folders</i> Specifies the folders that are scanned and then shared to the outside world! Each directory path is separated by a semi-colon.
<b>Search Extensions</b>	When you do search for something, only files with the file types specified here, will be shown. Notice that each file type does not include a period at the beginning, and that each one is separated by a semi-colon.
<b>Searches (Limit search results to...)</b>	This does not limit the number of results you get when you search for something, but only limits the number of results Gnutella returns when other people are searching through your files.
Word	Definition
<b>Listen Port</b>	Port in which people connect to you.
<b>Time To Live</b>	Number of computers a single packet goes through before it is stopped
<b>Connection Speed</b>	Your connection speed in KBPS
<b>Files Scanned</b>	Number of files you are sharing

Wego.com, Inc., does not claim ownership of or take responsibility for any content on this site.  
 There is no warranty or guarantee on anything downloaded from this site.  
 All trademarks are the property of their respective owners.

[Gnutella Website Support](#)