

[11] **Patent Number:** **5,831,600**

[45] **Date of Patent:** Nov. 3, 1998

[54] **COORDINATE INPUT DEVICE**

[75] Inventors: **Kinya Inoue; Hiroshi Shigetaka**, both
of Fukushima-ken, Japan

[73] Assignee: **ALPS Electric Co, Ltd., Japan**

[21] Appl. No.: **867,134**

[22] Filed: **Jun. 2, 1997**

[30] **Foreign Application Priority Data**

Jun. 4, 1996 [JP] Japan 8-141787

[51] **Int. Cl.⁶** **G09G 5/00**

[52] U.S. Cl. 345/173; 345/156; 345/174;
178/18; 178/19

[58] **Field of Search** 345/173, 174,
345/179, 156, 177, 471 XY; 178/18, 19

[56] **References Cited**

U.S. PATENT DOCUMENTS

4,476,463	10/1984	Ng. et al.	345/173
4,698,461	10/1987	Meadows et al.	178/19
5,305,017	4/1994	Gerpheide	345/174
5,359,156	10/1994	Chan et al.	178/19

Primary Examiner—Jeffery A. Hofsass

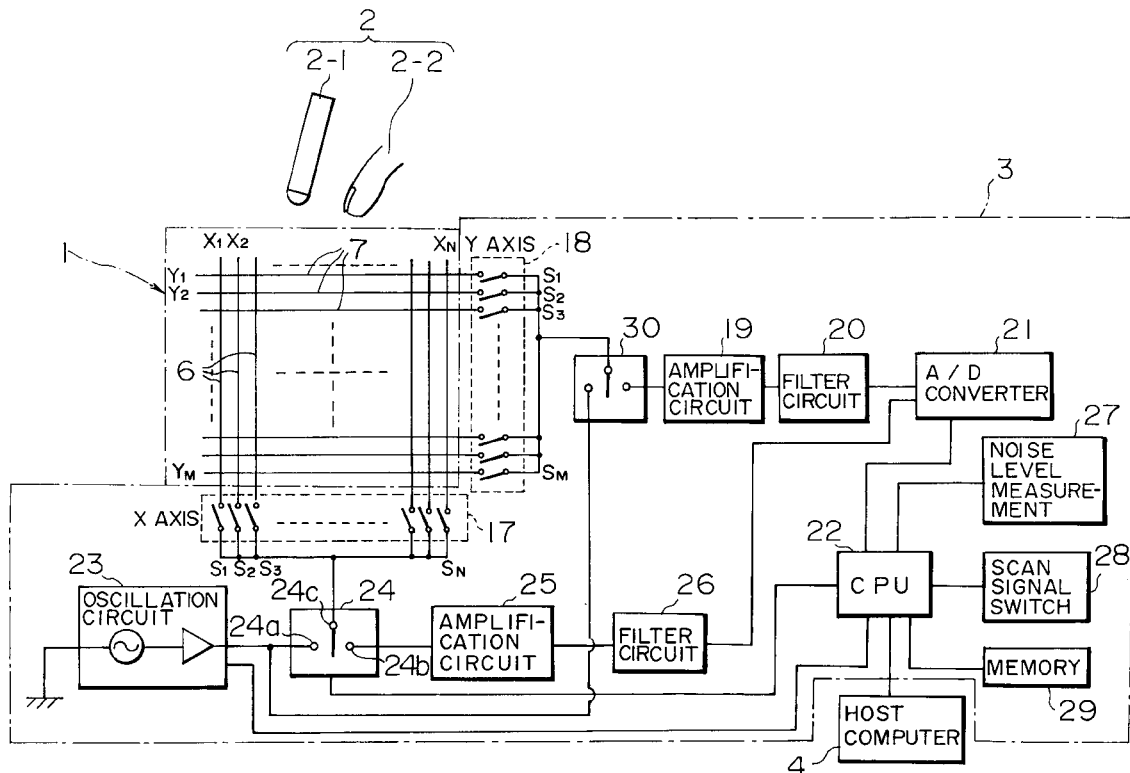
Assistant Examiner—Julie Lieu

Attorney, Agent, or Firm—Brinks Hofer Gilson & Lione

[57] **ABSTRACT**

There is provided a coordinate input device in which when the coordinate position of a contact portion on a tablet by a coordinate input object is to be detected, influence of external noise is minimized to improve the reliability of detection of the coordinate position. The coordinate input device comprises a tablet scanned by one scan signal selected from a plurality of scan signals having different frequencies, and a coordinate data generation section for generating coordinate data representing a coordinate position of a contact portion when a coordinate input object is brought into contact with the tablet, wherein when the tablet is to be scanned with a scan signal, the coordinate data formation section sequentially selects the plurality of scan signals at least once a selecting operation, measures levels of noise included in data output from the tablet each time the selecting operation is performed, and then uses a scan signal representing a minimum noise level of the measured noise levels to scan the tablet.

2 Claims, 4 Drawing Sheets



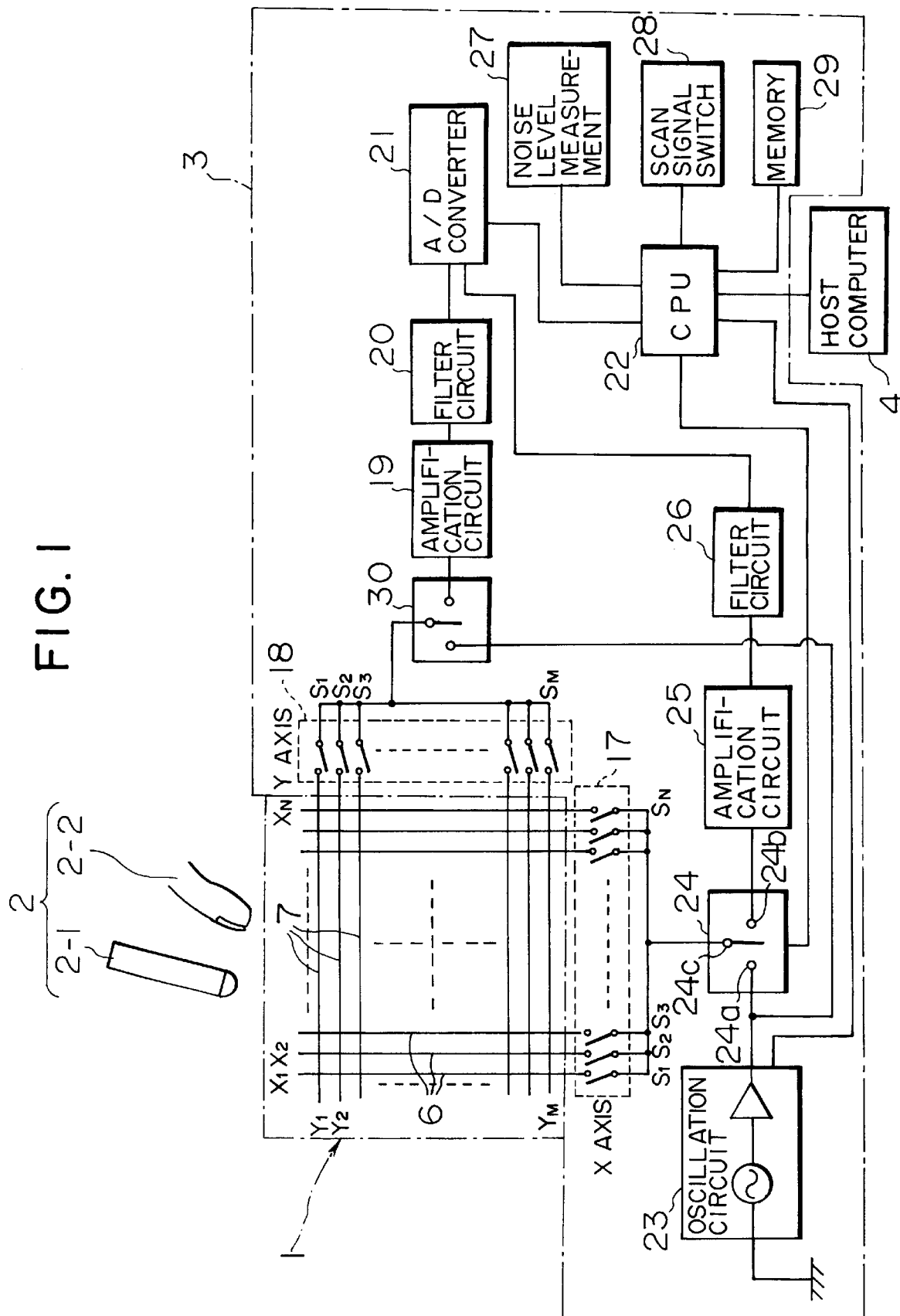


FIG. 2

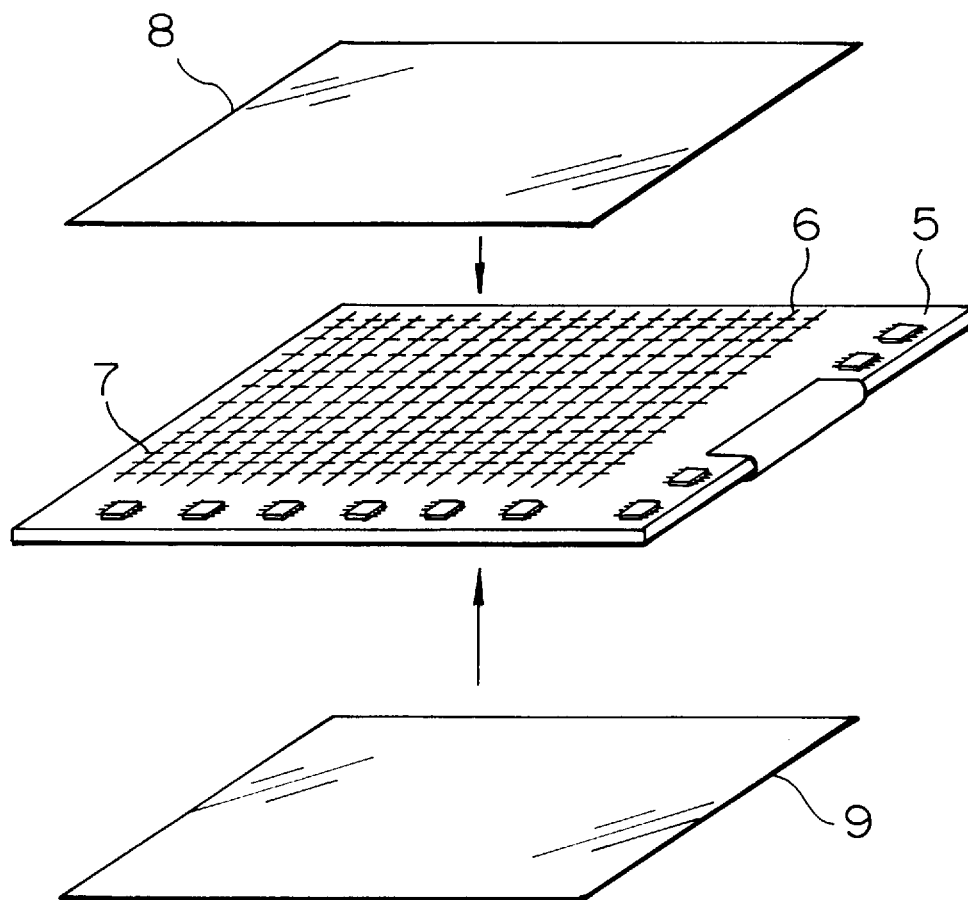


FIG. 3

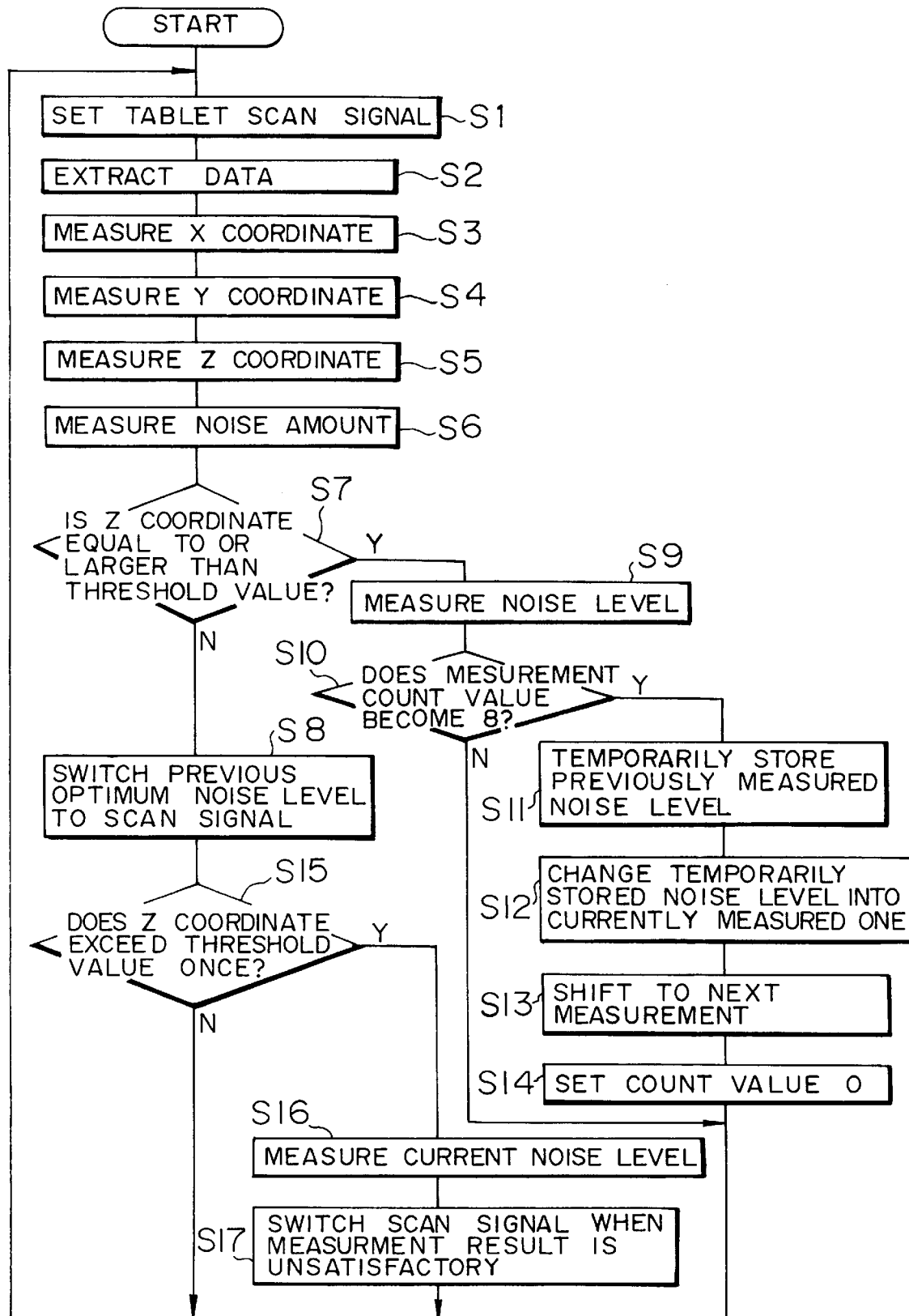
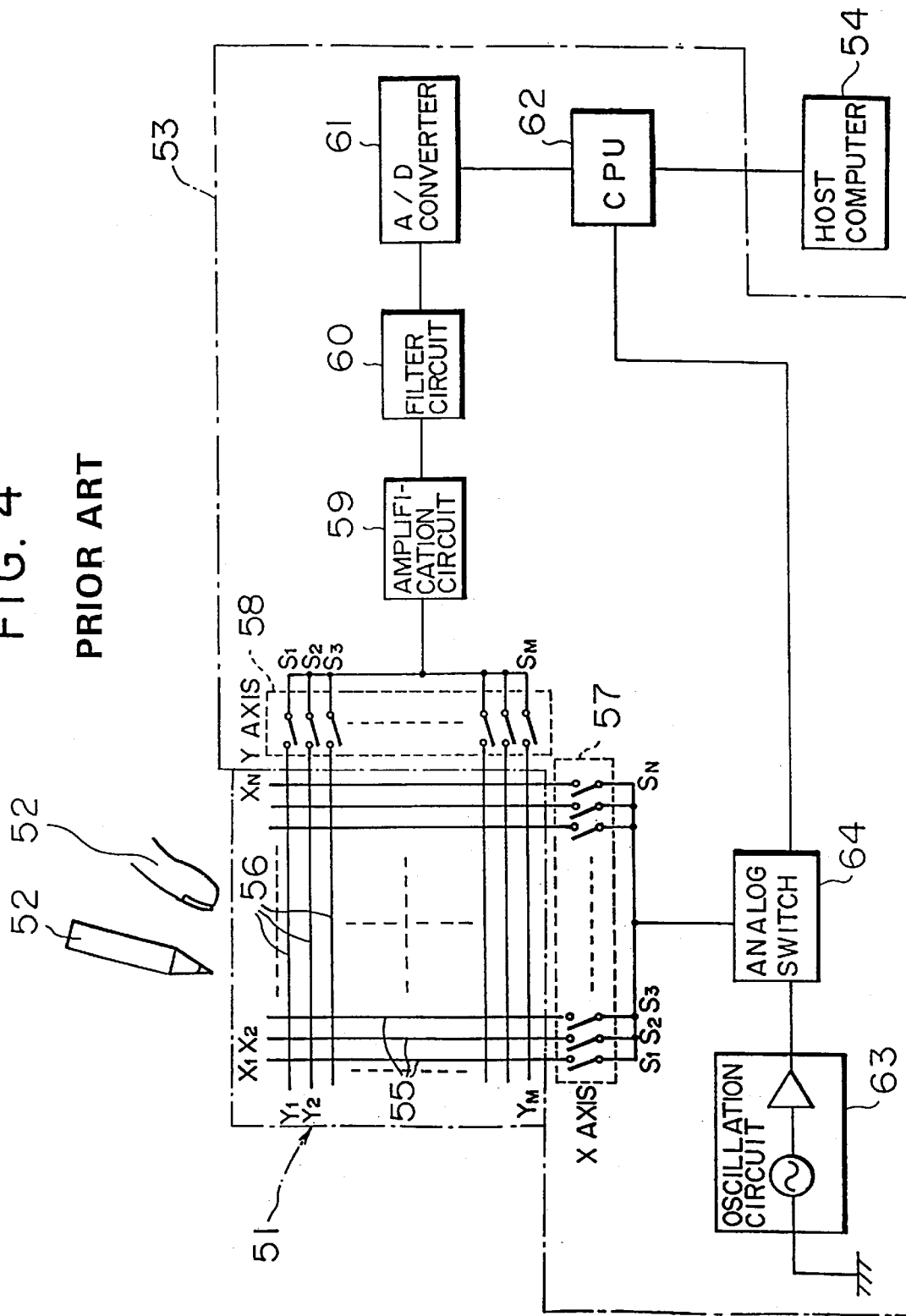


FIG. 4
PRIOR ART



COORDINATE INPUT DEVICE

BACKGROUND OF THE INVENTION

1. Field of the Invention

The present invention relates to a coordinate input device and, more particularly, to a coordinate input device in which when a coordinate input object is brought into contact with an operation area to operate the operation area, influence of external noise on coordinate data representing the coordinate position of a coordinate input object contact portion is minimized.

2. Description of the Related Art

In recent years, a coordinate input device used by the following manner has developed. That is, when a coordinate input object such as an input pen or a finger is brought into contact with a desired position of a tablet-type operation area, coordinate data representing the coordinate positions of the contact portions are sequentially output to display the contact positions of the coordinate input object.

Here, FIG. 4 is a block diagram showing a known coordinate input device.

As shown in FIG. 4, the coordinate input device is constituted by a tablet **51**, a coordinate input object **52** such as an input pen or a finger of an operator, a coordinate data generator **53**, and a signal processor **54** such as a personal computer (PC).

The tablet **51** is arranged to be perpendicular to the front and rear surfaces of a substrate (not shown), and is constituted by a plurality of (N) electrodes **55** (X_1 to X_N) and a plurality of (M) electrodes **56** (Y_1 to Y_M) which are arranged in a matrix, a protective film (not shown) adhered to the upper surface of the substrate, and the like. The input pen **52** has a tip and a surface which consist of a conductive material. The coordinate data generator **53** is constituted by an X-axis side multiplexer **57**, a Y-axis side multiplexer **58**, a first amplification circuit **59**, a first filter circuit **60**, an analog/digital converter (A/D) **61**, a controller (CPU) **62**, an oscillation circuit **63**, and an analog switch **64**. In this case, the X-axis side multiplexer **57** has a plurality of (N) switches S_1 to S_N which are arranged in parallel in each other. One ends of the switches S_1 to S_N are connected to one ends of the X electrodes **55** (X_1 to X_N), respectively, and the other ends of the switches S_1 to S_N are connected to the analog switch **64** in common. The Y-axis side multiplexer **58** has a plurality of (M) switches S_1 to S_M which are arranged in parallel. One ends of the switches S_1 to S_M are connected to one ends of the Y electrodes **56** (Y_1 to Y_M), respectively, and the other ends of the switches S_1 to S_M are connected to the input terminal of the first amplification circuit **59** in common. One input terminal of the first filter circuit **60** is connected to the output terminal of the first amplification circuit **59**, and the output terminal of the first filter circuit **60** is connected to the input terminal of the A/D converter **61**. The CPU **62** has a data output terminal connected to the signal processor **54**, and has a control terminal connected to the control terminal of the analog switch **64**.

An operation of a known coordinate input device having the above arrangement will be briefly described below.

A case wherein the tablet **51** is operated with a finger **52** of an operator will be described. An oscillation signal from the oscillation circuit **63** is supplied to the X-axis side multiplexer **57**. At this time, the switches S_1 to S_N of the X-axis side multiplexer **57** and the switches S_1 to S_M of the Y-axis side multiplexer **58** are ON/OFF-controlled with a control signal supplied from the CPU **62**. The manner of this

control is as follows. That is, the switch S_1 of the X-axis side multiplexer **57** is turned on first, and the switches S_1 to S_M of the Y-axis side multiplexer **58** are sequentially turned on. The switch S_2 of the X-axis side multiplexer **57** is turned on, the switches S_1 to S_M of the Y-axis side multiplexer **58** are sequentially turned on. Similarly, with respect to the switches S_3 to S_M of the X-axis side multiplexer **57**, one of these switches is turned on, and the switches S_1 to S_M of the Y-axis side multiplexer **58** are sequentially turned on. With the above scanning operation, oscillation signals from the oscillation circuit **63** are sequentially supplied to the X electrodes **55** (X_1 to X_N), and the signal voltages of the oscillation signals generate electrostatic capacitors between the X electrodes **55** (X_1 to X_N) and the Y electrodes **56** (Y_1 to Y_M).

Here, when the finger **52** is brought into contact with a desired position on the tablet **51**, some of electric lines of force generated by a capacitor near the contact position are absorbed by the finger **52**, the capacitance of the electrostatic capacitor located at this portion, and the signal voltage extracted from the portion decreases according to a decrease in the capacitance. With the scanning operation of the X-axis side multiplexer **57** and the Y-axis side multiplexer **58**, the signal voltages output from the Y electrodes **56** (Y_1 to Y_M) are amplified by the first amplification circuit **59**, and the signal voltages from which noise components are removed by the first filter circuit **60** are supplied to the A/D **61**. The A/D **61** converts the input signal voltages into digital signals, and the CPU **62** loads the digital signals. The CPU **62** calculates the Y and X electrodes **56** and **55** each having the smallest signal voltage value on the basis of the loaded digital signals to detect a contact position of the finger **52** on the tablet **51**.

In this manner, when detection for the X- and Y-coordinates of the position where the finger **52** touches on the tablet **51** is made, the CPU **62** sends the detection data to the signal processor **54**. In the signal processor **54**, a cursor corresponding to the contact position of the finger **52** and displayed on the display unit is moved.

When the tablet **51** is operated with the input pen **52**, a generated electrostatic capacitance is absorbed by a hand holding the finger **52** through the input pen **52** to detect the X and Y coordinates of the finger **52** as described above.

In this known coordinate input apparatus, when the coordinate position of the contact portion on the tablet (scanning area) **51** is detected by a coordinate input object such as the input pen **52**, the switches S_1 to S_N of the X-axis side multiplexer **57** are sequentially turned on to scan the X electrodes **55** (X_1 to X_N), and the switches S_1 to S_M of the Y-axis side multiplexer **58** are sequentially turned on to scan the Y electrodes **56** (Y_1 to Y_M). Scan signals used when these scanning operations have specific frequencies, respectively.

In the known coordinate input device, when signal voltages are read from the tablet **51**, external noise is superposed on the read signal voltages. In this case, most of the external noise superposed on the signal voltages is removed by the first filter circuit **60** or a second filter circuit **66**. However, when the external noise frequency is approximate to the frequency of the scan signal, the external noise cannot be removed by the first filter circuit **60** or the second filter circuit **66**, and the signal voltages are input to the A/D **61** and the CPU **62** without removing the external noise from the signal voltages. For this reason, the external noise adversely affects detection of a coordinate position by the CPU **62**, and the reliability of detection of the coordinate position is degraded.

SUMMARY OF THE INVENTION

The present invention has been made to solve the problem, and has as its object to provide a coordinate input device in which when a coordinate position of a contact portion on an operation area by a coordinate input object is to be detected, influence of external noise is minimized to improve the reliability of detection of the coordinate position.

In order to achieve the above object, a coordinate input device according to the present invention comprises means for preparing a plurality of scan signals having frequencies different from those of scan signals for scanning an operation area, sequentially scanning the operation area by the plurality of scan signals, measuring external noise superposed on data output from the operation area each time the scan signals are changed, and then selecting a scan signal on which external noise at the minimum level is superposed to scan the operation area.

According to this means, when data is output from the scanned operation area, the scan signal on which the external noise at the minimum level is superposed can be selected. For this reason, influence of the external noise can be minimized, and the reliability of detection of the coordinate position can be improved.

BRIEF DESCRIPTION OF THE DRAWINGS

FIG. 1 is a block diagram showing a coordinate input device according to an embodiment of the present invention.

FIG. 2 is a development showing an arrangement of a tablet used in the coordinate input device shown in FIG. 1.

FIG. 3 is a flow chart showing the details of an operation performed when the frequencies of scan signals are sequentially updated in the coordinate input device shown in FIG. 1.

FIG. 4 is a block diagram showing a conventional coordinate input device.

DESCRIPTION OF THE PREFERRED EMBODIMENT

According to an embodiment of the present invention, a coordinate input device comprises an operation area scanned by one scan signal selected from a plurality of scan signals having different frequencies, and coordinate data formation means for generating coordinate data representing a coordinate position of a contact portion when a coordinate input object is brought into contact with the operation area, wherein the coordinate data formation means sequentially selects the plurality of scan signals at least once a selecting operation to scan the operation area, measures levels of noise included in data output from the operation area each time the selecting operation is performed, and then uses a scan signal representing a minimum noise level of the measured noise levels to scan the operation area.

At this time, the measured noise levels are stored in a memory in correspondence with the frequencies of the sequentially selected scan signals.

According to this embodiment, the operation area to be scanned by a scan signal is scanned such that a plurality of scan signals having different frequencies are sequentially selected at least once a selecting operation, and, at this time, levels of external noise superposed on data output from the operation area are measured. Thereafter, the operation area is scanned by a scan signal having external noise at the minimum level. For this reason, when the coordinate input

object is brought into contact with the operation area, and the coordinate position of the contact portion is to be detected, influence of the external noise superposed on the coordinate data can be minimized. As a result, the reliability of detection of the coordinate position can be improved.

EMBODIMENT

An embodiment of the present invention will be described below with reference to the accompanying drawings.

FIG. 1 is a block diagram showing a coordinate input device according to an embodiment of the present invention. FIG. 2 is a development showing an arrangement of a tablet used in the coordinate input device shown in FIG. 1.

As shown in FIG. 1, the coordinate input device is constituted by a tablet (operation area) 1, a coordinate input object 2 such as an input pen 2-1 or a finger 2-2 of an operator, a coordinate data generation section 3, and a signal processor 4 such as a personal computer (PC).

The tablet 1, as shown in FIG. 2, is constituted by a film substrate 5, a plurality of (N) parallel X electrodes 6 (X_1 to X_N) formed on the upper surface of the film substrate 5, a plurality of (M) parallel Y electrodes 7 (Y_1 to Y_M) which are adhered to the lower surface of the film substrate 5 and arranged perpendicularly to the X electrodes 6 (X_1 to X_N), a protective film 8 adhered to the upper surface of the film substrate 5, and a shield film 9 adhered to the lower surface of the film substrate 5. The tablet 1 is incorporated in the keyboard of the personal computer to function as a mouse.

The coordinate data generation section 3, as shown in FIG. 1, is constituted by an X-axis side multiplexer 17 having a plurality of (N) switches S_1 to S_N arranged in parallel, a Y-axis side multiplexer 18 having a plurality of (M) switches S_1 to S_M arranged in parallel, a first amplification circuit 19, a first filter circuit 20, an analog/digital converter (A/D) 21, a controller (CPU) 22, an oscillation circuit 23, a first drive selection circuit 24 constituted by a switch, a second drive selection circuit 30, a second amplification circuit 25, a second filter circuit 26, noise level measurement section 27, a scan signal switching section 28, and a memory 29. In this case, the noise level measurement section 27 measures the noise amount and noise level (the maximum value of the noise amount—the minimum value of the noise amount) of external noise superposed on a digital signal supplied to the filter constant setting section 22, and the scan signal switching section 28 switches a scan signal output from the CPU 22 to signals having a plurality of frequencies, e.g., any one of first to eighth scan signals having frequencies f1 to f8. The memory 29 stores the noise levels measured by the noise level measurement section 27 in correspondence with the frequencies f1 to f8 when the scan signal is switched to the first to eighth scan signals. In the coordinate data generation section 3, the first and second drive selection circuits 24 and 30 are added, and the noise level measurement section 27, the scan signal switching section 28, and the memory 29 are connected to the CPU 22.

An operation of the coordinate input device according to this embodiment with the above arrangement will be described below.

In the coordinate input device according to this embodiment, the frequency of a scan signal for turning on all the switches S_1 to S_N of the X-axis side multiplexer 17 on to scan the X electrodes 6 (X_1 to X_N) of the tablet 1 is set, and the switches S_1 to S_M of the Y-axis side multiplexer 18 are sequentially turned on. The frequency of a scan signal for turning on all the switches S_1 to S_M of the Y-axis side multiplexer 18 to scan the Y electrodes 7 (Y_1 to Y_M) of the

tablet 1 is set to be equal to the frequency of the scan signal for the X axis, and the switches S_1 to S_N of the X-axis side multiplexer 17 are sequentially turned on.

More specifically, the oscillation circuit 23 outputs a scan signal having a frequency determined by a control signal from the CPU 22, and outputs the scan signal to the X-axis side multiplexer 17 first. In this case, the amplification circuit 25 is in an OFF state by a switching operation of the first drive selection circuit 24.

On the other hand, connection from the oscillation circuit 23 is turned off by the second drive selection circuit 30, and the first amplification circuit 19 is connected to the Y-axis side multiplexer 18.

In the X-axis side multiplexer 17, the switches S_1 to S_N are sequentially turned on by a control signal from the CPU 22, and a voltage is extracted to the amplification circuit 19.

The first drive selection circuit 24 is turned off by a control signal from the CPU 22 together with the oscillation circuit 23, and the X-axis side multiplexer 17 and the amplification circuit 25 are connected to each other. The second drive selection circuit 30 is connected to the oscillation circuit 23 and outputs a scan signal from the oscillation circuit 23 to the Y-axis side multiplexer 18. The Y-axis side multiplexer 18 and the amplification circuit 19 are turned off.

Here, an operation performed in a case wherein the frequencies of scan signals for scanning the X electrodes 6 (X_1 to X_N) and/or the frequencies of scan signals for scanning the Y electrodes 7 (Y_1 to Y_M) are sequentially changed will be described below with reference to the flow chart shown in FIG. 3, i.e., the flow chart showing the details of an operation performed when the frequencies of scan signals are sequentially changed in the coordinate input device according to this embodiment.

In step S1, the CPU 22 generates, of the first to eighth scan signals which can be generated, one scan signal having a minimum noise level in previous noise level measurement, e.g., the first scan signal, and sequentially turns on the switches S_1 to S_N of the X-axis side multiplexer 17 to scan the X electrodes 6 (X_1 to X_N) of the tablet 1.

In step S2, signal voltages obtained at the Y electrodes 7 (Y_1 to Y_M) of the tablet 1 are sequentially extracted through the Y-axis side multiplexer 18 whether the tablet 1 is operated by the input pen 2-1 or not. The signal voltages are amplified by the first amplification circuit 19, and the noise component of the signal voltages are removed by the first filter circuit 20. The signal voltages are converted into digital signals by the A/D 21. The resultant digital signals are loaded on the CPU 22.

In step S3, the CPU 22 measures the X coordinate of the tablet 1 on the basis of the loaded digital signals.

In step S4, the CPU 22 measures the Y coordinate of the tablet 1 on the basis of the loaded digital signals.

In step S5, on the basis of the loaded digital signals, the CPU 22 measures a Z coordinate representing that the input pen 2-1 is close to or brought into contact with the tablet 1.

In step S6, the CPU 22 supplies the loaded digital signals to the noise level measurement section 27 to measure an amount of external noise superposed on the digital signals.

Subsequently, in step S7, the CPU 22 checks whether the Z coordinate measured in step S5 exceeds a threshold value, i.e., whether the input pen 2-1 is close to or brought into contact with the tablet 1. If it is determined that the Z coordinate does not exceed the threshold value (N), the flow shifts to next step S8. If it is determined that the Z coordinate exceeds the threshold value (Y), the flow shifts to other step S9.

In step S8, the CPU 22 drives the scan signal switching section 28 to generate one scan signal having a minimum noise level in the previous noise level measurement, e.g., the second scan signal, as a scan signal for sequentially turning on the switches S_1 to S_N of the X-axis side multiplexer 17. Thereafter, the CPU 22 sequentially turns on the switches S_1 to S_N of the X-axis side multiplexer 17 to scan the X electrodes 6 (X_1 to X_N) of the tablet 1.

In step S9, the CPU 22 supplies the loaded digital signals to the noise level measurement section 27 and measures a noise level in the scan signal, i.e., a noise level obtained by subtracting the minimum noise level from the maximum noise level.

In step S10, the CPU 22 checks whether the number of measurements of noise levels in step S9, i.e., a measurement count is equal to the total number (8) of the first to eighth scan signals. If it is determined that the measurement count is equal to 8 (Y), the flow shifts to step S11. If it is determined that the measurement count is not equal to 8 (N), the flow returns to the first step (step S1) to execute the processes in steps following step S1 again.

In step S11, on the basis of the digital signals supplied to the noise level measurement section 27, the CPU 22 temporarily stores noise levels in a scanning operation (sequential change cycles of previous scan signals) by the previous first to eighth scan signals measured by the noise level measurement section 27 in a temporary storage section of the memory 29 in correspondence with the frequencies f1 to f8 of the first to eighth scan signals.

In step S12, the CPU 22 converts the noise levels in the sequential change cycles of the previous scan signals temporarily stored in the temporary storage section of the memory 29 are converted into noise levels in sequential change cycles of current scan signals.

Subsequently, in step S13, the CPU 22 causes sequential change cycles of scan signals for sequentially changing the scan signals of the X-axis side multiplexer 17 to shift from sequential change cycles of the current scan signals to sequential change cycles of the next scan signals.

In step S14, the CPU 22 sets the number of measurements of noise levels, i.e., a measurement count, to be 0 at step S9. Upon completion of this setting, the flow returns to step S1 to execute the processes in steps following step S1 again.

In step S15, the CPU 22 selects one scan signal having the minimum noise level in the previous stage, e.g., the second scan signal, and sequentially turns on the switches S_1 to S_N of the X-axis side multiplexer 17 by the second scan signal. In this state, when the CPU 22 scans the X electrodes 6 (X_1 to X_N) of the tablet 1, the CPU 22 checks whether the Z coordinate exceeds the threshold value once (or 0 times). If it is determined that the Z coordinate exceeds the threshold value once (Y), the flow shifts to next step S16. If it is determined that the Z coordinate exceeds the threshold value 0 times (N), the flow returns to the first step, i.e., step S1, to execute the processes in steps following step S1 again.

In step S16, the CPU 22 supplies the digital signals to the noise level measurement section 27 to measure a current noise level. If the measurement index of the noise level at this time is worst, i.e., 255 (0 is the best, the measurement index becomes worse with an increase in integer value, and 255 is worst) or is approximate to 255, the flow immediately shifts to next step S17.

In step S17, the CPU 22 drives the scan signal switching section 28 to generate another scan signal, e.g., the third scan signal, in place of one scan signal selectively generated in step S8, e.g., the second scan signal, as a scan signal for

sequentially turning on the switches S_1 to S_N of the X-axis side multiplexer 17. When the third scan signal is generated, the flow returns to step S1 to execute the processes in steps following step S1 again.

In this manner, according to this embodiment, when the tablet (operation area) 1 is to be scanned by a scan signal, a plurality of scan signals having different frequencies are sequentially selected at least once a selecting operation as scan signals, levels of external noise superposed on data output from the tablet 1 in a scanning operation by the selected scan signal are measured. Thereafter, the tablet 1 is scanned by a scan signal having external noise at the minimum level. For this reason, when the coordinate input object 2 is brought into contact with the tablet 1, and the coordinate position of the contact portion is to be detected, influence of the external noise superposed on the coordinate data can be minimized. As a result, the reliability of detection of the coordinate position can be improved.

The above embodiment has been described by using a case wherein 8 scan signals, i.e., the first to eighth scan signals are used. However, the total number of scan signals is not limited to 8, and a number other than 8 may be selected as the total number of scan signals as a matter of course.

As has been described above, according to the present invention, when an operation area is to be scanned by a scan signal, a plurality of scan signals having different frequencies are sequentially selected at least once a selecting operation as scan signals, the operation area is scanned by

the selected scan signal to obtain data, and the level of external noise superposed on the obtained data is measured. Thereafter, the operation area is scanned by a scan signal having external noise at the minimum level. For this reason, when the coordinate input object is brought into contact with the operation area, and the coordinate position of the contact portion is to be detected, influence of the external noise superposed on the coordinate data can be minimized. As a result, the reliability of detection of the coordinate position can be advantageously improved.

What is claimed is:

1. A coordinate input device comprising an operation area scanned by one scan signal selected from a plurality of scan signals having different frequencies, and coordinate data formation means for generating coordinate data representing a coordinate position of a contact portion when a coordinate input object is brought into contact with said operation area, characterized in that said coordinate data formation means sequentially selects the plurality of scan signals at least once a selecting operation to scan said operation area, measures levels of noise included in data output from said operation area each time the selecting operation is performed, and then uses a scan signal representing a minimum noise level of the measured noise levels to scan said operation area.

2. A coordinate input device according to claim 1, characterized in that the measured noise levels are stored in a memory in correspondence with the frequencies of the sequentially selected scan signals.

* * * * *