



US006816878B1

(12) **United States Patent**
Zimmers et al.

(10) **Patent No.:** **US 6,816,878 B1**

(45) **Date of Patent:** **Nov. 9, 2004**

(54) **ALERT NOTIFICATION SYSTEM**

(76) Inventors: **Steven L. Zimmers**, 710 Clinton
Springs Ave., Cincinnati, OH (US)
45229; **Daniel W. Davis**, 45229 1602
Berry Farm Rd., Lithia, FL (US) 33547

(*) Notice: Subject to any disclaimer, the term of this
patent is extended or adjusted under 35
U.S.C. 154(b) by 0 days.

(21) Appl. No.: **09/503,141**

(22) Filed: **Feb. 11, 2000**

(51) Int. Cl.⁷ **G08B 21/00**

(52) U.S. Cl. **709/200; 709/206; 709/217;**
709/218; 340/540

(58) Field of Search **709/200, 217,**
709/218

(56) **References Cited**

U.S. PATENT DOCUMENTS

3,595,999 A	7/1971	Cole	179/6 D
4,219,698 A	8/1980	Birilli et al.	179/5 P
4,371,751 A	2/1983	Hilligoss, Jr. et al.	179/5 R
4,811,382 A	3/1989	Sleeve	379/67
5,034,916 A *	7/1991	Ordish	709/204
5,121,430 A *	6/1992	Ganzer et al.	380/258
5,260,986 A *	11/1993	Pershan	455/413
5,515,421 A	5/1996	Sikand et al.	379/67
5,528,674 A	6/1996	Reiss, III	379/102
5,539,809 A *	7/1996	Mayer et al.	379/210.02
5,541,980 A	7/1996	Urewicz	379/61
5,559,867 A	9/1996	Langenkamp et al.	379/69
5,663,734 A	9/1997	Krasner	342/357
5,825,283 A *	10/1998	Camhi	340/438
5,880,770 A	3/1999	Ilcisin et al.	348/14
5,910,763 A *	6/1999	Flanagan	340/286.02
5,912,947 A *	6/1999	Langenkamp et al.	379/69
5,923,733 A	7/1999	Binns et al.	379/88.23
5,949,851 A	9/1999	Mahaffey	379/48
6,018,699 A *	1/2000	Baron et al.	702/3
6,021,177 A	2/2000	Allport	379/48
6,169,476 B1 *	1/2001	Flanagan	340/286.02
6,275,774 B1	8/2001	Baron, Sr. et al.	702/3
6,295,346 B1 *	9/2001	Markowitz et al.	379/127.01
6,304,816 B1 *	10/2001	Berstis	701/117

6,346,890 B1 *	2/2002	Bellin	340/825.52
6,463,462 B1	10/2002	Smith et al.	709/206
6,487,495 B1 *	11/2002	Gale et al.	701/209
6,490,525 B2	12/2002	Baron, Sr. et al.	702/3
6,493,633 B2	12/2002	Baron, Sr. et al.	702/3
6,523,038 B1 *	2/2003	Iida et al.	707/100
6,594,345 B1	7/2003	Vinson	379/48

OTHER PUBLICATIONS

Auerbach, *Automatic Telephone Notification of Locations in a Tornado Path*, U.S. Patent Publication 2001/0052847
Published Dec. 20, 2001.

Auerbach, Mitchell J., *Emergency Management Communi-
cations System*, Provisional Application 60/111,281 filed
Dec. 7, 1998.

Auerbach, Mitchell J., *Emergency Management Communi-
cations System*, Provisional Application 60/120,096 filed
Feb. 16, 1999.

* cited by examiner

Primary Examiner—Rupal Dharia

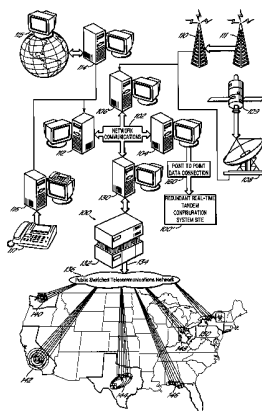
Assistant Examiner—April L. Baugh

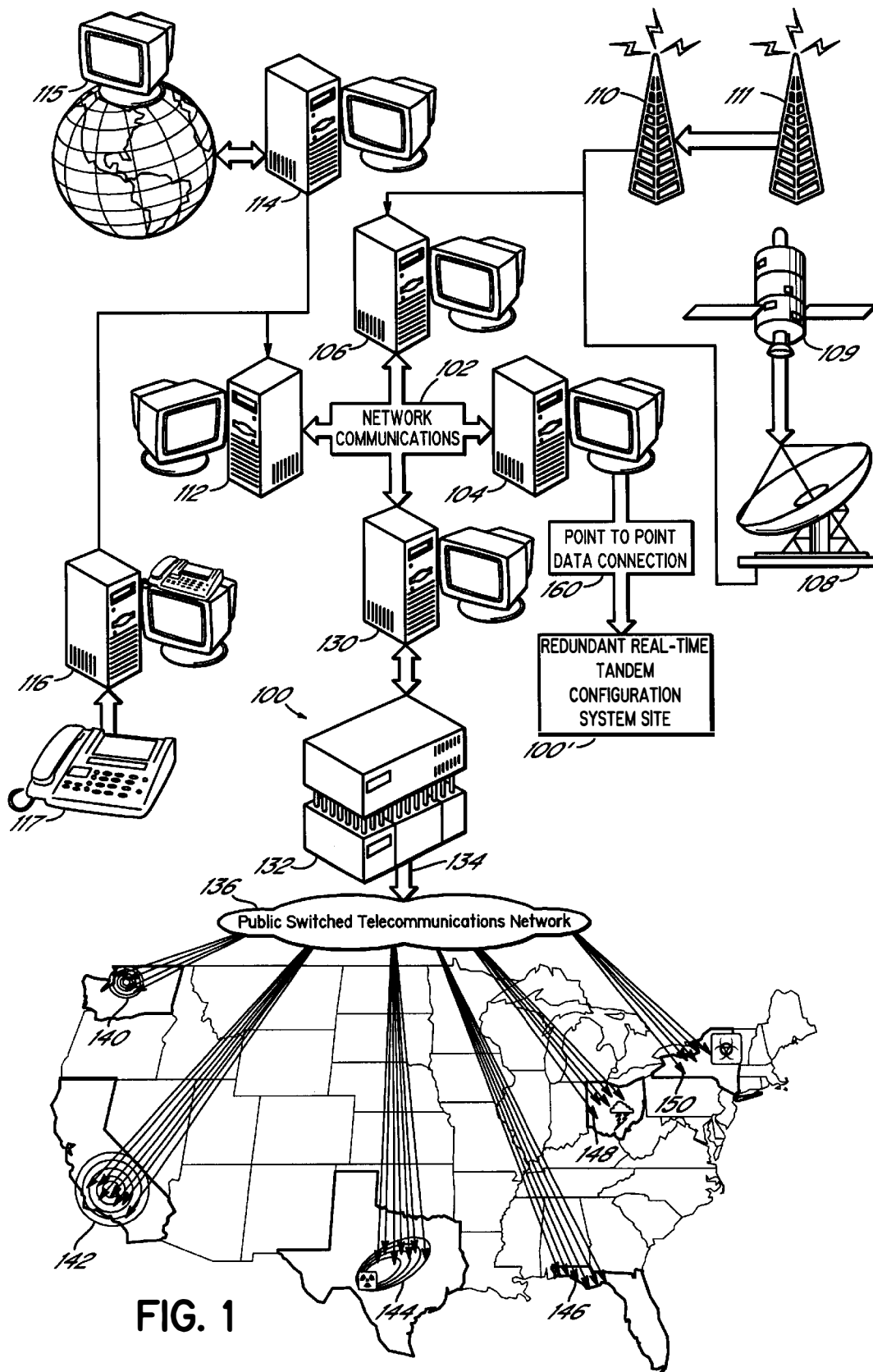
(74) *Attorney, Agent, or Firm*—Wood, Herron & Evans,
LLP

(57) **ABSTRACT**

Asystem for providing alert notifications to multiple persons
or to a plurality of related geographic locations. The system
stores a database of information including a plurality of
communications identifiers and additional information for
subscribers having those identifiers, including geographic
locations and/or school/organization membership informa-
tion. The system responds to commands identifying alerts to
be delivered to affected geographic areas or schools/
organizations, by retrieving communications identifiers in
the threatened geographic location or associated with the
named school/organization, establishing a communications
connection using each retrieved communication identifier,
and delivering the alert. Alerts may be initiated by autho-
rized personnel via telephone or Internet interaction with the
system, or may be generated automatically from data feeds
such as the EMWIN system of the National Weather Service.
Alerts may be delivered via telephone, pager (voice or text),
e-mail, Internet, or other media.

227 Claims, 24 Drawing Sheets





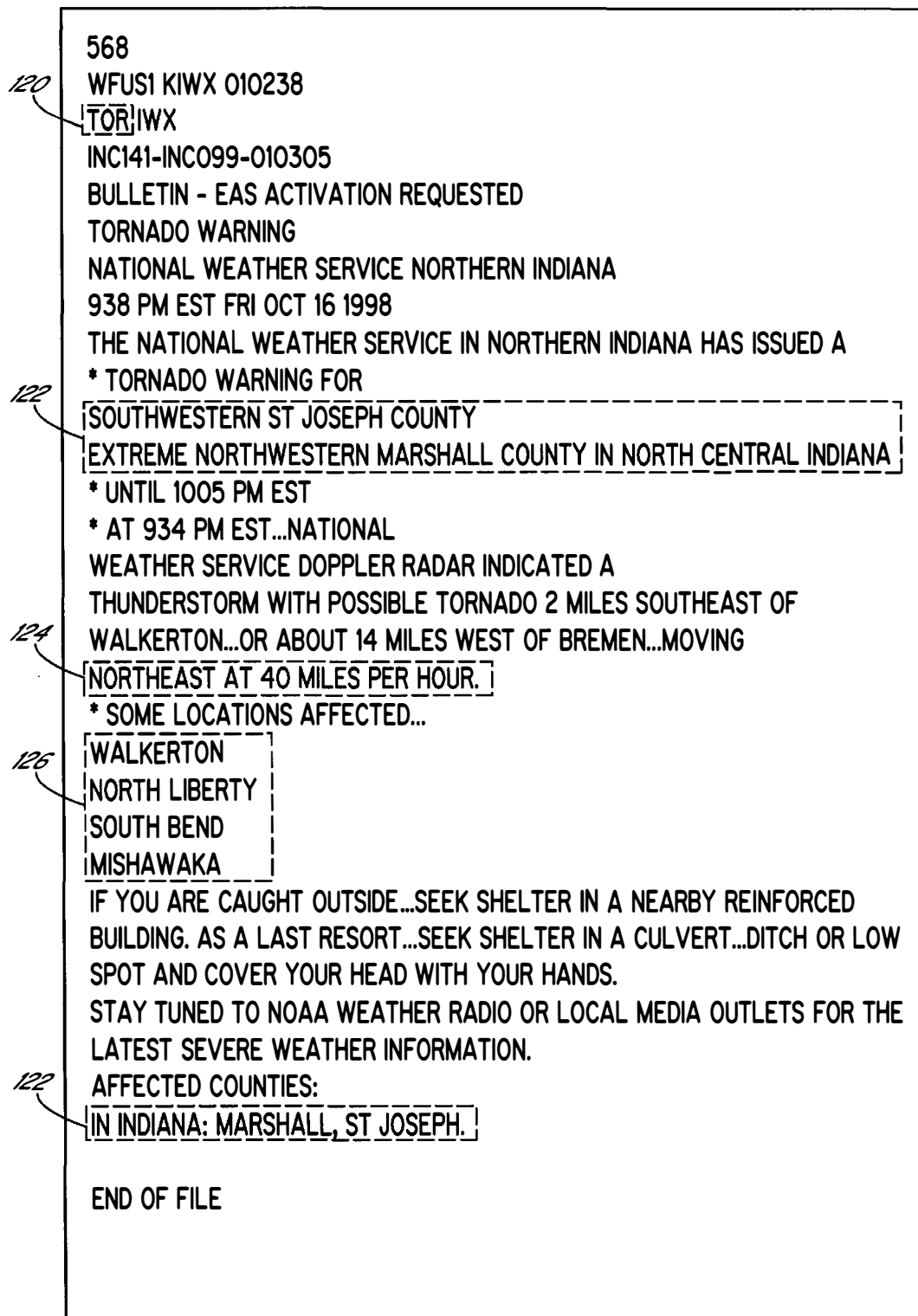


FIG. 2

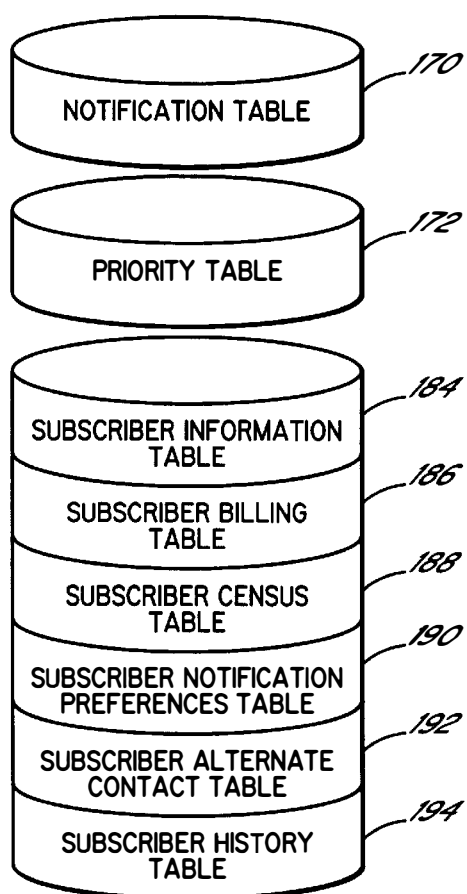


FIG. 3

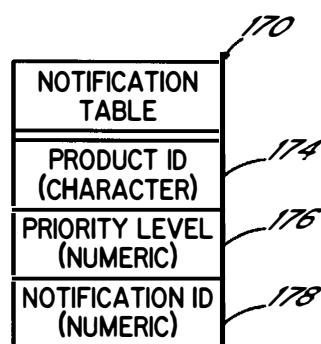


FIG. 3A

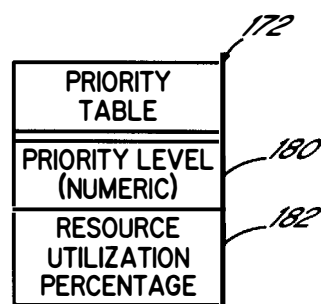


FIG. 3B

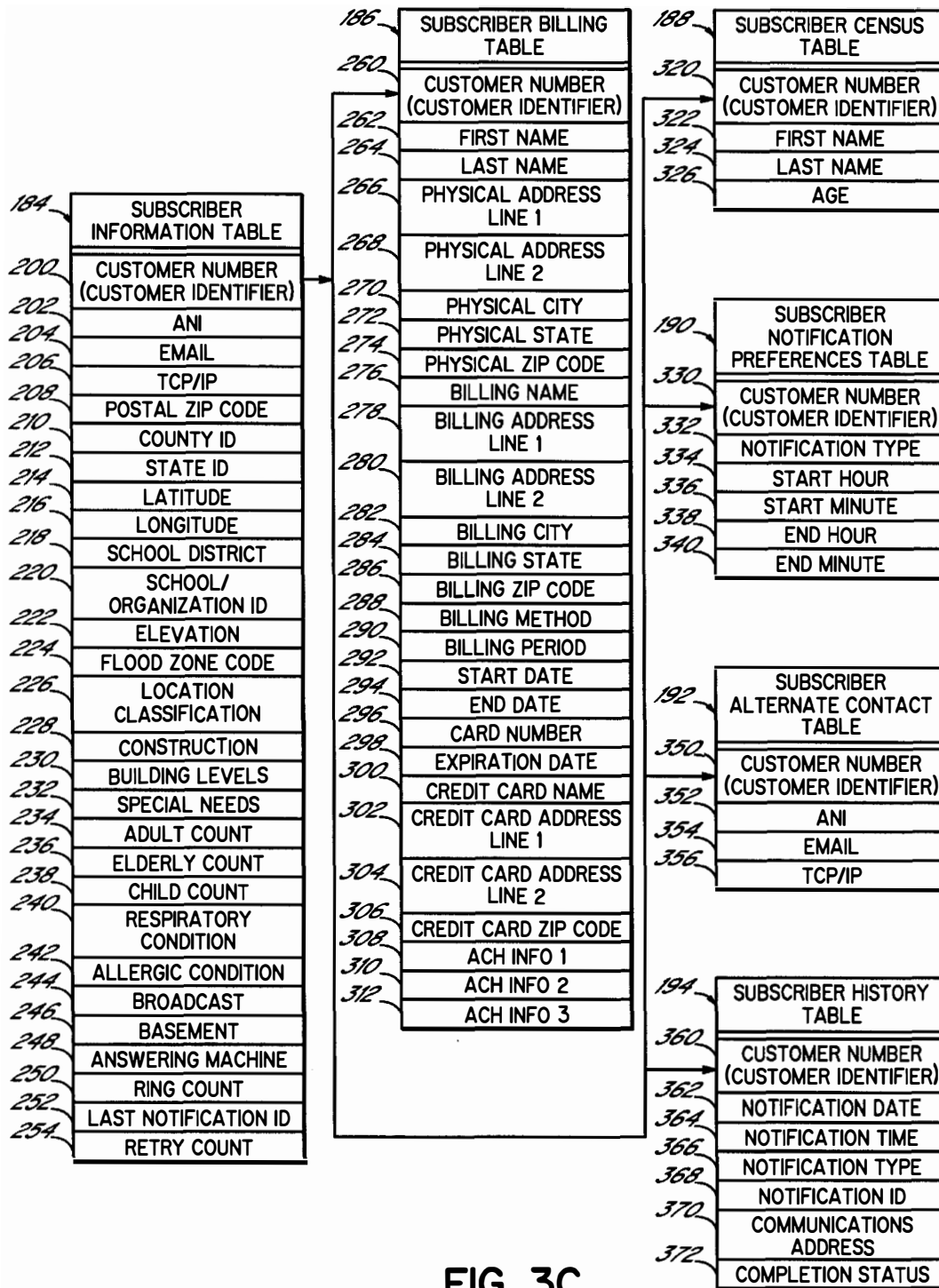


FIG. 3C

FIG. 4A

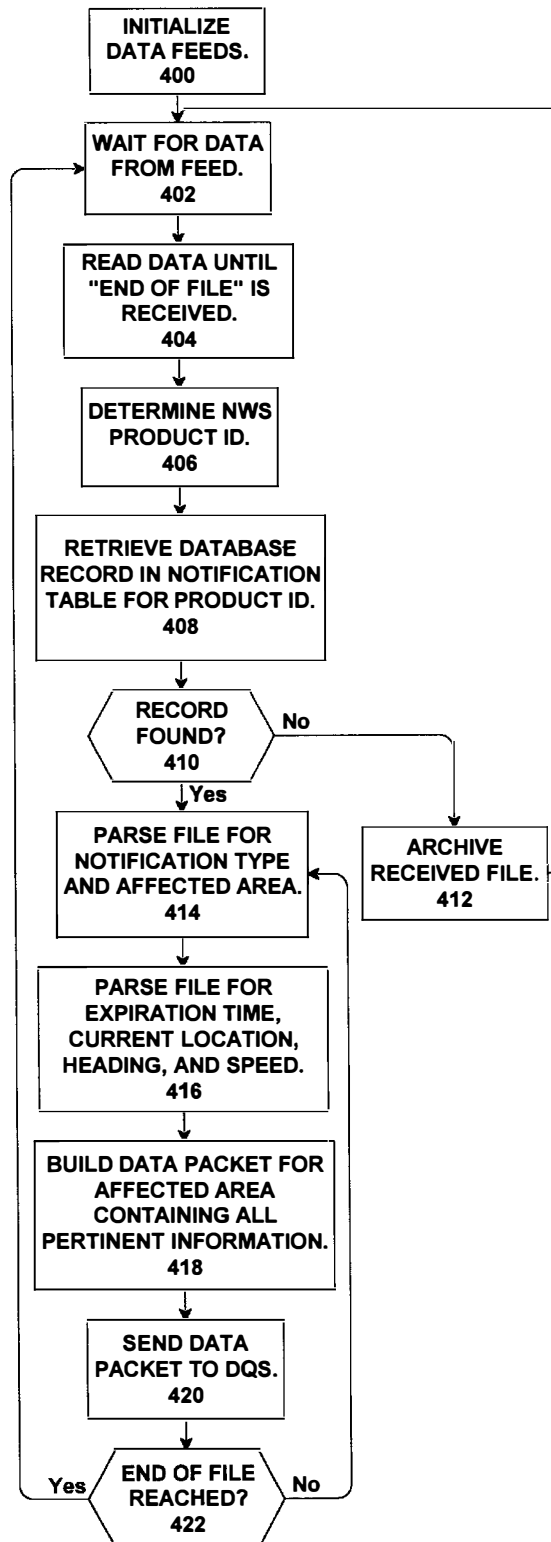


FIG. 4B

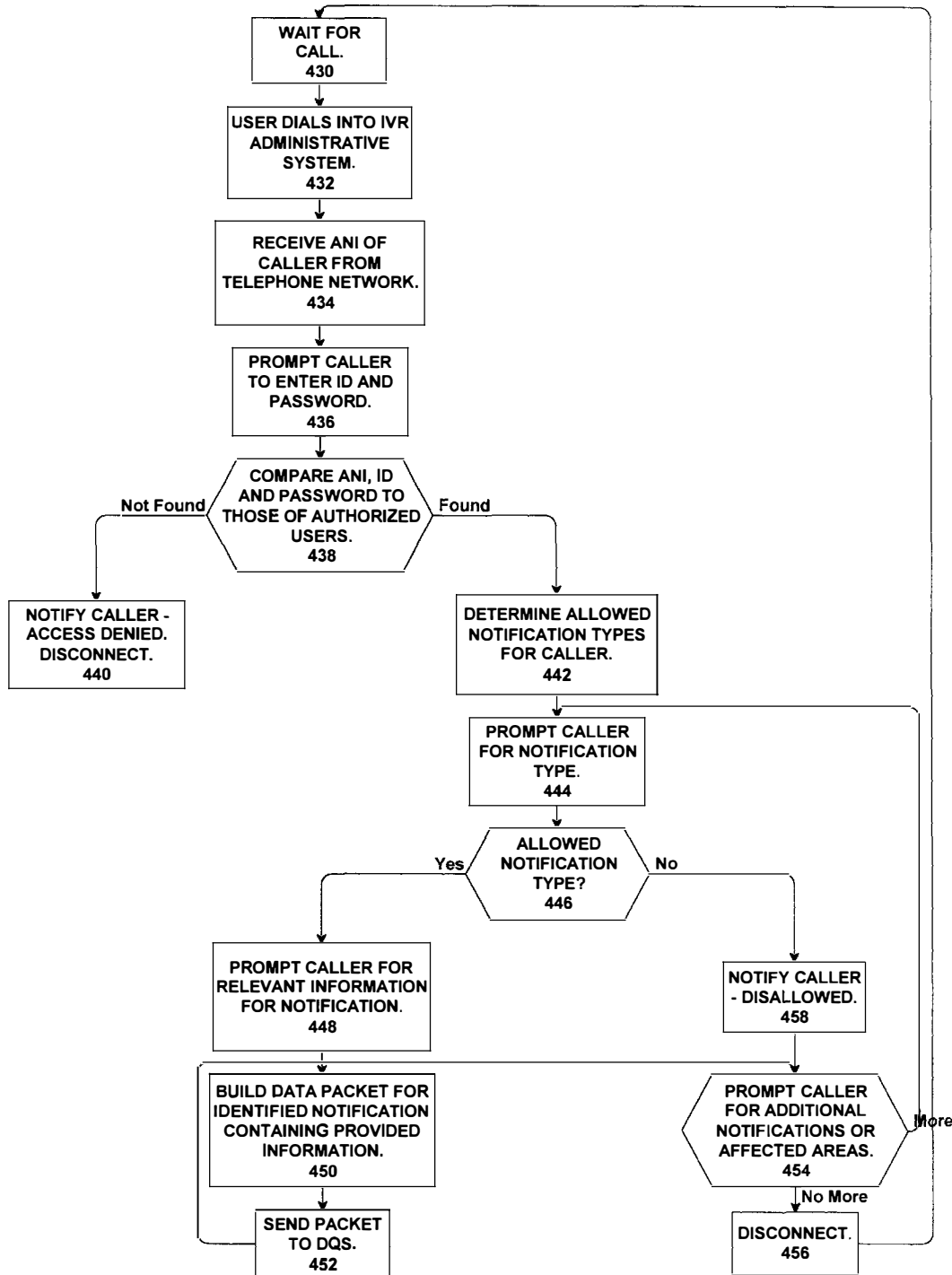


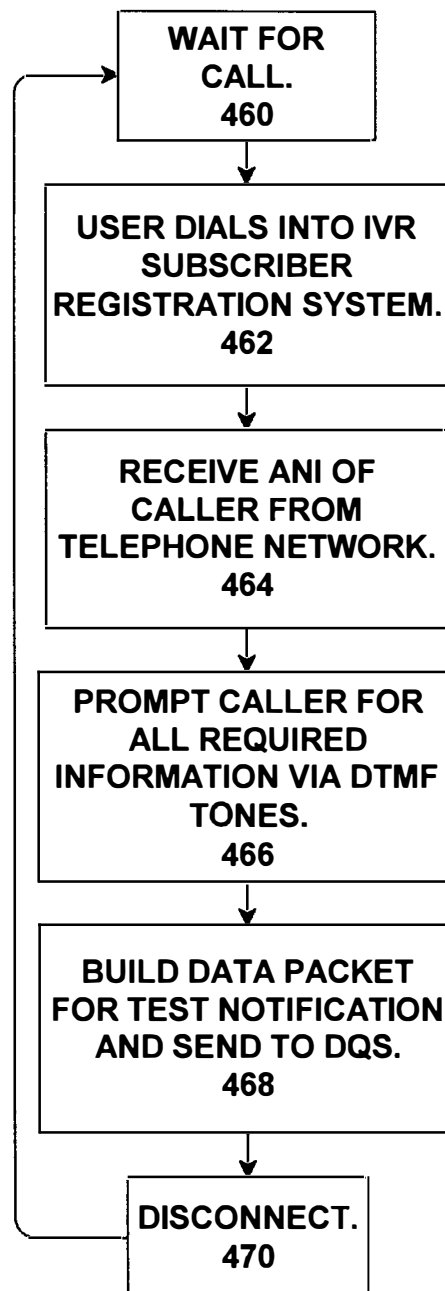
FIG. 4C

FIG. 4D

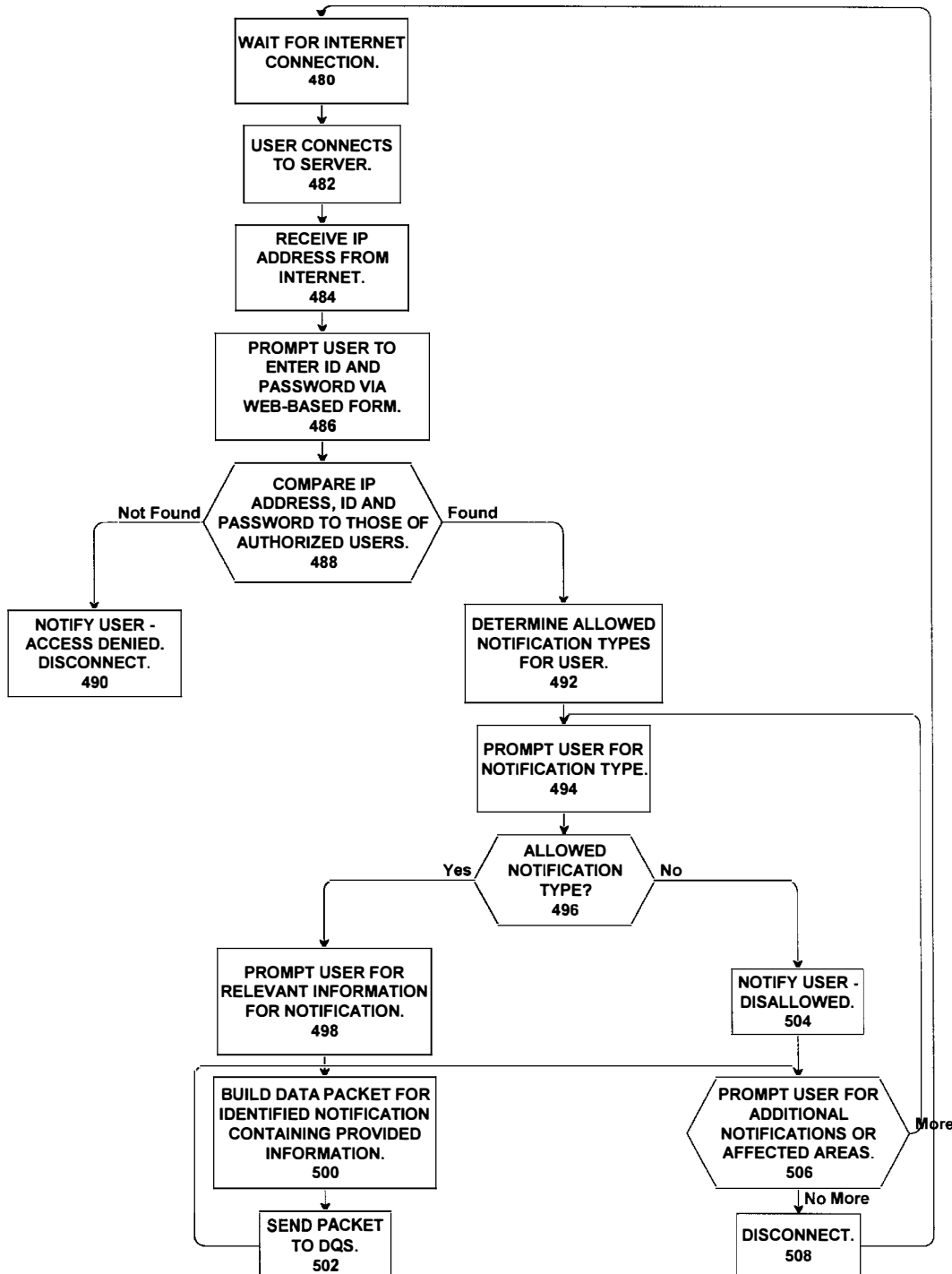


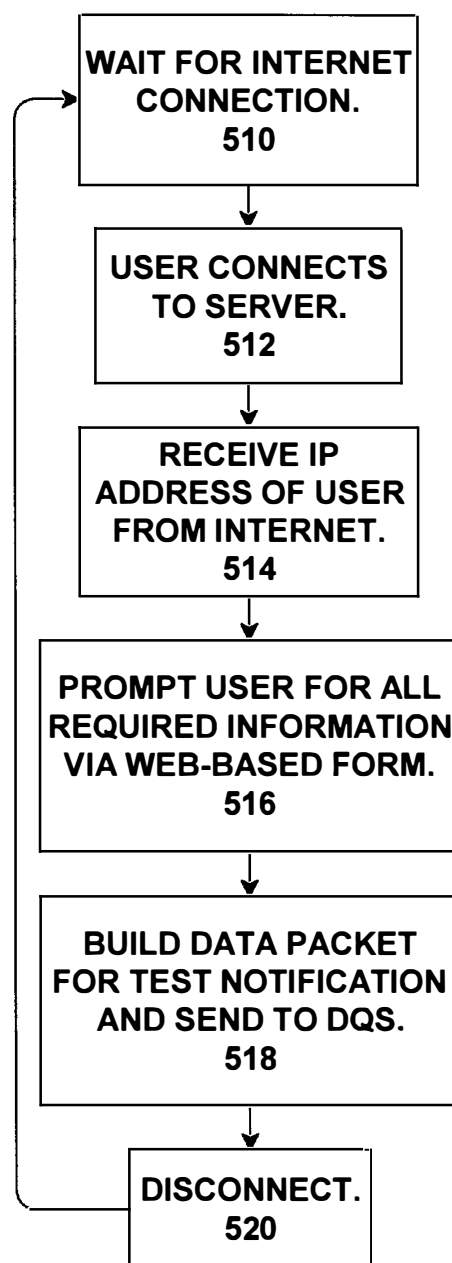
FIG. 4E

FIG. 4F

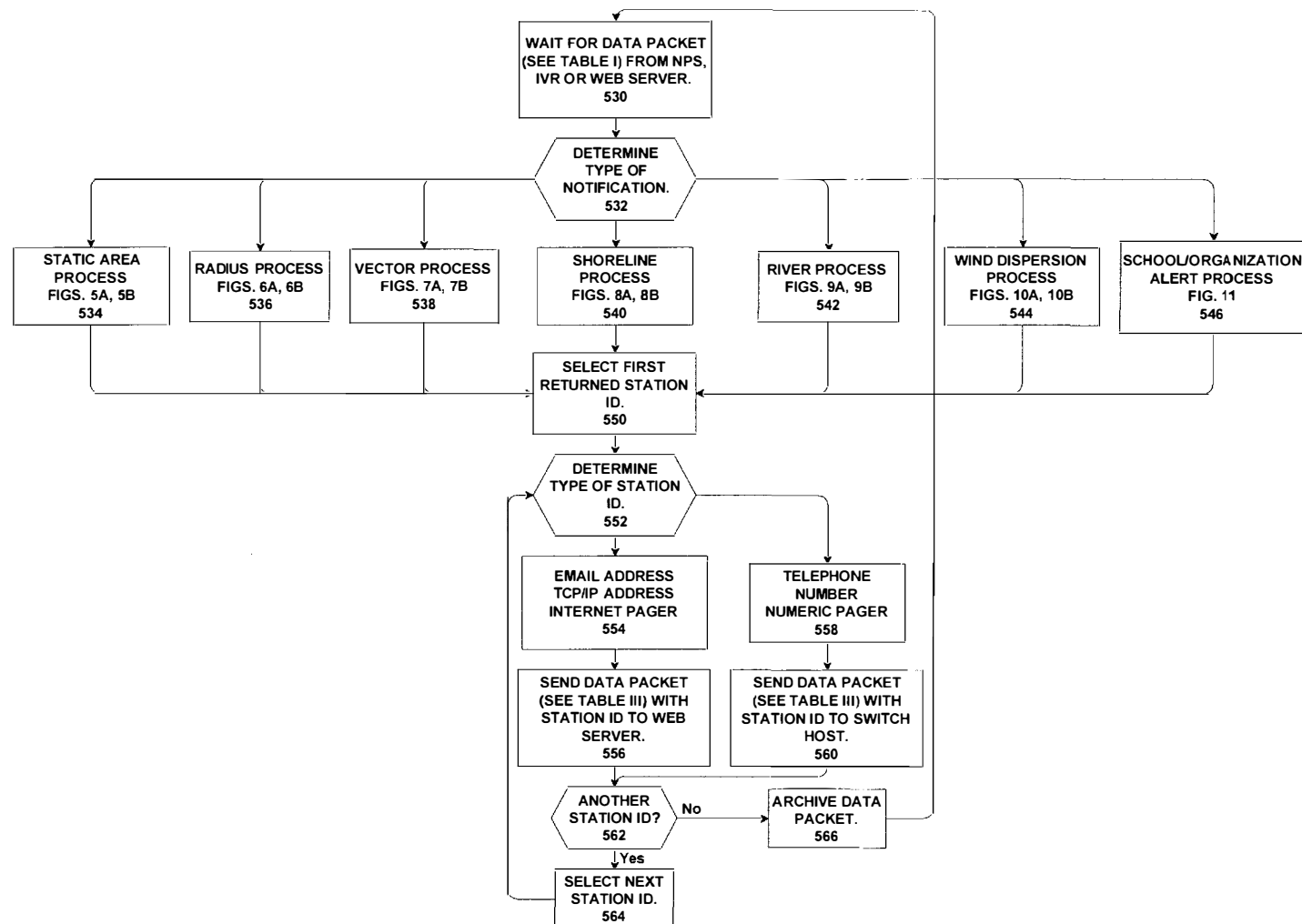


FIG. 4G

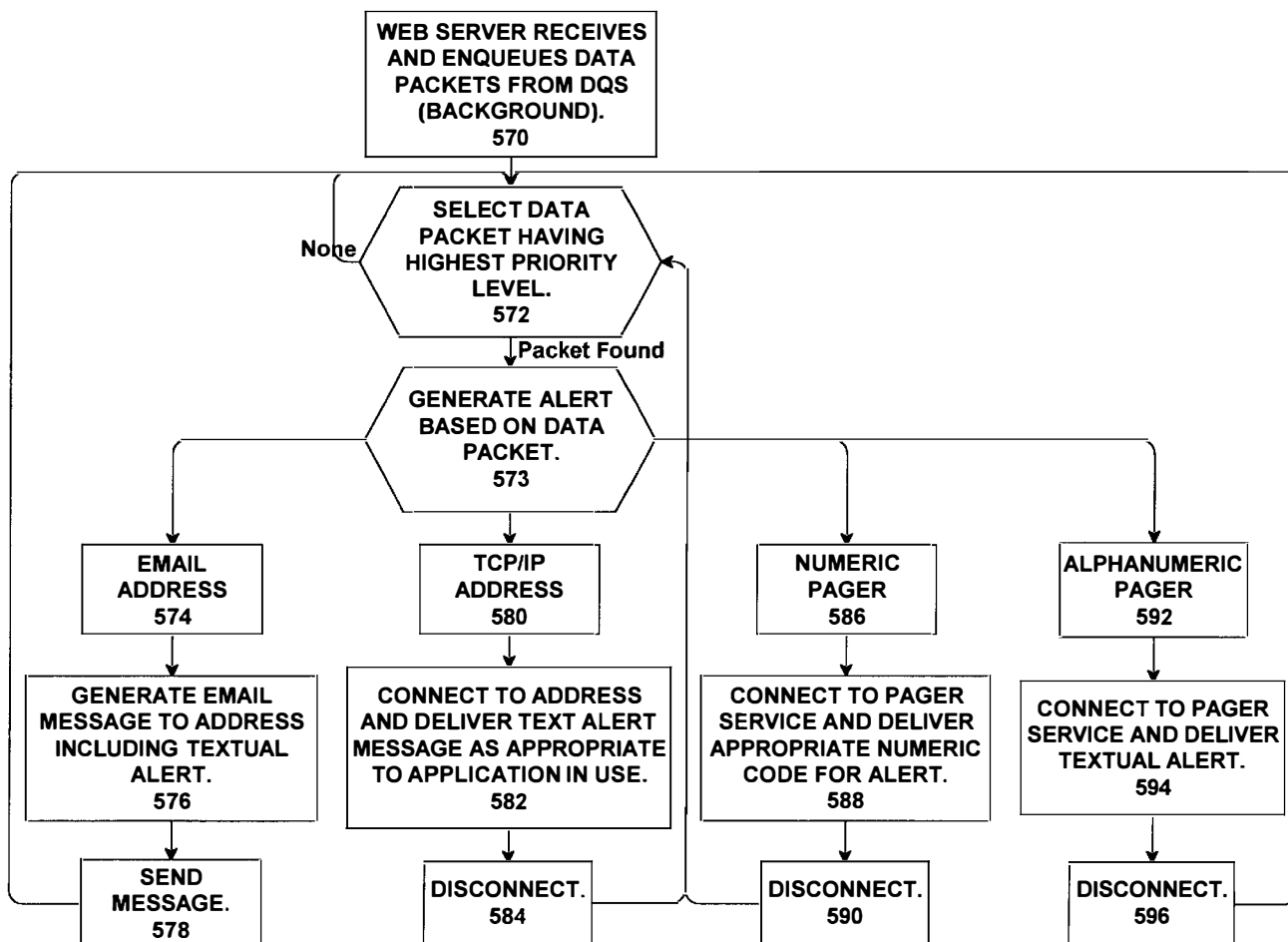
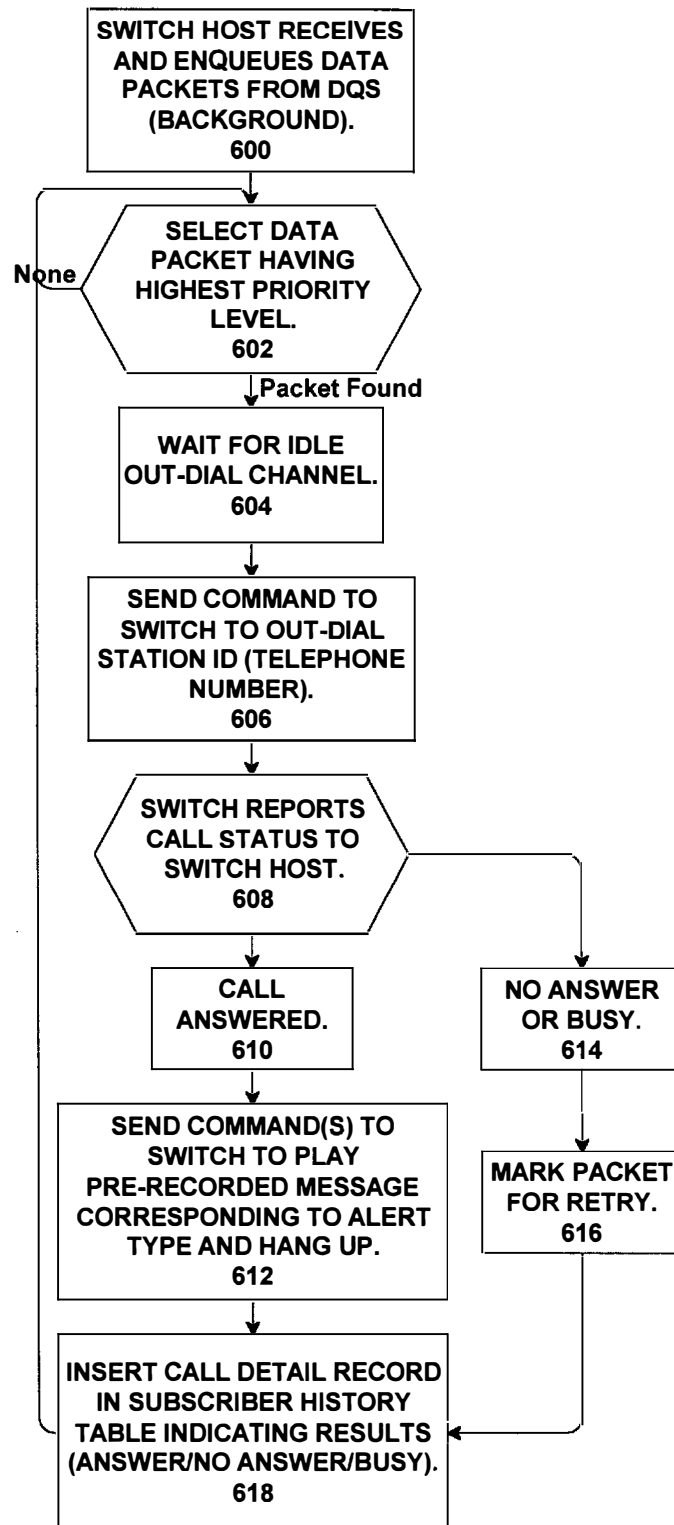


FIG. 4H



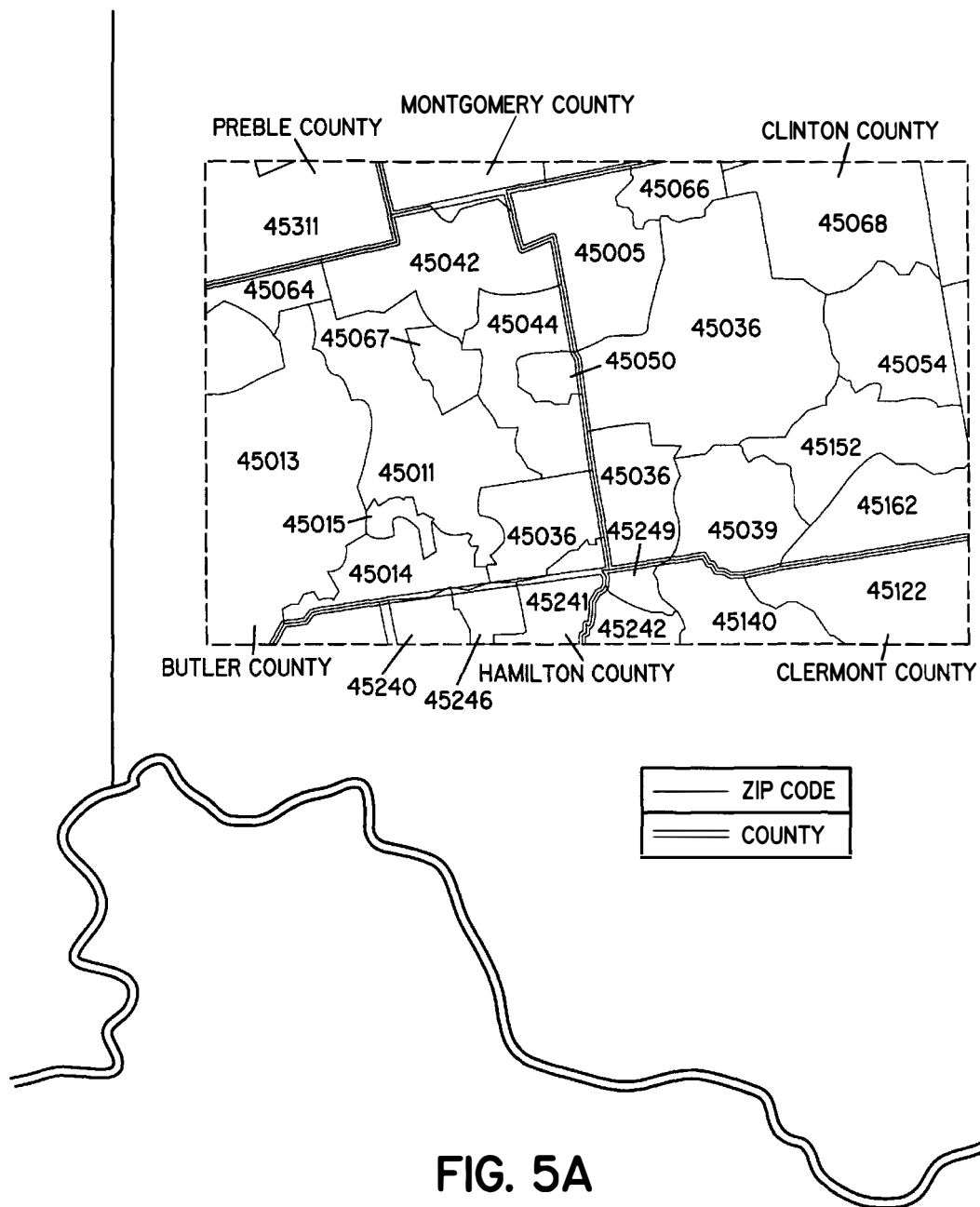
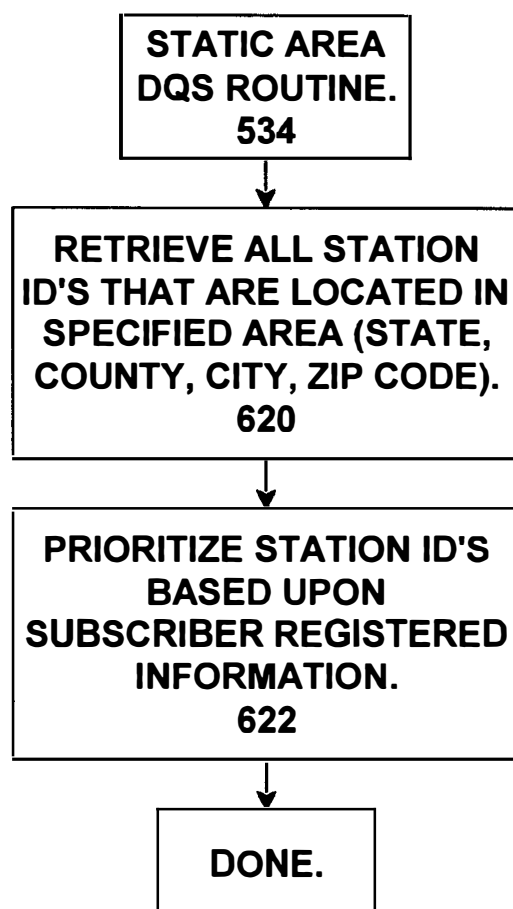


FIG. 5B

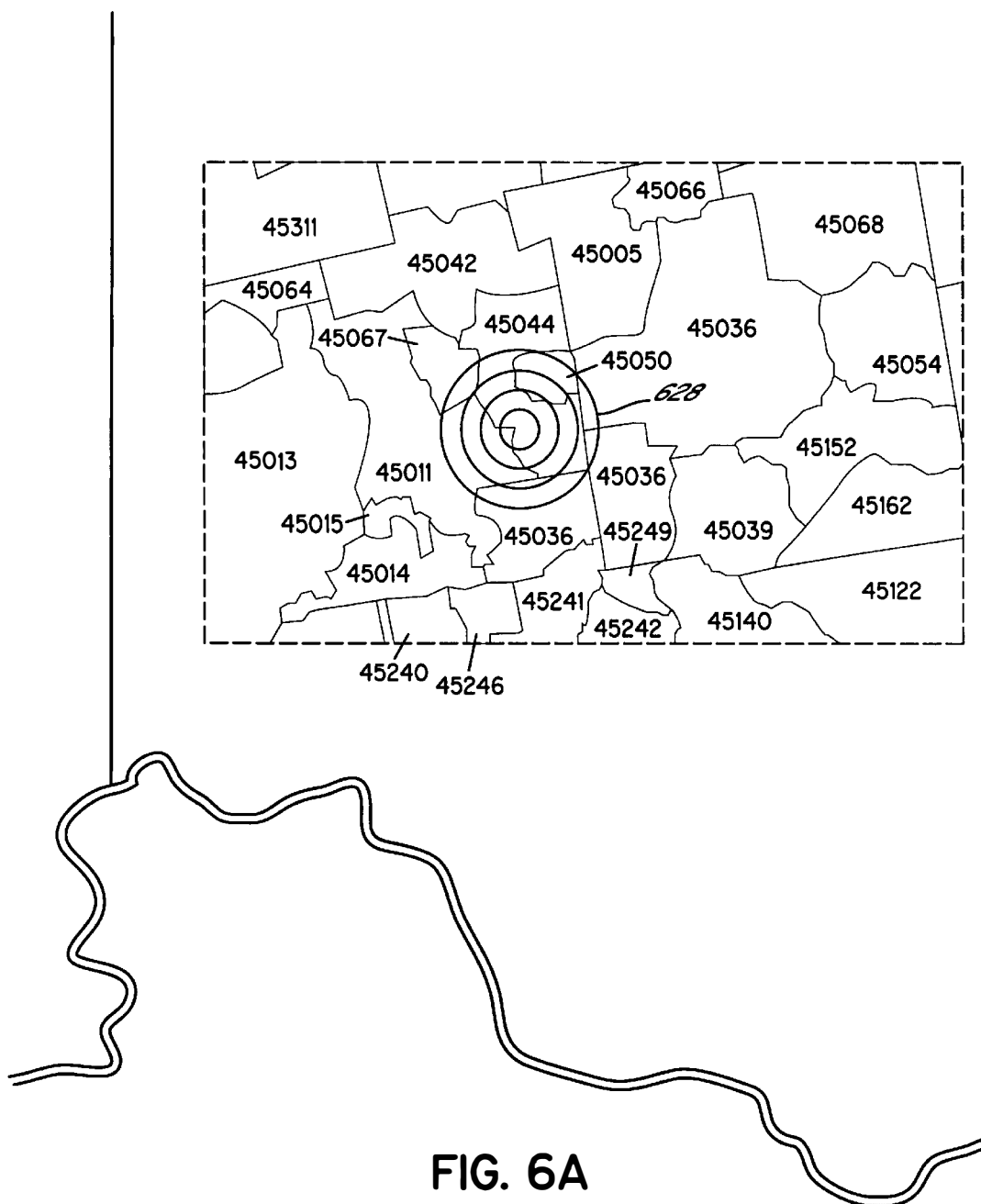
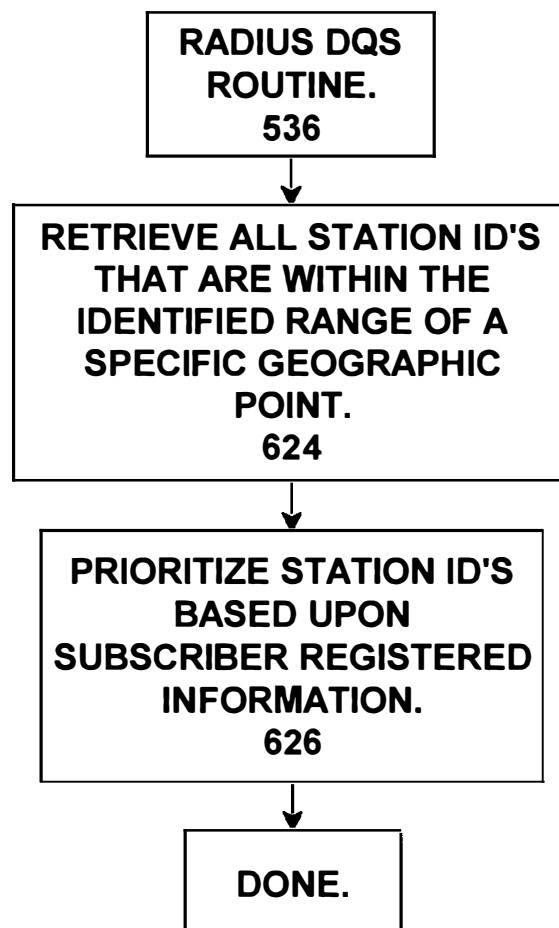


FIG. 6B

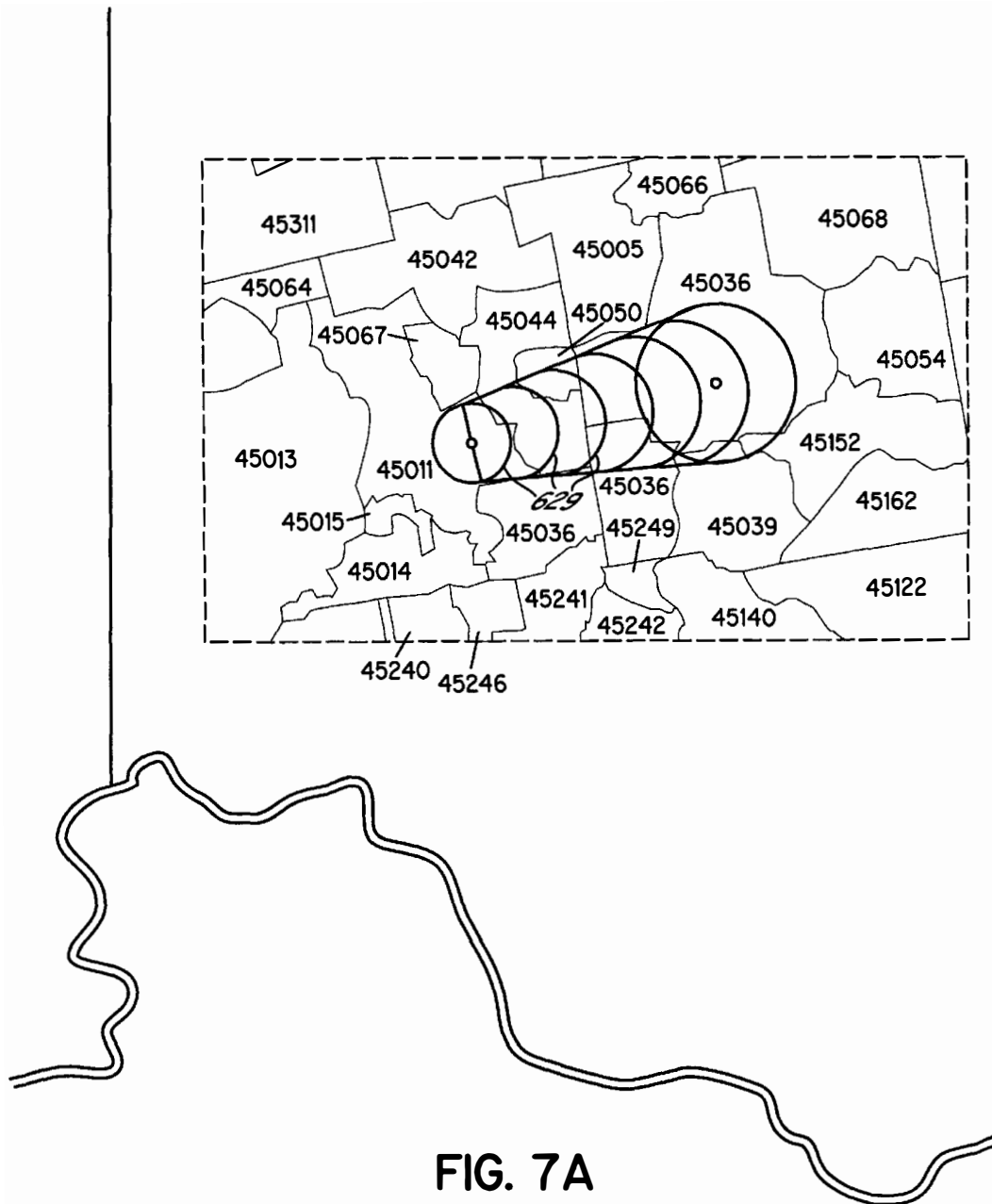
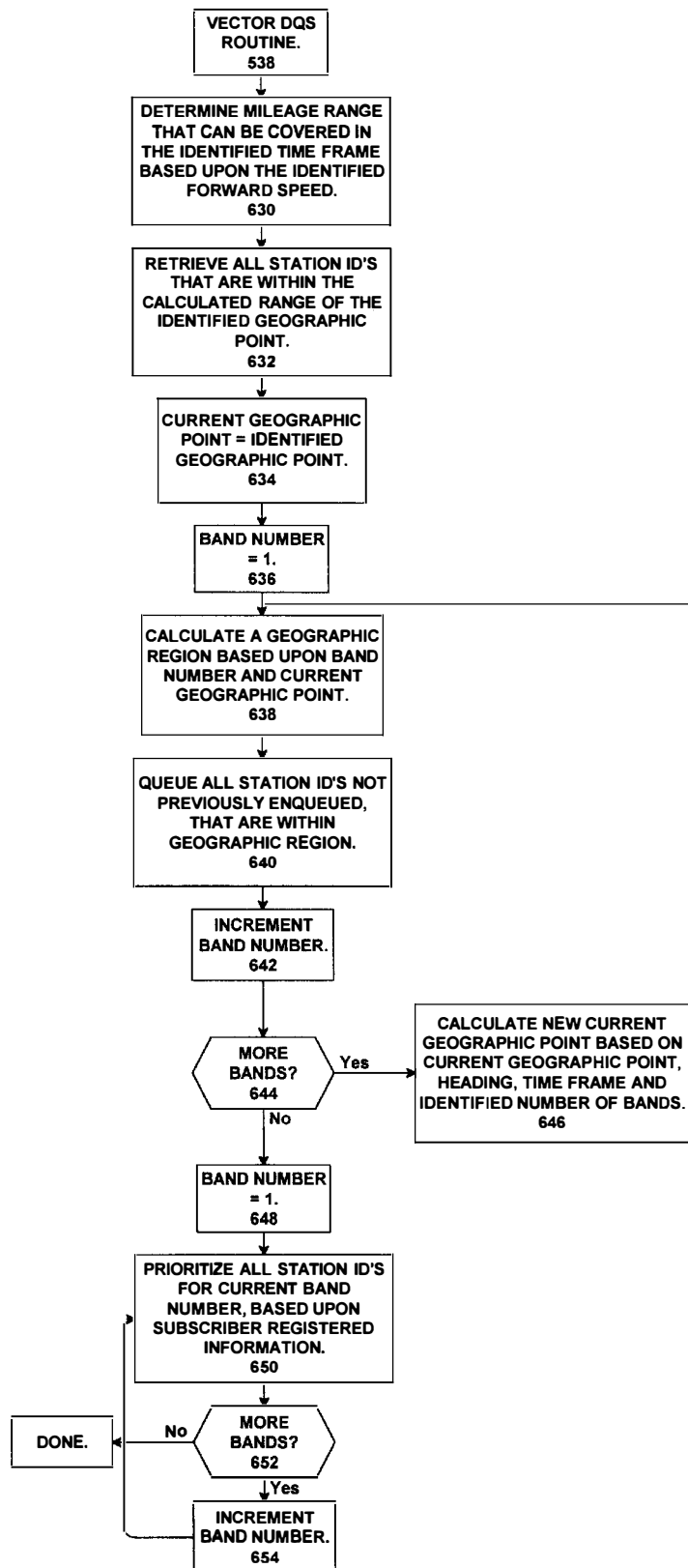


FIG. 7A

FIG. 7B



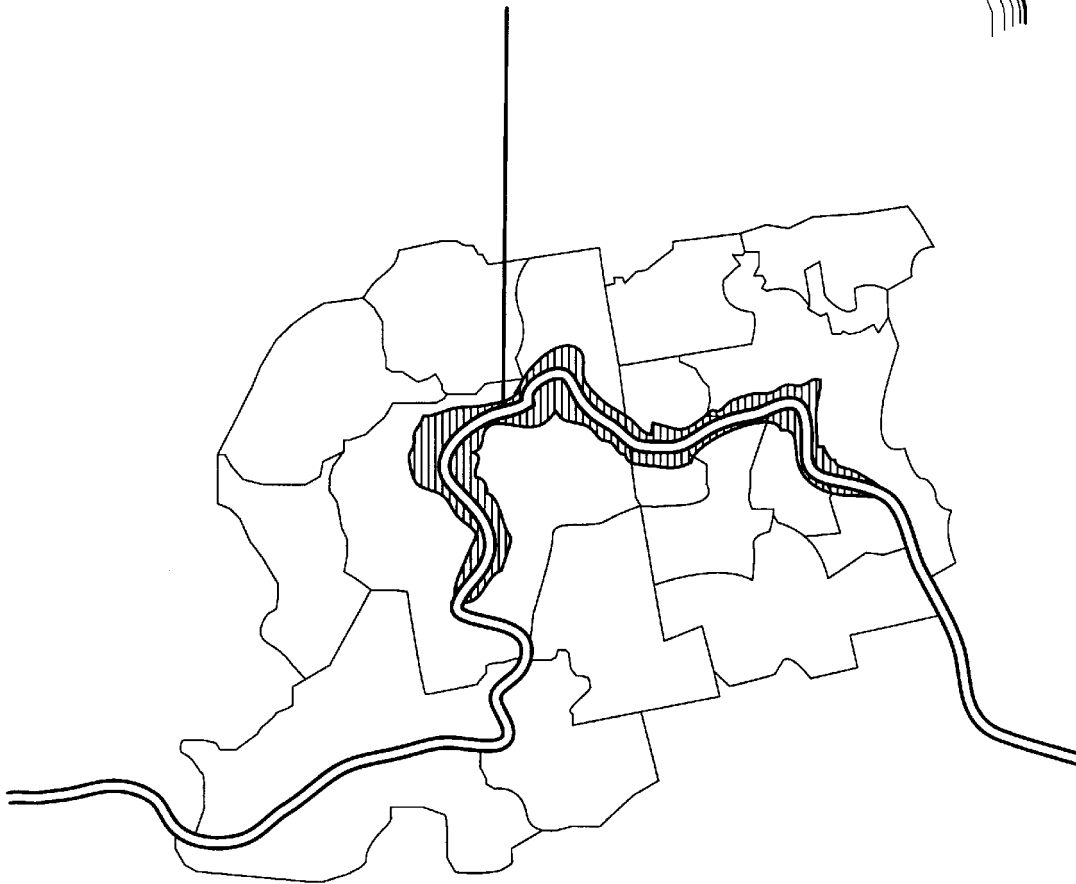
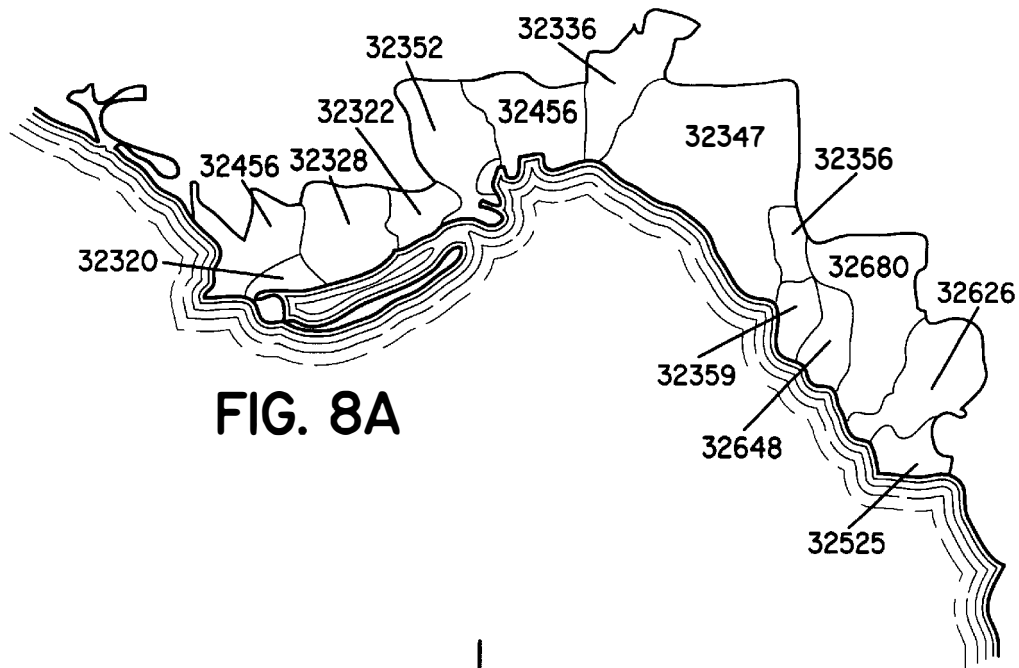


FIG. 8B

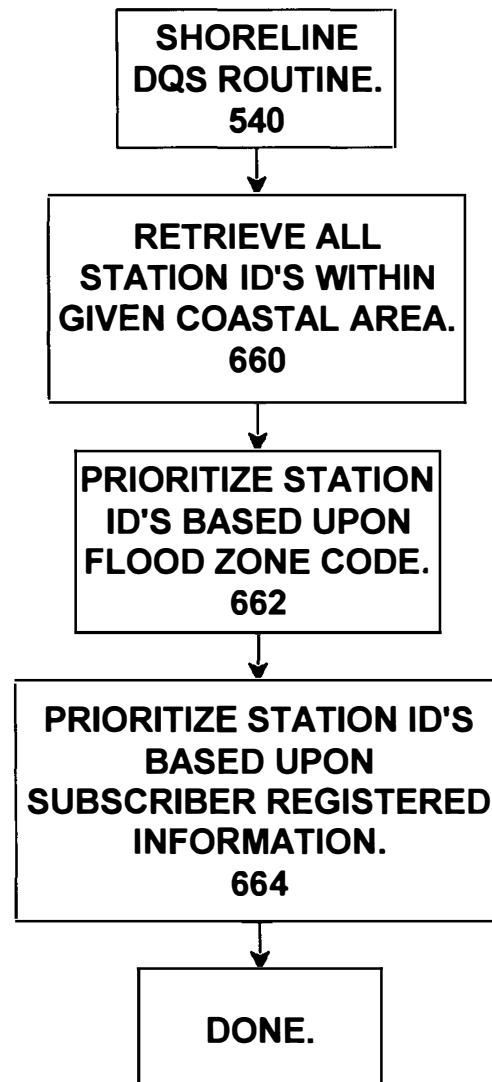
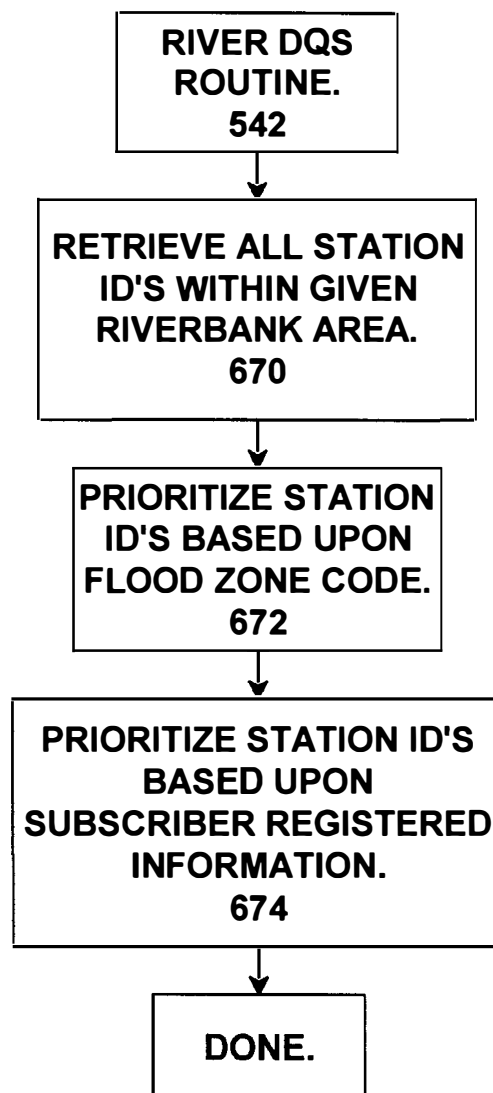


FIG. 9B

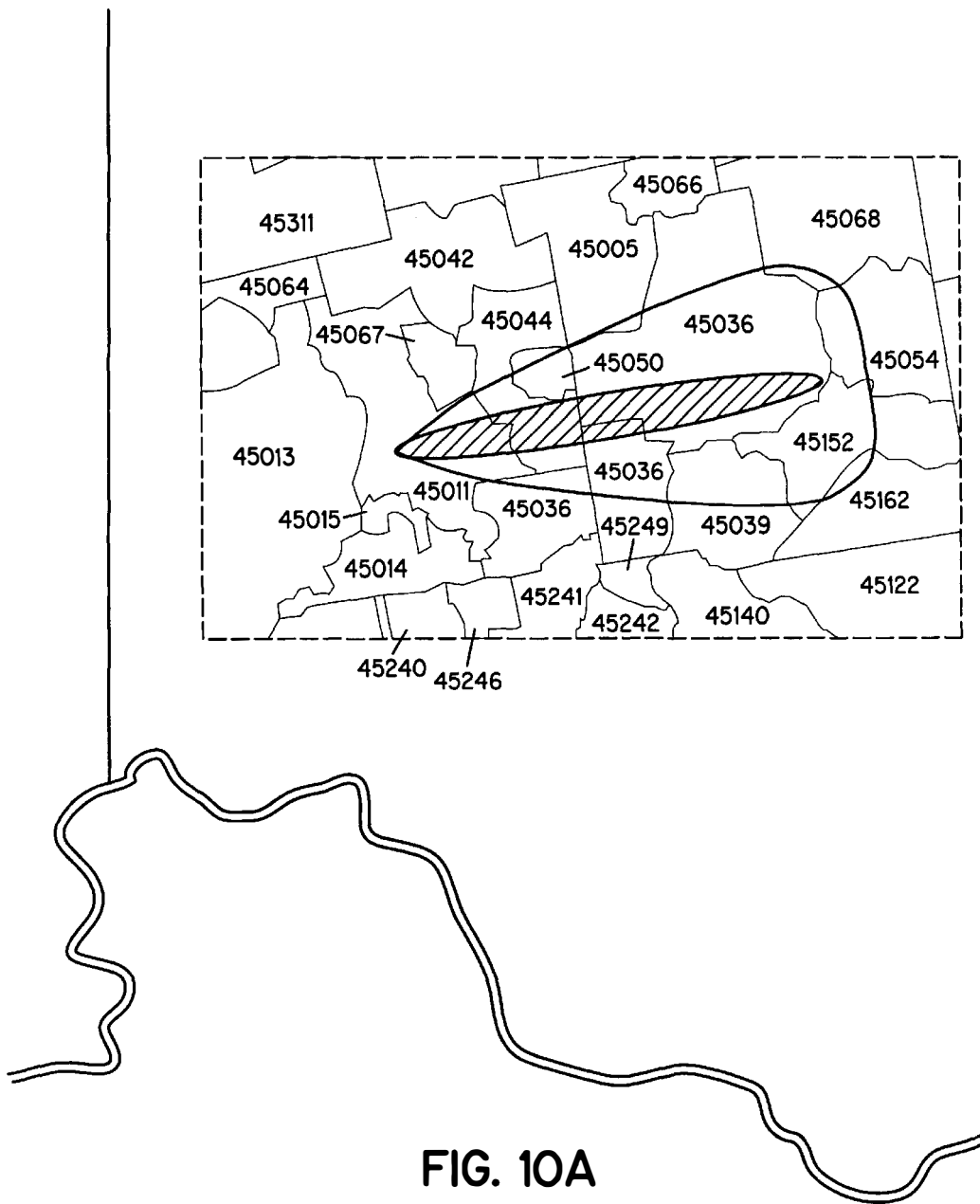


FIG. 10B

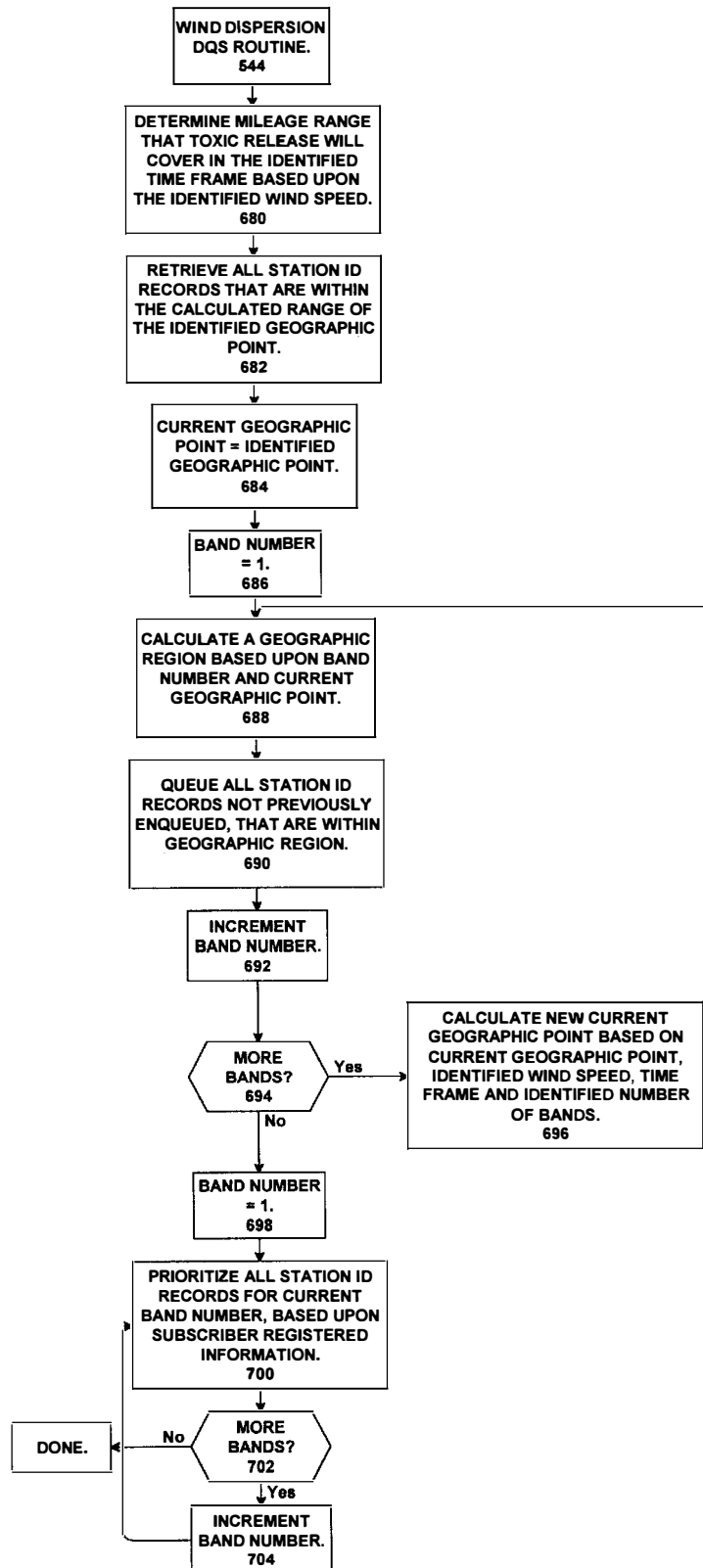
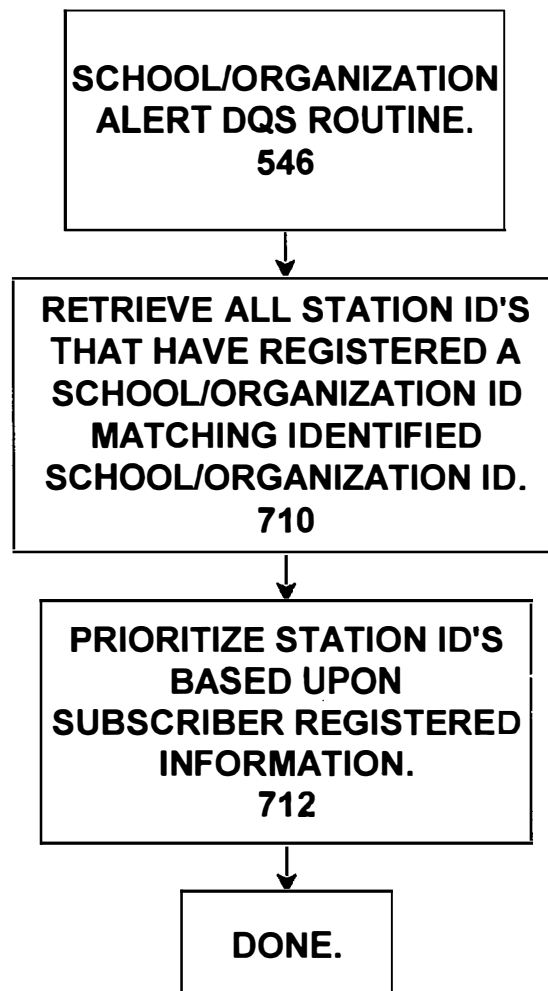


FIG. 11

1

ALERT NOTIFICATION SYSTEM

FIELD OF THE INVENTION

The present invention relates to the delivery of emergency information to persons needing to be notified of such information.

BACKGROUND OF THE INVENTION

Populations are increasing throughout the United States and globally. Population concentration increases the impact of localized emergencies such as weather, chemical spills, floods, etc., and thus increases the importance of notifying the public of emergency conditions in a timely manner.

Emergency services and public safety organizations have established technological systems that help to identify and communicate emergency situations. For example, emergencies may be centrally reported via 911 telephone communication systems, and disseminated via radio, satellite or Internet communications. Prediction methodologies have improved early detection of pending threats, particularly weather related threats such as tornadoes and floods, and communications networks have expanded to assist in the dissemination of this information. According to the National Weather Service (NWS) report "Reinventing Goals for 2000 Status B March 1999", the NWS requested \$42.1 million in FY2000 for its Natural Disaster Reduction Initiative (NDRI 2000) to continue to modernize and improve lead-times for severe weather events and expand the number of NOAA Weather Radio (NWR) stations. Forecasting and detection technologies, coupled with almost real-time distribution networks, have improved the average lead-time for severe weather events dramatically. Statistically, the NWS reports average lead-time detections for thunderstorm events are currently 17.9 minutes. This is an improvement of 43% over the pre-modernization lead-time lead times detection of 12.5 minutes for thunderstorms. Likewise, the improved tornado lead-time detection average is currently 11.0 minutes; improved by 162% over the pre-modernization lead-time average of 4.2 minutes. Furthermore, flash flood detections currently stand at 52 minutes of lead-time with an astounding improvement of 491%. Substantial increases in lead-time detection should contribute to more effective notification and ultimately more lives saved.

Although these improvements have provided greater accuracy and lead time in severe weather notifications, such notifications do not seem to be adequately communicated to citizens. Preliminary data as of Jul. 13, 1999 for the year 1999, shows that 99% of the total fatalities for tornadoes occurred during tornado watches. Statistics for 1998 similarly show 85% of all fatalities also occurred during tornado watches. Many of these fatalities could have been avoided if the persons involved had sought adequate shelter. This clearly indicates that there is a weakness in the existing infrastructure for notifying citizens of severe weather conditions. A review of this infrastructure and its shortfalls is thus in order.

Currently, the National Weather Service (NWS) collects and disseminates near real-time weather data to help identify and distribute alerts, watches and weather warnings for specific geographical regions around-the-clock over various distribution networks. For the cost of essential down link equipment, virtually anyone may receive nearly all this information at no charge. However, identifying what information is personally relevant does require the continuous sorting and digestion of the entire data stream 24 hours a day

2

and seven days per week. Practically speaking, many individuals just have no need for the entire data stream. They just need to know when an emergency pertains to them specifically, no matter where they are and no matter what time of day. For this, people rely on local media organizations and government organizations to monitor and provide notification should an emergency occur. Many public and private entities currently receive this data stream, then parcel, process, categorize and sometimes enhance this information to rebroadcast over various distribution networks so local citizenry, populations and private industry may be alerted or informed. Nevertheless, the typical citizen must rely upon the vigilance of public and private media broadcasters to constantly monitor this data stream and get "the word out" in time of emergency.

To help provide additional insurance and improve the likelihood for notification, individuals can purchase a NOAA Weather Radio (NWR) receiver. NOAA Weather Radio (NWR) is a service of the National Oceanic and Atmospheric Administration (NOAA) of the U.S. Department of Commerce. As the "Voice of the National Weather Service", it provides continuous broadcasts of the current weather information as well as hazardous local environmental conditions. Furthermore, a NWR receiver can detect codes in a NWR broadcast indicative of hazardous weather conditions, and respond by producing a special alarm signal that is separate from normal playback of weather broadcasts.

Most NOAA weather stations broadcast 24 hours a day, but NWR coverage is limited by nature and design to an area within 40 miles of the transmitter. Those living in cities surrounded by large buildings and those in mountain valleys with standard receivers get little or no reception at considerably less than 40 miles. As of February 1998, approximately 70 to 80 percent of the U.S. population are capable of receiving NOAA Weather Radio broadcasts. Most recently, as a result of the "Gore Initiative", there has been 99 new NWR stations put into operation and funding is being sought for 100 new stations to ultimately achieve a 95% population coverage in each state. Thus, ultimately the system will leave at least 5% of the population unable to hear broadcasts or weather alerts.

Of course, the 95% coverage figure quoted in the previous paragraph, assumes that everyone within the coverage area of a NOAA Weather Radio transmitter has purchased a NWR receiver and will always have it turned on. Unfortunately, many people that actually own a NOAA Weather Radio often leave it unattended and unmonitored. There are several reasons for this, ranging from misuse of the equipment to discomfort with leaving any household appliance continuously on. Perhaps the most pernicious problem is that weather broadcasts must cover a relatively large area and so many of the alert signals transmitted by those broadcasts will be irrelevant to a large percentage of the listening population. For example, flood or tornado warnings are typically applicable only to listeners in a subsection of a particular county, while the remaining listeners are not in substantial danger. Unfortunately, however, all citizens that are tuned to the weather broadcast will hear the alert signal for every localized emergency. This results in the situation not unlike the fable of the Boy Who Cried Wolf, in which citizens decide that the warnings are not normally relevant, and either ignore them or turn their NWS receiver off. Most particularly, citizens often do not place a NWS receiver in their bedroom, because they would rather not be disturbed at night unless there is a certain life-threatening emergency. This perhaps explains why tornadoes and floods that occur at night are often the most deadly, because citizens do not receive emergency notifications.

Local municipalities have sometimes utilized civil defense siren systems to sound loud audible alerts in time of emergency to help capture the attention of urban residents. However, the sounding of an emergency siren can be confusing, requiring the notification recipient to seek additional information. The siren could mean a severe weather emergency, a chemical spill, volcanic eruption, a monthly system test or any other condition that local government decides to note (such as a "noon whistle"). Many citizens will, as a consequence, ignore such sirens rather than invest the time to determine their meaning. Furthermore, under the best conditions, the effectiveness of a siren is dependent upon proximity to the siren. Citizens that live near to the siren, live in poorly sound-insulated buildings, have normal hearing and/or are light sleepers, are much more likely to be notified of emergencies than citizens that live far from the siren, live in quiet buildings, are hearing impaired and/or are sound sleepers. As a consequence, it has been found that many people sleep right through nighttime siren alerts, and many severe weather fatalities are attributable to people just not hearing a siren. Further diminishing this system's effectiveness, many siren systems are over 50 years old and plagued with maintenance problems. Furthermore, sirens evidence spotty urban population coverage due to urban expansion that has outgrown system capacity.

Similar problems of notifying citizenry arise in non-weather related emergencies. For example, when there is a chemical spill or explosive threat, appropriate emergency services are dispatched to attempt to mitigate the impact to human health or property. Often, the full scope of the emergency can not be ascertained until emergency crews actually arrive at the scene. If the emergency has the potential to escalate and endanger more lives and other communities, emergency organizations must again rely on broadcasting for notification.

The United States Environmental Protection Agency (U.S. EPA) requires companies to develop Risk Management Program (RMP) plans. The required RMP plans describe chemical risks at industrial sites and the programs these facilities use to prevent accidental releases and minimize the impact on human health in the unlikely event that a release should occur. When applicable, the RMP includes air dispersion modeling to determine the potential off-site consequences of a release. Some HAZMAT (Hazardous Materials) vehicles also contain portable computers loaded with software to calculate and plot air dispersion modeling on an area map to accurately define impacted areas. These tools assist the identification and mitigation planning for fire departments and emergency responders during hazardous chemical releases. However, in order for these agencies to take appropriate actions, including ordering evacuation or sheltering-in-place, the agency must be able to achieve prompt community notification. Unfortunately, community notice of evacuation and sheltering-in-place, can only be achieved by broadcast notification and/or door to door notification. However, as noted above, broadcasting requires the attention of local citizenry, and furthermore, door-to-door notification is time consuming and potentially dangerous to emergency personnel.

As has been shown, current reliance upon local media and supplemental NWR broadcasts are insufficiently effective in notifying individuals when danger threatens life or property. Citizens must always have their TV on and they must be watching; or their radio must be turned on and they must be listening for a broadcast alert to be effective. There is thus a compelling need for an alert notification system that is designed to always be available whenever the need arises, a

notification system that can not be turned off (short of termination of service). This system should not require the notification recipient purchase any additional equipment and the system should deliver an alert signal with which we have all been instinctively trained to respond. It is also important that the alert notification system have the ability to pinpoint, calculate and define dynamically all recipients with respect to their notification requirements then systematically notify those individuals (and only those individuals) within those defined geographic locations. The system must provide the notification quickly and accurately, with the ability to track the progress of the notification process and provide scenario resolution status until the notification scenario is completed or until the alert has expired.

SUMMARY OF THE INVENTION

The invention described in this patent application satisfies these fundamental needs. The invention builds from the recognition that virtually every office and home already includes a communication device that meets the above-stated requirements: it is always turned on, it produces a recognizable alert signal upon remote command, and citizens have been trained to respond to this signal under all circumstances. The device is the telephone. Utilizing principles of the present invention, anyone near to a telephone (including a wired or cellular telephone) can be notified of an emergency or alert that directly threatens or is of interest to him or her.

Although the specific embodiment of the invention described below is primarily directed to delivery of warnings via telephone, principles of the present invention are equally applicable to the use of other communications devices which may eventually become as popular as the telephone, such as computer networks, pagers, or other devices.

According to principles of the present invention, warnings such as weather or other emergency condition notifications, are provided to interested individuals by selecting from a database, communications identifiers (e.g., telephone/pager/facsimile numbers, computer network addresses such as Internet e-mail addresses or IP addresses), establishing communication connections using the identifiers, and then delivering an appropriate warning via the connection, which may or may not include information about where to find additional information.

In one disclosed embodiment, persons are selected in accordance with the physical location of the threat. To provide geographically-based notifications, the system registers the physical location for every communications identifier, based upon (among other possibilities) a county, city, area code, exchange, zip code, and/or global positioning coordinates (GPS). The degree of specificity used depends upon the specificity of the alert to a particular population or location. For example, storms will move with a particular trajectory and speed. A hazardous chemical fire will release a toxic cloud that will follow prevailing winds. The threat of a gas main explosion may require the evacuation notification with a specific mileage radius around one GPS coordinate or street address.

While the specific embodiment of the invention described below is primarily directed to geographically-based selection of communications identifiers, based upon identification of atmospheric conditions such as weather, toxic releases or other air quality conditions, principles of the present invention are equally applicable to delivering other kinds of warnings. For example, warnings of school closures, traffic

5

conditions and other closures, interruptions or schedule changes can also be provided to interested parties in accordance with principles of the present invention. In such cases, the information registered for each communication identifier is sufficient to determine whether that identifier should be warned of a particular event, and when such an event occurs, and an appropriate warning is delivered.

This system will thus "intelligently" provide notification to selected populations of citizens in a short period of time, based on specific criteria such as the location or type of situation, or the current or predicted movements of a threat. Furthermore, unlike the unsuccessful systems of the past, this system will track the notification process and call recipient responses, so it can then repeatedly attempt to notify all persons or locations until a response is registered, or the emergency expires or terminates based on a specific escalation scenario. This system can target specific locations or specific individuals, or both, based on the type of alert that is being generated. The system tracks every notification, re-contacts failed attempts, automatically executes a specific execution scenario dependent upon the alert requirements and delivers specific emergency information. Importantly, the system leaves uninterested citizens undisturbed, thus avoiding a "Boy Who Cried Wolf" problem.

The above and other objects and advantages of the present invention shall be made apparent from the accompanying drawings and the description thereof.

BRIEF DESCRIPTION OF THE DRAWING

The accompanying drawings, which are incorporated in and constitute a part of this specification, illustrate embodiments of the invention and, together with a general description of the invention given above, and the detailed description of the embodiments given below, serve to explain the principles of the invention.

FIG. 1 is a diagram of a system in accordance with principles of the present invention, having facilities for detecting alert conditions and distributing alert notifications.

FIG. 2 is a sample text file from EMWIN Data Stream.

FIG. 3 is an illustration of the database tables used by the system of FIG. 1, and

FIGS. 3A through 3C are detailed illustrations of each of the tables in the database.

FIG. 4A is a flow chart of the operations of the Notification Parsing System in accordance with principles of the present invention;

FIG. 4B is a flow chart of the operations of the IVR Administrative System in accordance with principles of the present invention;

FIG. 4C is a flow chart of the operations of the IVR Subscriber Registration System in accordance with principles of the present invention;

FIG. 4D is a flow chart of the operations of the Web Server Administrative System in accordance with principles of the present invention;

FIG. 4E is a flow chart of the operations of the Web Subscriber Registration System in accordance with principles of the present invention;

FIG. 4F is a flow chart of the operations of the Database Query System in accordance with principles of the present invention;

FIG. 4G is a flow chart of the operations of the Web Server in accordance with principles of the present invention;

6

FIG. 4H is a flow chart of the operations of the Switch Host in accordance with principles of the present invention;

FIG. 5A is an illustration of a Static Area Notification scenario, and

FIG. 5B is an illustration of specific operations performed by the Database Query System in handling this scenario;

FIG. 6A is an illustration of Radius Notification scenario, and

FIG. 6B is an illustration of specific operations performed by the Database Query System in handling this scenario;

FIG. 7A is an illustration of Vector Notification scenario, and

FIG. 7B is an illustration of specific operations performed by the Database Query System in handling this scenario;

FIG. 8A is an illustration of a Shoreline Notification scenario, and

FIG. 8B is an illustration of specific operations performed by the Database Query System in handling this scenario;

FIG. 9A is an illustration of a River or Flood Plane Notification scenario and

FIG. 9B is an illustration of specific operations performed by the Database Query System in handling this scenario;

FIG. 10A is an illustration of a Wind Dispersion Notification scenario and

FIG. 10B is an illustration of specific operations performed by the Database Query System in handling this scenario.

FIG. 11 is an illustration of specific operations performed by the Database Query System in handling a School/Organization alert.

DETAILED DESCRIPTION OF SPECIFIC EMBODIMENTS

FIG. 1 illustrates an alert notification system in accordance with the principles of the present invention. At the core of alert notification system 100 is a network of computers connected via computer network connection 102.

The computers on network 102 include a database server 104 for storing a database of information detailed below in connection with FIGS. 3, 3A, 3B and 3C. This database is utilized by other systems on network 102 to evaluate alerts and to deliver alert notifications to appropriate persons.

Connected to database server 104 via network 102 are three additional computers. The first computer system is a Notification Parsing System 106, which is connected to a receiver 108 that receives continuous data feeds from a satellite 109 and/or is connected to a radio receiver (e.g., an FM receiver 110) that receives continuous data feeds from a radio transmitter 111. Notification parsing system 106 may be programmed to evaluate notifications delivered by any one of a variety of organizations via anyone of a variety of communications mechanisms. For example, in addition to satellite and radio broadcasts, NPS 106 may also receive information via Internet dissemination. In the following description of an embodiment of the present invention, NPS 106 is responsible for receiving National Weather Service EMWIN data streams reporting weather conditions and other critical information. As further data streams become available via satellite, radio or Internet media, these additional data streams may be parsed by NPS 106 in a manner analogous to that described below.

Computer network 102 is also connected to a database query system 112. Database query system 112 interacts with database server 104 in response to messages received from

other computers, to evaluate alert conditions and determine appropriate recipients of alert information. Database query system 112 receives data packets from notification parsing system 106 and from a web server 114 connected to the Internet 115, and from an IVR system 116 that can be contacted from remote telephones 117. These data packets take the form shown in Table I.

TABLE I

Field Name	Size	Format
Notification Event	9	Numeric
Notification ID	4	Numeric
Priority Level	2	Numeric
State	2	Character
County	3	Numeric
City	3	Numeric
Zip Code	9	Numeric
Expiration Time	8	Time
Expiration Date	8	Date
Location Zip Code	9	Numeric
Location Latitude	9	Float
Location Longitude	9	Float
Radius	3	Numeric
GPS Coordinates	9	Numeric
Heading	3	Numeric
Speed	3	Numeric
Timeframe	3	Numeric
Bands	2	Numeric
School/Organization ID	9	Numeric

As seen in Table I, data packets include a variety of fields each for identifying particular information. Notification event is a nine byte field holding a numeric value indicating the type of notification that is being delivered. Notification ID is a four byte field holding a numeric value uniquely identifying the notification so that it can be distinguished from others of the same type. Each notification event, therefore, can be uniquely identified and tracked through archived information, as discussed further below. Priority level is a two byte field storing a numeric value indicating the priority of the notification. All notifications will include notification event, notification ID and priority level values. Furthermore, all alerts will include an expiration time value in an expiration time field, stored as an eight byte time formatted value. Furthermore, all alerts will include an expiration date stored in an expiration date field, stored as an eight byte date formatted value.

The additional fields shown in Table I, are used to specifically identify the location or circumstances of the alert, and may not all be used in any given alert. A State field includes two bytes of characters, providing a state code for the location of the event. A County field includes a three byte numeric value identifying a particular county. A City field includes a three byte numeric value identifying a city, and a Zip code field includes a nine byte numeric value identifying a zip code. An alert relating to a specific geographic location, such as a static area alert, will include one of a state, county, city or zip code value which will geographically reference the static area to which the alert applies.

Radius alert events are identified by reference to a specific geographic location and radius surrounding that location. For these events, a latitude and longitude will be stored in a location latitude field and a location longitude field, both of which carry nine byte floating point numeric values. As an alternative to a latitude and longitude, a radius event may store global positioning system (GPS) coordinates as a nine byte numeric value in a GPS coordinates field. Radius events will also store a radius value in a radius field as a three byte numeric value.

Vector alerts identify an area to be alerted utilizing a vectorized description of the location of the condition. These alerts will identify a heading in three byte numeric heading field, a speed in three byte numeric speed field and a time frame in a three byte numeric time frame field. Furthermore, for the purposes of processing these alert conditions, vector related alerts will also identify a number of bands used in processing the alert; this number of bands will be stored as a two byte numeric value. Vector related alerts will also include location information, for example, one of a zip code, latitude and longitude or GPS coordinate value.

Shoreline or river related alert notifications will carry information similar to static area alert notifications, i.e., a state, county, city and zip code identity.

A last category of alert is a school/organization alert, used to notify students/parents of a school cancellation/emergency or analogously notify members of an organization of a cancellation/emergency or schedule change. To facilitate such alerts, a School/Organization ID field holds a nine byte numeric value identifying a school (or school district) or organization. A school or organization related alert will identify the subscribers needing notification, using the school/organization ID number stored in this field.

Alerts are received by database query system 112 through a variety of channels and take different forms. Weather related alerts including flood alerts and other alert conditions identified by the National Weather Service are provided by notification parsing system 106 to database query system 112.

Referring to FIG. 2, it can be seen that a text file 118 produced from the EMWIN data stream includes a number of fields that can be readily parsed by notification parsing system 106. The first line "WFUS1 KIWX 010238" is a "WMO" header that includes a 4-6 character product identifier, a 4 character source site code, and a GMT formatted 6-digit origination time. The subsequent lines of the EMWIN data stream include text information and codes, as well as, in some cases, graphic files and other data. Detailed information on the format of the EMWIN data streams is available from NOAA, e.g. from the URL <http://www.nws.noaa.gov/oso/cominfo.shtml>.

Each EMWIN file includes prefix codes identifying a particular event that is the subject of the notification. As can be seen in FIG. 2, the notification code of TOR 120 in the second line of the file, is used to identify a tornado warning. Notification parsing system 106 identifies this product code and uses it to generate an appropriate packet utilizing the format of Table I. Notification parsing system 106 also parses the remainder of the text file to identify geographic locations. These may be coded using "Universal Generic Code", e.g., including the county identifiers INC141 and INC099 (or the subsequent text 122) shown in FIG. 2, which identify St. Joseph County and Marshall County in north central Indiana. County identifiers are coded using the Federal Information Processing Standard (FIPS 6-3), under which each county has a 3-digit identifier. The identified county information can be enhanced by parsing the subsequent text, which as shown at 122 indicates that the alert condition is specifically for southwestern St. Joseph County and extreme northwestern Marshall County.

Furthermore, notification parsing system 106 may identify heading information such as, at 124, the text indicating that the tornado is moving northeast at 40 mph. The alert time and alert ending time information, available in GMT format ("010238" and "010305"), and in a text format, can be used to identify a time period for the alert. Notification

parsing system 106 may also utilize the listing of affected towns at 126 to identify zip codes of those locations and thereby produce alert notifications based upon zip codes. Furthermore, the body of the NWS message may also be inserted into a facsimile message, sent as an electronic mail message, read via a computer-generated voice over the telephone, or forwarded to a text pager.

Table II, appearing below, summarizes the prefix codes utilized in EMWIN data streams and the meanings of those prefix codes. Each particular type of alert will be converted to alert messages if an appropriate type can be gleaned from one or a collection of EMWIN data stream segments.

TABLE II

Prefix	Name
AFD	Area Forecast Discussion
AIR	Upper Air (Data)
APT	Polar Orbiter Images
ASH	Volcanic/FIRE Warnings and reports
AWS	Area Weather Summary
CEM	Civil Emergency Message
CFW	Coastal Flood Warning
CHT	Charts DIFAX/WEFAX
CLI	Climate Reports
CMP	Composite Images (CMPALLUS.GIF)
CMP	Compressed Files (CMPMxxxx.ZAG)
CWF	Coastal Waters Forecast
DY1	Day One Convective Outlook
DY2	Day Two Convective Outlook
ELN	El Nino images
EMA	Emergency manager activation msg.
EML	Email (wireless)
EPH	Ephemeris data for satellite orbits
EQR	Earthquake Data
ESF	Flood Potential
ESS	Water Supply Forecast
FAA	Aviation Reports (Pilot briefs)
FEE	Feedback to all users
FFW	Flash Flood Warning
FFA	Flash Flood Advisory
FFS	Flash Flood Statement
FLN	National Flood Summary
FLW	Flood Warning
FWF	Fire Weather Forecast
GLF	Great Lakes Forecast
GLO	Great Lake Outlook
GLS	Great Lakes Summary
GMS	GMS Satellite Images
GO9	GOES 9 Satellite Images
G10	GOES 10 Satellite Images
GPH	Graphic Files (AFOS Graphics)
HAA	Hurricane Probabilities Atlantic
HAD	Hurricane Discussion Atlantic
HAF	Hurricane Forecast Advisory Atlantic
HAM	Hurricane NCEP Model Comparison Atlantic
HAP	Hurricane Public Advisory Atlantic
HAS	Hurricane Monthly Summary Atlantic
HAT	NCEP Tropical Discussion Atlantic
HAW	Tropical Weather Outlook Atlantic
HEA	Hurricane Probabilities East Pacific
HED	Hurricane Discussion East Pacific
HEF	Hurricane Forecast Advisory East Pacific
HEM	Hurricane NCEP Model Comparison East Pacific
HEP	Hurricane Public Advisory East Pacific
HES	Hurricane Monthly Summary East Pacific
HET	NCEP Tropical Discussion East Pacific
HEW	Tropical Weather Outlook East Pacific
HFF	High Seas Forecast
HLS	Hurricane Local Statement
HNA	Hurricane Probabilities North Pacific
HND	Hurricane Discussion North Pacific
HNF	Hurricane Forecast Advisory North Pacific
HNM	Hurricane NCEP Model Comparison North Pacific
HNP	Hurricane Public Advisory North Pacific
HNS	Hurricane Monthly Summary North Pacific
HNT	NCEP Tropical Discussion North Pacific

TABLE II-continued

Prefix	Name
HNW	Tropical Weather Outlook North Pacific
HSA	Hurricane Probabilities South Pacific
HSD	Hurricane Discussion South Pacific
HSF	Hurricane Forecast Advisory South Pacific
HSM	Hurricane NCEP Model Comparison South Pacific
HSP	Hurricane Public Advisory South Pacific
HST	NCEP Tropical Discussion South Pacific
HSS	Hurricane Monthly Summary South Pacific
HSW	Tropical Weather Outlook South Pacific
HWA	Hurricane Probabilities West Pacific
HWD	Hurricane Discussion West Pacific
HWF	Hurricane Forecast Advisory West Pacific
HWM	Hurricane NCEP Model Comparison West Pacific
HWP	Hurricane Public Advisory West Pacific
HWS	Hurricane Monthly Summary West Pacific
HTW	Hurricane NCEP Tropical Discussion West Pacific
HWU	Hazardous Weather Update
HWW	Tropical Weather Outlook West Pacific
HTM	HTML Documents
ICE	Ice Statement
IMG	General Images (IMGALLUS.GIF)
INT	International Overviews
LFP	Local Forecast
LGT	Lightning Images
LSH	Lake Shore Forecast
LSR	Local Storm Report
MET	Meteosat Images
MIS	Miscellaneous Products
MOD	Model Run Images
MWS	Marine Weather Statement
NAH	Agriculture Products (Intn'l /National)
NSH	Near Shore Forecast
NOW	NOWcasts (Short Term Forecast)
NPW	Non-precipitation Warning
NWX	National Weather Summary
OFF	Offshore Forecast
OMR	Other/Offshore Marine Reports
PAA	Pager Messages
PNS	Public Information Statements
PRO	Propagation Reports
PSR	Post Storm Report
RAD	Radar Images (RADALLUS.GIF)
REC	Recreation Forecasts
RER	Record Event Reports
RFW	Red Flag Warning (Fire Warning)
RVA	River Summary
RVR	River Forecast
RVS	River Statement
RWS	Regional Weather Summary
SAH	Surface Observations (Data)
SAO	SAORCMUS.TXT Contains RCM's
SAW	Selected Area Watches
SCS	Selected cities (scs11-scs14)
SEL	Watch areas
SES	Seismic/Earthquake Images
SFD	State Forecast Discussion
SFP	State Forecast
SHP	Live Ship Reports
SIX	Six to Ten day outlook
SLS	Areal update
SKY	SKYWARN Activation Message
SMW	Special Marine Warning
SPS	Special Weather Statement
STP	State Temp & Precip Reports
SUM	State Weather Summary
SVR	Severe Thunderstorm Warning
SVS	Severe Weather Statement
SWO	Severe Weather Outlook
SWR	State Weather Roundup
SWX	Space Weather (solar activity)
SYS	System messages
TAF	Aviation Terminal Forecasts/airports
TID	Tide Data
TOR	Tornado Warning
TRK	Tracking Files (storm tracks)
TSU	Tsunami
TVL	Travelers Forecasts

TABLE II-continued

Prefix	Name
LVI	National Ultra-Violet index
WSW	Winter Storm Warning
WWA	Weather Watch
ZFP	Zone Forecast

Returning now to FIG. 1, in addition to the EMWFN system, alert conditions may also be identified by individuals authorized to initiate the delivery of alerts through the alert notification system 100. Authorized individuals may include civil defense authorities in the case of civil emergencies, school administrators in the case of school related alerts, and managerial employees of business or community organizations that wish to utilize the system of FIG. 1, via organization alerts.

Alerts initiated by these authorized individuals may be delivered to the system 100 via an interactive voice response system 116 which can be accessed via any telephone. Alerts may also be delivered via an Internet connection, for example using a World Wide Web browser connected via hypertext transfer protocol (HTTP). In this case, connections are made through the Internet to web server 114 to generate an alert message.

Alerts generated using web server 114 or IVR server 116 are delivered to database query system 112 through packets which are also formatted in accordance with Table 1. Database query system 112 then identifies subscribers to be individually alerted, and then alert notifications are delivered to subscribers, via telephone, via facsimile, via electronic mail or via other electronic communications.

Telephone and facsimile alerts are delivered to subscribers through a switch host computer 130 and a host controllable switch 132. Switch host computer 130 is connected to host controllable switch 132. Switch 132 is a host controllable switch that interfaces with digital telephone lines 134 of a telecommunications carrier to permit outbound telephone calls to be generated at a high volume, to be delivered to subscribers to the system 100. Outbound telephone calls from host controllable switch 132 are routed through the public switched telecommunications network 136 to telephones subscribed in system 100, such as wired telephones at private homes and businesses, as well as cellular telephones. Outbound telephone calls from host controllable switch 132 may also connect to facsimile machines to deliver facsimile alert messages.

As can be seen in FIG. 1, switch host 130 and host controllable switch 132 can be utilized to handle multiple alerts from multiple locations simultaneously. As can be seen in FIG. 1, an evacuation alert using a radius pattern is being delivered to a region 140 in the state of Washington; simultaneously, an alert related to an earthquake warning is being delivered to a region 142 in the state of California; a radiation leak wind dispersion alert is being delivered to a region 144 in the state of Texas; a flood or high wave condition alert is being delivered to a shoreline region 146 in the state of Florida; a weather alert is being delivered to a region 148 in the state of Ohio; and a biohazard related alert is being delivered to a region 150 in upstate New York.

The system illustrated in FIG. 1 is scalable such that any quantity of alerts to any geographic regions can be handled by simply enhancing the capacity of host controllable switch 132. Such enhancement is within the knowledge of those of skill in the art of telephony. Accordingly, a nationwide or

even global alert notification system can be implemented at a single geographic location using the principles of the present invention.

To ensure high reliability and robustness, in accordance with the principles of the present invention, the system 100 may be redundantly positioned at multiple geographical locations. Thus a second redundant real time tandem system 100 with an analogous configuration, may be located at a separate geographic location and connected via a point to point data connection 160 to the system 100 illustrated in FIG. 1. Systems 100 and 100' are in continuous communication over point to point link 160 to insure that all alert notifications are received by both systems, and thereafter one system is tasked with handling each notification. The systems also continuously communicate to maintain synchronization of the databases handled by the respective database servers of the respective systems. In the event of a failure at one of the tandem systems, all existing requests for alert notification will be handled by the other system to insure that the alerts are delivered appropriately in spite of the network failure.

As noted above, telephone and facsimile communications are delivered to telephone and facsimile machines via host controllable switch 132. Alert notifications may also be delivered via electronic mail or other Internet communication methodologies. In this case, the alert notification is handled by web server 114. In such a scenario, database query system 112 instructs web server 114 to deliver the alert notification, and in response web server 114 connects via its Internet connection to the appropriate location to deliver the alert.

Table III, which appears below, illustrates the format of packets transferred from database query system 112 to switch host 130 and web server 114 to cause an alert to be delivered.

TABLE III

Field Name	Size	Format
Priority Level	2	Numeric
Notification Event	9	Numeric
Station ID	30	Character
Station ID Type	2	Numeric
Message ID 1	4	Numeric
Message ID 2	4	Numeric
Message ID 3	4	Numeric
Message ID 4	4	Numeric

As seen in Table III, packets sent from database query system 112 include fields for specifically identifying the recipient of an alert and the type of the alert. The first field, "priority level" includes a two byte numeric value indicating a relative priority of the alert message. This value is derived from priorities assigned to alerts delivered to database query system 112 by notification parsing system 106 or web server/IVR system 114, 116. A second field, "notification event", includes a nine byte numeric value having a numeric code for the type of alert that is being delivered. A third field, "station ID" includes a 30 byte character value that identifies the recipient of the alert notification. In the event that the alert is being delivered via telephone or facsimile, the station ID field will include a telephone number. In the event that the alert is being delivered via electronic mail or the Internet, the station ID will include an electronic mail address or a uniform resource location (URL) indicating where the alert is to be delivered. A "station ID type" field includes a two byte numeric value identifying the type of station ID that is

13

provided in the preceding field. Thus alerts to telephones can be distinguished from alerts to facsimile machines, from alerts to electronic mail addresses and from alerts to other IP or similar computer network addresses.

After these fields are four message ID fields, each of which is a four byte numeric value. These fields contain a code for a message to be delivered to the subscriber/recipient of the alert. Multiple messages may be delivered simultaneously; to facilitate this, four message IDs may be supplied in single packet as illustrated in Table III. The message IDs may be an index usable by host controllable switch 132 to retrieve a voice message to be delivered via telephone, or may be an index to a prestored facsimile message to be delivered to a facsimile machine. In the case of alert notifications to be delivered to email or Internet addresses, each message ID will be an index to prestored text for the email message or prestored text or other actions to be performed at a web site or other resource accessible via the uniform resource locator.

Referring now to FIG. 3, the databases utilized by the system of FIG. 1 are generally illustrated. These databases are stored and managed by database server 104. Notification parsing system 106 and database query system 112 retrieve data from these databases as needed to perform the functions discussing generally above and elaborated below.

Tables 170 and 172 managed by database server 104 are used by notification parsing system 106 in parsing EMWFN data streams from the National Weather Service. The notification parsing system 106 parses data received from these data feeds to identify text, graphic and image files. Each file is then processed to determine its file type. The file types listed in Table I are stored in notification table 170.

The detailed format of notification table 170 is shown in FIG. 3A. Each record of the notification table 170 includes a product ID field 174 which is a three byte character value in the formats shown in Table I above. A second field 176 stores a two byte numeric value identifying a priority level for the product or event type represented by the record. A third field 178 stores a 4 byte numeric value providing a notification identifier associated with the product represented by the record. The notification identifier maps to one of the predefined notifications handled by the system, and is used when delivering a corresponding packet in the format illustrated in Table 2 from the notification parsing system to the database query system.

FIG. 3B illustrates a priority table 172 which provides specific information about priority levels identified in field 176 of the notification table 170. Each record in the priority table 172 includes a priority level field 180 for storing a two byte numeric value identifying a priority level. Each priority table record includes a resource utilization field 182 for storing a percentage value indicating the amount of resources of the system that are to be consumed for an alert at the identified priority level. The resource utilization percentage identified in field 182 is used in determining the extent to which a given alert should be allowed to consume all of the computational resources of database query system 112 and/or switch host 130 and line capacity of host controlled switch 132.

FIG. 3 also illustrates a variety of subscriber related tables 184, 186, 188, 190, 192 and 194. These tables are used to store information relating to subscribers to permit database query system 112 to identify specific subscribers to receive alert notifications in response to packets received from web server 114, IVR system 116 or notification parsing system 106.

14

Referring now to FIG. 3C, the schema of these tables 184-194 can be viewed in detail.

The subscriber information table 184 includes information regarding a subscriber that is useful for determining whether that subscriber should be notified of an alert condition. Each record in the subscriber information table 184 includes a field 200 providing a customer number or customer identifier for this subscriber. This unique identifier is used to link information about a subscriber in table 184 to information about the same subscriber in the other tables 186, 188, 190, 192 and 194. Subscriber information table 184 also includes extensive information regarding the subscriber to be used in contacting the subscriber. For example, a field 202 is used to store a telephone number or ANI used to contact the subscriber. A field 204 includes an electronic mail address for the subscriber. A field 206 includes an Internet, i.e., TCP/IP address for the subscriber. Typically a subscriber will have only one mode of contact, i.e., only one of the three fields 202, 204 and 206 will include a value. However, a subscriber may also have multiple modes of contact registered (see table 192, discussed below) in which case the appropriate mode of contact is chosen based upon the priority of the alert, the type of the alert or subscriber preferences.

Continuing on the subscriber information table 184, the table includes fields for identifying information regarding the subscriber that can be used to determine whether the subscriber ought to be notified of a given alert condition. These fields include a field 208 for storing a postal zip code for the subscriber, a field 210 for storing the county identifier for the subscriber, a field 212 for storing a state identifier for the subscriber and a field 214 and a field 216 for identifying a latitude and longitude for the subscriber. Fields 208 through 216 identify at varying levels of specificity the geographic location of the subscriber so that the subscriber can be selected for receipt of a notice under the appropriate conditions. Other information may also be used to determine whether a subscriber should be contacted. For example, a school district name and a school organization ID are stored in fields 218 and 220 to affiliate the subscriber with a school or organization that may need to inform pupils or organization members of cancellations or changes utilizing the alert notification system of the present invention. A field 222 is used to store an elevation at the subscriber's location and a field 224 is used to store a flood zone code for the subscriber. These fields will be used to identify whether the subscriber is subject to alert notifications relating to floods or weather conditions that only affect certain elevations or flood zones. A field 226 may also be used to classify the location of the subscriber in other ways, for example nearness to open space or trees where wind damage may be more likely, or location within an office building at which shelter may be more difficult to find. A field 228 includes coding relating to the construction of any building associated with the subscriber. A field 230 is used to identify the number of levels in the building associated with the subscriber. Fields 228 and 230 can be used together to prioritize the danger to a subscriber arising from a weather condition or any other condition that may be more dangerous to some forms of building construction or some heights of buildings. A field 232 is used to generally classify any special needs of the subscriber that may be applicable in determining the priority to be given alerting the subscriber of conditions monitored by the system. These conditions may include the need to use a wheelchair or personal assistance to seek shelter in the basement of the subscriber's location. Fields 234, 236, 238 provides an indication of the number of persons potentially

15

at risk at the location identified in the record. Field 234 provides a count of adults at that location, field 236 provides a count of the number of elderly persons in that location and field 238 provides a count of the number of children in that location. Alert notifications may be prioritized to reach the largest population of persons most rapidly or may be prioritized to reach locations where there are children or elderly citizens more rapidly in order to provide the required additional time to take shelter. Additional fields 240 and 242 are used to determine whether a subscriber should receive priority for atmospheric condition alerts, or is interested in such alerts at all. Field 240 indicates that a subscriber has a respiratory condition of the kind that would be affected by ozone alerts or other respiratory-related weather conditions that may adversely impact only those members of the population with respiratory conditions. A field 242 will be used to identify allergic conditions of persons at this subscriber location such that alert notifications may be provided to indicate the presence of allergens of a particular kind in the atmosphere. A field 244 indicates whether the 1 subscriber location is capable of receiving broadcasts of weather or other alert information. The subscriber may be placed in a higher priority if the subscriber is not able to receive alert notifications via other broadcast media. The field may also indicate that the subscriber is, itself, a "broadcaster", i.e., a party that relays alert information to further persons. A "broadcaster" is also provided with enhanced priority to assist in fulfilling broadcast responsibilities and to ensure the greatest number of persons are notified of the alert as soon as possible. Field 244 may also be used to "brand" the alert notification, e.g. by identifying a broadcast station that sponsors the delivery of the alert notification, so that subscribers develop goodwill for the sponsoring station and turn to that station for additional information. A field 246 indicates whether a basement is available at the subscriber location aiding and prioritizing subscribers who do not have access to sufficient shelter over other subscribers who do have access to sufficient shelter within their own homes. This, for example, would allow alerts to be delivered first to mobile home parks and other (high risk) areas that are particularly susceptible to weather damage. A field 248 indicates whether the subscriber location has an answering machine and a field 250 indicates the ring count for the answering machine. These fields are used to avoid leaving a message on an answering machine or voice mail service if there is such a service in use at the subscriber's location. The ring count is used to ensure that the host controlled switch will disconnect prior to reaching the identified number of rings, so that the answering machine or voice mail system will not pick up the line. As a consequence, the subscriber's location will be called repeatedly until an answer is received, thus ensuring that the alert message is delivered to a person rather than to an answering machine or voice mail system.

The final two fields 252 and 254 are useful in managing the delivery of information to the subscriber. Specifically, field 252 stores the identifier for the last notification that was provided to the subscribers location, and can be used as a confirmation that a notification was given to the subscriber with respect to that condition. A retry Count found in field 254 is used to control the number of times a subscriber location is contacted to attempt to deliver emergency information. A subscriber may wish to set a retry count value based upon preference and knowledge of the subscriber's ability to consistently answer telephone calls during a known period of time.

The subscriber billing table 186 stores information used in invoicing a subscriber for services provided by the alert

16

notification system. A field 260 the subscriber billing table 186 is used to store a customer number, i.e., customer identifier for a subscriber to thereby relate the subscriber to the other tables illustrated in FIG. 3C. A subscriber billing table 186 provides information needed to appropriately bill a subscriber for services provided by the system. These fields include a field 262 for storing a first name, a field 264 for storing last name, fields 266 and 268 for storing two lines of physical addresses for the subscriber, a field 270 for a city, a field 272 for a state and a field 274 for a zip code. Additional fields are used to provide a billing address if needed for the subscriber including a field 276 for name, fields 278 and 280 for a billing address, a field 282 for a city, a field 284 for a state and a field 286 for a zip code. A field 288 identifies a billing method preferred by the subscriber, such as advance invoicing or alternatively automatic payments via credit card. A field 290 identifies the billing period preferred by the subscriber, such as weekly, monthly or annually. Discounts may be provided for prepayment of large subscription periods. Fields 292 and 294 identify starting and ending dates for service provided by the system during a current billing period. Fields 296 and 298 provide a credit card number and expiration date to be used in billing the subscriber. Fields 300, 302, 304 and 306 provide name and address information for a credit card to be used in billing the subscriber in advance via credit card. This information must be stored to insure payment by the credit card company for charges billed. Fields 308, 310 and 312 store automated clearinghouse (ACH) information for the customer, which may be used to generate ACH transactions to automatically invoice the customer for payments for services provided by the system.

Subscriber census table 188 stores information relating to persons at the location identified in the subscriber information table 184. Subscriber census table records include a field 320 for storing customer identifier to link the record to subscriber information in subscriber information table 184. Subscriber census table 188 also includes fields 322 and 324 for storing a first and last name for a subscriber, and an age field 326 for storing an age of a subscriber. It will be appreciated that a given subscriber location may be inhabited by multiple persons in which case there are multiple subscriber census table 188 entries, one for each person, so that information about the multiple persons may be stored and retrieved and used to customize alerts. Furthermore, subscriber census information can be used to provide census data to emergency agencies via telephone, facsimile, e-mail, or other media. This information can facilitate rescue efforts and further define the impact of an emergency condition on local emergency response services. For example, in the case of an explosion, census information can be used to define population impact, aid in targeting the search for survivors, and defining an evacuation scale. For the case of a biohazardous condition, census information can aid in defining the amount of medical services that will be consumed in treating victims.

Subscriber notification preferences table 190 is used to identify preferences of a subscriber with respect to notifications by the system. A field 330 is used to store a customer identifier to link the preferences identified in table 190 in the subscriber information table 184. Additional fields in the subscriber notification preferences table 190 include a field 332 for storing a notification type and fields 334 and 336 for identifying a start hour and minute and fields 338 and 340 for identifying an ending hour and minute. A record in subscriber notification preferences table 190 can be used to identify the hours during which an alert notification should

17

be sent to a given subscriber location. Thus, a subscriber may request that atmospheric condition alerts that are not immediately hazardous, such as ozone alerts, not be notified to their home location during the nighttime when residents of the home will be sleeping and not traveling outdoors. It will be noted that each record in subscriber notification preferences table 190 relates to a particular notification type and a particular subscriber. Thus there may be multiple preference records in table 190 for a given subscriber, one record for each type of notification for which the subscriber has indicated preferences.

Subscriber alternate contact table 192 is used to provide additional contact information for subscribers. Each record in table 192 includes a field 350 for identifying a customer identifier to link the alternate contact information to the subscriber information table for the subscriber. Each record in the subscriber alternate contact table 192 includes fields 352, 354 and 356 for identifying a telephone number or ANI, an email address and TCP/IP address. Through the use of alternate contact records in alternate contact table 192, multiple contact points may be entered into the database for a given subscriber so that a subscriber may be contacted at, for example, multiple phone numbers at a given location or at a phone number and at a cellular telephone number, or at multiple email addresses.

Subscriber history table 194 is used to store historic information on alerts delivered to a subscriber for the purposes of auditing alerts, and potentially for billing subscribers on an alert basis. Each record in subscriber history table 194 includes a customer number (customer identifier) field 360 for linking the record to other subscriber information in the database. Each record also includes additional fields for providing historical information on a type of notification which was delivered or attempted to be delivered to the subscriber. This information includes a date and time stored in fields 362 and 364 and a type of notification stored in field 366. A notification identifier which uniquely identifies the notification stored in field 366 is stored in field 368. Field 370 provides a communications addresses used to attempt to notify the subscriber of the condition, and field 372 indicates whether the alert was successfully completed. It will be appreciated that a given subscriber may receive multiple alerts from the system over the passage time and therefore a subscriber will have multiple records that will appear in subscriber history table 194, one for each alert or attempted alert to the subscriber that has been historically provided. It will also be appreciated that a subscriber history table record will be generated each time an alert is attempted to a subscriber and that record will be updated to indicate whether the attempt was successfully completed and the type identifier and communications addresses used in attempting the alert notification.

Referring now to FIG. 4A, the process for parsing EMWIN data feeds at the notification parsing system 106 can be explained in further detail. In a first step 400, the data feeds from FM receiver 110 and/or satellite receiver 108 are initialized. Then in step 402, notification parsing system 106 waits for data from the initialized data feed. When data is received, in step 404 the data is read until an END OF FILE code is reached. (An END OF FILE code can be seen in FIG. 2 at the end of the textual information.) In a subsequent step 406, the National Weather Service product ID for the feed is determined. This product ID can be seen at 120 in FIG. 2. In subsequent step 408 a database record is retrieved from the notification table 170 of FIG. 3A that has a product ID in field 174 matching the product ID of the received data. In step 410 it is determined whether a record exists in the

18

notification table. If not, then in step 412 the received file is archived and the notification parsing system 106 returns to step 402 to wait for additional data.

If a record is found in step 410, then in step 414 the received data file is parsed for the notification type and affected area. This will involve pattern matching and text parsing as discussed above with reference to FIG. 2. Subsequently, in step 416 the file is parsed for an expiration time, current location, heading and speed, if such information is available in the text file. After this information has been collected, in step 418 a data packet (having the format illustrated in Table I) is generated. All pertinent information that has been obtained from the data stream is included in the data packet. In step 420 the data packet is sent to the database query system 112. Thereafter, in step 422, it is determined whether the END OF FILE code has yet been reached. In some cases, multiple products may be compiled in the same text file. When this occurs, processing will return to step 414 to continue to parse the file for additional notifications. When the END OF FILE is reached in step 422, processing returns to step 402 to wait for additional data.

Referring now to FIG. 4B, the processing performed by the IVR administrative system can be explained in further detail. In a first step 430, IVR administrative system 116 waits for a call from a user. In step 432 a user dials into the IVR administrative system; in response step 434 the IVR administrative system receives the ANI or caller ID for the caller from the telephone network. In step 436 the caller is prompted to enter a login identifier and a password using touch tone keys on their touch tone telephone. In step 438 the ANI, login identifier and password collected in the proceeding steps are compared to those of authorized users of the system. If the ANI, login ID and password combination is not found, then in step 440 the caller is notified that access is denied, and the connection is terminated. If the caller is authorized, then in step 442 the caller's login ID is used to determine notification types that the caller is allowed to initiate. In step 444, the caller is then prompted for a notification type. The caller will then provide, using DTMF (touch tone) telephone keys, a notification type number. In step 446 it is determined whether the entered notification type is one that is allowed for the caller. If so, then in step 448 the caller is prompted for relevant information needed to prepare an alert notification. This information may include a location code, a latitude and longitude, heading and speed information or other information that is relevant to the type of alert that is to be generated. In step 450 this information is built into a data packet conforming to the format of Table I. Then in step 452, the packet is sent to the database query system 112 for use in generating alerts to the affected subscribers. Thereafter, in step 454 the caller is prompted for any additional notifications of affected areas, so that the caller may in rapid succession enter a number of alerts or identify a number of affected areas. If the caller, again using DTMF (touch tone) keys, indicates that there are additional notifications or affected areas, processing returns to step 444 to prompt the caller for those additional notifications. If the caller indicates that there are no more notifications or affected areas, or terminates the connection, then in step 456 the IVR administrative system 116 disconnects and then returns to step 430 to wait for another call.

Returning to step 446, if the notification type entered by the caller is disallowed, processing continues from step 446 to step 458 in which the caller is notified that the caller has entered a disallowed notification type. Processing then continues to step 454 to permit the caller to enter a new notification if another is desired.

19

Referring now to FIG. 4C, the process performed by IVR subscriber registration system to enroll new subscribers can be described in greater detail. In a first step 460, the IVR subscriber registration system waits for a call from a new subscriber. When a subscriber dials into the IVR subscriber registration system in step 462, the IVR subscriber registration system responds in step 464 by receiving the ANI (caller ID) for the caller from the telephone network. Subsequently, the IVR subscriber registration system in step 466 prompts the caller for all the required information for subscriber information, and the caller delivers this information via DTMF or touch tone data entry. Thereafter, in step 468 a data packet conforming to Table 1 is built and submitted to database query system 112. This data packet will cause database query system 112 to issue a test notification to the new subscriber. Thereafter, the IVR subscriber registration system disconnects in step 470 from and returns to step 460 to wait for a new call from another new subscriber.

Referring now to FIG. 4D, the process performed by web server 114 in receiving alert notifications can be more fully explained. In the first step 480, web server 114 waits for an Internet connection. In step 482 a user connects to a web server 114, typically using a hypertext transfer protocol (HTTP) application. In step 484, web server 114 receives an Internet protocol (IP) address for the user from the Internet connection. In step 486, the user is prompted to enter a login identifier and password via a hypertext markup language (HTML) form, otherwise known as a world wide web-based form. After the user has entered the requested information in step 488, the IP address, login ID and password provided by the user are compared to those of authorized users. If this information does not match any authorized user, then in step 490 the user is notified (via a subsequent HTML page) that access is denied, and the connection to the user's computer is disconnected. If the connection is allowed, then in step 492 web server 114 determines the notification text that the user is permitted to create. In step 494 the user is prompted again, using the web based form, for a notification type. The provided notification type is then evaluated in step 496 to determine if it is a type allowed by the server for the user. If so, then in step 498, additional web based forms are used to prompt the user for relevant information for the notification, such as geographic information, heading and speed information or other information discussed above. In step 500, a data packet is generated (using the format of Table I) reflecting the indicated notification type and all provided information. In step 502 this packet is sent to the database query system 112.

Returning to step 496, if the identification type identified by the user in step 494 is not permitted to the user, then the user is notified in step 504 that this notification type is disallowed. After step 504 or step 502, the user is prompted 506 via web based HTML form, to indicate whether additional notifications or affected areas are to be entered. If there are additional areas or notifications, the user may indicate as such by clicking an appropriate area in the displayed form, in which case the user is returned to step 494 and prompted for another notification type. If the user indicates that no additional notifications or affected areas are needed, then in step 508 the connection to the users computer is terminated.

Referring to FIG. 4E, the process for subscriber enrollment in the system via web server 114 can be understood in greater detail. In a first step 510, web server 114 waits for an Internet connection to be made by a new subscriber. When a connection is made (step 512), the IP address of the user is received from the Internet (step 514) and (step 516) the

20

user is prompted to enter required information for subscription to the system utilizing a web based form. The information requested includes (as described with reference to FIG. 3C), home address information, billing information and other safety or alert preference information. After this information has been received and stored by web server 114, a data packet (formatted in accordance with Table I) is created in step 518 and sent to the database query system 112. This data packet causes database query system 112 to initiate a test notification to the newly enrolled subscriber. After this data packet has been set in step 518, in step 520 the Internet connection to the user is disconnected and processing returns to step 510 to wait for another subscriber to connect to web server 114.

Referring now to FIG. 4F, greater detail can be provided on the process performed by database query system 112 in response to data packets from notification parsing system 106, web server 114 and IVR system 116. In a first step 530, database query system 112 waits for a data packet formatted in accordance with Table I from the notification parsing system 106, IVR system 116 or web server 114. When a packet is received (step 532), the packet is evaluated and the type of notification it requests is evaluated. Based upon the type of notification, different actions are performed as explained below with reference to FIGS. 5 through 11. If the notification is a static area notification, then a static area process 534 is performed as is elaborated below with reference to FIGS. 5A and 5B. If the notification is a radius notification, then a radius process 536 is performed as elaborated below with reference to FIGS. 6A and 6B. If the notification is a vector notification, then a vector process 538 is performed as elaborated below with reference to FIGS. 7A and 7B. If the notification is a shoreline notification, then a shoreline process 540 is performed as described below with reference to FIGS. 8A and 8B. If the notification is a river notification, then a river process 542 is performed as described below with reference to FIGS. 9A and 9B. If the notification type is a wind dispersion notification, then a wind dispersion process 544 is performed as described below with reference to FIGS. 10A and 10B. If a school or organization-related alert notification is requested, then a school or organization alert process 546 is performed as described below with reference to FIG. 11.

The processes 534 through 546 result in generation of station identifiers to which alert notifications are to be directed. After these processes are complete (step 550), a first of the selected station identifiers is selected, and in step 552 the type of the station identifier is evaluated. If in step 554 the station identifier is an email address, TCP/IP address, or Internet accessible pager, then in step 556 a data packet conforming to Table III above, and including the station identifier, is sent to web server 114 for ultimate delivery to the appropriate address. If in step 558 the station identifier is a telephone number or a numeric pager number, then in step 560 a data packet conforming to Table III above is sent to switch host 130 for subsequent delivery to the telephone or numeric pager number. Thereafter, in step 562 it is determined whether there is another station identifier that was previously identified in one of the processes 534 through 546. If so, then in step 564 the next station identifier is selected and processing returns to step 552 to determine the type of the next station identifier. If in step 562, there is no additional station identifiers, then in step 566 the received data packet which began the process is archived and processing returns to step 530 to wait for another data packet.

Referring now to FIG. 4G, the process performed by web server 114 in processing data packets received from the

21

database query system 112 can be further explained. In a first step 570, web server 114 receives a data packets from the database query system 112. Step 570 may be performed in background to other steps in FIG. 4G so that receipt data packets may continue while data packets are being processed.

When one or more data packets have been received for processing, in step 572, the received data packets are evaluated to select the data packet having the highest priority level. This highest priority data packet is then used to generate an alert. The type of alert generated is based upon the station identifier provided in the data packet. If the data packet provides an email address (step 574), then in step 576, an email message is generated directed to that email address including a textual message describing the alert condition. The message is then sent (step 578) and processing returns to step 572. If the station identifier is a TCP/IP address (step 580), then in step 582 web server 114 connects to this TCP/IP address and delivers a textual alert message in a manner that is appropriate to the Internet application in use. Then, in step 584, the connection is disconnected and processing returns to step 572. If the data packet selected includes a Internet address for a numeric pager service (step 586), then in step 588 a connection is established to the pager service and the appropriate numeric code is delivered for the alert type identified by the data packet. In step 590 the connection to the page service is disconnected and processing returns to step 572. If a data packet identifies address for an alpha numeric pager server (step 592), then in step 594 a connection is established to the pager service and a textual alert is delivered to the pager service. Then in step 596, the connection to the pager service is disconnected and the processing returns to step 572.

Referring now to FIG. 4H, the process performed by the switch host 130 in, response to data packets received from database query system 112 can be explained in further detail. As described above, data packets can be received 600 from the database query system 112 in background so that the remaining steps of FIG. 4H can be performed as packets are continuously received. In a first step 602 the data packets that have been received are evaluated to select the data packet having the highest priority level. After a packet has been selected in step 604, switch host 130 waits for an idle out dial channel in switch 132. When an idle channel is available, in step 606 a command is sent to switch 132 to out dial to the station identifier identified in the selected packet. Subsequently, in step 608, the switch will report the call status to the switch host as the call is performed. If the call is answered (step 610), then in step 612 the switch host 130 delivers commands to switch 132 to play prerecorded messages corresponding to the alert type of the selected packet and then to hang up the established connection. If there is no answer or the dialed number is busy (step 614), then the packet is marked for retry (step 616). After either of step 612 or 616, in step 618 a detailed call record is inserted in the subscriber history table 194 indicating the results of the call that was placed, i.e., whether the call was answered or not answered or busy. Processing then returns to step 602 to select another data packet for delivery to a subscriber.

Referring now to FIGS. 5A and 5B, the static area process can be described in greater detail. In the static area process, in step 620 database query system 112 retrieves all station identifiers of subscribers located in the area specified in the alert, which may be a state, county, city, zip code, or other definable region. Then in step 622 those station IDs are prioritized based upon the information registered for the subscriber. FIG. 5A illustrates exemplary counties and zip codes that may be utilized in a typical static area process.

22

Referring now to FIGS. 6A and 6B, the operation of a radius process 536 of the database query system 112 can be explained in further detail. In a radius process, in step 624 all station identifiers for subscribers within an identified range of a specific geographic point are retrieved. Then in step 626, the retrieved station identifiers are prioritized based upon information registered by the subscribers. As seen in FIG. 6A, a radius routine will notify subscribers within one of a number of predefined circular regions and mileages 628 surrounding a specific geographic position, which may be identified by GPS coordinates, latitude and longitude, or even a zip codes or postal address. In the case of a zip code, which have regions such as are shown in FIG. 6A, the geographic center of the zip code region will be used as the geographic position from which to compute the circular region 628.

Referring now to FIGS. 7A and 7B, the operations of a vector process 538 performed by database query system 112 can be further explained. As seen in FIG. 7A, in this process the number of geographic locations are computed, and from these locations subscribers located within a radius of those locations are identified for notification of the alert condition. Each radial region 629 identified during this process is known as a "band" of geographic locations. The vector process is performed for a defined number of bands and a defined time frame.

A first step 630 in the vector process is to determine a mileage range that can be covered by the hazard (e.g., tornado) in the identified time frame based upon the identified forward speed. Then in step 632, all station identifiers for subscribers that are within the calculated range of the identified geographic point are retrieved. In step 634 and step 636, variables are initialized for later use in collecting additional station identifiers. Specifically in step 634, a current geographic point is set to be the identified geographic point in the alert notification packet. In step 636, the band number is initialized to a value of one.

In a subsequent loop of steps 638, 640, 642, 644 and 646, geographic regions are calculated, and then station IDs for subscribers within those geographic regions are identified. In a first step 638, the geographic region is calculated based upon the current band number and current geographic point. This involves steps similar to those described above with reference to steps 630 and 632 in which a mileage range is computed and then station IDs for subscribers within that mileage range of the current geographic point are identified. After 638, in step 640 all station identifiers that are not previously enqueued, that are within the geographic region identified in step 638 are enqueued. In step 642, the current band number is incremented. And in step 644, it is determined whether there are additional bands to be included in the vector routine. If so, then in step 646 a new current geographic point is computed based upon the existing geographic point and the heading, time frame and identified number of bands provided in the alert notification. This causes the center of subsequent regions to move along the heading identified by the alert notification. After step 646, processing returns to step 638 to calculate a new geographic region and queue additional station identifiers.

After all bands have been completed, the processing proceeds from step 644 to step 648 in which the band number again is initialized to a value of one. Next, in step 650 station IDs identified in the current band number are prioritized based upon subscriber registered information. Thereafter, in step 652 it is determined whether there are more bands, and if so then in step 654 the band number is incremented. After all bands have been processed then the

vector process is completed. These final steps 650, 652 and 654 cause station identifiers to be prioritized such that those in the first band, which are nearest to the hazard or threat, are prioritized before those in subsequent bands.

Referring now to FIGS. 8A and 8B, the shoreline process 540 of the database query system 112 can be explored. In a first step 660, all station identifiers within a given coastal area are retrieved. Then in step 662, those station identifiers are prioritized based upon flood zone coding of the corresponding subscriber records. Then in step 664, station identifiers are further prioritized based upon subscriber registered information. As seen in FIG. 8A, this process permits alert notifications to be delivered to multiple subscribers who are threatened by a coastal hazard such as a tidal wave, high seas or hurricane.

Referring now to FIGS. 9A and 9B, the river routine 542 of the database query system 112 can be elaborated. In the first step 670, all station identifiers within given riverbank area are retrieved. Then in step 672, those station identifiers are prioritize based upon flood zone code in the subscriber information. Subsequently, in step 674 those station identifiers are again prioritized based upon other registered information from subscribers. As seen in FIG. 9A, this process permits all subscribers within a flood plane or threatened by flooding in a river area to be advised of an emergency condition.

Referring now to FIGS. 10A and 10B, details of the wind dispersion process 544 of the database query system 112 can be elaborated. In this process, in the first step 680 a mileage range is computed, representing the range that a toxic release will cover in the identified time frame based upon the identified wind speed. Next, in step 682, all station identifiers for subscribers within the calculated range of the identified geographic point are retrieved. In step 684 and step 686, variables are initialized for a loop of steps 688, 690, 692, 694 and 696 in which station identifiers are selected from those retrieved in step 682. In step 684, a current geographic point is initialized to be the geographic point identified in the alert notification packet. In step 686, a band number is initialized to a value of one. Subsequently in step 688, a geographic region is calculated based upon the current band number and the current geographic point. This calculation involves wind dispersion formulas known in the art which identify areas in which a release at a given point will be dispersed, given a current wind direction and speed. Subsequently, in step 690, all station identifiers that have not been previously enqueued and that are within the identified geographic region are enqueued. Thereafter, in step 692 the current band number is incremented and step 694 it is determined whether more bands are to be processed. If there are more bands to process, in step 696 a new current geographic point is computed from the previous geographic point the identified wind speed, time frame and number of bands identified in the alert notification packet. Processing then returns to step 688 to complete another band.

After all bands have been processed, in step 698 the band number is again initialized to a value one to permit prioritization through step 700, 702 and 704. In step 700, all station identifiers for current band number are prioritized based upon subscriber registered information. In step 702, it is determined whether there are additional bands. If so, in step 704 the current band number is incremented and processing returns to step 700 to prioritize station IDs for the new current band number. After all bands have been prioritized in this manner, processing is complete. These last three steps, 700, 702 and 704 permit all station identifiers to be prioritized such that station identifiers identified in a given

band nearer to the source of the toxic release, are prioritized first and prior to station identifiers identified in additional bands.

Referring now to FIG. 11, details of the school or organization process 546 of the database query system 112 can be explained. In a first step 710, the school or organization identifier of the alert notification is used to locate station identifiers for all subscribers that have registered a matching school or organization identifier. In a second step 712, the retrieved station identifiers are prioritized based upon the subscribers' registered information and enqueued.

While the present invention has been illustrated by a description of various embodiments and while these embodiments have been described in considerable detail, it is not the intention of the applicants to restrict or in any way limit the scope of the appended claims to such detail. Additional advantages and modifications will readily appear to those skilled in the art.

For example, the location information found in the subscriber information tables of FIG. 3C need not be static. Several organizations have recently proposed technologies for tracking the movement of communication equipment such as cellular telephones. Technologies of this kind are described in U.S. Pat. Nos. 5,945,944, 5,663,734, 5,781,156, 5,825,327, 5,831,574, 5,841,396, 5,812,087, 5,874,914 and 5,884,214, all of which are hereby incorporated herein by reference in their entirety.

Consistent with principles of the present invention, the above-referenced technology may be utilized to dynamically update location information found in the subscriber information tables of FIG. 3C, to reflect the current position of a subscriber's cellular phone or other wireless communication device. Then if the subscriber's communication device is within a threatened area that has been identified in the manner described above, the subscriber will receive an alert notification in the manner described above.

Mobile wireless devices that can be tracked for the purposes of providing alert notifications, are not limited to cellular telephones, but could also include personal digital assistant (PDA) devices, or laptop or palmtop computers having wireless communications capabilities. Furthermore, alerts may be delivered to the mobile wireless device via technologies other than voice telephone, such as via paging services (voice or text), or via Internet or e-mail communications as noted above.

The invention in its broader aspects is therefore not limited to the specific details, representative apparatus and method, and illustrative example shown and described. Accordingly, departures may be made from such details without departing from the spirit or scope of applicant's general inventive concept.

What is claimed is:

1. A system for providing a warning signal to a plurality of persons and/or locations on a geographic basis, comprising:

a database and a tandem database each storing a plurality of communications identifiers, and storing an association of each said identifier with a geographic location thereof,

a computer system and a tandem computer system each responding to a command identifying a geographic area and a warning to be provided to said geographic area, by comparing geographic locations of communications identifiers with said geographic area, retrieving individual matching communications identifiers and establishing a communications connection in response to the

25

command using each retrieved communications identifier and delivering said warning via said communications connection,

the tandem database and tandem computer system in communication with the database and computer system and sharing information regarding warnings to be provided by either of them,

wherein said comparing and retrieving steps are performed after receipt of said command.

2. The system of claim 1 wherein said system is located in a geographic location distant from at least some of the geographic locations identified within said database.

3. The system of claim 1 wherein said computer system comprises a host computer and a telecommunication interface for receiving telephone numbers and audio messages from said host computer for delivery to said telephone numbers.

4. The system of claim 1 wherein said communications identifiers are identifiers for use with a publicly switched telephonic communications system.

5. The system of claim 4 wherein said communications identifiers are telephone numbers.

6. The system of claim 5 wherein said telephone numbers comprise an area code, exchange number and directory number.

7. The system of claim 6 wherein said telephone numbers further comprise a country code.

8. The system of claim 1 wherein said communications identifiers are electronic mail addresses for use with a computer network.

9. The system of claim 8 wherein said computer network is a global computer network.

10. The system of claim 9 wherein said computer network is the Internet.

11. The system of claim 1 wherein said communications identifiers are Internet protocol addresses for use with an Internet protocol computer network.

12. The system of claim 11 wherein said computer network is the Internet.

13. The system of claim 1 wherein said computer system further comprises a threat identification system for receiving threat information, said threat identification system evaluating said threat information to identify a geographic area subject to a threat and in response generate said command identifying said geographic area and a warning related to the identified threat.

14. The system of claim 13 wherein said threat identification system identifies weather threats applicable to said geographic area.

15. The system of claim 14 wherein said threat identification system comprises a communications connection to a National Weather Service information service.

16. The system of claim 15 wherein said threat identification system receives text information describing weather conditions and comprises a parser for parsing said text information to identify weather threats and geographic areas to which said threats apply.

17. The system of claim 1 wherein said warning signal identifies a weather threat applicable to said geographic area.

18. The system of claim 1 wherein said warning signal warns of hazardous atmospheric conditions applicable to said geographic area.

19. The system of claim 18 wherein said warning signal warns of poor air quality in said geographic area.

20. The system of claim 18 wherein said warning signal warns of a toxic release in said geographic area.

21. The system of claim 18 wherein said warning signal warns of harmful radiation in said geographic area.

26

22. A system for providing an atmospheric condition announcement to a plurality of persons and/or locations, comprising:

a database and a tandem database each storing a plurality of communications identifiers for persons and/or locations in need of atmospheric condition information, and storing an association of each said identifier with identifications of atmospheric condition information to be provided to those persons and/or locations,

a computer system and a tandem computer system each responding to a command identifying an atmospheric condition to be announced to said persons and/or locations, by analyzing identifications of atmospheric conditions in said database to identify target persons and/or locations to be notified of said atmospheric condition, retrieving from said database, individual matching communications identifiers associated with said target persons and/or locations, and establishing a communications connection using each retrieved communications identifier and delivering an announcement of said atmospheric condition via said communications connection,

the tandem database and tandem computer system in communication with the database and computer system and sharing information regarding announcements to be provided by either of them,

wherein said analyzing and retrieving steps are performed after receipt of said command.

23. The system of claim 22 wherein said system is located in a geographic location distant from at least some of the persons and/or locations identified within said database.

24. The system of claim 22 wherein said computer system comprises a host computer and a telecommunication interface for receiving telephone numbers and audio messages from said host computer for delivery to said persons and/or locations.

25. The system of claim 22 wherein said communications identifiers are identifiers for use with a publicly switched telephonic communications system.

26. The system of claim 25 wherein said communications identifiers are telephone numbers.

27. The system of claim 26 wherein said telephone numbers comprise an area code, exchange number and directory number.

28. The system of claim 27 wherein said telephone numbers further comprise a country code.

29. The system of claim 22 wherein said communications identifiers are electronic mail addresses for use with a computer network.

30. The system of claim 29 wherein said computer network is a global computer network.

31. The system of claim 30 wherein said computer network is the Internet.

32. The system of claim 22 wherein said communications identifiers are Internet protocol addresses for use with an Internet protocol computer network.

33. The system of claim 32 wherein said computer network is the Internet.

34. The system of claim 22 wherein said computer system further comprises an atmospheric event identification system for receiving atmospheric event information, said atmospheric event identification system evaluating said atmospheric event information to identify persons and/or locations interested in an atmospheric event and in response generate said command identifying said announcement related to the identified event.

35. The system of claim 34 wherein said atmospheric event identification system identifies weather threats.

27

36. The system of claim 35 wherein said atmospheric event identification system comprises a communications connection to a National Weather Service information service.

37. The system of claim 36 wherein said atmospheric event identification system receives text information describing weather conditions and comprises a parser for parsing said text information to identify weather events.

38. The system of claim 22 wherein said atmospheric condition announcement identifies a weather event applicable to persons and/or locations receiving the message.

39. The system of claim 22 wherein said atmospheric condition announcement warns of hazardous atmospheric conditions applicable to said geographic area.

40. The system of claim 39 wherein said atmospheric condition announcement warns of poor air quality in said geographic area.

41. The system of claim 39 wherein said atmospheric condition announcement warns of a toxic release in said geographic area.

42. The system of claim 39 wherein said atmospheric condition announcement warns of harmful radiation in said geographic area.

43. A system for providing time-sensitive announcements to a plurality of persons and/or locations, comprising:

a database and a tandem database each storing a plurality of communications identifiers, and storing an association of each communications identifier with data useful for determining whether particular time-sensitive information is to be communicated to said communications identifier,

a computer system and a tandem computer system each responding to a command identifying an announcement to be announced to interested persons and/or locations, by comparing said command to said data useful for determining whether particular time-sensitive information is to be communicated to said persons and/or locations, retrieving from said database, individual matching communications identifiers associated with persons and/or locations to whom said time-sensitive announcement is to be communicated in response to the command, and establishing a communications connection using each retrieved communications identifier and delivering said time-sensitive announcement via said communications connection,

the tandem database and tandem computer system in communication with the database and computer system and sharing information regarding announcements to be provided by either of them,

wherein said comparing and retrieving steps are performed after receipt of said command.

44. The system of claim 43 wherein said system is located in a geographic location distant from at least some of the persons and/or locations reached by the communications identifiers identified within said database.

45. The system of claim 43 wherein said computer system comprises a host computer and a telecommunication interface for receiving telephone numbers and audio messages from said host computer for delivery to said telephone numbers.

46. The system of claim 43 wherein said communications identifiers are identifiers for use with a publicly switched telephonic communications system.

47. The system of claim 46 wherein said communications identifiers are telephone numbers.

48. The system of claim 47 wherein said telephone numbers comprise an area code, exchange number and directory number.

28

49. The system of claim 48 wherein said telephone numbers further comprise a country code.

50. The system of claim 43 wherein said communications identifiers are electronic mail addresses for use with a computer network.

51. The system of claim 50 wherein said computer network is a global computer network.

52. The system of claim 51 wherein said computer network is the Internet.

53. The system of claim 43 wherein said communications identifiers are Internet protocol addresses for use with an Internet protocol computer network.

54. The system of claim 53 wherein said computer network is the Internet.

55. The system of claim 43 wherein said computer system further comprises an event identification system for receiving event information, said event identification system evaluating said event information to identify communications identifiers for persons and/or locations interested in an event and in response generate said command identifying said announcement related to the identified event.

56. The system of claim 55 wherein said event identification system identifies weather threats.

57. The system of claim 56 wherein said event identification system comprises a communications connection to a National Weather Service information service.

58. The system of claim 57 wherein said event identification system receives text information describing weather conditions and comprises a parser for parsing said text information to identify weather threats.

59. The system of claim 43 wherein said announcement identifies a weather threat applicable to persons and/or locations receiving the message.

60. The system of claim 43 wherein said announcement warns of hazardous atmospheric conditions applicable to a geographic area.

61. The system of claim 60 wherein said announcement warns of poor air quality in said geographic area.

62. The system of claim 60 wherein said announcement warns of a toxic release in said geographic area.

63. The system of claim 60 wherein said announcement warns of harmful radiation in said geographic area.

64. The system of claim 43 wherein said announcement identifies unavailability of a public service at a particular time.

65. The system of claim 64 wherein said announcement identifies a school closing.

66. The system of claim 43 wherein said announcement identifies a traffic condition.

67. The system of claim 43 wherein said announcement identifies an unscheduled closing of a public place.

68. The system of claim 43 wherein said announcement identifies a change in a regularly scheduled activity.

69. The system of claim 68 wherein said regularly scheduled activity is the movements of a public transportation system.

70. The system of claim 68 wherein said regularly scheduled activity is the hours of business of a place of public accommodation.

71. The system of claim 1 wherein said computer system further establishes a prioritization of communications identifiers using data in said database, and establishes said communications connections in a prioritized order.

72. The system of claim 71 wherein data in said database includes characteristics of a person and/or location addressed by a communications identifier, and prioritization of communications identifiers includes determining persons

and/or locations most likely to be adversely affected by the subject matter of said warning.

73. The system of claim 72 wherein said data in said database enables distinction of buildings at locations addressed by communications identifiers.

74. The system of claim 73 wherein said data in said database enables distinction of the heights of buildings at locations addressed by communications identifiers.

75. The system of claim 73 wherein said data in said database enables distinction of temporary and permanent buildings at locations addressed by communications identifiers.

76. The system of claim 72 wherein said data in said database enables distinction of locations susceptible to flooding that are addressed by communications identifiers.

77. The system of claim 71 wherein said data in said database includes characteristics of persons and/or locations addressed by communications identifiers, and prioritization of communications identifiers includes determining persons most likely to be adversely affected by the subject matter of said warning.

78. The system of claim 77 wherein said data in said database enables distinction of persons requiring special assistance to seek shelter that are addressed by communications identifiers.

79. The system of claim 77 wherein said data in said database enables distinction of persons particularly susceptible to respiratory distress that are addressed by communications identifiers.

80. The system of claim 22 wherein said computer system further establishes a prioritization of communications identifiers using data in said database, and establishes said communications connections in a prioritized order.

81. The system of claim 80 wherein data in said database includes characteristics of a person and/or location addressed by a communications identifier, and prioritization of communications identifiers includes determining persons and/or locations most likely to be adversely affected by the atmospheric condition that is the subject of said announcement.

82. The system of claim 81 wherein said data in said database enables distinction of buildings at locations addressed by communications identifiers.

83. The system of claim 82 wherein said data in said database enables distinction of the heights of buildings at locations addressed by communications identifiers.

84. The system of claim 82 wherein said data in said database enables distinction of temporary and permanent buildings at locations addressed by communications identifiers.

85. The system of claim 1 wherein said data in said database enables distinction of locations susceptible to flooding that are addressed by communications identifiers.

86. The system of claim 80 wherein said data in said database includes characteristics of persons and/or locations addressed by communications identifiers, and prioritization of communications identifiers includes determining persons and/or locations most likely to be adversely affected by the atmospheric condition that is the subject of said announcement.

87. The system of claim 86 wherein said data in said database enables distinction of persons requiring special assistance to seek shelter that are addressed by communications identifiers.

88. The system of claim 86 wherein said data in said database enables distinction of persons particularly susceptible to respiratory distress that are addressed by communications identifiers.

89. The system of claim 43 wherein said computer system further establishes a prioritization of communications identifiers using data in said database, and establishes said communications connections in a prioritized order.

90. The system of claim 89 wherein data in said database includes characteristics of a person and/or location addressed by a communications identifier, and prioritization of communications identifiers includes determining persons and/or locations most likely to be adversely affected by the subject matter of said announcement.

91. The system of claim 90 wherein said data in said database enables distinction of buildings at locations addressed by communications identifiers.

92. The system of claim 91 wherein said data in said database enables distinction of the heights of buildings at locations addressed by communications identifiers.

93. The system of claim 91 wherein said data in said database enables distinction of temporary and permanent buildings at locations addressed by communications identifiers.

94. The system of claim 90 wherein said data in said database enables distinction of locations susceptible to flooding that are addressed by communications identifiers.

95. The system of claim 89 wherein said data in said database includes characteristics of persons and/or locations addressed by communications identifiers, and prioritization of communications identifiers includes determining persons most likely to be adversely affected by the subject matter of said announcement.

96. The system of claim 95 wherein said data in said database enables distinction of persons requiring special assistance to seek shelter that are addressed by communications identifiers.

97. The system of claim 95 wherein said data in said database enables distinction of persons particularly susceptible to respiratory distress that are addressed by communications identifiers.

98. The system of claim 1 wherein said database stores first and second communications identifiers associated with separately identified geographic locations within a given geographic area.

99. The system of claim 98 wherein said system responds to a command identifying said given geographic area by retrieving said first and second communications identifiers.

100. The system of claim 1 wherein said database stores, for each of a plurality of warning types, data relevant to each said warning type.

101. The system of claim 100 wherein said database stores association of communications identifiers with warning types, said command identifies a warning type, and said computer system compares warning types of communications identifiers with a warning type of a command and determines whether there is a match.

102. The system of claim 100 wherein said database stores an indication of system users authorized to generate a warning type, said command identifies a warning type, and said system determines whether a user originating a command is authorized to generate a warning of the type identified by a command as part of responding to the command.

103. The system of claim 13 wherein said threat identification system projects a path expected to be followed by a threat and identifies a geographic area subject to said threat based on the projected path.

104. The system of claim 103 wherein said threat identification system is responsive to said path and status information on previously executed commands to discontinue issuance of warnings based on said command.

31

105. The system of claim 103 wherein said threat identification system is responsive to said path and status information on previously executed commands to identify communications identifiers not identified from previously executed commands.

106. The system of claim 13 wherein said threat identification system evaluates one or more of

- a location of a threat
- a speed of a threat
- a heading of a threat
- a shape of a threat

to identify a geographic area subject to a threat.

107. The system of claim 14 wherein said threat identification system comprises a communications connection to a weather radar system.

108. The system of claim 8 wherein said electronic mail addresses correspond to text pagers.

109. The system of claim 1 wherein said computer system is further responsive to identifying a location of a mobile device addressed by a communications identifier, by storing in said database an association of said communications identifier with said location.

110. The system of claim 109 wherein said computer system establishes a communications connection and delivers a warning to a mobile device which has been identified in tracking information to be at a location which matches a geographic area identified in a command that identifies said warning.

111. The system of claim 71 wherein said prioritization is based upon the proximity of a threat to the geographic locations associated with said communications identifiers.

112. The system of claim 71 wherein said computer system establishes a prioritization using a criterion for public switched telecommunications network resources.

113. The system of claim 71 wherein said prioritization provides enhanced priority to communications identifiers of persons and/or locations that will or may provide said warning to other persons and/or locations.

114. The system of claim 73 wherein said computer system prioritizes buildings based upon adequacy of shelter provided by said buildings.

115. The system of claim 73 wherein said computer system prioritizes more populous buildings before less populous buildings.

116. The system of claim 73 wherein said computer system prioritizes buildings based upon their purposes.

117. The system of claim 116 wherein said computer system prioritizes buildings that cater to one or more of elderly, juvenile, infirm or ill persons before buildings catering to the general public.

118. The system of claim 78 wherein said data in said database enables distinction of persons requiring special assistance due based on one or more of an elderly, juvenile, infirm or ill condition of such persons.

119. The system of claim 22 wherein said database stores first and second communications identifiers associated with separately identified atmospheric conditions.

120. The system of claim 119 wherein said system responds to a command identifying an atmospheric condition matching the atmospheric conditions associated with said first and second communications identifiers by retrieving said first and second communications identifiers.

121. The system of claim 22 wherein said database stores, for each of a plurality of atmospheric condition types, data relevant to each said atmospheric condition type.

122. The system of claim 121 wherein said database stores association of communications identifiers with atmo-

32

spheric condition types, said command identifies an atmospheric condition type, and said computer system compares atmospheric condition types of communications identifiers with an atmospheric condition type of a command and determines whether there is a match.

123. The system of claim 121 wherein said database stores an indication of system users authorized to annoyances an atmospheric condition, said command identifies an atmospheric condition, and said system determines whether a user originating a command is authorized to announce atmospheric condition identified by a command as part of responding to the command.

124. The system of claim 34 wherein said atmospheric event identification system projects a path expected to be followed by an atmospheric condition and identifies persons and/or locations subject to said atmospheric condition based on the projected path.

125. The system of claim 124 wherein said event identification system is responsive to said path and status information on previously executed commands to discontinue issuance of announcements based on previously identified commands.

126. The system of claim 124 wherein said event identification system is responsive to said path and status information on previously executed commands to identify communications identifiers not identified from previously executed commands.

127. The system of claim 34 wherein said atmospheric event identification system evaluates one or more of

- a location of an atmospheric condition
- a speed of an atmospheric condition
- a heading of an atmospheric condition
- a shape of an atmospheric condition
- to identify persons and/or locations subject to an atmospheric condition.

128. The system of claim 35 wherein said threat event identification system comprises a communications connection to a weather radar system.

129. The system of claim 29 wherein said electronic mail addresses correspond to text pagers.

130. The system of claim 22 wherein said computer system is further responsive to identifying a location of a mobile device addressed by a communications identifier, by storing in said database an association of said communications identifier with said location.

131. The system of claim 130 wherein said computer system establishes a communications connection and delivers an announcement to a mobile device which has been identified in tracking information to be at a location which matches a geographic area identified in a command that identifies said announcement.

132. The system of claim so wherein said announcement relates to an atmospheric threat, and said prioritization is based upon the proximity of the threat to the geographic locations associated with said communications identifiers.

133. The system of claim 80 wherein said computer system establishes a prioritization using a criterion for public switched telecommunications network resources.

134. The system of claim 80 wherein said prioritization provides enhanced priority to communications identifiers of persons and/or locations that will or may provide said announcement to other persons and/or locations.

135. The system of claim 82 wherein said computer system prioritizes buildings based upon adequacy of shelter provided by said buildings.

136. The system of claim 82 wherein said computer system prioritizes more populous buildings before less populous buildings.

137. The system of claim 82 wherein said computer system prioritizes buildings based upon their purposes.

138. The system of claim 137 wherein said computer system prioritizes buildings that cater to one or more of elderly, juvenile, infirm or ill persons before buildings catering to the general public.

139. The system of claim 87 wherein said data in said database enables distinction of persons requiring special assistance due based on one or more of an elderly, juvenile, infirm or ill condition of such persons.

140. The system of claim 43 wherein said database stores first and second communications identifiers associated with separately identified data useful for determining whether particular information is to be communicated to said communications identifiers.

141. The system of claim 140 wherein said system responds to a command identifying an announcement matching said data useful for determining whether particular information is to be communicated to said communications identifiers by retrieving said first and second communications identifiers.

142. The system of claim 43 wherein said database stores, for each of a plurality of announcement types, data relevant to each said announcement type.

143. The system of claim 142 wherein said database stores association of communications identifiers with announcement types, said command identifies an announcement type, and said computer system compares announcement types of communications identifiers with an announcement type of a command and determines whether there is a match.

144. The system of claim 142 wherein said database stores an indication of system users authorized to generate an announcement type, said command identifies an announcement type, and said system determines whether a user originating a command is authorized to generate an announcement of the type identified by a command as part of responding to the command.

145. The system of claim 55 wherein said event identification system projects a path expected to be followed by an atmospheric condition and identifies a geographic area subject to said atmospheric condition based on the projected path.

146. The system of claim 145 wherein said event identification system is responsive to said path and status information on previously executed commands to discontinue issuance of announcements based on previously identified commands.

147. The system of claim 124 wherein said event identification system is responsive to said path and status information on previously executed commands to identify communications identifiers not identified from previously executed commands.

148. The system of claim 55 wherein said event identification system evaluates one or more of

a location of an event condition

a speed of an event condition

a heading of an event condition

a shape of an event condition

to identify a geographic area subject to an event condition.

149. The system of claim 56 wherein said event identification system comprises a communications connection to a weather radar system.

150. The system of claim 50 wherein said electronic mail addresses correspond to text pagers.

151. The system of claim 43 wherein said computer system is further responsive to identifying a location of a

mobile device addressed by a communications identifier, by storing in said database an association of said communications identifier with said location.

152. The system of claim 151 wherein said computer system establishes a communications connection and delivers an announcement to a mobile device which has been identified in tracking information to be at a location which matches a geographic area identified in a command that identifies said announcement.

153. The system of claim 89 wherein said announcement relates to an atmospheric threat, and said prioritization is based upon the proximity of the threat to the geographic locations associated with said communications identifiers.

154. The system of claim 89 wherein said computer system establishes a prioritization using a criterion for public switched telecommunications network resources.

155. The system of claim 89 wherein said prioritization provides enhanced priority to communications identifiers of persons and/or locations that will or may provide said announcement to other persons and/or locations.

156. The system of claim 91 wherein said computer system prioritizes buildings based upon adequacy of shelter provided by said buildings.

157. The system of claim 91 wherein said computer system prioritizes more populous buildings before less populous buildings.

158. The system of claim 91 wherein said computer system prioritizes buildings based upon their purposes.

159. The system of claim 158 wherein said computer system prioritizes buildings that cater to one or more of elderly, juvenile, infirm or ill persons before buildings catering to the general public.

160. The system of claim 96 wherein said data in said database enables distinction of persons requiring special assistance due based on one or more of an elderly, juvenile, infirm or ill condition of such persons.

161. The system of claim 1 wherein said tandem computer system and tandem database are located in a geographic location distant from said computer system and database.

162. The system of claim 1 wherein said tandem computer system and tandem database are located in a common geographic location with said computer system and database.

163. The system of claim 1 wherein said computer systems communicate to task one of them with handling each warning delivery.

164. The system of claim 1 wherein, in the event of a failure of one of said databases or computer systems, the other database or computer system handles all outstanding warning deliveries.

165. The system of claim 1 wherein said computer systems communicate to synchronize data in said databases.

166. The system of claim 165 wherein said computer system tasks said tandem computer system to concurrently deliver warnings with said computer system.

167. The system of claim 165 wherein said computer system delivers to said tandem computer system one or more of a command, identifier selection criteria for a command, a warning, prioritization information regarding communications identifiers, and communications identifiers.

168. The system of claim 165 wherein said computer systems exchange status and recipient response information regarding the delivery of warnings.

169. The system of claim 22 wherein said tandem computer system and tandem database are located in a geographic location distant from said computer system and database.

35

170. The system of claim 22 wherein said tandem computer system and tandem database are located in a common geographic location with said computer system and database.

171. The system of claim 22 wherein said computer systems communicate to task one of them with handling each announcement delivery.

172. The system of claim 22 wherein, in the event of a failure of one of said databases or computer systems, the other database or computer system handles all outstanding announcement deliveries.

173. The system of claim 22 wherein said computer systems communicate to synchronize data in said databases.

174. The system of claim 173 wherein said computer system tasks said tandem computer system to concurrently deliver announcements with said computer system.

175. The system of claim 173 wherein said computer system delivers to said tandem computer system one or more of a command, identifier selection criteria for a command, an announcement, prioritization information regarding communications identifiers, and communications identifiers.

176. The system of claim 173 wherein said computer systems exchange status and recipient response information regarding the delivery of announcements.

177. The system of claim 43 wherein said tandem computer system and tandem database is located in a geographic location distant from said computer system and database.

178. The system of claim 43 wherein said tandem computer system and tandem database are located in a common geographic location with said computer system and database.

179. The system of claim 43 wherein said computer systems communicate to task one of them with handling each announcement delivery.

180. The system of claim 43 wherein, in the event of a failure of one of said databases or computer systems, the other database or computer system handles all outstanding announcement deliveries.

181. The system of claim 43 wherein said computer systems communicate to synchronize data in said databases.

182. The system of claim 181 wherein said computer system tasks said tandem computer system to concurrently deliver announcements with said computer system.

183. The system of claim 181 wherein said computer system delivers to said tandem computer system one or more of a command, identifier selection criteria for a command, an announcement, prioritization information regarding communications identifiers, and communications identifiers.

184. The system of claim 181 wherein said computer systems exchange status and recipient response information regarding the delivery of announcements.

185. The system of claim 3 wherein said telecommunication interface comprises a host controlled telephone switch coupled to said host computer.

186. The system of claim 24 wherein said telecommunication interface comprises a host controlled telephone switch coupled to said host computer.

187. The system of claim 45 wherein said telecommunication interface comprises a host controlled telephone switch coupled to said host computer.

188. The system of claim 1 wherein said communications identifiers are telephone numbers, and said association is an association of one or more of an area code or exchange of said telephone numbers with geographic locations.

189. The system of claim 1 wherein said computer system is responsive to status information on previously executed commands in determining a manner of responding to a command.

36

190. The system of claim 189 wherein said computer system is responsive to a command and status information on previously executed commands to discontinue issuance of warnings based on previously executed commands.

191. The system of claim 189 wherein said computer system is responsive to a command and status information on previously executed commands to identify communications identifiers of persons and/or locations that have not already received a warning based on previously executed commands.

192. The system of claim 22 wherein said computer system is responsive to status information on previously executed commands in determining a manner of responding to a command.

193. The system of claim 192 wherein said computer system is responsive to a command and status information on previously executed commands to discontinue issuance of announcements based on previously executed commands.

194. The system of claim 192 wherein said computer system is responsive to a command and status information on previously executed commands to identify communications identifiers of persons and/or locations that have not already received an announcement based on previously executed commands.

195. The system of claim 55 wherein said event identification system is responsive to status information on previously executed commands in determining a manner of responding to said command.

196. The system of claim 195 wherein said computer system is responsive to a command and status information on previously executed commands to discontinue issuance of announcements based on previously executed commands.

197. The system of claim 195 wherein said computer system is responsive to a command and status information on previously executed commands to identify communications identifiers of persons and/or locations that have not already received an announcement based on previously executed commands.

198. The system of claim 15 wherein said communications connection is an Internet connection.

199. The system of claim 15 wherein said communications connection is a radio connection.

200. The system of claim 15 wherein said communications connection is a satellite connection.

201. The system of claim 36 wherein said communications connection is an Internet connection.

202. The system of claim 36 wherein said communications connection is a radio connection.

203. The system of claim 36 wherein said communications connection is a satellite connection.

204. The system of claim 57 wherein said communications connection is an Internet connection.

205. The system of claim 57 wherein said communications connection is a radio connection.

206. The system of claim 57 wherein said communications connection is a satellite connection.

207. A method for warning a plurality of persons and/or locations on a geographic basis, comprising:

storing simultaneously at tandem locations a plurality of communications identifiers, and storing an association of each said identifier with a geographic location thereof,

responding at one or both of said tandem locations to a command identifying a geographic area and a warning to be provided to said geographic area, by comparing geographic locations of communications identifiers with said geographic area, retrieving individual match-

37

ing communications identifiers and establishing a communications connection in response to the command using each retrieved communications identifier and delivering said warning via said communications connection,

communicating and sharing information between the tandem locations regarding warnings to be provided by either of them,

wherein said comparing and retrieving steps are performed after receipt of said command.

208. The method of claim 207 performed using a host computer and a telecommunication interface for receiving telephone numbers and audio messages from said host computer for delivery to said telephone numbers.

209. The method of claim 207 further comprising identifying threats by receiving threat information, evaluating said threat information to identify a geographic area subject to a threat and in response generating said command identifying said geographic area and a warning related to the identified threat.

210. The method of claim 207 further comprising establishing a prioritization of communications identifiers using data, wherein said communications connections are established in a prioritized order.

211. The method of claim 207 further comprising identifying a location of a mobile device addressed by a communications identifier, and storing an association of said communications identifier with said location.

212. The method of claim 211 wherein a communications connection is established and a warning is delivered to a mobile device which has been identified in tracking information to be at a location which matches a geographic area identified in a command that identifies said warning.

213. A method for providing an atmospheric condition announcement to a plurality of persons and/or locations, comprising:

storing simultaneously at tandem locations a plurality of communications identifiers for persons and/or locations in need of atmospheric condition information, and storing an association of each said identifier with identifications of atmospheric condition information to be provided to those persons and/or locations,

responding at one or both of said tandem locations to a command identifying an atmospheric condition to be announced to said persons and/or locations, by analyzing stored identifications of atmospheric conditions to identify target persons and/or locations to be notified of said atmospheric condition, retrieving from said database, individual matching communications identifiers associated with said target persons and/or locations, and establishing a communications connection using each retrieved communications identifier and delivering an announcement of said atmospheric condition via said communications connection,

communicating and sharing information between the tandem locations regarding announcements to be provided by either of them,

wherein said analyzing and retrieving steps are performed after receipt of said command.

214. The method of claim 213 performed using a host computer and a telecommunication interface for receiving telephone numbers and audio messages from said host computer for delivery to said persons and/or locations.

215. The method of claim 213 further comprising identifying atmospheric events by receiving atmospheric event information, evaluating said atmospheric event information

38

to identify persons and/or locations interested in an atmospheric event, and in response generating said command identifying said announcement related to the identified event.

216. The method of claim 213 further comprising establishing a prioritization of communications identifiers using stored data, wherein said communications connections are established in a prioritized order.

217. The method of claim 213 further comprising identifying a location of a mobile device addressed by a communications identifier, and storing an association of said communications identifier with said location.

218. The method of claim 217 wherein a communications connection is established and an announcement is delivered to a mobile device which has been identified in tracking information to be at a location which matches a geographic area identified in a command that identifies said announcement.

219. A method for providing time-sensitive announcements to a plurality of persons and/or locations, comprising:

storing simultaneously at tandem locations a plurality of communications identifiers, and storing an association of each communications identifier with data useful for determining whether particular time-sensitive information is to be communicated to said communications identifier,

responding at one or both of said tandem locations to a command identifying an announcement to be announced to interested persons and/or locations, by comparing said command to said data useful for determining whether particular time-sensitive information is to be communicated to said persons and/or locations, retrieving individual matching communications identifiers associated with persons and/or locations to whom said time-sensitive announcement is to be communicated in response to the command, and establishing a communications connection using each retrieved communications identifier and delivering said time-sensitive announcement via said communications connection,

communicating and sharing information between the tandem locations regarding announcements to be provided by either of them,

wherein said comparing and retrieving steps are performed after receipt of said command.

220. The method of claim 219 performed utilizing a host computer and a telecommunication interface for receiving telephone numbers and audio messages from said host computer for delivery to said telephone numbers.

221. The method of claim 219 further comprising identifying event by receiving event information, evaluating said event information to identify communications identifiers for persons and/or locations interested in an event and in response generating said command identifying said announcement related to the identified event.

222. The method of claim 219 further comprising establishing a prioritization of communications identifiers using stored data, wherein said communications connections are established in a prioritized order.

223. The method of claim 219 further comprising identifying a location of a mobile device addressed by a communications identifier, and storing an association of said communications identifier with said location.

224. The method of claim 223 communications connection is established and an announcement is delivered to a mobile device which has been identified in tracking information

39

mation to be at a location which matches a geographic area identified in a command that identifies said announcement.

225. The method of claim 207 further comprising responding to status information on previously executed commands in determining a manner of responding to a 5 command.

226. The method of claim 213 further comprising responding to status information on previously executed

40

commands in determining a manner of responding to a command.

227. The method of claim 219 further comprising responding to status information on previously executed commands in determining a manner of responding to a command.

* * * * *

UNITED STATES PATENT AND TRADEMARK OFFICE
CERTIFICATE OF CORRECTION

PATENT NO. : 6,816,878 B1
APPLICATION NO. : 09/503141
DATED : November 9, 2004
INVENTOR(S) : Zimmers et al.

Page 1 of 3

It is certified that error appears in the above-identified patent and that said Letters Patent is hereby corrected as shown below:

Column 1, line 37, delete "lead-time lead times detection", insert --lead-time detection--.

Column 2, line 68, delete "do not-receive", insert --do not receive--.

Column 6, line 54, delete "via anyone of", insert --via any one of--.

Column 8, line 37, delete "the EMWN data", insert --the EMWIN data--.

Column 9, line 6, delete "computer-generate voice", insert -
-computer-generated voice--.

Column 11

Line 3, delete "LVI", insert --UVI--.

Line 10, delete "the EMWFN system", insert --the EMWIN system--.

Line 29, delete "Table I", insert --Table I--.

Column 13

Line 25, delete "discussing generally", insert --discussed generally--.

Line 27, delete "parsing EMWFN", insert --parsing EMWIN--.

Line 44, delete "Table 2", insert --Table II--.

Column 14

Line 56, delete "the subscribers=s location", insert --the subscriber's location--.

Line 58, delete "provides an", insert --provide an--.

Column 15

Line 20, delete "the 1 sub-", insert --the sub--.

Line 58, delete "the subscribers location", insert --the subscriber's location--.

Column 16

Line 1, delete "field 260 the", insert --field 260 in the--.

Line 19, delete "annually Discounts", insert --annually. Discounts--.

UNITED STATES PATENT AND TRADEMARK OFFICE
CERTIFICATE OF CORRECTION

PATENT NO. : 6,816,878 B1
APPLICATION NO. : 09/503141
DATED : November 9, 2004
INVENTOR(S) : Zimmers et al.

Page 2 of 3

It is certified that error appears in the above-identified patent and that said Letters Patent is hereby corrected as shown below:

Column 17

Line 22, delete "may contacted", insert --may be contacted--.
Line 38, delete "field is", insert --field 226 is--.
Line 39, delete "communications addresses", insert --communications address--.

Column 19

Line 13, delete "Table 1", insert --Table I--.
Line 25, delete "protocol (1P) address", insert --protocol (IP) address--.
Line 60, delete "the users", insert --the user's--.

Column 20, line 30, delete "6B. It the", insert --6B. If the--.

Column 21

Line 2, delete "receives a data", insert --receives data--.
Line 23, delete "includes a Internet", insert --includes an Internet--.
Line 35, delete "in, response", insert --in response--.
Line 36, delete "system. 112", insert --system 112--.

Column 22

Line 12, delete "even a zip codes", insert --even a zip code--.
Line 20, delete "locations are", insert --locations is--.

Column 23

Line 11, delete "further prioritizes", insert --further prioritized--.
Line 20, delete "are prioritize", insert --are prioritized--.
Line 49, delete "and step", insert --and in step--.
Line 53, delete "point the", insert --point, the--.
Line 57, delete "value one", insert --value of one--.

Column 24

Line 1, delete "release, are", insert --release are--.
Line 38, delete "notifications, are", insert --notifications are--.

Column 29

Claim 85, line 51, delete "claim al", insert --claim 81--.

UNITED STATES PATENT AND TRADEMARK OFFICE
CERTIFICATE OF CORRECTION

PATENT NO. : 6,816,878 B1
APPLICATION NO. : 09/503141
DATED : November 9, 2004
INVENTOR(S) : Zimmers et al.

Page 3 of 3

It is certified that error appears in the above-identified patent and that said Letters Patent is hereby corrected as shown below:

Column 32

Claim 123, lines 7-8, delete "to annoy-ances an", insert --to announce an--.

Claim 132, line 51, delete "claim so", insert --claim 80--.

Column 35, claim 177, line 26, delete "database is", insert --database are--.

Column 36, claim 195, line 27, delete "determining-a", insert --determining a--.

Column 38

Claim 219, line 32, delete "be-communicated", insert --be communicated--.

Claim 224, line 64, delete "223 communications", insert --223 wherein a communications--.

Claim 224, line 66, delete "tracking infor", insert --tracking infor- --.

Signed and Sealed this

First Day of April, 2008

A handwritten signature in black ink, appearing to read "Jon W. Dudas". The signature is stylized with a large, looping initial "J" and a distinct "D".

JON W. DUDAS

Director of the United States Patent and Trademark Office