

ninth edition

# TEXTBOOK of **MEDICAL PHYSIOLOGY**

ARTHUR C. GUYTON, M.D.

Professor Emeritus  
Department of Physiology and Biophysics  
University of Mississippi Medical Center  
Jackson, Mississippi

JOHN E. HALL, Ph.D.

Professor and Chairman  
Department of Physiology and Biophysics  
University of Mississippi Medical Center  
Jackson, Mississippi

W.B. SAUNDERS COMPANY

*ninth edition*

# TEXTBOOK of MEDICAL PHYSIOLOGY

ARTHUR C. GUYTON, M.D.

Professor Emeritus  
Department of Physiology and Biophysics  
University of Mississippi Medical Center  
Jackson, Mississippi

JOHN E. HALL, Ph.D.

Professor and Chairman  
Department of Physiology and Biophysics  
University of Mississippi Medical Center  
Jackson, Mississippi

---

W.B. SAUNDERS COMPANY

*A Division of Harcourt Brace & Company*

The Curtis Center  
Independence Square West  
Philadelphia, Pennsylvania 19106

QP34  
.5 G9  
1996  
copy 2



Library of Congress Cataloging-in-Publication Data

Guyton, Arthur C.  
Textbook of medical physiology / Arthur C. Guyton, John E. Hall.—9th ed.

p. cm.

Includes bibliographical references and index.

ISBN 0-7216-5944-6

1. Human physiology. 2. Physiology, Pathological. I. Hall, John E. (John Edward). II. Title.

[DNLM: 1. Physiology. QT 104 G992t 1996]

QP34.5G9 1996  
612—dc20

DNLM/DLC

94-40510

Cover illustration is *OPUS 1972*, enamel on steel, by Virgil Cantini, with permission of the artist and Mansfield State College, Mansfield, Pennsylvania.

ISBN 0-7216-5944-6

TEXTBOOK OF MEDICAL PHYSIOLOGY

International Edition 0-7216-6773-2

Copyright © 1996, 1991, 1986, 1981, 1976, 1971, 1966, 1961, 1956 by W.B. Saunders Company.

Copyright renewed 1994, 1984 by Arthur C. Guyton.

All rights reserved. No part of this publication may be reproduced or transmitted in any form or by any means, electronic or mechanical, including photocopy, recording, or any information storage and retrieval system, without permission in writing from the publisher.

Printed in the United States of America.

Last digit is the print number: 9 8 7 6 5 4 3 2 1



# Heart Muscle; The Heart as a Pump

## CHAPTER 9

With this chapter we begin discussion of the heart and circulatory system. The heart, shown in Figure 9-1, is actually two separate pumps: a *right heart* that pumps the blood through the lungs and a *left heart* that pumps the blood through the peripheral organs. In turn, each of these hearts is a pulsatile two-chamber pump composed of an *atrium* and a *ventricle*. The atrium functions principally as a weak primer pump for the ventricle, helping to move the blood into the ventricle. The ventricle in turn supplies the main force that propels the blood through either the pulmonary or the peripheral circulation.

Special mechanisms in the heart provide cardiac rhythmicity and transmit action potentials throughout the heart muscle to cause the heart's rhythmical beat. This rhythmical control system is explained in Chapter 10. In this chapter, we explain how the heart operates as a pump, beginning with the special features of heart muscle itself.

### PHYSIOLOGY OF CARDIAC MUSCLE

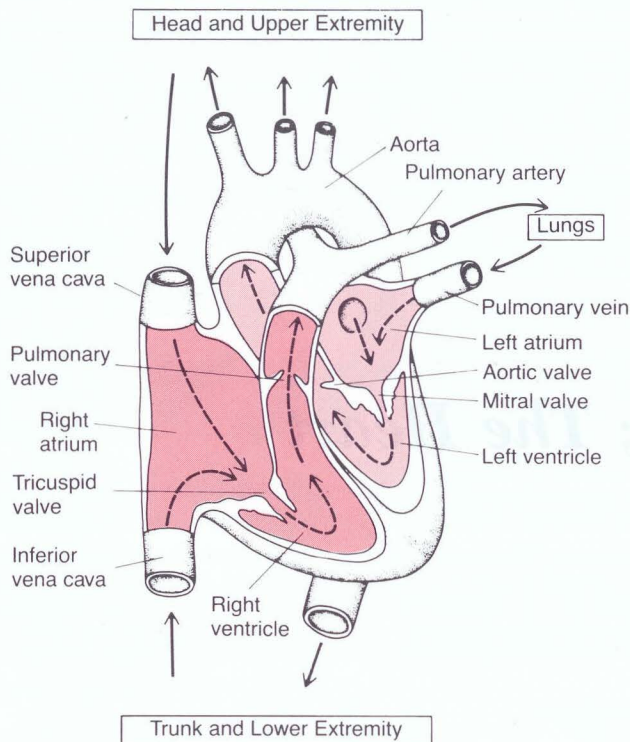
The heart is composed of three major types of cardiac muscle: atrial muscle, ventricular muscle, and specialized excitatory and conductive muscle fibers. The atrial and ventricular types of muscle contract in much the same way as skeletal muscle except that the duration of contraction is much longer. On the other hand, the specialized excitatory and conductive fibers contract only feebly because they contain few contractile fibrils; instead, they exhibit rhythmicity and varying rates of conduction, providing an excitatory system for the heart.

### Physiologic Anatomy of Cardiac Muscle

Figure 9-2 shows a typical histological picture of cardiac muscle, demonstrating the cardiac muscle fibers arranged in a latticework, the fibers dividing, then recombining, and then spreading again. One notes immediately from this figure that cardiac muscle is *striated* in the same manner as typical skeletal muscle. Furthermore, cardiac muscle has typical myofibrils that contain *actin* and *myosin filaments* almost identical to those found in skeletal muscle, and these filaments interdigitate and slide along one another during contraction in the same manner as occurs in skeletal muscle. (See Chapter 6.) In other ways, cardiac muscle is quite different from skeletal muscle, as we shall see.

**CARDIAC MUSCLE AS A SYNCYTIIUM.** The dark areas crossing the cardiac muscle fibers in Figure 9-2 are called *intercalated discs*; they are actually cell membranes that separate individual cardiac muscle cells from one another. That is, cardiac muscle fibers are made up of many individual cells connected in series with one another. Yet electrical resistance through the intercalated disc is only  $\frac{1}{400}$  the resistance through the outside membrane of the cardiac muscle fiber because the cell membranes fuse with one another in such a way that they form permeable "communicating" junctions (gap junctions) that allow relatively free diffusion of ions. Therefore, from a functional point of view, ions move with ease along the longitudinal axes of the cardiac muscle fibers, so that action potentials travel from one cardiac muscle cell to another, past the intercalated discs, with only slight hindrance. Thus, cardiac muscle is a *syncytium* of many heart muscle cells, in which the cardiac cells are so interconnected that

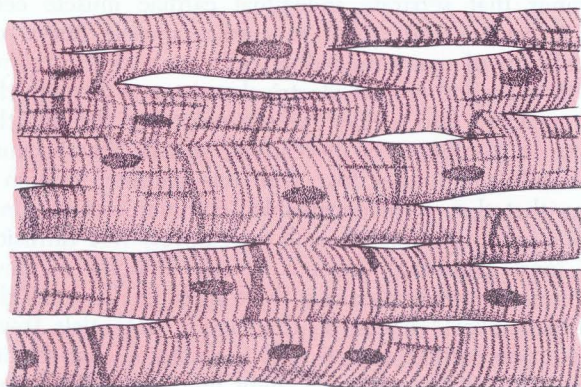




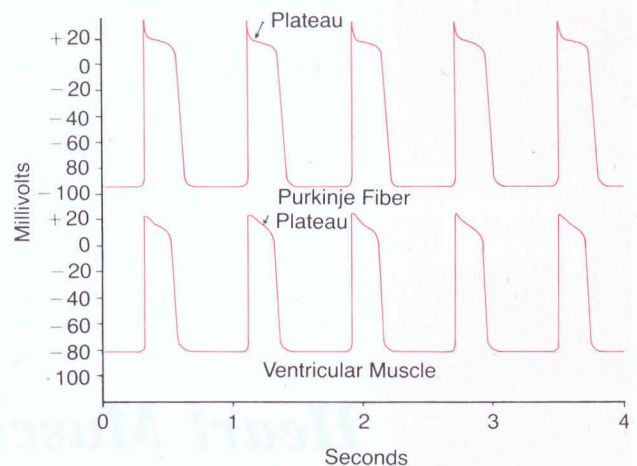
**Figure 9-1.** Structure of the heart and course of blood flow through the heart chambers.

when one of these cells becomes excited, the action potential spreads to all of them, spreading from cell to cell as well as throughout the latticework interconnections.

The heart is actually composed of two syncytiums: the *atrial syncytium* that constitutes the walls of the two atria and the *ventricular syncytium* that constitutes the walls of the two ventricles. The atria are separated from the ventricles by fibrous tissue that surrounds the valvular openings between the atria and ventricles. Normally, action potentials can be conducted from the atrial syncytium into the ventricular syncytium only by way of a specialized conductive sys-



**Figure 9-2.** "Syncytial," interconnecting nature of cardiac muscle.



**Figure 9-3.** Rhythmic action potentials from a Purkinje fiber and from a ventricular muscle fiber recorded by means of microelectrodes.

tem, the *atrioventricular (A-V) bundle*, a bundle of conductive fibers several millimeters in diameter that is discussed in detail in Chapter 10. This division of the muscle mass of the heart into two functional syncytiums allows the atria to contract a short time ahead of ventricular contraction, which is important for the effectiveness of heart pumping.

### Action Potentials in Cardiac Muscle

The *resting membrane potential* of normal cardiac muscle is about  $-85$  to  $-95$  millivolts and about  $-90$  to  $-100$  millivolts in the specialized conductive fibers, the Purkinje fibers, which are discussed in Chapter 10.

The *action potential* recorded in ventricular muscle, shown by the bottom record of Figure 9-3, is 105 millivolts, which means that the membrane potential rises from its normally very negative value to a slightly positive value of about  $+20$  millivolts. The positive portion is called the *overshoot potential*. After the initial *spike*, the membrane remains depolarized for about 0.2 second in atrial muscle and about 0.3 second in ventricular muscle, exhibiting a *plateau* as shown in Figure 9-3, followed at the end of the plateau by abrupt repolarization. The presence of this plateau in the action potential causes muscle contraction to last 3 to 15 times as long in cardiac muscle as in skeletal muscle.

**WHY THE LONG ACTION POTENTIAL AND THE PLATEAU?** At this point, we must ask the question: Why is the action potential of cardiac muscle so long, and why does it have a plateau, whereas that of skeletal muscle does not? The basic biophysical answers to these questions are presented in Chapter 5, but they merit summarizing again.

At least two major differences between the membrane properties of cardiac and skeletal muscle account for the prolonged action potential and the plateau in cardiac muscle.

First, the action potential of skeletal muscle is



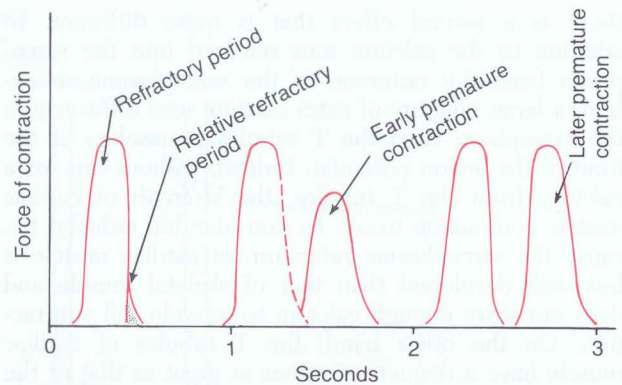
caused almost entirely by sudden opening of large numbers of so-called *fast sodium channels* that allow tremendous numbers of sodium ions to enter the skeletal muscle fiber. These channels are called “fast” channels because they remain open for only a few 10,000ths of a second and then abruptly close. At the end of this closure, repolarization occurs, and the action potential is over within another 10,000th of a second or so. In cardiac muscle, on the other hand, the action potential is caused by the opening of two types of channels: (1) the same *fast sodium channels* as those in skeletal muscle and (2) another entire population of so-called *slow calcium channels*, also called *calcium-sodium channels*. This second population of channels differs from the fast sodium channels in being slower to open; but more important, they remain open for several tenths of a second. During this time, a large quantity of both calcium and sodium ions flows through these channels to the interior of the cardiac muscle fiber, and this maintains a prolonged period of depolarization, causing the plateau in the action potential. Furthermore, the calcium ions that enter the muscle during this action potential play an important role in helping excite the muscle contractile process, which is another difference between cardiac muscle and skeletal muscle, as we discuss later in this chapter.

The second major functional difference between cardiac muscle and skeletal muscle that helps account for both the prolonged action potential and its plateau is this: Immediately after the onset of the action potential, the permeability of the cardiac muscle membrane for potassium *decreases* about fivefold, an effect that does not occur in skeletal muscle. This decreased potassium permeability may be caused by the excess calcium influx through the calcium channels just noted. Regardless of the cause, the decreased potassium permeability greatly decreases the outflux of potassium ions during the action potential plateau and thereby prevents early return of the potential to its resting level. When the slow calcium-sodium channels do close at the end of 0.2 to 0.3 second and the influx of calcium and sodium ions ceases, the membrane permeability for potassium increases rapidly; this rapid loss of potassium from the fiber returns the membrane potential to its resting level, thus ending the action potential.

#### VELOCITY OF CONDUCTION IN CARDIAC MUSCLE.

The velocity of conduction of the action potential in both atrial and ventricular muscle fibers is about 0.3 to 0.5 m/sec, or about  $\frac{1}{250}$  the velocity in very large nerve fibers and about  $\frac{1}{10}$  the velocity in skeletal muscle fibers. The velocity of conduction in the specialized conductive system—the Purkinje fibers—varies from 0.02 to 4 m/sec in different parts of the system, which allows rapid conduction of the excitatory signal in the heart, as explained in Chapter 10.

**REFRACTORY PERIOD OF CARDIAC MUSCLE.** Cardiac muscle, like all excitable tissue, is refractory to restimulation during the action potential. Therefore, the refractory period of the heart is the interval of time, as shown to the left in Figure 9–4, during which a nor-



**Figure 9–4.** Contraction of the heart showing the durations of the refractory period and the relative refractory period, the effect of an early premature contraction, and the effect of a later premature contraction. Note that the premature contractions do not cause wave summation, as occurs in skeletal muscle.

mal cardiac impulse cannot re-excite an already excited area of cardiac muscle. The normal refractory period of the ventricle is 0.25 to 0.3 second, which is about the duration of the action potential. There is an additional *relative refractory period* of about 0.05 second during which the muscle is more difficult than normal to excite but nevertheless can be excited, as demonstrated by the early premature contraction in the second example of Figure 9–4.

The refractory period of atrial muscle is much shorter than that for the ventricles (about 0.15 second), and the relative refractory period is another 0.03 second. Therefore, the rhythmical rate of contraction of the atria can be faster than that of the ventricles.

#### Excitation-Contraction Coupling—Function of Calcium Ions and the Transverse Tubules

The term “excitation-contraction coupling” means the mechanism by which the action potential causes the myofibrils of muscle to contract. This is discussed for skeletal muscle in Chapter 7. Once again, there are differences in this mechanism in cardiac muscle that have important effects on the characteristics of cardiac muscle contraction.

As is true for skeletal muscle, when an action potential passes over the cardiac muscle membrane, the action potential also spreads to the interior of the cardiac muscle fiber along the membranes of the transverse (T) tubules. The T tubule action potentials in turn act on the membranes of the longitudinal sarcoplasmic tubules to cause instantaneous release of calcium ions into the muscle sarcoplasm from the sarcoplasmic reticulum. In another few thousandths of a second, these calcium ions diffuse into the myofibrils and catalyze the chemical reactions that promote sliding of the actin and myosin filaments along one another; this in turn produces the muscle contraction.

Thus far, this mechanism of excitation-contraction coupling is the same as that for skeletal muscle, but



there is a second effect that is quite different. In addition to the calcium ions released into the sarcoplasm from the cisternae of the sarcoplasmic reticulum, a large quantity of extra calcium ions diffuses into the sarcoplasm from the T tubules themselves at the time of the action potential. Indeed, without this extra calcium from the T tubules, the strength of cardiac muscle contraction would be considerably reduced because the sarcoplasmic reticulum of cardiac muscle is less well developed than that of skeletal muscle and does not store enough calcium to provide full contraction. On the other hand, the T tubules of cardiac muscle have a diameter 5 times as great as that of the skeletal muscle tubules, which means a volume 25 times as great. Also, inside the T tubules is a large quantity of mucopolysaccharides that are electronegatively charged and bind an abundant store of even more calcium ions, keeping them always available for diffusion to the interior of the cardiac muscle fiber when the T tubule action potential occurs.

The strength of contraction of cardiac muscle depends to a great extent on the concentration of calcium ions in the extracellular fluids. The reason for this is that the ends of the T tubules open directly to the outside of the cardiac muscle fibers, allowing the same extracellular fluid that is in the cardiac muscle interstitium to percolate through the T tubules as well. Consequently, the quantity of calcium ions in the T tubule system—that is, the availability of calcium ions to cause cardiac muscle contraction—depends to a great extent on the extracellular fluid calcium ion concentration.

By way of contrast, the strength of skeletal muscle contraction is hardly affected by the extracellular fluid calcium concentration because its contraction is caused almost entirely by calcium ions released from the sarcoplasmic reticulum inside the skeletal muscle fiber itself.

At the end of the plateau of the cardiac action potential, the influx of calcium ions to the interior of the muscle fiber is suddenly cut off, and the calcium ions in the sarcoplasm are rapidly pumped back into both the sarcoplasmic reticulum and the T tubules. As a result, the contraction ceases until a new action potential occurs.

**DURATION OF CONTRACTION.** Cardiac muscle begins to contract a few milliseconds after the action potential begins and continues to contract until a few milliseconds after the action potential ends. Therefore, the duration of contraction of cardiac muscle is mainly a function of the duration of the action potential—about 0.2 second in atrial muscle and 0.3 second in ventricular muscle.

**Effect of Heart Rate on Duration of Contraction.** When the heart rate increases, the duration of each total cycle of the heart, including both the contraction phase and the relaxation phase, decreases. The duration of the action potential and the period of contraction (systole) also decrease but not by as great a percentage as does the relaxation phase (diastole). At a normal heart rate of 72 beats per minute, the period of contraction is about 0.40 of the entire cycle. At three times

normal heart rate, this period is about 0.65 of the entire cycle, which means that the heart beating at a very fast rate sometimes does not remain relaxed long enough to allow complete filling of the cardiac chambers before the next contraction.

## THE CARDIAC CYCLE

The cardiac events that occur from the beginning of one heartbeat to the beginning of the next are called the *cardiac cycle*. Each cycle is initiated by spontaneous generation of an action potential in the sinus node, as explained in Chapter 10. This node is located in the superior lateral wall of the right atrium near the opening of the superior vena cava, and the action potential travels rapidly through both atria and thence through the A-V bundle into the ventricles. Because of a special arrangement of the conducting system from the atria into the ventricles, there is a delay of more than  $\frac{1}{10}$  second between passage of the cardiac impulse from the atria into the ventricles. This allows the atria to contract ahead of the ventricles, thereby pumping blood into the ventricles before the strong ventricular contraction. Thus, the atria act as *primer pumps* for the ventricles, and the ventricles then provide the major source of power for moving blood through the vascular system.

### Systole and Diastole

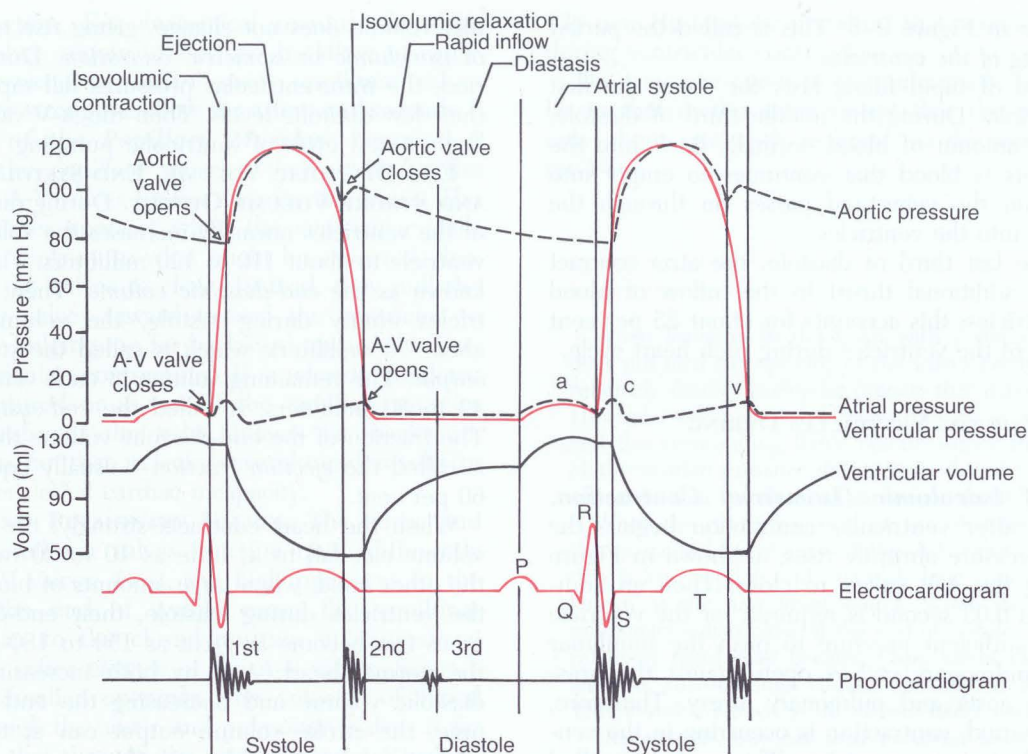
The cardiac cycle consists of a period of relaxation called *diastole*, during which the heart fills with blood, followed by a period of contraction called *systole*.

Figure 9–5 shows the different events during the cardiac cycle. The top three curves show the pressure changes in the aorta, left ventricle, and left atrium, respectively. The fourth curve depicts the changes in ventricular volume, the fifth the electrocardiogram, and the sixth a phonocardiogram, which is a recording of the sounds produced by the heart—mainly by the heart valves—as it pumps. It is especially important that the reader study in detail the diagram of this figure and understand the causes of all the events shown.

### Relationship of the Electrocardiogram to the Cardiac Cycle

The electrocardiogram in Figure 9–5 shows the *P*, *Q*, *R*, *S*, and *T waves*, which are discussed in Chapters 11, 12, and 13. They are electrical voltages generated by the heart and recorded by the electrocardiograph from the surface of the body. The *P wave* is caused by the *spread of depolarization* through the atria, and this is followed by atrial contraction, which causes a slight rise in the atrial pressure curve immediately after the *P wave*. About 0.16 second after the onset of the *P wave*, the *QRS waves* appear as a result of depolarization of the ventricles, which initiates contraction of the ventricles and causes the ventricular pressure to begin





**Figure 9-5.** Events of the cardiac cycle for left ventricular function showing changes in left atrial pressure, left ventricular pressure, aortic pressure, ventricular volume, the electrocardiogram, and the phonocardiogram.

rising, as also shown in the figure. Therefore, the QRS complex begins slightly before the onset of ventricular systole.

Finally, one observes the *ventricular T wave* in the electrocardiogram. This represents the stage of repolarization of the ventricles at which time the ventricular muscle fibers begin to relax. Therefore, the T wave occurs slightly before the end of ventricular contraction.

### Function of the Atria as Primer Pumps

Blood normally flows continually from the great veins into the atria; about 75 per cent of the blood flows directly through the atria into the ventricles even before the atria contract. Then, atrial contraction usually causes an additional 25 per cent filling of the ventricles. Therefore, the atria simply function as primer pumps that increase the ventricular pumping effectiveness as much as 25 per cent. Yet the heart can continue to operate satisfactorily under most conditions even without this extra 25 per cent effectiveness because it normally has the capability of pumping 300 to 400 per cent more blood than is required by the body. Therefore, when the atria fail to function, the difference is unlikely to be noticed unless a person exercises; then acute signs of heart failure occasionally develop, especially shortness of breath.

**PRESSURE CHANGES IN THE ATRIA—THE *a*, *c*, AND *v* WAVES.** In the atrial pressure curve of Figure 9-5,

three major pressure elevations, called the *a*, *c*, and *v* atrial pressure waves, can be noted.

The *a wave* is caused by atrial contraction. Ordinarily, the *right* atrial pressure rises 4 to 6 mm Hg during atrial contraction, whereas the *left* atrial pressure rises about 7 to 8 mm Hg.

The *c wave* occurs when the ventricles begin to contract; it is caused partly by slight backflow of blood into the atria at the onset of ventricular contraction but probably mainly by bulging of the A-V valves backward toward the atria because of increasing pressure in the ventricles.

The *v wave* occurs toward the end of ventricular contraction; it results from slow flow of blood into the atria from the veins while the A-V valves are closed during ventricular contraction. Then, when ventricular contraction is over, the A-V valves open, allowing this blood to flow rapidly into the ventricles and causing the *v wave* to disappear.

### Function of the Ventricles as Pumps

**FILLING OF THE VENTRICLES.** During ventricular systole, large amounts of blood accumulate in the atria because of the closed A-V valves. Therefore, just as soon as systole is over and the ventricular pressures fall again to their low diastolic values, the moderately increased pressures in the atria immediately push the A-V valves open and allow blood to flow rapidly into the ventricles, as shown by the rise of the *ventricular*



volume curve in Figure 9–5. This is called the *period of rapid filling of the ventricles*.

The period of rapid filling lasts for about the first third of diastole. During the middle third of diastole, only a small amount of blood normally flows into the ventricles; this is blood that continues to empty into the atria from the veins and passes on through the atria directly into the ventricles.

During the last third of diastole, the atria contract and give an additional thrust to the inflow of blood into the ventricles; this accounts for about 25 per cent of the filling of the ventricles during each heart cycle.

### EMPTYING OF THE VENTRICLES DURING SYSTOLE

#### *Period of Isovolumic (Isometric) Contraction.*

Immediately after ventricular contraction begins, the ventricular pressure abruptly rises, as shown in Figure 9–5, causing the A-V valves to close. Then an additional 0.02 to 0.03 second is required for the ventricle to build up sufficient pressure to push the semilunar (aortic and pulmonary) valves open against the pressures in the aorta and pulmonary artery. Therefore, during this period, contraction is occurring in the ventricles, but there is no emptying. This period is called the period of *isovolumic* or *isometric contraction*, meaning by these terms that tension is increasing in the muscle but no shortening of the muscle fibers is occurring. (This is not strictly true because there is apex-to-base shortening and circumferential elongation.)

**Period of Ejection.** When the left ventricular pressure rises slightly above 80 mm Hg (and the right ventricular pressure slightly above 8 mm Hg), the ventricular pressures now push the semilunar valves open. Immediately, blood begins to pour out of the ventricles, with about 70 per cent of the emptying occurring during the first third of the period of ejection and the remaining 30 per cent during the next two thirds. Therefore, the first third is called the *period of rapid ejection* and the last two thirds, the *period of slow ejection*.

For a peculiar reason, the ventricular pressure falls to a value slightly *below* that in the aorta during the period of slow ejection, despite the fact that some blood is still leaving the left ventricle. The reason is that the blood flowing out of the ventricle has built up momentum. As this momentum decreases during the latter part of systole, the kinetic energy of the momentum is converted into pressure in the aorta, which makes the arterial pressure slightly greater than the pressure inside the ventricle.

#### **PERIOD OF ISOVOLUMIC (ISOMETRIC) RELAXATION.**

At the end of systole, ventricular relaxation begins suddenly, allowing the intraventricular pressures to fall rapidly. The elevated pressures in the distended large arteries immediately push blood back toward the ventricles, which snaps the aortic and pulmonary valves closed. For another 0.03 to 0.06 second, the ventricular muscle continues to relax, even though the ventricu-

lar volume does not change, giving rise to the period of *isovolumic* or *isometric relaxation*. During this period, the intraventricular pressures fall rapidly back to their low diastolic levels. Then the A-V valves open to begin a new cycle of ventricular pumping.

**END-DIASTOLIC VOLUME, END-SYSTOLIC VOLUME, AND STROKE VOLUME OUTPUT.** During diastole, filling of the ventricles normally increases the volume of each ventricle to about 110 to 120 milliliters. This volume is known as the *end-diastolic volume*. Then, as the ventricles empty during systole, the volume decreases about 70 milliliters, which is called the *stroke volume output*. The remaining volume in each ventricle, about 40 to 50 milliliters, is called the *end-systolic volume*. The fraction of the end-diastolic volume that is ejected is called the *ejection fraction*—usually equal to about 60 per cent.

When the heart contracts strongly, the end-systolic volume can fall to as little as 10 to 20 milliliters. On the other hand, when large amounts of blood flow into the ventricles during diastole, their end-diastolic volumes can become as great as 150 to 180 milliliters in the normal heart. And by both increasing the end-diastolic volume and decreasing the end-systolic volume, the stroke volume output can at times be increased to about double normal.

### Function of the Valves

**ATRIOVENTRICULAR VALVES.** The A-V valves (the *tricuspid* and the *mitral* valves) prevent backflow of blood from the ventricles to the atria during systole, and the *semilunar valves* (the *aortic* and *pulmonary* valves) prevent backflow from the aorta and pulmonary arteries into the ventricles during diastole. All these valves, which are shown in Figure 9–6, close and open *passively*. That is, they close when a backward pressure gradient pushes blood backward, and they open when a forward pressure gradient forces blood in the

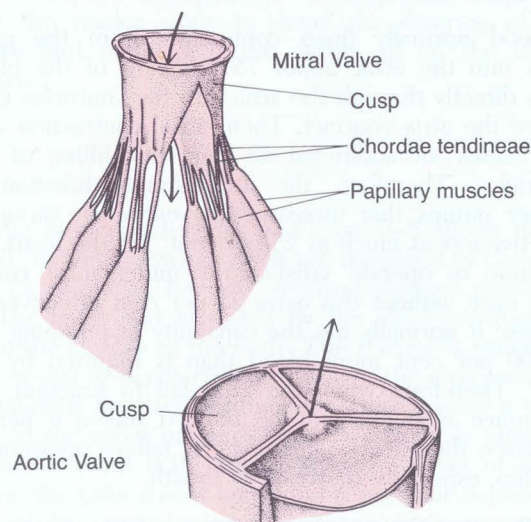


Figure 9–6. Mitral and aortic valves.



forward direction. For anatomical reasons, the thin, filmy A-V valves require almost no backflow to cause closure, whereas the much heavier semilunar valves require rather strong backflow for a few milliseconds.

**Function of the Papillary Muscles.** Figure 9–6 also shows the papillary muscles that attach to the vanes of the A-V valves by the *chordae tendineae*. The papillary muscles contract when the ventricular walls contract, but contrary to what might be expected, they *do not* help the valves to close. Instead, they pull the vanes of the valves inward toward the ventricles to prevent their bulging too far backward toward the atria during ventricular contraction. If a chorda tendinea becomes ruptured or if one of the papillary muscles becomes paralyzed, the valve bulges far backward, sometimes so far that it leaks severely and results in severe or even lethal cardiac incapacity.

**AORTIC AND PULMONARY VALVES.** The aortic and pulmonary semilunar valves function quite differently from the A-V valves. First, the high pressures in the arteries at the end of systole cause the semilunar valves to snap to the closed position in comparison with a much softer closure of the A-V valves. Second, because of smaller openings, the velocity of blood ejection through the aortic and pulmonary valves is far greater than that through the much larger A-V valves. Also, because of the rapid closure and rapid ejection, the edges of the semilunar valves are subjected to much greater mechanical abrasion than are the A-V valves. And, finally, the A-V valves are supported by the chordae tendineae, which is not true for the semilunar valves. It is obvious from the anatomy of the aortic and pulmonary valves, as shown in Figure 9–6, that they are well adapted to withstand the extra physical stresses.

## The Aortic Pressure Curve

When the left ventricle contracts, the ventricular pressure rises rapidly until the aortic valve opens. Then the pressure in the ventricle rises much less thereafter, as shown in Figure 9–5, because blood immediately flows out of the ventricle into the aorta.

The entry of blood into the arteries causes the walls of these arteries to stretch and the pressure to rise. Then, at the end of systole, after the left ventricle stops ejecting blood and the aortic valve closes, the elastic recoil of the arteries maintains a high pressure in the arteries even during diastole.

A so-called *incisura* occurs in the aortic pressure curve when the aortic valve closes. This is caused by a short period of backward flow of blood immediately before closure of the valve, followed then by sudden cessation of the backflow.

After the aortic valve has closed, pressure in the aorta falls slowly throughout diastole because blood stored in the distended elastic arteries flows continually through the peripheral vessels back to the veins. Before the ventricle contracts again, the aortic pressure usually falls to about 80 mm Hg (diastolic pressure), which is two thirds the maximal pressure of

120 mm Hg (systolic pressure) that occurs in the aorta during ventricular contraction.

The pressure curve in the pulmonary artery is similar to that in the aorta except that the pressures are only about one sixth as great, as discussed in Chapter 14.

## Relationship of the Heart Sounds to Heart Pumping

When listening to the heart with a stethoscope, one does not hear the opening of the valves because this is a relatively slowly developing process that makes no noise. However, when the valves close, the vanes of the valves and the surrounding fluids vibrate under the influence of the sudden pressure differentials that develop, giving off sound that travels in all directions through the chest.

When the ventricles contract, one first hears a sound that is caused by closure of the A-V valves. The vibration is low in pitch and relatively long continued and is known as the *first heart sound*. When the aortic and pulmonary valves close at the end of systole, one hears a relatively rapid snap because these valves close rapidly, and the surroundings vibrate for only a short period. This sound is known as the *second heart sound*.

Occasionally, one can hear an *atrial sound* when the atria beat because of vibrations associated with the flow of blood into the ventricles. Also, a *third heart sound* sometimes occurs at about the end of the first third of diastole, believed to be caused by blood flowing with a rumbling motion into the almost-filled ventricles. The precise causes of the heart sounds are discussed more fully in Chapter 23, in relation to auscultation.

## Work Output of the Heart

### STROKE WORK OUTPUT AND MINUTE WORK OUTPUT.

The *stroke work output* of the heart is the amount of energy that the heart converts to work during each heartbeat while pumping blood into the arteries. *Minute work output* is the total amount of energy converted in 1 minute; this is equal to the stroke work output times the heart rate per minute.

Work output of the heart is in two forms. First, by far the major proportion is used to move the blood from the low-pressure veins to the high-pressure arteries. This is called *volume-pressure work* or *external work*. Second, a minor proportion of the energy is used to accelerate the blood to its velocity of ejection through the aortic and pulmonary valves. This is the *kinetic energy of blood flow* component of the work output.

**External Work (Volume-Pressure Work).** The work performed by the left ventricle to raise the pressure of the blood during each heartbeat (the left ventricular external work output) is equal to the *stroke volume* times (*left ventricular mean ejection pressure* minus *mean left ventricular input pressure during diastolic filling*). When pressure is expressed in dynes per square centimeter and stroke volume in milliliters, the external work output is in ergs.

Right ventricular external work output is normally about one sixth the work output of the left ventricle because of the difference in systolic pressure against which the two ventricles must pump.



**Kinetic Energy of Blood Flow.** The additional work output of each ventricle required to create kinetic energy of blood flow is proportional to the mass of blood ejected times the square of velocity of ejection. That is,

$$\text{Kinetic energy} = \frac{mv^2}{2}$$

When the mass is expressed in *grams* of blood ejected and the velocity in *centimeters per second*, the work output is in *ergs*.

Ordinarily, the work output of the left ventricle required to create kinetic energy of blood flow is only about 1 per cent of the total work output of the ventricle and therefore is ignored in the calculation of the total stroke work output. In certain abnormal conditions, such as aortic stenosis in which the blood flows with great velocity through the stenosed valve, more than 50 per cent of the total work output may be required to create kinetic energy of blood flow.

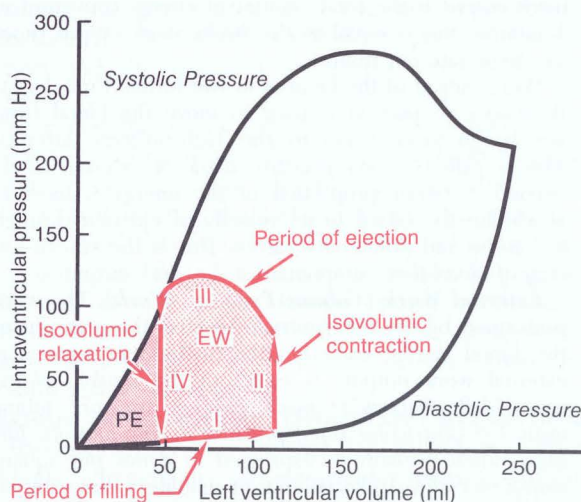
### Graphical Analysis of Ventricular Pumping

Figure 9-7 shows a graphical diagram that is especially useful in explaining the pumping mechanics of the left ventricle. The most important components of the diagram are the two heavy black curves labeled “diastolic pressure” and “systolic pressure.” These curves are volume-pressure curves.

The diastolic pressure curve is determined by filling the heart with progressively greater quantities of blood and then measuring the diastolic pressure immediately before ventricular contraction occurs, which is the *end-diastolic pressure* of the ventricle.

The systolic pressure curve is determined by preventing any outflow of blood from the heart and measuring the maximum systolic pressure that is achieved during ventricular contraction at each volume of filling.

Until the volume of the ventricle rises above about



**Figure 9-7.** Relationship between left ventricular volume and intraventricular pressure during diastole and systole. Also shown by the heavy red lines is the “volume-pressure diagram” that demonstrates the changes in intraventricular volume and pressure during the cardiac cycle.

150 milliliters, the diastolic pressure does not increase greatly. Therefore, up to this volume, blood can flow easily into the ventricle from the atrium. Above 150 milliliters, the diastolic pressure does increase rapidly, partly because of fibrous tissue in the heart that will stretch no more and partly because the pericardium that surrounds the heart becomes stretched nearly to its limit. During ventricular contraction, the systolic pressure increases rapidly at progressively greater ventricular volumes but reaches a maximum at a ventricular volume of 150 to 170 milliliters. Then, as the volume increases still further, the systolic pressure actually decreases under some conditions, as demonstrated by the falling systolic pressure curve, because at these great volumes, the actin and myosin filaments of the cardiac muscle fibers are pulled apart enough for the strength of cardiac fiber contraction to become less than optimal.

Note especially in the figure that the maximum systolic pressure for the normal unstimulated left ventricle is between 250 and 300 mm Hg, but this varies widely with strength of the heart. For the normal right ventricle, it is between 60 and 80 mm Hg.

**“Volume-Pressure Diagram” During the Cardiac Cycle; Cardiac Work Output.** The red curves in Figure 9-7 form a loop called the *volume-pressure diagram* of the cardiac cycle for the left ventricle. It is divided into four phases.

**Phase I: Period of filling.** This phase in the volume-pressure diagram begins at a ventricular volume of about 45 milliliters and a diastolic pressure near 0 mm Hg. Forty-five milliliters is the amount of blood that remains in the ventricle after the previous heartbeat and is called the *end-systolic volume*. As venous blood flows into the ventricle from the left atrium, the ventricular volume normally increases to about 115 milliliters, called the *end-diastolic volume*, an increase of 70 milliliters. Therefore, the volume-pressure diagram during phase I extends along the line labeled “I,” with the volume increasing to 115 milliliters and the diastolic pressure rising to about 5 mm Hg.

**Phase II: Period of isovolumic contraction.** During isovolumic contraction, the volume of the ventricle does not change because all valves are closed. However, the pressure inside the ventricle rises to equal the pressure in the aorta, a pressure value of about 80 mm Hg, as depicted by the line labeled “II.”

**Phase III: Period of ejection.** During ejection, the systolic pressure rises even higher because of still more contraction of the heart. At the same time, the volume of the ventricle decreases because the aortic valve opens and blood now flows out of the ventricle into the aorta. Therefore, the curve labeled “III” traces the changes in volume and systolic pressure during this period of ejection.

**Phase IV: Period of isovolumic relaxation.** At the end of the period of ejection, the aortic valve closes, and the ventricular pressure falls back to the diastolic pressure level. The line labeled “IV” traces this decrease in intraventricular pressure without any change in volume. Thus, the ventricle returns to its starting point, with about 45 milliliters of blood left in the ventricle and at an atrial pressure usually close to 0 mm Hg.



**WORK OUTPUT CALCULATED FROM THE VOLUME-PRESSURE DIAGRAM.** Readers well trained in the basic principles of physics should recognize that the area subtended by this volume-pressure diagram (the right-hand portion of the shaded area, labeled EW) is representative of the *net external work output* of the ventricle during its contraction cycle. In experimental studies of cardiac contraction, this diagram is used for calculating cardiac work output.

When the heart pumps large quantities of blood, the work diagram becomes much larger. That is, it extends far to the right because the ventricle now fills with more blood during diastole, it rises much higher because the ventricle contracts with greater pressure, and it usually extends further to the left because the ventricle contracts to a smaller volume—especially if the ventricle is stimulated to increased activity by the sympathetic nervous system.

**CONCEPTS OF PRELOAD AND AFTERLOAD.** In assessing the contractile properties of muscle, it is important to specify the degree of tension on the muscle when it begins to contract, which is called the *preload*, and to specify the load against which the muscle exerts its contractile force, which is called the *afterload*.

For cardiac contraction, the preload is usually considered to be the end-diastolic pressure when the ventricle has become filled.

The afterload of the ventricle is the pressure in the artery leading from the ventricle. In Figure 9–7, this corresponds to the systolic pressure described by the Phase III curve of the volume-pressure diagram. (Sometimes the afterload is loosely considered to be the resistance in the circulation rather than the pressure.)

The importance of the concepts of preload and afterload is that in many abnormal functional states of the heart or circulation, the pressure during filling of the ventricle (the preload), the arterial pressure against which the ventricle must contract (the afterload), or both are severely altered from the normal.

### Chemical Energy for Cardiac Contraction: Oxygen Utilization by the Heart

Heart muscle, like skeletal muscle, uses chemical energy to provide the work of contraction. This energy is derived mainly from oxidative metabolism of fatty acids and, to a lesser extent, other nutrients, especially lactate and glucose. Therefore, the rate of oxygen consumption by the heart is an excellent measure of the chemical energy liberated while the heart performs its work. The different chemical reactions that liberate this energy are discussed in Chapters 67 and 68.

Experimental studies on isolated hearts have shown that the oxygen consumption of the heart, and therefore the chemical energy expended during contraction, is directly related to the total shaded area of Figure 9–7. This shaded portion consists of the *external work*, EW, as explained earlier, and an additional portion called the *potential energy*, labeled PE. The potential energy represents additional work output that could be accomplished by contraction of the ventricle if the ventricle should empty completely all the blood in its chamber with each contraction.

It has also been found experimentally that oxygen consumption is nearly proportional to the *tension* that occurs in the heart muscle during contraction *times* the

*duration of time* that the contraction persists, called the *tension-time index*. Because tension is high when the systolic pressure is high, correspondingly more oxygen is used. Also, much more chemical energy is expended even at normal systolic pressures when the ventricle is abnormally dilated because the heart muscle tension during contraction is proportional to pressure *times* the diameter of the ventricle. This is especially important in heart failure because the ventricle is then dilated, and paradoxically, the amount of chemical energy required for a given amount of work output must be greater than ever even though the heart is already failing.

**EFFICIENCY OF CARDIAC CONTRACTION.** During muscle contraction, most of the chemical energy is converted into heat and a much smaller portion into work output. The ratio of work output to chemical energy expenditure is called the efficiency of cardiac contraction, or simply *efficiency of the heart*. The maximum efficiency of the normal heart is between 20 and 25 per cent. In heart failure, this may fall to as low as 5 to 10 per cent.

## REGULATION OF HEART PUMPING

When a person is at rest, the heart pumps only 4 to 6 liters of blood each minute. During severe exercise, the heart may be required to pump four to seven times this amount. This section discusses the means by which the heart can adapt to such extreme increases in cardiac output.

The basic means by which the volume pumped by the heart is regulated are (1) intrinsic cardiac regulation of pumping in response to changes in volume of blood flowing into the heart and (2) control of the heart by the autonomic nervous system.

### Intrinsic Regulation of Heart Pumping—The Frank-Starling Mechanism

In Chapter 20, we see that the amount of blood pumped by the heart each minute is determined by the rate of blood flow into the heart from the veins, which is called *venous return*. That is, each peripheral tissue of the body controls its own blood flow, and the total of all the local blood flow through all the peripheral tissues returns by way of the veins to the right atrium. The heart in turn automatically pumps this incoming blood into the systemic arteries, so that it can flow around the circuit again.

This intrinsic ability of the heart to adapt to changing volumes of inflowing blood is called the *Frank-Starling mechanism of the heart*, in honor of Frank and Starling, two great physiologists of nearly a century ago. Basically, the Frank-Starling mechanism means that the greater the heart muscle is stretched during filling, the greater will be the force of contraction and the greater will be the quantity of blood pumped into the aorta. Or another way to express this is: *Within physiological limits, the heart pumps all the blood that comes to it without allowing excessive damming of blood in the veins.*



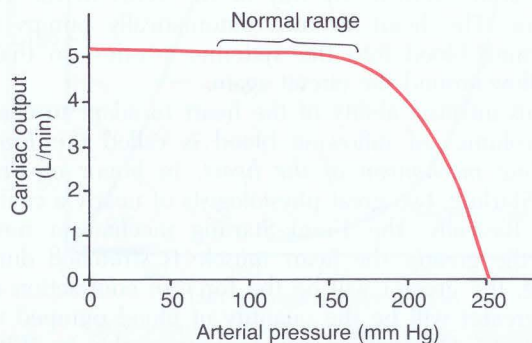
**WHAT IS THE EXPLANATION OF THE FRANK-STARLING MECHANISM?** When an extra amount of blood flows into the ventricles, the cardiac muscle itself is stretched to a greater length. This in turn causes the muscle to contract with increased force because the actin and myosin filaments are then brought to a more nearly optimal degree of interdigitation for force generation. Therefore, the ventricle, because of its increased pumping, automatically pumps the extra blood into the arteries. This ability of stretched muscle, up to an optimal length, to contract with increased force is characteristic of all striated muscle, as explained in Chapter 6, not simply of cardiac muscle.

In addition to the important effect of stretching the heart muscle, still another factor increases heart pumping when its volume is increased. Stretch of the right atrial wall directly increases the heart rate by 10 to 20 per cent; this, too, helps increase the amount of blood pumped each minute, although its contribution is much less than that of the Frank-Starling mechanism.

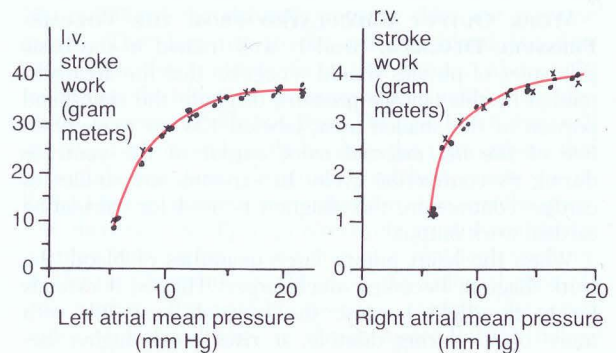
**LACK OF EFFECT ON CARDIAC OUTPUT OF CHANGES IN ARTERIAL PRESSURE LOAD.** One of the most important consequences of the Frank-Starling mechanism of the heart is that, within reasonable limits, changes in the arterial pressure against which the heart pumps have almost no effect on the rate at which blood is pumped by the heart each minute (the cardiac output). This effect is shown in Figure 9-8, which is a curve extrapolated to the human from data in dogs in which the arterial pressure was progressively changed by constricting the aorta, while the cardiac output was measured simultaneously. The significance of this effect is the following: Regardless of the arterial pressure load up to a reasonable limit, the important factor that determines the amount of blood pumped by the heart is still the rate of entry of blood into the heart.

### Ventricular Function Curves

One of the best ways to express the functional ability of the ventricles to pump blood is by ventricular



**Figure 9-8.** Constancy of cardiac output even in the face of wide changes in arterial pressure up to a pressure level of 160 mm Hg. Only when the arterial pressure rises above the normal operating pressure range does the pressure load cause the heart output to fall.



**Figure 9-9.** Left and right ventricular function curves in a dog depicting ventricular stroke work output as a function of left and right mean atrial pressures. (Curves reconstructed from data in Sarnoff: *Physiol. Rev.* 35:107, 1955.)

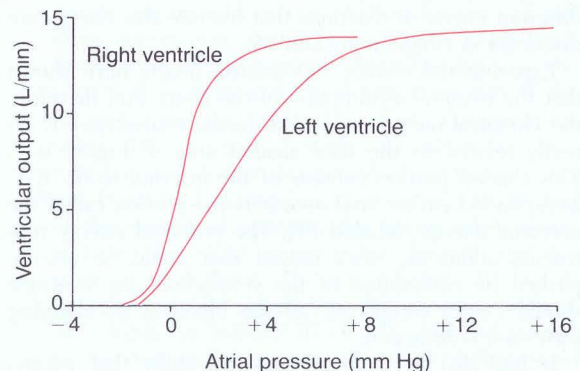
function curves, as shown in Figures 9-9 and 9-10. Figure 9-9 shows a type of ventricular function curve called the *stroke work output curve*. Note that as the atrial pressures increase, the stroke work outputs also increase until they reach the limit of the heart's ability.

Figure 9-10 shows another type of ventricular function curve called the *minute ventricular output curve*. These two curves represent function of the two ventricles of the human heart based on data extrapolated from lower animals. As each atrial pressure rises, the respective ventricular volume output per minute also increases.

Thus, ventricular function curves are another way of expressing the Frank-Starling mechanism of the heart. That is, as the ventricles fill to higher atrial pressures, the ventricular volume and strength of cardiac contraction increase, causing the heart to pump increased quantities of blood into the arteries.

### Control of the Heart by the Sympathetic and Parasympathetic Nerves

The pumping effectiveness of the heart is highly controlled by the *sympathetic* and *parasympathetic* (vagus) nerves, which abundantly supply the heart, as



**Figure 9-10.** Approximate normal right and left ventricular output curves for the normal resting human heart as extrapolated from data obtained in dogs.



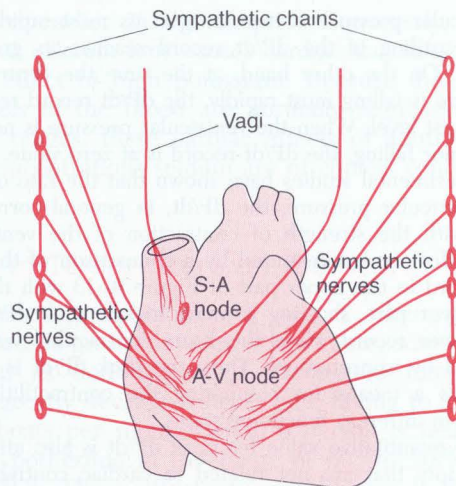


Figure 9-11. Cardiac nerves.

shown in Figure 9-11. The amount of blood pumped by the heart each minute, the *cardiac output*, can often be increased more than 100 per cent by sympathetic stimulation. By contrast, it can be decreased to as low as zero or almost zero by vagal (parasympathetic) stimulation.

**EXCITATION OF THE HEART BY THE SYMPATHETIC NERVES.** Strong sympathetic stimulation can increase the heart rate in adult humans to 180 to 200 and, rarely, even 250 beats per minute in young people. Also, sympathetic stimulation increases the force with which the heart muscle contracts, therefore increasing the volume of blood pumped and increasing the ejection pressure. Thus, sympathetic stimulation can often increase the cardiac output as much as twofold to threefold, in addition to the increased output that might be caused by the Frank-Starling mechanism already discussed.

On the other hand, inhibition of the sympathetic nervous system can be used to decrease cardiac pumping to a moderate extent in the following way: Under normal conditions, the sympathetic nerve fibers to the heart discharge continuously at a slow rate that maintains pumping at about 30 per cent above that with no sympathetic stimulation. Therefore, when the activity of the sympathetic nervous system is depressed below normal, this decreases both the heart rate and the strength of ventricular contraction, thereby decreasing the level of cardiac pumping to as much as 30 per cent below normal.

**PARASYMPATHETIC (VAGAL) STIMULATION OF THE HEART.** Strong vagal stimulation of the heart can stop the heartbeat for a few seconds, but then the heart usually “escapes” and beats at a rate of 20 to 40 beats per minute thereafter. In addition, strong vagal stimulation can decrease the strength of heart contraction by 20 to 30 per cent. This decrease is not greater because the vagal fibers are distributed mainly to the atria but not much to the ventricles where the power contraction of the heart occurs. Nevertheless, the great decrease in heart rate combined with a slight decrease in heart contraction can decrease ventricular pumping

50 or more per cent, especially so when the heart is working under great workload.

**EFFECT OF SYMPATHETIC OR PARASYMPATHETIC STIMULATION ON THE CARDIAC FUNCTION CURVE.** Figure 9-12 shows four cardiac function curves. They are much the same as the ventricular function curves of Figure 9-10. However, they represent function of the entire heart rather than of a single ventricle; they show the relation between the right atrial pressure at the input of the heart and cardiac output into the aorta.

The curves of Figure 9-12 demonstrate that at any given right atrial pressure, the cardiac output increases with increasing sympathetic stimulation and decreases with increasing parasympathetic stimulation. The changes in output caused by nerve stimulation result from *changes in heart rate* and *changes in contractile strength of the heart* because both of these affect cardiac output.

### Effect of Heart Rate on Function of the Heart as a Pump

In general, the more times the heart beats per minute, the more blood it can pump, but there are important limitations to this effect. For instance, once the heart rate rises above a critical level, the heart strength itself decreases, presumably because of overuse of metabolic substrates in the cardiac muscle. In addition, the period of diastole between the contractions becomes so reduced that blood does not have time to flow adequately from the atria into the ventricles. For these reasons, when the heart rate is increased artificially by *electrical stimulation*, the normal large animal heart has its peak ability to pump large quantities of blood at a heart rate between 100 and 150 beats per minute. On the other hand, when its rate is increased by *sympathetic stimulation*, it reaches its peak ability

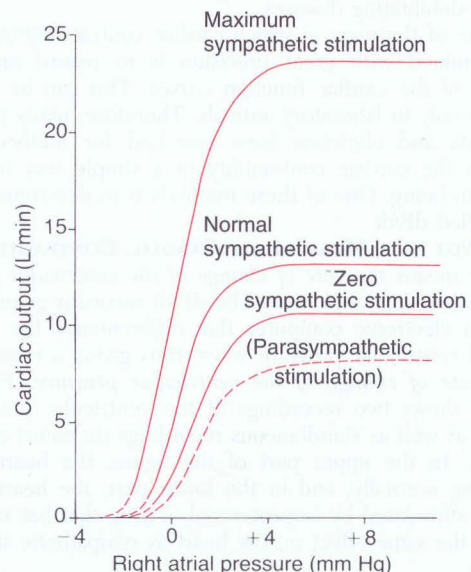
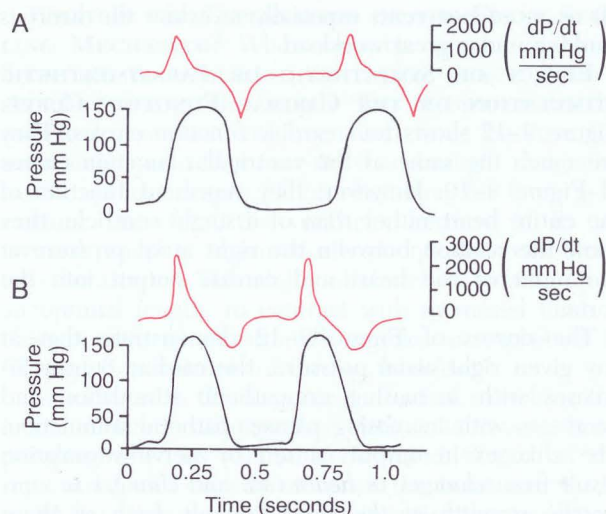


Figure 9-12. Effect on the cardiac output curve of different degrees of sympathetic and parasympathetic stimulation.





**Figure 9-13.** Simultaneous recordings of ventricular pressure and dP/dt. A shows results from a normal heart, and B shows results from a heart stimulated by isoproterenol. (Modified from Mason et al., in Sodeman and Sodeman (eds.): *Pathologic Physiology*. 6th Ed. Philadelphia, W.B. Saunders Company, 1979.)

to pump blood at a heart rate between 170 and 220 beats per minute. The reason for this difference is that sympathetic stimulation not only increases the heart rate but also increases heart strength. At the same time, it decreases the duration of systolic contraction and allows more time for filling during diastole.

### Assessment of Cardiac Contractility

Although it is easy to determine the heart rate by simply timing the pulse, it has always been difficult to determine the strength of contraction of the heart, commonly called *cardiac contractility*. The change in contractility often is exactly opposite to the change in heart rate. Indeed, this effect occurs almost invariably in heart-debilitating diseases.

One of the ways in which cardiac contractility can be determined with great precision is to record one or more of the cardiac function curves. This can be done easily only in laboratory animals. Therefore, many physiologists and clinicians have searched for methods to assess the cardiac contractility in a simple way in the human being. One of these methods is to determine the so-called dP/dt.

**DP/DT AS A MEASURE OF CARDIAC CONTRACTILITY.** dP/dt means the *rate of change of the ventricular pressure* with respect to time. The dP/dt record is generated by an electronic computer that *differentiates* the measured ventricular pressure wave, thus giving a record of the *rate of change of the ventricular pressure*. Figure 9-13 shows two recordings of the ventricular pressure wave as well as simultaneous recordings (in color) of the dP/dt. In the upper part of the figure, the heart was beating normally, and in the lower part, the heart had been stimulated by isoproterenol, a drug that has essentially the same effect on the heart as sympathetic stimulation.

Note in the upper record that at the same time the

ventricular pressure is increasing at its most rapid rate, the recording of the dP/dt record reaches its greatest height. On the other hand, at the time the ventricular pressure is falling most rapidly, the dP/dt record reaches its lowest level. When the ventricular pressure is neither rising nor falling, the dP/dt record is at zero value.

Experimental studies have shown that the rate of rise of ventricular pressure, the dP/dt, in general correlates well with the strength of contraction of the ventricle. This effect is demonstrated by a comparison of the dP/dt record in the upper part of Figure 9-13 with that in the lower part, showing a much higher peak dP/dt in the lower record when the heart contractility was increased by isoproterenol. Thus, the *peak* dP/dt is often used as a means for comparing the contractilities of hearts in different functional states.

The quantitative value for peak dP/dt is also affected by factors that are not related to cardiac contractility. For instance, the value is increased by both increased input pressure to the left ventricle (the end-diastolic ventricular pressure), which is the *preload* of the ventricle, and the pressure in the aorta against which the heart is pumping the blood, called the *afterload*. Therefore, it is often difficult to use dP/dt as a measure of contractility in comparing hearts from one person to another because one of these factors may differ. For this reason, other quantitative measures have been used in attempts to assess cardiac contractility. One of these has been to use dP/dt divided by the instantaneous pressure in the ventricle, or (dP/dt)/P.

### Effect of Potassium and Calcium Ions on Heart Function

In the discussion of membrane potentials in Chapter 5, it is pointed out that potassium ions have a marked effect on membrane potentials and action potentials, and in Chapter 6, it is noted that calcium ions play an especially important role in activating the muscle contractile process. Therefore, it is to be expected that the concentrations of these two ions in the extracellular fluids also has important effects on cardiac pumping.

**EFFECT OF POTASSIUM IONS.** Excess potassium in the extracellular fluids causes the heart to become extremely dilated and flaccid and slows the heart rate. Large quantities can also block conduction of the cardiac impulse from the atria to the ventricles through the A-V bundle. Elevation of potassium concentration to only 8 to 12 mEq/liter—two to three times the normal value—can cause such weakness of the heart and abnormal rhythm that this can cause death.

These effects are caused partially by the fact that a high potassium concentration in the extracellular fluids decreases the resting membrane potential in the cardiac muscle fibers, as explained in Chapter 5. As the membrane potential decreases, the intensity of the action potential also decreases, which makes the contraction of the heart progressively weaker.

**EFFECT OF CALCIUM IONS.** An excess of calcium ions causes effects almost exactly opposite to those of potassium ions, causing the heart to go into spastic contraction. This is caused by the direct effect of calcium ions in exciting the cardiac contractile process, as



explained earlier in the chapter. Conversely, a deficiency of calcium ions causes cardiac flaccidity, similar to the effect of high potassium. Because the calcium ion levels in the blood are normally regulated within narrow ranges, these cardiac effects of abnormal calcium concentrations seldom are of clinical concern.

## Effect of Temperature on the Heart

Increased temperature, as occurs when one has fever, causes greatly increased heart rate, sometimes to as great as double normal. Decreased temperature causes greatly decreased heart rate, falling to as low as a few beats per minute when a person is near death from hypothermia in the range of 60° to 70°F (15.5° to 21.1°C). These effects presumably result from the fact that heat causes increased permeability of the muscle membrane to the ions, resulting in acceleration of the self-excitation process.

Contractile strength of the heart is often enhanced temporarily by a moderate increase in temperature, but prolonged elevation of the temperature exhausts the metabolic systems of the heart and causes weakness.

## REFERENCES

- Beller, G. A.: *Clinical Nuclear Cardiology*. Philadelphia, W. B. Saunders Co., 1994.
- Brady, A. J.: Mechanical properties of isolated cardiac myocytes. *Physiol. Rev.*, 71:413, 1991.
- Cowley, A. W., Jr., and Guyton, A. C.: Heart rate as a determinant of cardiac output in dogs with arteriovenous fistula. *Am. J. Cardiol.*, 28:321, 1971.
- Craig, M., et al.: *Diagnostic Medical Sonography: Echocardiography*, Vol. II. Philadelphia, J. B. Lippincott, 1991.
- Driedzic, W. R., and Gesser, H.: Energy metabolism and contractility in ectothermic vertebrate hearts: Hypoxia, acidosis, and low temperature. *Physiol. Rev.*, 74:221, 1994.
- Fedida, D., et al.:  $\alpha_1$ -Adrenoceptors in myocardium: Functional aspects and transmembrane signaling mechanisms. *Physiol. Rev.*, 73:469, 1993.
- FitzGerald, P. G.: Gap junction heterogeneity in liver, heart, and lens. *News Physiol. Sci.*, 3:206, 1988.
- Fozzard, H. A., et al.: *The Heart and Cardiovascular System: Scientific Foundations*. New York, Raven Press, 1991.
- Gadsby, D. C.: The Na/K pump of cardiac cells. *Annu. Rev. Biophys. Bioeng.*, 13:373, 1984.
- Gevers, W.: Protein metabolism of the heart. *J. Mol. Cell. Cardiol.*, 16:3, 1984.
- Guyton, A. C.: Determination of cardiac output by equating venous return curves with cardiac response curves. *Physiol. Rev.*, 35:123, 1955.
- Guyton, A. C., et al.: *Circulatory Physiology: Cardiac Output and Its Regulation*. 2nd Ed. Philadelphia, W. B. Saunders Co., 1973.
- Hudicka, O., et al.: Angiogenesis in skeletal and cardiac muscle. *Physiol. Rev.*, 72:369, 1992.
- Iskandrian, A. S.: *Myocardial Viability: Detection and Clinical Relevance*. Hingham, Mass., Kluwer Academic Publishers, 1994.
- Jacobus, W. E.: Respiratory control and the integration of heart high-energy phosphate metabolism by mitochondrial creatine kinase. *Annu. Rev. Physiol.*, 47:707, 1985.
- Kelley, W. N.: *Essentials of Internal Medicine*. 2nd Ed. Philadelphia, J. B. Lippincott, 1994.
- Manfredi, J. P., and Holmes, E. W.: Purine salvage pathways in myocardium. *Annu. Rev. Physiol.*, 47:691, 1985.
- Mela-Riker, L. M., and Bukoski, R. D.: Regulation of mitochondrial activity in cardiac cells. *Annu. Rev. Physiol.*, 47:645, 1985.
- Morgan, H. E., et al.: Biochemical mechanisms of cardiac hypertrophy. *Annu. Rev. Physiol.*, 49:533, 1987.
- Nagano, M., et al.: *The Adaptive Heart*. New York, Raven Press, 1994.
- Nozawa, T., et al.: Relation between oxygen consumption and pressure-volume area of in situ dog heart. *Am. J. Physiol.*, 253:H31, 1987.
- Page, E., and Shibata, Y.: Permeable junctions between cardiac cells. *Annu. Rev. Physiol.*, 43:431, 1981.
- Rovetto, M. J.: Myocardial nucleotide transport. *Annu. Rev. Physiol.*, 47:605, 1985.
- Ruegg, J. C.: Dependence of cardiac contractility on myofibrillar calcium sensitivity. *News Physiol. Sci.*, 2:179, 1987.
- Sarnoff, S. J.: Myocardial contractility as described by ventricular function curves. *Physiol. Rev.*, 35:107, 1955.
- Schwartz, J.-C., et al.: Histaminergic transmission in the mammalian brain. *Physiol. Rev.*, 71:1, 1991.
- Sperelakis, N.: *Physiology and Pathophysiology of the Heart*, 3rd Ed. Hingham, Mass., Kluwer Academic Publishers, 1994.
- Starling, E. H.: *The Linacre Lecture on the Law of the Heart*. London, Longmans Green & Co., 1918.
- Suga, H., et al.: Critical evaluation of left ventricular systolic pressure volume area as predictor of oxygen consumption rate. *Jpn. J. Physiol.*, 30:907, 1980.
- Suga, H., et al.: Prospective prediction of  $O_2$  consumption from pressure-volume area in dog hearts. *Am. J. Physiol.*, 252:H1258, 1987.
- Sugden, P. H.: The effects of hormonal factors on cardiac protein turnover. *Adv. Myocardiol.*, 5:105, 1985.
- Sugimoto, T., et al.: Effect of maximal work load on cardiac function. *Jpn. Heart J.*, 14:146, 1973.
- Sugimoto, T., et al.: Quantitative effect of low coronary pressure on left ventricular performance. *Jpn. Heart J.*, 9:46, 1968.
- Swynghedauw, B.: Developmental and functional adaptation of contractile proteins in cardiac and skeletal muscles. *Physiol. Rev.*, 66:710, 1986.
- Winegrad, S.: Calcium release from cardiac sarcoplasmic reticulum. *Annu. Rev. Physiol.*, 44:451, 1982.
- Winegrad, S.: Regulation of cardiac contractile proteins. Correlations between physiology and biochemistry. *Circ. Res.*, 55:565, 1984.

(See also Chapter 10.)



# Overview of the Circulation; Medical Physics of Pressure, Flow, and Resistance

## C H A P T E R 14

The function of the circulation is to service the needs of the tissues—to transport nutrients to the tissues, to transport waste products away, to conduct hormones from one part of the body to another, and, in general, to maintain an appropriate environment in all the tissue fluids for optimal survival and function of the cells.

Sometimes it is difficult to understand how blood flow is controlled in relation to the tissue's needs and to understand how the heart and circulation are controlled to provide the necessary cardiac output and arterial pressure. Also, what are the mechanisms for controlling blood volume, and how does this relate to all the other functions of the circulation? These are some of the questions that we propose to answer in this section on the circulation.

### PHYSICAL CHARACTERISTICS OF THE CIRCULATION

The circulation, shown in Figure 14–1, is divided into the *systemic circulation* and the *pulmonary circulation*. Because the systemic circulation supplies all the tissues of the body except the lungs with blood flow, it is also called the *greater circulation* or *peripheral circulation*.

Although the vascular system in each separate tissue of the body has its own special characteristics, some general principles of vascular function apply in all parts of the system. It is the purpose of this chapter to discuss these general principles.

**FUNCTIONAL PARTS OF THE CIRCULATION.** Before

attempting to discuss the details of function in the circulation, it is important to understand the overall role of each of its parts.

The function of the *arteries* is to transport blood *under high pressure* to the tissues. For this reason, the arteries have strong vascular walls, and blood flows rapidly in the arteries.

The *arterioles* are the last small branches of the arterial system, and they act as *control valves* through which blood is released into the capillaries. The arteriole has a strong muscular wall that is capable of closing the arteriole completely or allowing it to be dilated severalfold, thus having the capability of vastly altering blood flow to the capillaries in response to the needs of the tissues.

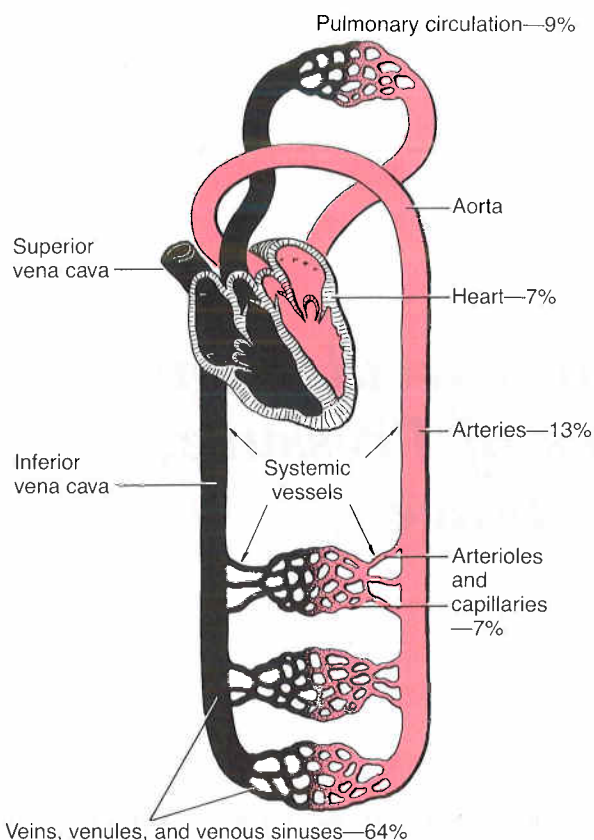
The function of the *capillaries* is to exchange fluid, nutrients, electrolytes, hormones, and other substances between the blood and the interstitial fluid. For this role, the capillary walls are very thin and permeable to small molecular substances.

The *venules* collect blood from the capillaries; they gradually coalesce into progressively larger veins.

The *veins* function as conduits for transport of blood from the tissues back to the heart, but equally important, they serve as a major reservoir of blood. Because the pressure in the venous system is very low, the venous walls are thin. Even so, they are muscular, and this allows them to contract or expand and thereby act as a controllable reservoir for extra blood, either a small or a large amount, depending on the needs of the body.

**VOLUMES OF BLOOD IN THE DIFFERENT PARTS OF THE CIRCULATION.** By far the greater proportion of the blood in the circulation is contained in the sys-





**Figure 14-1.** Distribution of blood volume in the different portions of the circulatory system.

temic veins. Figure 14-1 shows this, demonstrating that about 84 per cent of the entire blood volume of the body is in the systemic circulation, with 64 per cent in the veins, 13 per cent in the arteries, and 7 per cent in the systemic arterioles and capillaries. The heart contains 7 per cent of the blood and the pulmonary vessels, 9 per cent. Most surprising is the low blood volume in the capillaries of the systemic circulation. Yet it is here that the most important function of the systemic circulation occurs, diffusion of the substances back and forth between the blood and the tissues. This function is so important that it is discussed in detail in Chapter 16.

**CROSS-SECTIONAL AREAS AND VELOCITIES OF BLOOD FLOW.** If all the systemic vessels of each type were put side by side, their approximate total cross-sectional areas would be as follows:

	$\text{cm}^2$
Aorta	2.5
Small arteries	20
Arterioles	40
Capillaries	2500
Venules	250
Small veins	80
Venae cavae	8

Note particularly the much larger cross-sectional areas of the veins than of the arteries, averaging about

four times those of the corresponding arteries. This explains the large storage of blood in the venous system in comparison with that in the arterial system.

Because the same volume of blood flows through each segment of the circulation each minute, the velocity of blood flow is inversely proportional to its cross-sectional area. Thus, under resting conditions, the velocity averages about 33 cm/sec in the aorta but  $\frac{1}{1000}$  of this in the capillaries, or about 0.3 mm/sec. However, because the capillaries have a typical length of only 0.3 to 1 millimeter, the blood remains in the capillaries for only 1 to 3 seconds. This is a surprising fact because all diffusion that takes place through the capillary walls must occur in this exceedingly short time.

**PRESSURES IN THE VARIOUS PORTIONS OF THE CIRCULATION.** Because the heart pumps blood continually into the aorta, the pressure in the aorta is high, averaging about 100 mm Hg. Also, because the pumping by the heart is pulsatile, the arterial pressure fluctuates between a *systolic level* of 120 mm Hg and a *diastolic level* of 80 mm Hg, as shown in Figure 14-2. As the blood flows through the systemic circulation, its pressure falls progressively to about 0 mm Hg by the time it reaches the termination of the venae cavae in the right atrium of the heart.

The pressure in the systemic capillaries varies from as high as 35 mm Hg near the arteriolar ends to as low as 10 mm Hg near the venous ends, but their average "functional" pressure in most vascular beds is about 17 mm Hg, a pressure low enough that little of the plasma leaks out of the porous capillaries even though nutrients can diffuse easily to the tissue cells.

Note to the far right in Figure 14-2 the respective pressures in the different parts of the pulmonary circulation. In the pulmonary arteries, the pressure is pulsatile, just as in the aorta, but the pressure level is far less, at a systolic pressure of about 25 mm Hg and a diastolic pressure of 8 mm Hg, with a mean pulmonary arterial pressure of only 16 mm Hg. The pulmonary capillary pressure averages only 7 mm Hg. Yet the total blood flow through the lungs each minute is the same as that through the systemic circulation. The low pressures of the pulmonary system are in accord with the needs of the lungs because all that is required is to expose the blood in the pulmonary capillaries to the oxygen and other gases in the pulmonary alveoli, and the distances that the blood must flow before returning to the heart are short.

## BASIC THEORY OF CIRCULATORY FUNCTION

Although the details of circulatory function are complex, there are three basic principles that underlie all functions of the system.

**THE BLOOD FLOW TO EACH TISSUE OF THE BODY IS ALMOST ALWAYS PRECISELY CONTROLLED IN RELATION TO THE TISSUE NEEDS.** When tissues are active,



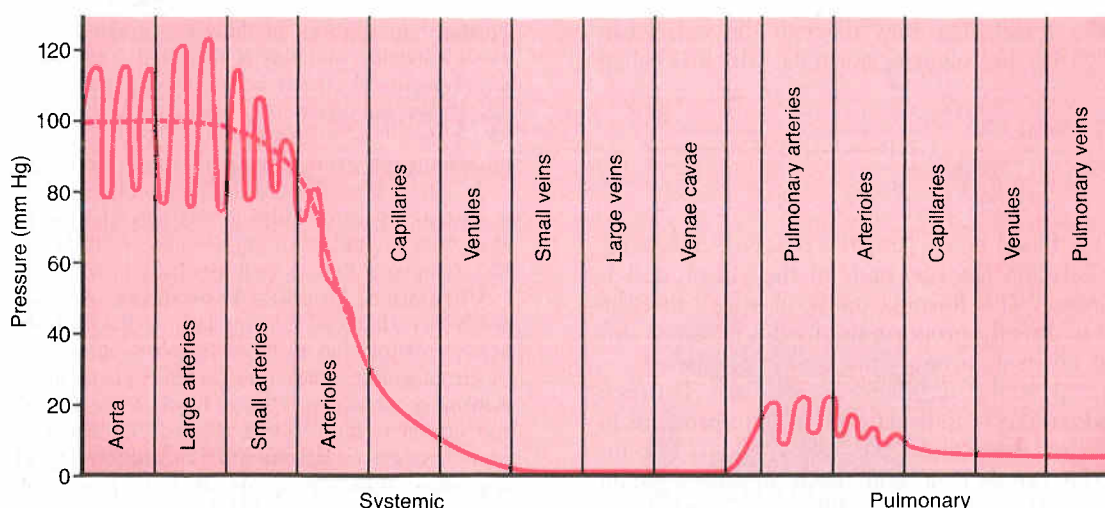


Figure 14-2. Blood pressures in the different portions of the circulatory system.

they need much more blood flow than when at rest—occasionally 20 to 30 times the resting level. Yet the heart normally cannot increase its cardiac output more than four to seven times. Therefore, it is not possible simply to increase the blood flow everywhere in the body when a particular tissue demands increased flow. Instead, the microvessels of each tissue continuously monitor the tissue needs, such as the availability of oxygen and other nutrients and the accumulation of carbon dioxide and other tissue waste products, and these in turn control the local blood flow precisely to the level required for the tissue activity. Also, nervous control of the circulation provides additional specific attributes to tissue blood flow control.

**THE CARDIAC OUTPUT IS CONTROLLED MAINLY BY THE SUM OF ALL THE LOCAL TISSUE FLOWS.** When blood flows through a tissue, it immediately returns by way of the veins to the heart. The heart responds to this increased inflow of blood by pumping almost all of it immediately back into the arteries from whence it came. In this sense, the heart acts as an automaton, responding to the demands of the tissues. The heart, however, is not perfect in its response. Therefore, it often needs help in the form of special nerve signals to make it pump the required amounts of blood flow.

**IN GENERAL, THE ARTERIAL PRESSURE IS CONTROLLED INDEPENDENTLY OF EITHER LOCAL BLOOD FLOW CONTROL OR CARDIAC OUTPUT CONTROL.** The circulatory system is provided with an extensive system for controlling the arterial pressure. For instance, if at any time the pressure falls significantly below its normal mean level of about 100 mm Hg, a barrage of nervous reflexes within seconds elicits a series of circulatory changes to raise the pressure back to normal, including increased force of heart pumping, contraction of the large venous reservoirs to provide more blood for the heart, and generalized constriction of most of the arterioles throughout the body, so that more blood will accumulate in the arterial tree. Then, over more prolonged periods, hours and days, the kid-

neys play an additional major role in pressure control both by secreting pressure-controlling hormones and by regulating the blood volume.

The importance of pressure control is that it prevents changes in blood flow in one area of the body from significantly affecting flow elsewhere in the body because the common pressure head for both areas is not allowed to change greatly.

Thus, in summary, the needs of the local tissues are served by the circulation. In the remainder of this chapter, we begin to discuss the basic details of the management of blood flow and the control of cardiac output and arterial pressure.

## INTERRELATIONSHIPS AMONG PRESSURE, FLOW, AND RESISTANCE

Flow through a blood vessel is determined by two factors: (1) the *pressure difference* between the two ends of the vessel (also frequently called “pressure gradient”), which is the force that pushes the blood through the vessel, and (2) the impediment to blood flow through the vessel, which is called *vascular resistance*. Figure 14-3 demonstrates these relations, showing a blood vessel segment located anywhere in the circulatory system.

$P_1$  represents the pressure at the origin of the vessel; at the other end the pressure is  $P_2$ . Resistance to flow ( $R$ ) occurs as a result of friction all along the

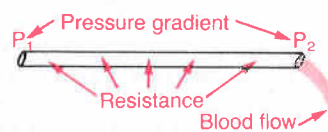


Figure 14-3. Relations among pressure, resistance, and blood flow.



inside of the vessel. The flow through the vessel can be calculated by the following formula, which is called *Ohm's law*:

$$Q = \frac{\Delta P}{R}, \quad (1)$$

in which  $Q$  is blood flow,  $\Delta P$  is the pressure difference ( $P_1 - P_2$ ) between the two ends of the vessel, and  $R$  is the resistance. This formula states, in effect, that the blood flow is directly proportional to the pressure difference but inversely proportional to the resistance.

Note that it is the *difference* in pressure between the two ends of the vessel, not the absolute pressure in the vessel, that determines the rate of flow. For instance, if the pressure at both ends of the segment were 100 mm Hg and yet no difference existed between the two ends, there would be no flow despite the presence of 100 mm Hg pressure.

Ohm's law expresses the most important of all the relations that the reader needs to understand to comprehend the hemodynamics of the circulation. Because of the extreme importance of this formula, the reader should also become familiar with its other algebraic forms:

$$\Delta P = Q \times R \quad (2)$$

$$R = \frac{\Delta P}{Q} \quad (3)$$

## Blood Flow

Blood flow means simply the quantity of blood that passes a given point in the circulation in a given period. Ordinarily, blood flow is expressed in *milliliters* or *liters per minute*, but it can be expressed in milliliters per second or in any other unit of flow.

The overall blood flow in the circulation of an adult at rest is about 5000 ml/min. This is called the *cardiac output* because it is the amount of blood pumped by the heart in a unit period.

**METHODS FOR MEASURING BLOOD FLOW.** Many mechanical and mechanoelectrical devices can be inserted in series with a blood vessel or, in some instances, applied to the outside of the vessel to measure flow. They are called *flowmeters*.

**Electromagnetic Flowmeter.** One of the most important devices for measuring blood flow *without opening the vessel* is the electromagnetic flowmeter, the principles of which are shown in Figure 14-4. Figure 14-4A shows generation of electromotive force in a wire that is moved rapidly in the cross-wise direction through a magnetic field. This is the well-known principle for production of electricity by the electric generator. Figure 14-4B shows that the same principle applies for generation of electromotive force in blood when it moves through a magnetic field. In this case, a blood vessel is placed between the poles of a strong magnet, and electrodes are placed on the two sides of the vessel perpendicular to the magnetic lines of force. When blood flows through the vessel, electrical voltage pro-

portional to the rate of flow is generated between the two electrodes, and this is recorded using an appropriate meter or electronic recording apparatus. Figure 14-4C shows an actual probe that is placed on a large blood vessel to record its blood flow. The probe contains both the strong magnet and the electrodes.

A special advantage of the electromagnetic flowmeter is that it can record changes in flow that occur in less than 0.01 second, allowing accurate recording of pulsatile changes in flow as well as steady flow.

**ULTRASONIC DOPPLER FLOWMETER.** Another type of flowmeter that can be applied to the outside of the vessel and that has many of the same advantages as the electromagnetic flowmeter is the ultrasonic Doppler flowmeter, shown in Figure 14-5. A minute piezoelectric crystal is mounted in the wall of the device. This crystal, when energized with an appropriate electronic apparatus, transmits sound at a frequency of several million cycles per second downstream along the flowing blood. A portion of the sound is reflected by the red blood cells in the flowing blood, so that reflected sound waves travel backward from the cells toward the crystal. These reflected waves have a lower frequency than the transmitted wave because the red cells are moving away from the transmitter crystal. This is called the Doppler effect. (It is the same effect that one experiences when a train approaches and passes by while blowing the whistle. Once the whistle has passed by the person, the pitch of the sound from the whistle suddenly becomes much lower than when the train is approaching.) The transmitted wave is intermittently cut off, and the reflected wave is received back onto the crystal and then amplified greatly by the electronic apparatus. Another portion of the apparatus determines the frequency difference between the transmitted wave and the reflected wave, thus also determining the velocity of blood flow.

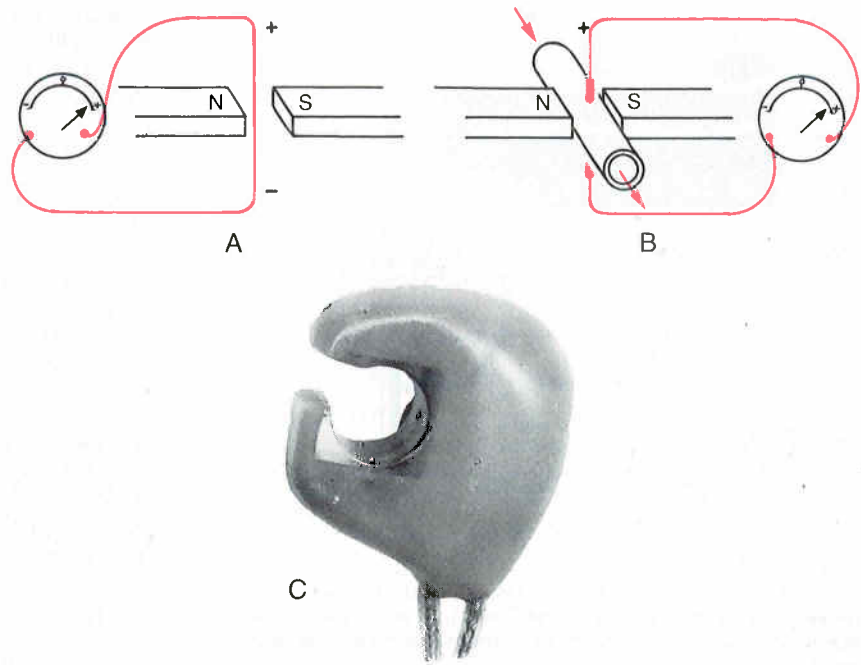
Like the electromagnetic flowmeter, the ultrasonic Doppler flowmeter is capable of recording rapid, pulsatile changes in flow as well as steady flow.

## Laminar Flow of Blood in Vessels

When blood flows at a steady rate through a long, smooth vessel, it flows in *streamlines*, with each layer of blood remaining the same distance from the wall. Also, the central portion of the blood stays in the center of the vessel. This type of flow is called *laminar flow* or *streamline flow*, and it is opposite to *turbulent flow*, which is blood flowing in all directions in the vessel and continually mixing within the vessel, as discussed subsequently.

**PARABOLIC VELOCITY PROFILE DURING LAMINAR FLOW.** When laminar flow occurs, the velocity of flow in the center of the vessel is far greater than that toward the outer edges. This is demonstrated by the experiment shown in Figure 14-6. In vessel A are two fluids, the one to the left colored by a dye and the one to the right, a clear fluid, but there is no flow in the vessel. Then the fluids are made to flow; a parabolic interface develops between the two fluids, as shown 1 second later in vessel B, showing that the portion of fluid adjacent to the vessel wall has hardly moved, the portion slightly away from the wall has moved a small distance, and the portion in the center of the vessel has moved a long distance. This effect is called the parabolic profile for the velocity of blood flow.





**Figure 14-4.** Flowmeter of the electromagnetic type, showing A, generation of an electromotive force in a wire as it passes through an electromagnetic field; B, generation of an electromotive force in electrodes on a blood vessel when the vessel is placed in a strong magnetic field and blood flows through the vessel; and C, a modern electromagnetic flowmeter probe for chronic implantation around blood vessels.

The cause of the parabolic profile is the following: The fluid molecules touching the wall hardly move because of adherence to the vessel wall. The next layer of molecules slips over these, the third layer over the second, the fourth layer over the third, and so forth. Therefore, the fluid in the middle of the vessel can move rapidly because many layers of slipping molecules exist between the middle of the vessel and the vessel wall, and each layer toward the center flows progressively more rapidly than the previous layer.

**TURBULENT FLOW OF BLOOD UNDER SOME CONDITIONS.** When the rate of blood flow becomes too great, when it passes an obstruction in a vessel, when it makes a sharp turn, or when it passes over a rough surface, the flow may become *turbulent* rather than streamline. Turbulent flow means that the blood flows crosswise in the vessel as well as along the vessel, usually forming whorls in the blood called *eddy currents*. They are similar to the whirlpools that one sees in a rapidly flowing river at a point of obstruction.

When eddy currents are present, blood flows with much greater resistance than when the flow is streamline because the eddies add tremendously to the overall friction of flow in the vessel.

The tendency for turbulent flow increases in direct proportion to the velocity of blood flow, in direct proportion to the diameter of the blood vessel, and in-

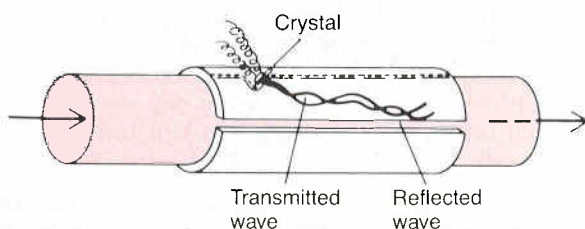
versely proportional to the viscosity of the blood divided by its density in accordance with the following equation:

$$Re = \frac{v \cdot d}{\frac{\eta}{\rho}}, \quad (4)$$

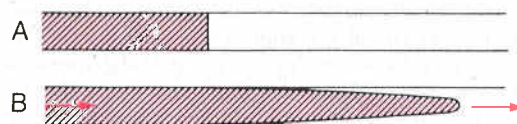
in which *Re* is *Reynolds' number* and is the measure of the tendency for turbulence to occur, *v* is the velocity of blood flow (in centimeters per second), *d* is diameter,  $\eta$  is the viscosity (in poises), and  $\rho$  is the density. When Reynolds' number rises above 200 to 400, turbulent flow occurs at some branches of vessels but dies out along the smooth portions of the vessels. When Reynolds' number rises above about 2000, turbulence usually occurs even in a straight, smooth vessel. Reynolds' number very often rises to 2000 in some large arteries; as a result, there is almost always some turbulence of flow in some arteries, such as at the root of the aorta and at the major arterial branches.

## Blood Pressure

**STANDARD UNITS OF PRESSURE.** Blood pressure is almost always measured in *millimeters of mercury* (*mm Hg*) because the mercury manometer (shown in

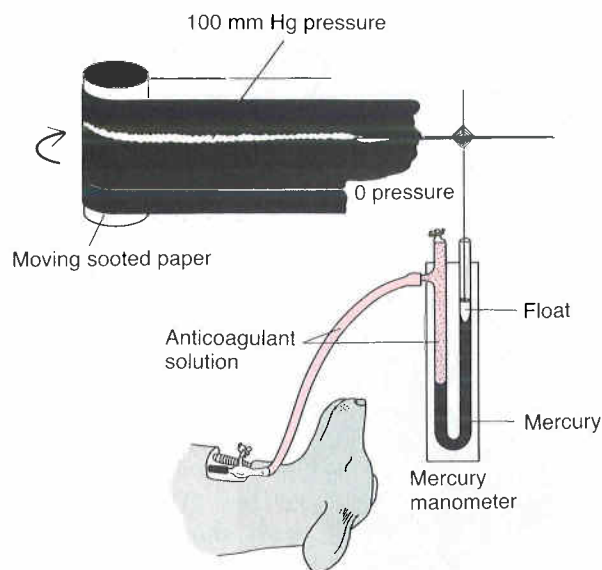


**Figure 14-5.** Ultrasonic Doppler flowmeter.



**Figure 14-6.** Experiment demonstrating parabolic blood flow with much faster flow in the center of a vessel. A, Two fluids before flow begins; B, the same fluids 1 second after flow begins.





**Figure 14-7.** Recording arterial pressure with a mercury manometer, a method that has been used in the manner shown above for recording pressure throughout the history of physiology.

Figure 14-7) has been used since antiquity as the standard reference for measuring blood pressure. Actually, blood pressure means the *force exerted by the blood against any unit area of the vessel wall*. When one says that the pressure in a vessel is 50 mm Hg, one means that the force exerted is sufficient to push a column of mercury up to a level 50 mm high. If the pressure is 100 mm Hg, it will push the column of mercury up to 100 millimeters.

Occasionally, pressure is measured in *centimeters of water* (cm H<sub>2</sub>O). A pressure of 10 cm H<sub>2</sub>O means a pressure sufficient to raise a column of water to a height of 10 centimeters. *One millimeter of mercury equals 1.36 cm H<sub>2</sub>O* because the specific gravity of mercury is 13.6 times that of water, and 1 centimeter is 10 times as great as 1 millimeter.

#### HIGH-FIDELITY METHODS FOR MEASURING BLOOD

**PRESSURE.** The mercury in the mercury manometer has so much *inertia* that it cannot rise and fall rapidly. For this reason, the mercury manometer, although excellent for recording steady pressures, cannot respond to pressure changes that occur more rapidly than about one cycle every 2 to 3 seconds. Whenever it is desired to record rapidly changing pressures, some other type of pressure recorder is needed. Figure 14-8 demonstrates the basic principles of three electronic pressure *transducers* commonly used for converting pressure into electrical signals and then recording the pressure on a high-speed electrical recorder. Each of these transducers uses a very thin, highly stretched metal membrane that forms one wall of the fluid chamber. The fluid chamber in turn is connected through a needle or catheter with the vessel in which the pressure is to be measured. When the pressure is high, the membrane bulges slightly, and when it is low, it returns toward its resting position.

In Figure 14-8A, a simple metal plate is placed a few thousandths of an inch above the membrane. When the membrane bulges, the membrane comes closer to the plate, which increases the electrical capacitance between these two, and this change in capacitance can be recorded by an appropriate electronic system.

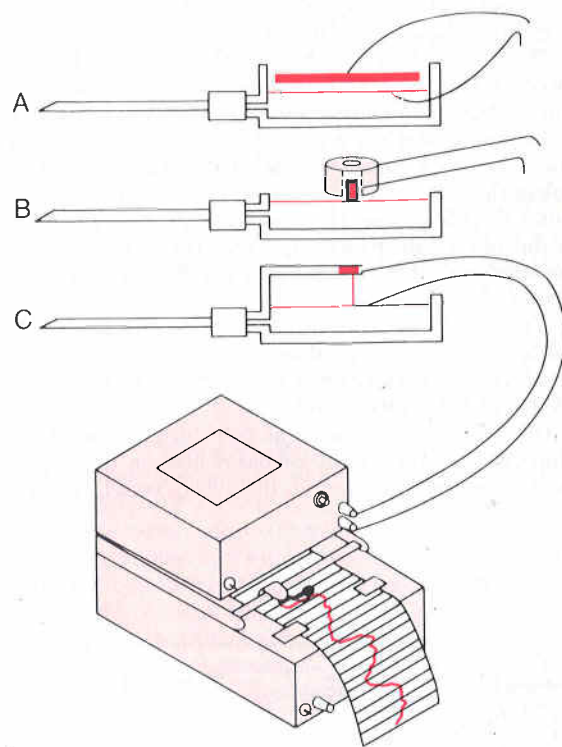
In Figure 14-8B, a small iron slug rests on the membrane, and this can be displaced upward into a coil. Movement of the iron changes the *inductance* of the coil, and this, too, can be recorded electronically.

Finally, in Figure 14-8C, a very thin, stretched resistance wire is connected to the membrane. When this wire is greatly stretched, its resistance increases; when it is less stretched, its resistance decreases. These changes also can be recorded by means of an electronic system.

With some of these high-fidelity types of recording systems, pressure cycles up to 500 cycles per second have been recorded accurately. In common use are recorders capable of registering pressure changes that occur as rapidly as 20 to 100 cycles per second, in the manner shown on the recording paper in Figure 14-8.

### Resistance to Blood Flow

**UNITS OF RESISTANCE.** Resistance is the impediment to blood flow in a vessel, but it cannot be measured by any direct means. Instead, resistance must be calculated from measurements of blood flow and pressure difference in the vessel. If the pressure difference between two points in a vessel is 1 mm Hg and the flow is 1 ml/sec, the resistance is said to be 1 *peripheral resistance unit*, usually abbreviated *PRU*.



**Figure 14-8.** Principles of three types of electronic transducers for recording rapidly changing blood pressures (explained in the text).



**Expression of Resistance in CGS Units.** Occasionally, a basic physical unit called the CGS (centimeters, grams, seconds) unit is used to express resistance. This unit is *dyne seconds/centimeters*<sup>5</sup>. Resistance in these units can be calculated by the following formula:

$$R \left( \text{in } \frac{\text{dyne sec}}{\text{cm}^5} \right) = \frac{1333 \times \text{mm Hg}}{\text{ml/sec}} \quad (5)$$

**TOTAL PERIPHERAL RESISTANCE AND TOTAL PULMONARY RESISTANCE.** The rate of blood flow through the circulatory system when a person is at rest is close to 100 ml/sec, and the pressure difference from the systemic arteries to the systemic veins is about 100 mm Hg. Therefore, in round figures, the resistance of the entire systemic circulation, called the *total peripheral resistance*, is about 100/100 or 1 PRU. In some conditions in which all the blood vessels throughout the body become strongly constricted, the total peripheral resistance rises to as high as 4 PRU, and when the vessels become greatly dilated, it can fall to as little as 0.2 PRU.

In the pulmonary system, the mean right arterial pressure averages 16 mm Hg and the mean left atrial pressure averages 2 mm Hg, giving a net pressure difference of 14 mm. Therefore, in round figures, the *total pulmonary resistance* at rest calculates to be about 0.14 PRU.

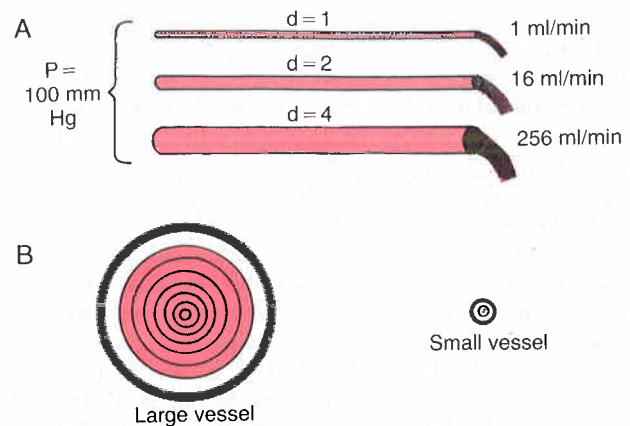
**“CONDUCTANCE” OF BLOOD IN A VESSEL AND ITS RELATION TO RESISTANCE.** Conductance is a measure of the blood flow through a vessel for a given pressure difference. This is generally expressed in terms of milliliters per second per millimeter of mercury pressure, but it can also be expressed in terms of liters per second per millimeter of mercury or in any other units of blood flow and pressure.

It is immediately evident that conductance is the reciprocal of resistance in accord with the following equation:

$$\text{Conductance} = \frac{1}{\text{Resistance}} \quad (6)$$

**VERY SLIGHT CHANGES IN DIAMETER OF A VESSEL CHANGE ITS CONDUCTANCE TREMENDOUSLY!** Slight changes in the diameter of a vessel cause tremendous changes in its ability to conduct blood when the blood flow is streamline. This is demonstrated forcefully by the experiment in Figure 14-9A, which shows three vessels with relative diameters of 1, 2, and 4 but with the same pressure difference of 100 mm Hg between the two ends of the vessels. Although the diameters of these vessels increase only 4-fold, the respective flows are 1, 16, and 256 ml/min, which is a 256-fold increase in flow. Thus, the conductance of the vessel increases in proportion to the *fourth power of the diameter*, in accord with the following formula:

$$\text{Conductance} \propto \text{Diameter}^4 \quad (7)$$



**Figure 14-9.** A, Demonstration of the effect of vessel diameter on blood flow. B, Concentric rings of blood flowing at different velocities; the farther away from the vessel wall, the faster the flow.

**POISEUILLE'S LAW.** The cause of this great increase in conductance when the diameter increases can be explained by referring to Figure 14-9B, which shows cross sections of a large and a small vessel. The concentric rings inside the vessels indicate that the velocity of flow in each ring is different from that in the other rings because of *laminar flow*, which is discussed earlier in the chapter. That is, the blood in the ring touching the wall of the vessel is hardly flowing because of its adherence to the vascular endothelium. The next ring of blood slips past the first ring and, therefore, flows more rapidly. The third, fourth, fifth, and sixth rings likewise flow at progressively increasing velocities. Thus, the blood that is near the wall of the vessel flows extremely slowly, whereas that in the middle of the vessel flows extremely rapidly.

In the small vessel, essentially all the blood is near the wall, so that the extremely rapidly flowing central stream of blood simply does not exist.

By integrating the velocities of all the concentric rings of flowing blood and multiplying them by the areas of the rings, one can derive the following formula, known as Poiseuille's law:

$$Q = \frac{\pi \Delta P r^4}{8 \eta l} \quad (8)$$

in which  $Q$  is the rate of blood flow,  $\Delta P$  is the pressure difference between the ends of the vessel,  $r$  is the radius of the vessel,  $l$  is the length of the vessel, and  $\eta$  is the viscosity of the blood.

Note particularly in this equation that the rate of blood flow is directly proportional to the *fourth power of the radius* of the vessel, which demonstrates once again that the diameter of a blood vessel (which is equal to twice the radius) plays by far the greatest role of all factors in determining the rate of blood flow through a vessel.

**IMPORTANCE OF THE VESSEL DIAMETER “FOURTH POWER LAW” IN DETERMINING ARTERIOLAR RESISTANCE.** In the systemic circulation, about two thirds of



the resistance is in the small arterioles. The internal diameters of these range from as little as 4 micrometers to as great as 25 micrometers. However, their strong vascular walls allow the internal diameters to change tremendously, often as much as fourfold. From the fourth power law discussed earlier that relates blood flow to diameter of the vessel, one can see that a 4-fold increase in vessel diameter theoretically could increase the flow as much as 256-fold. Thus, this fourth power law makes it possible for the arterioles, responding with only small changes in diameter to nervous signals or local tissue signals, either to turn off almost completely the blood flow to the tissue or at other times to cause a vast increase in flow. Indeed, ranges of blood flow of more than a hundredfold in small tissue areas have been recorded between the limits of maximum arteriolar constriction and maximum arteriolar dilatation.

### Effect of Blood Hematocrit and Viscosity on Vascular Resistance and Blood Flow

Note especially that one of the important factors in Poiseuille's law is the viscosity of the blood. The greater the viscosity, the less the flow in a vessel if all other factors are constant. Furthermore, *the viscosity of normal blood is about three times as great as the viscosity of water.*

But what makes the blood so viscous? It is mainly the large numbers of suspended red cells in the blood, each of which exerts frictional drag against adjacent cells and against the wall of the blood vessel.

**HEMATOCRIT.** The percentage of the blood that is cells is called the hematocrit. Thus, if a person has a hematocrit of 40, 40 per cent of the blood volume is cells and the remainder is plasma. The hematocrit of men averages about 42, whereas that of women averages about 38. These values vary tremendously, depending on whether or not the person has anemia, the degree of bodily activity, and the altitude at which the person resides. These effects are discussed in relation to the red blood cells and their oxygen transport function in Chapter 32.

Hematocrit is determined by centrifuging blood in a calibrated tube, such as that shown in Figure 14-10. The calibration allows direct reading of the percentage of cells.

**EFFECT OF HEMATOCRIT ON BLOOD VISCOSITY.** The greater the percentage of cells in the blood—that is, the greater the hematocrit—the more friction there is between successive layers of blood, and this friction determines viscosity. Therefore, the viscosity of blood increases drastically as the hematocrit increases, as shown in Figure 14-11. If we consider the viscosity of whole blood at normal hematocrit to be about 3, this means that three times as much pressure is required to force whole blood as to force water through the same tube. When the hematocrit rises to 60 or 70, which it often does in polycythemia, the blood viscosity

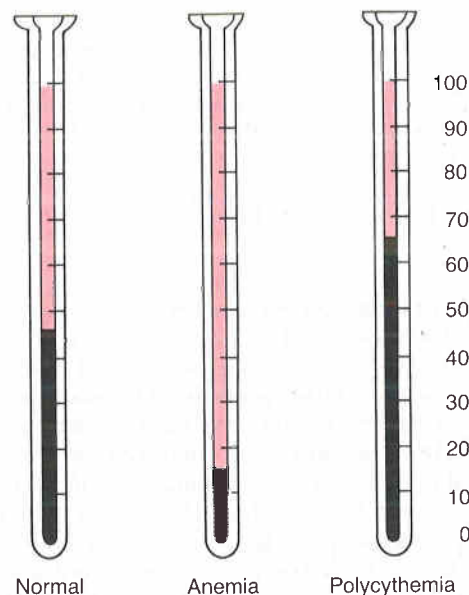


Figure 14-10. Hematocrits in a normal person and in patients with anemia and polycythemia.

can become as great as 10 times that of water and its flow through blood vessels is greatly retarded.

Another factor that affects blood viscosity is the concentration and types of proteins in the plasma, but these effects are so much less important than the effect of hematocrit that they are not significant considerations in most hemodynamic studies. The viscosity of blood plasma is about 1.5 times that of water.

**Blood Viscosity in the Microcirculation.** Because most resistance in the circulatory system occurs in the very small blood vessels, it is especially important to know how blood viscosity affects blood flow in these minute vessels. At least three additional factors besides hematocrit and plasma proteins affect blood viscosity in these vessels.

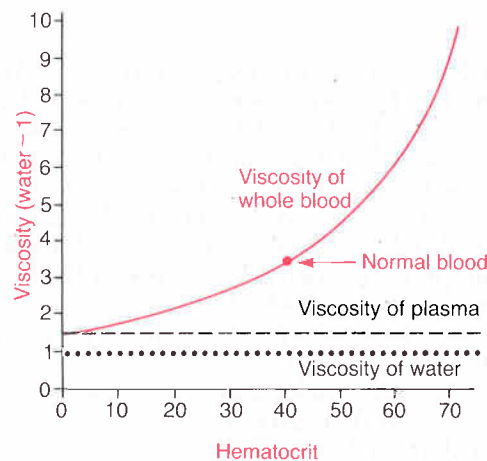
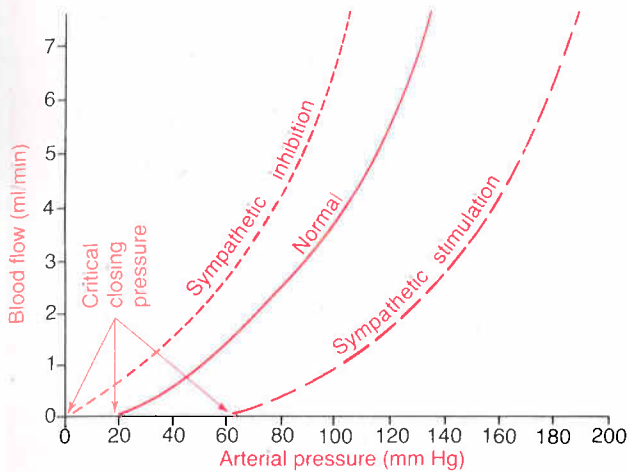


Figure 14-11. Effect of hematocrit on viscosity.





**Figure 14-12.** Effect of arterial pressure on blood flow through a blood vessel at different degrees of vascular tone caused by increased or decreased sympathetic stimulation of the vessels.

1. Blood flow in minute tubes exhibits far less viscous effect than it does in large vessels. This is called the *Fahraeus-Lindqvist effect*. It begins to appear when the vessel diameter falls below about 1.5 millimeters. In tubes as small as capillaries, the viscosity of whole blood is as little as one half that in large vessels. The Fahraeus-Lindqvist effect is caused by alignment of the red cells as they pass through the vessels. That is, the red cells, instead of moving randomly, line up and move through the vessels as a single plug, thus eliminating the viscous resistance that occurs internally in the blood itself. The Fahraeus-Lindqvist effect, however, is probably more than offset by the next two effects under most conditions.

2. The viscosity of blood increases tremendously as its velocity of flow decreases. Because the velocity of blood flow in the small vessels is extremely slow, often less than 1 mm/sec, blood viscosity can increase as much as 10-fold from this factor alone. This effect is partly caused by adherence of the slowly moving red cells to one another (formation of rouleaux and larger aggregates) as well as to the vessel walls.

3. Cells often become stuck at constrictions in small blood vessels; this happens especially in capillaries where the nuclei of endothelial cells protrude into the

capillary lumen. When this occurs, blood flow can become blocked for a fraction of a second or for much longer periods, thus giving an apparent effect of greatly increased viscosity.

Because of these special effects that occur in the minute vessels of the circulatory system, it has been impossible to derive an exact mathematical relation that describes how the hematocrit affects viscosity in the minute vessels, which is the place in the circulatory system where viscosity plays its most important role. Because some of these effects decrease viscosity and others increase viscosity, it is usually assumed that the overall viscous effects in the small vessels are about equivalent to those that occur in the larger vessels.

### Effects of Pressure on Vascular Resistance and Tissue Blood Flow

From the discussion thus far, one would expect that an increase in arterial pressure would cause a proportionate increase in blood flow through the various tissues of the body. However, the effect of pressure on blood flow is far greater than one would expect, as shown in Figure 14-12. The reason for this is that an increase in arterial pressure not only increases the force that tends to push blood through the vessels but also distends the vessels at the same time, which decreases their resistance. Thus, increased pressure increases the flow in two ways, and for most tissues, blood flow at 100 mm Hg arterial pressure is usually about four to six times as great as the blood flow at 50 mm Hg.

Note also in Figure 14-12 the large changes in blood flow that can be caused by either increased or decreased sympathetic stimulation of the peripheral blood vessels. Thus, as shown in the figure, inhibition of sympathetic stimulation greatly dilates the vessels and can increase the blood flow twofold or more. Conversely, strong sympathetic stimulation can constrict the vessels so much that blood flow can be decreased to as low as zero for short periods despite high arterial pressure.

### REFERENCES

See references for Chapter 15.