

# STEDMAN'S Medical Dictionary

27th Edition

*Illustrated in Color*



LIPPINCOTT WILLIAMS & WILKINS

A Wolters Kluwer Company

Philadelphia • Baltimore • New York • London  
Buenos Aires • Hong Kong • Sydney • Tokyo

*Senior Managing Editor:* Maureen Barlow Pugh  
*Managing Editor:* Barbara Werner  
*New Terms Editor:* Thomas W. Filardo, MD  
*Copy Editors:* Peter W. Binns, Linda G. Francis, Raymond Lukens, Bonnie Montgomery  
*Chief On-Line Editor:* Barbara L. Ferretti  
*On-Line Editors:* Kathryn J. Cadle, Dana Workman  
*Proofreaders:* Peter W. Binns; David A. Bloom, MD; Alfred J. Bollet, MD; Ted Burk; Regina Lavette Davis; John A. Day, Jr., MD, FCCP; Richard Diamanti; John H. Dirckx, MD; Thomas W. Filardo, MD; Linda G. Francis; John M. Last, MD, FRACP, FRCPC; Raymond Lukens; Kate Mason, CMT; Joan Sarchese  
*Database Programmers:* Dave Marcus, Lexi-Comp Inc., Hudson, OH  
*Art Director:* Jonathan Dimes  
*Illustrations:* Neil O. Hardy  
*Additional artwork by:* Mary Anna Barratt-Dimes, Kathryn Born, Rob Duckwall, Timothy Hengst, Mikki Senkarik, Michael Schenk, Larry Ward  
*Graphic preparation assistance:* Susan Caldwell, Jennifer Clements, Thomas Dolan, Christina Nihira  
*Design:* Dan Pfisterer

Copyright © 2000 Lippincott Williams & Wilkins  
 351 West Camden Street  
 Baltimore, Maryland 21201-2436 USA



Copyright © by William Wood and Company: 1911, 1st ed.; 1912, 2nd ed.; 1914, 3rd ed.; 1916, 4th ed.; 1918, 5th ed.; 1920, 6th ed.; 1922, 7th ed.; 1924, 8th ed.; 1926, 9th ed.; 1928, 10th ed.; 1930, 11th ed.

Copyright © by Williams & Wilkins: 1933, 12th ed.; 1935, 13th ed.; 1939, 14th ed.; 1942, 15th ed.; 1946, 16th ed.; 1949, 17th ed.; 1953, 18th ed.; 1957, 19th ed.; 1961, 20th ed.; 1966, 21st ed.; 1972, 22nd ed.; 1976, 23rd ed.; 1982, 24th ed.; 1990, 25th ed.; 1995, 26th ed.

All rights reserved. This book is protected by copyright. No part of this book may be reproduced in any form or by any means, including photocopying, or utilized by any information storage and retrieval system without written permission from the copyright owner.

*Stedman's* is a registered trademark of Lippincott Williams & Wilkins.

The publisher is not responsible (as a matter of product liability, negligence or otherwise) for any injury resulting from any material contained herein. This publication contains information relating to general principles of medical care which should not be construed as specific instructions for individual patients. Manufacturers' product information and package inserts should be reviewed for current information, including contraindications, dosages and precautions.

*Database design by Lexi-Comp Inc., Hudson, OH*  
*Printed in the United States of America by World Color, Inc.*

#### Library of Congress Cataloging-in-Publication Data

Stedman, Thomas Lathrop, 1853-1938.  
 Stedman's medical dictionary.—27th ed.  
 p.; cm.  
 ISBN 0-683-40007-X (regular)—ISBN 0-683-40008-8 (deluxe)  
 1. Medicine—Dictionaries. I. Title: Medical dictionary. II. Title.  
 [DNLM: 1. Medicine—Dictionary—English. W 13 S812m 1999]  
 R121 .S8 1999  
 610'.3—dc21

99-056094

00 01 02 03 04 05  
 1 2 3 4 5



# Stedman's Medical Dictionary At A Glance

Stedman's is arranged in main entry/subentry format. Subentries either will be defined entries or will refer you to the preferred term, where the definition appears.

**CELL**

**cell** (sel). 1. The smallest unit of living structure capable of independent existence, composed of a membrane-enclosed mass of protoplasm and containing a nucleus or nucleoid. C.'s are highly variable and specialized in both structure and function, though all must at some stage replicate proteins and nucleic acids, utilize energy, and reproduce themselves. 2. A small closed or partly closed cavity; a compartment or hollow receptacle. 3. A container of glass, ceramic, or other solid material within which chemical reactions generating electricity take place [L. *cella*, a storeroom, a chamber]

**anaplastic c.** (1) a-c. that has reverted to an embryonal state; (2) an undifferentiated c., characteristic of malignant neoplasms.

**acid c.**, SYN *parietal*

**exudation c.**, SYN *exudation corpuscle*

**T helper c.'s**, (Th), a subset of lymphocytes that secrete various cytokines that regulate the immune response: subset 1, which synthesizes gamma interferon and interleukin 2 and are involved in cell-mediated immunity; subset 2, which synthesizes interleukins 4, 5, 10, and are involved in immunoglobulin synthesis.

**cel'lulae ethmoida'les c.**, [TA]; SYN *ethmoid cells*, under *cell*.

**LATIN TERMS—TERMINOLOGIA ANATOMICA**

**ethmoid c.'s** [TA], ethmoidal air cells; evaginations of the mucous membrane of the middle and superior meatuses of the nasal cavity into the ethmoidal labyrinth forming multiple small paranasal sinuses; they are subdivided into anterior, middle and posterior ethmoidal sinuses. SYN *cellulae ethmoidales* [TA], *antra ethmoidalia*, *ethmoidal c.'s*, [TA], *ethmoidal sinuses*, *sinus ethmoidales*, *ethmoid air c.'s*, [TA].

**Terminologia Anatomica**  
Latin term; look for definition under the English synonym

**Blue bars** signal start and finish of High Profile terms

**High Profile Terms**  
Entries with broad significance to the practice of medicine and to world health

**car-ci-no-ma (CA)**, pl. *car-ci-no-mas*, *car-ci-no-ma-ta* (kar-si-nō'mă, -măz, -nō'mă'tă). Any of various types of malignant neoplasm derived from epithelial cells, chiefly glandular (adenocarcinoma) or squamous (squamous cell c.); the most commonly occurring kind of cancer. [G. *karkinos*, fr. *karkinos*, crab, cancer, + -oma, tumor]

**KEY**

- Combining Forms
- Indicates term is illustrated, see Illustration Index, page 000
- SYN Synonym
- Cf. Compare
- [NA] Nomina Anatomica
- [TA] Terminologia Anatomica
- Official alternate Terminologia Anatomica term
- [MIM] Mendelian Inheritance in Man
- C.I. Colour Index
- High Profile term



## WORD FINDER

Having trouble finding a term? This unique dictionary-within-a-dictionary serves as a master cross-reference index of multi-word terms. For additional information see page WF1, immediately preceding the A-Z section.

Use it to find where multi-word terms are defined and as a handy spellchecker for modifiers.

To find the definition for the multi-word terms in bold, look under the organizing term shown in light face.

### To Find

**contact**

### Look Under

allergy; area; catalysis; cheilitis; dermatitis; illumination; inhibition; lens; point; splint; surface

**hereditary sensory radicular**

neuropathy

## GENUS FINDER

*Genus Finder* lists all the genus and species terms defined in Stedman's 27.\*

How can you find the definition of *P. falciparum*, *C. elegans*, *S. aureus*, or *E. coli* when you don't know the genus name? Look in *Genus Finder* under the species name:

**falciparum:** Plasmodium

**elegans:** Cunninghamella

**aureus:** Staphylococcus; Staphylococcus pyogenes

**coli:** Amoeba; Balantidium; Entamoeba; Escherichia

\*Because virus nomenclature does not abbreviate the genus name, viruses are not included in *Genus Finder*.

## BUILDING BLOCKS OF MEDICAL LANGUAGE

The 400 most common medical word parts begin on page xxx in the front of the dictionary. These are prefixes, suffixes, and combining forms that make up 90 to 95 percent of medical vocabulary.

Throughout the A-Z section these terms are marked with the  $\Delta$  symbol.

- $\Delta$  **a-** not, without, -less
- $\Delta$  **ab-** from, away from, off
- $\Delta$  **abs-** from, away from
- $\Delta$  **-ad** toward, in the direction of; -ward
- $\Delta$  **ad-** increase, adherence, motion toward; very
- $\Delta$  **alge-** pain

- $\Delta$  **cardi-** 1 the heart; 2 esophageal opening of stomach
- $\Delta$  **cardio-** 1 the heart; 2 esophageal opening of stomach
- $\Delta$  **cata-** down
- $\Delta$  **cephal-** the head
- $\Delta$  **cephaol-** the head
- $\Delta$  **chem-** chemistry
- $\Delta$  **chemo-** chemistry

- $\Delta$  **cyst-** the bladder; the cystic duct; a cyst
- $\Delta$  **cysti-** the bladder; the cystic duct; a cyst
- $\Delta$  **cysto-** the bladder; the cystic duct; a cyst
- $\Delta$  **cyt-** cell
- $\Delta$  **-cyte** cell
- $\Delta$  **cyto-** cell
- $\Delta$  **dactyl-** the fingers, the toes

Thumb index appears on every page

User's Guide

A

B

C

Word Finder appears on pages WF1-WF122

Genus Finder appears on pages GF1-GF5

Genus Finder

D

E

F

G

H

I

J

K

L

M

Word Finder

Color anatomy images from adam.com with index

Color Inserts

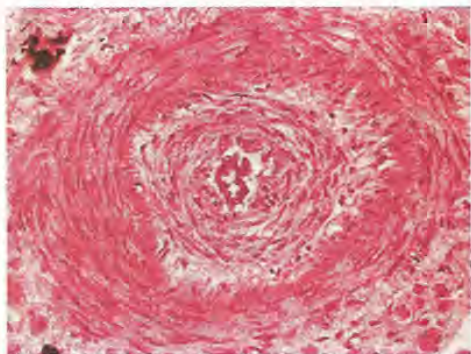
Diagnostic imaging and anatomical positioning

Clinical and microscopic images of diseases and abnormalities

Appendices

Sample of common medical word parts





endangiitis: note narrowing of lumen of vessel by fibrous thickening

**end-ar-te-ri-tis** (en'd-ar-ter-i'tis). Inflammation of the intima of an artery. SYN endoarteritis.

**bacterial e.**, implantation and growth of bacteria with formation of vegetations on the arterial wall, such as may occur in a patent ductus arteriosus or arteriovenous fistula.

**e. defor'mans**, e. with atheromatous patches and calcareous deposits.

**e. oblit'erans, obliterating e.**, an extreme degree of e. proliferans closing the lumen of the artery. SYN arteritis obliterans, obliterating arteritis.

**e. proliferans, proliferating e.**, chronic e. accompanied by a marked increase of fibrous tissue in the intima.

**end-au-ral** (end-aw'räl). Within the ear. [endo- + L. *auris*, ear]

**end-brain**. SYN telencephalon.

**end-brush** (end'brüsh). SYN telodendron.

**end-bulb**. SEE end bulb.

**end-di-a-stol-ic** (en'di-ä-stol'ik). 1. Occurring at the end of diastole, immediately before the next systole, as in end-diastolic pressure. 2. Interrupting the final moments of diastole, barely premature, as in end-diastolic extrasystole.

**endectocide**. A drug effective against both endoparasites and ectoparasites, e.g., the macrolide antibiotic ivermectin. SEE ALSO ivermectin. [endoparasite + ectoparasite + -cide]

**en-de-mia** (en-dē'mē-ä). Obsolete term for an endemic disease.

**en-dem-ic** (en-dem'ik). Denoting a temporal pattern of disease occurrence in a population in which the disease occurs with predictable regularity with only relatively minor fluctuations in its frequency over time. Cf. epidemic, sporadic. SYN enzootic. [G. *endēmos*, native, fr. *en*, in, + *dēmos*, the people]

**en-dem-o-ep-i-dem-ic** (en-dem'ō-ep-i-dem'ik). Denoting a temporary large increase in the number of cases of an endemic disease.

**end-er-gon-ic** (en-der-gon'ik). Referring to a chemical reaction that takes place with absorption of energy from its surroundings (i.e., a positive change in Gibbs free energy). Cf. exergonic. [endo- + G. *ergon*, work]

**en-der-mic, en-der-mat-ic** (en-der'mik, en-der-mat'ik). In or through the skin; denoting a method of treatment, as by inunction; the remedy produces its constitutional effect when absorbed through the skin surface to which it is applied. [G. *en*, in, + *derma* (dermat-), skin]

**en-der-mo-sis** (en-der-mō'sis). Any eruptive disease of the mucous membrane.

**end-feet**. SYN axon terminals, under terminal.

**end-gut**. SYN hindgut.

**end-ing**. 1. A termination or conclusion. 2. A nerve e.

**annulospiral e.**, one of two types of sensory nerve e. associated with a neuromuscular spindle (the other being the flower-spray e.); after entering the muscle spindle, the fiber divides into two flat, ribbonlike branches that wind themselves in rings or spirals about the intrafusal muscle fibers. SYN annulospiral organ.

**calyciform e., caliciform e.**, a synaptic e. in relation to certain neuroepithelial hair cells of the inner ear.

**epilemmal e.**, a nerve e. in close relation to the outer surface of the sarcolemma.

**flower-spray e.**, one of the two types of sensory nerve e. associated with the neuromuscular spindle (the other being the annulospiral e.); in this type, the fiber branches spread out upon the surface of the intrafusal fibers like a spray of flowers. SYN flower-spray organ of Ruffini.

**free nerve e.'s**, a form of peripheral ending of sensory nerve fibers in which the terminal filaments end freely in the tissue. SYN terminations nervorum liberae.

**grape e.'s**, an autodescriptive term applied to synaptic terminals at the ends of short, stalklike axon branches.

**hederiform e.**, a type of free sensory ending in the skin.

**nerve e.**, any one of the specialized terminations of peripheral sensory or motor nerve fibers. SEE motor endplate, corpuscle, bulb.

**sole-plate e.**, SYN motor endplate.

**synaptic e.'s**, SYN axon terminals, under terminal.

**Endo**, Shigeru, Japanese bacteriologist, 1869–1937. SEE E. agar, medium.

**endo-, end-**. Prefixes indicating within, inner, absorbing, or containing. SEE ALSO ento-. [G. *endon*, within]

**en-do-ab-dom-i-nal** (en'dō-ab-dom'i-nāl). Within the abdomen.

**en-do-am-y-lase** (en'dō-am'il-ās). A glucanohydrolase acting on internal glycosidic bonds (e.g.,  $\alpha$ -amylase).

**en-do-an-eu-rys-mo-plas-ty** (en'dō-an-ū-riz'mō-plas-tē). SYN aneurysmoplasty.

**en-do-an-eu-rys-mor-rha-phy** (en'dō-an-ū-riz-mōr'ā-fē). SYN aneurysmoplasty. [endo- + G. *aneurysma*, aneurysm, + *rhaphe*, suture]

**en-do-an-gi-i-tis** (en'dō-an-jē-i'tis). SYN endangiitis.

**en-do-a-or-ti-tis** (en'dō-ā-ōr-i'tis). SYN endoarteritis.

**en-do-ap-pen-di-ci-tis** (en'dō-ä-pen-di-si'tis). Simple catarrhal inflammation, limited more or less strictly to the mucosal surface of the vermiform appendix.

**en-do-ar-te-ri-tis** (en'dō-ar-ter-i'tis). SYN endarteritis.

**en-do-aus-cul-ta-tion** (en'dō-aws-kül-tā'shūn). Auscultation of the thoracic organs, especially the heart, by means of a stethoscopic tube passed into the esophagus or into the heart.

**en-do-bag**. SYN endosac.

**en-do-ba-si-on** (en'dō-bā'sē-on). A cephalometric and craniometric point located in the midline at the most posterior point of the anterior border of the foramen magnum on the contour of the foramen; it is slightly posterior and internal to basion.

**en-do-bi-ot-ic** (en'dō-bī-ōt'ik). Living as a parasite within the host.

**en-do-bron-chi-al** (en'dō-brong'kē-äl). SYN intrabronchial.

**en-do-car-di-ac, en-do-car-di-al** (en'dō-kar'dē-ak, -dē-äl). 1. SYN intracardiac. 2. Relating to the endocardium.

**en-do-car-di-og-ra-phy** (en'dō-kar-dē-ōg'rā-fē). Electrocardiography with the exploring electrode within the chambers of the heart. SEE ALSO intracardiac catheter.

**en-do-car-dit-ic** (en'dō-kar-dit'ik). Relating to endocarditis.

**en-do-car-di-tis** (en'dō-kar-dī'tis). Inflammation of the endocardium. SYN encarditis.

**abacterial thrombotic e.**, SYN nonbacterial thrombotic e.

**acute bacterial e.**, a type of severe bacterial endocarditis caused by pyogenic organisms such as hemolytic streptococci or staphylococci.

**atypical verrucous e.**, SYN Libman-Sacks e.

**bacterial e.**, e. caused by the direct invasion of bacteria and leading to deformity and destruction of the valve leaflets. Two types are acute bacterial endocarditis and subacute bacterial endocarditis.

**cachectic e.**, SYN nonbacterial thrombotic e.

**e. chorda'lis**, e. affecting particularly the chordae tendineae.

**constrictive e.**, thickening of the endocardium due to inflamma-



**proliferative i.**, eruption characterized by dusky erythema and small ulcers due to proliferative changes in capillary bed.

**in-toe** (in'tō). *SYN metatarsus adductus.*

**in-tol-er-ance** (in-tol'er-āns). Abnormal metabolism, excretion, or other disposition of a given substance; term often used to indicate impaired utilization or disposal of dietary constituents.

**hereditary fructose i.** [MIM\*229600], a metabolic error due to deficiency of hepatic fructose 1,6-bisphosphate aldolase B (which also acts on fructose 1-phosphate), which is the second enzyme in the specific fructose pathway. Vomiting and hypoglycemia follow intake of fructose; prolonged fructose ingestion in young children results in failure to thrive, jaundice, hepatomegaly, albuminuria, aminoaciduria, and sometimes cachexia and death; autosomal recessive inheritance caused by mutation in aldolase B gene (ALDOB) on chromosome 9q.

**lactose i.**, a disorder characterized by abdominal cramps and diarrhea after consumption of food containing lactose (e.g., milk, ice cream); believed to reflect a deficiency of intestinal lactase; may appear first in young adults who had tolerated milk well as infants.

**lysine protein i.**, an autosomal recessive disorder characterized by elevated levels of dibasic amino acids (e.g., L-lysine, L-arginine, and L-ornithine) in the urine; apparently due to a defect in dibasic amino acid transport.

**in-tor-sion** (in-tōr'shūn). Conjugate rotation of the upper poles of each cornea inward. [*L. in-torqueo*, pp. *tortus*, to twist]

**in-tor-tor** (in-tōr'tōr). *SYN medial rotator.*

**in-tox-a-tion** (in-tok-sā'shūn). Poisoning, especially by the toxic products of bacteria or poisonous animals, other than alcohol. [see intoxication]

**in-tox-i-cant** (in-tok'si-kant). 1. Having the power to intoxicate. 2. An intoxicating agent, such as alcohol.

**in-tox-i-ca-tion** (in-tok-si-kā'shūn). 1. *SYN poisoning* (2). 2. *SYN acute alcoholism.* [*L. in, in, + G. toxikon*, poison]

**acid i.**, poisoning by acid products (β-oxybutyric acid, diacetic acid, or acetone) formed as a result of faulty metabolism (e.g., uncontrolled diabetes mellitus) or by acids introduced from without; marked by epigastric pain, headache, loss of appetite, constipation, restlessness, and an odor of acetone in the breath, followed by air hunger, coma, and collapse.

**anaphylactic i.**, i. following an anaphylactic reaction.

**citrate i.**, a toxic condition that may develop during massive replacement therapy with transfused blood that contains citrate as an anticoagulant; the citrate combines with calcium ions and may result in tetany.

**intestinal i.**, *SYN autointoxication.*

**septic i.**, *SYN septicemia.*

**water i.**, a metabolic encephalopathy resulting from severe overhydration.

△ **intra-**. Inside, within; opposite of extra-. *SEE ALSO* endo-, ento- [*L. within*]

**in-tra-ab-dom-i-nal** (in'trā-ab-dom'i-nāl). Within the abdomen.

**in-tra-ac-i-nous** (in'trā-as'i-nūs). Within an acinus.

**in-tra-ad-e-noi-dal** (in'trā-ad-ē-noy'dāl). Within the adenoids.

**in-tra-ar-te-ri-al** (in'trā-ar-tēr'ē-āl). Within an artery or the arteries.

**in-tra-ar-tic-u-lar** (in'trā-ar-tik'ū-lār). Within the cavity of a joint. [*intra- + L. articulus*, joint]

**in-tra-a-tri-al** (in'trā-ā-trē-āl). Within one or both of the atria of the heart.

**in-tra-au-ral** (in'trā-aw'rāl). Within the ear. [*intra- + L. auris*, ear]

**in-tra-au-ric-u-lar** (in'trā-aw-rik'ū-lār). Within an auricle (e.g., of the ear).

**in-tra-bron-chi-al** (in'trā-brong'kē-āl). Within the bronchi or bronchial tubes. *SYN endobronchial.*

**in-tra-buc-cal** (in'trā-būk'āl). 1. Within the mouth. 2. Within the substance of the cheek. [*intra- + L. bucca*, cheek]

**in-tra-can-a-lic-u-lar** (in'trā-kan-ā-lik'ū-lār). Within a canaliculus or canaliculi.

**in-tra-cap-su-lar** (in'trā-kap'soo-lār). Within a capsule, especially the capsule of a joint.

**in-tra-car-di-ac** (in'trā-kar'dē-ak). Within one of the chambers of the heart. *SYN* endocardiac (1), endocardial, intracardiac. [*intra- + G. kardia*, heart]

**in-tra-car-pal** (in'trā-kar'pāl). Within the carpus; among the carpal bones.

**in-tra-car-ti-lag-i-nous** (in'trā-kar-ti-laj'i-nūs). Within cartilage or cartilaginous tissue. *SYN* enchondral, endochondral.

**in-tra-cath-e-ter** (in'trā-kath'e-ter). A plastic tube, usually attached to the puncturing needle, inserted into a blood vessel for infusion, injection, or pressure monitoring.

**in-tra-cav-i-tary** (in'trā-cav'i-tār-ē). Within an organ or cavity.

**in-tra-ce-li-al** (in'trā-sē'lē-āl). Within any of the body cavities, especially within one of the ventricles of the brain. [*intra- + L. cella*, koilia, cavity]

**in-tra-cel-lu-lar** (in'trā-sel'ū-lār). Within a cell or cellular space.

**in-tra-cer-e-bel-lar** (in'trā-ser-ē-bel'ār). Within the cerebellum.

**in-tra-ce-re-bral** (in'trā-ser'ē-brāl). Within the cerebrum.

**in-tra-cer-e-bro-ven-tric-u-lar** (in'trā-ser-ē-brō-ven-trik'ū-lār). The locus of administration of drugs or chemicals into the ventricular system of the brain. Often used in animal studies experimentally for the introduction of anti-infectives that do not pass the blood-brain barrier into the brain in humans.

**in-tra-cer-vi-cal** (in'trā-ser'vi-kāl). *SYN* endocervical.

**in-tra-cis-ter-nal** (in'trā-sis-ter'nāl). Within one of the cisternae of the brain. [*intra- + L. cisterna*, reservoir]

**in-tra-co-l-ic** (in'trā-kol'ik). Within the colon.

**in-tra-cor-dal** (in'trā-kōr'dāl). *SYN* intracardiac. [*intra- + L. cor*, heart]

**in-tra-cor-o-nal** (in'trā-kōr'ō-nāl). Within the crown process of a tooth.

**in-tra-cor-po-re-al** (in'trā-kōr-po-rē-āl). 1. Within the corpus. [*intra- + L. corpus*, body] 2. Within any structure anatomically styled a corpus. [*intra- + L. corpus*, body]

**in-tra-cor-pus-cu-lar** (in'trā-kōr-pūs'kū-lār). Within a corpuscle, especially a red blood corpuscle. *SYN* intraglobular (2).

**in-tra-cos-tal** (in'trā-kos'tāl). On the inner surface of the chest wall.

**in-tra-cra-ni-al** (in'trā-krā'nē-āl). Within the skull.

**intracrine** (in'trā-krin). Denoting self-stimulation through the local production of a factor that acts within the cell. [*intra- + L. krinō*, to separate, secrete]

**in-trac-ta-ble** (in'trak'tā-bl). 1. *SYN* refractory (1). 2. Intractable. [*L. in-tractabilis*, fr. *in-* neg. + *tracto*, to draw]

**in-tra-cu-ta-ne-ous** (in'trā-koo-tā'nē-ūs). Within the cutaneous tissue, the skin, particularly the dermis. *SYN* intradermal, intracutaneous. [*intra- + L. cutis*, skin]

**in-tra-cys-tic** (in'trā-sis'tik). Within a cyst or the cavity of a cyst.

**in-trad** (in'trād). Toward the inner part.

**in-tra-der-mal, in-tra-der-mic** (in'trā-der'māl, -der'mik). Within the skin. [*intra- + G. derma*, skin]

**in-tra-duct** (in'trā-dūkt). Within the duct or ducts of a gland.

**in-tra-du-ral** (in'trā-doo'rāl). Within or enclosed by the dura mater.

**in-tra-em-bry-on-ic** (in'trā-em-brē-on'ik). Within the embryo, body, e.g., the portion of the umbilical vein within the embryo, contrast to the portion in the umbilical cord which is extraembryonic. Cf. extraembryonic.

**in-tra-ep-i-der-mal** (in'trā-ep-i-der'māl). Within the epidermis.

**in-tra-ep-i-phys-i-al** (in'trā-ep-i-fiz'ē-āl). Within the epiphysis of a long bone.

**in-tra-ep-i-the-li-al** (in'trā-ep-i-thē'lē-āl). Within the epithelium, epithelial cells.

**in-tra-far-a-di-za-tion** (in'trā-fa-rā-di-zā'shūn). Application of faradic cauterizing current to the inner surface of a hollow organ.



Within a capsule or sheath. **intra-fascic-u-lar** (in'tră-fă-sik'ū-lăr). Within the fasciculi of a structure (e.g., fasciculus intrafascicular).

Within one of the chambers of the heart. **intra-ventric-u-lar** (in'tră-fē'bril, -fēb'rīl). Occurring during the febrile stage of a disease. **intra-pyretic**.

Within the meshes of a network. **intra-mesh** (in'tră-fī'lăr). Lying within the meshes of a network. **intra-filum**, **thread**.

Applied to structures within the muscle. **intra-muscular** (in'tră-fū'săl). Applied to structures within the muscle.

Application of a cauterizing current to the interior of a cavity or organ. **intra-cavitary** (in'tră-gas'trik). Within the stomach.

Within any budlike or bulblike structure, especially a nerve termination within an end bulb. **intra-bulbous** (in'tră-jem'ăl). Within an end bulb.

Within a gene. **intra-genic** (in'tră-jēn'ăl). Within a gene.

Within a gland or glandular structure. **intra-glandular** (in'tră-glan'doo-lăr). Within a gland or glandular structure.

Within a globule in any tissue. **intra-globular** (in'tră-glob'ū-lăr). 1. Within a globule in any tissue. **intra-corporal**.

Within a gyrus or convolution of the brain. **intra-gyral** (in'tră-jī'răl). Within a gyrus or convolution of the brain.

Within the liver. **intra-hepatic** (in'tră-he-pat'ik). Within the liver.

Within the hyoid bone; denoting accessory thyroid glands that lie in the hollow or within the hyoid bone. **intra-hyoid** (in'tră-hī'oyd).

Within the larynx. **intra-laryngeal** (in'tră-lă-rin'jē-ăl). Within the larynx.

Within a ligament, especially the broad ligament of the uterus. **intra-ligamentous** (in'tră-lig-ă-men'tūs).

Within a lobe of any organ or other structure. **intra-lobular** (in'tră-lō'bar). Within a lobe of any organ or other structure.

Within a lobule. **intra-lobular** (in'tră-lob'ū-lăr). Within a lobule.

Within the loculi of any structure. **intra-locular** (in'tră-lok'ū-lăr). Within the loculi of any structure.

1. Within the lumen of a tube. **intra-luminal** (in'tră-loo'mi-năl). **intra-tubal**.

2. Within the bone marrow. **intra-medullary** (in'tră-med'ū-lăr-ē). 1. Within the bone marrow. 2. Within the spinal cord. 3. Within the medulla oblongata.

Within or between the layers of a membrane. **intra-membranous** (in'tră-mem'bră-nūs). 1. Within, or between, the layers of a membrane. 2. Denoting a method of bone formation directly from mesenchymal cells without an intervening stage (occurring, for example, in the calvaria), as distinct from intracartilaginous bone formation.

Within or enclosed by the meninges of the brain or spinal cord. **intra-meningeal** (in'tră-mē-nin'jē-ăl).

Within the meninges. **intra-meningeal** (in'tră-mī-tō-kon'drē-ăl). Within the meninges.

Referring to situations within a molecule. **intra-molecular** (in'tră-mō-lek'ū-lăr).

Within the substance of the wall of a solid or hollow organ. **intra-mural** (in'tră-mū'răl). Within the substance of the wall of a solid or hollow organ. **intra-parietal** (1).

Within the muscle. **intra-muscular** (I.M., i.m.) (in'tră-mūs'kū-lăr). Within the muscle.

Within the myocardium. **intra-myocardial** (in'tră-mī'ō-kar'dē-ăl). Within the myocardium.

Within the muscular wall of the uterus. **intra-myometrial** (in'tră-mī'ō-mē'trē-ăl).

Within the nasal cavity. **intra-nasal** (in'tră-nă'săl).

During or at the time of birth. **intra-partum** (in'tră-nă'tāl). During or at the time of birth. **intra-partum** relating to birth.

Within a nerve. **intra-neural** (in'tră-noo'răl). Within a nerve. **intra-neural** (in'tră-nōo'răl).

Within the nucleus of a cell. **intra-nuclear** (in'tră-nōo'klē-ăr).

Within the eyeball. **intra-ocular** (in'tră-ok'ū-lăr).

Within the mouth. **intra-oral** (in'tră-ō'răl). Within the mouth. **intra-oral** (in'tră-ō'răl).

Within the orbit. **intra-orbital** (in'tră-ōr'bi-tāl).

Within bone. **intra-osseous** (in'tră-os'ē-ūs). Within bone. **intra-osseous** (in'tră-os'ē-ūs).

**intra-os-te-al** (in'tră-os'tē-ăl). **intra-osseous**.

Within the ovary. **intra-o-vari-an** (in'tră-ō-vă'rē-an).

Within the ovum. **intra-ov-u-lar** (in'tră-ov'ū-lăr).

1. **intra-parietal** (in'tră-pă-rē-tāl). 1. **intra-parietal**. 2. Denoting the intraparietal sulcus. **intra-parietal sulcus**.

During labor and delivery or childbirth. Cf. antepartum, postpartum. **intra-partum** (in'tră-par'tūm).

Within the pelvis. **intra-pel-vic** (in'tră-pel'vik).

Within the pericardial cavity. **intra-per-i-car-di-ac**, **intra-per-i-car-di-al** (in'tră-per'ē-kar'dē-ak, -kar'dē-ăl).

Within the peritoneal cavity. **intra-per-i-to-ne-al** (I.P., i.p.) (in'tră-per'i-tō-nē-ăl).

Within the pia mater. **intra-pi-al** (in'tră-pī-ăl).

Within the pleura or the pleural cavity. **intra-pleu-ral** (in'tră-ploo'răl).

Within the pons of the brainstem. **intra-pon-tine** (in'tră-pon'tīn).

Within the prostate gland. **intra-pros-tat-ic** (in'tră-pros-tat'ik).

Within the protoplasm of a cell. **intra-pro-to-plas-mic** (in'tră-prō-tō-plas'mik).

Denoting the psychological dynamics that occur inside the mind without reference to the individual's exchanges with other persons or events. **intra-psy-chic** (in'tră-sī'kik).

Within the lungs. **intra-pul-mo-nary** (in'tră-pul'mo-nār-ē).

**intra-py-ret-ic** (in'tră-pī-ret'ik). **intrafebrile**. **intra-pyretic** (in'tră-pī-ret'ik). **intra-pyretic** (in'tră-pī-ret'ik).

Within the rectum. **intra-rec-tal** (in'tră-rek'tāl).

Within the kidney. **intra-re-nal** (in'tră-rē-nāl). **intra-renal** (in'tră-rē-nāl).

Within the retina. **intra-ret-i-nal** (in'tră-ret'i-nāl).

**intra-rha-chid-i-an**, **intra-ra-chid-i-an** (in'tră-ră-kid'ē-an). **intra-rachidial**. **intra-rachidial** (in'tră-ră-kid'ē-an).

Within the scrotum. **intra-scro-tal** (in'tră-skrō'tāl).

Within the vertebral canal or spinal cord. **intra-spi-nal** (in'tră-spī-nāl).

Within the spleen. **intra-splen-ic** (in'tră-splen'ik).

Within the stroma or foundation substance of any organ or part. **intra-stro-mal** (in'tră-strō'māl).

Within the synovial sac of a joint or a synovial tendon sheath. **intra-syn-ov-i-al** (in'tră-si-nōv'ē-ăl).

Within the tarsus; among the tarsal bones. **intra-tar-sal** (in'tră-tar'sāl).

1. Within a sheath. 2. Within either the subarachnoid or the subdural space. **intra-the-cal** (in'tră-thē-kāl).

Within the cavity of the chest. **intra-tho-rac-ic** (in'tră-thō-ras'ik).

Within the substance of a tonsil. **intra-ton-sil-lar** (in'tră-ton-si-lăr).

Within any tube. **intra-tub-al** (in'tră-too'bāl).

Within any tubule. **intra-tu-bu-lar** (in'tră-too'bū-lăr).

Within the middle ear or tympanic cavity. **intra-tym-pan-ic** (in'tră-tim-pan'ik).

Within the uterus. **intra-u-ter-ine** (in'tră-ū'ter-in).

Within the blood vessels or lymphatics. **intra-vas-cu-lar** (in'tră-vas'kū-lăr).

Within a vein or veins. **intra-ve-nous** (I.V., i.v.) (in'tră-vē-nūs).

Within a ventricle of the brain or heart. **intra-ven-tric-u-lar** (I-V) (in'tră-ven-trik'ū-lăr).

Within a bladder, especially the urinary bladder. **intra-ves-i-cal** (in'tră-ves'i-kāl).

During life. **intra-vi-tam** (in'tră-vī'tām). **intra-vital**.

Within the vitellus yolk. **intra-vi-tel-line** (in'tră-vī-tel'in, -ēn).

Within the vitreous body. **intra-vit-re-ous** (in'tră-vit'rē-ūs).

in



**vas**, gen. *va'sis*, pl. *va-sa*, gen. and pl. *va-so-rum* (vas, *vā'sis*, *vā'sā*, *vā-sō'rūm*) [TA]. A duct or canal conveying any liquid, such as blood, lymph, chyle, or semen. SEE ALSO vessel. [L. a vessel, dish]

**v. aberrans hep'atis**, pl. *va'sa aberran'tia hep'atis*, blind and/or atrophic bile duct remnants in the fibrous appendix and in the capsule of the liver at the margins of the left lobe and the groove for the inferior vena cava.

**v. aberrans of Roth**, an occasional diverticulum of the rete testis or of the efferent ductules of the testis.

**va'sa aberran'tia**, SYN *aberrant ductules*, under *ductule*.

**v. afferens**, pl. *va'sa afferen'tia*, SYN *afferent glomerular arteriole*.

**v. anastomot'icum** [TA], SYN *anastomotic vessel*.

**va'sa bre'via**, SYN *short gastric arteries*, under *artery*.

**v. capill'are** [TA], SYN *capillary* (2); SEE *blood capillary*, *lymph capillary*.

**va'sa chylif'era**, chyle vessels. SEE *lacteal* (2).

**v. collatera'le**, SYN *collateral vessel*.

**v. def'erens**, pl. *va'sa deferen'tia*, SYN *ductus deferens*.

**v. efferens**, pl. *va'sa efferen'tia*, (1) a vein carrying blood away from a part; SYN *efferent lymphatic*, *v. lymphaticum efferens*. (2) SYN *efferent glomerular arteriole*; (3) SYN *efferent ductules of testis*, under *ductule*.

**Ferrein vasa aberrantia**, biliary canaliculi that are not connected with hepatic lobules.

**Haller v. aberrans**, SYN *inferior aberrant ductule*.

**va'sa lymphat'ica**, SYN *lymph vessels*, under *vessel*.

**v. lymphat'icum**, SYN *lymphatic* (3).

**v. lymphat'icum afferens**, SYN *afferent lymphatic*.

**v. lymphat'icum efferens**, SYN *v. efferens* (1).

**v. lymphat'icum profun'dum** [TA], SYN *deep lymph vessel*.

**v. lymphat'icum superficia'le** [TA], SYN *superficial lymph vessel*.

**va'sa nervor'um**, blood vessels supplying nerves.

**va'sa pre'via**, umbilical vessels presenting in advance of the fetal head, usually traversing the membranes and crossing the internal cervical os.

**v. prom'inens duc'tus cochlea'ris**, a blood vessel in the substance of the spiral prominence of the cochlear duct.

**va'sa rec'ta**, straight vessels into which the efferent arteriole of the juxtamedullary glomeruli breaks up; they form a leash of vessels which, arising at the bases of the pyramids, run through the renal medulla toward the apex of each pyramid, then reverse direction in a hairpin turn, and run straight back again toward the base of the pyramid as *venae rectae*.

**vasa recta renis** [TA], arteries penetrating and supplying the renal medulla (pyramids). SYN *arteriolae rectae* [TA], straight arteries.

**va'sa sanguinea aur'is inter'nae** [TA], SYN *vessels of internal ear*, under *vessel*.

**vasa sanguinea choroideae** [TA], SYN *choroid blood vessels*, under *blood vessel*.

**vasa sanguinea intrapulmonalia** [TA], SYN *intrapulmonary blood vessels*, under *blood vessel*.

**va'sa sanguinea ret'inae** [TA], SYN *retinal blood vessels*, under *blood vessel*.

**v. sanguineum** [TA], SYN *blood vessel*.

**v. spira'le**, a blood vessel, larger than its fellows, running in the tympanic layer of the basilar membrane just beneath the tunnel of Corti.

**va'sa vaso'rūm** [TA], small arteries distributed to the outer and middle coats of the larger blood vessels, and their corresponding veins. SYN *vessels of vessels*.

**va'sa vortico'sa**, SYN *vorticose veins*, under *vein*.

△**vas-**. A vas, blood vessel. SEE ALSO *vasculo-*, *vaso-*. [L. *vas*]

**va-sa** (*vā'sā*). Plural of *vas*.

**va-sal** (*vā'sāl*). Relating to a vas or to *vasa*.

**vas-cu-lar** (*vas'kū-lār*). Relating to or containing blood vessels. [L. *vasculum*, a small vessel, dim. of *vas*]

**vas-cu-lar-i-ty** (*vas-kū-lār'i-tē*). The condition of being vascular.

**vas-cu-lar-i-za-tion** (*vas'kū-lār-i-zā'shūn*). The formation of new blood vessels in a part. SYN *arterialization* (3).

**vas-cu-lar-ized** (*vas-kū-lār-īzd*). Rendered vascular by the formation of new vessels.

**vas-cu-la-ture** (*vas'kū-lā-choor*). The vascular network of an organ.

**vas-cu-li-tis** (*vas-kū-lī'tis*). SYN *angiitis*.

**cutaneous v.**, an acute form of *v.* that may affect the skin only, but also may involve other organs, with a polymorphonuclear infiltrate in the walls of and surrounding small (dermal) vessels. Nuclear fragments are formed by karyorrhexis of the neutrophils. SEE ALSO *leukocytoclastic v.* SYN *hypersensitivity v.*

**hypersensitivity v.**, SYN *cutaneous v.*

**hypocomplementemic v.**, SYN *urticarial v.*

**leukocytoclastic v.**, cutaneous acute *v.* characterized clinically by palpable purpura, especially of the legs, and histologically by exudation of the neutrophils and sometimes fibrin around dermal venules, with nuclear dust and extravasation of red cells; may be limited to the skin or involve other tissues as in Henoch-Schönlein purpura. SEE ALSO *cutaneous v.* [G. *leukos*, white, + *kytos*, cell, + *klastos*, broken, fr. *klaō*, to break]

**livedo v.**, hyaline degeneration of the walls of small dermal blood vessels with thrombotic occlusion seen with cryoglobulinemia or in atrophic blanche. No necrosis is seen.

**nodular v.**, chronic or recurrent nodular lesions of subcutaneous tissue, especially of the legs of older women, with lobular panniculitis, granulomatous inflammation with multinucleated giant cells, focal necrosis, and obliterative inflammation of the small blood vessels, resembling erythema induratum but without evidence of associated tuberculosis.

**urticarial v.**, painful, purpuric cutaneous lesions resembling urticaria but lasting more than 24 hours, with biopsy findings of leukocytoclastic *v.* and variable systemic changes, often with hypocomplementemia. SYN *hypocomplementemic v.*

△**vasculo-**. A blood vessel. SEE ALSO *vas-*, *vaso-*. [L. *vasculum*, a small vessel, dim. of *vas*]

**vas-cu-lo-car-di-ac** (*vas'kū-lō-kar'dē-ak*). SYN *cardiovascular*.

**vas-cu-lo-gen-e-sis** (*vas'kū-lō-jen'ē-sis*). Formation of the vascular system. [vasculo- + G. *genesis*, production]

**vas-cu-lo-mo-tor** (*vas'koo-lō-mō'ter*). SYN *vasomotor*.

**vas-cu-lo-my-e-li-nop-a-thy** (*vas'kū-lō-mī-ē-li-nop'ā-thē*). Small cerebral vessel vasculopathy with subsequent perivascular demyelination, presumably due to circulating immune complexes.

**vas-cu-lo-p-a-thy** (*vas-kū-lo-p'ā-thē*). Any disease of the blood vessels. [vasculo- + G. *pathos*, disease]

**vas-cu-lum**, pl. **vas-cu-la** (*vas'kū-lūm*, -lā). A small vessel. [L. dim of *vas*, a vessel]

△**va-sec-to-my** (*va-sek'tō-mē*). Excision of a segment of the *vas deferens*, performed in association with prostatectomy, or to produce sterility. [vas- + G. *ektomē*, excision]

**vas-i-fac-tion** (*vas-i-fak'shūn*). SYN *angiopoiesis*.

**vas-i-fac-tive** (*vas-i-fak'tiv*). SYN *angiopoietic*.

**vas-i-form** (*vas'i-fōrm*). Having the shape of a vas or tubular structure.

**vas-i-tis** (*va-sī'tis*). SYN *deferentitis*.

**v. nodo'sa** (*va-sī'tis nō-dō'sa*), an inflammatory condition of the *vas deferens* characterized by the presence of numerous epithelium-lined spaces with the muscularis and adventitia, often containing spermatozoa; usually seen after vasectomy, and may clinically and microscopically mimic adenocarcinoma. SEE ALSO *vas deferens*.

△**vaso-**. Vas, blood vessel. SEE ALSO *vas-*, *vasculo-*. [L. *vas*, a vessel]

**va-so-ac-tive** (*vā-sō-ak'tiv*, *vas-ō-*). Influencing the tone and caliber of blood vessels.

**va-so-con-stric-tion** (*vā-sō-kon-strīk'shūn*, *vas'ō-*). Narrowing of the blood vessels.

**active v.**, reduced caliber of a vessel caused by increased tone in the smooth muscle in its walls.



testis

#### vasectomy

**passive v.**, reduced luminal pressure.

**va-so-con-stric-tion**, rowing of the blood vessels.

**va-so-con-stric-tion**, causes narrowing of blood vessels.

**2. A nerve, stimulant.**

**va-so-den-tin** (*vā-sō-den-tin*), a substance that causes contraction of the blood vessels.

**va-so-den-tin**, a substance that causes contraction of the blood vessels.

**va-so-de-pres-sion**, a condition in which the blood pressure is lowered.

**va-so-de-pres-sion**, a condition in which the blood pressure is lowered.

**va-so-di-la-tion**, a condition in which the blood vessels are dilated.

**va-so-di-la-tion**, a condition in which the blood vessels are dilated.

**active v.**, a condition in which the blood vessels are dilated.

**passive v.**, a condition in which the blood vessels are constricted.

**va-so-di-la-tive**, a substance that causes dilation of the blood vessels.

**va-so-di-la-tor**, a substance that causes dilation of the blood vessels.

**va-so-di-la-tor**, a substance that causes dilation of the blood vessels.

**va-so-ep-i-did-y-m**, a surgical procedure in which the vas deferens is bypassed.

**va-so-fac-tive**, a substance that causes dilation of the blood vessels.

**va-so-for-ma-tion**, a condition in which the blood vessels are dilated.

**va-so-for-ma-tive**, a substance that causes dilation of the blood vessels.

**va-so-gan-gli-on**, a condition in which the blood vessels are dilated.

**va-sog-ra-phy** (*vā-sō-grā-fī*), a procedure in which the patency of the blood vessels is determined.

**va-so-in-hib-i-tor**, a substance that causes constriction of the blood vessels.