



Table Of Contents

Welcome to Promptu	2
The Voice Remote	4
The Voice Receiver	6
Giving Voice Commands	7.
Overview of Main Screens	11
Main Menu	31
Live TV	14
Program Guide	17
ON DEMAND	23
Mini Guide	30
Settings and Parental Locks	36
Help	45
Programming Your Voice Remote	47
Promptu Voice Commands & Scan Categories	54
Terms and Conditions	59

Welcome To Promptu

Promptu voice control is brought to you by Comcast. Now you can quickly and easily find the programs you want simply by asking.

Promptu works with your existing cable box and it's very easy to set up. If Promptu is not currently installed, please refer to the Quick Start booklet.

New users are also invited to watch the Help Video. This short video introduction answers many common questions about how to get the most from Promptu. To watch the Help Video press the **HELP** button on your remote and select the 'Watch Help Video' on-screen button.

Overview

Promptu voice commands give you instant access to programs and channels and provides powerful but simple to use search commands. Whether you're looking for movies with your favorite actor or upcoming games with your favorite sports team, Promptu voice commands get you the programs you want instantly.

This User's Guide will tell you everything you need to know about using Promptu voice commands in Live TV, the on-screen guide and Comcast ON DEMAND. This booklet will also cover all on-screen guide features including the Mini Guide, Settings, Help and Rental Locks.

If you have any questions regarding the Promptu service, we encourage you to call customer service at 1-888-234-8511.

Welcome To Promptu



Promptu Set-Up

Promptu Set-Up

Promptu is a plug-and-play product. Simply plug the receiver into your cable box, put batteries (included) in the remote and you're ready to control the entire Digital Cable Experience with voice commands. Refer to the Quick Start booklet for more information on setting up the Promptu service.

The Promptu Remote

The Promptu remote control supports both voice commands as well as standard button commands. In fact the buttons on the Promptu remote are virtually the same buttons found on your old remote.

Two unique features have been added for voice control – a microphone located at the top of the remote and the green **TALK** button to activate the microphone. This way, Promptu is only listening when you are giving voice commands.

To learn about giving voice commands, skip ahead to the Voice Commands section of this booklet on page 7.

The Voice Remote



Promptu Voice Remote

Power Control

POWER – In Cable mode turns your cable box on and off. In TV or AUX modes it turns the associated device on and off.

Remote Control Mode

TV – TV mode controls your TV set.*

CABLE – This is the primary mode to control your cable box and the Promptu service. Always make sure that cable mode is selected when using voice commands.

AUX – If you have set up your remote to control a VCR or DVD player, the remote should be in this mode.*

The Promptu TALK Button

TALK – Press and hold to activate microphone and give a voice command.

Promptu Service Buttons

HELP – Press at any time to see the Help menu.

LOCK – Show the Parental Locks screen.

EXIT – Exit any screen and return to watching TV.

INFO – Press to see information about a program.

GUIDE – Show the Program Guide screen.

MENU – Show the Main Menu of services.

Voice Remote

Page List Controls

PAGE ▲ – Show the previous page in a list.

PAGE ▼ – Show the next page in a list.

Highlight Control Buttons

ARROW Keys – Press to move the highlight on a menu.

OK – Press to select a highlighted on screen button, or to show the Info Bar when watching TV.

Volume Controls

VOLUME – Optional control.*

MUTE – Optional control.*

Channel Controls

CHANNEL – Press + or – to change channels.

FAVORITE – Goes to your next Favorite Channel.

LAST – Return to the previous screen or channel.

Letter Controls

A - B - C – Option buttons programmed by your cable operator. Note: These buttons may not do anything.

Playback Controls

◀◀ (DAY) – Press to rewind an ON DEMAND program, or VCR/DVD. In the program guide and mini guide, this will display listings for the previous day.

▶▶ (DAY) – Press to fast-forward an ON DEMAND program, or VCR/DVD. In the program guide and mini guide, this will display listings for the next day.

▶ – Press ▶ to play an On Demand program or control VCR/DVD.

⏸ – Press ⏸ to pause an On Demand program or control VCR/DVD.

● – The record button only works in AUX or TV mode.*

■ – Press to stop an On Demand program or VCR/DVD.

Channel Number Buttons

NUMBER Keys – Use to enter channel numbers, or PIN.

ENTER – Press after a channel has been entered with the number keys.

Source Selection

TV/VCR – Only works in AUX or TV mode.*

* The Promptu Voice Remote is a universal remote control, and can be used to control your TV, VCR, or DVD player in addition to your cable box. See the chapter Programming the Voice Remote for details.

The Voice Receiver



Voice Receiver - Large Connector



Voice Receiver - Small Connector



Voice Receiver - Status Light

Overview

The Voice Receiver gets voice commands from the Voice Remote. The Voice Receiver plugs into your cable box to communicate with the Promptu service. The Voice Receiver has two connectors that plug into your cable box. One is a large square serial connector. The other is a small round IR connector.

Voice Receiver Connections

The Large Connector:

The large square connector plugs into the port labeled DATA on the back of your cable box.

The Small Connector:

The small round connector plugs into the port labeled IR on the back of your cable box.

The Status Light

The Status Light on the back of the Voice Receiver will tell you if it is properly connected to your cable box. The light is always on when the service is working. If the status light is not on, make sure your cable box is on and the small IR connector is securely plugged in. If the status light is blinking make sure the large connector is securely plugged in.

Voice Receiver Placement Tip

For best performance, place the Promptu Receiver on the top, front edge of your cable box. The position of the receiver can affect the accuracy of voice commands. Make sure nothing is blocking the front of the Promptu Receiver, and that it is in clear view. Keep receiver out of direct sunlight to prevent interference with the voice command signal.

Giving Voice Commands



Voice Remote - Front



Voice Remote - Back

The Green TALK Button

When using the Talk button to give voice commands you hold the remote in a different way. Hold the remote upright with the top three to five inches from your mouth. Voice Commands are spoken into the microphone in the top of the Voice Remote.

Holding the Remote

- Hold the Voice Remote where your thumb has easy access to the **TALK** button. Your index finger should naturally fall into the indent on the back.
- Make sure that your fingers are below the IR window on the back. Voice commands will not work if it is blocked
- Always face the Voice Receiver when giving voice commands. Make sure that you have a clear view of the front of the receiver.
- Hold the Voice Remote upright, giving your thumb easy access to the **TALK** button.
- Make sure that your index finger does not block the IR window on the back of the remote.



Voice Remote - Using the **TALK** button

Giving Voice Commands

Using Promptu Voice Commands

One button and voice commands are all you need to unlock the full potential of digital cable.

The green **TALK** button your key to unlocking the full potential of Digital Cable. The Promptu microphone is only on and listening as long the green **TALK** button is pressed.

To give a voice command:

- 1 - Press** and hold the **TALK** button.
- 2 - Say** the command in a normal tone of voice.
- 3 - Release** the **TALK** button.

Voice Commands

Voice commands provide the fastest and easiest way to change channels, navigate the guide, find your favorite programs or sort programs by category. There are a few very simple things to keep in mind.

Follow these tips when using voice commands

- Hold the Voice Remote three to five inches from your mouth while you are giving a command.
- Press and hold the green **TALK** button until you have completely finished your command.
- When giving a command, speak clearly and use a normal tone of voice.
- Make sure there is a clear line of sight between the Promptu Remote and Receiver.

Giving Voice Commands

Scope of Voice Commands

Promptu recognizes tens of thousands of commands but it can't recognize everything you may say. Remember to use the documented voice commands for best results.

The active or available voice commands on any given screen are intuitive and logical but not all commands work on all screens. For example, you can say "**Channel 2**" in the Program Guide or while watching Live TV but not while browsing ON DEMAND programs. Channel numbers simply do not exist as part of the ON DEMAND service.

If you try to use commands not documented here, on the Voice Reference Card or based on program names and providers as seen in the guide screens, Promptu is likely to display a red circle with a question mark in the lower left corner of the screen. (see page 10 for a description of Voice Command Feedback Icons.)

Promptu may also attempt to understand the request but go to a screen or channel that appears to be a random result. This is the result of a voice command that was not understood correctly.

Voice Help and the Help Menu

Voice Help is available on every screen. Simply say "**Voice Help**" and you will see a list of common commands for that screen.

The **HELP** button on the Voice Remote will take you to the main help menu. There you can choose a topic to get more information.

If you are on any screen besides TV you may use the arrow buttons on the Voice Remote to highlight the 'Voice Help' option on-screen. Then press the **OK** button on the remote.

Giving Voice Commands

Voice Command Icons

Promptu displays voice command feedback icons at all times. These icons always appear in the lower left corner of your TV screen and let you know the status of the microphone and your voice commands.

Standby Icon:

The Standby icon is a dot that indicates that the Promptu service is inactive.



Green Listening Icon:

The green icon appears when you press the **TALK** button on the Voice Remote. This indicates that Promptu is listening and ready for your voice command. The green dot will blink as the Promptu service is processing your command.



Green Check Mark Icon:

The Check Mark icon appears when Promptu has understood your command.



Red Question Mark Icon:

The Question Mark icon appears if the service did not understand you. This may also indicate that your command is not available on the current screen. A feedback message will also appear above the icon.



Yellow Exclamation Mark Icon:

The Exclamation Mark icon appears when the system cannot carry out a command. A feedback message will inform you of the reason.



Overview of Main Screens

The Promptu service includes 8 main screens.



Live TV: The Info Bar displays voice command feedback and information about the program currently showing.



Program Guide: The full screen guide lets you browse the complete listing of channels and access ON DEMAND programs.

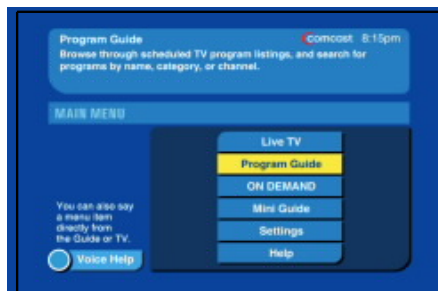


Mini Guide: The Mini Guide allows you to browse programs while still watching TV.

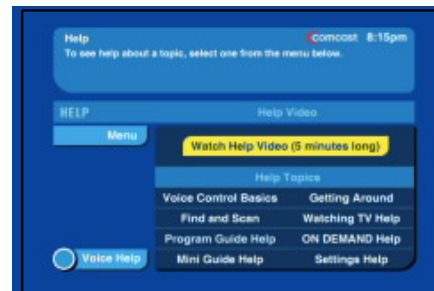


On Demand: This is your gateway to Comcast ON DEMAND. Thousands of free programs and popular movies are available.

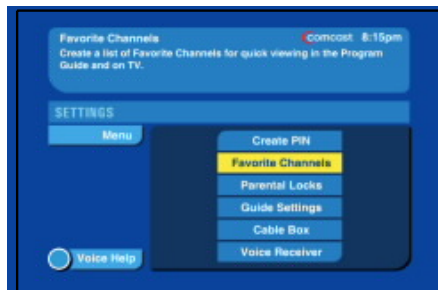
Overview of Main Screens



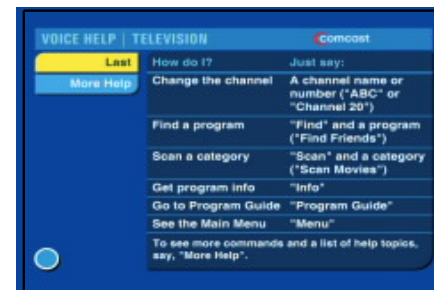
Main Menu: The Main Menu is a navigational hub providing easy access to all the screens listed here.



Help: The Help screen is an index to topics about how to use the service, a link to the Promptu Help Video and more.

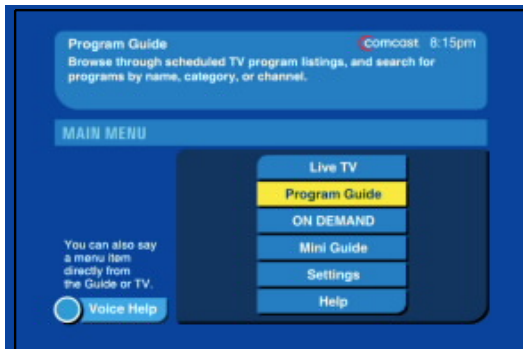


Settings: The Settings screen provides access to Parental Locks, PIN settings, Favorites and cable box preferences.



Voice Help: Voice Help screens are always available. These screens display a list of the most common voice commands available in each of the screens described above.

Main Menu



Main Menu

Overview

The Main Menu shows you all of the screens that are available in the Promptu service.

Voice Command	Action
"Live TV"	Go to Live TV
"Program Guide"	Go to the Program Guide
"Mini Guide"	Show the Mini Guide
"On Demand"	Go to the ON DEMAND Menu
"Main Menu"	Go to the Main Menu
"Settings"	Go to the Settings Screen
"Help"	Go to the Help Screen
"Voice Help"	Show List of Common Commands

Main Menu

To display the Main Menu, just say "**Main Menu**" or press **MENU** on the Promptu Remote.

To go to a screen from the Main Menu, just say its name. For example, say "**Program Guide**" to go to the Program Guide.

You can also select a screen from the Main Menu using the arrow keys and **OK** on the Promptu Remote.

Global Commands

You can also go directly to a screen, without going to the Main Menu first, just by saying its name. These commands will work regardless of the screen you are viewing.

Live TV



*Live TV displays the Info Bar when the **TALK** button is pressed*

Overview

When you are watching TV, Promptu gives you much greater control and flexibility than a standard remote control. In this section, you will learn to use your voice to change channels, find programs by name or category, and scan through channels.

Info Bar

The Info Bar tells you the channel and program you are watching, as well as the current time. The lower line of Info Bar displays tips and important information about the Promptu service.

The Info Bar appears when you change channels, or when you press **OK** or **TALK** on the Promptu remote.

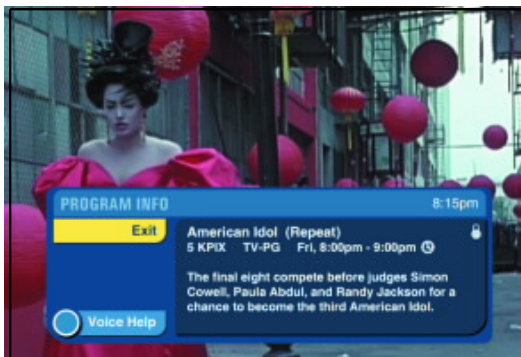
Changing Channels

There are several ways to change channels with Promptu:

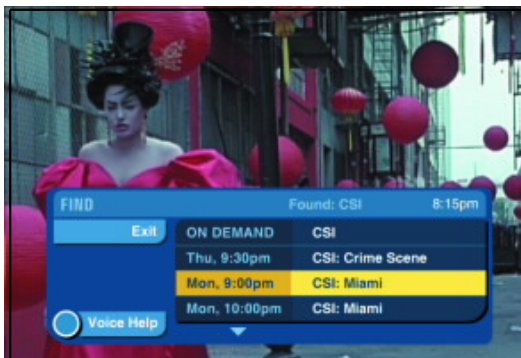
- Say a network name. For example, "**FOX**"
- Say "**Channel**" and a channel number. For example, "**Channel 2**".
- Enter a channel number and press **ENTER** on the Promptu remote.

You can also say "**Last**" or press **LAST** on the remote to flip between 2 channels.

Live TV



Live TV - Program Info



Live TV - Find command

Program Info

While watching TV, say **"Info"** or press **INFO** on the Promptu remote to display Program Info. Program Info shows you detailed information about what you are watching.

Say **"Exit"** or select 'Exit' on the Program Info screen to return to TV.

Finding a Program in Live TV

The Find command allows you to search for a program by its name or by an actor who stars in the program.

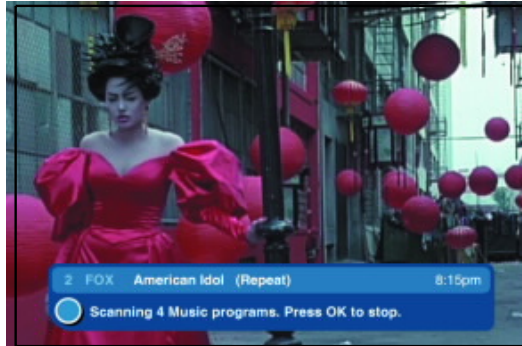
To search for a program by name, just say **"Find"** and the program name. For example, **"Find CSI"**.

To search for a program by actor, just say **"Find"** and the actor name. For example, **"Find Julia Roberts"**.

To search for a sports team, just say **"Find"**, the city where they are located and the name of the team. For example, **"Find Philadelphia Phillies"**.

When you use the Find command while watching TV, the Mini Guide is displayed, showing all of the times that the program is showing over the next seven days. See page 30 for a complete description of how to use the Mini Guide.

Live TV



Live TV - Info Bar Scan

Scan in Live TV

Scan allows you to search for programs by category. During a scan, every channel that is showing a program that matches the category is automatically tuned to until you stop the scan. You can scan over 70 different categories, all of which are listed on the Promptu Voice Reference Card.

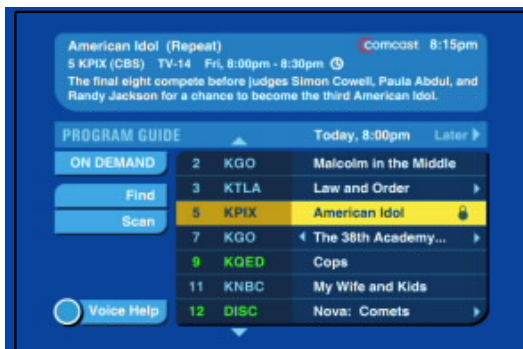
Using scan is easy:

- To start a scan, just say **"Scan"** and a category. For example, **"Scan Music"**.
- To stop a scan, say **"Stop"** or press **OK**.
- To scan through all channels, just say **"Scan"**.

You can also tune to the nearest channel that is showing a program in a category by saying the category alone. For example, saying **"Comedy"** tunes to the closest channel showing a Comedy program.

To see the complete list of categories while watching TV, say **"Scan Categories"**.

Program Guide



Program Guide

Overview

The Program Guide allows you to see every program that is showing on each of the cable channels that you receive. In the Program Guide, you can look ahead at future programs showing in the next seven days, and you can also search for programs by title, actor, category, and channel.

Getting to the Program Guide

To display the Program Guide:

- Say **"Program Guide"** at any time
- Press **GUIDE** on the Promptu remote
- Select 'Program Guide' from the Main Menu
- To exit from the Program Guide, say **"Exit"** or press **EXIT**.

Guide Listings

In the center of the Program Guide are the program listings, and at the top is quick info about what is currently highlighted. There are several ways to search program listings, both with speech and buttons on the remote :

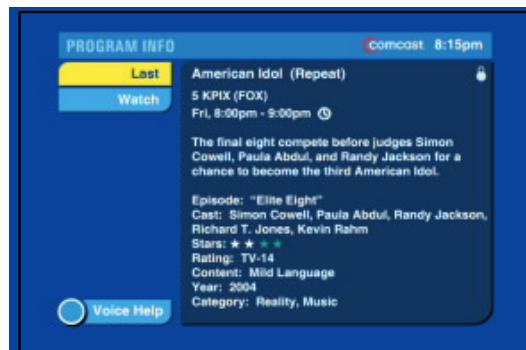
- Say a network name. For example, **"Discovery"**.
- Say **"Channel"** and a channel number. For example, **"Channel 7"**.
- If a program is in the current list, say its name. For example, **"Friends"**.
- Press **▲** or **▼** on the remote to move the highlight through the listings.
- To scroll through the listings, say **"Page Up"** or **"Page Down"**, or press **PAGE ▲** or **PAGE ▼** on the remote.

Once you've highlighted what you want to watch, say **"Watch"** or press **OK**.

On the left side of the Program Guide screen, there are four buttons that allow you to navigate to different screens:

- Selecting **ON DEMAND**, or saying **"ON DEMAND"** takes you to ON DEMAND.
- Selecting 'Scan' or saying **"Scan"** takes you to the Scan Categories screen.
- Selecting 'Find' or saying **"Find"** takes you to the Find instructions screen.
- Selecting 'Voice Help', or saying **"Voice Help"** will show you common voice commands for the screen you're currently on.

Program Guide



Program Guide - Program Info

Program Info

To show Program Info for a highlighted program, say **"Info"** or press **INFO** on the Promptu remote.

To return to the program listings, say **"Last"** or highlight and select 'Last' on the Program Info screen.

When you find a program in the Program Guide that you are interested in, you can get more detailed information about the program on the Program Info screen.

If the program is currently showing on TV, you will see a 'Watch' button on the left side of the Program Info screen. Say **"Watch"** or select 'Watch' to view the program.

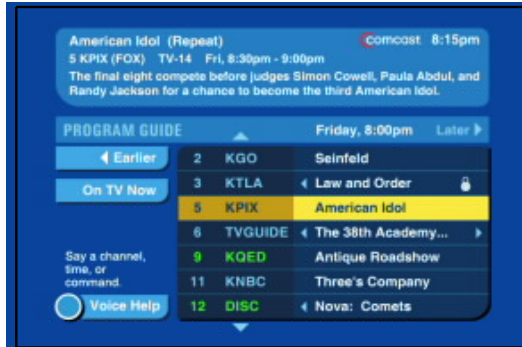
Using Reminders

If the program is showing in the future, you can set a reminder for the program. When set, a reminder will pop up three minutes before the show starts, say **"Yes"**, or select 'Yes' to tune to the channel that is showing the program. Only one reminder may be set for a specific time, but 20 reminders may be set in all.

To set a reminder, say **"Set Reminder"** or select 'Set Reminder' on the left side of the Program Info screen. To clear a reminder, say **"Clear Reminder"** or select 'Clear Reminder'.

You can only set a reminder for a program showing in the future.

Program Guide



Program Guide - Changing guide times

Changing Time in the Listings

The Program Guide allows you to search ahead in the listings for programs that aren't yet showing.

The Program Guide displays the time for the listings you are looking at just above the top-most listing. You can only look at listings for the current time or for future times, but you cannot look at listings for past times.

To see what's on TV at a different time:

- Just say a time, a day, or both. For example, **"8:00PM"**, **"Friday"**, or **"Friday 8:00PM"**.
- Say **"On TV Now"** to return to what's showing on TV now.
- Say **"Today"** to return to today's listings but stay at the time you were previously looking at.

To look ahead to the next ½ hour, you can say **"Later"** or press ► on the Promptu remote.

While looking at listings in the future, you can move to the previous ½ hour by saying **"Earlier"** or selecting the 'Earlier' button on the left side of the Program Guide screen. The 'On TV Now' button returns you to what's showing now.

Program Guide



Program Guide - Find command

The Find Command

You can use the Find command in the Program Guide to search for a program by its name or by an actor who stars in the program.

When you use the Find command in the Program Guide, you will see all of the times that the program is showing in the next seven days.

Finding a Program in the Program Guide

To search for a program by name, just say "**Find**" and the program name. For example, "**Find CSI**".

To search for a program by actor, just say "**Find**" and the actor name. For example, "**Find Julia Roberts**".

To search for a sports team, just say "**Find**", the city where they are located and the name of the team. For example, "**Find Philadelphia Phillies**".

The Find command cannot be used with the Scan categories.

If a program in the list of Find results is showing now, you can watch the program by first highlighting it, and then saying "**Watch**" or pressing **OK** on the remote.

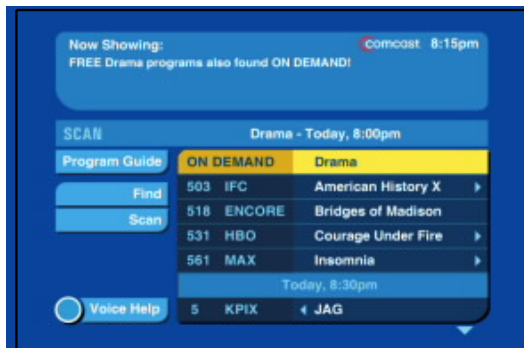
If a program is showing in the future, you can set a reminder for the program by first going to the Program Info screen by saying "**Info**" or pressing **INFO**, and then saying "**Set Reminder**" or selecting the 'Set Reminder' button.

On the top line of the Find results, you may see ON DEMAND and the name of the program. This means that there is a program in ON DEMAND that also matches the program name or actor name that you searched for. Say "**ON DEMAND**" or select this line and press **OK** to see the matching ON DEMAND program.

To return to the program listings from the Find screen, just say "**Program Guide**" or select 'Program Guide' and press **OK**.

If you forget how to use Find, you can say "**Find**" while in the Program Guide or select the 'Find' button on the left side of the Program Guide for instructions.

Program Guide



Program Guide - Scan Categories

The Scan Command

In the Program Guide, Scan allows you to search for programs by category or channel. You can scan through over 70 different categories, as well as all of the cable channels you receive. When you use scan in the Program Guide, you will see the entire list of matching programs that are showing in the next seven days.

Using Scan Categories in the Program Guide

When you scan by category, you will see the list of all of the programs that match the category. The list starts with the current time, and continues with each later time through the next seven days, showing each program that matches the category.

To scan by category in the Program Guide, just say **"Scan"** and a category. For example, **"Scan Drama"**.

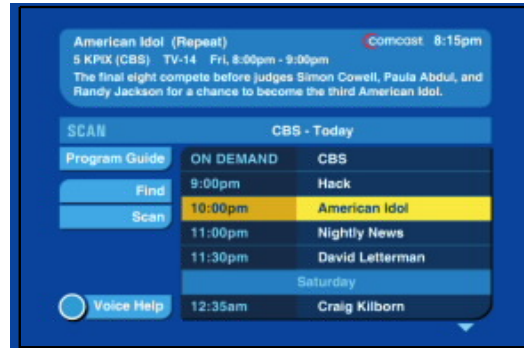
To see all of the categories that are available, say **"Scan Categories"**, or select the Scan button on the left side of the Program Guide. From this screen, just select a category to show the programs that match that category.

If you've set any favorite channels, you can scan those channels by saying **"Scan Favorites"** or selecting 'Favorites' on the Scan Categories screen.

If a program in the list of scan results is showing now, you can watch the program by first highlighting it, and then saying **"Watch"** or pressing **OK** on the remote.

If a program is showing in the future, you can set a reminder for the program on the Program Info screen. First, highlight the program, then say **"Info"** or press **INFO**, and finally say **"Set Reminder"** or select the 'Set Reminder' button.

Program Guide



Program Guide - Scan Channels

Scanning Channels

When you scan by channel, you will see the list of all of the programs that are showing on the channel. The list starts with the current time, and continues with each day through the next seven days.

Using Scan by Channel in the Program Guide

To scan by channel in the Program Guide, just say "**Scan**" and a channel. For example, "**Scan CBS**".

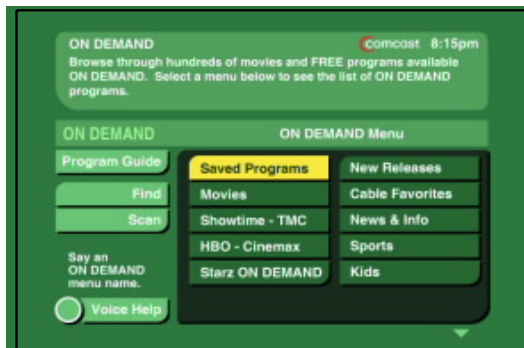
To see all of the channels that are available, say "**Scan Channels**", or select the Scan Channels button on the left side of the Scan Categories screen. From this screen, just select a channel to show the programs that are showing on that channel.

You can navigate through the lists of programs on the Scan Category and Scan Channel screens the same way that you do in the Program Guide:

- Scroll through the listings, by saying "**Page Up**" or "**Page Down**", or pressing **PAGE ▲** or **PAGE ▼**.
- Say a time, a day, or both. For example, "**8:00PM**", "**Friday**", or "**Friday 8:00PM**".
- Say "**On TV Now**" to return to what's showing on TV now.
- Say "**Today**" to return to today's listings but stay at the time you were previously looking at.

To return to the Program Guide, say "**Program Guide**" or select the 'Program Guide' button on the left side of the screen.

ON DEMAND



ON DEMAND - Menus

Overview

In ON DEMAND, you can browse through hundreds of movies and free programs. All the available shows are organized in categories that makes them easy to find. You can still use the Scan and Find commands to make searching for that special program even easier.

Getting Around ON DEMAND

To go to ON DEMAND:

- Say **"ON DEMAND"** at any time
- Select 'ON DEMAND' from the Main Menu

To exit from the ON DEMAND menus, say **"Exit"** or press **EXIT** on the Promptu remote.

On the left side of the ON DEMAND screen, there are 3 buttons that allow you to navigate to different screens:

- Selecting 'Program Guide', or saying **"Program Guide"** takes you to the Program Guide.
- Selecting 'Scan' or saying **"Scan"** takes you to the Scan Categories screen.
- Selecting 'Find' or saying **"Find"** takes you to the Find instructions screen.

Selecting the 'Voice Help' button at the bottom left of the screen, or saying **"Voice Help"** will show you the list of common voice commands for the screen you're currently on. Voice Help will show different commands for different screens.

Navigating ON DEMAND Menus

When you go to ON DEMAND, you will see a list of ON DEMAND menus. To select the menu, just say its name. For example, **"Cable Favorites"**. You can also highlight a menu and press **OK** on the Promptu remote.

When you select a menu, you will see either a list of ON DEMAND programs, or you will see another menu. When you see a list of programs, you can highlight a program and see a brief description about the program at top of the screen.

ON DEMAND



ON DEMAND - Program Listings

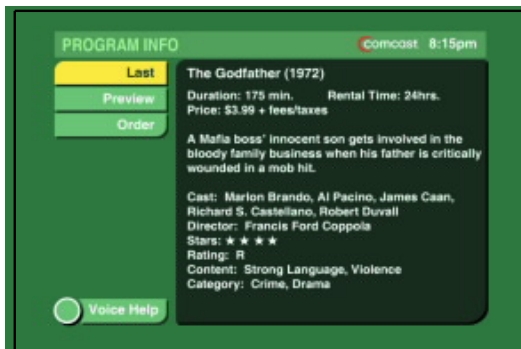
Selecting ON DEMAND Programs

You can navigate through a list of ON DEMAND programs with speech or with the buttons on the Promptu remote:

- To highlight a program in the current list, say its name. For example, **"Spider-Man"**.
- Press **▲** or **▼** on the remote to move the highlight through the listings.
- To scroll through the listings, say **"Page Up"** or **"Page Down"**, or press **PAGE ▲** or **PAGE ▼** on the remote.

Once you've found what you want to watch, just say **"Watch"** or press **OK**. You will then see an information screen that tells you about the program, and allows you to watch the program if it is free, or order the program if it requires payment.

On Demand



ON DEMAND - Program Info

Watching an ON DEMAND Program

When you find an ON DEMAND program that you want to watch, and you select the program with the **"Watch"** command or with the **OK** button, you will see the Program Info screen for that program. The Program Info screen shows you detailed information about the program, and allows you to watch the program if it is free, or order the program if it requires payment.

Watching a Free Program

If a program is free, a 'Watch' button is displayed on the left side of the Program Info screen. To start watching the program, say **"Watch"** or select the 'Watch' button.

To watch an ON DEMAND program from a premium network such as HBO, or Showtime, you must be a subscriber to that premium service. For example, you must subscribe to HBO in order to view HBO ON DEMAND programs.

To return to the ON DEMAND listings, say **"Last"** or select the 'Last' button on the upper left of the Program Info screen.

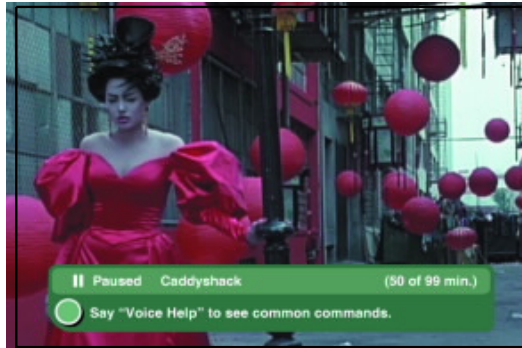
Ordering a Program

If a program requires a payment, an 'Order' button is displayed on the left side of the Program Info screen. To order the program, say **"Order"** or select the on-screen 'Order' button. Promptu will ask to confirm your purchase, say **"Yes"**. If you have set Parental Locks to Lock Purchases, then you will need to enter your PIN. (To find out how to do set Parental Locks see page 40.)

If a preview for the program is available, a 'Preview' button will also be displayed. To watch the preview, say **"Preview"** or select the 'Preview' button.

To return to the ON DEMAND listings, say **"Last"** or select the 'Last' button on the upper left of the Program Info screen.

On Demand



ON DEMAND - Playback



ON DEMAND - Saved Programs

Playback Controls

When you are watching an ON DEMAND program, you can control the playback of the program the same way you control a VCR or DVD player. You can control playback with speech or with the buttons on the Promptu remote:

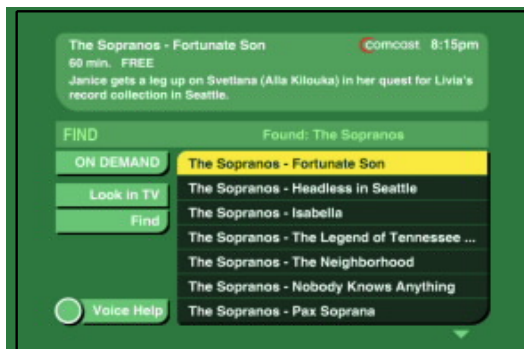
- To pause the program, say **"Pause"** or press **II** on the remote.
- To start playing the program again, say **"Play"** or press **▶** on the remote.
- To rewind the program, say **"Rewind"** or press **◀◀** on the remote.
- To fast-forward, say **"Fast-Forward"** or press **▶▶** on the remote.
- To stop the program, say **"Stop"** or press **■** on the remote.

Saved Programs

When you stop an ON DEMAND program, it is transferred to the Saved Programs screen. You may then return to the program at anytime within the next 24 hours. Most free programs under one hour in length are not saved.

When you select a program from the Saved Program list, the 'Resume' and 'Start Over' buttons are displayed on the left side of the Program Info screen. When you say **"Resume"** or select the 'Resume' button, the ON DEMAND program will resume playing from where you last stopped the program. And, when you say **"Start Over"** or select the 'Start Over' button, the program will start playing from the beginning.

ON DEMAND



ON DEMAND - Find command

The Find Command

You can use the Find command in ON DEMAND to search through the entire ON DEMAND service for a program by its name or by an actor who stars in the program.

Finding an ON DEMAND Program

To search for a program by name, just say **"Find"** and the program name. For example, **"Find Sopranos"**.

To search for a program by actor, just say **"Find"** and the actor name. For example, **"Find Julia Roberts"**.

The Find command cannot be used with the Scan categories.

Watching a Program in the Find List

If you've found a program that you want to watch, just say **"Watch"** or press **OK**. You will then see an information screen that tells you about the program, and allows you to watch the program if it is free, or order the program if it requires payment.

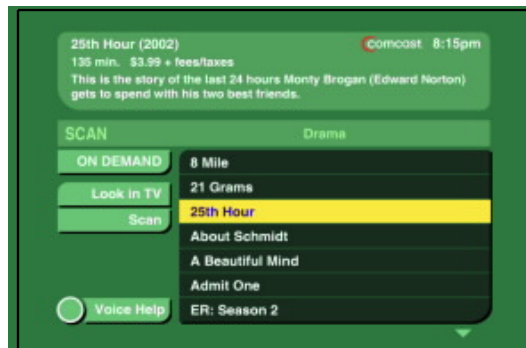
See the previous section, Watching an ON DEMAND Program, for a complete description of how to watch or order an ON DEMAND program.

On the left side of the Find results screen, you will also see the 'Look in TV' button. Saying **"Look in TV"** or selecting the 'Look in TV' button will show TV programs that match the same program name or actor that you searched for, if any are available.

To return to the ON DEMAND menu from the Find screen, just say **"ON DEMAND"** or select the 'ON DEMAND' button and press **OK**.

If you forget how to use Find, you can say **"Find"** while in ON DEMAND or select the 'Find' button on the left side of the ON DEMAND menus to display brief instructions.

ON DEMAND



ON DEMAND - Scan Categories

The Scan Command

In ON DEMAND, Scan allows you to search for programs by category or channel. You can scan through many different categories, as well as all of the cable channels that offer ON DEMAND content.

Using Scan by Category in ON DEMAND

To scan by category in ON DEMAND, just say "**Scan**" and a category. For example, "**Scan Drama**".

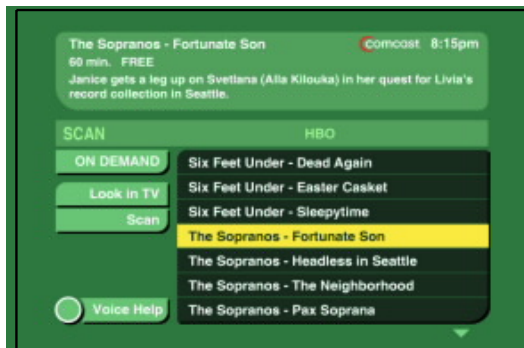
To see all of the categories that are available, say "**Scan Categories**", or select the 'Scan' button on the left side of the ON DEMAND screen. On the Scan Categories screen, just select a category to show the programs that match that category.

If you've found a program that you want to watch, just say "**Watch**" or press **OK**. You will then see an information screen that tells you about the program, and allows you to watch the program if it is free, or order the program if it requires payment.

On the left side of the Scan Category results screen, you will also see the 'Look in TV' button. Saying "**Look in TV**" or selecting the 'Look in TV' button will show TV programs that match the category that you searched for.

See the section *Watching an ON DEMAND Program* on page 25 for a complete description of how to watch or order an ON DEMAND program.

ON DEMAND



ON DEMAND - Scan Channels

Scan by Channels

In ON DEMAND, Scan allows you to search for programs by category or channel. You can scan through many different categories, as well as all of the cable channels that offer ON DEMAND content.

Scan by Channel (Network Name)

To scan by channel in ON DEMAND, just say **"Scan"** and a channel. For example, **"Scan HBO"**.

To see all of the channels that offer ON DEMAND content, say **"Scan Channels"**, or select the 'Scan Channels' button on the left side of the Scan Categories screen. From this screen, you can select a channel to show the programs that are showing on that channel.

Just as with a scan by category, once you've found a program that you want to watch, just say **"Watch"** or press **OK**. Then, from the information screen you can watch or order the program.

And if you want to see what TV programs are showing on the channel you searched for, say **"Look in TV"** or select the 'Look in TV' button.

Mini Guide



Mini Guide

Overview

The Mini Guide allows you to look through the program listings while still watching TV. All of the features and voice commands that are available in the Program Guide can also be used in the Mini Guide.

Getting to the Mini Guide

To display the Mini Guide:

- Say **"Mini Guide"** at any time
- Press ◀, ▶, ▲, or ▼ on the remote
- Select 'Mini Guide' from the Main Menu

To exit from the Mini Guide, say **"Exit"** or press **EXIT** on the remote, or select 'Exit' in the upper left of the Mini Guide.

Navigating the Mini Guide Listings

In the center of the Mini Guide are the program listings.

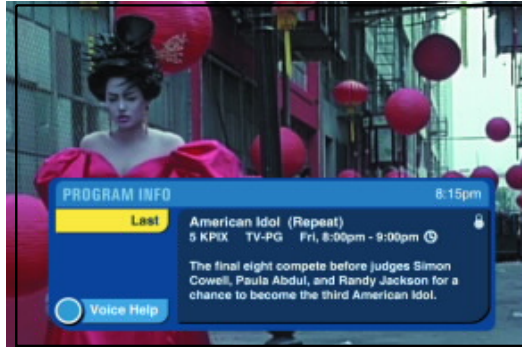
Just as in the Program Guide, you can search through the program listings in the Mini Guide with speech and with the buttons on the Promptu remote:

- Say a network name. For example, **"Discovery"**.
- Say **"Channel"** and a channel number. For example, **"Channel 7"**.
- If a program is in the current list, say its name. For example, **"Friends"**.
- Press ▲ or ▼ on the remote to move the highlight through the listings.
- To scroll through the listings, you can say **"Page Up"** or **"Page Down"**, or press **PAGE ▲** or **PAGE ▼** on the remote.

Once you've found what you want to watch, just say **"Watch"** or press **OK**.

Selecting the 'Voice Help' button at the bottom left of the screen, or saying **"Voice Help"** will show you the list of common voice commands for the screen you're currently on. Voice Help will show different commands for different screens.

Mini Guide



Mini Guide - Program Info

Program Info

When you find a program in the Mini Guide that you are interested in, you can get brief information about the program on the Program Info screen.

To show Program Info for a highlighted program, say **"Info"** or press **INFO** on the Promptu remote.

If the program is currently showing on TV, you can say **"Watch"** to view the program.

To return to the program listings, say **"Last"**, press the **LAST** button on the remote, or highlight and select 'Last' on the Program Info screen.

Using Reminders

If the program is showing in the future, you can set a reminder for the program. When set, a reminder will pop up three minutes before the show starts, say **"Yes"**, or select 'Yes' to tune to the channel that is showing the program. Only one reminder may be set for a specific time, but 20 reminders may be set in all.

To set a reminder, say **"Set Reminder"**. To clear a reminder, say **"Clear Reminder"**. You can only set a reminder for a program showing in the future.

Mini Guide



Mini Guide - Changing guide times

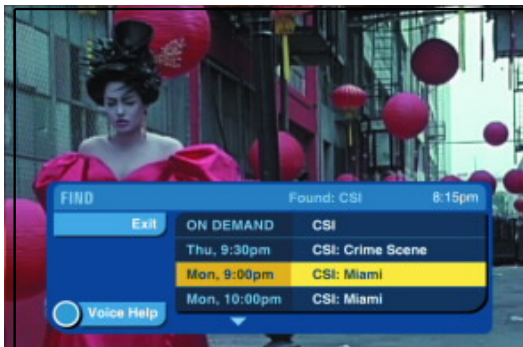
Changing Time in the Listings

The Mini Guide displays the time for the listings you are looking at just above the top-most listing. You can only look at listings for the current time or for future times, but you cannot look at listings for past times.

The Mini Guide uses the same commands to look ahead in the listings as the Program Guide:

- Say a time, a day, or both. For example, "**8:00PM**", "**Friday**", or "**Friday 8:00PM**".
- Say "**On TV Now**" to return to what's showing on TV now.
- Say "**Later**" to look at the next ½ hour.
- Say "**Earlier**" to look at the previous ½ hour.
- Say "**Today**" to return to today's listings but stay at the time you were previously looking at.

Mini Guide



Mini Guide - Find command

The Find Command

You can use the Find command in the Mini Guide to search for a program by its name or by an actor who stars in the program.

When you use the Find command in the Mini Guide, you will see all of the times that the program is showing in the next seven days.

Finding a Program in the Mini Guide

To search for a program by name, just say "**Find**" and the program name. For example, "**Find CSI**".

To search for a program by actor, just say "**Find**" and the actor name. For example, "**Find Julia Roberts**".

To search for a sports team, just say "**Find**", the city where they are located and the name of the team. For example, "**Find Philadelphia Phillies**".

The Find command cannot be used with the Scan categories.

If a program in the list of Find results is showing now, you can watch the program by first highlighting it, and then saying "**Watch**" or pressing **OK** on the remote.

If a program is showing in the future, you can set a reminder for the program on the Program Info screen. Say "**Info**" to display the Program Info screen for the highlighted program, then say "**Set Reminder**".

On the top line of the Find results, you may see ON DEMAND and the name of the program. This means that there is a program in ON DEMAND that also matches the program name or actor name that you searched for. Say "**ON DEMAND**" or select this line and press **OK** to see the matching ON DEMAND program.

To return to the program listings from the Find screen, just say "**Mini Guide**".

If you forget how to use Find, you can say "**Find**" while in the Mini Guide to display brief instructions.

Mini Guide



Mini Guide - Scan Categories

The Scan Command

In the Mini Guide, Scan allows you to search for programs by category or channel. Just like in the Program Guide, you can scan through over 70 different categories, as well as all of the cable channels you receive. When you use scan in the Mini Guide, you will see the entire list of matching programs that are showing in the next seven days.

Using Scan by Category in the Mini Guide

When you scan by category, you will see the list of all of the programs that match the category. The list starts with the current time, and continues with each later time through the next seven days, showing each program that matches the category.

To scan by category in the Mini Guide, just say "**Scan**" and a category. For example, "**Scan Sports**".

To see all of the categories that are available, say "**Scan Categories**". From this screen, just select a category to show the programs that match that category.

If you've set any favorite channels, you can scan those channels by saying "**Scan Favorites**" or selecting 'Favorites' on the Scan Categories screen.

If a program in the list of scan results is showing now, you can watch the program by first highlighting it, and then saying "**Watch**" or pressing **OK** on the remote.

If a program is showing in the future, you can set a reminder for the program on the Program Info screen. Say "**Info**" to display the Program Info screen for the highlighted program, then say "**Set Reminder**".

Mini Guide



Mini Guide - Scan Channels

Scan by Channel

When you scan by channel, you will see the list of all of the programs that are showing on the channel. The list starts with the current time, and continues with each day through the next seven days.

Using Scan by Channel in the Mini Guide

To scan by channel in the Mini Guide, just say "**Scan**" and a channel. For example, "**Scan CBS**".

To see all of the channels that are available, say "**Scan Channels**". From this screen, just select a channel to show the programs that are showing on that channel.

Just as with Scan by Category, you can watch a program that is showing now by saying "**Watch**" or pressing **OK**.

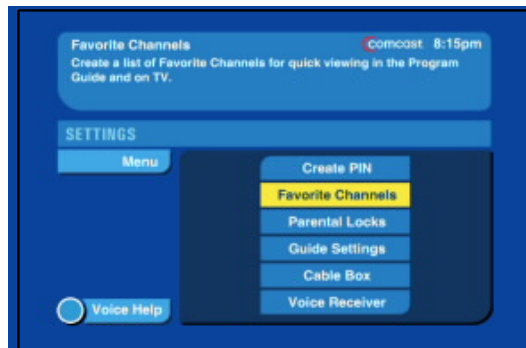
And if a program is showing in the future, you can set a reminder on the Program Info screen by saying "**Set Reminder**".

You can navigate through the lists of programs on the Scan Category and Scan Channel screens the same way that you do in the Mini Guide:

- Scroll through the listings, by saying "**Page Up**" or "**Page Down**", or pressing **PAGE ▲** or **PAGE ▼**.
- Say a time, a day, or both. For example, "**8:00PM**", "**Friday**", or "**Friday 8:00PM**".
- Say "**On TV Now**" to return to what's showing on TV now.
- Say "**Today**" to return to today's listings but stay at the time you were previously looking at.

To return to the Mini Guide, say "**Mini Guide**".

Settings and Parental Locks



Settings

The Settings Menu

This screen allows you to control many Promptu features. Learn about the PIN, Favorite Channels, Parental Locks, Guide settings, your cable box, and the Voice Receiver in the next section.

Getting Around the Settings Menu

To display the Settings menu, just say "**Settings**" at any time, or select 'Settings' from the Main Menu.

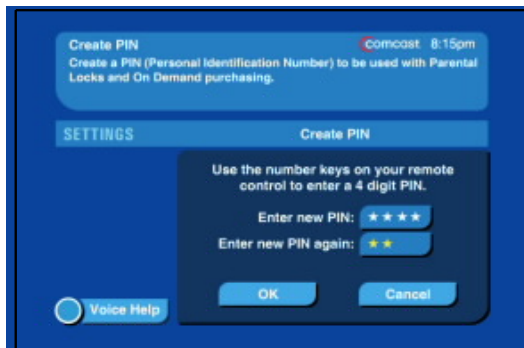
And to exit from Settings, say "**Exit**" or press **EXIT** on the remote, or select 'Exit' in the upper left of the Settings screen.

To go to one of the six settings screen from the Settings menu, just say the name of the screen. For example, say "**Favorite Channels**" to go to the Favorite Channels screen.

You can also select a screen from the Settings menu using the arrow keys and **OK** on the Promptu remote.

The 'Menu' button on the left of the Settings menu screen allows you to return to the Main Menu.

Settings and Parental Locks



Settings - Create PIN

Your Personal Identification Number

A PIN (Personal Identification Number) is required if you want to use the Parental Locks setting to lock programs by rating or restrict ON DEMAND purchases. Your PIN is a four digit number that you enter with the number keys on Promptu remote. After you've created a PIN and set up Parental Locks, Promptu will ask you to enter your PIN to view or purchase a locked program.

Creating a PIN

To create a PIN, first select 'Create PIN' from the Settings menu by saying **"Create PIN"** or by using the arrow keys and **OK** on the Promptu remote.

On the Create PIN screen, enter a four digit number with the number keys on the Promptu remote. You will be asked to enter the number a second time as confirmation.

If both numbers you entered are the same, you will be told that your PIN has been set. To finish creating your PIN, select the 'OK' button on the PIN confirmation screen. You can now go to the Parental Locks screen to set up your parental locks.

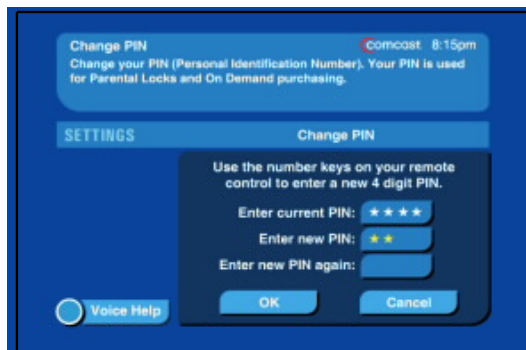
After you have created a PIN, the Create PIN setting is replaced with the Change PIN setting.

To return to the Settings menu, just say **"Settings"** at any time, or select 'Settings' on the left of the screen.

Using Your PIN

Your PIN can only be entered with the number keys on the Promptu remote, and cannot be entered by voice.

Settings and Parental Locks



Settings - Change PIN

Changing Your PIN

Once you have created your PIN, you can still change your PIN to a different number. To change your PIN, select 'Change PIN' from the Settings menu.

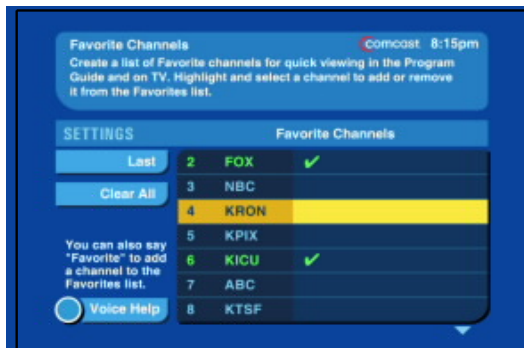
On the Change PIN screen, using the number keys on the Promptu remote, first enter your current PIN. Then enter a new four digit PIN with the Voice Remote number keys. You will be asked to enter the new PIN a second time as confirmation.

If both of the new PIN numbers are the same, you will be told that your PIN has been set. To finish changing your PIN, select the 'OK' button on the PIN confirmation screen. You can use your new PIN with parental locks.

Can't Remember Your PIN?

If you forget your PIN, don't panic! You can just call customer service at 1-888-234-8511 to reset your PIN.

Settings and Parental Locks



Settings - Favorite channels

Favorite Channels

The Favorite Channels feature lets you scan through only the channels you have set up as favorites. Once you have entered your preferred channels on the Favorite Channels setting screen, you can scan through those channels in Live TV and the Program Guide.

Setting Your Favorite Channels

To go to the Favorite Channels setting screen, select it from the Settings menu by saying **"Favorite Channels"** or by using the arrow keys and **OK** on the Promptu remote.

And to exit from Favorite Channels, say **"Exit"** or press **EXIT** on the remote, or select 'Exit' in the upper left of Favorite Channels.

On the Favorite Channels screen you will see all of the cable channels that you receive.

To add a channel to your favorites list, first highlight the channel. You can directly highlight a channel by saying the channel name, such as **"FOX"**. Then, say **"Favorite"** or press **OK** on the remote. When you add a channel to the Favorites list, it will turn green and a green check mark will appear next to it.

To clear a channel from your favorites list, highlight the channel and say **"Favorite"** or press **OK**. The channel will turn white and the check mark will disappear.

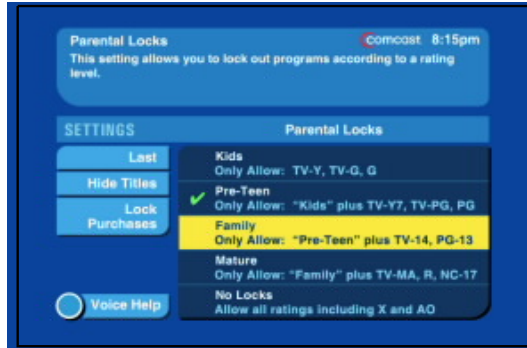
The 'Clear All' button on the left side of the screen clears all of the channels from your favorite list. The 'Last' button returns you to the Settings menu.

Using Favorite Channels

In Live TV the **"Scan Favorites"** command will scan through all of the favorite channels you have set.

In the Program Guide and Mini Guide the **"Scan Favorites"** command will display a list of the programs showing on all your favorite channels.

Settings and Parental Locks



Settings - Parental Locks

Parental Locks

Parental controls let you filter shows by rating, hide program titles and info, and control cable pay-per-view content.

Promptu offers you three ways to protect your family. Choose settings that are appropriate for your household. Your PIN protects all parental controls.

Getting to Parental Locks

The parental controls are set on the Parental Locks screen, go there by pressing the **LOCK** button on the Voice Remote or say, "**Parental Locks**"

You will be asked to enter your Personal Identification Number (PIN) on the Voice Remote number keys. If you do not have a PIN, see *Creating a PIN* on page 37.

Locks

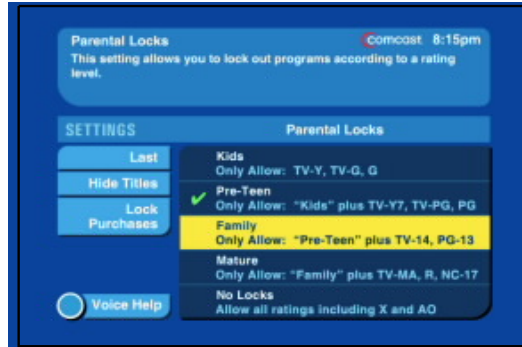
Lock Level – Locks out programs based on the TV and MPAA rating. Highlight the lock level with the Voice Remote Arrow keys and press **OK** on the remote. Or, say the lock level as a voice command. For example say: "**Family**".

Hide Titles / Show Titles– Show or hide program titles and program information. Highlight the on screen button with the Voice Remote Arrow keys and press **OK** on the remote. Or, use the button name as a voice command. For example say: "**Hide Titles**".

Lock Purchases / Unlock Purchases– ON DEMAND programs which require purchase may only be ordered with your PIN. This does not affect free On Demand shows. Highlight the on screen button with the Voice Remote Arrow keys and press **OK** on the remote. Or, use a voice command. For example say: "**Lock Purchases**".

When you select a program or info screen that is locked out you will be prompted to enter your PIN, this will allow you to view locked content without changing your settings. This can include programs that are locked because of the parental lock level, or ON DEMAND programs when Lock Purchases is set.

Settings and Parental Locks



Settings - Parental Locks

Defaults and Un-rated Programs

The default lock level is set to No Locks, which does not restrict any content. This can be changed after you have a PIN.

Note that not all programs on the cable service have ratings. Promptu does not block un-rated programs.

Parental Lock Levels

The Parental Locks screen has five levels that control what programs can be viewed. These restrictions are based on the TV Program Ratings and MPAA movie ratings. By setting a lock you limit viewing to only the allowable programs for that level.

Allowable Programs

Kids: G, TV-G, TV-Y

- These programs are suitable for the youngest audiences. Most shows will require your PIN to view.

Pre-Teen: All above + PG, TV-Y7

- Older children may benefit from these shows. Many programs are blocked.

Family: All above + PG-13, TV-14

- This setting is suitable for teenagers and up. It allows most daytime viewing.

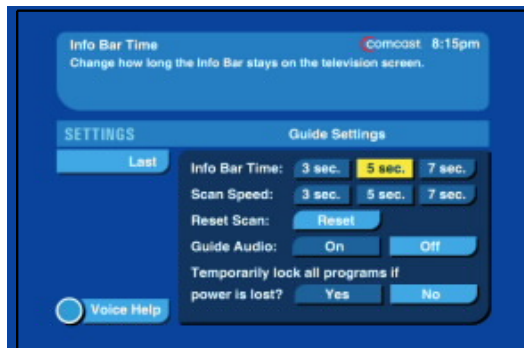
Mature: All above + R, NC-17, TV-MA

- This level allows viewing of most programs including movies with mature themes and popular cable series.

No Locks: No restrictions

- Any program may be viewed. Locks inactive.

Settings and Parental Locks



Settings - Guide Settings

Guide Settings

The Guide settings let you change how various features function in Promptu. This screen has four on-screen choices; Info Bar, Scan Speed, Reset Scan, and Lock all Programs. Additionally there is a 'Last' button on screen to return to Settings.

Using the Guide Settings

To display the Guide Settings, say "**Guide Settings**" on the Settings screen, or select 'Guide Settings' from the Settings menu.

Info Bar settings: 3 seconds / 5 seconds / 7 seconds

From here you can set how long the Info Bar stays visible in live TV.

Scan speed settings: 3 seconds / 5 seconds / 7 seconds

You can change how long you remain on a channel while scanning in live TV.

Reset Scan: Reset

In Live TV the Scan command learns to exclude all unsubscribed channels. Select the 'Reset' on-screen button if you subscribe to a new premium service, so these channels can be included while scanning in Live TV.

Lock all programs: Yes / No

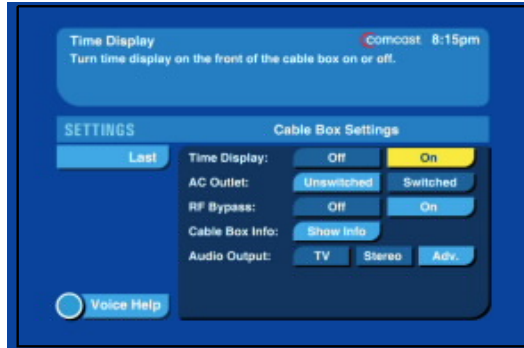
In the unlikely event that power to the cable box is interrupted the Lock All Programs feature will keep all programs locked out until the guide data has been restored, then your Parental Lock settings will be re-applied.

Guide Audio: On / Off

You can mute the TV sound while viewing the Program Guide and ON DEMAND.

Use the Voice Remote arrow keys to highlight the on screen button and press **OK**.

Settings and Parental Locks



Settings - Cable Box Settings

Cable Box Settings

The Cable Box settings let you change how the set-top-box functions. This screen has 5 on screen choices; Time Display, AC Outlet, RF Bypass, Cable Box Info, and Audio Output. Additionally there is a 'Last' button on screen to return to Settings.

Getting Around Cable Box Settings

To display the Cable Box Settings, say "**Cable Box Settings**" on the Settings screen, or select 'Cable Box Settings' from the Settings menu.

Use the Voice Remote arrow keys to highlight the on screen button and press **OK**.

Time Display: Yes / No

The 'Yes' setting shows the time on the cable box LED display. The channel is displayed briefly when changing channels. Select 'No' to always display the channel number on your cable box.

AC Outlet: Unswitched / Switched

The 'Unswitched' setting leaves the power outlet on the back of the cable box on all the time. 'Switched' turns the outlet off and on along with the cable box.

RF Bypass: On / Off

The 'On' setting passes the analog signal through the RF Bypass module. Promptu recommends the On setting.

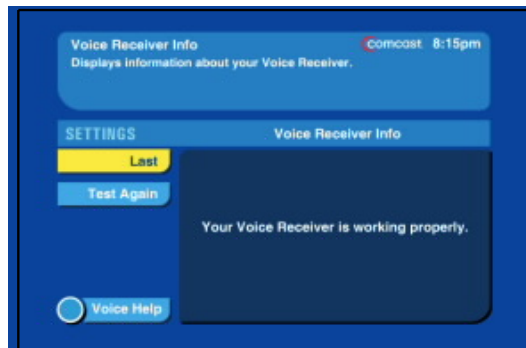
Cable Box Info: Show Info

Selecting the 'Show Info' on-screen button displays the Cable Box Info screen.

Audio Output: TV / Stereo / Advanced

Changes the audio mode. 'TV' is heavy signal compression, stereo sound use this with normal TVs. 'Stereo' is light compression, surround sound, use this with home theater systems. 'Advanced' allows you to change the audio settings individually.

Settings and Parental Locks



Settings - Voice Receiver Information

Voice Receiver Information

The Voice Receiver screen lets you find out if the Promptu Voice Receiver is functioning properly. When you select the Voice Receiver button on the Settings screen the service will perform a diagnostic test to determine if the Voice Receiver is working. This may take several seconds.

Using the Voice Receiver Information Screen

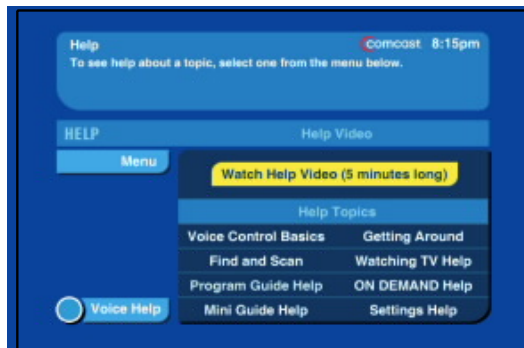
To display the Voice Receiver Information screen, say "**Voice Receiver Information**" on the Settings screen, or select 'Voice Receiver' from the Settings menu.

You will then see a message that tells you if the Voice Receiver is connected.

If you see a message that informs you the receiver is not properly connected. Please check the Voice Receiver connections to the back of the cable box. Once you have done so, use the 'Test Again' button to see if that has solved the problem.

Use the Voice Remote arrow keys to highlight the on screen button and press **OK**.

Help



Help topic menus

The Promptu Help Screen

The Help screen provides a menu of topics to assist you. The Promptu Help menu is divided into eight categories with detailed instructions on how to use the service.

Getting Around the Help Screen

To go to Help:

- Say **"Help"** at any time
- Select 'Help' from the Main Menu
- Press **HELP** on the Voice Remote
- To exit from the Help menus, say **"Exit"** or press **EXIT** on the remote.

To reach a Help topic say the topic name, for example: **"Voice Control Basics"**. Or use the Voice Remote arrow keys move highlight and press **OK**. After choosing a Help topic you will see the first page of help information. There may be several pages in each topic keep reading until you find the answer you are looking for. To change pages in the Help topic say **"Next"** or **"Last"**. Or use **PAGE ▲** or **PAGE ▼** on the Voice Remote.

Help Video

We recommend that all new users watch the Help Video. This short four minute video answers many basic questions. The Help Video is permanently installed on the cable system so you can watch it at any time.

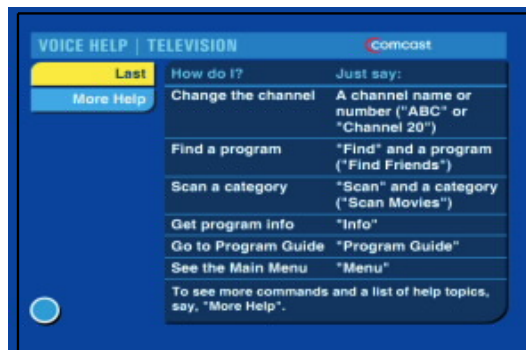
To watch the Help Video from any screen, say:

- 1 - **"Help"** to view the Help screen,
- 2 - **"Watch Help Video"** to highlight the Help Video button, and
- 3 - **"Select"** to start the video.

Or you can use the Voice Remote buttons:

- 1 - Press **HELP** on the Voice Remote to view Help screen.
- 2 - Move highlight with arrow keys to the 'Watch Help Video' button.
- 3 - Press **OK** on the remote to select it.

Help



Voice Help is available for every screen

Voice Help

Do you need help with a voice command? Voice Help lets you see a list of the most useful commands for that screen. You'll see the 'Voice Help' button on the Info Bar and the Guide screens; you can use the feature everywhere, even in live TV. There is a different Voice Help page for each screen so you'll always get the help you need. Use it whenever you need help with voice commands.

Using Voice Help

To view the Voice Help screen say "**Voice help**". Or, if the 'Voice Help' button is on screen highlight it with the arrow keys and press **OK** to select it.

To return to live TV say "**Exit**", or press **EXIT** on the Voice Remote.

To change pages in the Help topic say "**Next**" or "**Last**". Or use **PAGE ▲** or **PAGE ▼** on the Voice Remote. If you need additional instructions say "**More Help**" to move up to the Help menu.

Programming Your Voice Remote



Programming the Promptu Remote

Why Program the Voice Remote?

Optionally, many subscribers may prefer to use the Voice Remote to control their television in addition to their cable box. With only one remote you can turn on both at once. This also allows you to use the Volume and Mute buttons with Live TV.

How To Program the Voice Remote

The Promptu Voice Remote is a universal remote control. It can be used to control your TV, VCR, or DVD player. Built into the Voice Remote are codes for most brands of TVs, VCRs, and DVD players. In order to enable your remote to control these devices, you must first enter the code for the particular brand of the device that you own.

Programming the Voice Remote will only take you a few minutes. You can do it by following these steps:

- 1** Turn on the device you would like to control.
- 2** Locate the device's Manufacturer Code, which can be found in the next section.
- 3** On the Voice Remote, press and hold the appropriate Control Mode key (TV for controlling television sets, AUX for controlling VCRs or DVD players) until the other Mode keys flash on and off twice. This takes about eight seconds.
- 4** Enter the first four digit Manufacturer Code for your device on the Voice Remote number keys. If performed correctly, the Mode key you are using will flash on and off twice.
- 5** Aim the Voice Remote at the device and press POWER once. The device should turn off. If it does not respond, repeat the process, trying each code for your brand device until you find one that works.

Programming Your Voice Remote - TV Manufacturer Codes

A-Mark	0003	Bell & Howell	0154, 0016	Crown	0180, 0039, 0672	Fujitsu	0179, 0683
AOC	0030, 0003, 0019, 0052, 0137, 0185	Blue Sky	1254	Crown Mustang	0672	Funai	0180, 0171, 0179
Abex	0032	Bradford	0180	Curtis Mathes	0047, 0054, 0154, 0451, 0093, 0060, 0030, 0145, 0166, 0016, 0039, 0056, 0466, 0747, 1147, 1347, 0051, 0702	Futuretech	0180
Admiral	0093, 0463	Brockwood	0019			GE	1447, 0047, 0051, 0451, 0178, 0021, 0027, 0029, 0055, 0135, 0174, 0251, 0279, 0282, 0747, 1147, 1347, 0093
Advent	0761, 0783, 0815, 0817, 0842	Broksonic	0236, 0463, 0003				
Adventura	0046	CCE	0217, 0329				
Aiko	0092	CXC	0180	Daewoo	0451, 0019, 0039, 0091, 0092, 0623, 0672	Gibraltar	0017, 0030, 0019
Aiwa	0701	Candle	0030, 0046, 0056, 0186			GoldStar	0030, 0178, 0001, 0002, 0019, 0032, 0106, 0409, 0056
Akai	0030, 0098, 0702, 0672	Carnivale	0030	Daytron	0019		
Alaron	0179, 0183, 0216	Carver	0054	Denon	0145	Gradiente	0053, 0056, 0392
Alfide	0672	Celebrity	0000	Dumont	0017, 0019	Grundig	0672
Ambassador	0177	Celera	0765	Durabrand	0463, 0180, 0178, 0171, 0003, 1034	Grunpy	0180, 0179
America Action	0180	Changhong	0765	Dwin	0720, 0774	Haier	1034
Ampro	0751	Cineral	0451, 0092	Dynatech	0049	Hallmark	0178
Anam	0180, 0004, 0009, 0068	Citizen	0060, 0030, 0039, 0046, 0056, 0092, 0186, 0280	Electroband	0000, 0185	Harley Davidson	0179
Anam National	0055, 0161	Clairtone	0185	Electrohome	0381, 0389, 0409	Harman/Kardon	0054, 0078
Apex Digital	0748, 0765	Clarion	0180	Elektra	0017	Harvard	0180, 0068
Archer	0003	Commercial Solutions	1447, 0047	Emerson	0154, 0236, 0463, 0180, 0178, 0171, 0019, 0038, 0039, 0158, 0177, 0179, 0181, 0182, 0183, 0185, 0270, 0280, 0282, 0623, 0624	Havermy	0093
Audinac	0180	Concerto	0056			Hello Kitty	0451
Audiovox	0451, 0180, 0003, 0092, 0623	Contec	0180, 0157, 0158, 0185			Himitsu	0180, 0628
Baysonic	0180	Craig	0180, 0161			Hisense	0748
Belcor	0019	Crosley	0054	Envision	0030	Hitachi	0145, 0016, 0032, 0038, 0056, 0097, 0151, 0173, 0279, 0409, 0413
				Fisher	0154, 0159		

Programming Your Voice Remote - TV Manufacturer Codes

IRT	0451, 0628	LXI	0047, 0054, 0154, 0156, 0178, 0148, 0747	Mitsubishi	0093, 0150, 0178, 0014, 0019, 0098, 0155, 0331, 0358, 1250	Philco	0054, 0463, 0030, 0145, 0019, 0020, 0028, 0096
Infinity	0054	Logik	0016	Motorola	0093, 0055	Philips	0054
Inteq	0017					Pilot	0030, 0019, 0039
Inteq	0017	Luxman	0056	Multitech	0180, 0049, 0217	Pioneer	0166, 0038, 0679
JBL	0054	M & S	0054	NAD	0156, 0178, 0166	Portland	0019, 0039, 0092
JCB	0000	MEI	0185	NEC	0030, 0019, 0036, 0056, 0497	Prima	0761, 0783, 0815, 0817
JVC	0463, 0053, 0036, 0069, 0160, 0169, 0182	MGA	0150, 0030, 0178, 0019, 0155	NTC	0092	Princeton	0717
Janeil	0046	MTC	0060, 0030, 0019, 0049, 0056, 0091, 0185, 0216	Nikko	0030, 0178, 0092	Prism	0051
Jensen	0761, 0815, 0817			Noblex	0154, 0430	Proscan	1447, 0047, 0747, 1347
KEC	0180	Magnavox	0054, 0030, 0020, 0024, 0028, 0036, 0096, 0179, 0186, 0187, 0230, 0386, 1254	Norcent	0748	Proton	0178, 0003, 0031, 0052, 0466
KMC	0106			Noshi	0018	Pulsar	0017, 0019
KLH	0765			Onwa	0180	Quasar	0250, 0051, 0055, 0165, 0219
KTV	0180, 0030, 0039, 0183, 0185, 0217, 0280			Optimus	0154, 0250, 0166	RCA	1447, 0047, 0060, 0018, 0019, 0029, 0038, 0090, 0135, 0174, 0278, 0679, 0747, 1047, 1147, 1247, 1347, 0093
Kamp	0216			Optoma	0887		
Kawasho	0158, 0216, 0308	Majestic	0015, 0016	Optonica	0093, 0165		
Kaypani	0052	Marantz	0054, 0030	Orion	0236, 0463, 0179		
Kenwood	0030, 0019	Matsushita	0250	Panasonic	0250, 0051, 0055, 0162, 0226, 0338		
Kioto	0054	Megatron	0178, 0145, 0003	Penney	0047, 0156, 0051, 0060, 0030, 0178, 0002, 0003, 0018, 0019, 0021, 0027, 0032, 0039, 0110, 0135, 0149, 0747, 1347, 0056	RadioShack	0047, 0154, 0180, 0030, 0178, 0019, 0032, 0039, 0056, 0165, 0409, 0747
Kloss	0024, 0046, 0078	Memorex	0154, 0463, 0150, 0178, 0016, 0106, 0179, 0056				
Konka	0628, 0632, 0638, 0703, 0707	Mercury	0001				
LG	0030, 0178, 0056, 1178	Midland	0047, 0017, 0051, 0032, 0039, 0135, 0747				
		Minutz	0021				

Programming Your Voice Remote - TV Manufacturer Codes

Realistic	0154, 0180, 0030, 0178, 0019, 0032, 0039, 0056, 0165	Semp	0156	Technics	0250, 0051	Wards	0054, 0030, 0178, 0016, 0019, 0020, 0021, 0027, 0028, 0029, 0056, 0080, 0096, 0111, 0165, 174, 0179
Rhapsody	0183, 0185, 0216	Sharp	0093, 0039, 0153, 0157, 0165, 0281, 0386, 0491,	Technol Ace	0179		
Runco	0017, 0030, 0251, 0497, 0603	Sharp	0688	Technovox	0007		
SSS	0180, 0019	Sheng Chia	0093	Techwood	0051, 0003, 0056		
SVA	0748	Shogun	0019	Teknika	0054, 0180, 0150, 0060, 0016, 0019, 0039, 0056, 0092, 0179, 0186, 0312	Waycon	0156
Sampo	0030, 0032, 0039, 0052, 0110	Signature	0016			White Westinghouse	0463, 0623, 0624
Samsung	0060, 0030, 0178, 0019, 0032, 0056, 0329, 0427, 0482, 0702, 0814	Simpson	0186, 0187			Yamaha	0030, 0019
Samsux	0039	Sony	0000, 0011, 0080, 0111			Zenith	0017, 0463, 0178, 0016, 0092, 0624
Sansei	0451	Soundesign	0180, 0178, 0179, 0186	Telefunken	0056, 0702	Zonda	0003
Sansui	0463	Spectricon	0003, 0137	Tera	0031		
Sanyo	0154, 0146, 0159, 0484	Squareview	0171	Tophouse	0180		
Scimitsu	0019	Starlite	0180	Toshiba	0154, 1256, 0156, 0093, 0060, 0036, 0149		
Scotch	0178	Supre-Macy	0046	Tosonic	0185		
Scott	0236, 0180, 0178, 0019, 0179	Supreme	0000	Totevision	0039		
Sears	0047, 0054, 0154, 0156, 0178, 0171, 0015, 0056, 0146, 0148, 0149, 0159, 0168, 0179, 0281, 0747	Sylvania	0054, 0030, 0171, 0020, 0028, 0065, 0096, 0381	Trical	0157		
Semivox	0180	Symphonic	0180, 0171	Universal	0027		
		TMK	0178, 0056, 0177	Vector Research	0030		
		TNCi	0017	Victor	0053		
		TVS	0463	Video Concepts	0098		
		Tandy	0093	Vidikron	0054, 0242		
		Tatung	0003, 0049, 0055, 0396	Vidtech	0178, 0019, 0036		
				Viking	0046, 0312		

Programming Your Voice Remote - VCR Manufacturer Codes

Admiral	0048, 0209	Cybernex	0240	Harley Davidson	0000	Marantz	0035, 0081
Adventura	0000	Daewoo	0045, 0278, 0020, 0561, 0637	Harman/Kardon	0081, 0038	Marta	0037
Aiko	0278			Harwood	0072, 0068	Matsushita	0035, 0162, 1162, 0454
Aiwa	0037, 0000, 0307			Headquarter	0046	Memorex	0035, 0162, 0037, 0048, 0039, 0047, 0240, 0000, 0104, 0209, 0046, 0307, 0454, 0479, 1037, 1162, 1262
Akai	0041, 0053, 0061, 0106	Denon	0042	Hitachi	0000, 0042, 0041, 0105		
America Action	0278	Durabrand	0039, 0038	Hughes Network Systems	0042		
American High	0035	Dynatech	0000	JVC	0067, 0041, 0008		
Asha	0240	Electrohome	0037	Jensen	0041	Minolta	0042, 0105
Audiovox	0037, 0278	Electrophonic	0037	KEC	0037, 0278	Mitsubishi	0067, 0043, 0061, 0048
Beaumark	0240	Emerex	0032	KLH	0072	Motorola	0035, 0048
Bell & Howell	0104	Emerson	0037, 0184, 0000, 0121, 0043, 0209, 0002, 0278, 0036, 0061, 0068, 0208, 0212, 0295, 0361, 0479, 0561, 0637	Kenwood	0067, 0041, 0038	Multitech	0000, 0072
Broksonic	0184, 0121, 0209, 0002, 0295, 0361, 0479			Kodak	0035, 0037	NAD	0058
CCE	0072, 0278			LG	0037, 1037	NEC	0104, 0067, 0041, 0038, 0040
Calix	0037			LXI	0037	Nikko	0037
Canon	0035			Lloyd's	0000, 0208	Nikon	0034, 0253
Capehart	0020	Fisher	0047, 0104, 0054, 0066	Logik	0072	Noblex	0240
Carver	0081	Fuji	0035, 0033	MEI	0035	Noblex	0240
Cineral	0278	Funai	0000	MGA	0240, 0043, 0061	Olympus	0035
Citizen	0037, 0278	GE	0060, 0035, 0240, 0202, 0760, 0761, 0048	MGN Technology	0240	Optimus	0162, 0037, 0048, 0104, 0058, 0432, 0454, 1048, 1162, 1262
Colt	0072	Garrard	0000	MTC	0240, 0000		
Craig	0037, 0047, 0240, 0072, 0271	Go Video	0432, 0526, 0643	Magnosonic	0278		
Curtis Mathes	0060, 0035, 0162, 0041, 0760	GoldStar	0037, 0038	Magnavox	0035, 0039, 0081, 0000, 0149, 0110, 0563	Optonica	0062
		Gradiente	0000, 0008				
		HI-Q	0047	Magnin	0240		

Programming Your Voice Remote - VCR Manufacturer Codes

Orion	0184, 0209, 0002, 0295, 0479	RCA	0060, 0240, 0042, 0149, 0058, 0077, 0105, 0106, 0202, 0760, 0761, 0035	Sharp	0048, 0062	Videasonic	0240		
Panasonic	0035, 0162, 0077, 0225, 0454, 0616, 1162, 1262, 1362		RadioShack	0000, 1037	Shintom	0072	Villain	0000	
					Shogun	0240	Wards	0060, 0035, 0048, 0047, 0081, 0240, 0000, 0042, 0072, 0149, 0062, 0212, 0760	
Penney	0035, 0037, 0240, 0042, 0038, 0040, 0054	Radix	0037	Singer	0072	White Westinghouse			0209, 0072, 0637, 0278
				Randex	0037				
Pentax	0042, 0105	Realistic	0035, 0037, 0048, 0047, 0000, 0104, 0046, 0062, 0066	Sony	0035, 0032, 0033, 0000, 0034, 0253, 0636, 1032		XR-1000	0035, 0000, 0072	
						Sunpak			0253
Philco	0035, 0209, 0479, 0561	ReplayTV	0614, 0616	Sylvania	0035, 0081, 0000, 0043, 0110	Yamaha			0038
Philips	0035, 0081, 0062, 0110, 0618, 1081, 1181	Ricoh	0034, 0253	Symphonic	0000	Zenith	0039, 0033, 0000, 0209, 0034, 0479, 0637		
		Runco	0039						
Pilot	0037	STS	0042	TMK	0240, 0036, 0208				
Pioneer	0067, 0058	Samsung	0240, 0045, 0053, 0432	Tatung	0041				
Polk Audio	0081	Samtron	0643	Teac	0000, 0041				
Portland	0020			Technics	0035, 0162				
Profitronic	0240	Sanky	0048, 0039	Teknika	0035, 0037, 0000				
Proscan	0060, 0202, 0760, 0761	Sansui	0000, 0067, 0209, 0041, 0271, 0479	Thomas	0000				
		Tivo	0618, 0636						
Protec	0072	Sanyo	0047, 0240, 0104, 0046	Toshiba	0045, 0043, 0066, 0210, 0212				
Pulsar	0039	Scott	0184, 0045, 0121, 0043, 0210, 0212	Totevision	0037, 0240				
Quarter	0046			Unitech	0240				
Quartz	0046	Sears	0035, 0037, 0047, 0000, 0042, 0104, 0046, 0054, 0066, 0105	Vector	0045				
Quasar	0035, 0162, 0077, 0454, 1162			Vector Research	0038, 0040				
				Video Concepts	0045, 0040, 0061				
				Semp	0045			Videomagic	0037

Programming Your Voice Remote - DVD Manufacturer Codes

Aiwa	0641	NAD	0692	Toshiba	0503
Apex Digital	0672	Onkyo	0503, 0627	Urban Concepts	0503
B & K	0655, 0662	Oritron	0651	XBox	0522
Blue Parade	0571	Panasonic	0490, 0632, 0677	Yamaha	0490, 0539, 0545
DVD2000	0521	Philips	0503, 0539	Zenith	0503, 0591
Denon	0490, 0634	Pioneer	0525, 0571, 0632		
Emerson	0591, 0675	Polk Audio	0539		
Enterprise	0591	Princeton	0674		
Fisher	0670	Proscan	0522		
Funai	0675	Qwestar	0651		
GE	0522	RCA	0522, 0571		
Gradiente	0651	Rotel	0623		
Harman/Kardon	0582	Samsung	0490, 0573		
Hitachi	0573, 0664	Sanyo	0670		
Hiteker	0672	Semp	0503		
Integra	0627	Sharp	0630		
JVC	0558, 0623	Sherwood	0633		
Kenwood	0490, 0534, 0682	Shinsonic	0533		
Konka	0711, 0719, 0720, 0721	Sigma Designs	0674		
		Sony	0533		
Koss	0651	Sylvania	0675		
LG	0591	Symphonic	0675		
Magnavox	0503, 0539, 0675	Technics	0490		
Marantz	0539	Techwood	0692		
Microsoft	0522	Theta Digital	0571		
Mitsubishi	0521				

Promptu Voice Commands

LIVE TV

Voice Command	Action
"CNN"	Go to Channel by Name
"Channel 7"	Go to Channel by Number
"Scan Favorites"	Automatically Scans Favorite Channels
"Info"	See Information for Current Program
"Last"	Tune to the Last Channel Viewed

GLOBAL COMMANDS

Voice Command	Action
"Live TV"	Go to Live TV
"Program Guide"	Go to the Program Guide
"Mini Guide"	Show the Mini Guide
"On Demand"	Go to the ON DEMAND Menu
"Main Menu"	Go to the Main Menu
"Settings"	Go to the Settings Screen
"Parental Locks"	Go to Parental Lock Settings
"Help"	Go to the Help Screen
"Voice Help"	Show a List of Voice Commands

Promptu Voice Commands

FIND AND SCAN

Voice Command	Action
"Find Law & Order"	Show Programs Matching Request
"Find Actor George Clooney"	Show Programs with Requested Actor
"Find The Philadelphia Flyers"	Show Programs with Requested Team
"Scan Movies" <i>(see all scan categories on page 58)</i>	Live TV: Automatically Scan by Category
	Guide: Show All Programs in Category
"Stop"	Stop a Scan in Live TV
"Cooking"	Go to Next Program in Requested Category
"Help"	Go to the Help Screen
"Voice Help"	Show a List of Common Voice Commands

Promptu Voice Commands

PROGRAM GUIDE & MINI GUIDE

Voice Command	Action
"CBS"	Select Channel by Name
"Channel 2"	Select Channel by Number
"Watch"	Watch or Get Info on Selected Program
"The Simpsons"	Select Title in Listing
"Info"	See Information for Selected Program
"Friday 8:00 PM"	Go to Requested Time
"Earlier"	Go to Previous 1/2 Hour
"Later"	Go to Next 1/2 Hour
"On TV Now"	Go to Current Time
"Page Up"	See Previous Page
"Page Down"	See Next Page
"Exit"	Go to Live TV

PROGRAM GUIDE & MINI GUIDE

Voice Command	Action
"Watch ESPN"	Go to Channel by Name
"Watch Channel 12"	Go to Channel by Number
"Watch Friends"	Tune to Channel by Program Name
"Info Friends"	See Information by Program Name

Promptu Voice Commands

ON DEMAND

Voice Command	Action
"On Demand"	Go to Main ON DEMAND Menu
"Cable Favorites"	Go to Selected ON DEMAND Menu
"Watch"	See Program Info and Viewing Options
"Page up"	See the Previous Page of Listings
"Page down"	See the Next Page of Listings

ON DEMAND PLAYBACK

Voice Command	Action
"Play"	Play ON DEMAND Program
"Stop"	Stop ON DEMAND Playback
"Pause"	Pause ON DEMAND Playback
"Fast Forward"	Fast forward ON DEMAND Program
"Rewind"	Rewind ON DEMAND Program

Promptu Scan Categories

Action	Crime	Home Improvement	Reality	Tennis
Adult Programming	Documentary	Horror	Religious	Technology
Adventure	Drama	House And Garden	Romance	Track And Field
Animals	Educational	How To	Rodeo	Travel
Animated	Extreme Sports	Hunting	Science	Watersports
Arts And Crafts	Fashion	Kids	Science Fiction	Westerns
Auto	Favorites	Medical	Shopping	Wrestling
Auto Racing	Figure Skating	Motorsports	Sitcoms	
Baseball	Fishing	Movies	Skating	
Basketball	Football	Music	Skiing	
Bicycle	Game Shows	Mystery	Snowsports	
Biography	Gay And Lesbian	Nature	Soap Operas	
Business	Golf	News	Soccer	
Cartoons	Gymnastics	Olympics	Spanish	
Cheerleading	Health And Fitness	Outdoors	Specials	
Collectibles	History	Paranormal	Sports	
Comedies	Hockey	Performing Arts	Suspense	
Cooking	Holiday	Politics	Talk Shows	

Terms and Conditions

FCC Approval

This equipment has been tested and found to comply with the limits for a class B digital device, pursuant to part 15 of the FCC Rules. These limits are designed to provide a reasonable protection against harmful interference in a residential installation. This equipment generates, uses, and can radiate radio frequency energy and if not installed and used in accordance with the instructions, may cause harmful interference to radio communications. However, there is no guarantee that interference will not occur in a particular installation. If this equipment does cause harmful interference to radio or television reception, which can be determined by turning the equipment off and on, the user is encouraged to try to correct the interference by one or more of the following measures:

- Reorient or relocate the receiving antenna.
- Increase the separation between the equipment and receiver.
- Connect the equipment into an outlet or a circuit different from that to which the receiver is connected.
- Consult the dealer or an experienced radio/TV technician for help.

Terms and Conditions

© 2004 AgileTV Corporation

