

EXHIBIT

Blasters-1007

[54] APPARATUS AND METHOD FOR
RECEIVING, DRAINING AND DISPOSING
OF DREDGED MATERIAL

[75] Inventor: Albert H. Sloan, Ft. Lauderdale, Fla.

[73] Assignee: Subaqueous Services, Inc., Ft.
Lauderdale, Fla.

[21] Appl. No.: 346,951

[22] Filed: May 3, 1989

[51] Int. Cl.⁵ B01D 21/28[52] U.S. Cl. 210/800; 137/140;
137/546; 210/241; 210/248; 210/519; 298/23
TT; 298/27[58] Field of Search 37/58, 63, 67; 210/171,
210/241, 248, 283, 320, 514, 519, 532.1, 513,
803, 800; 298/23 MD, 25, 23 TT, 27; 296/56,
194; 405/33; 137/123, 132, 140, 546

[56] References Cited

U.S. PATENT DOCUMENTS

2,010,538	8/1935	Evans	210/514
2,055,954	9/1936	Tokheim	137/140
3,800,949	4/1974	Duval	210/241
3,894,397	7/1975	Fair	405/33
3,917,084	11/1975	Swisher et al.	298/27
4,366,058	12/1982	Wolde-Michael	210/320
4,377,475	3/1983	Wiedemann	210/241
4,411,779	10/1983	McConnell	210/283
4,426,020	1/1984	Presseau et al.	137/546
4,436,622	3/1984	Petretti	210/241
4,680,879	7/1987	Hill et al.	37/67
4,807,373	2/1989	Sloan et al.	37/63
4,816,167	3/1989	Vanderslice	210/241
4,854,058	8/1989	Sloan et al.	37/58
4,929,353	5/1990	Harris	210/241

FOREIGN PATENT DOCUMENTS

2126155 2/1971 France 210/320
265252 10/1932 Italy 210/241

Primary Examiner—Richard V. Fisher

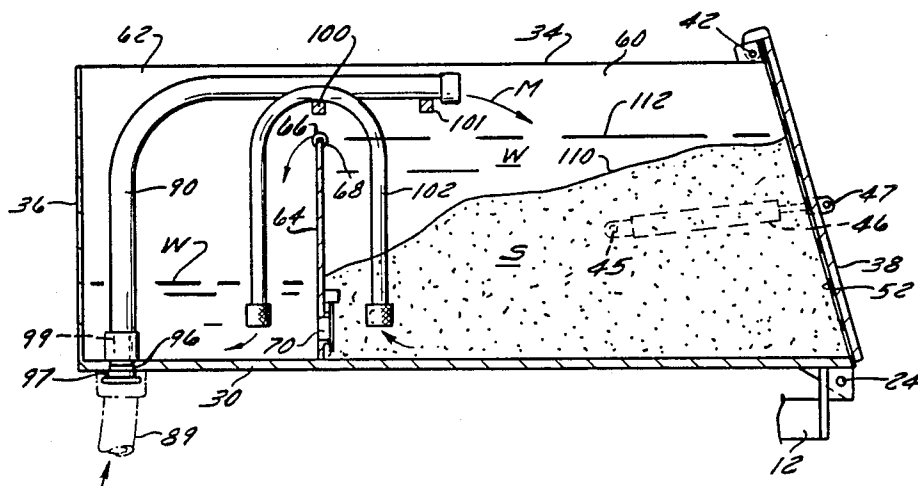
Assistant Examiner—Joseph Drodge

Attorney, Agent, or Firm—Nilles & Nilles

[57] ABSTRACT

A dump truck has a tiltable dump body with a tailgate at its rear end. A partition or weir mounted in the dump body and of lesser height than the walls of the dump body divides the dump body into front and rear compartments. A siphon is connected between the two compartments and extends over the partition. The rear compartment, having a discharge opening at its rear end which is closed by a tailgate, receives dredged material in the form of a mixture of water and sand (or silt) pumped thereto through a supply conduit on the dump body. As the rear compartment is being filled with dredged material, gravity causes the sand (silt) to settle at the bottom and the water to rise to the top and spill over the partition into the front compartment. Some water also flows through the siphon into the front compartment. The mixture is directed by the supply conduit so that the mound formed by sand settling out is initially higher near the rear end of the rear compartment to leave a clear area for water accumulation near the front end of the rear compartment. However, the mound forms progressively nearer the front end of the rear compartment. When the rear compartment is filled, a drain port is opened to discharge water accumulated in the front compartment. The relatively dry sand (silt) is then transported to a disposal site whereat it is dumped when the tailgate is opened and the dump body is tilted.

18 Claims, 4 Drawing Sheets



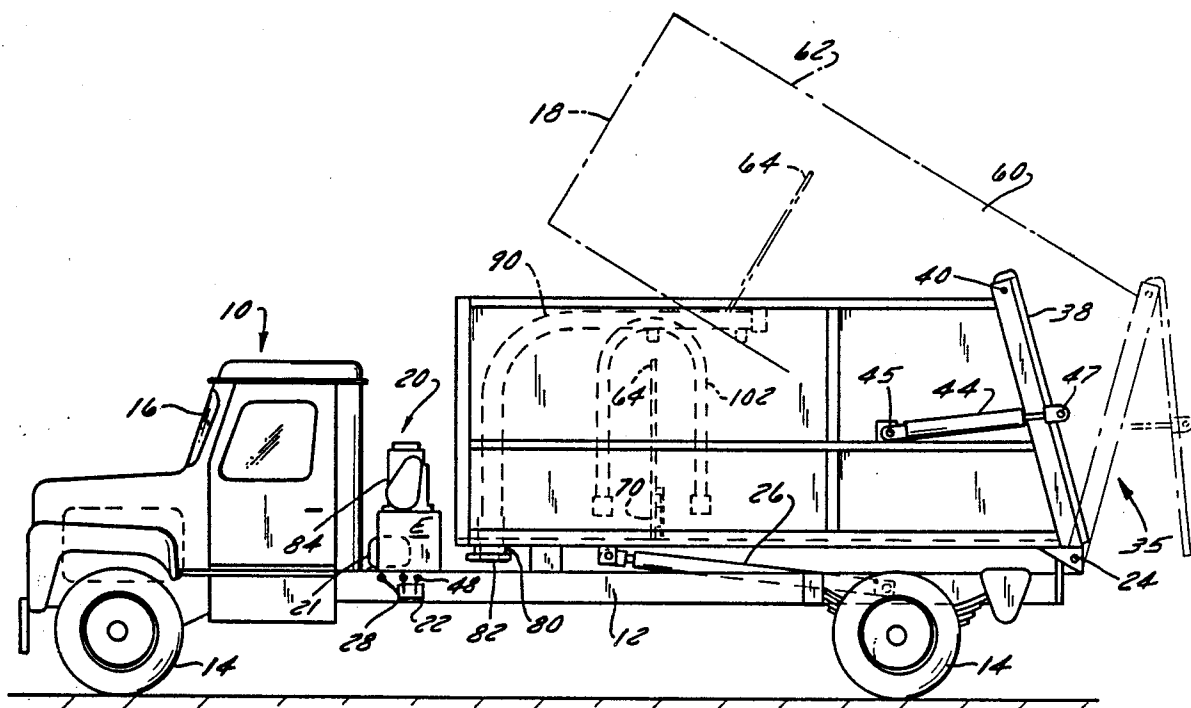


FIG. 1

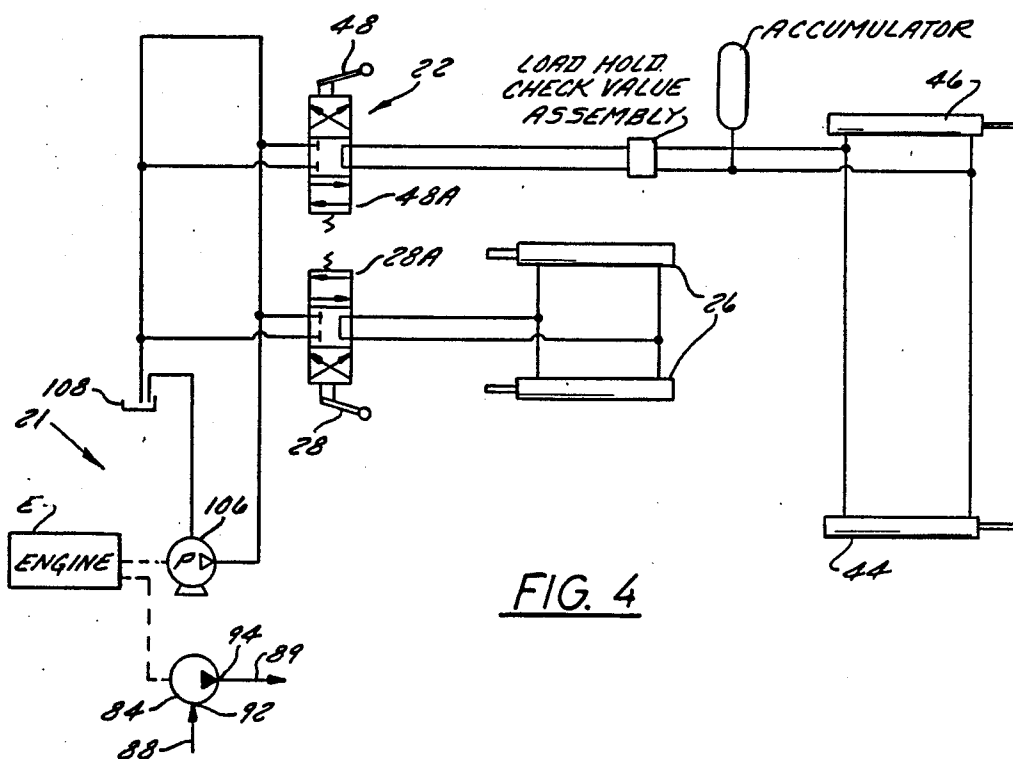
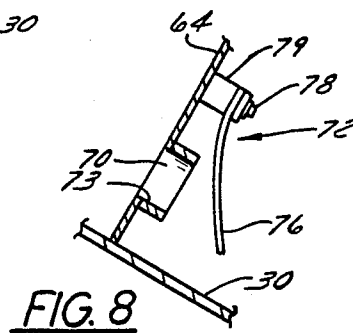
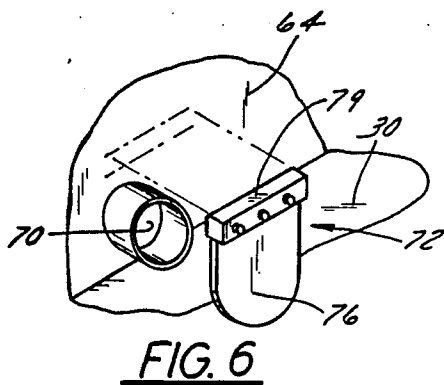
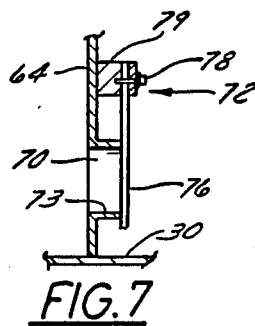
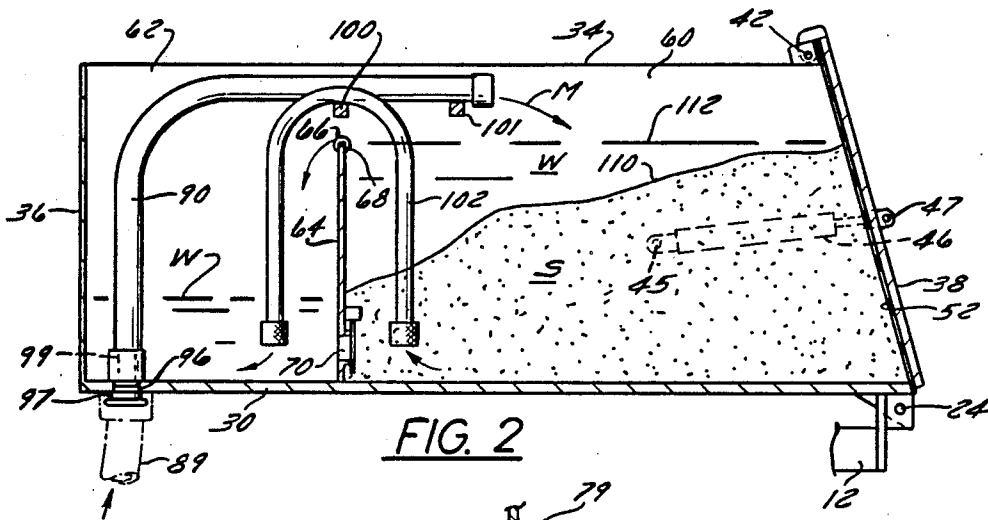
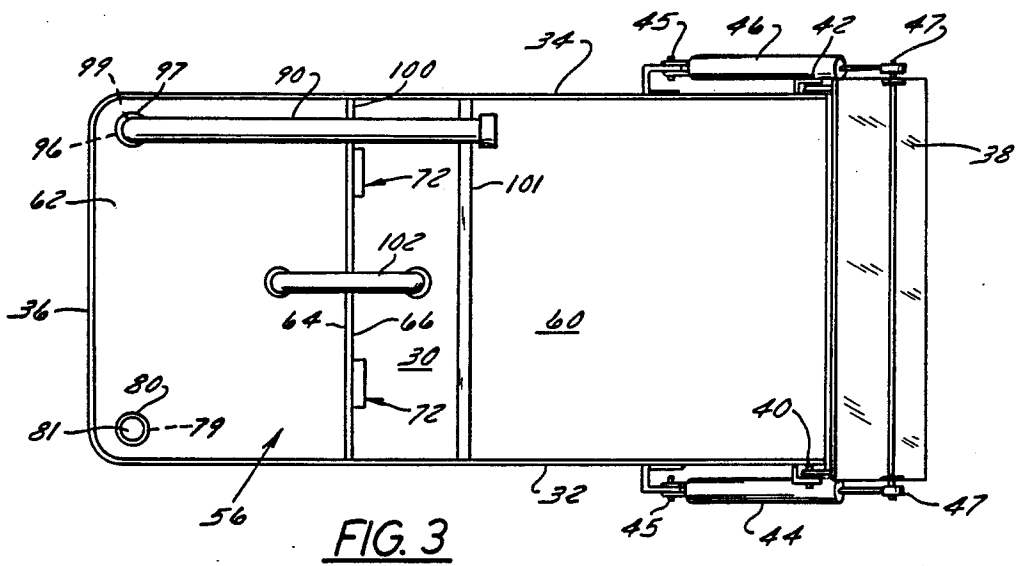
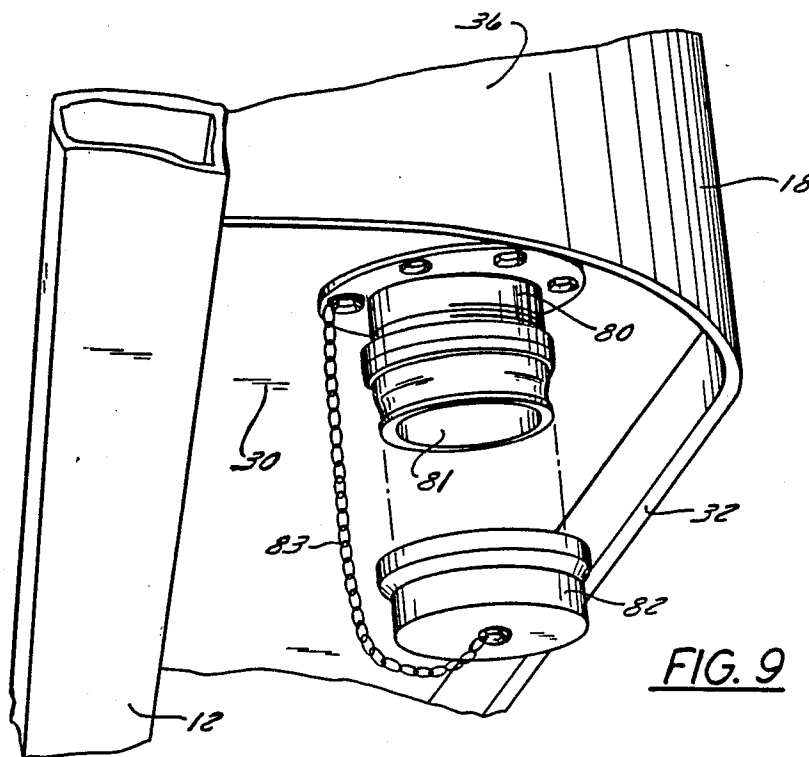
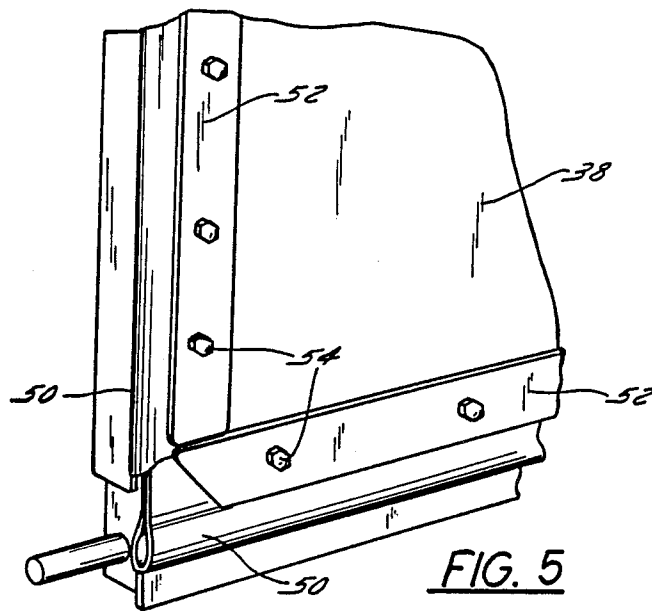


FIG. 4





APPARATUS AND METHOD FOR RECEIVING, DRAINING AND DISPOSING OF DREDGED MATERIAL

BACKGROUND OF THE INVENTION

Field of Use

This invention relates generally to apparatus and method for receiving, draining and disposing of dredged material comprising a mixture of water and sand or silt pumped from an underwater dredging site.

In particular, the apparatus comprises a mobile container which is divided into two compartments by a partition wall or weir and wherein water rising and separating from dredged material pumped into one compartment by a dredged material supply means flows over the weir into the other compartment from which it is then drained and the relatively dry sand or silt remaining in the said one compartment is then transported to a disposal site and removed from the mobile container. The method pertains to the manner of filling the said one compartment to facilitate separation of water from the dredged material.

DESCRIPTION OF THE PRIOR ART

In some underwater dredging operations carried out to clear navigation channels of sand or silt or to remove unwanted build-up near beaches, breakwaters or docksides, dredged material is pumped through a hose from a submerged dredge head into dump trucks on a nearby shore for transport to and disposal at some remote location. Transport of dredged material comprising a mixture of water and sand or silt is uneconomical and it is desirable to separate and dispose of the water before transport.

My co-pending U.S. patent application Ser. No. 208,474, filed June 20, 1988 issued Aug. 8, 1989 as U.S. Pat. No. 4,854,058, and entitled "Dredging Apparatus Having a Diver-Operated Hand-Held Dredge Head for Quasi-Closed Loop System" discloses a dump truck having a conventional dump body containing a large removable filter unit containing a water pump, which unit is temporarily placed within the dump body prior to pumping dredged material into the dump body. After the dredged material pumped into the dump body has been drained of water by means of the pump-operated filter unit, the filter unit is physically removed from the dump body by means of a crane and the dump truck is then driven to some remote location whereat the substantially dry solid particulate matter is dumped from the truck. The foregoing arrangement enables the same pump-operated filter unit to be used in each successive dump truck arriving at the loading site. However, emplacement and removal of the filter unit for each truck requires a crane and involves expenditure of time, labor and money.

SUMMARY OF THE PRESENT INVENTION

The present invention pertains to mobile apparatus for receiving, draining and disposing of dredged material and to a method for using such apparatus. The mobile apparatus comprises a vehicle, such as a truck or trailer; a container mounted on the vehicle; a partition wall or weir mounted in the container and dividing it into two compartments, one compartment for receiving dredged material in the form of a mixture of liquid (water) and particulate solid matter (sand and/or silt), and the other compartment for receiving water separated

from the mixture in said one compartment and overflowing the weir into said other compartment; means for supplying said dredged material to said one compartment; means, including a drain port on the container, selectively operable to drain water collected in said other compartment; and means for effecting removal of the relatively dry solid particulate matter from said one compartment.

In the preferred embodiments the mobile apparatus further comprises siphon means connected between the two compartments for effecting water flow from the bottom of the mixture in said one compartment into said other compartment.

In the preferred embodiments the container takes the form of a dump body and said one compartment is a rear compartment located at the rear end of the dump body and said other compartment is a relatively smaller front compartment located at the front end of the dump body. The means for effecting removal of the relatively dry solid particulate matter from said one compartment thereof comprises: means for pivotally mounting the container on the vehicle; means for selectively moving the container between a generally horizontal loading position and a tilted position wherein the relatively dry solid particulate flows or slides toward the rear wall of the rear compartment; a discharge opening in the rear wall of the rear compartment for discharge of the drained, relatively dry particulate matter; a tailgate movably mounted on the rear wall; sealing means for the tailgate; and means for moving the tailgate between a closed, sealed position relative to the discharge opening while the container is in horizontal loading position and the rear compartment is being loaded with dredged material and an open position relative to said discharge opening when the container is moved to tilted position.

In the preferred embodiments the partition wall or weir is provided near its lower edge with one or more sluice holes which communicate between the two compartments and each sluice hole is provided with a gravity-operated flapper valve which closes the sluice hole when the container is in loading position and opens the sluice hole when the container is in tilted position to thereby allow a small amount of residual water in the front compartment to drain therethrough across the floor of the rear compartment to facilitate sliding and discharge of the relatively dry particulate matter through the discharge opening.

However, in its broadest aspect, applicant's invention is also applicable to a dump body which tilts sideways and in which the discharge opening and its movable gate are located on a lateral wall of said one compartment. The invention is also applicable to a non-tiltable body in which the discharge opening is located in the floor of the said one compartment which receives the dredged material and the gate therefor moves downwardly to open position, in which case the sluice holes in the partition wall and associated flapper valves are unnecessary.

In one embodiment of the apparatus the means for supplying dredged material to the said one compartment comprises a supply conduit in the form of a flexible supply hose which is aimed toward that end of said one compartment most remote from the partition wall or weir so as to fill that end with sand first and facilitate water separation.

In another embodiment of the apparatus the means for supplying dredged material to the said one compartment

ment comprises a supply conduit in the form of a rigid supply pipe disposed lengthwise of and above said other compartment and having a series of spaced apart supply holes along the bottom thereof. The supply pipe is fed with dredged material from the end thereof most remote from the partition wall or weir so that the end of the said one compartment most remote from the partition wall or weir fills up first and the rising level of sand progressively blocks the supply holes to thereby control the manner in which said one compartment is filled to facilitate water separation.

The method in accordance with the invention for processing dredged material comprising a mixture of water and particulate solid material comprises the steps of: providing a container having a partition wall therein dividing it into two compartments, one compartment being adapted to receive the mixture therein and the other compartment being adapted to receive water separated from the mixture in the one compartment as the particulate solid material settles to the bottom of the said one compartment and the water rises and overflows the partition wall into the other compartment; directing the mixture into the one compartment so that the solid material settling out therein forms a mound which is higher in a region remote from the partition wall than in another region closer to the partition wall; and continuing to direct the mixture into the one compartment so that the water level in the said other region rises high enough to overflow the partition wall. Preferably, the method comprises the further steps of initially directing the mixture into the one compartment at a location remote from the partition wall and subsequently directing the mixture into the one compartment at other locations progressively closer to the partition wall. The method also includes the steps of removing water accumulated in the other compartment and removing particulate solid material from the one compartment, as by tilting the container.

The apparatus and method in accordance with the present invention offer several advantages over the prior art. For example, the apparatus is self-contained and does not require the filter unit (with pump therein) as disclosed in my patent application Ser. No. 208,474 or equipment for installing and removing the same, thereby saving time, labor and money. The partition member or weir, with or without sluice holes and flapper valves therefor, is easily and economically installed in a conventional, commercially available dump truck body, as are the sealing means for the tailgate thereof and the means for operating the tailgate. The dredged material supply means directs such material to a specific location and in a specific manner so as to facilitate separation of the liquid and the solid particulate matter. Other objects and advantages of the invention will hereafter appear.

BRIEF DESCRIPTION OF THE DRAWINGS

FIG. 1 is a side elevation view of a dump truck in accordance with one embodiment of the present invention;

FIG. 2 is an enlarged side elevation schematic view of the dump body of the dump truck of FIG. 1 with portions broken away to expose interior details;

FIG. 3 is a top plan schematic view of the dump body shown in FIG. 2;

FIG. 4 is a schematic diagram of the hydraulic control circuit for operable components shown in FIGS. 1, 2 and 3;

FIG. 5 is an enlarged perspective view of the inner surface of the tailgate showing sealing means thereon;

FIG. 6 is an enlarged perspective view of a flapper valve for a port in a partition wall shown in FIGS. 2 and 3;

FIG. 7 is a vertical cross-section view of the flapper valve of FIG. 6 showing it in closed position when the dump body is in a horizontal loading position;

FIG. 8 is a view similar to FIG. 7 showing the flapper valve in open position when the dump body is in tilted position;

FIG. 9 is an enlarged perspective exterior view of a water drain port for a front compartment in the dump body of FIGS. 2 and 3;

FIG. 10 is a side elevation view of a dump body of a dump truck in accordance with another embodiment of the invention and showing another type of means for supplying dredged material to the dump body; and

FIG. 11 is a top plan view of the dump body and means shown in FIG. 10.

DESCRIPTION OF PREFERRED EMBODIMENTS

General Arrangement of First Embodiment

FIG. 1 shows a first preferred embodiment of mobile apparatus in accordance with the invention and comprising a vehicle, such as a dump truck 10, having a chassis 12 on which are mounted ground-engaging wheels 14, an operator's cab 16, a tiltable dump body 18, a motor-driven pump mechanism 20, a hydraulic power supply mechanism 21 and an operator's hydraulic control valve assembly 22.

Dump body 18 is pivotally mounted on chassis 12 by pivot means 24 which enables the body to be moved between its lowered, generally horizontal loading and transport position (shown in solid lines in FIG. 1) and its raised, tilted unloading or dumping position (shown in dashed lines in FIG. 1) by means of a pair of large extendable/retractable hydraulic cylinders 26 pivotally connected between chassis 12 and dump body 18 in response to the operator's manipulation of a hydraulic control lever 28 in hydraulic control valve assembly 22, as FIG. 4 shows.

As FIGS. 1, 2 and 3 show, dump body 18, which is fabricated of heavy sheet metal and appropriate reinforcement members, comprises a floor 30, a pair of laterally spaced-apart side walls 32 and 34, a front wall 36 and a rear wall defined by a pivotally movable rear tailgate 38 which, as FIG. 1 shows, is movable between a closed, sealed position (shown in solid lines in FIG. 1) and an open position (shown in dashed lines in FIG. 1) relative to a discharge opening 35 at the rear of dump body 18.

The walls 32, 34 and 36 of dump body 18 and closed tailgate 38, all of which have top edges that are a substantially the same height above floor 30, cooperate to define a cavity 56 in dump body 18 which is open at its top.

Tailgate 38 is pivotally mounted on the upper rear ends of the side walls 32 and 34 by pivot means 40 and 42, respectively and is pivotally movable by means of a pair of extendable/retractable hydraulic cylinders 44 and 46, respectively, each of which is pivotally connected at one end 45 to its respective side wall of dump body 18 and at its other end 47 to tailgate 38. The cylinders 44 and 46 are simultaneously operable in response

to the operator's manipulation of a hydraulic control lever 48 in control assembly 22, as FIG. 4 shows.

As FIG. 5 shows, tailgate 38 is provided on its inner surface around the peripheral edges thereof with sealing means in the form of lengths of flexible resilient hose 50 which are secured on by clamping to the tailgate by strips of metal 52 attached to the tailgate by screws or bolts 54. The sealing means operate to prevent leakage of material from discharge opening 35 at the rear end of dump body 18 when tailgate 38 is in closed position, as hereinafter explained.

In accordance with the invention, cavity 56 in dump body 18 is divided into a first or rear compartment 60 and a second or front compartment 62, smaller in volume than rear compartment 60, by a partition means in the form of a rigid partition wall or weir 64, preferably made of sheet metal, which is rigidly secured in sealed relationship, as by welding along its edges, to the side walls 32 and 34 and floor 30 of dump body 18. Partition wall 64 extends upwardly from floor 30 so that its top edge 66, which is rounded as by welding a small-diameter tubular member 68 there along, terminates about 12 inches below the top edges of the associated side walls 32 and 34. Partition wall or weir 64 separates the compartments 60 and 62 and serves as a weir over the top edge 66 thereof water flows as rear compartment 60 is being filled with dredged material, as hereinafter explained.

Partition wall 64 is provided near its lower edge with one or more sluice ports or sluice holes 70, shown in FIGS. 1, 2, 3, 6, 7 and 8, which afford communication between front compartment 62 and rear compartment 60. Each sluice port 70 is closed by a gravity-operated flapper valve 72, located in chamber 60, when dump body 18 is in lowered, horizontal position (see FIGS. 2 and 7), but each sluice port 70 is opened by its flapper valve 72 when dump body 18 is in tilted position (see FIG. 8). The valves 72, when open, allow a small amount of residual water remaining in front compartment 62 after it has been drained to flow into rear compartment 60 through the sluice ports 70 when dump body 18 is tilted, as hereinafter explained.

As FIGS. 6, 7 and 8 show, each flapper valve 72 comprises a tubular member 73 which defines sluice hole 70 and is rigidly secured as by welding to partition wall 64 concentrically with a hole in the partition wall. Tubular member 73 is associated with a downwardly depending flexible resilient flap 76, made of heavy rubber, for example, which is secured as by screws 78 along the upper edge of the flap to a support bracket 79 welded to partition wall 64. Flap 76 overlies and in registry with the sluice hole 70 through tubular member 73. When dump body 18 is in lowered or raised position, flap 76 covers or uncovers, respectively, the sluice hole 70 of tubular member 73 to close or open, respectively, the sluice hole 70.

As FIGS. 1, 3 and 9 show, the floor 30 of front compartment 62 in dump body 18 is provided with a hole 79 having a hollow coupling 80 therein which defines a water drain port 81 and which is provided with a manually attachable and removable drain port cap 82. Cap 82 is manually removable to allow water accumulated in front compartment 62 to drain therefrom through drain port 81, as hereinafter explained. Cap 82 is secured by a chain 83 to prevent loss of misplacement thereof.

Means are provided to supply dredged material to rear compartment 60. As FIGS. 2 and 3 show, the floor 30 of front chamber 62 in dump body 18 is also provided

with a hole 96 having a hollow coupling 97 therein, similar in construction to coupling 80, but which serves as a dredged material inlet port 99, as hereinafter explained.

Referring to FIGS. 1, 2, 3 and 4, the pump mechanism 20 is mounted on chassis 12 and comprises a pump 84 driven by an internal combustion engine E. Pump 84 receives dredged material through a hose 88 from a dredging site (not shown) and delivers the material through an intermediate hose 89 (FIGS. 2 and 4) and a supply conduit in the form of a flexible supply hose 90 into rear compartment 60 in dump body 18. As FIG. 4 shows, pump 84 has an inlet port 92 to which hose 88 is connected. Pump 84 has an outlet port 94 which is connected by hose 89 to inlet port 99 on the outside of coupling 97 hereinbefore referred to (see FIG. 2). The aforementioned supply hose 90 has one end connected to the inside of coupling 97 and is supported on a pair of transverse support bars 100 and 101 which extend between the side walls 32 and 34 of dump body 18 so that the discharge end of supply hose 90 is located and aimed in a position to discharge dredged material into and toward the rear end of rear compartment 60 of dump body 18.

By directing the dredged material mixture M in such a manner, the sand S tends to pile up higher toward the rear end of rear compartment 60 and this facilitates the separation of the water W therefrom, as FIG. 2 shows. The mound of sand S progressively builds up toward the front end of compartment 60 and this leaves a clear region in compartment 60 wherein relatively clear water can accumulate and eventually spill over partition wall 64.

A siphon hose 102 is looped or suspended over support bar 100 so that one end of the hose depends into front compartment 62 near the bottom thereof and the other end depends into rear compartment 60 of dump body 18 near the bottom thereof.

Referring to FIG. 4, the hydraulic power supply mechanism 21 which is mounted on vehicle chassis 12 is driven by an internal combustion engine E and comprises a hydraulic pump 106 driven by the engine and a hydraulic fluid reservoir 108. If preferred, supply mechanism 21 and a separate engine (not shown) or motor (not shown) therefor could be mounted separately, as on a trailer (not shown) towed by dump truck 10. When power supply mechanism 21 is in operation, pump 106 supplies hydraulic operating fluid under pressure to the operator's control valve assembly 22. As FIG. 4 shows, the control valves 28A and 48A are conventional three-position (forward, neutral, reverse) type hydraulic control valves. Each valve is connected by two hydraulic lines to the respective component which it controls. Each of the two lines serves as a fluid supply or fluid return line, as valve lever position and operating conditions require. When a control valve 28A or 48A is opened by moving to its forward position in response to the operator's manipulation of a control lever 28 or 48, respectively, pressurized hydraulic fluid is supplied to operate hydraulic dump cylinders 26 and raise dump body 18 and to operate the tailgate cylinders 44 and 46 and open tailgate 38. When a control valve 28A or 48A is opened by moving to its reverse position the dump body 18 is lowered and the tailgate 38 is closed, respectively.

OPERATION OF FIRST EMBODIMENT

Initially assume that truck 10 is stopped near a dredging site, that its dump body 18 is in lowered, horizontal, loading position, that tailgate 38 is closed and seals the discharge opening 35 of the dump body, that drain port 81 is closed by its cap 82, and that each flapper valve 72 closes its associated sluice port 70 in partition wall 64. Further assume that inlet port 92 of dredging material pump 84 is connected by hose 88 to a supply of dredged material and that hose 89 to the outside of port 99 in dump body 18 by hose 89 and that the inside of port 99 is connected to supply hose 90. Assume that siphon hose 102 is in place. Also assume that engine E, dredge pump 84 and hydraulic pump 106 of power supply unit 21 are in operation so that pressurized hydraulic fluid is being supplied to control valve assembly 22 and that control valves 28A and 48A are in neutral position.

At the commencement of loading, dredged material flows from the dredging site, through hose 88, through dredge pump 84 which is being driven by engine E, through supply hose 90 and into rear compartment 60 in dump body 18. The dredged material takes the form of a fluid mixture M of liquid, such as water W and solid particulate matter, such as sand or silt S (hereafter called sand), for example. The volumetric ratio between the sand and water in mixture M can vary but typically is on the order of 4:1 and, therefore, rear compartment 60 has a larger volume than front compartment 62.

The discharge end of supply hose 90 is positioned and directed so that the mixture M therefrom is directed toward the rear end of rear compartment 60. Furthermore, as the mixture M accumulates, gravity causes the sand S, which is heavier than the water W, to settle out and accumulate on the bottom of rear compartment 60 and the water W in mixture M starts to separate therefrom and rises toward the top of compartment 60. Since the mixture M is directed toward the rear end of rear compartment 60, the sand S settles out in such a manner as to define a pile having a sloped surface 110 (shown in FIG. 2) which slopes downwardly toward the front end of rear compartment 60. However, because the rising level 112 (shown in FIG. 2) of water W in rear compartment 60 is horizontal, the water depth is substantially greater near the front end of rear compartment 60. As the mixture M accumulates in rear compartment 60, it bears against the flaps 76 of the flapper valves 72 and maintains the sluice ports 70 tightly closed. As FIG. 2 shows, the quantity of mixture M being pumped into rear compartment 60 increases, the water level 112 eventually rises to the top edge 66 of partition wall 64 and spills or flows thereover into front compartment 62 wherein it accumulates. As this is occurring, water W is also rising in that end of siphon 102 which is disposed in rear compartment 60 and buried in the sand S separating from the mixture M therein. The water W gradually rises in siphon 102 and eventually flows out the other end of siphon 102 into front compartment 62 in dump body 18. When rear compartment 60 is filled to a level whereat addition of further mixture M therein would cause raw mixture M to overflow the top edge 66 of partition wall 64, the operator stops dredge pump 84. The operator then manually removes drain cap 82 from coupling 80 to open drain port 81 and allow the water W accumulated in front compartment 62 to drain therefrom onto the ground. A small amount of residual water remains trapped in compartment 62 because of the shape of coupling 80.

At this stage, the sand S in rear chamber 60 is relatively dry and ready for transport to a disposal site. At this point, engine E and power supply unit 21 may be shut down to conserve fuel. Truck 10 is then driven to an appropriate location whereat the relatively dry sand S is to be dumped.

To commence dumping, engine E and power supply unit 21 is restarted, the operator manipulates lever 28 of valve 28A to extend the dump cylinders 26 and tilt dump body 18. Simultaneously, or after dump body 18 is fully tilted, the operator manipulates lever 48 of valve 48A to operate the tailgate cylinders 44 and 46 to open tailgate 38. The sand S in rear compartment 60 of dump body 18 is thus able to pour out through opening 35 beneath open tailgate 38. Since the sand S is now relatively dry, some of it may tend to adhere to floor 30 in rear compartment 60 and not pour freely therefrom. However, as the sand S exits rear compartment 60, it flows away from and uncovers the flaps 76 of the flapper valves 72 which, because dump body 18 and partition wall 64 are tilted, are free to swing and depend vertically under the force of gravity and thereby open the sluice ports 70 (see FIG. 8). Thus, the small amount of residual water trapped in now-tilted front compartment 62 is able to flow through the sluice ports 70 and down and across the tilted floor 30 of rear compartment 60 to fluidize and enhance the flow of any sand S adhering to the floor 30 of rear compartment 60.

After all sand S is dumped, the operator manipulates the appropriate control levers to close tailgate 38 and to lower dump body 18 to transport position, whereupon engine E and power supply mechanism 21 may be shut down until again needed.

ARRANGEMENT AND OPERATION OF SECOND EMBODIMENT

FIGS. 10 and 11 depict a second embodiment of the invention wherein the means for supplying dredged material in the form of mixture M to rear compartment 60 of dump body 18 differ from the arrangement shown in the first embodiment. In particular, in FIGS. 1, 2 and 3 for the first embodiments such means comprise a supply conduit in the form of the flexible supply hose 90 which has its inlet end connected to inlet port 99 of coupling 97 in hole 96 in dump body 18 and has its outlet end aimed at the rear end of rear compartment 60. That arrangement enables the sand S of mixture M to mound up at the rear end of rear compartment 60 as the operator changes the position of the flexible supply hose 90. However, if the output pressure of supply pump 84 is unduly high, entry of the mixture M into rear compartment 60 is accompanied by a great degree of turbulence and splashing which can adversely effect build up of the mound of sand S and slow down separation of water W from the mixture M.

The structure and arrangement shown in FIGS. 10 and 11 is designed to overcome this. In the second embodiment of the invention the means for supplying dredged material in the form of mixture M to rear compartment 60 comprises a supply conduit in the form of a rigid supply pipe 120 disposed lengthwise of and above rear compartment 60 and having two rows of a series of spaced apart supply holes 122 along and near the bottom thereof. The supply pipe 120 is fed with dredged material from the rear end 124 thereof, i.e. the end thereof most remote from the partition wall or weir 64 so that the rear end of rear compartment 60, i.e. that end most remote from partition wall or weir 64, fills up first

and the rising level of sand S progressively blocks the supply holes 122 to thereby control the manner in which rear compartment 60 is filled to facilitate water separation, as FIG. 10 shows.

Supply pipe 120 is rigidly secured to dump body 18 by means of a support member attached to and between the side walls 32 and 34 of the dump body. Pipe 120 is open at its front end. The rear inlet end 124 of pipe 120 is supplied from a generally L-shaped intermediate pipe 130 which is connected to outlet port 94 of pump 84 by means of a hose or pipe 132. Intermediate pipe 130 is rigidly secured to the exterior of tailgate 38 by means of brackets 134. Intermediate pipe 130 is provided with a few holes 122B near its outlet end 136. Since, as FIG. 10 shows, there is relative movement between supply pipe 120 and intermediate pipe 130 and the rear inlet end 136 of supply pipe 120 are each cut on a bias and make end-to-end contact with each other but are not permanently joined together. However, when dump body 18 is in horizontal position and tailgate 38 is in closed position, the end-to-end contact between supply pipe 120 and intermediate pipe 130 is sufficiently close and tight so as to prevent the leakage of mixture M out through the joint.

It is to be understood, however, that means other than intermediate pipe 130, such as a flexible hose (not shown) could be provided to supply the rear inlet end 124 of supply pipe 120. Furthermore, the holes 122 could be replaced by a continuous slot (not shown) extending along the underside of pipe 120.

In operation, assuming dump body 18 is horizontal and tailgate 38 is closed, the mixture M of dredged material is supplied by pump 84, through hose 132, through intermediate pipe 130 and through supply pipe 120. The bulk of the mixture M entering supply pipe 120 is first discharged through those holes 122B nearest the outlet end 136 of intermediate pipe 130 and then through those holes 122 nearest the inlet end 124 of supply pipe 120. Thus, the sand S of mixture M first fills the rear end of rear compartment 60. As the sand S builds up, the holes 122B in pipe 130 and those holes 122 near the rear end 124 of pipe 120 become blocked and this causes the mixture M to be expelled from those still unblocked holes 122 progressively nearer the front end 126 of supply pipe 120. This, in turn, causes the mound of sand S to gradually build up forwardly in compartment 60, as FIG. 10 shows. The fact that the pipes 120 and 130 separate as pipe 120 tilts during a dumping operation also permits pipe 120 to drain rearwardly and to clear itself during a dumping operation.

In all other respects, the second embodiment operates in the same manner as the first embodiment as hereinbefore described. If preferred, the second embodiment, like the first, may or may not be provided with a siphon 102.

I claim:

1. Apparatus for receiving, separating and disposing of a mixture comprising liquid and particulate solid matter comprising:
 - a mobile container;
 - an imperforate partition having an edge near the top thereof mounted in and dividing said container into two compartments, each compartment being open to atmosphere at its top;
 - one compartment being adapted to receive and contain said mixture and to enable said particulate solid matter to settle at the bottom thereof under the

force of gravity and to enable said liquid to rise to the top thereof;

the other compartment being adapted to receive and contain said liquid which rises in said first chamber and flows over said edge of said partition;

a siphon means connected between said two compartments for effecting water flow from within said mixture in said one compartment into said other compartment;

first means communicating with said other compartment and selectively operable to effect removal of substantially all liquid from said other compartment;

and second means selectively operable to effect removal of said particulate solid matter from said one compartment.

2. Apparatus according to claim 1 wherein said first means comprises a drain port communicating with said other compartment and means to selectively open and close said drain port.

3. Apparatus according to claim 1 or 2 wherein said second means comprises a discharge opening communicating with said one compartment and through which drained particulate solid matter can be expelled from said one compartment, and gate means selectively movable to open and closed positions relative to said discharge opening.

4. Apparatus according to claim 3 wherein said mobile container comprises a tiltable dump body selectively movable between a loading and transport position and a tilted position, wherein said second means comprises means to effect tilting of said dump body and for moving said gate means, whereby said drained particulate solid matter is expelled by gravity through said opening when said dump body is in tilted position and said gate means is in open position.

5. Apparatus according to claim 4 further comprising a sluice port near the bottom of said partition which communicates between said two compartments, and valve means operable to close said sluice port when said dump body is in loading and transport position and to open said sluice port when said dump body is in tilted position to thereby enable residual water in said other compartment to flow into said one compartment to facilitate dumping of said drained particulate matter from said one compartment.

6. Apparatus according to claim 5 further including supply conduit means mounted in said mobile container and having an inlet port connectable to receive said mixture from a source and having discharge outlet means for directing said mixture into said one compartment so that said particulate matter settles out so as to form a mound near that end of said one compartment more remote from said partition, which mound forms progressively nearer that end of said one compartment closer to said partition.

7. Apparatus according to claim 6 wherein said supply conduit means comprises a conduit wherein said discharge outlet means takes the form of a discharge outlet which is adjustably movable relative to said one compartment.

8. Apparatus according to claim 6 wherein said supply conduit means comprises a supply conduit disposed above said one compartment and wherein said inlet port is located near the rear end of said one compartment and wherein said discharge outlet means comprises opening means along said conduit near the bottom side thereof to effect forming of said mound progressively

nearer the end of said one compartment closer to said partition.

9. Apparatus according to claim 6 wherein said opening means comprises a series of openings to effect forming of said mound progressively nearer the end of said one compartment closer to said partition.

10. Apparatus according to claim 6 wherein said opening means comprises a continuous slit to effect forming of said mound progressively nearer the end of said one compartment closer to said partition.

11. Apparatus for receiving, separating and disposing of a mixture comprising liquid and particulate solid matter comprising:

a vehicle;

a container mounted in said vehicle;

an imperforate partition having an edge near the top thereof mounted in and dividing said container into two compartments, each compartment being open to atmosphere at its top;

one compartment being adapted to receive and contain said mixture and to enable said particulate solid matter to settle at the bottom thereof under the force of gravity and to enable said liquid to rise to the top thereof;

the other compartment being adapted to receive and contain said liquid which rises in said first chamber and flows over said edge of said partition; a siphon means connected between said two compartments for effecting water flow from within said mixture in said one compartment into said other compartment;

first means communicating with said other compartment and selectively operable to effect removal of liquid from said other compartment;

said first means comprising a drain port communicating with said other compartment and means to selectively open and close said drain port;

and second means selectively operable to effect removal of said particulate solid matter from said one compartment;

said second means comprising a discharge opening communicating with said one compartment and through which drained particulate solid matter can be expelled from said one compartment, and gate means selectively movable to open and closed positions relative to said discharge opening.

12. Apparatus according to claim 11 wherein said container is a tiltable dump body selectively movable on said vehicle between a loading and transport position and a tilted position, wherein said second means further comprises means to effect tilting of said dump body and for moving said gate means, whereby said drained particulate solid matter is expelled by gravity through said opening when said dump body is in tilted position and said gate means is in open position.

13. Apparatus according to claim 12 further comprising a sluice port near the bottom of said partition which communicates between said two compartments, and valve means operable to close said sluice port when said dump body is in loading and transport position and to open said sluice port when said dump body is in tilted position to thereby enable residual water in said other compartment to flow into said one compartment to facilitate dumping of said drained particulate matter from said one compartment.

14. Apparatus for receiving, separating and disposing of a mixture comprising liquid and particulate solid matter comprising:

a dump truck having a tiltable dump body with a tailgate at its rear end;

an imperforate partition having an edge near the top mounted in said dump body and of lesser height than the walls of said dump body and dividing said dump body into a front compartment and a rear compartment, each compartment being open to atmosphere at its top, said rear compartment being adapted to receive and contain said mixture and to enable said particulate solid matter to settle at the bottom thereof under the force of gravity and to enable said liquid to rise to the top thereof;

a siphon extending over said partition to connect said front and rear compartments, said front compartment being adapted to receive and contain said liquid which passes through said siphon from said rear compartment;

said rear compartment having a discharge opening at its rear end which is closed by said tailgate;

a drain port which can be opened to discharge substantially all liquid accumulated in said front compartment leaving a residual amount of liquid therein;

sluice holes near the bottom of said partition; and gravity-operated flapper valves for said sluice holes which open when said sump body is tilted during dumping to allow said residual liquid in the front compartment to flow across the floor of said rear compartment and facilitate dumping of the relatively dry sand therefrom.

15. A method of processing dredged material comprising a mixture of water and particulate solid material comprising the steps of:

providing a container having an imperforate partition wall therein having an edge near the top thereof and dividing said container into two compartments, each compartment being open to atmosphere at its top, one compartment being adapted to receive said mixture therein and the other compartment being adapted to receive water separated from said mixture in said one compartment as the particulate solid material settles to the bottom of said one compartment and the water rises and overflows said edge of said partition wall into said other compartment;

directing said dredged mixture into said one compartment so that said solid material settling out therein forms a mound which is higher in a region remote from said partition wall than in an other region closer to said partition wall;

continuing to direct said mixture into said one compartment so that the water level in said other region rises high enough to overflow said edge of said partition wall;

and removing substantially all water accumulated in said other compartment prior to dumping particulate solid material from said one compartment.

16. A method according to claim 15 comprising the further steps of initially directing said mixture into said one compartment at a location remote from said partition wall and subsequently directing said mixture into said one compartment at another location closer to said partition wall.

17. A method according to claim 16 comprising the further steps of subsequently directing said mixture into said one compartment at locations which are progressively closer to said partition wall.

18. A method according to claim 15 or 16 or 17 further including the step of removing said particulate solid material from said one compartment by tilting said container so as to dump said particulate solid material.

* * * * *