

EXHIBIT

*Blasters-1016*



www.archive.org  
415.561.6767  
415.840-0391 e-fax

Internet Archive  
300 Funston Avenue  
San Francisco, CA 94118

---

## AFFIDAVIT OF CHRISTOPHER BUTLER

1. I am the Office Manager at the Internet Archive, located in San Francisco, California. I make this declaration of my own personal knowledge.

2. The Internet Archive is a website that provides access to a digital library of Internet sites and other cultural artifacts in digital form. Like a paper library, we provide free access to researchers, historians, scholars, and the general public. The Internet Archive has partnered with and receives support from various institutions, including the Library of Congress.

3. The Internet Archive has created a service known as the Wayback Machine. The Wayback Machine makes it possible to surf more than 450 billion pages stored in the Internet Archive's web archive. Visitors to the Wayback Machine can search archives by URL (i.e., a website address). If archived records for a URL are available, the visitor will be presented with a list of available dates. The visitor may select one of those dates, and then begin surfing on an archived version of the Web. The links on the archived files, when served by the Wayback Machine, point to other archived files (whether HTML pages or images). If a visitor clicks on a link on an archived page, the Wayback Machine will serve the archived file with the closest available date to the page upon which the link appeared and was clicked.

4. The archived data made viewable and browseable by the Wayback Machine is compiled using software programs known as crawlers, which surf the Web and automatically store copies of web files, preserving these files as they exist at the point of time of capture.

5. The Internet Archive assigns a URL on its site to the archived files in the format [http://web.archive.org/web/\[Year in yyyy\]\[Month in mm\]\[Day in dd\]\[Time code in hh:mm:ss\]/\[Archived URL\]](http://web.archive.org/web/[Year in yyyy][Month in mm][Day in dd][Time code in hh:mm:ss]/[Archived URL]). Thus, the Internet Archive URL <http://web.archive.org/web/19970126045828/http://www.archive.org/> would be the URL for the record of the Internet Archive home page HTML file (<http://www.archive.org/>) archived on January 26, 1997 at 4:58 a.m. and 28 seconds (1997/01/26 at 04:58:28). A web browser may be set such that a printout from it will display the URL of a web page in the printout's footer. The date assigned by the Internet Archive applies to the HTML file but not to image files linked therein. Thus images that appear on a page may not have been archived on the same date as the HTML file. Likewise, if a website is designed with "frames," the date assigned by the Internet Archive applies to the frameset as a whole, and not the individual pages within each frame.

6. Attached hereto as Exhibit A are true and accurate copies of printouts of the Internet Archive's records of the HTML files or PDF files for the URLs and the dates specified in the footer of the printout (HTML) or attached coversheet (PDF).

7. I declare under penalty of perjury that the foregoing is true and correct.

DATE: 12/28/17

  
\_\_\_\_\_  
Christopher Butler



CALIFORNIA JURAT

---

See Attached Document.

A notary public or other officer completing this certificate verifies only the identity of the individual who signed the document to which this certificate is attached, and not the truthfulness, accuracy, or validity of that document.

State of California  
County of San Francisco

Subscribed and sworn to (or affirmed) before me on this

28 day of DECEMBER, 2017, by

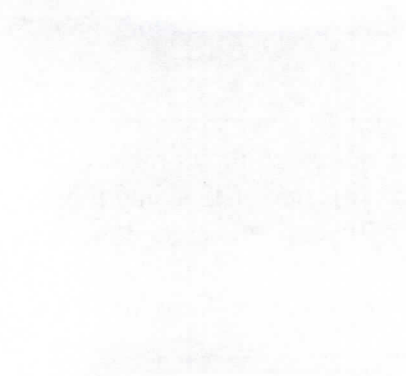
Christopher Butler,

proved to me on the basis of satisfactory evidence to be the person who appeared before me.

Signature: 







# Exhibit A





**The leader in high-pressure water jet technology.**

- [Pumps and Units](#)
- [Accessories](#)
- [Water Jet Applications](#)
- [Water Jetting Forum](#)
- [Videos - Water Jets in Action](#)
- [Rentals & Customer Support](#)
- [Contact Us](#)
- [FAQ, News & Reference](#)
- [Literature](#)

## *Pavement Maintenance and Stripe Removal*



### **STARJET™**

NLB's exclusive STARJET™ system quickly removes stripes from concrete or asphalt, using nothing but ultra-high pressure water from rotating water jet nozzles. Removal rates of up to 7,000 feet per hour (2,134 meters per hour) are common.

The STARJET assembly mounts to the front of a truck, with all operating controls in the cab. The truck also carries a water tank and an NLB ULTRA-CLEAN 40201D pump unit.



- [Brochure](#)

### **STRIPEJET™**

For areas with limited access (e.g., parking lots, garages, intersections), the STRIPEJET™ is ideal. Its short wheelbase and tight turning radius assure easy maneuverability, and it maintains a smooth, consistent speed in forward or reverse.

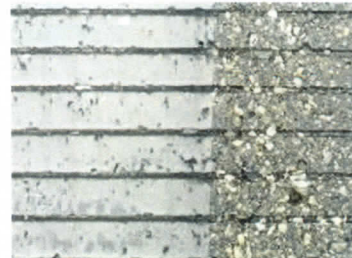
Options include vacuum recovery, like the STARJET™ and five heads, for cleaning paths of 8", 10", 15", 20", or 24".



- [Brochure](#)

### **RUNWAY CLEANING**

The rubber build-up from repeated landings makes runways slippery... but NLB systems remove that build-up quickly. Runway cleaning system includes SPIN JET® unit and 10,000 psi (700 bar) pump on a trailer, towed by an airport truck.



- [Brochure](#)

### **Other Water Jet Applications**

[Automotive Paint Shops](#) | [Surface Preparation](#) | [Tank and Tote Cleaning](#)  
[Heat Exchanger and Pipe Cleaning](#) | [Deburring and Deflashing](#)  
[Water Jet Cutting](#) | [Hydrodemolition](#) | [Pavement Maintenance and Stripe Removal](#)

[Pumps and Units](#) | [Accessories](#) | [Water Jet Applications](#) | [Rentals & Support](#) | [Videos](#) | [FAQ's](#) | [Literature](#) | [Contact Us](#) | [Home](#)

Phone: (248) 624-5555 | Fax: (248) 624-0908 | email: [nlbmktg@nlbusa.com](mailto:nlbmktg@nlbusa.com)

© NLB Corp., Wixom, MI USA

[https://web.archive.org/web/20040327023427/http://www.nlbcorp.com:80/pdf-files/Starjet\\_Stripe\\_Jet.pdf](https://web.archive.org/web/20040327023427/http://www.nlbcorp.com:80/pdf-files/Starjet_Stripe_Jet.pdf)



# Water Jet Solutions for Removing Pavement Markings and Runway Rubber



*The Leader in High-Pressure  
Water Jet Technology*



# NLB water jets put you miles ahead

If you want to remove pavement markings faster and more thoroughly than abrasive methods — without damaging the road — you need an NLB water jetting system. Contractors and DOTs agree that water jetting:

- completely removes coatings, membranes, thermal epoxies, and rubber build-up... even from grooved pavement
- leaves concrete and asphalt undamaged
- creates a stronger bond for restriping
- eliminates dust and debris, with optional vacuum recovery
- saves labor, since fewer operators are needed

- won't expose the environment or operating personnel to abrasive media or chemicals.

NLB delivers the power of ultra-high pressure water (up to 40,000 psi, or 2,800 bar) in automated and semi-automated systems. The STARJET™ handles long-line jobs, removing up to 7,000 ft./hr., while our compact STRIPEJET™ is specially designed for short-line jobs, like parking decks and intersections.

Both are complete systems, with a patented rotating nozzle assembly, an ULTRACLEAN 40® pump unit, water tank, and optional vacuum recovery to contain water and debris. Simple controls make it easy for the driver

to work alone, and the nozzle sizes and pattern are adjustable to suit the application.

Water jetting not only removes markings more thoroughly, but results in a better surface over time. In Waterloo, Iowa, for example, water jetting was used to remove markings on one stretch of road, and grinding on another stretch. Both were then coated with epoxy, and after five years, much more striping remained on the water jetted surface.

Similar results have been obtained in other states, where contractors report that water jetting has improved their productivity and profitability.

***"It's the most economical and efficient means of road preparation we have found. We highly recommend NLB."***

— Sue Willman  
Willams and Willman Line Painting, Inc.  
Kittanning, PA

## Water Jetting



*Water jetting completely removes stripes, without damaging the underlying pavement, better than any other method.*

## Grinding



*Grinding can leave ruts in the pavement as well as traces of striping.*



# FEATURES AND SPECIFICATIONS

## Nozzle Assembly

- Rotating seal has up to 16 nozzles, 8"-dia. cleaning area
- Speed variable to 3,000 rpm, with hydraulic drive and closed-loop proportional control
- Front-mounted unit swings easily to right or left of truck
- Hydraulically lowered for use and raised for storage
- Optional 15" (0.4 cm) diameter steel housing for BarJet™, used in runway cleaning
- Optional vacuum recovery housing

## Truck and Trailer

- Hydrostatic drive maintains a consistent speed, 0-3 mph (4.8 km/h)
- Tow-behind water tank with 1,625-gallon (6,150 l) capacity
- Second tank recommended (for refilling while first is in use)

## Controls

- Single control panel at driver's seat, plus remote pendant
- PLC-based for simplicity and reliability

## Vacuum (optional)

- 1,000 cfm @ 6-8" of mercury
- Weighs just 2,000 lbs. (908 kg)
- Fits into 4' x 8' space (1.2 x 2.4 m)
- 220-gallon (833 l) tank
- 44 hp (33 kw) diesel engine

# StarJet™



A patented nozzle assembly is mounted to the bumper of the truck, which transports the pump and vacuum recovery (optional), and tows the water supply.



In one pass, most markings are completely removed and the surface is prepared for recoating.



Controls are simple and conveniently located.



NLB's hydrostatic drive maintains a constant speed for stripe removal. It is disengaged to return the truck to normal driving mode.

# FEATURES AND SPECIFICATIONS

## Nozzle Assembly

- Rotating seal has up to 16 nozzles
- Rotation speed variable to 3,000 rpm
- Heads available for cleaning paths of 8", 10", 15", 20", or 24"
- 15"-diameter assembly with vacuum seal and collection port
- Hydraulically lowered and raised

## Vehicle

- Size: 10'-2" x 4'-0" (310 cm x 120 cm)
- Weight: 2,360 lbs. (1,070 kg)
- Speed: 0-12 mph (19 km/h) forward, 0-5 mph (8 km/h) reverse
- 24 hp (18 kw) diesel engine
- 14.5 gal. (55 l) fuel tank allows 10 hours of operation
- Lights and back-up sound warning

## Controls

- Driver's controls include nozzle rotation speed, rotation stop/start, UHP water stop/start, and forward and reverse speeds with cruise control

## Vacuum (optional)

- 1,000 cfm @ 6-8" of mercury
- Weighs just 2,000 lbs. (908 kg)
- Fits into 4' x 8' space (1.2 x 2.4 m)
- 220-gallon (833 l) tank
- 44 hp (33 kw) diesel engine

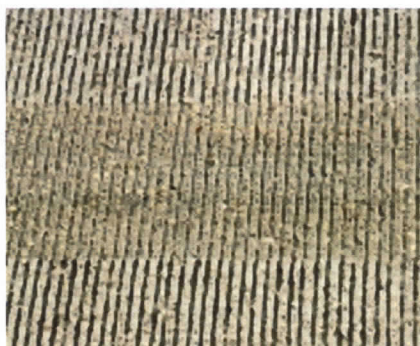
# StripeJet™

*The STRIPEJET™ is compact and maneuverable.*



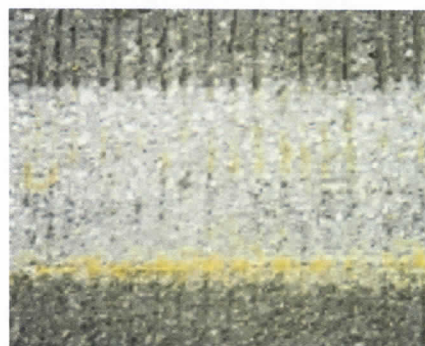
*Floor coating removal has proven another successful application for the STRIPEJET™.*

## Water Jetting



*Water jets get right into the grooves, leaving the concrete clean at every level.*

## Grinding



*Markings are still visible on this tined pavement after grinding.*



## **STARJET™ for the open road**

The STARJET™ has successfully completed many high-production projects since its introduction in 1994. The nozzle assembly is mounted to the front of a truck, which also carries the NLB pump unit and tows the water tank. The nozzle assembly is hydraulically raised and lowered, and can be positioned to the left or right of the cab.

The driver operates the STARJET™ as he drives, occasionally leaning out the window to monitor progress.



*The STARJET™ is a self-contained system that makes short work of long runs.*

***"The STARJET™ leaves no dust, requires no extra equipment, and is twice as fast as sandblasting, shot-blasting or grinding for our applications."***

*– Sue Willman, Willams and Willman Line Painting, Inc., Kittaning, PA*

## **STRIPEJET™ for tight spots**

For areas with limited access (e.g., parking lots, garages, intersections), the STRIPEJET™ is ideal. Its short wheelbase and tight turning radius assure easy maneuverability, and it maintains a smooth, consistent speed in forward or reverse.

Options include vacuum recovery, like the STARJET™, and five heads, for cleaning paths of 8", 10", 15", 20", or 24".



*The STRIPEJET™ is very mobile, with one-man operation.*

## **VORTEX™ for smaller jobs**

The VORTEX™ model 36-9950-15A is ideal for jobs that are too big to do manually, yet can't justify automated water jetting. NLB's patented SPIN JET® technology removes pavement markings, floor coatings (thick or thin films) or runway rubber build-up at rates up to 2,000 square feet per hour while an operator simply walks behind the unit.



*The VORTEX™ is lightweight (138 lbs.) and features vacuum recovery.*



*Hard rubber wheels accommodate a variety of surfaces.*



# THE NLB ADVANTAGE

Pavement marking removal is another innovative use of water jetting by NLB Corp., a leader in the technology for 30 years. Contractors and industrial companies around the world depend on NLB pumps and accessories to solve difficult challenges in product removal, surface preparation, hydrodemolition, and much more.

Water jetting is fast and productive, and avoids exposing employees (and the environment) to chemicals or contaminants. It also simplifies clean-up and leaves a clean, dry surface. NLB helps you get the most out of water jetting, with a complete package that includes:

- pumps from 2,000 to 40,000 psi (140 to 2,800 bar), with a wide range of flows;
- diesel and electric models, with various horsepower and mounting options;
- engineered for long life, and low operating costs;
- dedicated, in-house engineering and R&D;
- unsurpassed selection of accessories and customizing options;
- advanced controls architecture, integrating the latest in controls hardware;
- purchase, rent or lease, from convenient regional offices;
- toll-free parts ordering, from the largest inventory in the industry;
- a global network of full-service distributors.

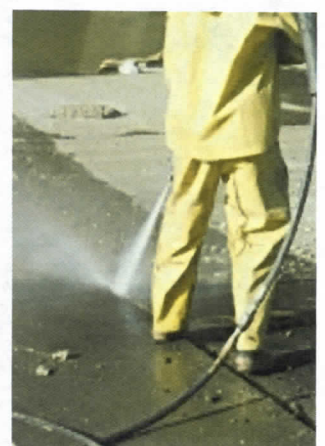
## Airport Applications



A VORTEX® quickly removes pavement markings from runways, and includes vacuum recovery to simplify clean-up.



Remove runway rubber with a STARJET™ or STRIPEJET™.



For close work, like expansion joint removal, water jetting can be done by hand.

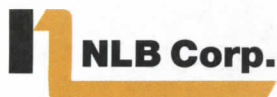
## Reliable UHP pumps



### Model 40201D

- 40,000 psi (2,800 bar)
- 6 gpm (22.7 lpm)
- Slow-running pump minimizes wear
- Built for continuous duty
- Trailer, skid or dolly mounting

## NLB. The Contractor's Choice.



**Headquarters**  
29830 Beck Road  
Wixom, MI 48393-2824  
(248) 624-5555  
Fax: (248) 624-0908  
e-mail: nlbmktg@nlbusa.com  
<http://www.nlbcorp.com>

**Regional Offices**  
159 Harmony Road, Mickleton, NJ 08056  
(856) 423-2211, Fax: (856) 423-0997  
  
201 S. 16th, La Porte, TX 77571  
(281) 471-7761, Fax: (281) 471-8738  
  
14302 Highway 44 N., Gonzales, LA 70737  
(225) 622-1666, Fax: (225) 622-7366

**NLB Europe**  
Gentianenlaan 17  
3233 VC Oostvoorne  
Netherlands  
31-(0) 81-482811  
Fax: 31-(0) 81-485238  
e-mail: [watercle@publishnet.nl](mailto:watercle@publishnet.nl)



P.C.S. Inc.



Company  
Profile

Hydro-  
Blasting

Hydro-  
Demolition

Portfolio



Description: Thermoplastic & paint stripe removal  
Location: FL, GA, TN  
Size: Over 1.5 million feet removed  
Category: Highway Stripe Removal  
Date: 1999-2002



Description: Epoxy & Rust Scale Removal  
Location: FL  
Size: 10,000 Sq.Ft.  
Category: Surface Preparation  
Date: 1999



Description: Removal of Heavy Tank Lining Epoxy  
Location: IL  
Size: Removed 17,000 Sq.Ft.  
Category: Surface Preparation  
Date: 2000

Description: Removal of Scale & Debris from Pipes & Tubes  
Location: FL  
Size: 1/2" - 3 FT in Diameter, 5 ft - 300 ft Length  
Category: Industrial Cleaning  
Date: 2000



Description: Removal of Epoxy Tank Lining  
Location: FL  
Size: 6000 Sq.Ft.  
Category: Surface Preparation with Full Vacuum Recovery  
Date: 2002



Description: Removal of Runway Markings with Full Vacuum  
Recovery  
Location: FL  
Size: 18,000 Sq.Ft.  
Category: Runway Stripe Removal  
Date: 2002





Description: Removal of Fiberglass  
Location: FL  
Size: 7,500 Sq.Ft.  
Category: Swimming Pools  
Date: 2000



Description: Removal of Heavy Epoxy from Aquarium  
Location: IL  
Size: 17,000 Sq.Ft.  
Category: Surface Preparation  
Date: 2000



Description: Vertical Paint & Loose Stucco Removal  
Location: Miami, FL  
Size: 20,000 Sq.Ft.  
Category: Surface Preparation  
Date: 1999

Description: Removal of Marine Growth & Paint  
Location: FL  
Size:  
Category: Marine Vessels  
Date: 2000



Description: Removal of Lead Based Paint from Runway  
Location: FL  
Size: 60,000 Sq.Ft.  
Category: Runway Stripe Removal  
Date: 2000



Description: Removal Non-skid & Exterior Marine Paint  
Location: Various, FL  
Size: 40 Ft. - 210 Ft.  
Category: Marine Vessels  
Date: 2001 - 2002

Description: Removal of 3/4" of Concrete from Bridge Deck  
Location: US & Caribbean  
Size: 70,000 Sq.Ft.  
Category: Hydro-Demolition  
Date: 2002





Description: Removal Heavy Traffic Membrane at Parking Decks  
Location: West Coast Fl  
Size: 55,000 Sq.Ft.  
Category: Surface Preparation  
Date: 2002



Description: Removal of 3" of Concrete from Bridge Deck  
Location: US & Caribbean  
Size: 30,000 Sq.Ft.  
Category: Hydro-Demolition  
Date: 2002



Description: Removal of 11" of concrete Bridge Deck  
Location: US & Caribbean  
Size: 5,000 Sq.Ft.  
Category: Hydro-Demolition  
Date: 2002

- Home
- Job Opportunities
- News
- Parts & Supplies

P.C.S. Inc P.O. Box 959 · Hobe Sound FL · 33475  
(877) 964-7312 Toll-Free  
(772) 223-7393 Office  
(772) 223-5461 Fax  
(865) 448-9593 Regional Office, Knoxville, TN  
[email@waterblasting.com](mailto:email@waterblasting.com)



**P.C.S. Inc.**



**40,000 PSI**

*"The Power of Water Working For You"*

**Company  
Profile**

**Hydro-  
Blasting**

**Hydro-  
Demolition**

**Portfolio**



[Home](#)

[Job Opportunities](#)

[News](#)

[Parts & Supplies](#)

**P.C.S. Inc P.O. Box 959 · Hobe Sound FL · 33475**  
(877) 964-7312 Toll-Free



(772) 223-7393 Office  
(772) 223-5461 Fax  
(865) 448-9593 Regional Office, Knoxville, TN  
[email@waterblasting.com](mailto:email@waterblasting.com)