



US007343165B2

(12) **United States Patent**
Obradovich

(10) **Patent No.:** **US 7,343,165 B2**
(45) **Date of Patent:** **Mar. 11, 2008**

(54) **GPS PUBLICATION APPLICATION SERVER**

(75) Inventor: **Michael L. Obradovich**, San Clemente, CA (US)

(73) Assignee: **American Calcar Inc.**, Las Vegas, NV (US)

(*) Notice: Subject to any disclaimer, the term of this patent is extended or adjusted under 35 U.S.C. 154(b) by 597 days.

(Continued)

(21) Appl. No.: **09/833,969**

FOREIGN PATENT DOCUMENTS

(22) Filed: **Apr. 11, 2001**

EP 0713317 5/1996

(65) **Prior Publication Data**

US 2002/0045456 A1 Apr. 18, 2002

(Continued)

Related U.S. Application Data

OTHER PUBLICATIONS

(60) Provisional application No. 60/196,575, filed on Apr. 11, 2000.

Written Opinion for International Application PCT/US01/12066, filed Apr. 11, 2001, Mailed Apr. 10, 2002 (4 pgs).

(51) **Int. Cl.**
H04Q 7/20 (2006.01)

(Continued)

(52) **U.S. Cl.** **455/456.1; 455/461**

Primary Examiner—Lee Nguyen

(58) **Field of Classification Search** .. 455/456.1–456.6, 455/461, 457; 342/357.01, 357.09
See application file for complete search history.

(74) *Attorney, Agent, or Firm*—Christie, Parker & Hale, LLP

(57)

ABSTRACT

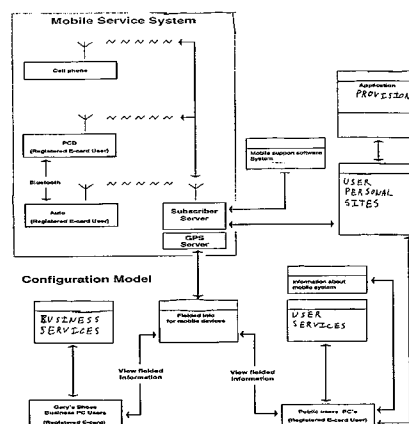
(56) **References Cited**

U.S. PATENT DOCUMENTS

4,350,970 A	9/1982	von Tomkewitsch
4,521,857 A	6/1985	Reynolds, III
4,792,803 A	12/1988	Madnick et al.
4,812,843 A	3/1989	Champion, III et al.
4,977,509 A	12/1990	Pitchford et al.
5,043,736 A	8/1991	Darnell et al.
5,119,504 A	6/1992	Durboraw, III
5,124,915 A	6/1992	Krenzel
5,164,904 A	11/1992	Sumner
5,189,632 A	2/1993	Paajanen et al.
5,225,843 A	7/1993	Thompson
5,235,633 A	8/1993	Dennison et al.

A GPS publication application server. A mobile location knowledgeable device is in communication with a server. The server provides indications of the device's location to a home page associated with the device. The home page includes information about a user of the device and methods of contacting the user at any particular time. The server is also in communication with a variety of application servers. The application servers push information to the device depending on the device location and preferences listed in the home page of the device.

12 Claims, 6 Drawing Sheets



U.S. PATENT DOCUMENTS

5,420,592 A 5/1995 Johnson
 5,432,841 A 7/1995 Rimer 379/59
 5,450,329 A 9/1995 Tanner
 5,479,351 A 12/1995 Woo et al.
 5,479,482 A 12/1995 Grimes
 5,497,339 A 3/1996 Bernard
 5,517,193 A 5/1996 Allison et al.
 5,519,403 A 5/1996 Bickley et al.
 5,528,248 A 6/1996 Steiner
 5,555,286 A 9/1996 Tendler
 5,559,520 A 9/1996 Barzegar et al.
 5,559,707 A 9/1996 DeLorme et al.
 5,572,204 A 11/1996 Timm et al.
 5,579,535 A 11/1996 Orlen et al.
 5,625,668 A 4/1997 Loomis et al.
 5,625,884 A 4/1997 Gitlin et al.
 5,627,549 A 5/1997 Park
 5,630,068 A 5/1997 Vela et al.
 5,636,269 A 6/1997 Eisdorfer
 5,642,285 A 6/1997 Woo et al.
 5,647,002 A 7/1997 Brunson
 5,648,763 A 7/1997 Long
 5,648,769 A 7/1997 Sato et al.
 5,654,886 A 8/1997 Zereski, Jr. et al.
 5,661,652 A 8/1997 Sprague et al.
 5,663,548 A 9/1997 Hayashi et al.
 5,673,039 A 9/1997 Pietzsch et al.
 5,677,837 A 10/1997 Reynolds
 5,680,444 A 10/1997 Reeves
 5,694,514 A 12/1997 Evans et al.
 5,699,056 A 12/1997 Yoshida
 5,712,625 A 1/1998 Murphy
 5,717,748 A 2/1998 Sneed, Jr. et al.
 5,717,749 A 2/1998 Sneed, Jr. et al.
 5,719,936 A 2/1998 Hillenmayer
 5,720,037 A 2/1998 Biliris et al.
 5,724,417 A 3/1998 Bartholomew et al.
 5,727,053 A 3/1998 Sizer, II et al.
 5,731,997 A 3/1998 Manson et al.
 5,742,509 A 4/1998 Goldberg et al.
 5,748,252 A 5/1998 Draves
 5,760,742 A 6/1998 Branch et al.
 5,774,070 A 6/1998 Rendon
 5,774,825 A 6/1998 Reynolds
 5,774,827 A 6/1998 Smith, Jr. et al.
 5,781,150 A 7/1998 Norris
 5,786,789 A 7/1998 Janky
 5,790,974 A 8/1998 Tognazzini
 5,794,174 A 8/1998 Janky et al.
 5,802,492 A 9/1998 DeLorme et al.
 5,819,227 A 10/1998 Obuchi
 5,848,373 A 12/1998 DeLorme et al.
 5,864,305 A 1/1999 Rosenquist
 5,908,464 A 6/1999 Kishigami et al.
 5,919,246 A 7/1999 Waizmann et al.
 5,929,774 A 7/1999 Charlton
 5,938,721 A 8/1999 Dussell et al.
 5,946,626 A 8/1999 Foladare et al. 455/456
 5,948,040 A 9/1999 DeLorme et al.
 5,963,956 A 10/1999 Smartt
 5,982,298 A 11/1999 Lappenbusch et al.
 5,999,124 A 12/1999 Sheynblat
 5,999,877 A 12/1999 Takahashi et al.
 6,028,550 A 2/2000 Froeberg et al.
 6,047,327 A 4/2000 Tso et al.
 6,075,874 A 6/2000 Higashikubo et al.
 6,087,965 A 7/2000 Murphy
 6,092,076 A 7/2000 McDonough et al.
 6,107,939 A 8/2000 Sorden
 6,107,944 A 8/2000 Behr et al.
 6,119,066 A 9/2000 Sugiura et al.

6,122,506 A 9/2000 Lau et al.
 6,124,825 A 9/2000 Eschenbach
 6,127,945 A 10/2000 Mura-Smith
 6,131,066 A 10/2000 Ahrens et al.
 6,134,501 A 10/2000 Oumi
 6,141,610 A 10/2000 Rothert et al.
 6,144,920 A 11/2000 Mikame
 6,147,598 A 11/2000 Murphy et al.
 6,148,261 A 11/2000 Obradovich et al.
 6,163,749 A 12/2000 McDonough et al.
 6,163,753 A 12/2000 Beckmann et al.
 6,166,626 A 12/2000 Janky et al.
 6,169,955 B1 1/2001 Fultz
 6,173,231 B1 1/2001 Chojnacki
 6,184,801 B1 2/2001 Janky
 6,185,427 B1 2/2001 Krasner et al.
 6,188,957 B1 2/2001 Bechtolsheim et al.
 6,192,312 B1 2/2001 Hummelsheim
 6,192,314 B1 2/2001 Khavakh et al.
 6,199,013 B1 3/2001 O'Shea
 6,202,023 B1 3/2001 Hancock et al.
 6,208,934 B1 3/2001 Bechtolsheim et al.
 6,212,392 B1 4/2001 Fitch et al.
 6,212,470 B1 4/2001 Seymour et al.
 6,212,472 B1 4/2001 Nonaka et al.
 6,212,473 B1 4/2001 Stefan et al.
 6,212,550 B1 4/2001 Segur
 6,215,857 B1 4/2001 Kasiviswanathan
 6,215,993 B1 4/2001 Ulveland
 6,219,557 B1 4/2001 Havinis
 6,219,614 B1 4/2001 Uchihaki et al.
 6,219,694 B1 4/2001 Lazaridis et al.
 6,321,158 B1 11/2001 DeLorme et al.
 6,332,127 B1 12/2001 Bandera et al.
 6,360,102 B1 * 3/2002 Havinis et al. 455/457
 6,377,810 B1 * 4/2002 Geiger et al. 455/456.2
 2002/0068551 A1 * 6/2002 Strunk et al. 455/414

FOREIGN PATENT DOCUMENTS

EP 0 829 704 A2 3/1998
 EP 0853287 A2 7/1998
 JP 9-231263 9/1997
 JP 113072 1/1999
 WO WO 99/56144 11/1999
 WO WO 00/03364 1/2000
 WO WO 00/04730 1/2000

OTHER PUBLICATIONS

International Search Report of PCT/US01/12066 mailed Aug. 8, 2001 (4 pages).
 Supplementary European Search Report for European Application Publication No. 1279305, published Jan. 29, 2003, Search Report Dated Mar. 21, 2003 (3 pages).
 Alcatel web pages, Alcatel, Nov. 24, 1998 (58 pages).
 Giga Information Group, Inc. web pages, Giga Information Group, Inc. Nov. 24, 1998 (4 pages).
 Spyglass web pages, Spyglass, Nov. 24, 1998 (58 pages).
 Think Thin, PC Magazine, Dec. 1, 1998 (p. 9).
 McDonald, Keith D., "Course 122—GPS Fundamentals & Applications", Navtech Seminars & GPS Supply, Inc., Catamaran Resort Hotel, San Diego, CA, Mar. 22-23, 1999 (336 sheets).
 Kelley, Tom, "Traffic Control Traffic Data, Unplugged", ITS World, Jul./Aug. 2000 (pp. 28-30).
 Bishop, Richard, "The Final Stop Remember IVHS?", ITS World Jul./Aug. 2000 (pp. 14-15).
 Metricom in the News, web pages, Metricom, Inc., Nov. 24, 1998 (8 pages).
 Demmler, "Another car navigation system," Automotive Engineering, Jun. 1996, pp. 87,89, 2 pages.
 Jewett, "Toyota offers navigation system as U.S. option," Automotive News, Nov. 18, 1996, p. 16, 2 pages.

Yamaguchi, "Honda in-car navigation system for the U.S.," Automotive Engineering, Jun. 1996, pp. 82-84, 3 pages.

Heuchert, "Eyes Forward: An ergonomic solution to driver information overload," Automotive Engineering, Sep. 1996, pp. 27-31, 5 pages.

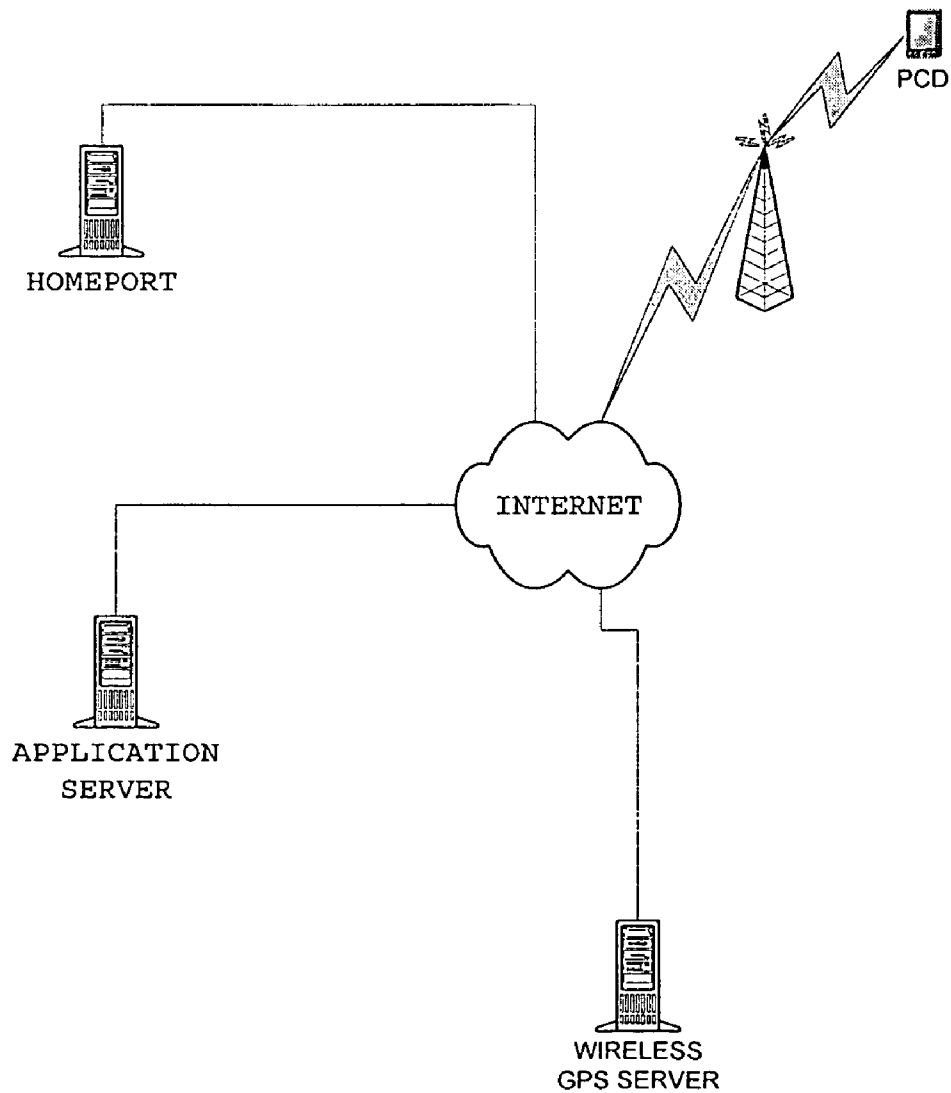
Noriyuki, "Just Think of It as a Big Eye in the Sky . . . Watching," Los Angeles Times Section E, pp. 1, 8, Apr. 27, 1997, 3 pages.

"Trimble Demonstrates Trimconnect," Flying, Jul. 1997, p. 51, 1 page.

Steve Dye with Dr. Frank Baylin, The GPS Manual Principles and Applications, "Land Navigation Markets—Overview", Feb. 1997, ISBN:0-917893-29-8, 23 pages.

* cited by examiner

FIG. 1



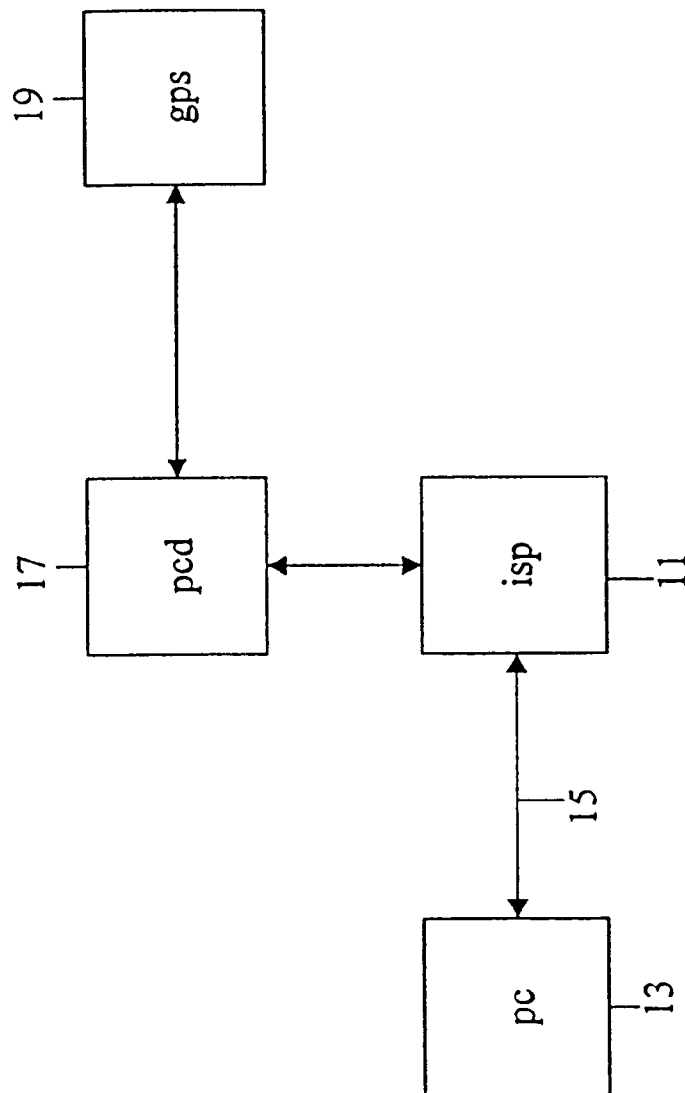


FIGURE 1 A

FIG. 2

E-CARD From Steve :

To: Mike O.
Subject: E-cards
Date: Mon, 14 Apr 2000 1:30 PM EST
Level: 3

Location:
Lat 33.560246
Long -56.557878

Name Numbers Attachments Credit Card Signature

Picture or logo Steve

Add Card To Database

Cancel OK

Numbers

Man: E-mail: .com
Wk: Web site:
Cell: PCO #:
Pgr: 949 555-1212 Auto Dir. #:

Attachments

Credit Card

VISA
Providian Financial
Card #:
Exp:
Name on card: Steve :

Signature

Business Card

CALCAN

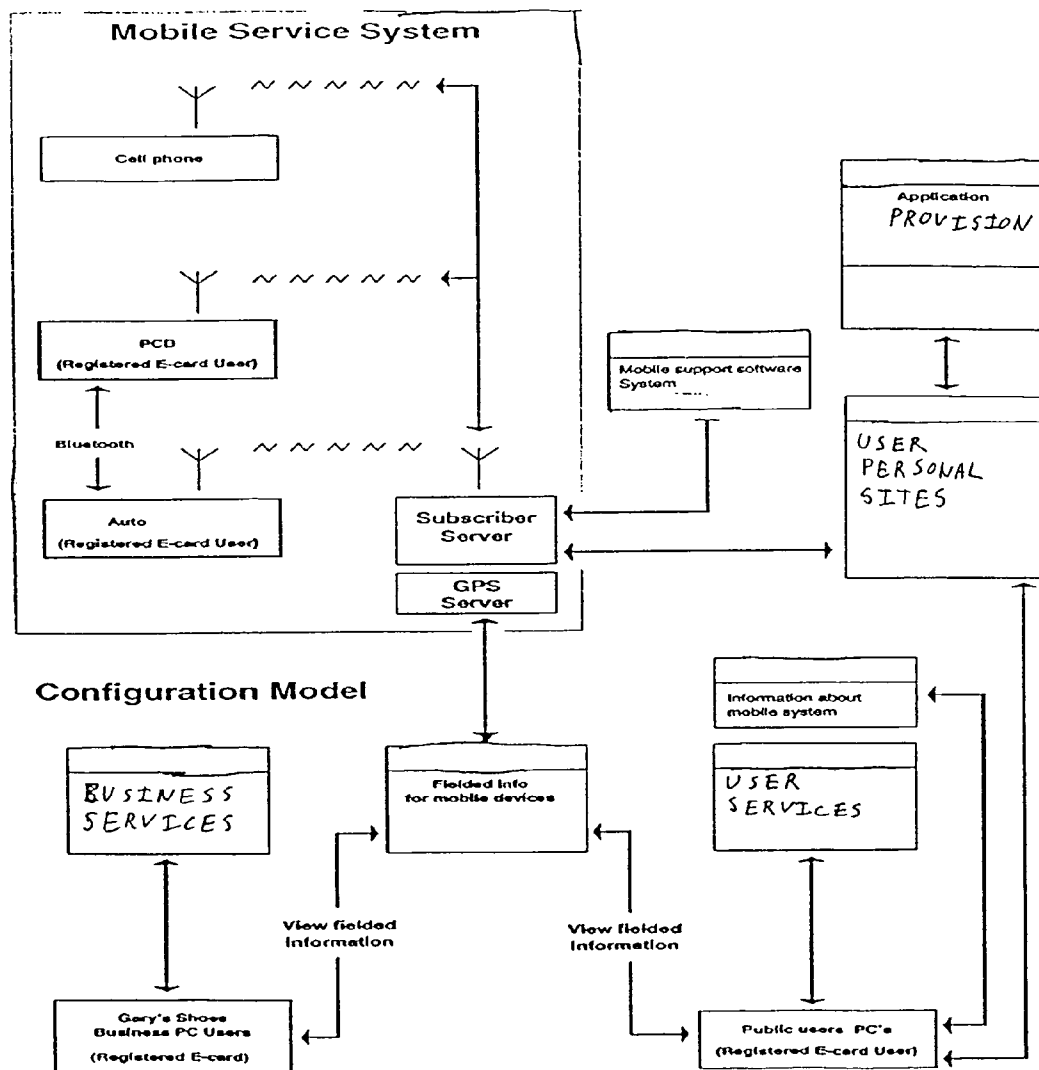


FIG 3

FIG 4

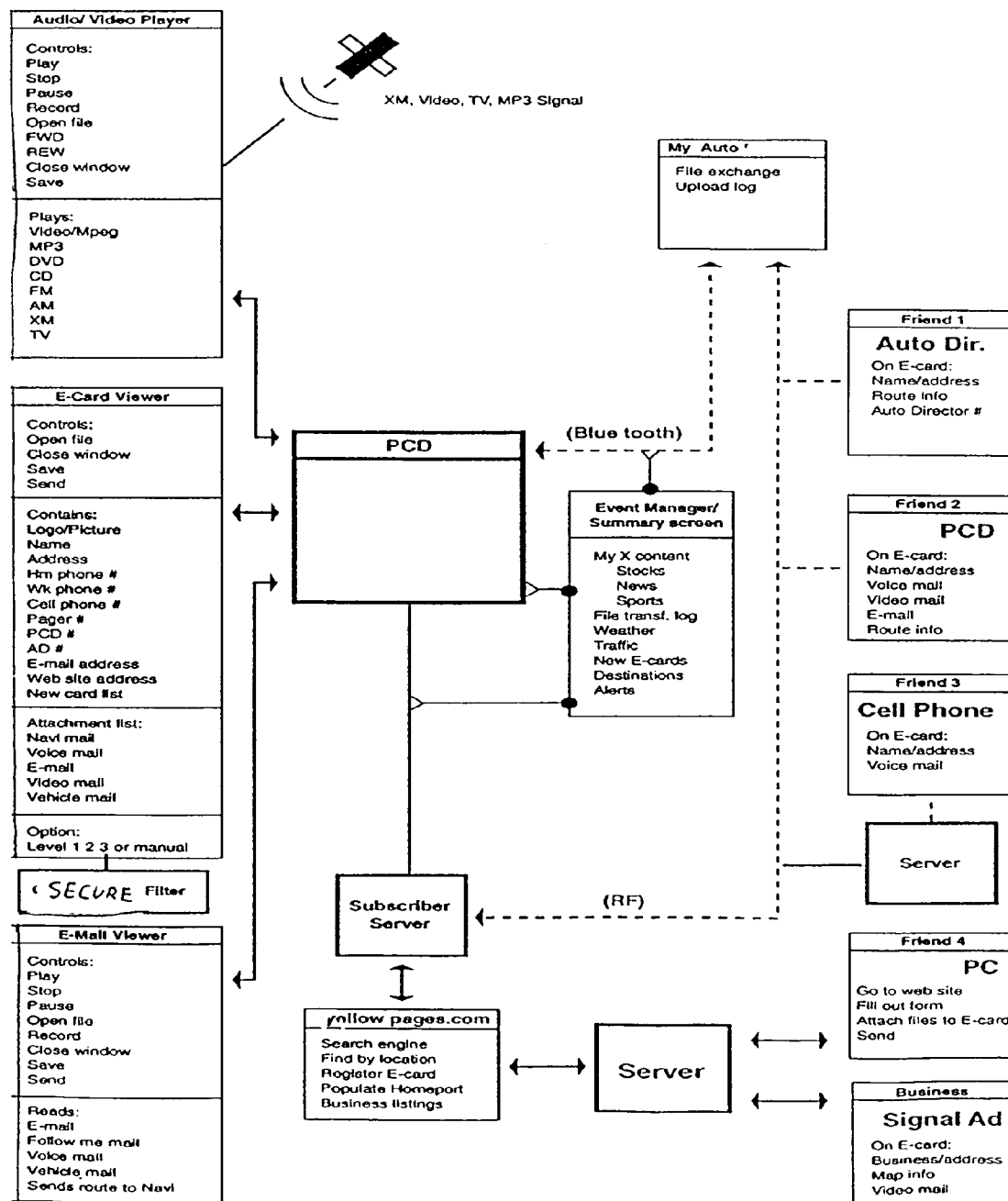
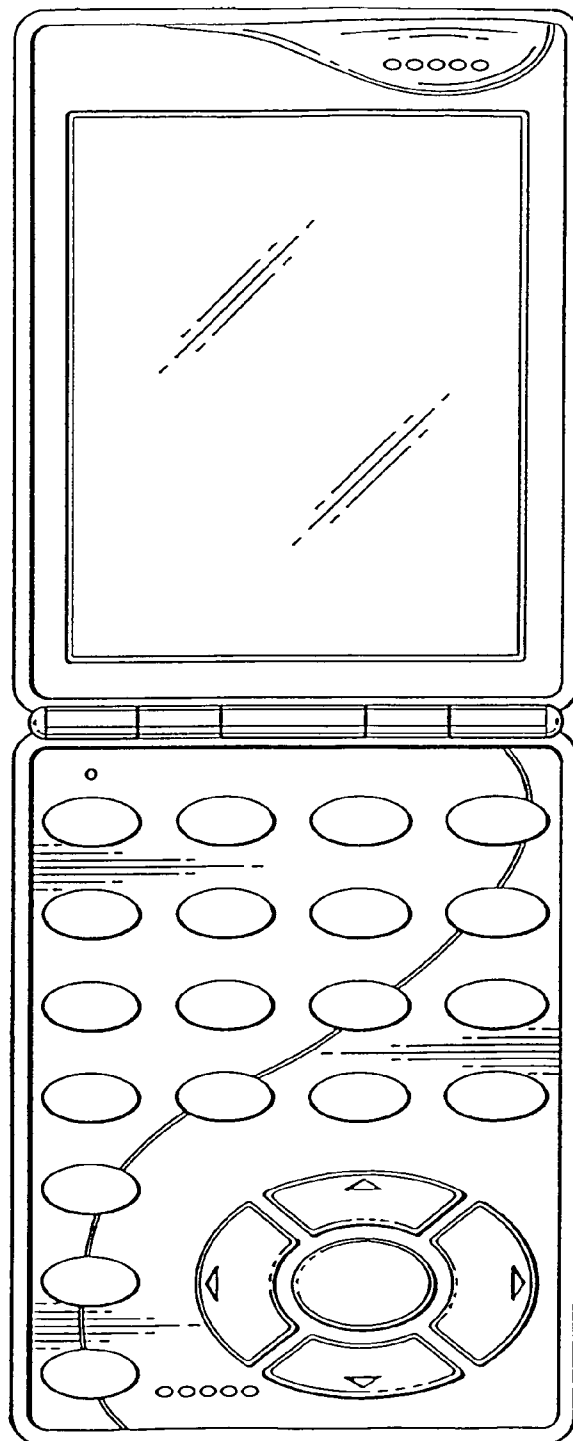


FIG. 5



1

GPS PUBLICATION APPLICATION SERVER**CROSS-REFERENCE TO RELATED APPLICATIONS**

The present application claims the benefit of the filing date of U.S. Provisional Patent Application No. 60/196,575, filed Apr. 11, 2000, the disclosure of which is incorporated by reference.

BACKGROUND

The present invention relates generally to user mobile information systems, and more specifically to location identifiable user mobile communication systems.

The use of mobile communication units, such as cellular telephones, is becoming increasingly common. Cellular telephones, for example, allow individuals to communicate with others when those individuals are away from a base of operations, on the go, or at locations having insufficient or inconvenient land telephone lines. In addition, communication systems such as cellular telephones provide a simple and easy way to communicate with individuals carrying cellular telephones no matter where they are, so long as one knows the appropriate telephone number.

At times, however, knowledge of the location of an individual is important. For example, some communication methods, such as facsimile, generally are not mobile in nature. For example, often to send a facsimile one needs to know the location and number of a fixed fax machine to which a fax may be sent. Similarly, it is often difficult to courier packages to a person whose location is not known.

However, in many instances it is not feasible to contact an individual, even one who has a cellular telephone, and ask the individual their location. The individual may not know their location or other particular details such as street address or facsimile number necessary to send the individual items. Moreover, some individuals may jealously guard the number of their cellular telephone, so that in many instances it is not possible to simply call a person on their cellular telephone to determine their location. Further, in some instances people are unable to answer their cellular telephone to provide their location information to those who know their telephone number.

Thus, the use of cellular telephones and generally mobile communication systems, provides for the increased transmission of information between individuals, particularly those on the move. However, the communication of information, particularly other than a voice information, is not fully utilized using such communication systems.

In addition, individuals on the move often have unique information requirements, particularly with respect to information concerning places near their location. Such needs are also not fully met by mobile communication systems, even though such information is generally available on communication networks. For example, server computers reachable through the internet are commonly provide nearly boundless information, with much of the information having geographical relevance. Such information is often largely unavailable to users of mobile communication systems, and moreover is not particularly adapted to suit the needs of users of mobile communication systems.

SUMMARY OF THE INVENTION

In one embodiment of the present invention a GPS server periodically requests information from a mobile device. The

2

mobile device includes GPS receiver circuitry to receive GPS signals. The GPS receiver makes use of information provided by a GPS reference server and error correction processing performed by the GPS reference server to determine its location. Upon probing by the GPS server the mobile device provides the GPS server the present position of the mobile device, as well as additional information.

Techniques for communicating GPS related information to wireless devices, particularly information allowing a wireless communication device to quickly obtain its location are known. In the present invention, certain user preferences are communicated to Internet coupled computer devices.

In this new system and method certain preferences are sent from a wireless device to a GPS server and then forwarded on to a separate application server for storing in the users personal home page location, or user-specific storage space allows the user to populate their own database and communicate certain information from that database to other users that were enabled to receive the populated information.

Work groups, community groups and other would be a recipient of this populated database system, thereby allowing dynamic data exchange between preidentified parties. Moreover, different users may have different specific applications that take advantage of this population technique.

Examples include advertising information provided to a user's device once the user's travel pattern is established and personal preferences are considered. Call ID system could be updated and other users would be able to communicate with the user upon receipt of their requests. Using this system the user may simply send visited locations as determined by the GPS server to the users home page for storage and for populating a user's database. Acting on timely requests the GPS server modifies the user's preferences upon probing the user for the GPS data and contact information.

At any time the user could contact the home page for review of stored information and to modify the status of users who subscribe to the user's home page.

This new publishing and subscribing system puts increases storage and calculation tasks on an application server to sort out and serve up to the user upon a request. The PCD device uses less battery power and is not required to perform task beyond its normal operations and changing the user's preferences for the publishing system. The user may request a complete review of their dynamic data upon contacting their own home page. Caller ID systems thereafter route the request for contact to the user's home page and then be given choices for going forward. The user can deny any party access upon sending data along with the GPS probe made by the GPS server. This system does not require the user to make further contact when changing their preferences.

BRIEF DESCRIPTION OF THE DRAWINGS

FIG. 1A is a block diagram of a system in accordance with aspects of the present invention.

FIG. 1 is a further block diagram of a system in accordance with aspects of the present invention.

FIG. 2 illustrates an e-card in accordance with aspects of the present invention.

FIG. 3 illustrates a block diagram of interconnections in accordance with the present invention.

FIG. 4 is a further block diagram of interconnections in accordance with aspects of the present invention.

FIG. 5 illustrates a PCD.

DETAILED DESCRIPTION

FIG. 1A illustrates a block diagram of a system in accordance with aspects of the present invention. An Internet service provider (ISP) 11 is linked to a user personal computer 13 via telephone lines 15. In actuality, one or more computer units may be interdisposed between the PC and the server, with the server being a node on the Internet. The server is also connected via communication link to a personal computer device 17. One embodiment of the personal computer device is illustrated in FIG. 5. The personal computer device may be a PCD of the type disclosed in U.S. patent application Ser. No. 08/879,955, now U.S. Pat. No. 6,148,261, the disclosure of which is incorporated herein in its entirety by reference.

The PCD includes a global positioning system (GPS) receiver. Accordingly, the PCD receives signals from GPS satellites 19. The received signals allow the PCD to determine its latitude and longitude.

The PC, in one embodiment serves as a server. The server includes a database. The database includes information pertaining to a variety of topics. More specifically, in one embodiment the database includes information relating to locations. That is, the database includes information regarding specific locations, as well as information pertaining to transportation to and from these locations.

The information in the database is provided by businesses, individuals, and users of PCDs. Thus, the database contains general information provided by businesses, stores, and other commercial entities who wish to make information concerning their business available to others. The database also contains personalized information regarding points of interest and other matters provided by users of PCDs. The database therefore provides a source of information to the users of PCDs, particularly information regarding geographic locations.

FIG. 1 illustrates a further system of the present invention. A personal communication device (PCD) 11 provides GPS receiver and wireless communication capability, particularly cellular telephone communication capability. The PCD may, in one embodiment, be such as disclosed in the aforementioned U.S. patent application Ser. No. 08/879,955, now U.S. Pat. No. 6,148,261. The PCD receives information from a wireless GPS server 13 via cellular telephone communication link. The PCD also provides the wireless GPS server information over the communication link, including information relating to the location of the PCD. In one embodiment the PCD determines its location using, for example, its GPS capability. In another embodiment the PCD contains only a limited amount of GPS receiver processing circuitry. Instead, some of the GPS processing occurs at a wireless GPS server. The wireless GPS server performs, for example, functions such as determining satellites in view of the PCD and the relative Doppler offsets of the satellites. This may be accomplished, for example, using apparatus and methods discussed in U.S. Pat. No. 5,663,734 entitled "GPS Receiver and Method for Processing GPS Signals," the disclosure of which is incorporated by reference. In one embodiment, error correction processing is also performed by the wireless GPS server, thereby further allowing reduced single processing on the part of the PCD.

Accordingly, in one embodiment the PCD provides a wireless GPS server with the present location and an identifying tag indicating the identity of the PCD. The GPS server provides the PCD location and identifier to an application server 15. The application server is provided the information from the GPS server via the Internet, or in some

cases an intranet. The application server upon receipt of the PCD location and identifying tag executes a program which updates a user-specific data space 17. In one embodiment, the user-specific space is located on the same computer unit as the application server. In other embodiments, the user-specific data space is stored in a separate computer system.

In one application the application server and the wireless GPS server communicate using a hypertext transfer protocol (HTTP) and the wireless GPS server requests that application server execute a CGI script or program making use of the PCD identifier and the PCD location data.

Thereafter the user contacts the application server to obtain information stored in the user-specific storage area. In addition, other individuals may also contact the application server request of the location of the PCD device. This may be accomplished for example, in order to determine how to contact the individual using the PCD.

In one embodiment the user-specific storage space includes information found on an electronic card (e-card). An example of information stored in the e-card is illustrated in FIG. 2. As illustrated in FIG. 2, the e-card includes a name, an address such as may be found on physical business cards. The e-card also includes communication information, such as phone numbers for home, work, cell, pager, and PCD, and automobile. Further, the numbers include a web site location and an e-mail address. The card may also include attachments, which is particularly useful when a user is transmitting e-cards to another person. The e-card additionally contains credit card information. The credit card information, along with a signature also available on the e-card, allows the e-card to be used as a payment transfer mechanism. Further, the e-card includes the current location of the individual associated with the e-card.

In addition, the user-specific space is populated with information useful to the particular user. This may be done in the manner described in U.S. patent application Ser. No. 09/126,936 the disclosure of which is incorporated by reference.

In operation, in one embodiment the GPS server periodically transmits a request for, or probes, the location of a PCD. The PCD responds to the probe by providing position information to the GPS server. The GPS server provides the application server an indication of the PCD and an indication of the location of the PCD. The application server updates the user-specific space with the location of the PCD, or provides the location information to another computer system which performs the update.

The user of the PCD may also contact the application server, or other computer maintaining the PCD user-specific space, to review and modify data in the user-specific space. The user may also provide varying levels of access to data in the user-specific space, or the e-card, to both persons known and unknown to the user.

In one embodiment the GPS Server performs many of the functions of the system. Thus, in one embodiment the GPS Server performs probes of PCDs and receives preference updates from users, including contact phone numbers for the user. The GPS server sends updated user information to the application server which stores the information in the user-specific space, which in one embodiment is similar to an individual home page, which may be commonly found on the internet. The user calls a number associated with the GPS server to modify or review status or make additional requests and changes with respect to the user-specific space, and subscribers and parties requesting location and contact information on user are given information, which may vary

5

by the requester. The user makes the determination as to the access privileges provided requester, generally prior to their request.

The user of the user-specific space provides many benefits, including by providing a location for information concerning the individual. For example, in some embodiments the user-specific space includes tagged movie files, medical files, credit information attached to the contact card. In further embodiments the information may include smart caller ID, phone number calling ID, call forwarding techniques, Navigation information, navigation address books, navigation bookmarks, personal address books, contact manager software, schedule directors, e-mail, fax documents, voice mail are combined on the user's home page for easy access by the user/publisher. The user can arrange specific techniques for contacting him or his dynamic data from specific authorized subscribers.

The user-specific storage space therefore provides for storage and retrieval of e-cards. In addition, the space stores complete navigation information, maps, address books, persona files, navigation bookmarks, advertising bookmarks, smart contact bookmarks all GPS tagged, as well as providing Smart Contact manager, caller ID, Phone ID, call forwarding, call screening, e-mail system, Mail, Voice mail, dynamic data collection system from GPS server, advertising searching and smart bookmarking, and user schedule manager functions.

E-cards provide electronic card file of the user's personal information and attached movie files, complete attachment system from voice, data, fax e-911 medical, personal, and vehicle data system establishes contact and screening system for subscribers. A user updates the e_card, as well as other information on the space on occasion when contacted by GPS server.

FIG. 3 illustrates a communication flow block diagram between various components of systems in accordance with the present invention. The embodiment in FIG. 3 includes a subscriber server and a GPS server. The subscriber server and GPS server are in communication with various web servers over the Internet, as well as with mobile devices. As illustrated, the mobile devices include a cell phone, a PCD, and an automobile phone. Together, the subscriber server, GPS server, and the mobile devices comprise a mobile service system. The PCD and the automobile telephone system are both coupled to user-specific storage areas which provide additional information.

The GPS server and subscriber server are also coupled to numerous web servers over the Internet. For example, the subscriber server is coupled to a mobile support software system. The mobile support software system provides application information and programs to the mobile devices by way of the subscriber server as necessary.

The subscriber server is also coupled to a web server containing numerous user-specific storage spaces. The web server is also coupled to an additional application server containing numerous applications for use in configuring user information. The web server, and the user-specific storage space is also coupled to public users over the Internet. Public users may, for example, interrogate the user-specific space to determine the user's location or other information regarding the user. As discussed in U.S. patent application Ser. No. 09/126,936, the disclosure of which is incorporated by reference, security levels may be implemented so as to restrict the number of people who can access various information about the individual. The general public, and specifically business PC users, may also desire to provide information to the users of for example, PCDs or others

6

moving in location. Accordingly, the general public may provide information to a fielded information web server. The fielded information web server makes location-specific information available to the GPS server, and thus the mobile users. This allows the mobile users for example, to interrogate the fielded information web server to determine the location of nearby places of business in which they may have an interest. This interest may be because they intended to visit the business, are due to a sudden change in circumstance which makes the mobile user desirous of visiting the business.

FIG. 4 further illustrates communication and function flow for a PCD. As illustrated, the PCD is in communication with an automobile user and the PCD is also in communication with the subscriber server. Communication with the subscriber server allows the PCD to obtain information regarding businesses, for example.

In accordance with aspects the present invention, the central computer system also maintains information in a database allowing individual users to be easily located both physically and in terms of their electronic communication locations. The central computer system maintains a database of individuals and an Internet address linked to each individual. The Internet address linked to each individual need not be a unique address, but instead many individuals may make use of a single computer indicated by the Internet address in the Internet address field. For example, for many cases the central computer system may be the computer system identified by the Internet address.

The system also contains a large number of computer systems linked by the Internet, and which are the computer systems pointed to by the address field for the individuals in the Internet address field. Each of these computers form a home site computer system. The responsibility of maintaining the home site computer systems are the responsibility of the individuals.

The home site computer system maintains electronic contact information and geographic location of the individual. The electronic contact information includes home telephone numbers, office telephone numbers, cellular telephone numbers, fax numbers, and e-mail addresses. The geographic location is provided in terms of latitude and longitude, although street addresses or site names can also be provided with the latitude and longitude.

Also linked to each electronic communication identifier in geographic location information is a security level index. In one embodiment, the security level index is a number between one and ten. The individual assigns security level indexes for each item of information. The user also identifies other individuals who may wish to contact the user, and indicates which security index level each such other individual should be provided. Other individuals who are not identified by the user are provided a default security level index. When the home site is contacted by another individual, the other individual provides an identifier, such as the individual's name to the home site. In one embodiment the other individual also provides a password to the home site so that the home site may authenticate the identity of the individual. Based on the identity of the individual, preferably authenticated, the home site determines the other individual's security level index.

The other individual is thereafter only able to obtain information for the other individual's security level index value and those values below the other individual's security level index. For example, a user's general office work number may be assigned a security level index of ten, with the user's direct line phone number provided a security level

7

index of six. A first other individual with a security index level of seven can only obtain the user's general office number while a second other individual with a security index level of six can also obtain the user's direct line phone number.

The user's geographic location is updated through the PCD. As previously discussed, the PCD can be used to provide e-mails indicative of the user's location in varying manners. When the user's home site computer system is identified as an e-mail address for such updates, the user's home site computer system may track the user over time. In one embodiment of the invention, the user's home site computer system is always provided a copy of any e-mail position updates provided by the PCD.

The present invention therefore provides a location-centric information system. Although the invention has been described with respect to certain specific embodiments, it should be appreciated that the invention may be practiced other than as specifically described.

What is claimed is:

1. A method of providing contact information regarding a user, the method comprising:

allocating a user-specific space in memory accessible over a computer network to a specific user;

associating a mobile communication device with the user; determining a geographic location of the user by receiving location information provided by a mobile communication device;

storing data indicative of the location of the user in the user-specific space;

receiving, from the user, additional data regarding the user, the additional data being related to the geographic location of the user;

storing the additional data regarding the user in the user-specific space;

receiving from the user an access list of possible requesters of the data and the additional data;

storing the access list of possible requesters of the data and the additional data in the user-specific space; and providing the data indicative of the location of the user and the additional data regarding the user to possible requesters on the access list.

2. A location relevant server system comprising:

a personal communication device (PCD) comprising a GPS receiver and wireless communication capability;

a GPS server receiving information indicating a geographic location and a unique identifier associated with the PCD, the GPS server providing the PCD location and the unique identifier associated with the PCD to an application server;

the application server configured to execute a program upon receiving the geographic location and the unique identifier information associated with the PCD to update a user specific data space with a current geographic location and the unique identifier associated with the PCD, the application server further configured to allow different users different access to the application sever based on the identity of a user;

wherein the application server is further configured to store information received from and concerning an individual associated with the PCD in the user specific data space, the stored information in the user specific data space including an access list of possible request-

8

ers of information concerning the individual associated with the PCD, the access list being received from the individual associated with the PCD; and

wherein the information stored in the user specific data space includes additional information related to the geographic location of the individual associated with the PCD.

3. The system according to claim 2 wherein the application server is further configured to provide the information concerning the individual to a requester.

4. The system according to claim 3 wherein the application server is further configured to modify data in the user specific data space.

5. The system according to claim 4 wherein the data in the user specific data space includes contact information regarding the individual.

6. The system according to claim 5 wherein the contact information regarding the individual includes, phone, fax, and e-mail information.

7. The system according to claim 4 wherein the application server is configured to provide different information concerning the individual to different requesters.

8. The system according to claim 2 wherein the GPS server is further configured to send PCD locations and identifiers to the application server.

9. The system according to claim 8 wherein the user specific data space stores contact information regarding a user associated with the PCD.

10. The system according to claim 9 wherein the contact information regarding the individual includes, phone, fax, and e-mail information.

11. A method of providing contact information regarding a user, the method comprising:

allocating a user-specific space in memory accessible over a computer network to a user;

associating a mobile communication device with the user; receiving a plurality of user contact information from the user, each user contact information associated with a location of the user;

storing the plurality of user contact information in the user-specific space;

receiving a request from a requestor of information for user contact information;

determining a current location of the user by receiving current location information provided by a mobile communication device;

determining the user contact information associated with the current location of the user; and

providing the user contact information associated with the current location of the user to the requestor of information.

12. The method according to claim 11 further comprising: receiving from the user an access list of possible requesters of information;

storing the access list in the user-specific space;

determining whether a requestor of information is on the access list upon receiving a request from the requestor of information for user contact information; and

providing the user contact information associated with the current location of the user if the requestor of information is on the access list.

* * * * *