

Clinical Therapeutics

Volume 16 Number 6
November-December 1994

FEB 01 1995

HEALTH SCIENCES LIBRARY

THE INTERNATIONAL JOURNAL OF DRUG THERAPY

REVIEW ARTICLES

- Editorial Comment
A. Kroshnick, Editor-in-Chief 911

- Methotrexate: The Emerging Drug of
Choice for Serious Rheumatoid Arthritis
R.H. Salach and J.M. Cash 912

CLINICAL STUDIES

- Steady-State Pharmacokinetics of
Enteric-Coated Naproxen Tablets
Compared with Standard Naproxen
Tablets
D. Jung and K.E. Schwartz 923

- Vaginal Retention of 2% Butoconazole
Nitrate Cream: Comparison of a
Standard and a Sustained-Release
Preparation
L. Weinstein et al. 930

- The Efficacy of Two Doses of
Omeprazole for Short- and Long-Term
Peptic Ulcer Treatment in the Elderly
A. Pilotto et al. 935

- Efficacy and Safety of Benazepril Plus
Hydrochlorothiazide Versus Benazepril
Alone in Hypertensive Patients
Unresponsive to Benazepril
Monotherapy
K. Holwerda et al. 942

- Effect of Insulin-Glipizide Combination
on Skeletal Muscle Capillary Basement
Membrane Width in Diabetic Patients
R.A. Camerini-Davalos et al. 952

- Effect of Perindopril on 24-Hour Blood
Pressure Levels and Hemodynamic
Responses to Physical and Mental
Stress in Elderly Hypertensive Patients
I. Kuwajima et al. 962

- Loperamide Oxide in the Treatment of
Acute Diarrhea in Adults
A. Dettmer 972

- Effect of Arotinolol on Insulin Sensitivity
in Obese Hypertensive Patients
S. Kageyama et al. 981

- Effect of Intravenous Administration of
EM523L on Gastric Emptying and
Plasma Glucose Levels After a Meal in
Patients with Diabetic Gastroparesis: A
Pilot Study
T. Nakamura et al. 989

- Membranous Glomerulonephritis in
Patients with Rheumatoid Arthritis
A. Yoshida et al. 1000

- Use of the C64 Quantitative Tuning
Fork and the Effect of Niceritrol in
Diabetic Neuropathy
N. Hotta et al. 1007

- Experimental Study on Bacterial
Colonization of Fibrin Glue and Its
Prevention
K. Tanemoto and H. Fujinami 1016

- Effect of Interferon Therapy in a Patient
with Chronic Active Hepatitis Type C
Associated with Interstitial Pneumonia
and Rheumatoid Arthritis: A Case
Report
T. Kurihara et al. 1028

PHARMACEUTICAL ECONOMICS & HEALTH POLICY

- Editorial Comment
D.A. Sclar, Section Editor 1036

- A Literature Review Comparing the
Economic, Clinical, and Humanistic
Attributes of Dihydroergotamine
and Sumatriptan
C.M. Kozma et al. 1037

- Cost-Effectiveness Analysis of
Lipid-Modifying Therapy in Canada:
Comparison of HMG-CoA Reductase
Inhibitors in the Primary Prevention

- of Coronary Heart Disease
L.L. Martens and R. Guibert 1052

- Health Economics and Outcomes
Research with Retrospective Data
W.R. Simons and M.E. Smith 1063

- Rate of Exposure to Theophylline-Drug
Interactions
S. Pashko et al. 1068

- Subject Index 1078

- Author Index 1082



Excerpta Medica, Inc.

DRL EXHIBIT 1018 PAGE 1

Clinical Therapeutics®

EDITORIAL

Group Editor: Keyo S. Ross (908) 874-0548
Managing Editor: Lisa Kasarda
Administrative Coordinator: Jean A. Bidilikian

ART

Senior Art Director: Jennifer L. Kmenta
Art Director: Mark Thomas

QUALITY CONTROL

Director: Jim Adamczyk
Proofreader: Theresa Salerno

PRODUCTION AND MANUFACTURING

Director, Manufacturing Operations: Frank A. Lake
Production Supervisor: Jacqueline M. Master (908) 281-3648
Production Manager/Reprints: Kelley Moore

CIRCULATION

Group Circulation Director: Robert W. De Angelis
Circulation Director: Georgann Carter
Circulation Assistant: Michele Biscardi
Reprints/Permissions Manager: Beatrix Valles
(800) 722-3422, (908) 281-3694
FAX (908) 874-7089

PUBLISHING STAFF

Vice President/Group Publisher:
Kenneth F. Senerth
Publisher: Stan Heimberger, Ph.D.
(908) 874-8550

Excerpta Medica, Inc., a Reed Elsevier Medical Publishing company

President: Ronald H. Schlosser
Vice President and Treasurer: Robert F. Issler
Vice President, Secretary, and General Counsel: Louis J. Andreozzi
Business Manager: Luis O. Portero
105 Raider Boulevard
Belle Mead, NJ 08502-1510

Trademarks: *Clinical Therapeutics®* is a registered trademark of Excerpta Medica, Inc.

Publisher: *Clinical Therapeutics®* (ISSN 0149-2918) (GST #128741063) is published bimonthly by Excerpta Medica, Inc., a Reed Elsevier Medical Publishing company, with business offices at 105 Raider Boulevard, Belle Mead, New Jersey 08502-1510, telephone (908)874-8550, fax (908)874-0700.

Copyright: Copyright 1994 by Excerpta Medica, Inc. All rights reserved under the United States, International and Pan-American Copyright Conventions. No part of this publication may be reproduced, stored in a retrieval system, or transmitted in any form or by any means, mechanical, computer, photocopying, electronic recording or otherwise, without the prior written permission of Excerpta Medica, Inc. The copyright law of the United States (Title 17, U.S.C., as amended) governs the making of photocopies or other reproductions of copyrighted material.

Photocopy Permissions Policy: This publication has been registered with Copyright Clearance Center, Inc. (CCC), 222 Rosewood Drive, Danvers, Massachusetts 01923, telephone (508)750-8400. Permission is granted for the photocopying of specified articles provided that the base fee is paid directly to CCC (ref. *Clinical Therapeutics®* ISSN 0149-2918, specifying volume, number, date and title of article). This consent does not extend to other kinds of copying, such as for general distribution, resale, advertising, and promotional purposes, or for creating new collective works.

Opinions: Opinions expressed in articles are those of the authors and do not necessarily reflect those of Excerpta Medica, Inc. or the Editorial Board. Excerpta Medica, Inc. assumes no liability for any material published herein.

Reprints: Contact Beatrix Valles, telephone (800)722-3422 or (908)281-3694, fax (908)874-7089.

Subscriptions: Subscriptions are U.S. \$78 (\$12 additional for orders outside the U.S.). Single copies and back issues are U.S. \$15. Circulation records are maintained at P.O. Box 3000, Denville, NJ 07834-3000.

Send address changes to: *Clinical Therapeutics®*, P.O. Box 3000, Denville, NJ 07834-3000.

Manuscripts: Submit manuscripts to *Clinical Therapeutics®*, 105 Raider Boulevard, Belle Mead, NJ 08502.

Postmaster: Send address corrections to *Clinical Therapeutics®*, P.O. Box 3000, Denville, NJ 07834-3000.

Steady-State Pharmacokinetics of Enteric-Coated Naproxen Tablets Compared with Standard Naproxen Tablets

Donald Jung, PhD, and Kenneth E. Schwartz, MD

Syntex Research, Palo Alto, California

ABSTRACT

In this open-label, randomized, cross-over study, 24 healthy volunteers (12 men and 12 women) received either enteric-coated (EC) naproxen tablets 500 mg twice daily or standard naproxen tablets 500 mg twice daily for 7 days. In each of the two study periods, blood sampling began on day 8, after one last dose of the study drug was administered, to determine and compare steady-state pharmacokinetics for each of the two naproxen formulations. The plasma half-life of naproxen averaged 16.3 and 16.9 hours following EC naproxen and standard naproxen treatments, respectively. Mean time to maximum plasma concentration (T_{max}) was greater for EC naproxen than for standard naproxen (4.0 vs 1.9 hours), while the maximum observed plasma concentration (C_{max}) was slightly, but not significantly, smaller (94.9 vs 97.4 $\mu\text{g/mL}$, respectively). The mean values for average

plasma concentration (C_{ave}) and minimum plasma concentration for EC naproxen were 70.4 and 60.6 $\mu\text{g/mL}$, respectively, compared with 63.9 and 44.1 $\mu\text{g/mL}$ for standard naproxen. The mean plasma fluctuation about the mean was greater for standard naproxen than for EC naproxen (85.3% vs 49.3%), while the mean area under the plasma concentration-time curve (AUC) was smaller for standard naproxen (766.8 vs 845.0 $\mu\text{g} \times \text{h/mL}$). At steady state, EC naproxen was similar to standard naproxen tablets with respect to C_{max} , C_{ave} , $C_{max}:C_{ave}$, 0- to 12-hour AUC, and half-life but differed in T_{max} . In addition, fluctuations about C_{ave} in plasma levels were considerably lower with EC naproxen than with standard naproxen.

INTRODUCTION

Naproxen is a nonsteroidal anti-inflammatory drug with analgesic and antipy-

retic properties. The efficacy and tolerability of naproxen in the management of rheumatoid diseases, gout, pain, and dysmenorrhea have been well established in many years of clinical use.¹ An enteric-coated (EC) formulation* of naproxen was developed to release naproxen at the pH level of the small intestine, where dissolution takes place.

An *in vivo* evaluation of EC naproxen tablets has shown that the naproxen blood levels over time were consistent with the delayed release of naproxen from the tablets,² but no data comparing the steady-state pharmacokinetics of EC naproxen with standard naproxen have been published. The current study was designed to compare the steady-state pharmacokinetics of EC naproxen and standard tablets† in a group of healthy men and women.

SUBJECTS AND METHODS

This was an open-label, randomized study of crossover design. Twenty-four healthy men and women whose body weights were within 15% of the average weight for their age and height, as determined from the Metropolitan Life Insurance tables, participated in the study.³ Participants were selected on the basis of an essentially problem-free medical history, a normal physical examination, and a routine laboratory test profile showing no clinically significant abnormalities. Institutional review board approval was obtained. The study was explained to

subjects in nontechnical terms, and all subjects signed a written informed consent form and an Experimental Subjects Bill of Rights before participating.

The two study regimens were: 500-mg EC naproxen tablets twice daily for 7 days plus one dose on day 8, and 500-mg standard naproxen tablets twice daily for 7 days plus one dose on day 8.

After an overnight fast (beginning at 9:30 PM the previous night), each subject received, in random order, 500 mg twice daily EC naproxen or standard naproxen for 7 days and a final dose on day 8. Adverse events were monitored at each blood drawing, and the subjects informed the study physician or trained observer of any adverse events that occurred during the study. A washout period of 8 days followed each treatment. Serial blood samples were collected after the final morning dose for up to 72 hours. To determine naproxen trough levels, single blood samples were also collected on days 6 and 7 before the morning dose. The plasma from each blood sample was separated immediately, transferred into vials, and frozen for subsequent assay of naproxen by using high-performance liquid chromatography.⁴ Plasma levels below the quantification limit of 0.5 µg/mL naproxen at time zero were set to zero for the calculation of mean plasma levels and computed variables.

Statistical and Pharmacokinetic Analyses

The following pharmacokinetic variables were determined on day 8:

- T_{\max} —time to maximum plasma concentration;
- Plasma half-life—computed over the 24- to 72-hour interval by using log

Trademarks: EC-Naprosyn®* and Naprosyn®† (Syn-
tex Laboratories, Inc., Palo Alto, California).

Table I. Demographic characteristics.

Variable	Men (n = 12)	Women (n = 12)
Age (y)		
Mean \pm SD	29.8 \pm 4.6	30.9 \pm 7.1
Range	22–35	22–47
Body weight (kg)		
Mean \pm SD	82 \pm 11	64 \pm 6
Range	64–94	55–75
Height (cm)		
Mean \pm SD	184 \pm 6	168 \pm 6
Range	175–193	157–176

linear regression analysis of the plasma concentration versus time data;

- C_{\max} —maximum observed plasma concentration;

- 0- to 12-hour AUC—area under the plasma concentration-time curve from 0 to 12 hours, computed using the linear trapezoidal rule;

- C_{ave} —average plasma concentration computed as the ratio of AUC divided by the dosing interval (12 hours);

- C_{low} —minimum (trough) plasma concentration at time of dosing computed as the mean of the zero and 24-hour values;

- $C_{\max}:C_{\text{low}}$ —peak to trough plasma ratio;

- $C_{\max}:C_{\text{ave}}$ —peak to average plasma concentration ratio;

- Fluctuation— $100 \times (C_{\max} - C_{\min})/C_{\text{ave}}$ (ie, percent fluctuation about average plasma concentration).

An analysis of variance (ANOVA) model appropriate for a crossover design was used,⁵ and the statistical analyses were performed for the pharmacokinetic variables according to the General Linear Model procedure of the Statistical Analysis System, Version 5.16.⁶ The ANOVA model included

terms for sequence, subjects within sequence, formulation, and period effects.

Ninety percent classic confidence intervals⁷ for the ratio of EC naproxen to standard naproxen were obtained using the *t* distribution. Confidence limits (90%) on the difference in the regimen means were computed using an error term derived from ANOVA. These limits were then expressed as percentages of the reference mean by dividing the upper and lower limits of the confidence interval by the estimated reference mean and then adding 100%. Two regimens were considered equivalent with respect to a given variable if the two means differed by less than 20% or the confidence interval was within 80% to 120%, with 90% confidence.

In addition, the trough levels on days 6, 7, and 8 were compared to demonstrate that steady-state levels had been attained by day 8. ANOVA procedures with terms in the model for subject and day were used for this comparison.

RESULTS

The demographic characteristics (Table I) were calculated separately for the 12

men and 12 women in the study. All subjects completed the study normally. Adverse events were reported by 9 (37.5%) of 24 subjects. Headaches and gastrointestinal complaints were the most frequently reported adverse events. With the standard naproxen tablet regimen, headaches and stomachaches occurred in three subjects and dyspepsia in one. With the EC naproxen regimen, headaches occurred in three subjects, but there were no gastrointestinal complaints. Most events associated with the two naproxen regimens were classified by the investigator as probably not related to the study medication, and none were clinically serious. Concomitant medications taken during the study were not considered likely to affect the conduct or outcome of the

study. Laboratory tests and physical examinations revealed no clinically significant abnormalities.

Statistically significant ($P < 0.05$) differences in trough concentrations between days were observed for the naproxen standard tablets; there were no statistically significant time (day) effects for the EC naproxen tablets (Table II). The mean trough levels for the standard naproxen tablet were 46.0, 49.9, and 45.9 $\mu\text{g/mL}$ for days 6, 7, and 8, respectively. The significant difference was owing to a higher naproxen concentration on day 7 than that on days 6 and 8. The ratios and confidence limits (90%) were calculated for the ratios of days 6 and 7 to day 8 for each formulation and are shown in Table II. Although significant day ef-

Table II. Naproxen trough plasma concentrations ($\mu\text{g/mL}$) and steady-state comparisons.

				Ratio		
	Day 6	Day 7	Day 8	Day 6:8	Day 7:8	<i>P</i> [*]
EC Naproxen						
Mean	73.4	76.8	68.5			0.244
SD	18.8	23.3	21.1			
C _{var}	25.7	30.4	30.8			
Minimum	46.1	20.7	29.0			
Maximum	120.4	123.1	115.2			
Ratio (%)				107	112	
CI [†]				95–119	100–124	
Standard Naproxen						
Mean	46.0	49.9	45.9			0.020
SD	9.0	11.9	9.4			
C _{var}	19.5	23.8	20.6			
Minimum	27.8	26.7	26.6			
Maximum	64.1	77.6	65.4			
Ratio (%)				100	109	
CI [†]				95–106	103–114	

EC = enteric-coated; C_{var} = coefficient of variation; CI = confidence interval.

* P value is for day effect (analysis of variance model has terms for subject and day).

†90% CI (limits in %).

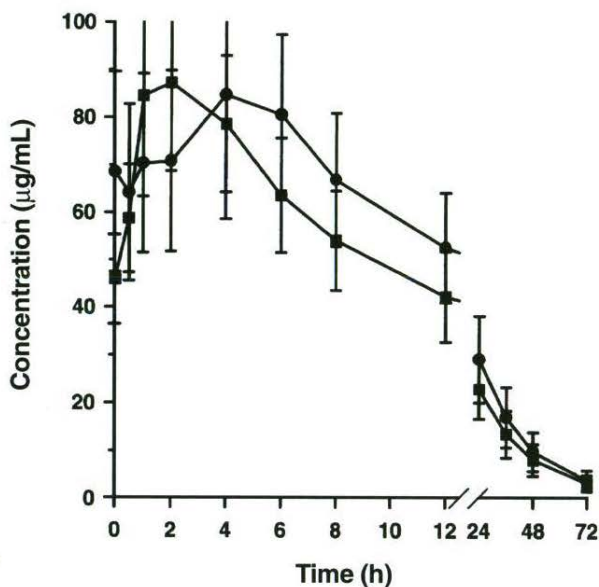


Figure 1. Mean naproxen plasma concentrations at steady state (day 8) over time following oral administration of standard naproxen (■) and enteric-coated (EC) naproxen (●).

fects were observed for the standard tablet, steady state appears to have been reached by day 6.

The mean plasma profiles of naproxen at steady state (day 8) after oral administration of standard naproxen and EC naproxen in the fasting state are plotted in Figure 1. Figure 2 compares the two formulations with respect to 12-hour AUCs for each subject.

Table III summarizes the computed variables at steady-state levels (day 8). The plasma half-life averaged 16.3 hours after EC naproxen administration and 16.9 hours after standard naproxen. Mean T_{max} was greater for EC naproxen than standard naproxen (4.0 vs 1.9 hours), while C_{max} was slightly but not significantly smaller (94.9 vs 97.4 µg/mL, respectively). The mean C_{ave} and C_{low} for EC naproxen were 70.4 and 60.6 µg/mL,

compared with 63.9 and 44.1 µg/mL for standard naproxen. The mean plasma fluctuation about the mean was greater for standard naproxen than for EC naproxen (85.3% vs 49.3%), while the mean AUC was smaller (766.8 vs 845.0 µg × h/mL).

Table III also shows the ratios of the various mean computed variables (EC naproxen:standard naproxen) and the 90% confidence intervals for the difference in means, expressed as percentages. Based on the 80%:120% rule for bioequivalence, EC naproxen was bioequivalent to standard naproxen with respect to half-life, C_{max} , C_{ave} , $C_{max}:C_{ave}$, and 0- to 12-hour AUC. The limits for the other computed pharmacokinetic parameters (T_{max} , C_{low} , $C_{max}:C_{low}$, and percent fluctuation) were not contained within the 80% to 120% interval.

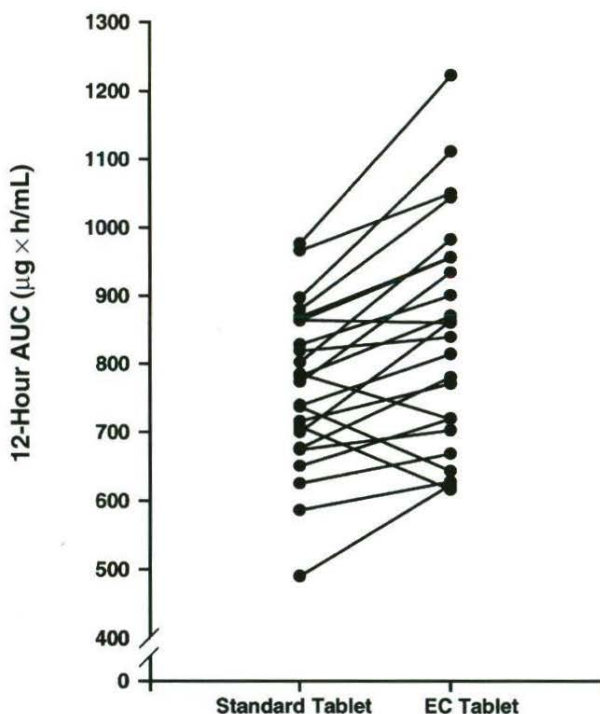


Figure 2. Twelve-hour area under the plasma concentration-time curve (AUC) values at steady state (day 8) for each subject, after administration of a standard naproxen tablet and after an enteric-coated (EC) naproxen tablet.

Table III. Pharmacokinetic variables (mean \pm SD), ratios, and confidence intervals.

Variables	EC Naproxen (A)	Standard Naproxen (B)	Ratio A:B (%)	90% CI for the Ratio (%)
Half-life (h)	16.3 \pm 2.3	16.9 \pm 2.3	96.1	93.4–98.7
T _{max} (h)	4.0 \pm 1.6	1.9 \pm 1.2	210.9	181.5–240.2
C _{max} (µg/mL)	94.9 \pm 17.5	97.4 \pm 12.4	97.4	92.9–101.9
C _{ave} (µg/mL)	70.4 \pm 13.8	63.9 \pm 9.9	110.2	106.1–114.3
C _{low} (µg/mL)	60.6 \pm 14.8	44.1 \pm 9.2	137.3	130.1–144.5
C _{max} :C _{low}	1.6 \pm 0.4	2.3 \pm 0.4	71.4	66.2–76.6
C _{max} :C _{ave}	1.3 \pm 0.1	1.5 \pm 0.2	88.0	84.9–91.2
Fluctuation (%)	49.3 \pm 21.1	85.3 \pm 19.3	57.7	50.3–65.2
AUC _{0–12} (µg \times h/mL)	845.0 \pm 166.2	766.8 \pm 118.4	110.2	106.1–114.3

EC = enteric-coated; CI = confidence interval; T_{max} = time to maximum plasma concentration; C_{max} = maximum observed plasma concentration; C_{ave} = average plasma concentration; C_{low} = minimum plasma concentration; AUC_{0–12} = area under the plasma concentration-time curve from 0 to 12 hours.

DISCUSSION

The EC formulation of naproxen dissolves at pH levels of 5.5 or greater and releases active drug primarily within the small intestine.² Although the standard tablet formulation is well tolerated, it is anticipated that an EC formulation may be preferred by some patients. The current study was designed to compare the steady-state pharmacokinetics of EC naproxen and standard tablets in a group of healthy men and women.

At steady state, trough plasma naproxen concentrations were significantly higher for the EC formulation. T_{max} was doubled for the EC preparation, but the maximum and average plasma naproxen concentrations and AUC values were similar.

The results of this study suggest that EC naproxen is most appropriate for the treatment of chronic pain and inflammation, rather than the initial treatment of acute pain. The efficacy of EC naproxen would be similar to that of the standard naproxen formulation based on a similar steady-state bioavailability between the two formulations. The most common side effects were headache and gastrointestinal complaints.

CONCLUSION

In the current steady-state study, EC naproxen was similar to standard naproxen tablets with respect to C_{max} , C_{ave} , $C_{max}:C_{ave}$, 0- to 12-hour AUC, and half-life, but differed in T_{max} . In addition, the fluctuation in plasma levels

about C_{ave} was smaller with EC naproxen than with standard naproxen.

Address correspondence to: Donald Jung, PhD, Syntex Research, 3401 Hillview Avenue, P.O. Box 10850, Palo Alto, CA 94303.

REFERENCES

1. Todd PA, Clissold SP. Naproxen—a reappraisal of its pharmacology and therapeutic use in rheumatoid diseases and pain states. *Drugs*. 1990;40:91-137.
2. Wilding IR, Hardy JG, Sparrow RA, et al. In vivo evaluation of enteric-coated naproxen tablets using gamma scintigraphy. *Pharm Res*. 1992;9:1436-1441.
3. *Statistical Bulletin*. New York: Metropolitan Life Foundation; 1983;64(1):1-9.
4. Syntex Research, Department of Analytical and Metabolic Chemistry. *Determination of Naproxen in Human Plasma by High Performance Liquid Chromatography*. AMC Method Report #040, unpublished. Palo Alto, Calif: Syntex, 1982.
5. Winer BJ. *Statistical Principles in Experimental Design*. New York: McGraw-Hill; 1971.
6. Barr AJ, Goodnight JH, Sall JP, et al. *SAS Users' Guide*. Raleigh, NC: SAS Institute, Inc; 1979.
7. Schuirman DJ. A comparison of the two one-sided tests procedure and the power approach for assessing the equivalence of average bioavailability. *J Pharmacokinetic Biopharm*. 1987;15:657-680.