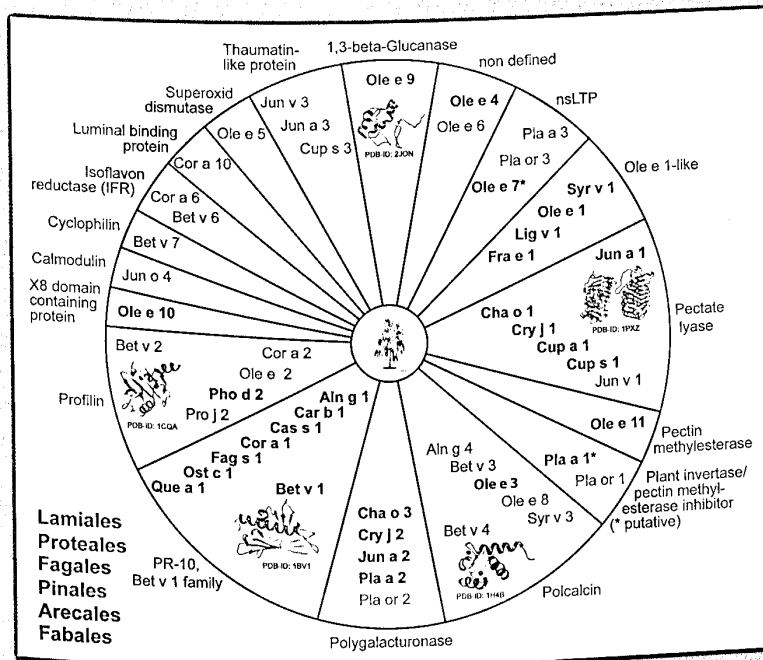


Allergy

EUROPEAN JOURNAL OF ALLERGY
AND CLINICAL IMMUNOLOGY



Molecular characterization of tree pollen allergens

Editors in Chief: Thomas Bieber and Hans-Uwe Simon



PROPERTY OF THE
NATIONAL
LIBRARY OF
MEDICINE

WILEY
Blackwell

Official Journal of the European Academy
of Allergy and Clinical Immunology



This material was copied
at the NLM and may be
Subject US Copyright Laws

EDITORS IN CHIEF

Professor Thomas Bieber
Department of Dermatology and Allergy
University of Bonn
Sigmund Freud Str. 25
53105 Bonn
Germany

Tel.: + 49 228 2871 4388
E-mail: Thomas.Bieber@ukb.uni-bonn.de

Professor Hans-Uwe Simon
Institute of Pharmacology
University of Bern
Inselspital, INO-F
CH-3010 Bern
Switzerland

Tel.: + 41 31 632 3281
E-mail: hus@pki.unibe.ch

ASSOCIATE EDITORS

Werner Aberer, Austria
Reto Cramer, Switzerland
Pascal Demoly, France
Wytke J. Fokkens, the Netherlands
Angela Haczku, USA
Antonella Muraro, Italy
Bodo Niggemann, Germany
Douglas S. Robinson, UK
Marek Sanak, Poland
De Yun Wang, Singapore
Michael Wechsler, USA
Stephan Weidinger, Germany

EDITORIAL BOARD

Rob Aalberse, the Netherlands
Mübecell Akdis, Switzerland
Alaina J. Ammit, Australia
Andreas Bircher, Switzerland
Jochen Brasch, Germany
Paulo Camargos, Brazil
Sang-Heon Cho, Korea
Loren Denlinger, USA
Jessy Deshane, USA
Kees van Drunen, the Netherlands
Philippe Eigenmann, Switzerland
Thomas Elwegger, Austria
Thomas Frischer, Austria
Johannes Geier, Germany
Hans Grönlund, Sweden
Stephan von Gunten, Switzerland
Susanne Halken, Denmark
Karin Hartmann, Germany
Liam G. Heaney, UK
Peter Hellings, Belgium
John Holloway, UK
Alison Humbles, USA
Alan D. Irvine, Ireland
Michael Kabesch, Germany
Harsha Kariyawasam, UK
Thomas Kaufmann, Switzerland
Gerard Koppelman, the Netherlands
Susanne Lau, Germany
Zheng Liu, China

Axel Lorentz, Germany
Marcus Maurer, Germany
Martin Mempel, Germany
Gunnar Nilsson, Sweden
Nathalia Novak, Germany
Kimihiro Okubo, Japan
Liam O'Mahony, Switzerland
Oscar Palomares, Spain
Gianni Passalacqua, Italy
Susan Prescott, Australia
Benjamin Raby, USA
Claudio Rhyner, Switzerland
Graham Roberts, UK
Michaela Schedel, USA
Jochen Schmitt, Germany
Jürgen Schwarze, UK
Dagmar Simon, Switzerland
François Spertini, Switzerland
Jordi Sunyer, Spain
Bernard Thong, Singapore
Sanna Toppila-Salmi, Finland
Maria Torres, Spain
Thomas Werfel, Germany
Andreas Wollenberg, Germany

BIostatisticians

Philippe Bousquet, France
Manuel Ferreira, Australia

Aims and Scope

The aim of the journal is to promote and maintain contact between basic and clinical allergy and immunology. Allergy is an international journal with contributors and readers in all countries. Articles are accepted purely on the basis of quality. The journal publishes original articles, reviews, position papers, and brief communications. Original articles of special interest are accompanied by editorial comments. Correspondence to recently published work is also considered.

Information for subscribers

Allergy is published in 12 issues per year. Institutional subscription prices for 2015 are: Print & Online: US\$2357 (US), US\$2748 (Rest of World), €1785 (Europe), £1404 (UK). Prices are exclusive of tax. Asia-Pacific GST, Canadian GST/HST and European VAT will be applied at the appropriate rates. For more information on current tax rates, please go to www.wileyonlinelibrary.com/tax-vat. The price includes online access to the current and all online back files to January 1st 2011, where available. For other pricing options, including access information and terms and conditions, please visit www.wileyonlinelibrary.com/access.

Delivery Terms and Legal Title: Where the subscription price includes print issues and delivery is to the recipient's address, delivery terms are Delivered at Place (DAP); the recipient is responsible for paying any import duty or taxes. Title to all issues transfers FOB our shipping point, freight prepaid. We will endeavour to fulfil claims for missing or damaged copies within six months of publication, within our reasonable discretion and subject to availability.

Journal Customer Services: For ordering information, claims and any enquiry concerning your journal subscription please go to www.wileycustomerhelp.com/ask or contact your nearest office:

Americas: Email: cs-journals@wiley.com; Tel: +1 781 388 8598 or 1 800 835 6770 (Toll free in the USA & Canada).

Europe, Middle East and Africa: Email: cs-journals@wiley.com; Tel: +44 (0) 1865 778315.

Asia Pacific: Email: cs-journals@wiley.com; Tel: +65 6511 8000.

Japan: For Japanese speaking support, Email: cs-japan@wiley.com; Tel: +65 6511 8010 or Tel (toll-free): 005 316 50 480.

Visit our Online Customer Help available in 7 languages at www.wileycustomerhelp.com/ask

Back issues: Single issues from current and recent volumes are available at the current single issue price from cs-journals@wiley.com. Earlier issues may be obtained from Periodicals Service Company, 11 Main Street, Germantown, NY 12526, USA. Tel: +1 518 537 4700, Fax: +1 518 537 5899, Email: psc@periodicals.com

Production Editor: Emily Sanchez (email: all@wiley.com).

Copyright and copying

Copyright © 2015 John Wiley & Sons A/S. Published by John Wiley & Sons Ltd. All rights reserved. No part of this publication may be reproduced, stored or transmitted in any form or by any means without the prior permission in writing from the copyright holder. Authorization to copy items for internal and personal use is granted by the copyright holder for libraries and other users registered with their local Reproduction

Rights Organisation (RRO), e.g. Copyright Clearance Center (CCC), 222 Rosewood Drive, Danvers, MA 01923, USA (www.copyright.com), provided the appropriate fee is paid directly to the RRO. This consent does not extend to other kinds of copying such as copying for general distribution, for advertising or promotional purposes, for creating new collective works or for resale. Special requests should be addressed to permissions@wiley.com.

ALLERGY, (ISSN 0105-4538), is published monthly. US mailing agent: Mercury Media Processing, LLC, 1850 Elizabeth Avenue, Suite #C, Rahway, NJ 07065 USA. Periodical postage paid at Rahway, NJ.

Postmaster: Send all address changes to ALLERGY, John Wiley & Sons Inc., C/O The Sheridan Press, PO Box 465, Hanover, PA 17331.

Disclaimer: The Publisher, the European Academy of Allergy and Clinical Immunology and Editors cannot be held responsible for errors or any consequences arising from the use of information contained in this journal; the views and opinions expressed do not necessarily reflect those of the Publisher, the European Academy of Allergy and Clinical Immunology and Editors, neither does the publication of advertisements constitute any endorsement by the Publisher, the European Academy of Allergy and Clinical Immunology and Editors of the products advertised.

Allergy is published by John Wiley & Sons Ltd, PO Box 1354, 9600 Garsington Road, Oxford OX4 2XG, UK.

View this journal online at wileyonlinelibrary.com/journal/all.

Allergy accepts articles for Open Access publication. Please see <http://olabout.wiley.com/WileyCDA/Section/id-406241.html> for further information about OnlineOpen.

ISSN 0105-4538 [Print] ISSN 1398-9995 [Online]

Access to this journal is available free online within institutions in the developing world through the HINARI initiative with the WHO. For information, visit www.healthinternetwork.org

Allergy is indexed by Biological Abstracts/BIOSIS, Chemical Abstracts, Current Contents: Clinical Medicine, Elsevier BIOBASE/Current Awareness in Biological Sciences, EMBASE, Index Medicus/MEDLINE, Science Citation Index.

Wiley's Corporate Citizenship initiative seeks to address the environmental, social, economic, and ethical challenges faced in our business and which are important to our diverse stakeholder groups. Since launching the initiative, we have focused on sharing our content with those in need, enhancing community philanthropy, reducing our carbon impact, creating global guidelines and best practices for paper use, establishing a vendor code of ethics, and engaging our colleagues and other stakeholders in our efforts. Follow our progress at www.wiley.com/go/citizenship.

For submission instructions, subscription and all other information visit: onlinelibrary.wiley.com/journal/10.1111/ISSN1398-9995

Printed in Singapore by C.O.S. Printers Pte Ltd.

The cover image depicts: Molecular characterization of tree pollen allergens. From Asam C, Hofer H, Wolf M, Aglas L, Wallner M. Tree pollen allergens—an update from a molecular perspective. Allergy 2015; 70: 1201–1211.

This material was copied
at the NLM and may be
Subject US Copyright Laws

CONTENTS

Volume 70 • Number 10 • October 2015

NEWS AND COMMENTARIES

1193 **Consensus communication on early peanut introduction and the prevention of peanut allergy in high-risk infants**

primaryContributors: D. M. Fleischer, S. Sicherer, M. Greenhawt, D. Campbell, E. Chan, A. Muraro, S. Halcken, Y. Katz, M. Ebisawa, L. Eichen, H. Sampson, H. Sampson, G. Lack, G. Du Toit, G. Roberts, H. Bahnson, M. Feeney, J. Hourihane, J. Spergel, M. Young, A. As'aad, K. Allen, S. Prescott, S. Kapur, H. Saito, I. Agache, C. A. Akdis, H. Arshad, K. Beyer, A. Dubois, P. Eigenmann, M. Fernandez-Rivas, K. Grimshaw, K. Hoffman-Sommergruber, A. Host, S. Lau, L. O'Mahony, C. Mills, N. Papadopoulos, C. Venter, N. Agmon-Levin, A. Kessel, R. Antaya, B. Drolet and L. Rosenwasser

REVIEW ARTICLES

1196 **Angioedema induced by cardiovascular drugs: new players join old friends**

M. Bas, J. Greve, U. Strassen, F. Khosravani, T. K. Hoffmann and G. Kojda

1201 **Tree pollen—allergens an update from a molecular perspective**

C. Asam, H. Hofer, M. Wolf, L. Aglas and M. Wallner

POSITION PAPER

1212 **Pathophysiological mechanisms of exercise-induced anaphylaxis: an EAACI position statement**

L. Ansley, M. Bonini, L. Delgado, S. Del Giacco, G. Du Toit, M. Khaitov, M. Kurowski, J. H. Hull, A. Moreira and P. J. Robson-Ansley

ORIGINAL ARTICLES

Experimental Allergy And Immunology

1222 **Poor association of allergen-specific antibody, T- and B-cell responses revealed with recombinant allergens and a CFSE dilution-based assay**

J. Eckl-Dorna, R. Campana, R. Valenta and V. Niederberger

1230 **Urinary 11 β -PGF2 α and N-methyl histamine correlate with bone marrow biopsy findings in mast cell disorders**

R. Divekar and J. Butterfield

1239 **Ara h 2 and Ara 6 are the best predictors of severe peanut allergy: a double-blind placebo-controlled study**

A. K. Kukkonen, A. S. Pelkonen, S. Mäkinen-Kiljunen, H. Voutilainen and M. J. Mäkelä

1246 **Allergic sensitization is associated with inadequate antioxidant responses in mice and men**

L. Utsch, C. Folisi, J. H. Akkerdaas, A. Logiantara, M. A. Van De Pol, J. S. Van Der Zee, E. J. M. Krop, R. Lutter, R. Van Ree and L. S. Van Rijt

1259 **MPLA shows attenuated pro-inflammatory properties and diminished capacity to activate mast cells in comparison with LPS**

S. Schülke, A. Flaczyk, L. Vogel, N. Gaudenzio, I. Angers, B. Löschner, S. Wolfheimer, I. Spreitzer, S. Qureshi, M. Tsai, S. Galli, S. Vieths and S. Scheurer

1269 **Intrinsic properties of germinal center-derived B cells promote their enhanced class switching to IgE**

F. Ramadani, N. Upton, P. Hobson, Y.-C. Chan, D. Mzinza, H. Bowen, C. Kerridge, B. J. Sutton, D. Thirumangalakudi and H. J. Gould

This article has been
indexed at the NLM and may be
Subject US Copyright Laws

1278 Farm exposures are associated with lower percentage of circulating myeloid dendritic cell subtype 2 at age 6

M.- V. Martikainen, H. Kääriö, A. Karvonen, P. C. Schröder, H. Renz, V. Kaulek, J.- C. Dalphin, E. Von Mutius, B. Schaub, J. Pekkanen, M.- R. Hirvonen and M. Roponen

Epidemiology And Genetics

1288 Childhood asthma is associated with mutations and gene expression differences of *ORMDL* genes that can interact

A. A. Toncheva, D. P. Potaczek, M. Schedel, S. W. Gersting, S. Michel, N. Krajnov, V. D. Gaertner, J. M. Klingbeil, T. Illig, A. Franke, C. Winkler, J. M. Hohlfeld, C. Vogelberg, A. Von berg, A. Bufe, A. Heinzmann, O. Laub, E. Rietschel, B. Simma, J. Genuneit, A. C. Muntau and M. Kabesch

1300 Association between adult atopic dermatitis, cardiovascular disease, and increased heart attacks in three population-based studies

J. I. Silverberg

Airway Diseases

1309 eQTL of bronchial epithelial cells and bronchial alveolar lavage deciphers GWAS-identified asthma genes

X. Li, A. T. Hastie, G. A. Hawkins, W. C. Moore, E. J. Ampleford, J. Milosevic, H. Li, W. W. Busse, S. C. Erzurum, N. Kaminski, S. E. Wenzel, D. A. Meyers and E. R. Bleeker

Immunodeficiencies

1319 Phase II study results of a replacement therapy for hereditary angioedema with subcutaneous C1-inhibitor concentrate

B. L. Zuraw, M. Cicardi, H. J. Longhurst, J. A. Bernstein, H. H. Li, M. Magerl, I. Martinez-Saguer, S. M. M. Rehman, P. Staubach, H. Feuersenger, R. Parasrampur, J. Sidhu, J. Edelman and T. Craig

**BRIEF
COMMUNICATIONS**

1329 Diagnostic test allergens used for *in vivo* diagnosis of allergic diseases are at risk: a European Perspective

L. Klimek, H. J. Hoffmann, H. Renz, P. Demoly, T. Werfel, P. M. Matricardi, A. Muraro, P. Schmid-Grendelmeier, V. Cardona and N. G. Papadopoulos

1332 Diagnostic use of recombinant Tha p 2 in the allergy to *Thaumatococcus panyocarpa*

A. I. Rodríguez-Mahillo, N. Carballeda-Sangiao, J. M. Vega, J. C. García-Ortiz, A. Roques, I. Moneo and M. González-Muñoz

1336 T helper 2 response in allergic bronchopulmonary aspergillosis is not driven by specific *Aspergillus* antigens

H. Jolink, R. de Boer, L. N. A. Willems, J. T. van Dissel, J. H. F. Falkenburg and M. H. M. Heemskerk

1340 Bee venom enhances the differentiation of human regulatory T cells

I. Caramalho, A. Melo, E. Pedro, M. M. P. Barbosa, R. M. M. Victorino, M. C. Pereira Santos and A. E. Sousa

1346 Prevalence of celiac disease in patients with severe food allergy

R. Pillon, F. Ziberna, L. Badina, A. Ventura, G. Longo, S. Quaglia, L. De Leo, S. Vatta, S. Martellosi, G. Patano, T. Not and I. Berti

CORRESPONDENCE

1350 The influence of childhood traffic-related air pollution exposure on asthma, allergy and sensitization

E. Fuertes and J. Heinrich

1352 Reply

This material was copied
at the NLM and may be
Subject US Copyright Laws

Phase II study results of a replacement therapy for hereditary angioedema with subcutaneous C1-inhibitor concentrate

B. L. Zuraw¹, M. Cicardi², H. J. Longhurst³, J. A. Bernstein⁴, H. H. Li⁵, M. Magerl⁶, I. Martinez-Saguer⁷, S. M. M. Rehman⁸, P. Staubach⁹, H. Feuersenger¹⁰, R. Parasrampur¹¹, J. Sidhu¹², J. Edelman¹¹ & T. Craig¹³

¹Department of Medicine, University of California, San Diego, La Jolla, CA, USA; ²Department of Internal Medicine, Università degli Studi di Milano, Ospedale L. Sacco, Milan, Italy; ³Department of Immunology, Barts Health NHS Trust, London, UK; ⁴Department of Immunology/Allergy, University of Cincinnati College of Medicine, Cincinnati, OH; ⁵Institute for Asthma and Allergy, Chevy Chase, MD, USA; ⁶Charité, Universitätsmedizin Berlin, Berlin; ⁷HZRM Haemophilia Centre Rhine Main, Mörfelden-Walldorf, Germany; ⁸Toledo Institute Asthma and Allergy Center, Toledo, OH, USA; ⁹University Medical Center, Mainz; ¹⁰CSL Behring GmbH, Marburg, Germany; ¹¹CSL Behring, King of Prussia, PA, USA; ¹²CSL Limited, Parkville, Vic., Australia; ¹³Departments of Medicine and Pediatrics, Penn State University, Hershey, PA, USA

To cite this article: Zuraw BL, Cicardi M, Longhurst HJ, Bernstein JA, Li HH, Magerl M, Martinez-Saguer I, Rehman SMM, Staubach P, Feuersenger H, Parasrampur R, Sidhu J, Edelman J, Craig T. Phase II study results of a replacement therapy for hereditary angioedema with subcutaneous C1-inhibitor concentrate. *Allergy* 2015; **70**: 1319–1328.

Keywords

Beriner; C1-esterase inhibitor; hereditary angioedema; long-term prophylaxis; subcutaneous treatment.

Correspondence

Bruce L. Zuraw, MD, Department of Medicine, University of California, San Diego, 9500 Gilman Dr., Mail Code 0732, La Jolla, CA 92093-0732, USA.
Tel.: +1 858 822 6597
Fax: +1 858 642 3791
E-mail: bzuraw@ucsd.edu

ClinicalTrials.gov identifier: NCT01576523.

Accepted for publication 22 May 2015

DOI:10.1111/all.12658

Edited by: Werner Aberer

Abstract

Background: Hereditary angioedema (HAE) due to C1 inhibitor deficiency manifests as recurrent swelling attacks that can be disabling and sometimes fatal. Long-term prophylaxis with twice-weekly intravenous injections of plasma-derived C1-inhibitor (pdC1-INH) has been established as an effective treatment. Subcutaneous (SC) administration of pdC1-INH has not been studied in patients with HAE.

Methods: This open-label, dose-ranging, crossover study (COMPACT Phase II) was conducted in 18 patients with type I or II HAE who received two of twice-weekly 1500, 3000, or 6000 IU SC doses of highly concentrated volume-reduced CSL830 for 4 weeks each. The mean trough plasma levels of C1-INH functional activity, C1-INH and C4 antigen levels during Week 4, and overall safety and tolerability were evaluated. The primary outcome was model-derived steady-state trough C1-INH functional activity.

Results: After SC CSL830 administration, a dose-dependent increase in trough functional C1-INH activity was observed. C1-INH and C4 levels both increased. The two highest dose groups (3000 and 6000 IU) achieved constant C1-INH activity levels above 40% values, a threshold that was assumed to provide clinical protection against angioedema attacks. Compared with intravenous injection, pdC1-INH SC injection with CSL830 showed a lower peak-to-trough ratio and more consistent exposures. All doses were well tolerated. Mild-to-moderate local site reactions were noted with pain and swelling being the most common adverse event.

Conclusions: Subcutaneous volume-reduced CSL830 was well tolerated and led to a dose-dependent increase in physiologically relevant functional C1-INH plasma levels. A clinical outcome study of SC CSL830 in patients with HAE warrants further investigation.

Abbreviations

AE, adverse event; AUC_(0–t), area under the plasma concentration–time curve over a dosing interval; C1-INH, C1-inhibitor; C_{av}, average C1-INH functional activity over dosing interval; CI, confidence interval; CL, clearance; CL_{ss}, steady-state clearance; C_{max}, maximum drug concentration in plasma; CSL830, volume-reduced C1-INH concentrate; F, bioavailability; HAE, hereditary angioedema due to C1 inhibitor deficiency; IU, international unit; IV, intravenous; K_a, absorption rate constant; kDa, kiloDalton; pd, plasma-derived; PD, pharmacodynamic; PK, pharmacokinetic; pnf, pasteurized, nanofiltered; SC, subcutaneous; SD, standard deviation; t_{1/2}, half-life; TEAE, treatment-emergent adverse event; U, unit; V, volume of distribution; V_{ss}, steady-state volume of distribution; WT, body weight.

Hereditary angioedema (HAE) is a rare autosomal dominant disease caused by C1 inhibitor deficiency and is associated with significant morbidity and mortality (1–4), which has been substantially reduced with the advent of effective on-demand therapies (5). However, patients continue to have impaired quality of life and in some cases require hospitalization for angioedema attacks. To minimize the number and severity of attacks, many patients choose to use prophylactic treatment.

Consensus guidelines conclude that long-term prophylaxis is appropriate for HAE patients with frequent attacks or who do not achieve sufficient benefit from on-demand treatment (4, 6–11). Before 2009, the most commonly utilized prophylactic drugs were anabolic androgens and to a lesser extent antifibrinolytics. Subsequently, long-term prophylaxis with C1 inhibitor concentrates (C1-INH) has become available and found to be safe and effective (12). The concept of routine prophylaxis with continuous intravenous C1-INH is based on correcting the deficiency of C1-INH activity, the fundamental abnormality in HAE. The efficacy of this approach was shown in two placebo-controlled studies; the efficacy of a vapor-heated C1-INH concentrate (25 U/kg body weight) was established for long-term prophylaxis in patients who did not respond adequately to androgens or antifibrinolytics (13), and the C1-INH concentrate (Cinryze, 1000 IU twice a week) demonstrated a reduction in the number of HAE attacks (12). However, none of the previous studies on C1-INH replacement therapy were specifically designed to achieve a constant level of biologically relevant activity C1-INH levels. Thus, most patients on intravenous C1-INH long-term prophylaxis continue to experience breakthrough attacks, likely related to the relatively short period of time that functional C1-INH plasma levels remain near the normal range (13).

Theoretically, maintaining plasma C1-INH functional levels above a certain threshold should prevent all attacks. However, this threshold value has not yet been defined. Hereditary angioedema is diagnosed based on functional C1-INH levels <50% of normal, but patients typically have C1-INH functional levels <40% of normal (14, 15). Enhanced activation of the complement system has been observed with C1-INH functional levels <38% of normal, suggesting a critical threshold of C1-INH function (16). Logistical and technical problems of repeated intravenous (IV) injections and the pharmacokinetic (PK) profile make it challenging to maintain the C1-INH level above a threshold value.

Subcutaneous (SC) administration of C1-INH offers several potential advantages including easier access for self-administration and more consistent PKs. The feasibility of SC administration of an IV C1-INH concentrate (1000 IU in 20 ml) was previously demonstrated in a pilot study in patients with HAE (17). Herein, the PK, pharmacodynamic (PD), and preliminary safety of an investigational, volume-reduced C1-INH concentrate (CSL830; CSL Behring, Marburg, Germany) developed for SC injection is reported.

Methods

Study medication

CSL830 is a volume-reduced formulation of the pasteurized, nanofiltered C1-INH concentrate (pnf C1-INH; Berinert[®],

Marburg, Germany). The manufacturing process of CSL830 is almost identical to that of pnf C1-INH, the major difference being the concentration after reconstitution. The final concentration of CSL830 is 500 IU/ml, whereas the final concentration of Berinert is 50 IU/ml.

Study design

This was a prospective, multicenter, open-label, crossover phase II study to characterize the PKs, PDs, and safety of CSL830 administered subcutaneously to 18 subjects with HAE (COMPACT phase II study). The study period spanned April 2012 to December 2012. Data were collected at three sites in Germany and five in the USA. For organizational details of the study setup, please refer to the Appendix S1.

Following a screening period of up to 30 days, subjects were sequentially allocated to one of six CSL830 treatment sequences by predetermined computer-generated assignment (Fig. 1A). A single dose of Berinert 20 U/kg was administered IV 2–7 days prior to the first CSL830 dosing period. Each subject received two of three possible CSL830 doses (1500, 3000, or 6000 IU administered as a short SC injection twice-weekly) for two 4-week treatment periods with a wash-out period of up to 4 weeks between periods. Administration of rescue medication (IV C1-INH) was permitted for breakthrough attacks.

The study protocol and all amendments were approved by the independent ethics committees of the participating sites. The study was carried out in accordance with the principles of the current International Conference on Harmonization Good Clinical Practice.

Study population

Male or female subjects aged ≥18 with HAE with type I or type II HAE, based on clinical history and confirmed by central laboratory testing at screening (C1-INH functional activity <50% or a C1-INH antigen level below the laboratory reference range), were eligible for the study. Subjects were required to have a body weight ≥50 and ≤110 kg at screening and have experienced ≤5 HAE attacks within the 3 months prior to the screening visit, of which ≤1 occurred within 30 days prior to the screening visit. The relatively low attack rate for the inclusion criteria was chosen to minimize the need for rescue therapy with C1-INH concentrate which would interfere with the PK measurements.

Key exclusion criteria included current C1-INH prophylactic therapy, androgen therapy within 30 days of screening, and any HAE-specific treatment within 7 days of screening (for full inclusion and exclusion criteria, see Appendix S1).

Endpoints

The primary endpoint was the mean trough C1-INH functional activity at the fourth week, based on modeling and simulation. Model-derived rather than observed trough levels were chosen to account for the confounding nature of possible rescue IV C1-INH use during the study.

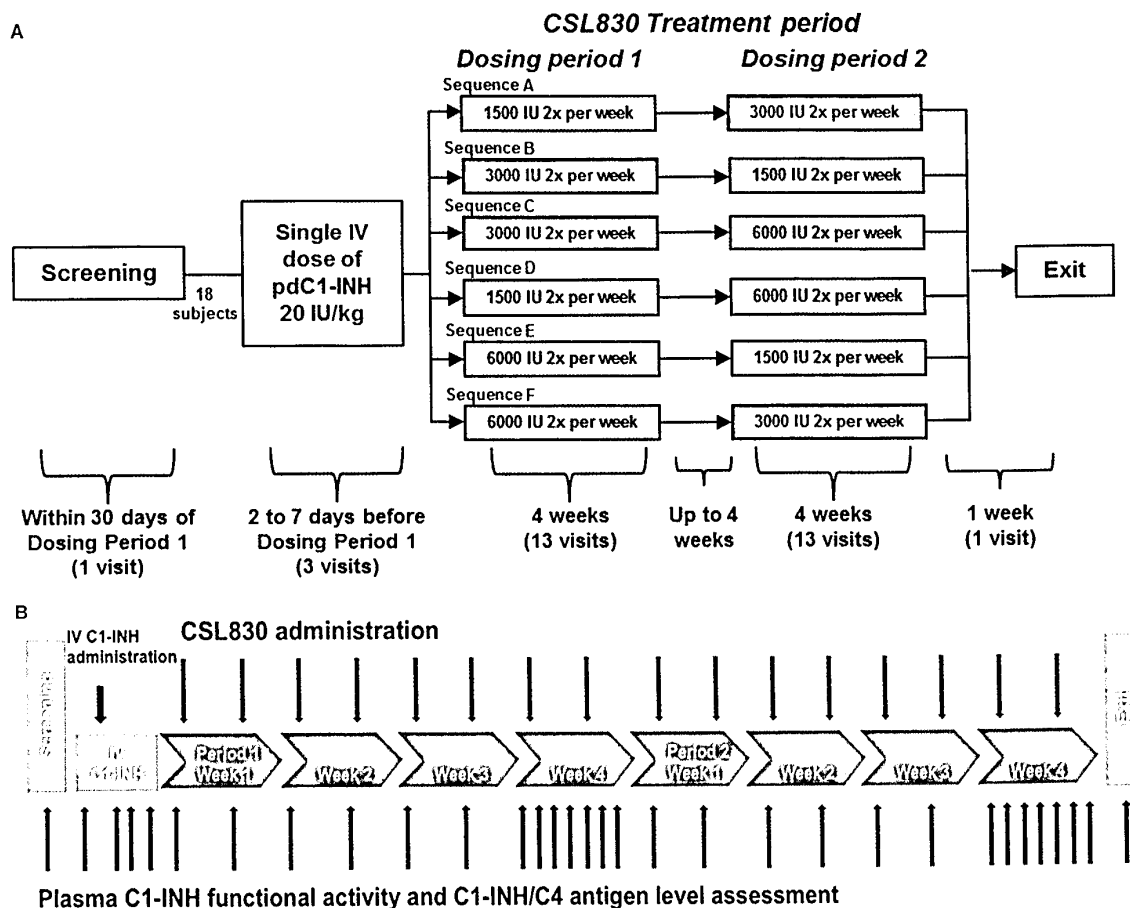


Figure 1 Study schema. (A) Dosing scheme and sample collection during the study, (B) ↓ = single dose of IV C1-INH; ↑ = single dose of subcutaneous (SC) CSL830; ↑ = assessment of C1-INH func-

tional activity and plasma C1-INH and C4 antigen concentrations; ↑ = additional assessments of plasma C1-INH functional activity.

The secondary endpoints were the mean and mean change from baseline in trough C1-INH functional activity, C1-INH antigen level, and C4 antigen levels at the fourth week of each dosing regimen, based on observed data.

The dosing scheme and sample collection is illustrated in Fig. 1B. The initial single IV dose of C1-INH was administered to aid the PK model in accounting for any administration of IV C1-INH rescue doses and to enable a within-study estimate of bioavailability of SC CSL830. C1-INH functional activity, C1-INH plasma concentrations, and C4 antigen levels were assessed at several time points throughout each dosing period. Plasma C1-INH functional activity was additionally assessed immediately before CSL830 administration.

PK and PD measurements

Plasma C1-INH functional activity was assessed by a validated chromogenic assay (Berichrom C1-Inhibitor, Siemens;

reference range: 70–130% of norm). Plasma C1-INH antigen (C1 reagent N-Antisera; Siemens Healthcare Diagnostics (Eschbom, Germany); reference range: 0.18–0.32 mg/l) and C4 antigen levels were assessed by nephelometry (C4 reagent, Beckman Coulter (Krefeld, Germany); reference range: 0.1–0.4 g/l). All measurements were performed at a central laboratory using a validated assay (CSL Behring GmbH).

C4 antigen levels were defined as a PD parameter as C4 activity occurs downstream from C1-INH; C1-INH replacement would therefore affect C4 levels. Levels of C4 antigen have been shown to rise slowly over time following IV pdC1-INH administration.

PK and PD analysis

The complete analysis set (18 patients who received ≥1 dose of CSL830 and provided ≥1 C1-INH functional measurement) was used for the primary endpoint analysis and to determine modeling-derived C1-INH functional activity.

Twelve subjects per dosing regimen were sufficient to provide an estimate of C1-INH activity, based on PK modeling of previous study results. The data for each treatment were summarized using descriptive statistics and a mixed model.

Subcutaneous and IV C1-INH functional activity data were collectively subjected to a population-based approach using nonlinear mixed-effects modeling (NONMEM version 7.2). Exploratory PK characteristics of CSL830 were assessed by estimating typical and individual values for parameters such as clearance (CL) and volume of distribution (V) along with associated interindividual variability. The influence of subject baseline characteristics was also investigated. Pharmacokinetic parameters such as CL, V , bioavailability (F), absorption rate constant (K_a), half-life ($t_{1/2}$), and incremental recovery were estimated with the final population PK model.

Pharmacokinetic simulations were conducted to examine whether steady-state trough levels of C1-INH functional activity were dependent on body weight. The body weight effect was evaluated by examining the distributions of model-predicted steady-state trough serum C1-INH functional activity at doses of 40 and 60 IU/kg and fixed doses of 3000 and 4500 IU, for baseline body weight ranges of <60, 60–100, and >100 kg. For the as-observed endpoint analysis, the fourth-week trough levels and increase in trough levels from baseline were summarized for C1-INH functional activity, C1-INH antigen levels, and C4 antigen levels for each CSL830 dosing regimen using descriptive statistics.

Safety assessment

Safety and tolerability were evaluated by continuous observation of adverse events (AEs) and by safety assessments that were conducted at specified times throughout the study. These assessments included infusion site tolerability, laboratory parameters, vital signs, body weight, physical examination, and concomitant medication usage. Local side-effects (pain, swelling, bruising, and itching at the injection site) were assessed by the investigator and intensity graded from mild (grade 1: present, but no interference with activity) to severe (grade 3: prevents daily activity and/or requires use of pain relievers). A risk assessment for deep vein thrombosis was also implemented based on earlier case reports on side-effects of thromboembolism in patients with HAE using C1-INH concentrate (18, 19).

Results

Study subjects

A total of 22 subjects from eight study sites signed the informed consent. Of these, 18 patients were assigned to treatment by a computer-generated list and received study drug. Four subjects signed the consent form but were not randomized, two because they did not meet the inclusion/exclusion criteria and two because the study had already reached the target of 18 subjects by the time they were found to be eligible. The demographics of the subjects are summarized in Table 1.

PK results after SC CSL830

The mean as-observed steady-state trough C1-INH functional activity at the fourth week increased with CSL830 dose (Fig. 2); increase from baseline was 16.4%, 33.2%, and 63.3% for the 1500, 3000, and 6000 IU doses, respectively. C1-INH antigen levels also increased with CSL830 dose; increase from baseline in C1-INH antigen at the fourth week was 0.02, 0.05, and 0.14 mg/ml for the three dosing regimens, respectively.

Population PK model

C1-INH functional activity was described by a linear one-compartmental PK model with first-order absorption. The relationships between model parameters and the following baseline covariates were examined: age, gender, body weight, body mass index, ideal body weight, lean body mass, creatinine CL, and C1-INH functional activity. The only statistically significant covariate effect on a model parameter identified was the effect of body weight on CL and V , which was described by the following relationships:

$$CL_i = 0.398 \cdot \left(\frac{WT_i(\text{kg})}{78.9(\text{kg})} \right)^{0.879} \cdot \exp^{\eta_{CL}},$$

$$V_i = 30.8 \cdot \left(\frac{WT_i(\text{kg})}{78.9(\text{kg})} \right)^{0.669} \cdot \exp^{\eta_V},$$

where CL_i is the individual value of clearance; V_i , the individual volume of distribution; and WT_i , the body weight of subject i .

Goodness-of-fit plots of the model (Fig. 3) reveal that the model prediction was consistent with the observed data, as the points are uniformly distributed around the line of identity. Therefore, no systematic bias was evident.

Model-derived C1-INH trough levels and PK parameters

The primary endpoint was the mean trough C1-INH functional level at the fourth week, based on modeling and simulation (Fig. 2). A dose-dependent increase in mean C1-INH functional activity was observed, increasing from 14.6% at baseline to 31.7%, 44.3%, and 80.5% for the 1500, 3000, and 6000 IU doses, respectively. The modeled steady-state trough C1-INH functional activity at the fourth week was similar to the as-observed C1-INH functional activity.

The model was also used to derive other exploratory PK parameters such as area under the activity–time curve from zero to end of dosing interval at steady state ($AUC_{(0-\infty)}$), maximum plasma C1-INH functional activity levels (C_{max}), average plasma activity at steady state (C_{avg}), incremental recovery, and elimination half-life. Table 2 summarizes the modeled PK parameters for functional C1-INH activity following IV and SC C1-INH administration. The bioavailability of SC CSL830 was 44%, with similar elimination half-life compared with IV C1-INH. As the CSL830 doses used were not weight based, body weight, body mass index, and ideal

Table 1 Demographic and baseline characteristics (complete analysis set)

Demographic characteristics	Dosing regimen			
	Berinert (N = 18)	CSL830 1500 IU (N = 12)	CSL830 3000 IU (N = 12)	CSL830 6000 IU (N = 12)
Age, years				
Mean (SD)	36.4 (13.07)	33.6 (11.83)	37.8 (14.69)	37.8 (12.65)
Median (min, max)	33.9 (19, 69)	30.3 (19, 53)	36.9 (19, 69)	35.2 (24, 69)
Sex, male : female, n (%)	7 : 11 (38.9 : 61.1)	4 : 8 (33.3 : 67.7)	5 : 7 (41.7 : 58.3)	5 : 7 (41.7 : 58.3)
Weight, kg				
Mean (SD)	80.0 (20.2)	79.9 (23.4)	78.5 (17.0)	81.6 (20.6)
Median (min, max)	78.9 (51.0, 110.0)	71.2 (51.0, 110.0)	78.9 (57.6, 106.5)	83.3 (51.0, 110.0)
Body mass index, kg/m ²				
Mean (SD)	27.3 (6.57)	27.5 (7.22)	26.8 (5.14)	27.6 (7.37)
Median (min, max)	25.4 (18.1, 40.9)	25.4 (18.1, 40.9)	25.4 (19.1, 34.5)	27.5 (18.1, 40.9)
HAE type, n (%)				
Type I	16 (88.9)	12 (100)	10 (83.3)	10 (83.3)
Type II	2 (11.1)	0 (0)	2 (16.7)	2 (16.7)
Number of HAE attacks in the preceding 3 months, n				
Mean (SD)	2.5 (1.42)	2.3 (1.50)	2.4 (1.51)	2.8 (1.29)
Median (min, max)	2.0 (0, 5)	2.0 (0, 5)	2.0 (0, 5)	2.0 (1, 5)
Baseline as-observed C1-INH functional activity, %				
Mean (SD)	14.6 (8.02)	15.4 (8.02)	11.3 (7.10)	17.1 (8.05)
Median (min, max)	15.2 (1.3, 26.7)	15.2 (4.3, 26.7)	9.9 (1.3, 22.7)	19.3 (1.3, 26.7)
Baseline as-observed C1 antigen level (mg/ml)*				
n	13	8	9	9
Mean (SD)	0.10 (0.126)	0.05 (0.009)	0.12 (0.149)	0.12 (0.147)
Median (min, max)	0.050 (0.02, 0.44)	0.047 (0.03, 0.05)	0.050 (0.02, 0.44)	0.053 (0.02, 0.44)
Baseline as-observed C4 antigen level (mg/dl)*				
n	17	12	11	11
Mean (SD)	8.6 (9.51)	6.8 (3.10)	9.2 (11.7)	9.9 (11.7)
Median (min, max)	7.0 (2.2, 43.8)	6.9 (2.2, 10.8)	7.0 (2.2, 43.8)	7.0 (2.4, 43.8)

HAE, hereditary angioedema.

*In some patients, the values for baseline as-observed C1 and C4 antigen were below the limits of detection of 0.022 mg/ml and 1.67 mg/dl, respectively. Complete analysis set: 18 patients who received ≥ 1 dose of CSL830 and provided ≥ 1 C1-INH functional measurement.

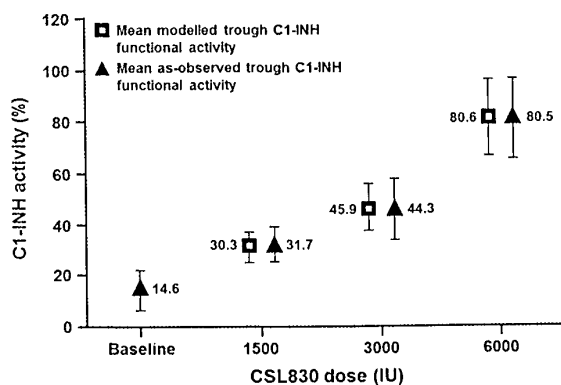


Figure 2 Pharmacokinetic (PK) results. Modeled steady-state trough C1-INH functional activity (primary endpoint; red rectangles) and as-observed C1-INH functional activity (black triangles). Data points show the mean and 95% CI.

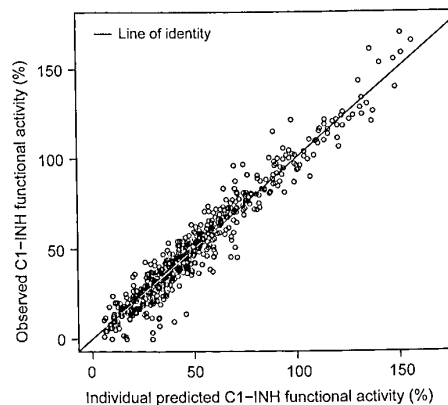


Figure 3 Final population pharmacokinetic (PK) model of as-observed C1-INH functional activity vs individual predictions of C1-INH functional activity. The line of identity (solid red) is included as a reference.

Table 2 Modeled pharmacokinetic parameters for C1-INH activity

	Berinert 20 IU/kg (N = 18)	CSL830 1500 IU (N = 12)	CSL830 3000 IU (N = 12)	CSL830 6000 IU (N = 12)
C_{max} , U/ml	0.67 (0.562)	0.38 (0.109)	0.59 (0.154)	1.09 (0.307)
$AUC_{(0-\infty)}$, U h/ml	38.9 (8.93)	30.5 (11.31)	45.3 (11.98)	79.6 (25.36)
C_{av} , U/ml	—	0.36 (0.135)	0.54 (0.142)	0.95 (0.303)
Incremental recovery ([U/ml]/[U/kg])	0.026 (0.0023)	0.011 (0.0024)	0.011 (0.0024)	0.012 (0.0027)
$t_{1/2}$ (h)	52.8 (13.70)	50.6 (12.35)	51.5 (13.52)	56.2 (15.02)
Dose independent (n = 18)				
CL_{SS} , l/h			0.043 (0.015)	
V_{SS} , l			3.06 (0.598)	
Bioavailability			0.44	

$AUC_{(0-\infty)}$, area under the plasma concentration–time curve over a dosing interval; C_{av} , average C1-INH functional activity over a dosing interval; $t_{1/2}$, elimination half-life; C_{max} , maximum drug concentration in plasma; CL_{SS} , steady-state clearance; V_{SS} , steady-state volume of distribution.

Data are mean (SD).

body weight were assessed to determine their influence on median functional C1-INH levels. Not unexpectedly, we found a small negative relationship between body weight and steady-state trough levels for each dose regimen. Patients with a low body weight administered a fixed dose are predicted to achieve a relatively high functional C1-INH level compared with patients with a higher body weight. Therefore, a body weight-adjusted dosing is predicted to achieve the same level of activity across the range of body weights (see Fig. S1).

Pharmacodynamics

C4 antigen levels were also measured during the fourth week of each dose regimen. C4 antigen levels increased in a dose-dependent manner and normalized with all doses of CSL830. C4 levels of 11.1, 14.1, and 18.4 mg/dl for the 1500, 3000, and 6000 IU doses of CSL830, respectively, were observed. C4 antigen levels increased from baseline at the fourth week by 4.3, 5.6, and 9.1 mg/dl (normal level is 14 mg/dl) for the 1500, 3000, and 6000 IU doses, respectively.

When the fixed dose of CSL830 was calculated as a dose per body weight, the mean C4 antigen level increased with the dose per body weight; the mean as-observed C4 antigen level at the fourth week was 11.3, 11.7, 18.0, and 18.2 mg/ml in the ≤ 20 , >20 to ≤ 45 , >45 to ≤ 90 , and >90 IU/kg categories, respectively.

Modeled twice-per-week CSL830 vs IV pdC1-INH over 4 weeks

The effect of dosing SC CSL830 vs IV 1000 IU pdC1-INH concentrate on C1-INH functional activity was examined in a *post hoc* analysis by simulating three different SC regimens of 1500, 3000, and 6000 IU twice-weekly for 4 weeks (Fig. 4). The simulated C1-INH functional activity time profiles showed a lower peak-to-trough ratio and more consistent exposures after SC administration compared with the

current standard prophylactic treatment regimen of a twice-weekly injection of 1000 IU pdC1-INH concentrate.

Safety

There were no CSL830-related serious AEs or deaths, or withdrawals due to AEs throughout the study. No thromboembolic events were observed. Two serious AEs unrelated to CSL830 were reported, an episode of transient syncope 2 days after IV pdC1-INH administration in a 23-year-old woman and hypovolemic shock in a 27-year-old woman on the first dosing day of CSL830 during an abdominal attack that started before study drug administration. Laboratory surveillance did not reveal any safety signals, and there was no evidence of inhibitory auto-antibody development.

Adverse events are summarized in Table 3. The most common treatment-emergent adverse events were local site reactions reported as pain, swelling, bruising, and itching at the injection sites.

Most local site reactions were mild-to-moderate in intensity and resolved within 3 days. Moderate swellings at the injection site was reported in more subjects in the 6000 IU dose group (5/12 subjects) compared with the two other lower dose groups (2/12 in the 1500 IU and 1/12 in the 3000 IU dose group), which were likely related to the volume of injection. There was no apparent dose relationship for other local site reactions.

Hereditary angioedema-related symptoms occurring during the study were reported as AEs. Overall, 29 HAE-related AEs were reported in seven patients during the course of the study. Of those 29 HAE events occurring after study enrollment, 11 were reported during the 4-week dosing intervals with SC CSL830 and 18 HAE events were reported during times in the study with no exposure to the investigational drug. In the 1500 IU dose group, two of 12 patients had two and five HAE attacks, respectively. In the 3000 IU dose group, two patients had one and three attacks, respectively. No patient in the 6000 IU dose group experienced any HAE symptoms during the 4-week SC dosing period.

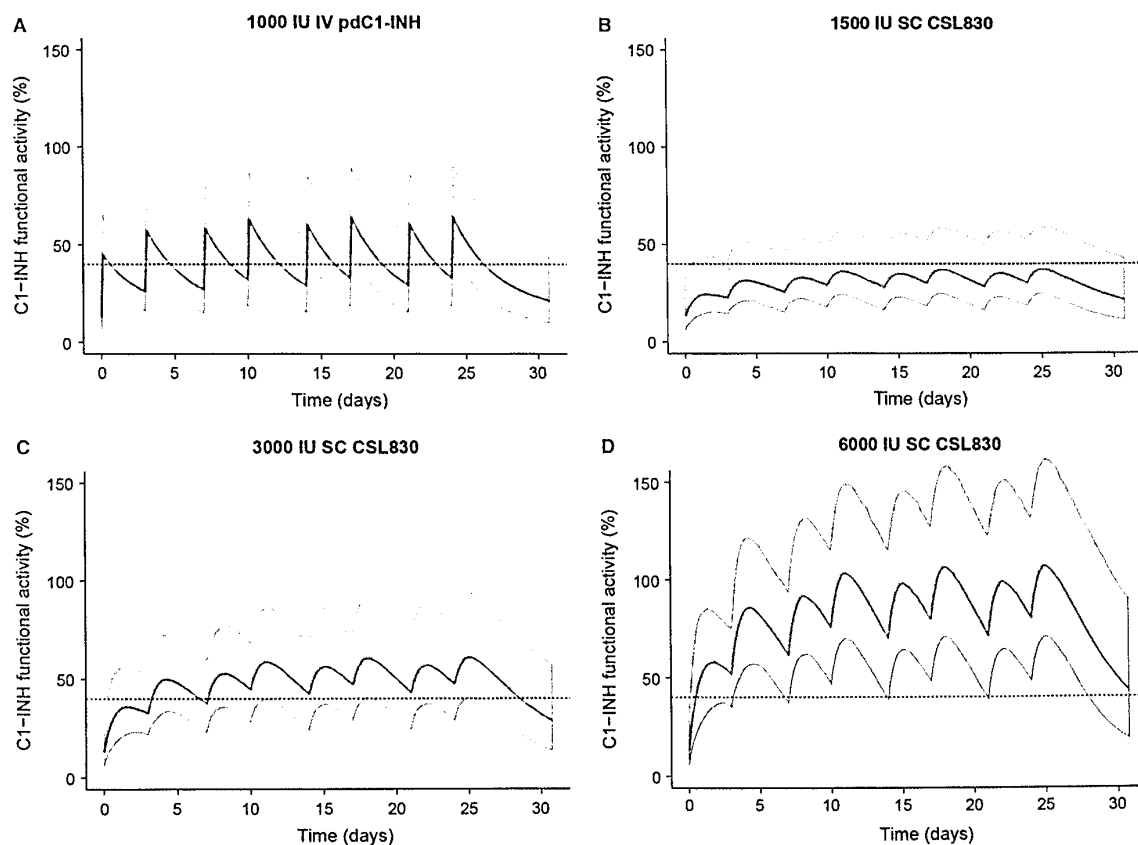


Figure 4 Modeled biweekly C1-INH functional activity after IV administration of (A) a therapeutic dose of 1000 IU pdC1-INH concentrate, or subcutaneous (SC) administration of (B) 1500 IU, (C) 3000 IU, or (D) 6000 IU of CSL830. Median functional activity (solid lines), 5th and 95th percentiles (shaded areas) and 40% C1-INH functional activity (dashed black line) are shown.

Table 3 Treatment-emergent adverse events (TEAEs) by dose group

	Dosing regimen			
	All treated subjects (N = 18)	CSL830 1500 IU (N = 12)	CSL830 3000 IU (N = 12)	CSL830 6000 IU (N = 12)
Subjects who reported any CSL830 TEAE, n (%)	17 (94.4)	10 (83.3)	8 (66.7)	9 (75.0)
Maximum reported event intensity of severe, n (%)	5 (27.8)	3 (25.0)	1 (8.3)	1 (8.3)
Maximum reported event intensity of moderate, n (%)	8 (44.4)	5 (41.7)	4 (33.3)	5 (41.7)
Assessed by investigator as related to CSL830, n (%)	6 (33.3)	5 (41.7)	1 (8.3)	2 (16.7)
Subjects with solicited local site reactions, n (%)	17 (94.4)	11 (91.7)	8 (66.7)	11 (91.7)
Pain	14 (82.4)	9 (72.7)	8 (100.0)	7 (63.6)
Swelling	14 (82.4)	8 (72.7)	7 (87.5)	9 (81.8)
Bruising	7 (41.2)	5 (45.5)	1 (12.5)	4 (36.4)
Itching	2 (11.8)	2 (18.2)	0 (0.0)	0 (0.0)

Discussion

Long-term prophylaxis of HAE aims to prevent or minimize the number and severity of angioedema attacks; however, the medications currently available for long-term prophylaxis are

in many cases suboptimal. Oral antifibrinolytics requiring multiple daily doses are relatively ineffective and frequently associated with significant side-effects (20, 21). Anabolic androgens are convenient to take and often effective at doses <200 mg/day but can be associated with significant risk of

serious side-effects (22–25). Currently available formulations of pdC1-INH require IV access, imposing a burden on the patient or healthcare provider. Maintenance of IV access has required many patients to have ports implanted, which are associated with increased risks of infection and thrombosis (18, 19). Plasma levels of functional C1-INH fall rapidly following IV administration of therapeutic dosages of C1-INH concentrates, reaching near basal levels within 3 days (13). The failure to achieve therapeutic steady-state functional C1-INH levels during pdC1-INH prophylaxis may explain the occurrence of breakthrough attacks for many patients. Replacement of pdC1-INH subcutaneously may potentially address the above limitations.

Based on earlier observations, it was suggested (16) that C1-INH antigen levels above 0.075 g/l, approximately 40% of the plasma level in a healthy person, would have a clinically meaningful effect in preventing HAE attacks. The C1-INH concentrations below 0.075 g/l found in blood samples analyzed after an attack and the increase in frequency of attacks when C1-INH levels were below 0.035 g/l (18% of normal) support this suggestion.

Our study demonstrates that SC CSL830 administered twice-weekly for 4 weeks leads to a dose-dependent increase in functional C1-INH activity and C4 levels, with the 3000 and 6000 IU doses achieving constant C1-INH activity levels above 40%. C1-INH functional levels approached the range of normal C1-INH values of healthy subjects with the 6000 IU dose.

Compared with a standard IV prophylactic dose regimen of 1000 IU twice-weekly, our PK model predicted C1-INH functional activity time profiles with a considerably lower peak-to-trough ratio and more consistent exposures after SC administration. The lower peak-to-trough fluctuations are the expected consequence of SC dosing.

The size of a protein transported within the body, whether via the capillaries or lymphatics, affects its bioavailability. The 105 kDa C1-INH protein is taken up by the lymphatics (26, 27). The 44% bioavailability of SC CSL830 was similar to that observed in a pilot study using the IV pdC1-INH concentrate, Berinert (17). Reasons for the relatively low bioavailability could be attributed, in part, to degradation or consumption at the injection site or during lymphatic transport. It is known that C1-INH can be metabolized quickly in patients with C1-INH deficiency, as evidenced by reduced serum concentrations of 5–31% in patients with type I HAE; this is in contrast to most other inherited plasma protein deficiencies in which heterozygous carriers have 50% of normal protein levels (27, 28). In addition, the half-life of exogenous C1-INH has been shown to be influenced by the severity of HAE as well as by whether the assessment was made in patients during an attack or not (17).

Overall, CSL830 was well tolerated, with no serious drug-related AEs. The most common AEs were mild-to-moderate local site reactions. Although this study was not designed to test efficacy, a trend of fewer HAE attacks occurring with the 3000 and 6000 IU doses was observed compared with the 1500 IU dose and the treatment-free period. A placebo-con-

trolled study would be required to ascertain whether this effect was significant; however, the possibility that an efficacy signal in this preliminary study was observed is encouraging.

In conclusion, C1-INH replacement through repeated SC dosing of a volume-reduced C1-INH concentrate (CSL830) led to a predictable dose-dependent increase in functional C1-INH levels in patients with mild-to-moderate HAE. Furthermore, consistent and sustained steady-state C1-INH levels reached values that are predicted to be efficacious in preventing angioedema attacks. Subcutaneous CSL830 also appears to be safe and well tolerated. These results support the pursuit of studies to address the safety and efficacy of SC C1-INH for long-term prophylaxis in HAE patients with severe disease.

Acknowledgments

We acknowledge administrative and technical support by Dr Jonathan Viney of Apotecom Scopemedical Ltd, funded by CSL Behring.

Funding

Authors other than those listed as employees of CSL Behring served as investigators in this study, which was funded by CSL Behring. In addition, they either entered consultancy with or have been involved in educational programs and their organization had direct funding from, have been speakers for, or have had consultation agreements with one or more of the following companies: CSL Behring, Dyax, Pharming, ViroPharma, Shire, BioCryst.

Conflicts of interest

BZ: Research funding: Shire; Consultant: CSL Behring, Dyax, Isis, BioCryst; Speaker: Dyax, RMEI. MC: Consultant for CSL Behring, Viropharma, Dyax, SOBI, Pharming, BioCryst, Sigma Tau; Research/educational grant from Shire, CSL Behring. HL: Educational grants, Speaker, donations to her departmental fund, clinical trial investigator: Biocryst, CSL Behring, SOBI Biovitrum, Shire, Dyax, ViroPharma. JAB: Principal Investigator, Consultant, Speaker: Viropharma, CSL Behring, Dyax, and Shire; Editorial Board: Journal of Angioedema; Medical Advisory Board: HAEA organization. HH Li: Research grant support, Speaker, Consultant: CSL Behring, Dyax, GLG Pharma, Shire, Pharming NV, ViroPharma; member of the HAEA medical advisory board. MM: Consultant: Shire, Viropharma, CSL Behring, and Sobi. IMS: Research funding, Consultant, Speaker: CSL Behring, Shire, and ViroPharma. SMMR: Clinical trial investigator, Consultant: Shire, CSL Behring, Viropharma. PS: Clinical trial investigator: Shire, CSL Behring; Consultant: CSL Behring. HF, RP, JS and JE are employees of CSL Behring, the sponsor of this study. TC: Consultant: CSL Behring, Dyax, Viropharma, Shire, Biocryst; Research funding: Viropharma, CSL Behring, Shire, Dyax, Pharming, Speaker: CSL Behring, Dyax, Shire.

Author contribution

B. Zuraw, M. Cicardi, H. Longhurst, T. Craig, I. Martinez-Saguer, H. Feuersenger, and J. Edelmann were involved in the development of the study protocol and contributed to the interpretation of the data. B. Zuraw wrote the first manuscript draft and further versions. R. Parasrampur and J. Sidhu conducted the PK analysis and described the PK findings. J. Bernstein, H. Li, M. Magerl, S. Maseehur Rehman and P. Staubach contributed to the data presentation, provided comments and reviewed the manuscript versions. All authors contributed to the review of the manuscript and provided final approval of the manuscript before submission.

Supporting Information

Additional Supporting Information may be found in the online version of this article:

Figure S1. Relationship between body weight and C1-INH functional activity after fixed-dosing or body-weight adjusted dosing of CSL830. Median (solid lines) and 95% CI (shaded areas) of the prediction.

Appendix S1. COMPACT STUDY GROUP (Clinical Studies for Optimal Management of Preventing Angioedema with low-volume subcutaneous C1-Inhibitor Replacement Therapy).

Table S1. Local site reactions are injection site events which were specifically sought for and recorded in our trial (so called 'solicited local adverse events').

References

- Frank MM, Gelfand JA, Atkinson JP. Hereditary angioedema: the clinical syndrome and its management. *Ann Intern Med* 1976;**84**:580–593.
- Cicardi M, Bergamaschini L, Marasini B, Boccassini G, Tucci A, Agostoni A. Hereditary angioedema: an appraisal of 104 cases. *Am J Med Sci* 1982;**284**:2–9.
- Zuraw BL. Clinical practice. Hereditary angioedema. *N Engl J Med* 2008;**359**:1027–1036.
- Bork K, Hardt J, Witzke G. Fatal laryngeal attacks and mortality in hereditary angioedema due to C1-INH deficiency. *J Allergy Clin Immunol* 2012;**130**:692–697.
- Zuraw BL, Banerji A, Bernstein JA, Busse PJ, Christiansen SC, Davis-Lorton M et al. US Hereditary Angioedema Association Medical Advisory Board 2013 recommendations for the management of hereditary angioedema due to C1 inhibitor deficiency. *J Allergy Clin Immunol Pract* 2013;**1**:458–467.
- Bowen T, Cicardi M, Farkas H, Bork K, Longhurst HJ, Zuraw B et al. 2010 International consensus algorithm for the diagnosis, therapy and management of hereditary angioedema. *Allergy Asthma Clin Immunol* 2010;**6**:24–36.
- Cicardi M, Bork K, Caballero T, Craig T, Li HH, Longhurst H et al. Evidence-based recommendations for the therapeutic management of angioedema owing to hereditary C1 inhibitor deficiency: consensus report of an International Working Group. *Allergy* 2012;**67**:147–157.
- Craig T, Aygören-Pürsün E, Bork K, Bowen T, Boysen H, Farkas H et al. WAO guideline for the management of hereditary angioedema. *World Allergy Organ J* 2012;**5**:182–199.
- Lang DM, Aberer W, Bernstein JA, Ching HH, Grumach AS, Hide M et al. International consensus on hereditary and acquired angioedema. *Ann Allergy Asthma Immunol* 2012;**109**:395–402.
- Zuraw BL, Bernstein JA, Lang DM, Craig T, Dreyfus D, Hsieh F et al. A focused parameter update: hereditary angioedema, acquired C1 inhibitor deficiency, and angiotensin-converting enzyme inhibitor-associated angioedema. *J Allergy Clin Immunol* 2013;**131**:1491–1493.
- Cicardi M, Aberer W, Banerji A, Bas M, Bernstein JA, Bork K et al. Classification, diagnosis, and approach to treatment for angioedema: consensus report from the Hereditary Angioedema International Working Group. *Allergy* 2014;**69**:602–616.
- Zuraw BL, Busse PJK, White M, Jacobs J, Lumry W, Baker J et al. Nanofiltered C1 inhibitor concentrate for treatment of hereditary angioedema. *N Engl J Med* 2010;**363**:513–522.
- Waytes AT, Rosen FS, Frank MM. Treatment of hereditary angioedema with a vapor-heated C1 inhibitor concentrate. *N Engl J Med* 1996;**334**:1630–1634.
- Wagenaar-Bos IG, Drouet C, Aygören-Pürsün E, Bork K, Bucher C, Bygum A et al. Functional C1-inhibitor diagnostics in hereditary angioedema: assay evaluation and recommendations. *J Immunol Methods* 2008;**338**:14–20.
- Kelemen Z, Moldovan D, Mihaly E, Visy B, Szeplaki G, Csuka D et al. Baseline level of functional C1-inhibitor correlates with disease severity scores in hereditary angioedema. *Clin Immunol* 2010;**134**:354–358.
- Späth PJ, Wüthrich B, Büttler R. Quantification of C1-inhibitor functional activities by immunodiffusion assay in plasma of patients with hereditary angioedema-evidence of a functionally critical level of C1-inhibitor concentration. *Complement* 1984;**1**:147–159.
- Martinez-Saguer I, Cicardi M, Suffritti C, Rusieck E, Aygören-Pürsün E, Stoll H et al. Pharmacokinetics of plasma-derived C1-esterase inhibitor after subcutaneous versus intravenous administration in subjects with mild or moderate hereditary angioedema: the PASSION study. *Transfusion* 2014;**54**:1552–1561.
- Gandhi PK, Gentry WM, Bottorff MB. Thrombotic events associated with C1 esterase inhibitor products in patients with hereditary angioedema: investigation from the United States Food and Drug Administration adverse event reporting system database. *Pharmacotherapy* 2012;**32**:902–909.
- Kalaria S, Craig T. Assessment of hereditary angioedema treatment risks. *Allergy Asthma Proc* 2013;**34**:519–522.
- Frank MM. Hereditary angioedema: the clinical syndrome and its management in the United States. *Immunol Allergy Clin North Am* 2006;**26**:653–668.
- Zanichelli A, Vacchini R, Badini M, Penna V, Cicardi M. Standard care impact on angioedema because of hereditary C1 inhibitor deficiency: a 21-month prospective study in a cohort of 103 patients. *Allergy* 2011;**66**:192–196.
- Frank MM. Update on preventive therapy (prophylaxis) for hereditary angioedema. *Immunol Allergy Clin North Am* 2013;**33**:495–503.
- Xu YY, Buyantseva LV, Agarwal NS, Oliveri K, Zhi YX, Craig TJ. Update on treatment of hereditary angioedema. *Clin Exp Allergy* 2013;**43**:395–405.
- Bork K, Bygum A, Hardt J. Benefits and risks of danazol in hereditary angioedema: a long-term survey of 118 patients. *Ann Allergy Asthma Immunol* 2008;**100**:153–161.
- Füst G, Farkas H, Csuka D, Varga L, Bork K. Long-term efficacy of danazol treatment in hereditary angioedema. *Eur J Clin Invest* 2011;**41**:256–262.
- Richter WF, Bhansali SG, Morris ME. Mechanistic determinants of biotherapeutics

- absorption following SC administration. *AAPS J* 2012;**14**:559–570.
27. McDonald TA, Zepeda ML, Tomlinson MJ, Bee WH, Ivens IA. Subcutaneous administration of biotherapeutics: current experience in animal models. *Curr Opin Mol Ther* 2010;**12**:461–470.
28. Quastel M, Harrison R, Cicardi M, Alper CA, Rosen FS. Behavior in vivo of normal and dysfunctional C1 inhibitor in normal subjects and patients with hereditary angioneurotic edema. *J Clin Invest* 1983;**71**:1041–1046.