



US006163492A

United States Patent [19]
Sredanovic et al.

[11] **Patent Number:** **6,163,492**
[45] **Date of Patent:** **Dec. 19, 2000**

- [54] **PROGRAMMABLE LATCHES THAT INCLUDE NON-VOLATILE PROGRAMMABLE ELEMENTS**
- [75] Inventors: **Nikolas Sredanovic; Helena Calendar**, both of Mountain View, Calif.
- [73] Assignee: **Mosel Vitelic, Inc.**, Hsin chu, Taiwan
- [21] Appl. No.: **09/178,445**
- [22] Filed: **Oct. 23, 1998**
- [51] Int. Cl.⁷ **G11C 7/00**
- [52] U.S. Cl. **365/225.7; 365/230.08; 365/189.05; 365/185.14**
- [58] Field of Search **365/200, 225.7, 365/230.08, 189.05, 185.14, 185.01**
- [56] **References Cited**

U.S. PATENT DOCUMENTS

4,387,503	6/1983	Aswell et al.	29/575
4,404,635	9/1983	Flaker	364/481
4,532,402	7/1985	Overbeck	219/121 LU
4,532,607	7/1985	Uchida	365/96
4,546,455	10/1985	Iwahashi et al.	365/200
4,571,704	2/1986	Bohac, Jr.	365/156
4,614,881	9/1986	Yoshida et al.	307/219
4,617,651	10/1986	Ip et al.	365/200
4,725,979	2/1988	Hoberman	365/96
4,771,285	9/1988	Agrawal et al.	340/825
4,779,229	10/1988	Agrawal	365/94
4,837,520	6/1989	Golke et al.	324/550
4,852,044	7/1989	Turner et al.	364/900
4,943,804	7/1990	Lee et al.	340/825
5,066,998	11/1991	Fischer et al.	357/51
5,086,331	2/1992	Hartgring et al.	357/51
5,134,585	7/1992	Murakami et al.	365/200
5,185,291	2/1993	Fischer et al.	437/173
5,285,953	2/1994	Tsujimoto	365/200
5,440,246	8/1995	Murray et al.	326/38
5,455,937	10/1995	Berman et al.	395/500
5,459,684	10/1995	Nakamura et al.	365/149

5,497,355	3/1996	Mills et al.	365/230.08
5,506,638	4/1996	Cowles et al.	326/38
5,526,320	6/1996	Zager et al.	365/233.5
5,544,124	8/1996	Zager et al.	365/230.08
5,566,107	10/1996	Gilliam	365/200
5,640,364	6/1997	Merritt et al.	365/233.5
5,696,455	12/1997	Madurawe	326/41
5,710,741	1/1998	McLaury	365/226
5,793,688	8/1998	McLaury	365/203
5,812,489	9/1998	Matsui	365/233
5,870,342	2/1999	Fukuda	365/201
5,892,712	4/1999	Hirose et al.	365/185.07
5,898,621	4/1999	Takahashi et al.	365/185.33

FOREIGN PATENT DOCUMENTS

288 689 10/1983 Germany .

OTHER PUBLICATIONS

B. Prince, "High Performance Memories" New Architecture DRAMs and SRAMs Evolution and Function, 1996 , pp. 135-227.

B. Prince, "Semiconductor Memories" A Handbook of Design, Manufacture and Application, Second Edition, (1991), pp. 762-764.

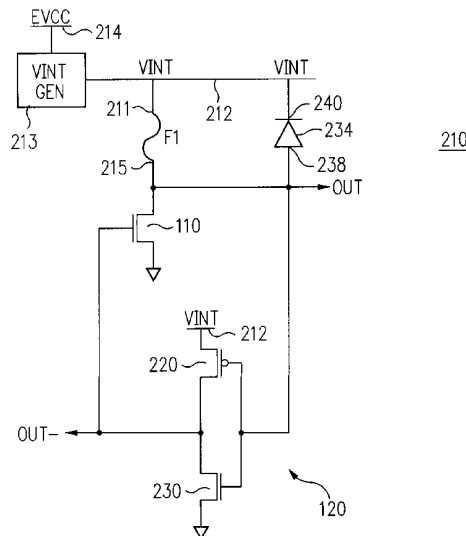
"Synchronous Graphics RAM" Micron Technology, Inc. of Bosie Idaho, 1998, pp. 1-45.

Primary Examiner—Viet Q. Nguyen
Attorney, Agent, or Firm—Skjerven, Morrill, MacPherson, Franklin & Friel LLP; Michael Shenker

[57] **ABSTRACT**

A non-volatile programmable latch (210) has a fuse (F1) connected between a non-ground voltage terminal (212) and an output terminal (OUT). A NMOS transistor (110) is connected between the output terminal and ground. An inverter (120) has an input connected to the output terminal and an output connected to the gate of the NMOS transistor. A diode connects the output terminal to the non-ground voltage terminal (212) to prevent a charge build up on the output terminal when the power is off.

21 Claims, 5 Drawing Sheets



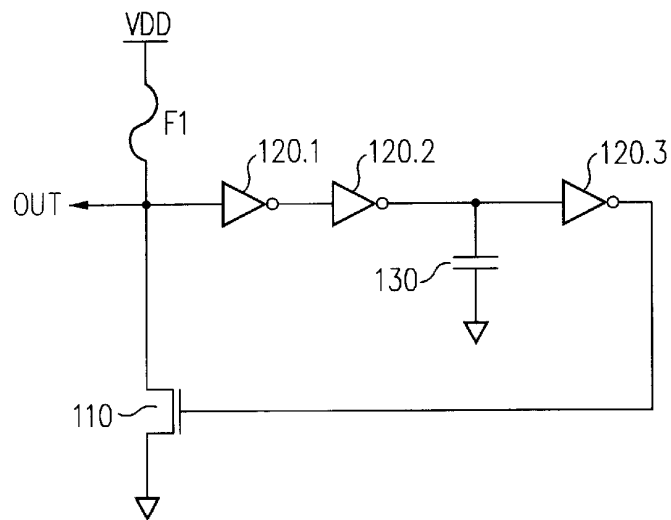


FIG. 1
(PRIOR ART)

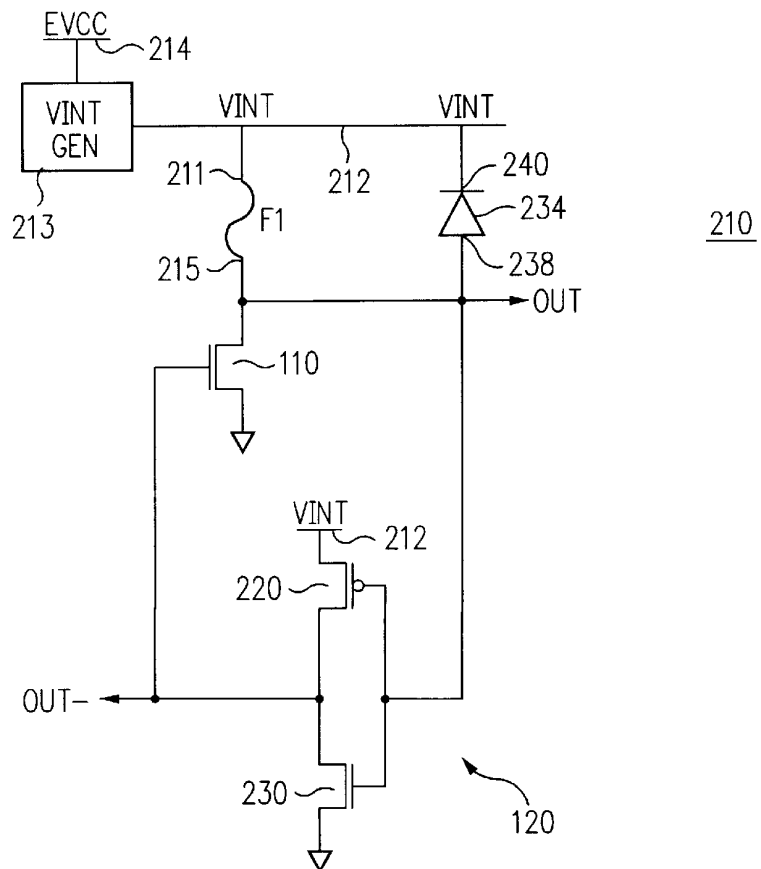


FIG. 2A

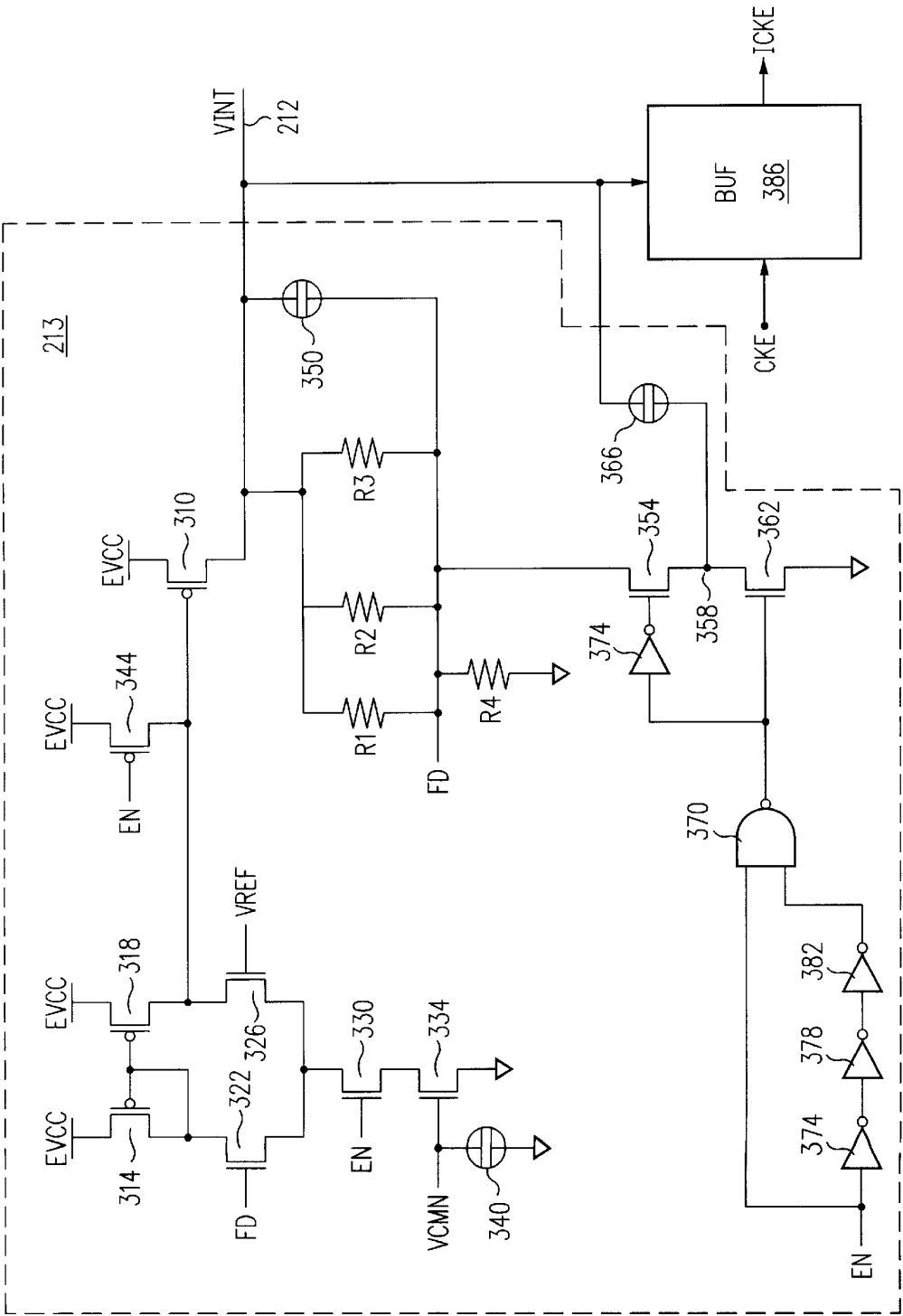


FIG. 3

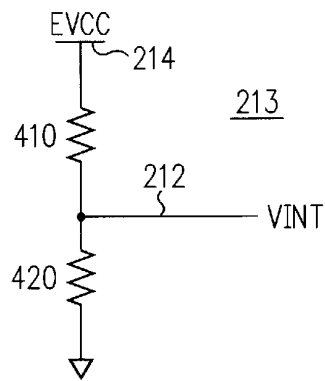


FIG. 4

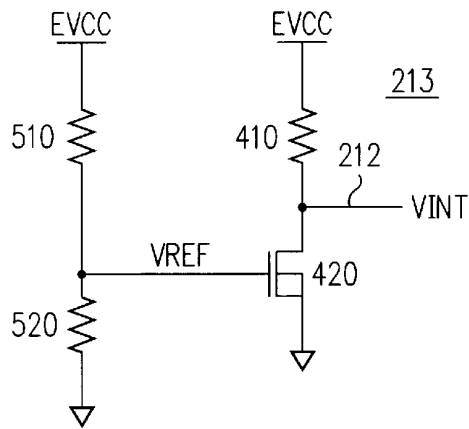


FIG. 5

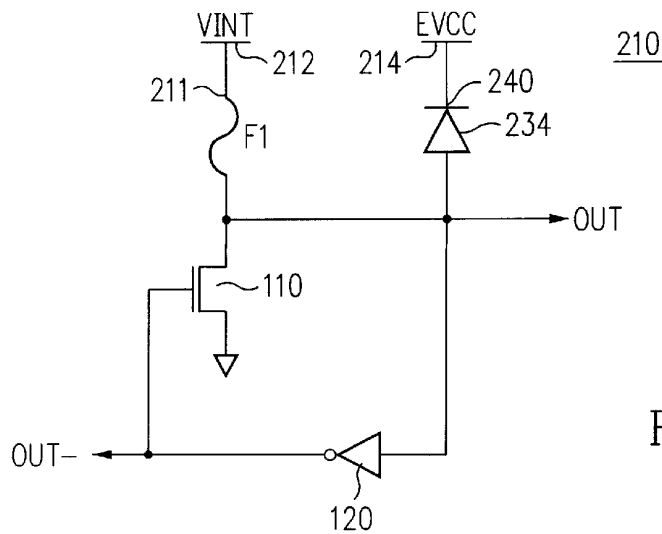


FIG. 6

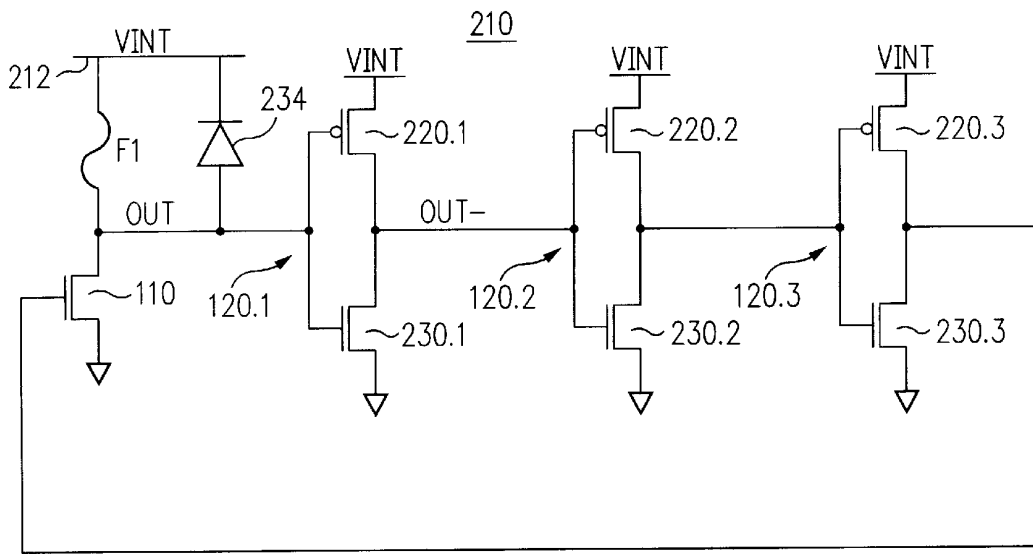


FIG. 7

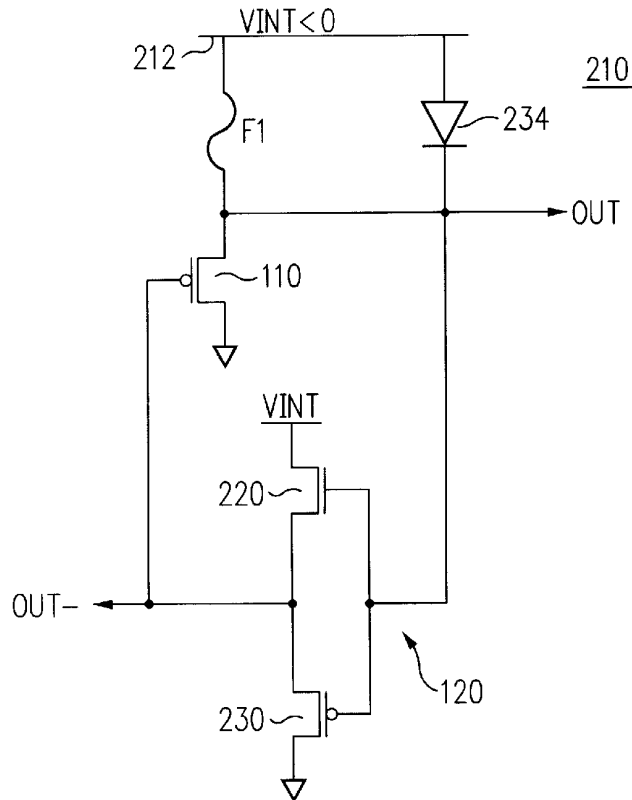


FIG. 8

1

PROGRAMMABLE LATCHES THAT INCLUDE NON-VOLATILE PROGRAMMABLE ELEMENTS

CROSS-REFERENCE TO RELATED APPLICATIONS

Not applicable.

STATEMENT REGARDING FEDERALLY SPONSORED RESEARCH

Not applicable.

BACKGROUND OF THE INVENTION

The present invention relates to programmable latches that include non-volatile programmable elements. Examples of non-volatile programmable elements are fuses.

Programmable latches with fuses are used in integrated circuits to enable modification of the circuits without changing the masks used for circuit fabrication. For example, fuse programmable latches are used to replace defective memory cells with spare cells in semiconductor memories.

FIG. 1 shows one such latch described in U.S. Pat. No. 4,546,455 issued Oct. 8, 1985 to Iwahashi et al. Fuse F1 is connected between the power supply terminal VDD and the latch output terminal OUT. An NMOS transistor 110 is connected between the terminal OUT and the ground terminal. Three serially connected inverters 120.1, 120.2, 120.3 are provided between the output terminal OUT and the gate of transistor 110.

If fuse F1 is intact, the terminal OUT is pulled to VDD. The inverters 120 keep transistor 110 off. If fuse F1 is blown, the terminal OUT is at the ground voltage. The inverters turn transistor 110 on to keep the terminal OUT at ground.

Bypass capacitor 130 is connected between the input of inverter 120.3 and the ground terminal to insure correct initialization of the latch on power-up. More particularly, when the power is off, transistor 110 is non-conductive. Therefore, terminal OUT is floating. According to U.S. Pat. No. 4,546,455, the terminal OUT may "tend to have its potential raised to a logic level '1'". In addition, the terminal OUT potential may become "unstable due to the capacitive coupling" in the integrated circuit. Consequently, during operation, transistor 110 could be off even if the fuse F1 were blown. As a result, the terminal OUT would provide an erroneous voltage.

Capacitor 130 is intended to avoid such malfunction. During power up, capacitor 130 keeps the input of inverter 120.3 low sufficiently long to allow the inverter to turn on transistor 110 and discharge the terminal OUT to ground if the fuse is blown. Then the ground voltage on terminal OUT propagates through the three inverters to keep transistor 110 on.

It is desirable to provide alternative programmable latches.

SUMMARY

Some embodiments of the present invention provide simple and reliable programmable latches. Some programmable latches are reliable because they do not depend on delays such as delays provided by capacitor 130. Dependence on delays is undesirable because delay-dependent circuits may not operate properly if VDD rises slowly. Some latches are simple because they omit capacitor 130 and include only one CMOS inverter.

2

High reliability is achieved in some embodiments by a diode that keeps a voltage on a latch output terminal within a predetermined range of values before power is supplied to the latch. In some embodiments, the diode's anode is connected to terminal OUT, and the cathode is connected to an external power supply pin EVCC or to a reference voltage terminal. When power is off, the EVCC pin or the reference voltage terminal is at ground, and therefore the voltage on the terminal OUT is not higher than one diode threshold voltage relative to ground (0.65V in some embodiments.) The maximum voltage of 0.65V on terminal OUT allows the latch to be powered up correctly even if fuse F1 is blown.

In some embodiments, the diode's cathode is connected to a reference voltage which is used also in other parts of the integrated circuit. The reference voltage is generated by a reference voltage generator which includes one or more pull-down resistors connected to the reference voltage terminal and to the ground terminal. When the power is off, these resistors discharge the reference voltage terminal to ground. Hence, the OUT voltage is not higher than one diode threshold relative to ground when the power is off.

Prior art latch of FIG. 1 has an advantage that a latch initialization does not require a latch initialization signal from outside the latch. The state of the latch is completely determined by the state of fuse F1 and the voltages on the VDD and ground terminals. This advantage is preserved in some embodiments of the present invention. This advantage distinguishes such embodiments of the invention from the latch described in U.S. Pat. No. 5,566,107 issued Oct. 15, 1996 to Gilliam in describing a circuit that needs an external "activate" signal for initialization.

Some embodiments do not include a capacitor to generate a delay.

In some embodiments, only one inverter having a pull-up device and one pull-down device is provided between the output terminal OUT and the gate of transistor 110.

Some embodiments with only one CMOS inverter and no capacitor operate successfully even without a diode because in such embodiments the voltage on the terminal OUT is at the ground level before the power is turned on. The voltage could drift away from the ground level during fuse programming if, for example, the fuse is programmed electrically. (Of note, some embodiments use laser programmable fuses rather than electrically programmable fuses.) However, even if the voltage on terminal OUT becomes high when the fuse is being programmed, the power is turned off after programming, and the voltage on the terminal OUT is allowed to return to ground before the power is turned on again.

Further, in some embodiments, even if the voltage on the terminal OUT is at a high value immediately before the power is turned on, the latch operates properly due to the selection of the trip voltage of the inverter and/or the threshold voltage of transistor 110.

Other features and advantages of the invention are described below. The invention is defined by the appended claims.

BRIEF DESCRIPTION OF THE DRAWINGS

FIG. 1 is a circuit diagram of a prior art programmable latch.

FIG. 2A is a circuit diagram of a programmable latch according to the present invention.

FIG. 2B illustrates a semiconductor cross section of the latch of FIG. 2A.

FIG. 3 is a circuit diagram illustrating a reference voltage generator that powers the latch of FIG. 2A.

FIGS. 4 and 5 are circuit diagrams of alternative reference voltage generators for the latch of FIG. 2A.

FIGS. 6–8 are circuit diagrams of programmable latches according to the present invention.

DESCRIPTION OF PREFERRED EMBODIMENTS

FIG. 2A illustrates a programmable latch **210** according to the present invention. Terminal **211** of fuse **F1** is connected to a terminal **212** providing a constant non-ground voltage VINT. Voltage VINT is an internal power supply voltage generated by VINT generator **213** from an external power supply voltage EVCC received on an external pin **214** of the integrated circuit containing the latch **210**. Voltage VINT also powers other parts of the integrated circuit. Voltage VINT is a positive voltage.

Terminal **215** of fuse **F1** is connected to terminal OUT.

The terminal OUT is connected to the drain of NMOS transistor **110** whose source is connected to a ground terminal.

Terminal OUT is connected to the input of CMOS inverter **120** formed by PMOS pull-up transistor **220** and NMOS pull-down transistor **230**. The inverter input is connected to the gates of transistors **220**, **230**. The source of transistor **220** is connected to VINT terminal **212**. The source of transistor **230** is connected to the ground terminal. The drains of the two transistors are connected to complimentary output terminal OUT– of latch **210**. Terminal OUT– is connected to the gate of transistor **110**.

Diode **234** has its anode terminal **238** connected to terminal OUT and its cathode terminal **240** connected to the VINT terminal **212**. When the power is off, the VINT terminal is at ground. (VINT terminal is connected to ground by a resistor network in generator **213**, as described below in connection with FIG. 3.) Therefore, the voltage on the terminal OUT is not higher than one threshold voltage of diode **234**. If diode **234** is a silicon PN junction diode, the voltage on terminal OUT is not higher than 0.65V. This value is below the trip voltage of inverter **120** and even below the threshold voltage of NMOS transistor **230** (the threshold voltage of transistor **230** is 1.2V in some embodiments). Therefore, if fuse **F1** is blown, transistor **230** remains off when the power is turned on. As soon as transistor **220** charges the gate of transistor **110** to the threshold voltage of transistor **110**, transistor **110** connects the terminal OUT to ground.

If fuse **F1** is conductive, then terminal OUT is at VINT, and transistor **110** is turned off by inverter **120**.

During operation of latch **210** the diode is off and thus no current flows through diode **234**.

FIG. 2B illustrates a cross section of a portion of the integrated circuit incorporating the latch **210** in some embodiments. The source **220S** and the drain **220D** of transistor **220** are P+ semiconductor regions in N well **242** in P substrate **244**. Gate **220G** of transistor **220** is separated from N well **242** by silicon dioxide (not shown). The N well is connected to the VINT terminal via an ohmic contact in the N+ region **246** formed in the N well. The diode cathode **238** is a P+ region formed in the N well. The diode is formed by the PN junction between the region **238** and the surrounding region **240** of N well **242**.

No external signal is used to initialize the latch. The state of the latch (the voltage on the terminal OUT) during the

latch operation is completely determined by the state of fuse **F1** and by the voltages on the terminal **212** and the ground terminal.

FIG. 3 shows one embodiment of VINT generator **213**. The output terminal **212** of the VINT generator is connected to ground by a resistor network which includes: (1) resistors **R1**, **R2**, **R3** connected in parallel between terminal **212** and a node FD; and (2) resistor **R4** interconnecting the node FD and the ground terminal.

The pull-up path between the terminal **212** and the external voltage supply EVCC is through PMOS transistor **310**. The gate of transistor **310** is connected to the output of a differential amplifier formed by PMOS transistors **314**, **318** and NMOS transistors **322**, **326**, **330** and **334**. The sources of transistors **314**, **318** are connected to the EVCC pin. The gates are connected to each other and to the drain of transistor **314**. The drain of transistor **318** is the amplifier output connected to the gate of transistor **310**. The drain of transistor **318** is also connected to the drain of transistor **326**. The drain of transistor **314** is connected to the drain of transistor **322**. The gate of transistor **322** is connected to the node FD. The gate of transistor **326** receives a reference voltage VREF generated by some reference voltage generator (not shown) as known in the art. The sources of transistors **322**, **326** are connected to the drain of transistor **330**. The source of transistor **330** is connected to the drain of transistor **334**. The source of transistor **334** is connected to ground.

The gate of transistor **334** receives a reference voltage VCMN generated by a reference voltage generator (not shown). The gate of transistor **334** is also connected to ground through MOS capacitor **340**. (A MOS capacitor is a capacitor formed by a MOS transistor whose source and drain are shorted together.) The gate of transistor **330** receives an enable signal EN. The signal EN is also delivered to the gate of PMOS transistor **344** whose drain is connected to the gate of transistor **310** and whose source is connected EVCC. When EN is low (ground), the VINT terminal **212** is at ground. When EN is at EVCC, the terminal **212** provides a voltage between ground and EVCC.

Terminal **212** is connected to node FD by MOS capacitor **350**.

Node FD is connected to the drain of NMOS transistor **354**. The source node **358** of transistor **354** is connected to the drain of transistor **362** whose source is connected to ground. Node **358** is connected to terminal **212** through MOS capacitor **366**.

The gate of transistor **362** is connected to the output of NAND gate **370**. The output of gate **370** is also connected to the input of inverter **374** whose output is connected to the gate of transistor **354**. One input of two-input gate **370** receives the enable signal EN. The enable signal EN is delivered to the other output of gate **370** through three serially connected inverters **374**, **378**, **382**.

In some embodiments, voltage VINT on terminal **212** is an internal power supply voltage that powers also other parts of the integrated circuit containing the latch **210**. In some embodiments, the integrated circuit is a synchronous dynamic random access memory (SDRAM). The voltage VINT powers the memory address decoders, command decoding circuitry, burst counting circuitry, and input buffers such as clock enable buffer **386**. Buffer **386** receives a clock enable signal CKE from an external pin and generates an internal clock enable ICKE at ground and VINT voltage levels.

In some embodiments, the synchronous DRAM includes several generators **213**. Each generator is enabled by its own

5

signal EN. Thus, selective generators **213** can be disabled to reduce power consumption (in stand-by mode, for example). However, at least one generator **213** is enabled throughout the circuit operation in order to power circuits that are never disabled, for example, the buffer **386**. Hence, the VINT voltage is a constant value throughout the operation of the integrated circuit.

In some embodiments, the outputs **212** of some or all of the generators **213** are shorted together. However, some generators **213** are sometimes disabled (in stand-by mode for example) when the current drawn from the common terminal **212** of generators **213** is reduced.

In some embodiments, VINT=2.5V and EVCC=3.3V.

Addendum A provides transistor sizes and resistor values and some other particulars for one embodiment of a VINT generator **213**.

FIGS. **4** and **5** show other embodiments of a VINT generator **213**. In FIG. **4**, VINT generator **213** is a voltage divider formed by resistors **410**, **420** connected in series between EVCC pin **214** and the ground pin of the integrated circuit.

In FIG. **5**, resistor **420** is replaced by an NMOS transistor (a long channel transistor in some embodiments) whose body region is connected to the ground terminal. The gate of transistor **420** receives a reference voltage VREF. This voltage is generated by a voltage divider consisting of resistors **510**, **520** connected in series between EVCC and ground. When the power is off, the VREF terminal is at ground, and transistor **420** is off. However, the drain/body diode of transistor **420** does not allow the voltage on terminal **212** to rise above one diode threshold relative to ground.

Other resistors are replaced by transistors in some embodiments. Still other embodiments use other VINT generators, known in the art or to be discovered.

Latch **210** of FIG. **6** is identical to the latch of FIG. **2A** except that in FIG. **6** the diode cathode **240** is connected to EVCC pin **214**.

Some embodiments include two diodes, with one diode connected as in FIG. **6** and the other diode connected as in FIG. **2A**. Some embodiments include diodes connected in series or in parallel between the terminal OUT and the terminal **212** or **214**.

In some embodiments, the terminals **211** and **240** are both connected to the EVCC terminal **214**. Inverter **120** is powered by EVCC. When the power is off, the EVCC terminal is at ground because the integrated circuit includes a voltage divider, such as the voltage divider **213** of FIG. **4**, to generate an intermediate voltage.

In some embodiments, diode **234** is omitted. Nevertheless, if fuse **F1** is non-conductive, the terminal OUT is at ground before power-up. This is true even if the fuse was programmed electrically and some charge accumulated on terminal OUT during programming. Indeed, after the fuse is programmed (that is, made non-conductive), the power is kept off for a while before the latch is used. For example, if the latch is part of a semiconductor memory, the memory fuses are typically programmed when the memory is tested. Then the power is turned off, and the memory is taken out of the testing equipment and shipped to a customer. By the time the customer supplies power to the memory, any charge which may have accumulated on terminal OUT when the fuse was being programmed has been dissipated. Therefore, the terminal OUT is at ground.

As soon as the terminal OUT- is charged by transistor **220** to a threshold voltage of transistor **110**, transistor **110**

6

turns on and keeps the node OUT at the ground voltage. Thus, even if the voltage on terminal OUT increased slightly at the beginning of the power-up operation (that is, when the supply voltage EVCC started rising from 0 volts towards its final value), the terminal OUT is quickly returned to ground. If the power is turned off and then turned on again, the terminal OUT is at zero volts before the power is turned on. Therefore, reliable operation is provided.

In some embodiments, the inverter **120** trip voltage, measured when EVCC has reached its final value, is made high to ensure that the trip voltage will be higher than any voltage on terminal OUT. For example, in some embodiments, the inverter trip voltage is 1.6 V when EVCC=3.3 V. The trip voltage can be made large by making transistor **220** large relative to transistor **230**, or by increasing the threshold voltage of transistor **230**, or by other methods known or to be discovered.

In some embodiments, the threshold voltage of transistor **110** is made low (lower than the threshold voltages of other NMOS transistors, including transistor **230**, in the same integrated circuit), so that even if the terminal OUT is slightly above the inverter trip voltage when the fuse is blown, the inverter will charge the complementary terminal OUT- to a sufficiently high voltage to pull the terminal OUT down. As the terminal OUT is being pulled down, the voltage on terminal OUT- increases, the current through transistor **110** also increases, and eventually the terminal OUT is pulled to ground by the transistor **110**.

In some embodiments with or without the diode **234**, EVCC=3.3V, the threshold voltage of transistor **230** is 1.2V, the threshold voltage of transistor **220** is -0.8V, and the threshold voltage of transistor **110** is 0.5V. The trip voltage of inverter **120** is 1.6V at the final EVCC value of 3.3V.

FIG. **7** illustrates another embodiment of latch **210**. Fuse **F1** and diode **234** are connected to terminals VINT and OUT, and NMOS transistor **110** is connected to the terminal OUT and to the ground terminal, as in FIG. **2A**. However, three inverters **120.1**, **120.2**, **120.3** are provided between the terminal OUT and the gate of transistor **110**. In inverter **120.1**, the gates of PMOS transistor **220.1** and NMOS transistor **230.1** are connected to the terminal OUT. The source of transistor **220.1** is connected to VINT. The source of transistor **230.1** is connected to ground. The drains of transistors **220.1**, **230.1** are connected to the gates of PMOS transistor **220.2** and NMOS transistor **230.2** of inverter **120.2**. The drains of transistor **220.2**, **230.2** are connected to the gates of PMOS transistor **220.3** and NMOS transistor **230.3** of inverter **120.3**. The sources of transistors **220.2**, **220.3** are connected to the VINT terminal **212**. The sources of transistors **230.2**, **230.3** are connected to ground. The drains of transistors **220.3**, **230.3** are connected to the gate of transistor **110**.

The voltage VINT is generated by some voltage generator such as the generator **213** of FIG. **3**.

In some embodiments, diode **234** is omitted, or its cathode is connected to EVCC pin **214**.

No capacitor is used in the latch of FIG. **7**.

The output of inverter **120.1** (the terminal connected to the drains of transistors **220.1**, **230.1**) is the complimentary output OUT- of latch **210**.

If the fuse **F1** is conductive, then terminal OUT is at VINT, and the three inverters keep transistor **110** off. If the fuse is blown, then terminal OUT is at ground, or is at most one diode threshold above ground, for essentially the same reasons as those explained above in connection with FIG. **2A**. Therefore, when the power is supplied, transistor **110** is turned on.

In some embodiments, the trip voltage of inverter **120.1** is made high to ensure that when the fuse is blown, the trip voltage will be higher than any possible voltage on the terminal OUT.

In some embodiment, the threshold voltage of transistor **110** is made low (lower than threshold voltages of other NMOS transistors in the same integrated circuit) to facilitate discharge of terminal OUT, similarly to the FIG. 2A embodiment.

Some embodiments include five inverters, or some other number of inverters, connected in series between the terminal OUT and the gate of transistor **110**.

Latch **210** of FIG. 8 is similar to the latch of FIG. 2A, but the supply voltage EVCC and the voltage VINT are negative. Transistors **110** and **230** are PMOS transistors. Transistor **220** is an NMOS transistor. Diode **234** has its anode connected to VINT terminal **212** and its cathode connected to terminal OUT.

Some embodiments of the latch of FIG. 7 or of latches with five or more inverters also use negative supply voltages.

Some embodiments use a non-ground reference voltage instead of the ground.

In some embodiments of FIGS. 2A, 7, 8, fuse F1 is a laser programmable fuse made of polysilicon, metal (for example, aluminum), or some other conductive material. In other embodiments, the fuse F1 is an electrically programmable fuse, for example, a polysilicon fuse which can be blown by current supplied through another transistor (not shown). In still other embodiments, fuse F1 is replaced by some other programmable element, for example, an antifuse, an EPROM, EEPROM, or UPROM cell (see B. Prince, "Semiconductor Memories" (1991), pages 762–764 incorporate herein by reference), or some other non-volatile programmable element known or to be discovered.

In some embodiments, the inverters **120** of FIGS. 2A, 7, 8 are non-CMOS inverters. For example, in some embodiments the pull-up transistors **220** are replaced by suitable resistors or depletion mode transistors.

Programmable latches **210** are suitable for use in a wide variety of memory and non-memory circuits. Some latch embodiments are used in dynamic random access memories. Some latch embodiments are used in spare row and column decoders to select spare rows or columns. Such use of programmable latches is described in U.S. Pat. No. 4,546,455 issued Oct. 8, 1985 to Iwahashi et al. and incorporated herein by reference. In some embodiments, programmable latches **210** are used to adjust delay times or select a clock signal, as described in U.S. Pat. No. 5,440,246 issued Aug. 8, 1995 to Murray et al. and incorporated herein by reference. In some embodiments, the latches **210** are used to salvage defective memories as described in U.S. patent application Ser. No. 08/840,337 filed Apr. 28, 1997 by Li-Chun Li, now U.S. Pat. No. 5,889,414 issued on Mar. 30, 1999, incorporated herein by reference.

The invention is not limited by the embodiments described above. In some embodiments, transistor **110** is replaced by a variable-impedance electrical path which includes a number of transistors connected in series or in parallel between the terminal OUT and the ground terminal. One or more of the transistors have their gates connected to the output of inverter **120** or **120.3**. In some embodiments, other circuit elements (such as resistors, perhaps variable-impedance resistors) are included between the terminal OUT and the ground or VINT terminals. In some embodiments, diode **234** is a Schottky diode. Other embodiments and

variations are within the scope of the invention, as defined by the appended claims.

ADDENDUM A

The table below specifies transistor channel width/length dimensions (in micrometers) and resistor values for one embodiment of a VINT generator **213** of FIG. 3. The NAND gate **370** and all the inverters are CMOS circuits.

Device	Specification
Resistor R1	5.6 K Ω
Resistor R2	90 K Ω
Resistor R3	90 K Ω
Resistor R4	6 K Ω
Transistor 310	1000/1
Transistor 314	50/0.6
Transistor 318	100/0.6
Transistor 322	50/0.6
Transistor 326	100/0.6
Transistors 330	100/1
Transistor 334	100/1
Transistor 340	2/15
Transistor 344	2/2
Transistor 350	2/100
Transistor 354	20/1
Transistor 362	4/1
Transistor 366	2/70
NAND gate 370	10/1 for each transistor P = 6/1 (PMOS transistor width length), N = 6/1 (NMOS transistor width/length)
Inverter 374	P = 5/1, N = 2/2
Inverters 374, 378, 382	

Each resistor R1, R2, R3, R4 is an N-type diffusion region in a P-type monocrystalline silicon substrate region biased at ground.

What is claimed is:

1. A programmable latch comprising:

a first terminal for receiving a first voltage;

a second terminal for receiving a second voltage;

a terminal T1 for providing a signal indicating a state of the programmable latch;

a programmable electrical path including a non-volatile programmable element such that when the programmable element is conductive, the programmable path connects the terminal T1 to the first terminal, and when the programmable element is non-conductive, the programmable path does not connect the terminal T1 to the first terminal;

a variable-impedance electrical path between the terminal T1 and the second terminal, wherein the impedance of the electrical path is controlled by a signal on the terminal T1; and

a diode for keeping a voltage on the terminal T1 within a predetermined range of values before power is supplied to the latch, to prevent the latch from assuming an incorrect state when power is supplied to the latch.

2. The programmable latch of claim 1 wherein during operation of the latch the signal on the terminal T1 is completely determined by the state of the programmable element and the first and second voltages.

3. The programmable latch of claim 1 wherein the latch does not receive any latch initialization signal from outside the latch.

4. The programmable latch of claim 1 wherein no current flows through the diode during normal operation of the latch,

9

but when the power is off then current flows through the diode if the voltage on the terminal T1 is outside the predetermined range of values.

5. The programmable latch of claim 1 in combination with a first electrical path interconnecting a first terminal of the diode and a ground terminal, wherein during normal operation the first terminal of the diode is charged to a voltage that turns off the diode, but when the power is off the first terminal of the diode is discharged through said first electrical path.

6. The combination of claim 5 wherein the first electrical path is a resistor or a resistor network.

7. The combination of claim 5 wherein the first electrical path is part of a reference voltage generator whose output is connected to the diode's first terminal.

8. The programmable latch of claim 1 wherein the diode has one terminal connected to the terminal T1, and the diode has another terminal connected to the first terminal.

9. The programmable latch of claim 1 wherein the latch is an integrated circuit or a part of an integrated circuit, wherein the diode has one terminal connected to the terminal T1 and the diode has another terminal which is to receive a non-ground power supply voltage from an external pin of the integrated circuit.

10. The programmable latch of claim 1 wherein: the programmable element is a fuse connected to and between the terminal T1 and the first terminal;

the variable-impedance path is a transistor connected to and between the terminal T1 and the second terminal and having a control terminal;

the programmable latch further comprises an inverter whose input is connected to the terminal T1 and whose output is connected to the control terminal of said transistor, the inverter having a pull-up device and a pull-down device, wherein at least one of the pull-up and pull-down devices is connected to the inverter input, and both of the pull-up and pull-down devices are connected to the inverter output.

11. The programmable latch of claim 10 wherein one of the pull-up and pull-down devices is a MOS transistor formed in a first semiconductor region of a first conductivity type, and the diode comprises a second semiconductor region of a second conductivity type forming a junction with the first semiconductor region, the second region being connected to the terminal T1.

12. The programmable latch of claim 11 wherein the MOS transistor is a PMOS transistor, the first conductivity type is type N, the second conductivity type is type P, and the first semiconductor region is to receive a positive voltage.

13. The programmable latch of claim 1 wherein: said predetermined range consists of all voltages below a predetermined value; and

10

when the programmable element is conductive, the variable-impedance path is non-conductive.

14. A programmable latch comprising:

a first terminal for receiving a constant non-ground voltage throughout operation of the latch;

a second terminal for receiving a voltage;

a terminal T1 for providing a signal indicating a state of the programmable latch;

a non-volatile programmable element connected to the terminal T1 and the first terminal, the programmable element providing a conductive path between the terminal T1 and the first terminal when the programmable element is conductive, the programmable element isolating the terminal T1 from the first terminal when the programmable element is non-conductive;

a variable-impedance electrical path connected between the terminal T1 and the second terminal, the variable-impedance path having a control terminal for controlling the impedance of the variable-impedance path; and

an inverter having an input connected to the terminal T1 and an output connected to the control terminal of the variable-impedance path, wherein the inverter has a pull-up device and a pull-down device, at least one of the pull-up and pull-down devices is connected to the inverter input, and both of the pull-up and pull-down devices are connected to the inverter output.

15. The programmable latch of claim 14 wherein during operation the voltage on the terminal T1 is completely determined by the state of the programmable element and the voltages on the first and second terminals.

16. The programmable latch of claim 14 wherein the latch does not receive any latch initialization signal from outside the latch.

17. The programmable latch of claim 14 wherein the second terminal is to receive a ground voltage throughout operation of the latch.

18. The programmable latch of claim 14 wherein the programmable element is a fuse.

19. The programmable latch of claim 14 wherein the variable-impedance electrical path is an NMOS transistor, and the inverter is a CMOS inverter.

20. The programmable latch of claim 14 wherein the first voltage is about 2.5 V, and the trip voltage of the inverter at a final value of a voltage that powers the inverter is about 1.6 V.

21. The programmable latch of claim 14 wherein the variable-impedance path is an NMOS transistor having a threshold voltage of about 1.2 V, the constant non-ground voltage is about 2.5 V, and the second terminal is to receive a ground voltage throughout operation of the latch.

* * * * *