



US006188986B1

(12) **United States Patent**  
**Matulich et al.**

(10) **Patent No.: US 6,188,986 B1**  
(45) **Date of Patent: \*Feb. 13, 2001**

(54) **VOICE ACTIVATED SWITCH METHOD AND APPARATUS**

(75) Inventors: **Richard Matulich; Allan Ligi**, both of  
Poway, CA (US)

(73) Assignee: **VOS Systems, Inc.**, San Diego, CA  
(US)

(\*) Notice: This patent issued on a continued prosecution application filed under 37 CFR 1.53(d), and is subject to the twenty year patent term provisions of 35 U.S.C. 154(a)(2).

Under 35 U.S.C. 154(b), the term of this patent shall be extended for 0 days.

(21) Appl. No.: **09/133,724**

(22) Filed: **Aug. 13, 1998**

#### Related U.S. Application Data

(63) Continuation-in-part of application No. 09/002,436, filed on Jan. 2, 1998, now abandoned.

(51) **Int. Cl.<sup>7</sup>** ..... **G10L 15/00**

(52) **U.S. Cl.** ..... **704/275; 704/275**

(58) **Field of Search** ..... 704/233, 225,  
704/270-275; 381/107-110; 375/260

#### (56) References Cited

##### U.S. PATENT DOCUMENTS

H891	2/1991	Hashimoto .	
3,555,192 *	1/1971	Hymmer .....	381/110
3,818,481	6/1974	Dorfman et al. .	
4,052,568 *	10/1977	Jankowski .....	704/233
4,119,797	10/1978	Wollert .	
4,433,435 *	2/1984	David .....	381/110
4,829,576	5/1989	Porter .	
4,843,627	6/1989	Stebbins .	
4,912,766	3/1990	Forse .	
5,086,385 *	2/1992	Launey .....	704/275
5,199,080	3/1993	Kimura et al. .	
5,351,272 *	9/1994	Abraham .....	375/260
5,430,826	7/1995	Webster et al. .	
5,488,273	1/1996	Chang .	
5,493,618	2/1996	Stevens et al. .	

5,644,061 7/1997 Andreshak et al. .

5,790,754 8/1998 Mozer et al. .

#### FOREIGN PATENT DOCUMENTS

28 40 132 A1 3/1980 (DE) .

297 13 054

U1 12/1997 (DE) .

297 18 636

U1 3/1998 (DE) .

#### OTHER PUBLICATIONS

Sensory, Inc., RSC-164 Data Sheet, pp. 1-8, 1996.\*

Lereboullet, Voice Recognition Processors (DATABASE), pp. 1-12, Nov. 1996.\*

Sensory, Inc., Voice Direct™, Speech Recognition IC, pp. 1-4, 1996.\*

Beranek, Leo, Acoustics, McGraw-Hill Book Company, Inc., pp. 338, 407, 414, 415 and 419, 1954.\*

Printed Excerpts of Images Company's Web Page [http://www.imagesco.com/]—Speech Recognition Circuit; Speaker Dependent/Speaker Independent; Programming the HM2007; Printed Dec. 4, 1997.

Printed Excerpts of Voice Connexion, Inc.'s Web Page [http://www.voicecnx.com/]—Intro Voice Pro-Module; Printed Dec. 4, 1997.

Printed Excerpts of Sensory, Inc.'s Web Page [http://www.sensoryinc.com/]—RSC-164 Datasheet; Printed Nov. 19, 1997.

\* cited by examiner

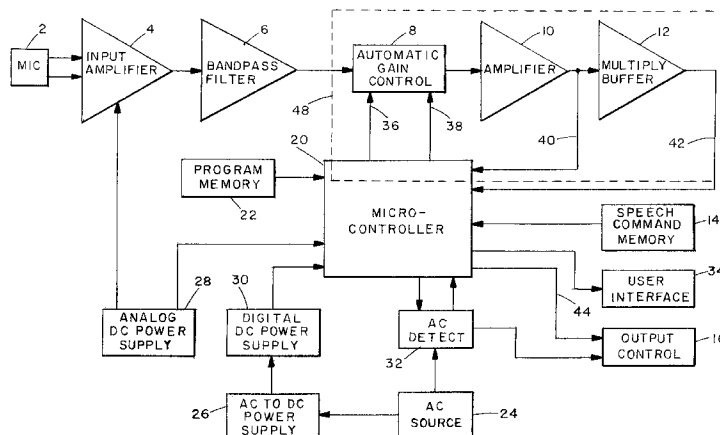
Primary Examiner—David D. Knepper

(74) Attorney, Agent, or Firm—Brown, Martin, Haller & McClain

#### (57) ABSTRACT

A voice activated device for producing control signals in response to speech is self-contained and requires no additional software or hardware. The device may be incorporated into a housing that replaces a wall switch that is connected to an AC circuit. An alternate housing is portable and includes a jack that plugs into and lies flush against a standard AC utility outlet, and at least one plug for accepting an AC jack of any electronic product or appliance. The device acts as a control interface between utility power and connected electrical devices by connecting or disconnecting power to the electrical devices based on speech commands.

25 Claims, 11 Drawing Sheets



**Samsung v. SpeakWare, Inc.**  
**IPR 2019-01146 U.S. Pat. 6,397,186**  
**Exhibit 1016**

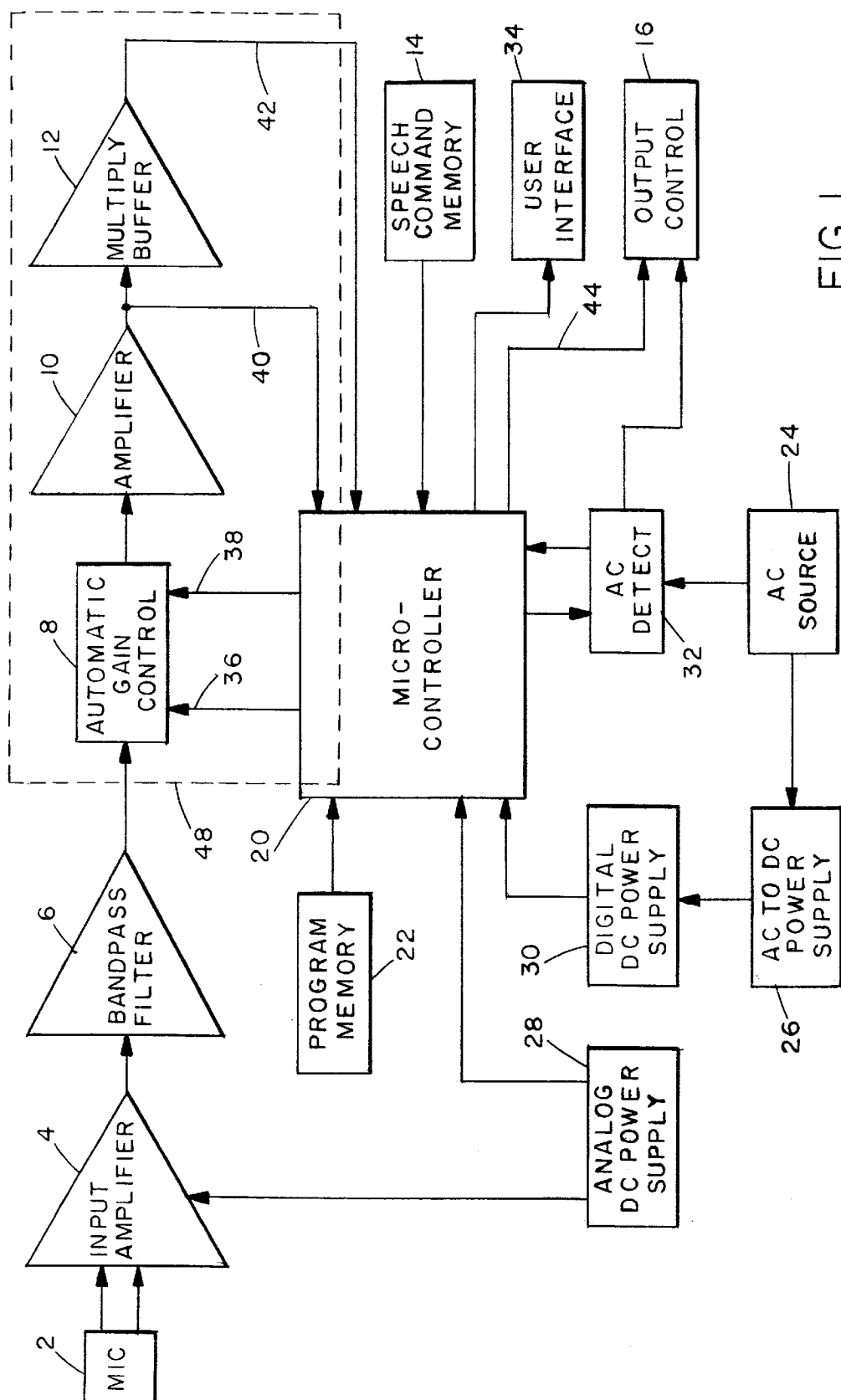


FIG. 1

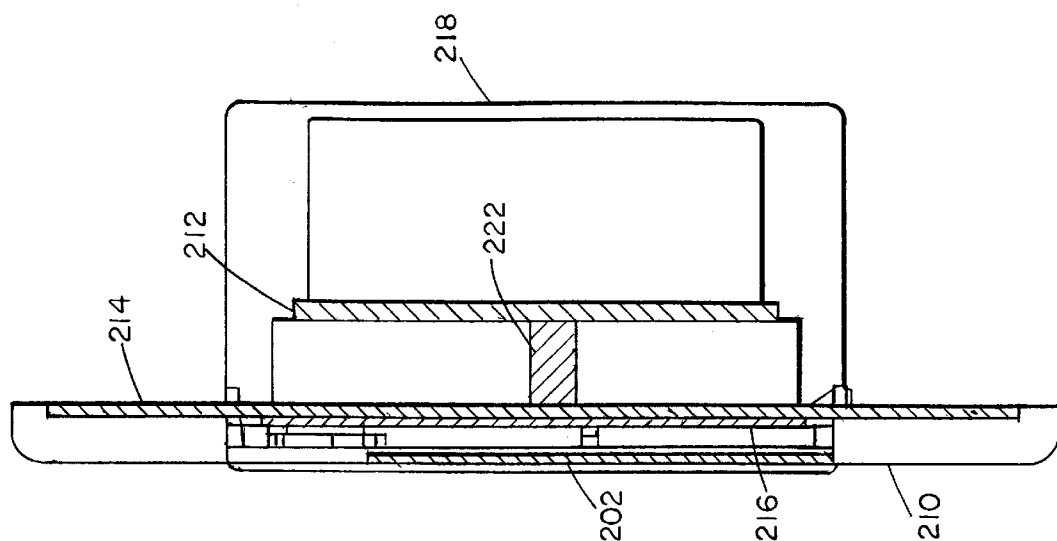


FIG. 5

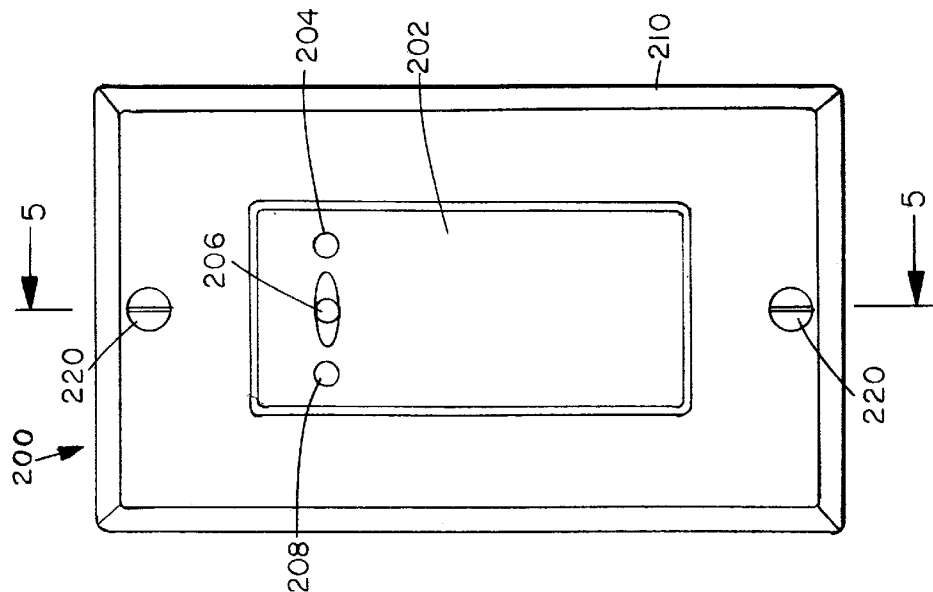


FIG. 4

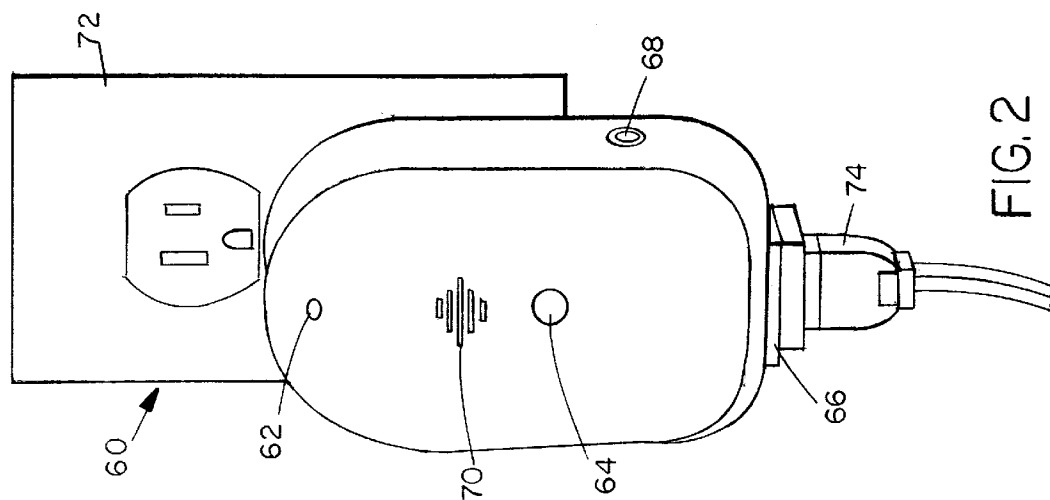


FIG. 2

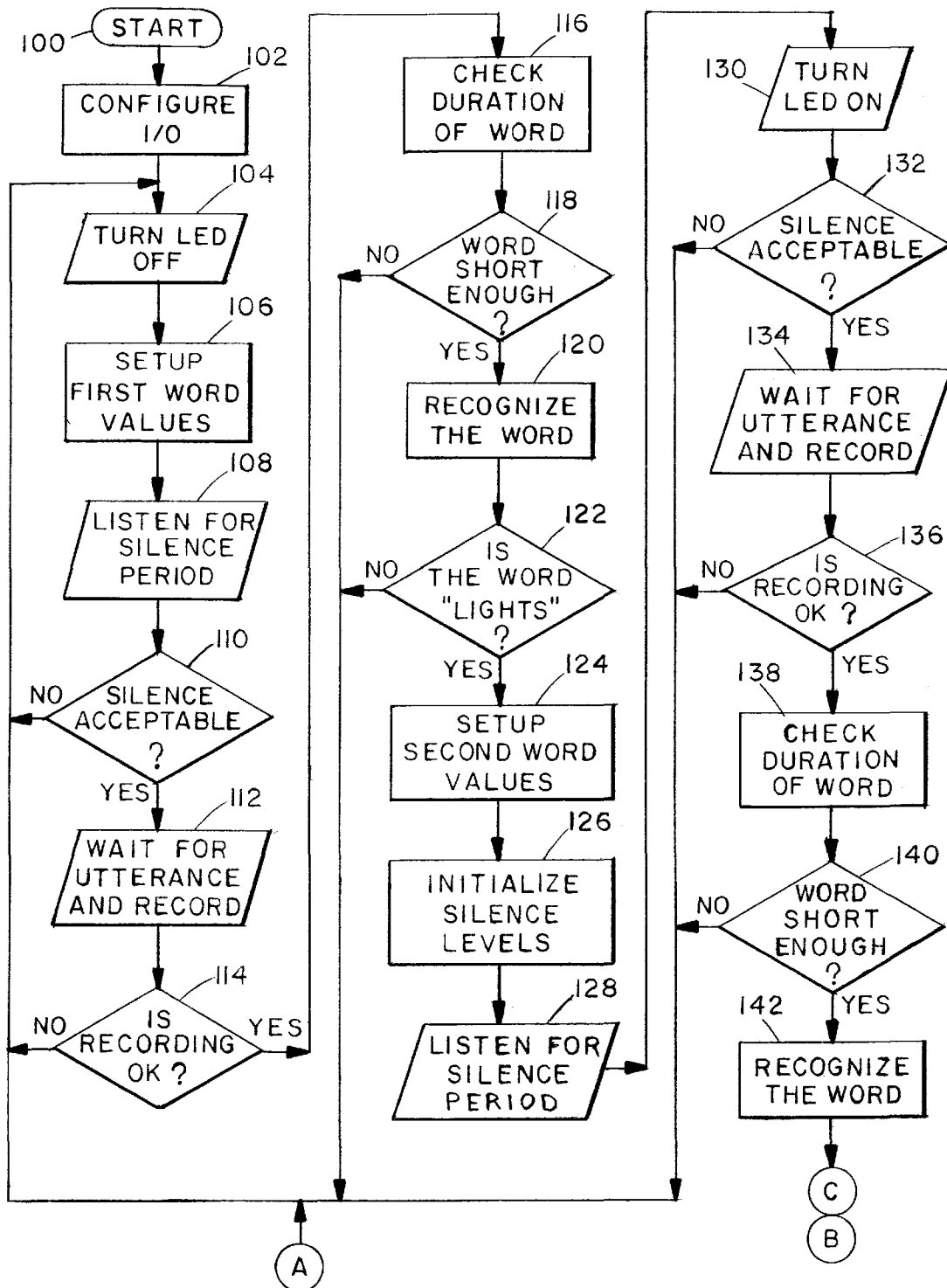


FIG. 3A

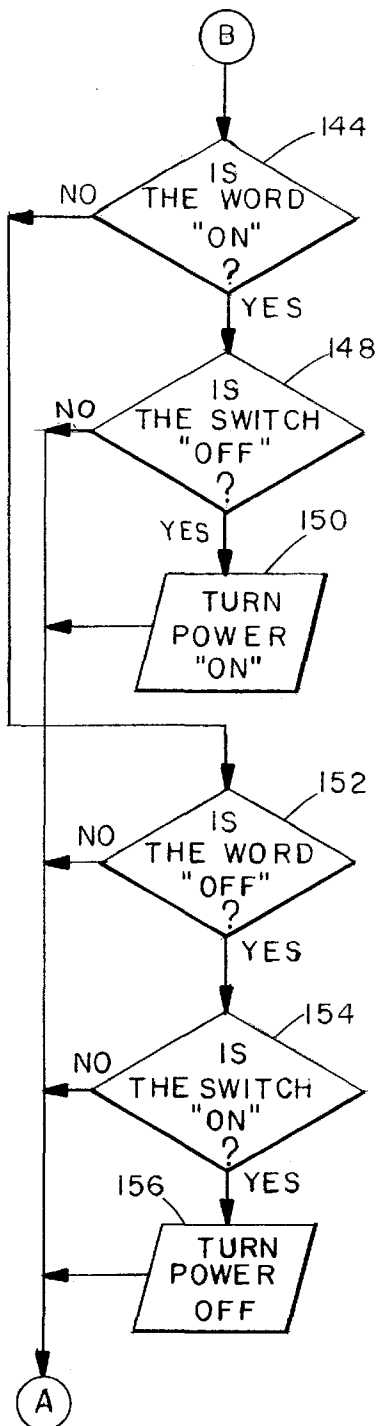


FIG. 3B

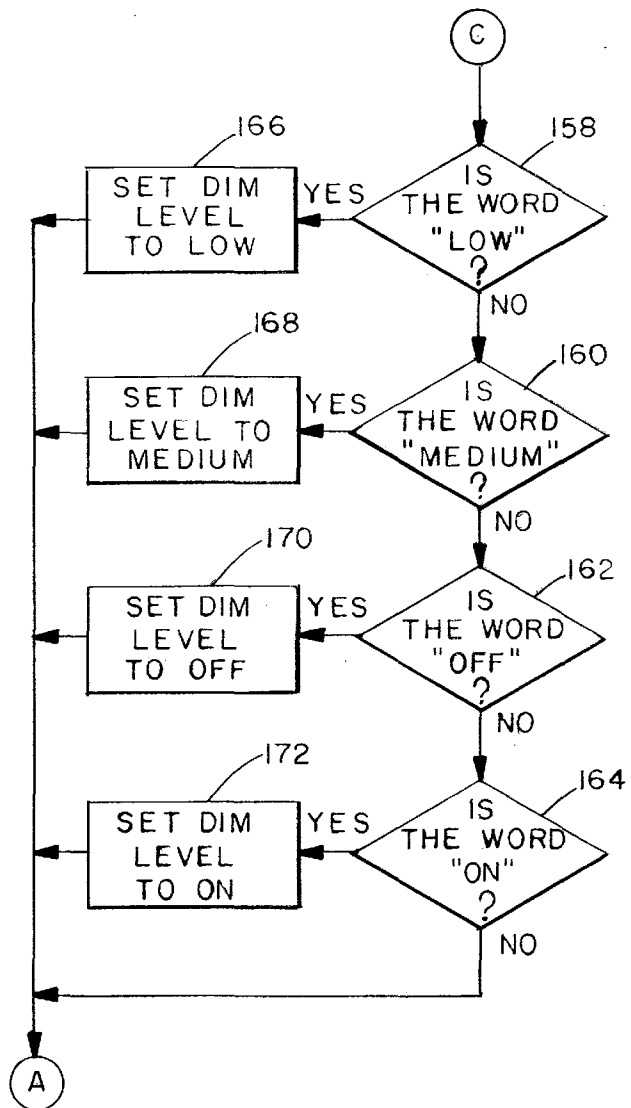


FIG. 3C

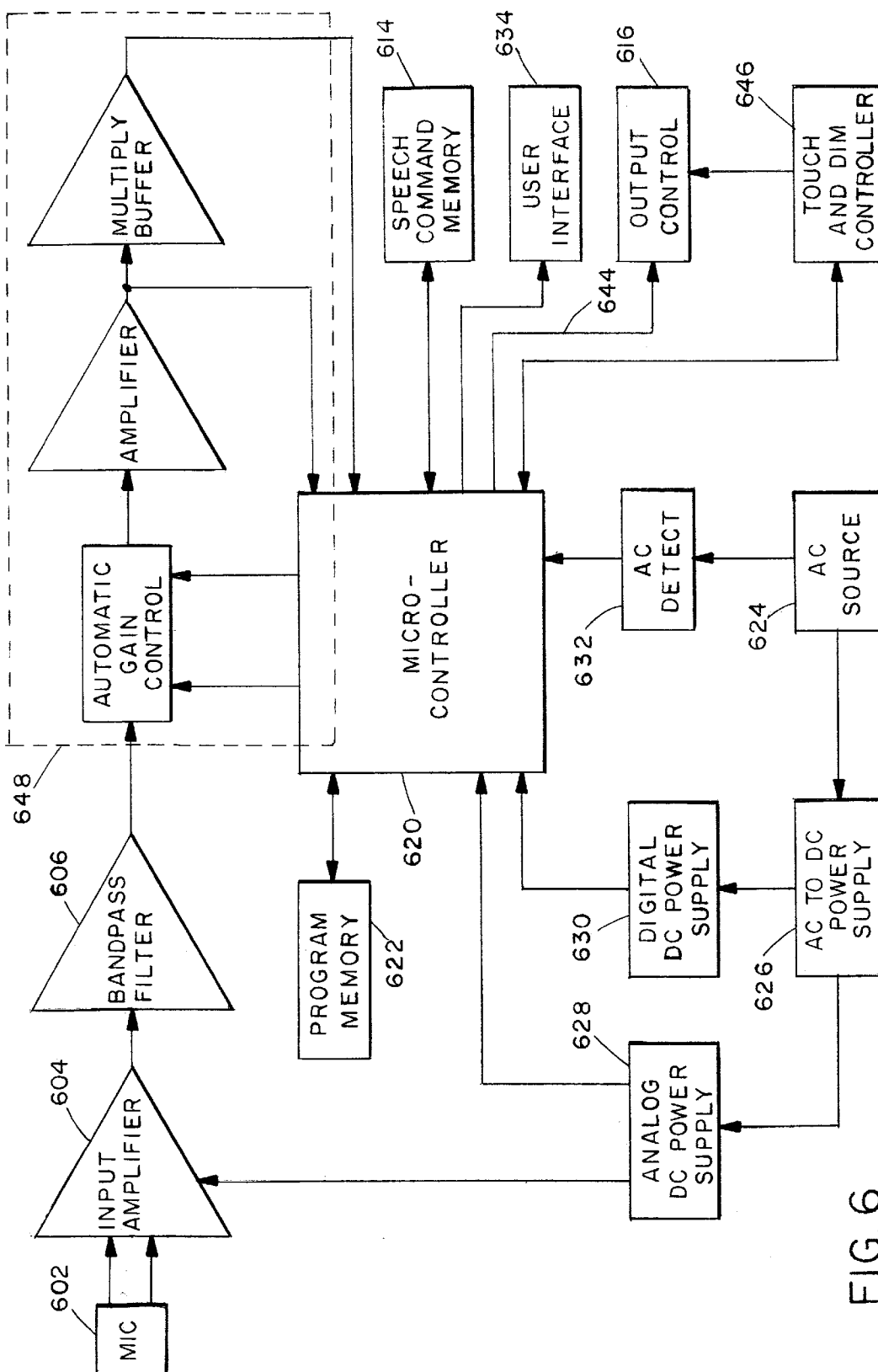
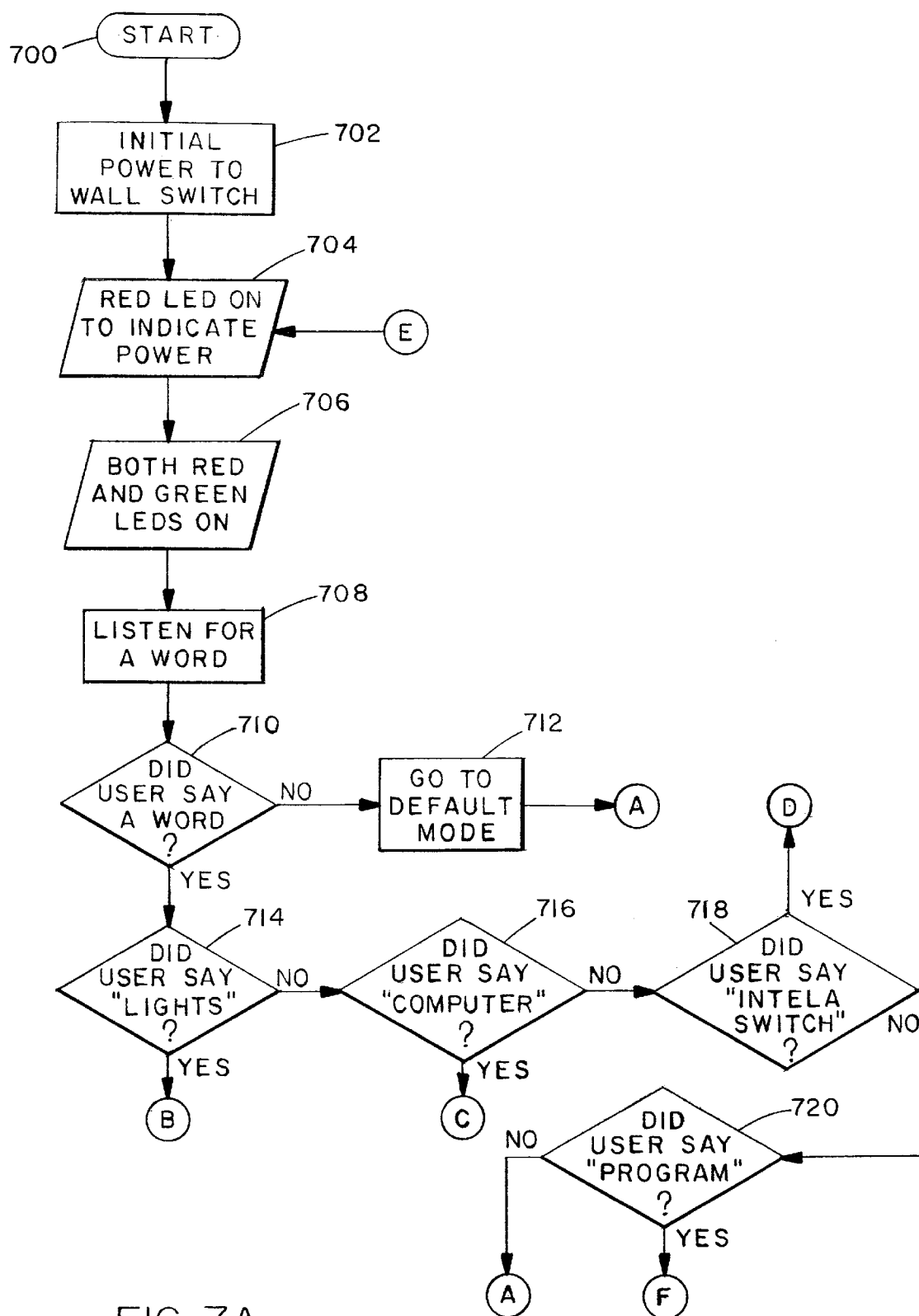


FIG. 6



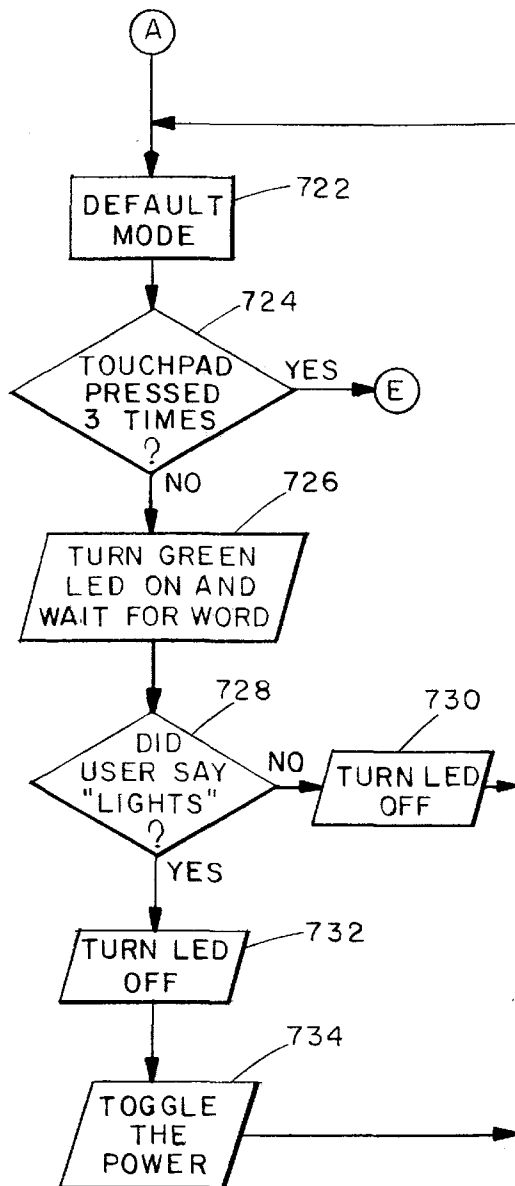


FIG. 7B

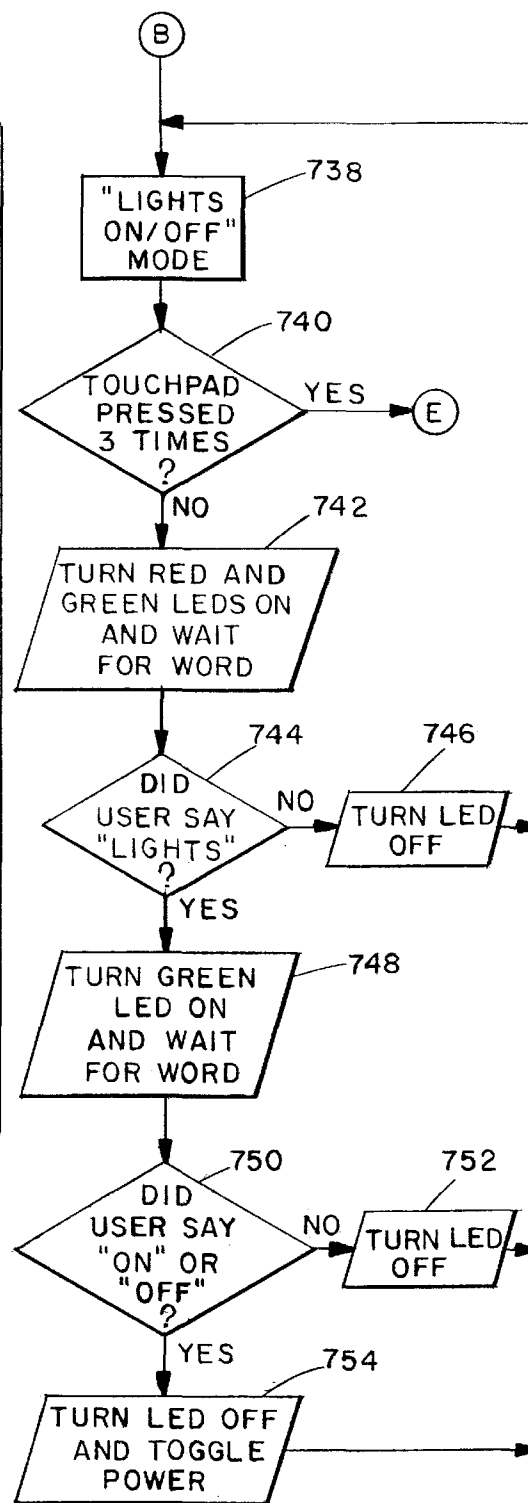


FIG. 7C



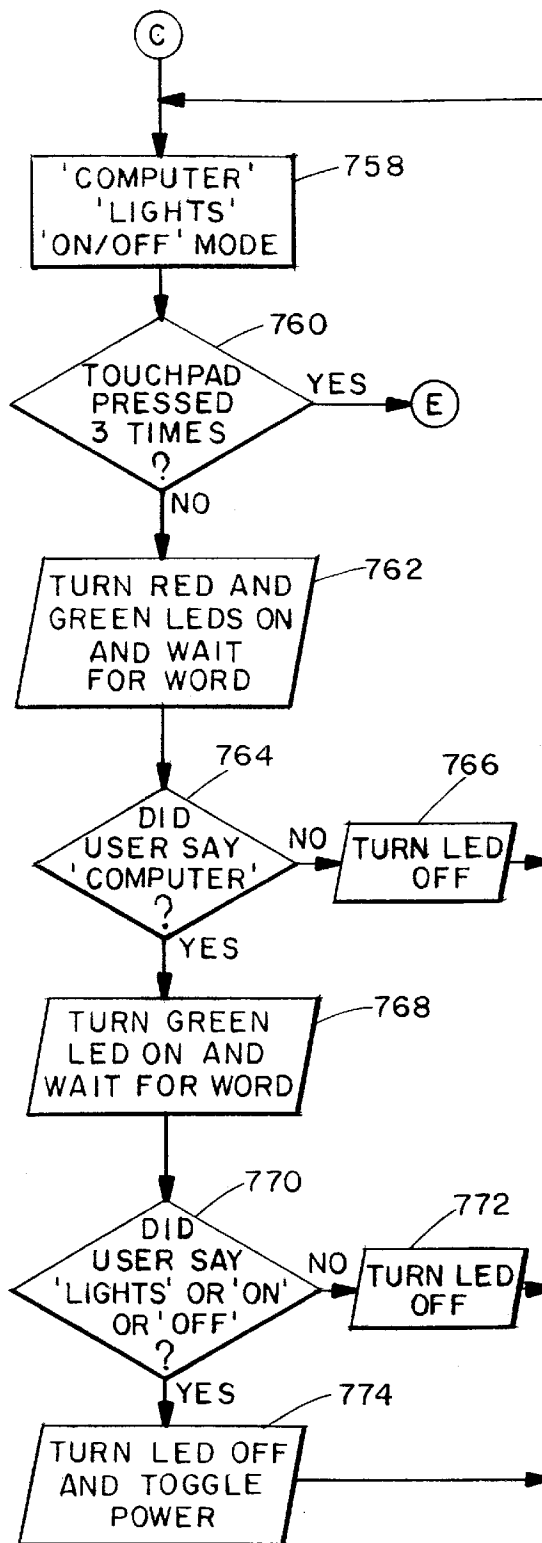


FIG. 7D

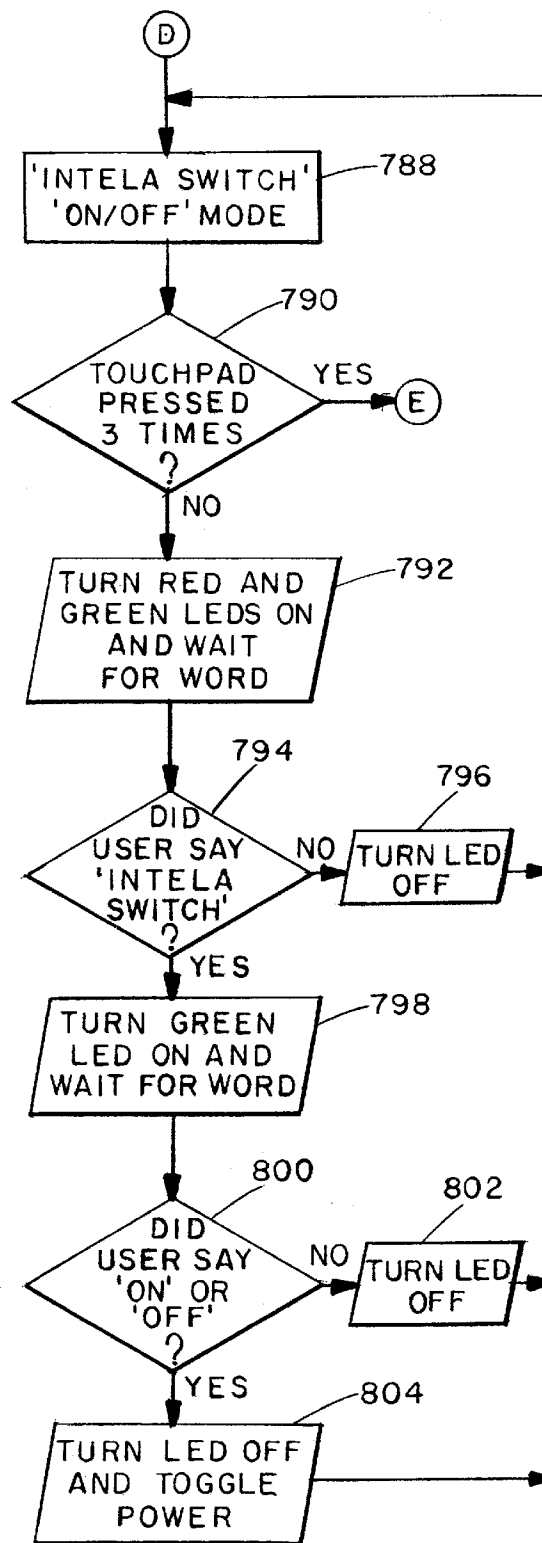


FIG. 7E

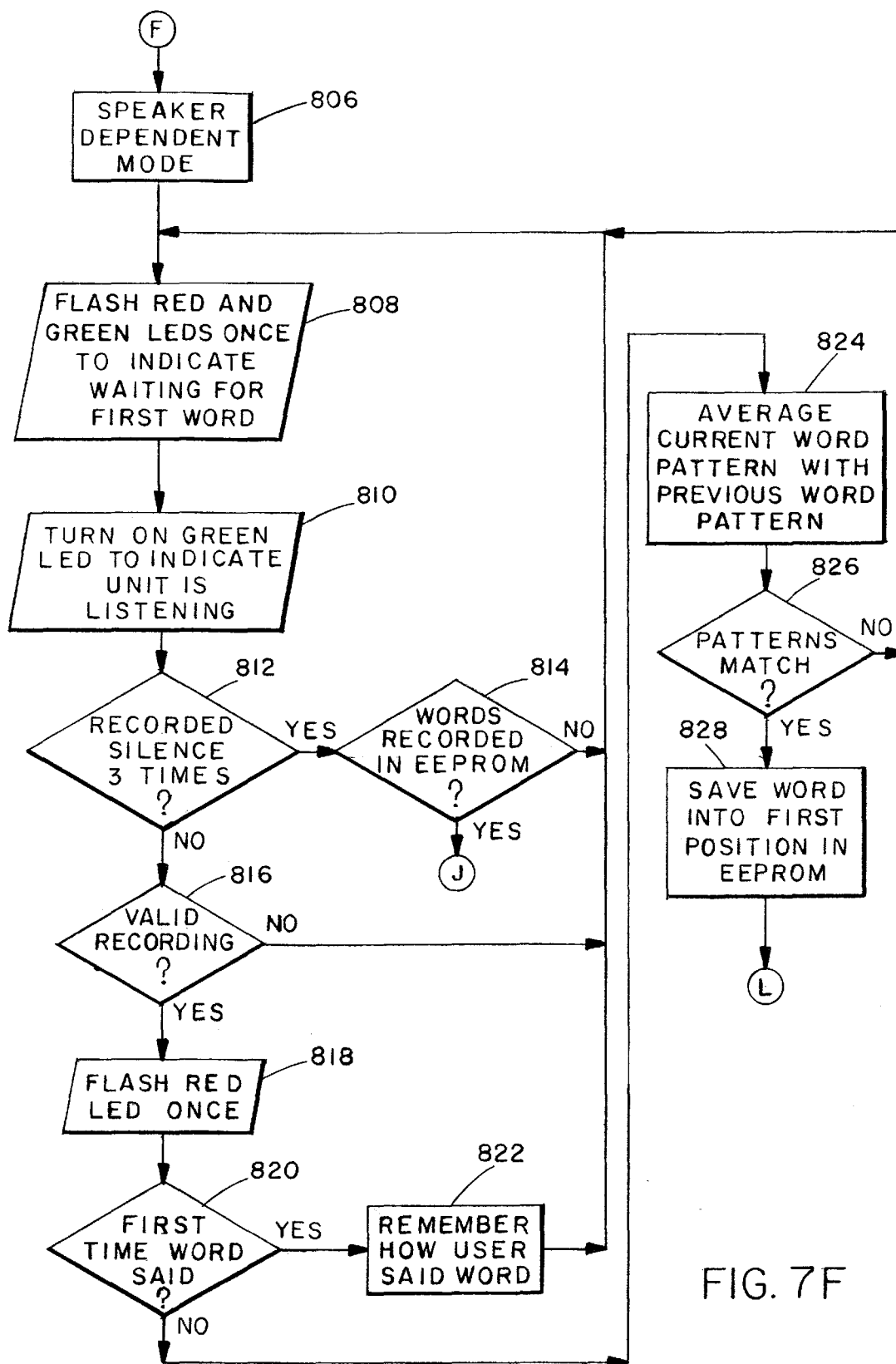


FIG. 7F

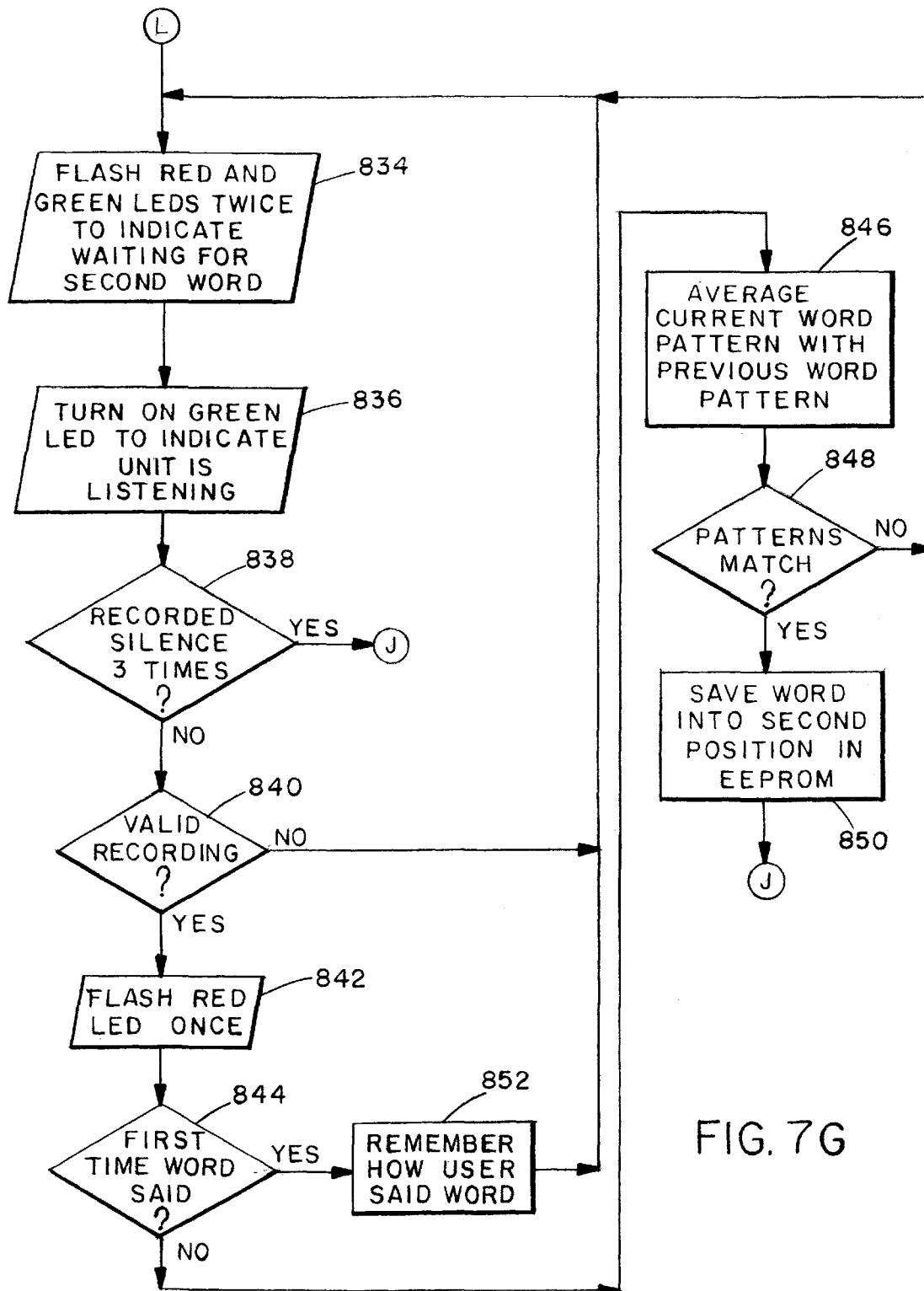


FIG. 7G

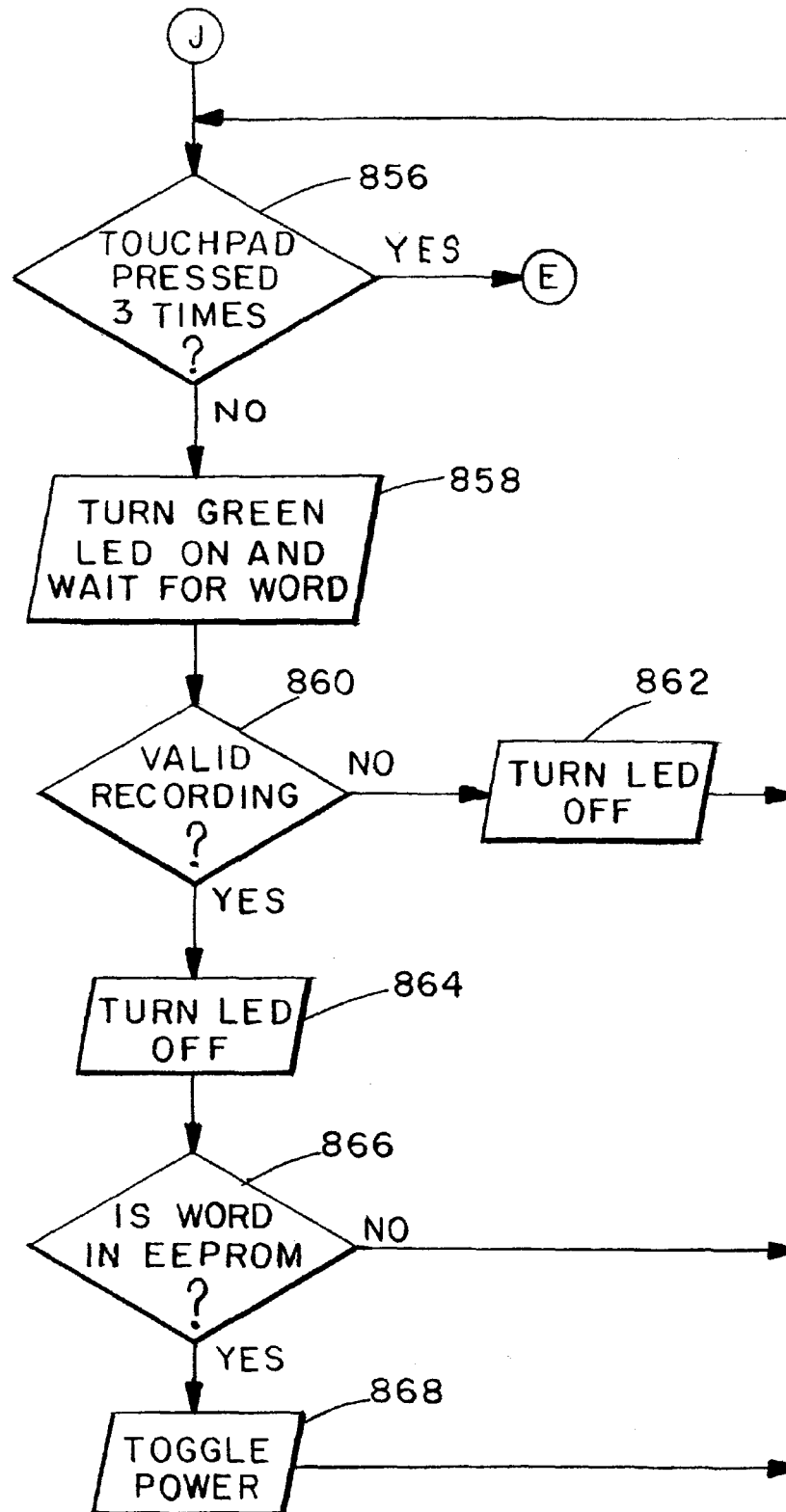


FIG. 7H

## VOICE ACTIVATED SWITCH METHOD AND APPARATUS

This is a continuation-in-part of application Ser. No. 09/002,436, filed Jan. 2, 1998, now abandoned.

### FIELD OF THE INVENTION

This invention relates generally to voice activated devices for producing control signals, and more specifically to a voice activated switch for producing control signals to switch on or switch off AC electrical devices.

### BACKGROUND OF THE INVENTION

The use of speech recognition technology is becoming a viable means to control one's environment. As the sophistication of speech-activated technology increases and the cost of the associated hardware and software decreases, the use of speech-controlled devices will be commonplace. Applications for speech recognition technology are numerous and include the control of appliances, consumer electronics, toys, and tools. Products and services employing speech recognition are developing rapidly and are continuously applied to new markets.

The use of speech recognition is ideal wherever the hands and/or the eyes are busy. Speech commands are a quick, hands-free way to control electrical devices. The dangers associated with walking into a dark room, or the inconveniences of interrupting tasks in order to turn on appliances or lights, are alleviated by the utilization of speech recognition technology.

Speech recognition technology has been in development for more than 25 years resulting in a variety of hardware and software tools for personal computers. In a typical application, a speech recognition circuit board and compatible software programs are inserted into a computer.

These add on programs, which operate continuously in the background of the computer's operating system, are designed to accept spoken words and either execute the spoken command or convert the words into text. The disadvantage in using this approach to control individual appliances is the necessity of one or more computers. Also, it is unlikely that manufacturers will add full blown computer systems to control appliances such as washing machines or electronic products such as stereos. Computer controlled systems that utilize speech recognition have been employed to control the appliances and electronics throughout a house or building, however, these systems are expensive, complicated, and require custom installation.

Remotely controlling an electrical appliance is currently possible using devices employing a variety of technologies. Products using acoustic signals are available on the market to control electrical appliances. These devices recognize specific sounds such as claps, and respond by toggling power switches. One drawback of utilizing an acoustic device is that it does not provide "hands-free" control. Also, the user must remember an acoustic code, such as a sequence of claps, for each appliance.

Another way to control an appliance is by the utilization of a remote control. Remote control units utilizing speech recognition have been designed for electronic products such as VCRs. The speaker talks into a control unit while depressing a switch, and the speech commands are recognized and transmitted to the VCR using infra-red signals. Although this system offers a means for the remote control of electronics, it does not offer a hands-free solution. Additionally, the user

must have the remote control unit with him or her, and each target appliance must be adapted to receive IR signals.

Similar to any developing technology, speech recognition poses many hurdles, including designing the most effective user interface, and increasing response accuracy. A non-friendly user interface is likely to frustrate the user when non-responsiveness of the device is the only indication of a recognition error. Another difficulty involves extemporaneous conversations and sounds that may falsely trigger a device response. Speech recognition devices have attempted to overcome this problem by allowing a very limited number of speech commands such as "ON" and "OFF." However, these devices must be programmed with the voices of the speakers that will use the device, and do not anticipate noisy environments in which the device is required to distinguish between the speaker and other noises. Also, the limited vocabulary allows the utilization of one device per room, unless the speaker desires to turn on all appliances at the same time.

The current technology for the remote control of electronic consumer products fails to provide a hands-free, economical, compact, and easy-to-use device. Additionally, available designs do not offer solutions for inaccuracy due to false response, user frustration, and ambient noise interference. These problems and deficiencies are clearly felt in the art and are solved by the present invention in the manner described below.

### SUMMARY OF THE INVENTION

It is an advantage of the present invention to provide a compact, stand alone, speech recognition circuit to control a variety of electrical devices, including consumer electronic products or appliances without the need for a host computer.

It is another advantage to provide an easy-to-use device that is programmable to recognize a variety of command words so that more than one device can be utilized within one room.

It is yet another advantage of the present invention to provide a low-cost replacement for a standard wall switch and switch box for speech control of electrical devices connected to the wall switch circuit.

It is still another advantage to provide a portable speech recognition interface between a standard AC outlet and an electrical device.

A further advantage of the invention is to provide a speech recognition device that incorporates user interfaces for confirming acceptance of speech commands thereby increasing recognition accuracy while reducing the necessity for training the user.

In a preferred embodiment of the present invention, a stand-alone, programmable speech recognition device acts as a control interface between a 120 V or 230 V AC switch and a connected electrical appliance or light. In a preferred embodiment ("wall switch embodiment"), the voice activated control circuitry is designed to fit into a switch box shell that can be installed in place of a standard wall switch.

In an alternate preferred embodiment ("outlet embodiment"), the voice activated control circuitry is encased in a portable, palm-sized shell that can be plugged into a standard outlet.

In a wall switch embodiment, the speech recognition circuitry of the invention is contained on a circuit board having dimensions to fit within a standard wall switch box. The circuit board has connections for user interfaces including input leads for a microphone for accepting a voice

3

command, a manual switch controller for accepting manual operation of the switch, and at least one light-emitting diode ("LED").

The manual switch controller provides a manual means for operating the switch, and operates in cooperation with the speech recognition circuitry. A variety of technologies can be utilized for the manual switch including rocker switches, actuator-type controls, pushbuttons and touch plate technology. The preferred embodiment utilizes capacitance touch plate technology that is known in the art.

The speech recognition device operates in a continuous listening mode which allows it to actively listen for sounds at all times. Ideally, the device is located in a position that is exposed and not hidden behind an object such as a piece of furniture. An exposed location allows a built-in microphone to pick up un-muffled sounds and speech in proximity to the device thereby increasing the response accuracy. The preferred wall switch embodiment is typically placed in a convenient location within a room and positioned at approximately four feet (122 cm) from a floor.

Thus, the microphone will be at an optimal level to accept a speaker's commands, particularly in circumstances in which the speaker is seated. Obviously, where an AC outlet or a light is controlled by more than one wall switch, a microphone of at least one of the voice activated wall switches is more likely to be in proximity to the user (speaker).

The outlet embodiment of the present invention is plugged into an AC outlet. The outlet embodiment has at least one plug for accepting the cord jack of an electrical device and may necessarily be plugged into an outlet behind an object that obstructs the line from the user to the device. Therefore, this embodiment may include a separate attachable microphone that is placed in a location most likely to maintain an unobstructed line between the microphone and the user. The use of a separate microphone allows the microphone to be placed in a convenient location that is in close proximity to the user. This is particularly useful where the environment is noisy, or where the user is disabled or has low mobility.

In other embodiments of the outlet and wall switch devices, the microphone circuit includes a receiver for receiving transmitted radio frequency signals from a separate remote microphone. These embodiments are desirable for users who cannot effectively trigger the speech recognition because they are not in proximity to the device. For example, a user who is seated in a position outside the range of the microphone will be unable to control the device. An RF receiver will provide remote speech control of the speech recognition device.

The voice-activated device is continuously listening for an acceptable speech command as long as power from the utility main is available. Thus the device is constantly processing background noises and establishing an ambient noise level. The ambient noise level is an average decibel level of the sounds in the frequency range of speech that are detected by the device. For example, a background noise level of a 50 decibel air conditioning unit causes the device to establish an ambient noise level of 50 decibels. Detected sounds below that level are ignored, and in order for the device to act upon a command word, the user must speak above that decibel level. Establishing an ambient noise level enables the device to be used in noisy environments.

Upon receiving a signal in the frequency range of speech that is louder than the ambient level, the device determines whether the signal is a valid command word. A valid

4

command word is a member of either a set of pre-programmed speaker independent words, or a set of user programmed speaker dependent words. These sets of command words correspond to two modes of operation known in the art as "speaker independent" and "speaker dependent" operation. The user has a choice of the mode of operation upon resetting the device. In the preferred wall switch embodiment of the invention, reset is activated by pressing the touch plate a specified number of times. Reset of the outlet embodiment occurs when the device is initially plugged into an outlet.

The first mode of operation is a speaker independent mode. In this mode the device can be used by various speakers and does not have to be trained to recognize individual voices. Therefore, the device is pre-programmed to respond to a large variety of speech patterns, inflections, and enunciations of the target command word. This mode of operation usually has a lower number of valid command words than a speaker dependent systems that require more memory to store the various speech patterns. In the preferred embodiments, speaker independent command words include a name of an electrical device such as "LIGHTS" followed by action command words such as "ON" or "OFF" or "DIM."

A speaker dependent mode of operation recognizes only one speaker, or a limited number of speakers at a time. The speaker dependent mode is activated by resetting and "programming" the device. After detecting a reset condition, the device listens for a request to select the speaker dependent mode, and the user follows instructions to program the command words. In a preferred embodiment the user is prompted by the device through use of a user interface which includes prompts from an indicator such as an LED, or speech instructions from the device itself, or both. The device, operating in a speaker dependent mode of operation, achieves a high accuracy of word recognition. The disadvantage to using this mode of operation is that the system response accuracy is limited to the user who programmed the valid command set.

The device limits user frustration by signaling an acceptance of a valid command word through a user interface that includes an indicator such as an LED, or a speaker for communicating speech prompts. The feedback of the user interface permits the user to adjust his or her command word enunciations and inflections which results in a higher response accuracy. Once the device recognizes and indicates acceptance of a valid command word, the user responds with an action command word such as "ON." If the action command word is within the set of valid command words, the device will respond by performing the desired action. For example, in the preferred wall switch embodiment, the device responds to the action command word by connecting power or disconnecting power to an electrical circuit that is connected to the wall switch. For applications where the action command word is meant to dim or brighten lights, the device responds by connecting AC at a reduced or increased voltage. In an alternate mode of operation, the action command word is not used, and the command word such as "LIGHTS" is repeated to toggle the lights on or off.

In another embodiment of the present invention, the device incorporates current carrier modulation techniques as disclosed in U.S. Pat. No 3,818,481 of Dorfman, which patent is incorporated herein by this reference. Using this technology, the device recognizes a variety of electrical product command words, where only one command word is valid for the attached product. Other valid command words are transmitted over the utility main to a second device

5

directly connected to the utility main or plugged into an AC outlet. The second device demodulates the command word and makes a determination of whether the command word is contained within its set of valid command words, and whether the command word corresponds to its attached product.

The present invention provides a compact, continuously listening speech recognition circuit that may be incorporated into a variety of designs including wall switches and portable outlet devices. A voice activated wall switch or wall outlet provides an improved method for controlling electrical devices. Limitations of the prior art, including the need for complex computer-controlled systems, user frustration, use in noisy environments, and limited speech command sets, are overcome by the present invention to increase response accuracy and device utility.

#### BRIEF DESCRIPTION OF THE DRAWINGS

Understanding of the present invention will be facilitated by consideration of the following detailed description of preferred embodiments of the present invention taken in conjunction with the accompanying drawings, in which like numerals refer to like parts, and in which:

FIG. 1 is a block diagram of a speech controlled device;

FIG. 2 is a perspective drawing of a portable speech activated device;

FIG. 3a is a flowchart of a minimal functionality of a programming code for a preferred embodiment of the speech control device;

FIG. 3b is a continuation of the flowchart of FIG. 3a for an on/off application;

FIG. 3c is a continuation of the flowchart of FIG. 3a for a dimmer application;

FIG. 4 is a front view of a wall switch of a preferred embodiment;

FIG. 5 is a side view of a wall switch of a preferred embodiment;

FIG. 6 is a block diagram of a speech activated wall switch;

FIG. 7a is a flowchart of a wall switch of a preferred embodiment;

FIG. 7b is a continuation of the flowchart of FIG. 7a for a default mode of a preferred embodiment;

FIG. 7c is a continuation of the flowchart of FIG. 7a for a first user independent mode;

FIG. 7d is a continuation of the flowchart of FIG. 7a for a second user independent mode;

FIG. 7e is a continuation of the flowchart of FIG. 7a for a third user independent mode;

FIG. 7f is a continuation of the flowchart of FIG. 7a for a speaker dependent mode;

FIG. 7g is a continuation of the flowchart of FIG. 7f; and

FIG. 7h is a continuation of the flowcharts of FIGS. 7f and 7g.

#### DETAILED DESCRIPTION OF THE PREFERRED EMBODIMENTS

“Speech recognition” refers to the ability of a device to recognize what words have been spoken and to take specific actions according to those words recognized. FIG. 1 is a block diagram of a preferred embodiment of the electrical components of a speech recognition device. A microphone 2 accepts and converts speech and other sounds into electrical

6

audio signals. The electrical audio signals at the output of the microphone 1 are amplified by an input amplifier 4 and fed into a bandpass filter 6. The band pass filter 6 of the preferred embodiment is designed to filter signals outside of the frequency range of approximately 580 Hz to 4.2 kHz, which represents the typical frequency range of speech.

The filtered audio signal is introduced into an automatic gain control circuit 8. The phrase “automatic gain control” usually refers to a feedback loop that accepts a varying input signal and uses feedback to maintain a constant output signal. The automatic gain control circuit 8 of the preferred embodiment operates in a different manner by supplying a continuous ambient level signal to the microcontroller 20 over a pre-determined time window. The microcontroller 20 maintains the ambient level during the time window by sending feedback signals 36, 38 to the automatic gain control circuit 8. The ambient level is used as a starting level for recognizing speech. Any background noise received by the device during the time window that is below the ambient level is ignored. After the time window has expired, the device establishes a new ambient level signal.

Establishing an ambient level is a desirable feature in noisy environments because the user need only speak above the ambient level to trigger the device. Additionally, the ambient level increases the device accuracy because the device will not falsely trigger in response to a stray or constant background noise. In the preferred embodiment, a time window has a duration in the range of 5 seconds to 1 minute, where approximately 5 seconds is an ideal duration. Obviously, the particular pre-determined time window may vary with the type of environment, and is not meant to be a limiting factor. For example, in a particularly quiet environment, the time window may be of a longer duration because changing background noises are not expected.

In the preferred embodiment, the automatic gain control loop includes the automatic gain control circuitry 8, the microcontroller 20, an amplifier 10, and a multiplying buffer 12. The output of the automatic gain control circuitry 8 is fed into an amplifier 10. The output of the amplifier 10 is fed into the microcontroller 20 and a multiplying buffer 12. Finally, the output of the multiplying buffer is also fed into the microcontroller. Thus, the “ambient level” that is sent to the microcontroller 20 consists of both a zero level 40 at the output of the amplifier 10, and a multiplied level 42 at the output of the multiplying buffer. The microcontroller 20 of the preferred embodiment of FIG. 1 is a general purpose microcontroller manufactured by Sensory, Inc.<sup>TM</sup> which is configurable for a variety of applications including speech recognition.

The microcontroller of the preferred embodiment requires the zero level 40 and the multiplied level 42 to produce feedback signals 36, 38. However, other embodiments of the invention using different microcontrollers may have differing input requirements to maintain the ambient level that is established using feedback signals 36, 38. Also, the automatic gain control circuitry 48 may be deleted from the circuit of FIG. 1 for embodiments where the microcontroller includes equivalent circuitry of the automatic gain control 8, amplifier 10, and multiply buffer 12. For such embodiments, the output of the band pass filter 6 is directly accepted by the microcontroller 20. As additional functions become available on the microcontroller 20, other circuit functions such as program memory band pass filter and input amplifier may eliminate the need for separate circuits to provide these functions.

The microcontroller circuitry includes the microcontroller 20 and a number of memory modules. The memory modules

of the preferred embodiment include the program memory **22** and speech command memory **14** which are shown external to the microcontroller **20**, but which may be internal to the microcontrollers of other embodiments of the invention. The program memory **22** is a Read Only Memory (ROM) module which stores the programming code of the microcontroller **20**. The programming code establishes the sequence of events that are followed by the device to produce a control signal **44** in response to valid speech commands. The speech command memory **14** of the preferred embodiment employs a Random Access Memory (RAM) module which stores the speaker dependent speech commands. The speaker independent speech commands are stored in a separate memory ROM module (not shown) which may be internal to the microcontroller. The term "memory module" does not necessarily refer to separate circuit elements. For example, all ROM data may be stored in the same circuit element, but at different address block locations.

Power circuitry of the preferred embodiment which supplies analog and digital operating voltages to the device circuitry includes an AC source circuit **24**, an AC to DC power supply circuit **26**, an analog DC power supply circuit **28**, and a digital DC power supply circuit **30**. Standard utility AC is supplied to the AC source circuit **24** by means of a standard AC jack that is plugged in to a standard AC outlet **72**, as shown in FIG. 2. The device may be adapted to be compatible with a 120 V or 230 V AC standard. The AC to DC power supply circuit **26** convert the standard utility AC to DC voltages which are fed into the analog DC power supply circuit **28** and the digital DC power supply circuit **30**. The analog DC power supply circuit **28** supplies power to the input amplifier **4** and the microcontroller **20**. The Digital DC power supply supplies digital voltages to the microcontroller **20**.

Standard utility AC is also supplied to an AC detect circuit **32** which is connected to the microcontroller **20** and the output control circuit **16**. Upon recognition of a valid speech command, the microcontroller sends a control signal **44** to the output control circuit **16**. The control signal **44** enables or disables a connection of the standard utility AC into the output control circuit **16**. In the preferred embodiment, the output control circuit **16** includes a power switch that connects the standard utility AC to a standard AC plug.

For applications where the device is used as a dimmer, the AC detect circuit **32** synchronizes an AC signal with the standard utility AC to produce an AC waveform having an increased or decreased voltage. The AC waveform is connected to the output control circuit **16** by the control signal **44** upon recognition of a valid speech command.

In a second embodiment of the invention the output control circuit **16** has modulation capability and can modulate and transmit a control signal on the standard utility AC via the AC source circuit **24** using current carrier technology as described herein. This capability allows the device to remotely control electronics and appliances that are connected to the same standard utility AC circuit. The AC detect circuit may also include a demodulator to detect and demodulate a signal from the standard utility AC. The demodulated signal is sent to the microcontroller **20** for a determination of whether the demodulated signal represents a valid speech command for an electrical appliance that is attached to the device. If the signal is a valid speech command, control signal **44** is sent to enable the output control circuit **16**.

The user interface circuit **34** of the preferred embodiment is connected to the microcontroller **20** and includes an

indicating device such as an LED, or a speaker, or both. The user interface circuit **34**, which is provided as a convenience for the user and does not affect the operation of the device, informs the user that the device has received either an invalid or a valid speech command. Without the visual or audio feedback, the user can not be certain of the reason for a non-response of the device. For example, the user may not be enunciating the command correctly, or may be using an invalid speech command. Thus, the user feedback lessens frustration and leads to an increase in correct device responses.

The indicating device includes at least one LED which may be uni-or multi-colored to prompt the user, signal an unrecognized command, and/or signal acceptance of a valid command. The indicating device may also include a display or another means of visually indicating the completion of an event. The speaker is connected to the microcontroller **20** via amplifier circuitry known in the art and provides a means for communicating spoken instructions or audio prompts which are stored in a memory module of the microcontroller **20**. Obviously, a combination of an LED and a speaker will provide the highest degree of user convenience.

FIG. 2 is a perspective view of one embodiment of a speech activated device. The device consists of a shell **60** that houses the speech recognition circuitry of FIG. 1, and is designed to be compact and self-contained such that the entire device plugs into a utility outlet **72**. The shell contains several openings for components of a speech recognition circuit, and may include openings for an indicating device **64**, a speaker **70**, a microphone **62**, a microphone plug **68**, a standard AC utility plug **66**, and a standard utility jack (not shown) which plugs into the utility outlet **72**. The electronic product or appliance cord **74** is plugged into a standard AC utility plug **66** which is located on a face of the shell **60**.

The program stored in the program memory **22** of FIG. 1 varies to accommodate the available device features and the desired mode of operation. FIG. 3a is a flowchart of functionality of a sample programming code of a preferred embodiment and is not meant to limit the possible programming possibilities. Start block **100** represents the initial power-up of the device after it has been plugged into the utility outlet **72** shown in FIG. 2. The start block **100** may also include additional routines such as a mode of operation routine that prompts the user to record valid speech commands for a speaker dependent application. If user response is not forthcoming, the device defaults to a speaker independent mode of operation. Once the microcontroller **20** has established the operating parameters set forth in the start block **100**, the microcontroller **20** proceeds to configure its input/output (I/O) ports. The I/O configuration is predetermined and will vary with the parameters chosen in the start block **100**.

The indicating device **64** has a default value, and for the minimal preferred embodiment, the default is an "off" state in which the indicating device **64** is not illuminated. Whether the indicating device **64** is "on" or "off" to indicate an active listening state is a matter of preference, and in an alternate embodiment, the indicating device **64** is illuminated as the default mode to indicate that the device is actively listening.

Block **104**, which is the default block for most of the decisions blocks of the subsequent programming code, sets the indicating device into an "off" state. The first expected command word, which may be one of a set of first expected command words, is retrieved in block **106**. The device waits for a pre-determined silence period of block **108**. If there are no sounds which are within the frequency of speech and



above an ambient level for the duration of the silence period, then the silence is acceptable **110** and the device waits for a first speech utterance **112**. If the silence is not acceptable, the program defaults to the default block **104** and restarts the above process.

The silence period is a required limitation of the technology, and as the technology improves, the silence period will approach zero. Technology that requires the program to pause in-between words is referred to as discrete speech or isolated speech technology. Discrete speech recognition systems can only recognize words that are spoken separately. In contrast, continuous speech technology does not require phrases of natural speech to be broken into distinct words separated by silences. The device of the preferred embodiment employs discrete speech technology with a silence period on the order of 0.01 to 0.07 seconds. This silence period will vary according to the microcontroller **20** employed.

Block **112** represents the continuously listening feature of the device, and the first utterance does not have to occur within a set time period. Once an utterance occurs the signal, which is received through the microphone **2**, is recorded in block **112**. If an acceptable recording has occurred **114**, then the duration of the word is checked **116**. An acceptable recording **114** is a recording which contains data within the frequency range of speech, and a duration **116** is the actual time that it took to utter the word. Typical durations of words are known because the acceptable command words are from a pre-determined set. Thus, the utterance can be no longer than the longest valid command word. If the utterance is longer than the longest valid command word **118**, the program defaults to default block **104**, otherwise, the utterance is compared to the words included in the set of valid command words.

The set of valid command words of the minimal preferred embodiment includes the word "LIGHTS." If the recorded utterance of block **112** favorably compares with the pre-recorded samples of the word "LIGHTS" **122**, then the device has found a positive match, and proceeds to retrieve the second word values **124** which constitutes a desired action such as "ON" or "OFF" or "LOW." The silence level is initialized in block **126**, and has a minimum decibel level equal to the ambient noise level that is determined over a time window. The device listens for an acceptable silence level for a pre-determined time duration **128**, and illuminates the indicating device. If the silence period is of an acceptable time duration **132**, then the device records the second utterance **134**. An acceptable recording **136** and utterance duration **138,140** advances the program sequence to a point of recognizing the word **142**. If the duration of the silence period or the recording is unacceptable, or the duration of the word is too long, then the program defaults to block **104**, and the indicating device is turned off and the process starts again.

FIGS. **3b** and **3c** are continuations of the program flowchart in FIG. **3a**. FIG. **3b** represents the program for a simple "ON" or "OFF" application, and FIG. **3c** describes the program flow for a light dimmer application. In the application of FIG. **3b**, if the second utterance is "ON" **144**, and a switch included in the output control circuit **16** is open **148**, then a control signal **44** is sent to the output control circuit **16** to close the switch **150**. The closed switch connects standard utility AC to a utility plug. The program returns to the default block **104**, turns off the indicating device, and waits for a new sequence of speech commands. If the utterance is not "ON" **144**, then the utterance is compared to the pre-recorded word "OFF" **152**. If the utterance is deter-

mined to be a match **152**, then a determination is made regarding whether the switch of the output control circuit **16** is closed **154**. If the switch is closed **154**, a control signal **44** is sent to the output control circuit **16** to open the switch and disconnect AC power from the utility plug **156**. All other outcomes return the program to the default block **104**.

The continuation of the flowchart for a light dimmer application is illustrated in FIG. **3c**. The utterance is compared to pre-recorded words including "LOW" **158**, "MEDIUM" **160**, "OFF" **162**, and "ON" **164**. If a match is identified, control signal **44** is sent to the output control circuit **16** to close **166**, **168**, **172** or open **170** the switch. Also, the microcontroller **20** communicates with the AC detect circuit **32** to send a reduced or increased AC voltage level **166**, **168** to the output control circuit **16**. A non-matching utterance defaults the program to the default block **104**.

FIGS. **1**, **2**, **3a**, **3b**, and **3c** illustrate a preferred embodiment of a portable, generally palm-sized speech recognition device. The preferred embodiment is plugged into a standard wall socket and includes at least one AC plug for accepting the cord/jack of any AC operated device. The speech recognition device is an economical solution to controlling electrical devices by speech commands.

FIGS. **4** and **5** illustrate another preferred embodiment wherein voice activated control circuitry is housed in a wall switch assembly **200** that includes a switch plate **210** and switch box **218**. FIG. **4** illustrates a front view of a wall switch plate **210**. The preferred wall switch embodiment utilizes a capacitance touch plate **202** as the manual switching control. Other embodiments may utilize other touch pad technologies or mechanical switches. The switch plate **210** also includes a microphone **206** for accepting speech commands. The user interface of the preferred embodiment utilizes a green LED **208** and a red LED **204** to prompt the user and to indicate that the device is actively listening for a speech command. Other embodiments of the voice activated wall switch may utilize varying user interfaces including one or more LEDs of varying colors, one or more multi-colored LEDs, a character display device, a speaker for audio prompts, or any combination thereof. Standard switch plate screws **220** secure the switch plate **210** to the switch box **218**.

FIG. **5** is a cross section of the wall switch assembly **200**. The switch box **218** houses a power circuit board **212** and a speech recognition circuit board **216** connected by at least one connector **222**. In the preferred embodiment of the voice activated wall switch, the connector **222** includes connections for power signal lines and control signal lines. An aluminum base plate **214** provides structural support for the components of the switch box assembly **200**. In addition, the aluminum plate **214** may act as a heat sink for various components on the power circuit board **212** by including wings or tabs that extend from the aluminum plate **214** to contact the power components.

The speech recognition circuit board **216** is a stand-alone item that may be incorporated into other electrical or electronic devices including various wall switch assemblies. Referring to FIG. **6**, the circuit board **216** has inputs that connect to a microphone **602** and AC source **624**, and outputs that connect to one or more user interfaces **634**, and a touch and dim controller **646** or any other suitable manual switch. Thus, the speech recognition circuit board **216** may be adapted to a particular application by connecting the inputs and outputs to appropriate components.

FIG. **6** is a block diagram of a preferred embodiment of a speech recognition circuit board **216** and externally con-

nected components for a voice activated wall switch assembly **200** as shown in FIGS. **4** and **5**. The purpose and operation of the elements of the block diagram of FIG. **6** are substantially similar to the elements of the block diagram of FIG. **1**. The microphone **602** connects to an input to the speech recognition circuit board **216** and converts speech and other sounds to electrical audio signals. The electrical audio signals are amplified by an input amplifier **604** and filtered by a band pass filter **606** to exclude frequencies outside the frequency range of speech.

An automatic gain control circuit **648** accepts the filtered audio signal from the band pass filter **606** and establishes an ambient noise input level for microcontroller **620**. In other embodiments, the automatic gain control circuit **648** may be included in the microcontroller **620** allowing the output signal from the band pass filter **606** to be directly connected to the microcontroller **620**. The power circuitry of the preferred embodiment resides on the power circuit board **212** as shown in FIG. **5**. The power circuitry includes an AC source input circuit **624**, an AC to DC power supply circuit **626**, an analog DC power supply circuit **628**, a digital DC power supply circuit **630**, and an AC detect circuit **632**. The AC source input circuit **624** is directly connected to an AC circuit provided to the wall switch. In other embodiments, portions of the power circuitry may reside on the speech recognition circuit board **216**.

The microcontroller circuitry includes the microcontroller **620**, program memory **622**, and speech command memory **614** which are shown external to the microcontroller **20**, but which may be internal to microcontrollers of other embodiments of the invention. The program memory **622** is a Read Only Memory (ROM) for storing programming code of the microcontroller **620**. The program memory **622** or an additional ROM stores speaker independent words. The speech command memory **614** of the preferred embodiment stores speaker dependent speech commands that are programmed by a user into the device during a programming mode.

The user interface **634** of the preferred embodiment of the voice activated wall switch assembly **200** includes a green LED **208** and a red LED **204** as illustrated in FIG. **4**. Other embodiments may include a single LED, or any other type of indicator that is controllable by the microcontroller **620**. The user interface **634** provides visual prompts for the user to indicate that the circuit is operating and accepting speech commands or programming mode inputs of speaker dependent commands.

Output control signal **644** is generated by the microcontroller **620** for instructing the output control circuitry **616** to switch power on or off, to toggle power, or to reduce power, i.e. dim lights. The output control circuitry **616** of the preferred embodiment is located on the power circuit board **212**, and is connected to the speech recognition circuit board **216** via the connector **222**. It should be noted that the division of circuitry between the speech recognition circuit board **216** and the power circuit board **212** is a matter of design convenience, only. Other embodiments of the voice activated wall switch may vary the locations of the electrical components.

The voice activated wall switch has a manual touch and dim controller **646** that includes the touch pad **202** of FIGS. **4** and **5** for manually controlling a switch located in the output control circuitry **616**. The speech control and the touch control are simultaneously active. In addition, the current state of the power is known by the microcontroller **620**. For example, if an electrical device, e.g. a light, is "ON," then pressing the touch pad **202** will toggle the power

"OFF." If a user subsequently uses a speech command "LIGHTS," the power is switched "ON."

FIGS. **7a** through **7h** illustrate a flow diagram for the microcontroller program ("the program") of a preferred embodiment of the voice activated wall switch. Referring to FIG. **7a**, start blocks **700** and **702** represent an initial application of AC power to the wall switch circuitry that occurs during installation of the device. A red LED **204**, as shown in FIG. **4**, is illuminated **704** to indicate that the device has power. The green LED **208** is also illuminated **706** to indicate that the device is listening for a word **708**. If the user does not issue a speech command **710**, then the program branches to a default mode **712**. If the user utters a user independent command as shown in decision blocks **714**, **716**, **718**, then the program branches to the appropriate mode of operation. The command "PROGRAM" **720**, causes the microcontroller **620** to initiate a programming mode to learn user dependent commands. An unrecognizable command, i.e. a command that is not in microcontroller memory, causes the program to branch to default mode **722** shown in FIG. **7b**.

FIG. **7b** illustrates a Default Mode **722** of the wall switch of the preferred embodiment. The microcontroller **620** determines whether the user has pressed the touch pad three times **724** for the purpose of resetting the mode of operation. Other embodiments of the program may use a different mode reset requirement, e.g. two quick presses to the touch pad rather than three. As described herein, a single press to the touch pad toggles the state of the applied AC power to "on" or "off." In the preferred embodiment of the voice activated wall switch, three presses to the touch pad cause the program to branch to the start of the mode selection sequence, block **704** of FIG. **7a**. If a reset condition is not detected, the green LED **208** is illuminated **726**, and the voice activated device waits for a command word. If the user says the command "LIGHTS" **728**, the green LED **208** is turned off and the microcontroller **620** sends a control signal **644**, as shown in FIG. **6**, to the output control circuit **616**, to toggle the power **734**. Upon toggling the power in block **734**, the program loops back to the start of default mode **722**.

A Lights On/Off Mode is illustrated in FIG. **7c**. The program checks for a reset condition **740**. If the user has not initiated a reset, the green LED **208** and the red LED **204** illuminate **742** to indicate that the voice activated device expects to receive an acceptable first word. Any detected word other than "LIGHTS" **744**, causes the program to branch to the start of the Lights On/Off Mode **738**. If the word "LIGHTS" is detected **744**, the green LED **208** is illuminated **748** to indicate that the device expects to receive a second acceptable word, "ON" or "OFF" **750**. If the device does not detect either acceptable word **750**, the program branches to the start of the Lights On/Off Mode **738**. If the device detects either the word "ON" or "OFF" **750**, the green LED **208** is turned off and the power is toggled accordingly **754**.

FIG. **7d** illustrates the user independent Computer Lights On/Off Mode **758**. Absent a reset condition **760**, the device illuminates both LEDs **204**, **208**, and waits for an acceptable first word **762**. If the word "COMPUTER" is detected **764**, the green LED **208** is illuminated **768** to indicate that the device is waiting for a second word, "LIGHTS," "ON," or "OFF" **770**. Upon detection of an acceptable word, the green LED **208** is turned off and the power is toggled accordingly **774**.

FIG. **7e** also illustrates a user independent mode in blocks **788** through **804**. If the user does not reset the mode **790**, the

13

LEDs illuminate **792**. The first expected word is "INTELSWITCH" **794** and the second expected word is either "ON" or "OFF" **800**. If the words are not detected in the appropriate order, the program turns off the illuminated LEDs **796, 802** and branches to the start of the mode **788**. An acceptable sequence of commands causes the microcontroller **620** to send a control signal **644** to switch the power either "ON" or "OFF" **804**.

The program flowchart of the preferred embodiment of a voice activated wall switch illustrates a default mode and three additional user independent modes. The words used as command words for these illustrative modes are not meant to be limiting, and other words and sequences of words may be programmed into program memory.

FIGS. **7f, 7g,** and **7h** illustrate the flowchart for a speaker dependent mode **806**. The red and green LEDs **204, 208** are flashed once to indicate that the device is waiting to record the first word **808**. The green LED **208** is then illuminated to indicate that the device is listening for the first word **810**. If the device has not recorded a third silence period **812**, then the program determines whether an acceptable recording has occurred **816**, and either branches to the start of the user dependent mode **808**, or indicates a valid recording **818** by flashing the red LED **204**. Upon detection of a third silence period, the program checks whether words have been recorded in memory **814**. If memory contains user dependent words, the program branches to wait for a user dependent command. If the recorded word is the first recording **820**, the program stores the word pattern in a temporary memory **822** and branches to **808** to prompt the user to repeat the word. If the recorded word is the second or greater recording **820**, the program compares the currently recorded word with the previously recorded word **824**. If the word patterns match **826**, then the first word is saved in memory **828**. If the word patterns do not match **826**, the program branches to **808** to prompt the user to repeat the command word until the user can repeat the word in a substantially similar manner.

FIG. **7g** is a continuation of the user dependent programming mode. Once a first word has been successfully recorded, the LEDs are flashed to indicate that the device is waiting for a second word **834**. The green LED **208** is illuminated to indicate that the unit is ready to record the second word **836**. If a silence period is recorded three times **838**, then the program branches to detect a valid command word. If a valid word pattern is recorded **840**, the red LED **204** flashes once **842**. If the user has not repeated the word **844**, the word is recorded in a temporary memory **852**, and the program branches to the beginning of the sequence to record a second word **834**. If the user has repeated the word at least once **844**, the program compares the current word pattern with the previously recorded word pattern **846** to determine whether a match exists **848**. If the patterns match **848**, the user has successfully programmed the second word which is stored in a second position in memory **850**.

Once a sequence of user dependent commands is successfully recorded, the device is ready to respond to user dependent commands as illustrated in the flowchart of FIG. **7h**. If a reset condition is not detected **856**, the device illuminates the green LED **208** to indicate that it is waiting to accept a command **858**. If a speech command is successfully recorded **860**, the LED is turned off **864** and the program determines whether the word is a valid user dependent word. If the word is recorded in memory **866**, the power is toggled **868**. Otherwise, the program loops back to **856** to await a valid user dependent command.

The flowchart of FIG. **7h** illustrates a minimal example of recognizing a single user dependent word. However, the

14

other embodiments of the program may require a sequence of words before the power is toggled **868**. The other embodiments of the program may also respond according to a particular command such as "DIM" or "ON" or "OFF." Thus, the flowchart is presented for illustrative purposes and is not meant to limit the breadth of the microcontroller program.

It is evident that there are additional embodiments which are not illustrated above but which are clearly within the scope and spirit of the present invention. The above description and drawings are therefore intended to be exemplary only and the scope of the invention is to be limited solely by the appended claims.

We claim:

1. A method for controlling a wall switch in response to a sequence of speech commands from a user, said wall switch having an input of standard utility AC and an AC output switch connected to an AC circuit, said method comprising the steps of:

- (a) accepting environmental sounds and speech sounds from the user;
- (b) converting said environmental sounds and speech sounds into a plurality of electrical signals;
- (c) filtering said plurality of electrical signals that are outside a range of speech to produce at least one filtered electrical signal;
- (d) comparing said at least one filtered electrical signal with a set of user dependent and user independent speech sounds to determine whether a first valid command has been uttered;
- (e) prompting the user to utter a second valid command upon determining that said first valid command has been uttered;
- (f) repeating steps (a) through (c) and comparing said at least one filtered electrical signal with said set of user dependent and user independent speech sounds to determine whether said second valid command has been uttered;
- (g) producing at least one output signal upon determining that said second valid command has been uttered; wherein said at least one output signal controls said AC output switch.

2. The method for controlling a wall switch as in claim 1, further comprising the step of:

toggling said AC output switch utilizing a manual control means.

3. The method for controlling a wall switch as in claim 2, wherein said step of toggling said AC output switch comprises the step of:

pressing a touch pad.

4. The method for controlling a wall switch as in claim 1, wherein the step of prompting the user comprises the step of:

illuminating at least one indicator to indicate a ready state for accepting said sequence of speech sounds.

5. A wall switch device for placement in a standard wall switch receptacle area, the wall switch device for switching standard utility AC to an AC circuit said wall switch device comprising:

a power circuit having means for producing a plurality of operating voltages for said wall switch device from the standard utility AC;

a microphone circuit having means for producing electrical signals in response to a plurality of sounds comprising background sounds and a plurality of valid speech commands;

## 15

a filter circuit having means for filtering said electrical signals, said filter circuit producing filtered electrical signals having frequencies within a frequency range of the plurality of valid speech commands;

a controller circuit comprising:

- a detection means for detecting a sequence of valid speech commands from the plurality of valid speech commands, said microcontroller having a plurality of inputs comprising the filtered electrical signals and a plurality of outputs comprising at least one control signal for controlling a switching means; and
- at least one indicator connected to said detection means for prompting said user to utter a next valid speech command in the sequence of valid speech commands;

said switching means for connecting said standard utility AC to said AC circuit upon detection of said sequence of valid speech commands; and

a manual control input circuit for manually controlling said switching means.

6. The wall switch device of claim 5, further comprising a dimmer circuit having means for producing a reduced-voltage AC signal, wherein the switching means connects the reduced-voltage AC signal to the AC circuit in response to the sequence of valid speech commands.

7. The wall switch device of claim 5, further comprising:

- a means for producing speech instructions; and
- at least one speaker means for outputting said speech instructions for prompting the user to utter the sequence of valid speech commands.

8. The wall switch device of claim 5, wherein the sequence of valid speech commands is speaker independent.

9. The wall switch device of claim 5, wherein the controller circuit further comprises a mode means for choosing a mode of operation from a plurality of modes of operation.

10. A device for switching standard utility AC to an electrical appliance, the device comprising:

- a switching circuit comprising:
  - a microphone circuit for receiving sounds and converting said sounds into electrical signals, said microphone circuit having an input amplifier for amplifying said electrical signals, and a band pass filter for filtering sounds outside a frequency range of speech, said band pass filter outputting a filtered signal;
  - means for producing at least one ambient level signal from said filtered signal;
- a processor circuit having an input of said at least one ambient level signal, said processor circuit comprising:
  - means for producing at least one AC control output signal upon recognition of said valid speech command of a set of valid speech commands;
- at least one indicator controlled by the processor circuit for prompting the user to utter said valid speech command;
- a power circuit for supplying digital and analog power to an AC switch, said power circuit having an AC input of said standard utility AC; and
- said AC switch controlled by the AC control output signal for connecting the standard utility AC to the electrical device; and
- a portable frame for holding said switching circuit.

11. The device as in claim 10, wherein said portable frame is a palm-sized casing, said palm-sized casing comprising:

- a first surface comprising the at least one indicator;
- a second surface comprising an AC receptacle for accepting a standard AC jack of the electrical device; and

## 16

a third surface comprising an AC utility jack for plugging into an AC wall plug.

12. The device as in claim 10, wherein said frame is a replacement casing designed to replace an AC wall plug.

13. The device as in claim 10, wherein said valid speech command comprises a prompting command and an action command, said processor circuit illuminating said at least one indicator after receipt of said prompting command to prompt the user to utter said action command.

14. The device as in claim 10, wherein said microphone circuit further comprises a microphone jack for attaching an external microphone.

15. The device as in claim 10, wherein said band pass filter filters out said received sounds outside a frequency range of 580 Hz–4.2 kHz.

16. The device as in claim 10, further comprising a speaker circuit for communicating speech instructions from said processor circuit.

17. The device as in claim 10, wherein said AC switch further comprises a dimmer circuit for reducing a voltage level of the standard utility AC.

18. A method for controlling an AC switch using speech recognition, said AC switch having an input of standard utility AC, and an AC receptacle for accepting a standard AC plug of an electrical device, said method comprising the steps of:

- accepting environmental sounds and speech sounds;
- converting said environmental sounds and speech sounds into a plurality of electrical signals;
- filtering said plurality of electrical signals that are outside a range of speech to produce at least one filtered electrical signal having a decibel level;
- setting a threshold level;
- waiting for a pre-set time period during which said threshold level is above said decibel level of said at least one filtered electrical signal;
- accepting said at least one filtered electrical signal having said decibel level above said threshold level;
- comparing said at least one filtered electrical signal with a predetermined set of speech sounds;
- if the at least one filtered electrical signal matches a valid speech sound of the predetermined set of speech sounds, then prompting a user to utter a second speech sound from the predetermined set of speech sounds; and
- producing at least one output signal when said second speech sound matches said predetermined set of speech sounds;
  - wherein said at least one output signal controls a switching circuit for switching the standard utility AC to the plug of the electrical device.

19. The method for controlling an AC switch as in claim 18, further comprising the steps of:

- waiting for a second pre-set time period;
- comparing a second filtered electrical signal with a second set of speech sounds; and
- producing a second output signal when said second filtered electrical signal matches said second set of speech sounds.

20. The method for controlling an AC switch as in claim 18, wherein the step of prompting the user further includes the step of:

- illuminating an indicator.

21. A portable switch device for switching standard utility AC to an electrical device in response to a plurality of valid

17

speech commands, the portable switch device having a standard AC plug for connection to a standard AC wall receptacle, and a standard AC receptacle for accepting a plug of the electrical device, said portable switch device comprising:

a power circuit having means for producing a plurality of operating voltages for said portable switch device from the standard utility AC;

a microphone circuit for receiving a plurality of sounds comprising background sounds and the plurality of valid speech commands;

a filter circuit having means for filtering said plurality of sounds having frequencies within a frequency range of the plurality of valid speech commands;

a controller circuit comprising:

a detection means for detecting a valid speech command of the plurality of valid speech commands, said controller circuit having a plurality of inputs comprising the filtered electrical signals and a plurality of outputs comprising at least one control signal for controlling a switching means;

a mode determination means for operating said controller circuit in a mode of operation of a plurality of modes of operation in response to a mode command of the plurality of valid speech commands;

the switching means for connecting said standard utility AC to said electrical device; and

18

at least one indicator connected to and controlled by said controller circuit, said at least one indicator for prompting said user to utter said valid speech command.

22. The portable switch device of claim 21, further comprising a dimmer circuit having means for producing a reduced-voltage AC signal in response to one of said first or second valid speech commands, wherein the switching means connects the reduced-voltage AC signal to the AC circuit in response to the valid speech command.

23. The portable switch device of claim 21, further comprising:

a means for producing speech instructions; and

at least one speaker means for outputting said speech instructions for prompting the user to utter a valid speech command of the plurality of valid speech commands.

24. The wall switch device of claim 21, wherein the plurality of modes of operation comprises a speaker independent mode requiring a pre-programmed valid command.

25. The wall switch device of claim 21, wherein the plurality of modes of operation comprises a gated mode of operation requiring a sequence of valid speech command of said plurality of valid speech commands.

\* \* \* \* \*