

Declaration of Rachel J. Watters on Authentication of Publication

I, Rachel J. Watters, am a librarian, and the Director of Wisconsin TechSearch (“WTS”), located at 728 State Street, Madison, Wisconsin, 53706. WTS is an interlibrary loan department at the University of Wisconsin-Madison. I have worked as a librarian at the University of Wisconsin library system since 1998. I have been employed at WTS since 2002, first as a librarian and, beginning in 2011, as the Director. Through the course of my employment, I have become well informed about the operations of the University of Wisconsin library system, which follows standard library practices.

This Declaration relates to the dates of receipt and availability of the following:

**Fossum, E.R. (June 1993) Active-pixel sensors challenge CCDs.
Laser Focus World 29(6), p. 83-87.**

Standard operating procedures for materials at the University of Wisconsin-Madison Libraries. When a volume was received by the Library, it would be checked in, stamped with the date of receipt, added to library holdings records, and made available to readers as soon after its arrival as possible. The procedure normally took a few days or at most 2 to 3 weeks.

Exhibit A to this Declaration is true and accurate copy of *Laser Focus World*, June 1993 issue from the University of Wisconsin-Madison Library collection. Exhibit A includes a scan of the issue’s cover, showing the library date received stamp. Exhibit A also includes an excerpt of pages 83 to 87 of that issue, showing the article entitled

Declaration of Rachel J. Watters on Authentication of Publication

Active-pixel sensors challenge CCDs (June 1993). Based on this information, the date stamp on the journal title page indicates *Active-pixel sensors challenge CCDs* (June 1993) was received by the Kurt F. Wendt Library, University of Wisconsin-Madison on June 15, 1993.

Based on the information in Exhibit A, it is clear that the volume was received by the library on or before June 15, 1993, catalogued and available to library patrons within a few days or at most 2 to 3 weeks after June 15, 1993.

I declare that all statements made herein of my own knowledge are true and that all statements made on information and belief are believed to be true; and further that these statements were made with the knowledge that willful false statements and the like so made are punishable by fine or imprisonment, or both, under Section 1001 of Title 18 of the United States Code.

Date: December 6, 2019

Wisconsin TechSearch
Memorial Library
728 State Street
Madison, Wisconsin 53706



Rachel J. Watters
Director

A PennWell Publication

Laser Focus World

GLOBAL ELECTRO-OPTIC TECHNOLOGY AND MARKETS

June 1993

Focus on
material processing

- Excimer lasers for industry
- Back to Basics: Ruby lasers
- Improved flashlamps find new applications
- Optical isolators benefit advanced fiber systems

Laser generates prototype
of aircraft throttle system

*****WORKING
2500048615 0601939 010194#20
KURT F WENDT LIBRARY 866565
COLL OF ENG 665930 0005 06
UNIVERSITY OF WISCONSIN
215 N RANDALL AVE
MADISON WI 53706-1605

Special pullout section
Detector Handbook

FEATURES

TECHNOLOGY GUIDE: DETECTORS

- 77** Manufacturers turn detector chips into imaging systems
Heather W. Messenger
- 83** Active-pixel sensors challenge CCDs
Eric R. Fossum
- 89** Multiplexers help get the light out
Paul K. Gallagher
- 95** Thermal imaging answers the question: How hot is hot?
Benkt Linnander
- 101** Micromachined bolometer arrays allow low-cost imaging
R. Andrew Wood and Norman A. Foss
- 109** Near-IR imaging cameras operate at room temperature
Marshall J. Cohen and Gregory H. Olsen

FOCUS ON MATERIAL PROCESSING

- 126** Rapid prototyping speeds product development
Laser-based processes shorten product-design cycles.
David A. Belforte

INDUSTRIAL LASERS

- 135** Will kilowatt excimer lasers become industrial tools?
Government-sponsored research has resulted in 1-kW excimer lasers for material processing.
Marc Stehle

EXCIMER LASERS

- 143** Military excimer laser seeks real-world uses
Are e-beam-pumped excimer lasers with multijoule outputs ready for commercial development?
Daniel W. Trainor

BACK TO BASICS: RUBY LASERS

- 151** Ruby lasers are still on the job
Ruby lasers keep working in holography and dermatology.
Jeff Hecht

FLASHLAMPS

- 159** Versatile arc lamps evolve for industrial applications
High-intensity arc lamps light industrial processes.
Yvonne A. Carts

OPTICAL ISOLATORS

- 167** Advanced fiberoptic systems rely on special isolators
Fiber isolators neutralize backreflection without polarization-induced effects.
J. J. Pan, Ming Shih, and Kung Shih

WORLD NEWS

9 Newsbreaks

- 15** Space and astronomy offer commercial E-O opportunities
- 15** Ti:sapphire regenerative amplifier produces "white-light" continuum
- 16** Silicon-based optoelectronics: myth or reality?
- 20** Integrated optics shine in Europe
- 24** Eye-safe lidar measures winds ahead of shuttle
- 26** Trained neural network recognizes faces
- 30** Niche applications highlight lasers in medicine conference
- 33** Metallic-vapor-deposited structures reach nanometer dimensions
- 35** Laser switches FLC display
- 38** Laser 93 spotlights industrial and medical applications
- 40** Ultrafast Ti:sapphire laser produces two colors with low jitter
- 45** New LCD makes switchable holograms
- 48** Exciplex lasers emit 2-ps pulses
- 52** From joules to jewels
- 57** Laser Industry Report
- 59** Optics Industry Report
- 61** Fiberoptics Industry Report

DEPARTMENTS

5 The Editor's Desk

55 Design & Applications

Finding the rotten apple

62 Marketwatch

Continuum's niche-market strategy

65 Washington Report

How Clinton will fund R&D

67 Comment

Beware of broadband complacency

71 Letters

173 Computers & Software

Easyplot produces versatile graphs

175 Technology Update

176 New Products

196 Books

197 Calendar

198 Advertising Index

199 Sales Offices

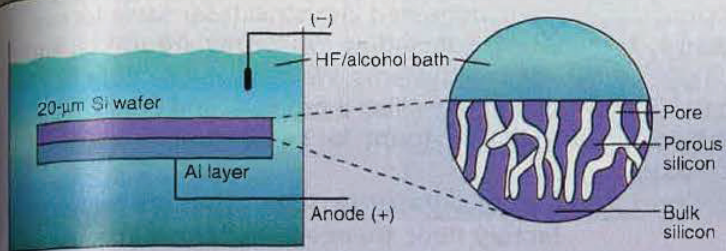
200 Editorial

So what if engineers can't talk or write?

This issue of *Laser Focus World* includes, for European subscribers only, a special supplement, *European Report on Lasers for Material Processing*.

Cover: Model of a throttle control system for the McDonnell Douglas MD90 aircraft was made by stereolithography process. See p. 126. (Photo courtesy of 3D Systems Inc.)

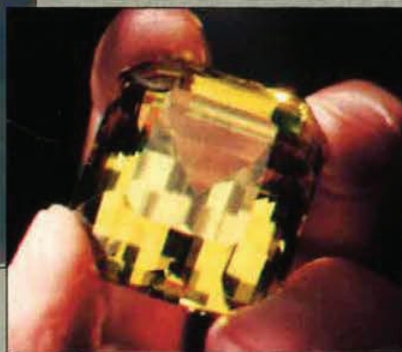
Imaging systems: see pullout Detector Handbook following p. 72.



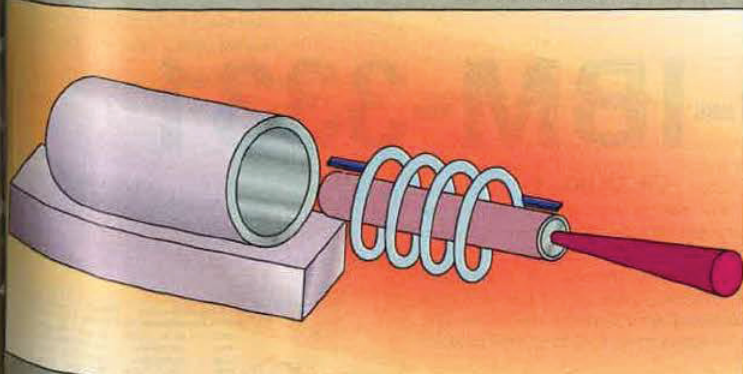
Silicon-based optoelectronics: see p. 16.



Water jewels: see p. 52.



Back to Basics: Ruby lasers: see p. 151.



Active-pixel sensors challenge CCDs

With random access, non-destructive readout, and easy integration with on-chip electronics, active-pixel sensors may supplant CCDs in imaging applications.

Eric R. Fossum

The active-pixel sensor (APS) is a new type of sensor device emerging from the most advanced image-sensor research and development laboratories in Japan. These sensors may one day supplant charge-coupled devices (CCDs) in many imaging applications. A CCD relies on the shifting of charge to read out the image. In contrast, an APS acts similarly to a random access memory (RAM) device, wherein each pixel contains its own selection and readout transistors. The signal readout then takes place over metallic wires rather than by shifting charge, giving the APS advantages such as random access, nondestructive readout, and integrability with on-chip electronics.

This article looks at active-pixel sensors within the framework of current CCD operating characteristics. It summarizes activities in various laboratories and describes applications for APS devices, such as high-definition television (HDTV) and imaging systems for high-radiation environments.

CCD versus non-CCD image sensors

Charge-coupled devices were invented around 1970 at AT&T Bell Telephone Laboratories (Murray Hill, NJ). Since then, CCDs have become the primary technology used in scientific image sensors. The technology is complex, even

ERIC R. FOSSUM is a research technologist and assistant manager, Imaging Systems Section, Jet Propulsion Laboratory, Pasadena, CA 91109.

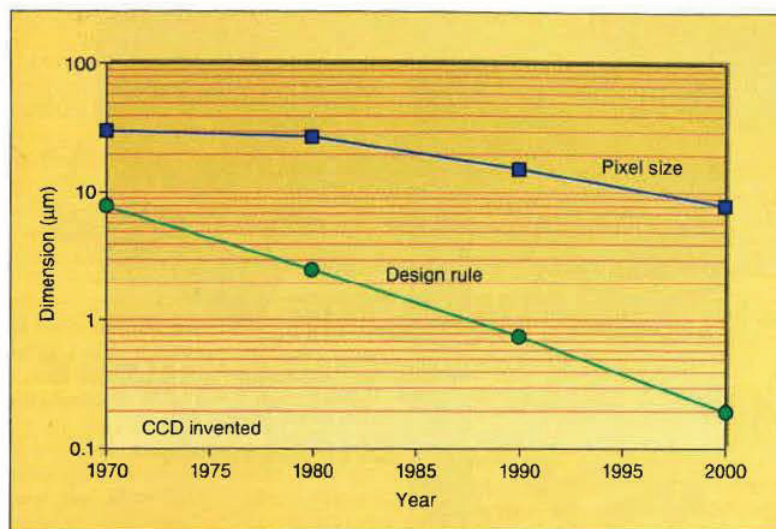


FIGURE 1. Logarithmic chart of device feature size versus pixel size tracks the advance of microlithographic technology. Future miniaturization trends call for higher resolution from APS devices.

for students of semiconductor device physics. Readers interested in CCD operation are referred to texts by Yang¹ or Tompsett.²

Various non-CCD-based image sensor technologies are also on the market, including the photodiode array, the charge-injection device (CID), and hybrid infrared image sensors. The first two have large input-referred noise floors, typically several hundred electrons (rms) for a single read; they are not covered in this article.

Hybrid infrared sensors could, in principle, be adapted for visible use. The hybrid approach, in which a detector is bump-bonded, pixel by pixel, to a readout multiplexer is an expensive technology and is limited in size to approximately 512 × 512 formats. Typical noise floors of such hybrid focal-plane arrays are in the 30 electrons rms range.

In the active-pixel sensor, several active transistors are monolithically

integrated in the pixel for readout purposes. These transistors are used for pixel readout selection and for amplifying or buffering the pixel output signal. Twenty years ago, an active-pixel sensor with a practical pixel size was not possible because of microlithography limitations. The technological push of the semiconductor industry has since driven microlithography to the submicron regime, and 1.25-μm CMOS is practically an industry standard.

In the 1970s, CCDs were attractive because only three electrodes/pixel were required for operation and a 30-μm pixel was possible. Today, the fundamental advantage CCDs had over any other imaging technology has been eclipsed by the shadow of microlithography fabrication. Pixel size is now determined more by scientific imaging optics than by microlithography constraints. Thus, a new window of opportunity exists to take advantage of microlithography advances because the

digital microelectronics industry, driven by needs for speed and miniaturization, continues its inevitable evolution (see Fig. 1).

CCD strengths and weaknesses

The virtues of the CCD include its high sensitivity, high fill-factor, and large-format capability. High sensitivity fol-

lows from a net quantum efficiency of around 40%, the high fidelity of CCD readout, the low-noise-output amplifier (typically, five electrons rms). The high fill factor of a CCD pixel (80%–100%) arises because the metal-oxide-semiconductor (MOS) photodetector is also used for signal readout. The large format of CCDs—typically 1024×1024 ,

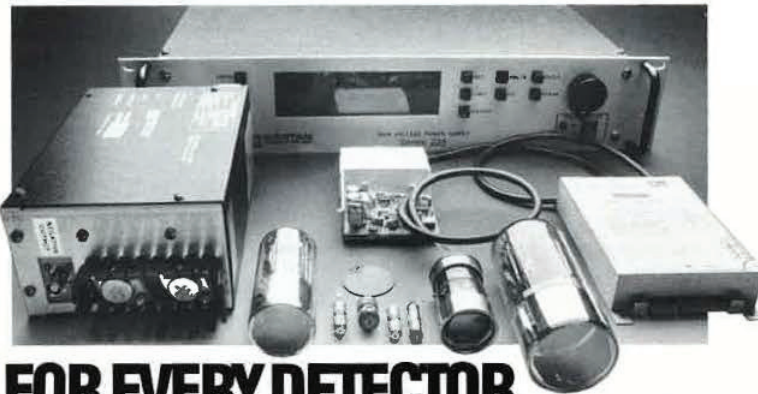
but it can be as large as 5120×5120 —is possible because of the concurrent drive of semiconductor memory-chip manufacturers to improve silicon wafer quality and fabrication yield.

The need for nearly perfect charge transfer is the Achilles' heel of CCD technology; it is also fundamental to the device operating principle. The CCD relies on the transfer of charge (usually electrons) from under one MOS electrode to the next through sequencing of voltages on the electrodes. The electrons are transported through the bulk silicon material over macroscopic distances—up to centimeters—before reaching the output sense node. A typical CCD has three electrodes/pixel, so in a 1024×1024 imager, the electrons may be shifted, on the average, several thousand times. The ratio of electrons successfully transferred to the number left behind per electrode is the charge-transfer efficiency (CTE). The CTE of a CCD needs to be as close to 100% as possible for acceptable scientific performance. A single defect in bulk silicon can trap electrons and degrade the efficiency.

For example, if the CTE is given by η , the net fraction of signal transferred after m transfers is simply η^m . Thus, if a CCD is operating with a CTE of 0.9999 (1 electron lost out of 10,000), then a typical pixel signal in a 1024×1024 image sensor undergoes a fidelity degradation of nearly 20% by the time it reaches the output amplifier.

Because this performance is unacceptable in most applications, large-format CCDs have been developed within CTEs ranging from 0.99999 to 0.999999. For a CCD charge packet of 1000 electrons, a CTE of 0.99999 implies that only one electron is lost for every 100 transfers. It is remarkable that CCDs have been developed with such a high level of transfer efficiency and that the number of defects in a silicon wafer has dropped to essentially zero.

The need for nearly perfect charge transfer leads to a number of performance weaknesses in CCD technology. For example, CCDs are susceptible to bulk radiation damage. In space applications, CCD image sensors are continuously bombarded by energetic particles and photons, which can cause significant bulk displacement damage. Damaged silicon traps electrons and reduces transfer efficiency. Typical dose tolerance for a scientific CCD is around 10 krad, depending somewhat on the source. Radiation softness of CCDs is a significant issue for long-duration plan-



FOR EVERY DETECTOR, A HIGH VOLTAGE POWER SUPPLY THAT MATCHES PERFECTLY.

Bertan is the world leader in detector high voltage power supplies and can meet virtually every detector requirement, from lab to OEM. We can give you everything from regulated modules that are as inexpensive as unregulated supplies, to highly regulated instruments. Whichever you choose, you can be sure you're using the industry's standard for performance and reliability. In fact, we have MTBF success stories that others only dream about.

What's your application?

Photomultiplier tubes, proportional counters, avalanche photo diodes? Microchannel plates, channel electron multipliers or image intensifiers? Call Bertan because nobody knows high voltage power supplies like Bertan. Our units are being used across the board in research and industry. This unparalleled experience means that our people can help you get the best match of power supply to detector application. Ask for our free 102 page reference manual and catalog, "High Voltage Power Supply Solutions". Call or write. Toll free: **800-966-2776**. In NY: 516-433-3110. Fax: 516-935-1766. Bertan High Voltage, Hicksville, NY 11801.

THE MATCH MAKERS.



BERTAN
THE HIGH VOLTAGE PEOPLE™

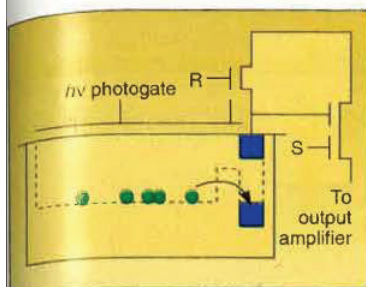


FIGURE 2. Schematic of a simple CMOS-compatible APS shows the charge integration relationship between the photogate, the selection transistor S, and the reset transistor R. The output signal from each pixel is the change in voltage levels at the output node.

etary instruments and certain earth orbits, as well as in many terrestrial applications such as x-ray and electron imaging.

To get high transfer efficiency, CCDs are often driven with relatively large voltages (by microelectronics standards). They also represent high-enough capacitance loads to driving electronics to make on-chip integration of clocks and drivers nearly impractical. Yet, on-chip integration is the key to achieving future camera miniaturization.

The CCD fabrication process is quite different from the complementary metal-oxide-semiconductor (CMOS) process—the preferred technology for implementation of on-chip signal processing—creating a further impediment to miniaturization. Although some integrated CMOS/CCD processes have been demonstrated, undesirable compromises in the performance of CMOS or CCD technology must be made.

Other weaknesses that stem from nearly perfect CTE requirements include the limited spectral sensitivity range (that of silicon), the difficulty of achieving large array sizes (because CTE requirements increase with array size), the difficulty of implementing

CCDs with large pixel sizes at high data rates, and limited readout rates.

Developing APS technology

An example of a simple active-pixel sensor that resembles a short CCD is shown in Fig. 2. Charge is integrated under the photogate PG. To read out the signal, the pixel is selected using transistor S. The output node is reset using transistor R. The signal charge is then transferred from under the PG into the output node.

The change in the source-follower voltage between the reset level and final level is the output signal from the pixel. The source follower might drive a column line terminated with clamp and/or sample-hold circuits. These column-parallel circuits could then be scanned for serial readout of the sensor. Because the illustrated APS requires only a single intra-pixel charge transfer, many of the problems associated with charge transfer in CCDs are eliminated.

If implemented in 0.8- μ m CMOS, a 16 \times 16- μ m pixel could have an intrinsic fill factor of more than 50%. To improve the fill factor to the levels typically associated with CCDs, the emerging microlens technology must be used (see Fig. 3). At Jet Propulsion Laboratory (JPL, Pasadena, CA), this approach is being pursued in conjunction with on-chip analog-to-digital conversion to explore cameras-on-a-chip for future microspacecraft applications.

Much more sophisticated APS structures are being developed elsewhere in order to achieve small pixel size and high fill factors (see table). Toshiba (Kawasaki, Japan) uses a double-gate floating-surface transistor to increase the sensitivity of the output amplifier to 200 μ V/electron.³ To reduce the pixel size, the charge storage area can be located vertically under or over the readout transistor.

The presence or absence of photogenerated charge can be used to modulate the readout transistor output signal of

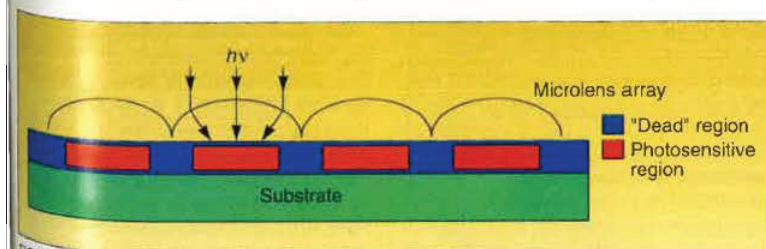


FIGURE 3: Microlenses placed directly above an APS direct more incoming photons (hv) to the photosensitive areas, thereby increasing the signal fill factor.



INFRARED VIEWERS

*For a Better View -
of the Work You Do!*

If you use IR lasers and laser diodes from 700nm to 25 μ m (e.g. GaAs, Nd:YAG, CO₂), Electrophysics can supply the devices that meet your viewing requirements.



In the lab or in the field, **Electrophysics** offers superior quality and performance in the widest selection of IR Viewing Devices available today. From the hand-held *ElectroViewer* IR Viewers, the long-wave *MicronViewer* and *PyroViewer* Systems, IR Cards, Filters and other Accessories, Electrophysics is prepared to meet your needs for alignment and analysis.

Call today and discover the advantages of our IR viewing devices . . . *for a better view of the work you do!*

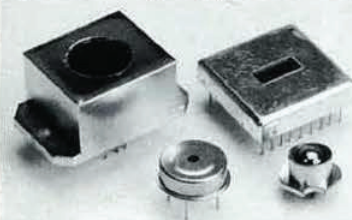
(800)759-9577



373 Route 46 West, Fairfield NJ 07004
(201)882-0211 • (201)882-0997 FAX

First Choice

In IR Detectors



Since 1946, Servo Corporation of America has been designing and manufacturing standard and custom IR thermistor, pyroelectric and laser detectors and arrays to meet an ever changing broad spectrum of commercial, industrial, military and space applications, including:

- Environmental
- Research
- Military Recon
- Space Tracking
- Position Sensing
- Process Control

State-of-the-art, microelectronic (hybrid) capabilities enable Servo's designers to be responsive to the stringent engineering and severe packaging demands of today's Hi-Rel military and rugged, space-born applications. If required, all IR detectors and EO systems can be supplied to MIL-Q-9858A and MIL-STD-2000A.

Call today for EO applications information and assistance.

servo

SERVO CORPORATION OF AMERICA
111 New South Rd., P.O. Box 1490
Hicksville, NY 11802-1490
(516) 938-9700 • Fax: (516) 938-9644

TECHNOLOGY GUIDE: DETECTOR HANDBOOK

Attributes of various APS technologies

	DGFSPT	CMD	BCMD	BASIS	SIT	CMOS APS
Developer	Toshiba	Olympus	Texas Instr.	Canon	Olympus	JPL/Caltech
APS Type	Lateral	Vertical	Vertical	Vertical	Lateral	Lateral
Output	Lateral	Lateral	Lateral	Vertical	Vertical	Lateral
Pixel size (μm)	13 × 13	7.3 × 7.6	10 × 10*	13.5 × 13.5	17 × 13.5	40 × 40
Sensitivity	200 μV/e-	250 pA/e+	15.4 μV/e-	3.5 μV/e+	3.0 μV/e+	4.0 μV/e-
Input-referred noise	0.8 e- rms	20 e- rms	15 e- rms	60 e+ rms	69 e+ rms	22 e- rms
Dynamic range	75 dB	70 dB	72 dB	76 dB	86.5 dB	76 dB
Fixed-pattern noise (p-p)	10%	5%	2%	0.03%	1.1%	<2%
Anti-blooming	Vertical	Vertical	Vertical	none*	none*	Lateral
Lag	0	0	0	<0.1%	70%	0
Comments	FPN may be reducible by read/reset/resample	Noise dominated by dark current. Improved by cooling.	*Hexagonal layout	*Can be reduced using clipping operation.	*SIT turns on	Uses 2-μm CMOS design rules.

an APS. This technique is used by Olympus (Nagano, Japan) in its charge-modulation-device (CMD) approach to APS.⁴ Texas Instruments (Tokyo, Japan) created a bulk charge-modulated device (BCMD) in a hexagonal packing format.⁵

A further reduction in pixel size is possible if the current flow in the output transistor is vertical rather than horizontal, so the substrate acts as one of the transistor terminals. Olympus uses this technique in its static induction transistor (SIT) active-pixel-sensor device.⁶ A vertical bipolar approach is used by Canon in its base-stored image sensor (BASIS).⁷

Each of these technologies has advantages and disadvantages. Fixed-pattern noise is generally a common concern but can be eliminated through on-chip signal processing. The fixed pattern noise arises due to threshold-voltage nonuniformities across a large-area image sensor. Because output amplifiers track the threshold voltage of the output transistor, an APS is sensitive to this offset pattern, but clamp circuits can be used to nearly eliminate this phenomenon.

APS applications

Numerous applications for active-pixel sensors are being explored. Some APS work is driven by HDTV; signal gain prior to readout is desirable in high-bandwidth HDTV applications. Electronic still cameras are another area of interest because the APS is more amenable to camera miniaturization and power minimization than the CCD.

Imaging systems operating in high radiation environments represent another application area of APS technology. These include laboratory and spaceborne scientific APS-based cameras, medical instrumentation, nuclear instrumentation and space-based surveillance systems.

Because APS technology simplifies region-of-interest readout, machine vision and guidance and navigation sensors are another application area. Imaging devices operating in extended spectral ranges may also benefit from the active-pixel concept. Because CCDs are notoriously hard to implement in nonsilicon materials, near-infrared and short-wavelength infrared APS devices may be easy to develop. Ultraviolet APS sensors made from materials such as sil-

icon carbide (SiC) might also be possible with the APS approach.

Admittedly, it is difficult to displace CCD technology, which has had nearly 25 years to mature, and any incumbent technology has its ardent supporters. Some operations, such as time-delay-and-integration (TDI) and pixel binning will be harder to achieve with APS devices than with CCDs.

Given the high level of performance already achieved, it is highly likely that active-pixel sensors will have a profound impact on imaging systems of the future.

The APS concept has, however, generated much discussion among domestic image sensor manufacturers. Several have already indicated an interest in exploring this emerging technology. Therefore, given the relative immaturity of APS technology and the high level of performance it has already achieved, it is highly likely that active-pixel sensors will have a profound impact on imaging systems of the future. □

REFERENCES

1. E. S. Yang, *Microelectronic Devices*, McGraw-Hill, NY, NY (1988).
2. C. Sequin and M. Tompsett, *Charge Transfer Devices*, Academic Press, NY, NY (1975).
3. Y. Matsunaga et al., *IEEE Trans. Electron Devices* 38(5), 1044 (1991).
4. M. Ogata et al., *IEEE Trans. Electron Devices* 38(5) 1005 (1991).
5. J. Hynecek, *IEEE Trans. Electron Devices* 38(5), 1011 (1991).
6. T. Mizoguchi et al., *IEEE Trans. Electron Devices* 38(5), 1021 (1991).
7. Y. Nakamura et al., *IEEE Trans. Electron Devices* 39(6), 1341 (1992).

Bulk reprints of all LFWorld articles can be ordered from June Bozarth, reprints manager, PennWell Publishing Co., at (800) 331-4463 or (918) 835-3161.

YOUR RATING, PLEASE...

Is this article of value to you? Please circle appropriate number on the Reader Service Card.

YES—367

NO—368

NEW!

CUSTOM InGaAs DETECTOR ARRAYS

Linear and 2D Focal Plane Arrays For Spectroscopy and Imaging

- 1 to 3 μm : >70% QE
- Room-temperature or TE-cooled
- 2D arrays: 128 x 128 to 512 x 512 pixels
- Linear arrays: up to 1024 pixels
: pixel heights to 2mm
- Non-standard aspect ratios
- Quick turnaround on custom designs

SENSORS UNLIMITED, INC.

3490 U.S. ROUTE 1 • Princeton, NJ 08540

Tel: 609•520•0610 Fax: 609•520•0638

CIRCLE NO. 76

Integrated Photonic Technologies



Design
Services



Photonic
Hardware



Diamond
Turning



Silicon
Detectors



Optical
Coatings



Precision
Optical
Fab.



Electro-
Optical
Systems
Assembly

SILICON PHOTODIODES

PRODUCTS

- Avalanche photodiodes (APDs)
- Position Sensing (PSDs)
- True PIN architecture
- Epitaxy
- Wavelength Selective
- UV/Blue enhanced (Alpha/Beta/Gamma)
- Pre-amps & Photonic sub-assemblies

FEATURES

- ◊ Ion-deposition process assures highly uniform sensitivity across entire radiation active area.
- ◊ Very low dark current levels.
- ◊ Minimal noise levels.
- ◊ Fast rise-times.
- ◊ 200V breakdown voltage.
- ◊ Extraordinary spectral sensitivity.
- ◊ Reflection reduction by Silicon-Nitride passivation.
- ◊ Custom modifications.
- ◊ OEM development programs, integrating optical design, optical, mechanical and electronic manufacture and sub-assembly.
- ◊ QA and customer defined testing.

Call
(802)

365
7714

or
Fax
800

338
9764



Silicon
Photonics
detector
division

PO Box 25, Townshend, Vermont 05353 USA

JANOS
TECHNOLOGY INC.

CIRCLE NO. 77

87

CIRCLE		CIRCLE		CIRCLE	
PAGE	NO.	PAGE	NO.	PAGE	NO.
A & A Opto-Electronique	196 194	FISBA - OPTIK	137 129	OE Lase	63 -
Acton Research Corporation	146 136	Fernionics	78 69	On-Trak Photonics, Inc.	90 79
Adias, Inc.	54 54	Florid Corporation	177 166,355	Ophir Optonics, Inc.	112 99
Advanced Photonix, Inc.	75 66	Focusoft, Inc.	172 161	OPTICAD Corporation	199 170
Aerotech, Inc.	6 4	Fujian Castech Crystals, Inc.	156 145	Optical Tools Meeting	184-165 -
Air Products & Chemicals	182 176	General Scanning, Inc.	33 31	Opto-Electronics, Inc.	107 94
Amber Engineering, Inc.	103 90	Gentec, Inc.	115 102	Optoelectronic Industry & Technology	154 -
Analog Modules, Inc.	187 183	Gentex Optics, Inc.	132 122-125	Oriel Corporation	110 96
Anorad Corporation	25 23	Gilway Technical Lamp	172 160	Oriel Corporation	166 154
Applied Image, Inc.	111 97	Graseby Infrared	91 80	Pear Point, Inc.	149 140
Artech House	149 141	Hadland Photonics, Ltd.	119 108	Philips Optoelectronics Centre	52,53 50-53
ARSoftware	172 159	Hamamatsu Corporation	41,100 37,88,	Photon, Inc.	130 120
Balzers Aktiengesellschaft	69 61	Hamamatsu Corporation	351-354	Photonics SA	60 56
Bay Voltex Corporation	163 153	Helima Cells, Inc.	97 85	Polytec Optonics, Inc.	130 119
Below Technology Company, Inc.	111 98	Hughes Electron Dynamics	79 70	Potomac Photonics, Inc.	162 151
Bertan High Voltage	84 73	IBM Technical	4 3	Princeton Instruments, Inc.	74 64
Big Sky Laser Technologies	20,152 13,142	ILC Technology	180 172	Radiant Dyes Laser	145 135
Blue Sky Research	197 197	ILX Lightwave Corporation	134,160 127,149	Rocky Mountain Instrument Co.	175 164
Broadband Comm. Products	168 155	Imatron, Ltd.	68 180	Rolyn Optics Company	30 28
Burleigh Instruments, Inc.	142 133	Inframetrics	94 83	Santa Barbara Research Center	123 114
Carl Zeiss	43 39	Inframatrics	94 83	Santec USA Corporation	56 65
Cincinnati Electronics Corp.	108 95	IQE	64 59	Santec USA Corporation	213,214
Cleveland Crystals, Inc.	144 134	Iswave, Inc.	170 157	Scientific Measurement Systems	196 195
Coherent Instruments	21 14-17	Janis Research Company, Inc.	78 68	Sensors Unlimited, Inc.	87 76
Coherent Laser Group	8,150 -	Janos Technology, Inc.	87 77	Servo Corporation of America	86 75
Continuum	34,35 33	Jobin Yvon	158 148	Sopra SA	122 113
Control Optics Corporation	96 84	Kaiser Systems, Inc.	32 30	Spectra Diode Laboratories	27 25
Copal Electronics U.S.A., Inc.	38 34	Kidger Optics, Ltd.	163 152	Spectra-Physics, Components	176 165
Cutting Edge Opto Electronics	120 109	Kimmon Electric	195 192	Spectra Physics Lasers	CV4 200
CVI Laser Corporation	129,181 118,173	KSV Instruments, Ltd.	58 55	Spectran Corporation	169 156
CVI Laser Corporation	186,194 182,191	LaCroix Optical Company	148 139	Speeding Systems, Inc.	48 44
DALSA, Inc.	102 89	Lambda Physik, Inc.	Insert 588	SPEX Industries, Inc.	116,117 103,104
David Sarnoff Research Center	124 115	Lambda Research Corporation	174 162	Spindler & Hoyer, Inc.	40 36
Delft Electronische Producten	46 42	Laser Drive, Inc.	29 27	Spiral Software	122 112
DigiRad	155 144	Laser Probe, Incorporated	120 110	Stanford Research Systems	12,153 7,143
Digital Instruments, Inc.	125 116	Laser SOS, Ltd.	72 201	Stellar Software	128 117
Dover Instrument Corporation	139 131	LaserMax, Inc.	114 101	Technical Manufacturing Corp.	36 32
Dukane Corporation	37 21-22	Lasertron, Inc.	70 62	Thomson D.E.N.	105 92
Dynasil Corporation of America	181 175	LaserVision GmbH	133 126	Thorn Emi Electron Tubes, Ltd.	58 193
Eagle-Picher Industries, Inc.	178 167	LASMIX	194 190	3M Specialty Optical Fibers	92 81
Edmund Scientific Company	188 185	Lee Laser, Inc.	18,194 11,189	Topometrix	184 179
EG&G Canada	44 40	Leica Mikroskope & System GmbH	117 106	Two-Six, Inc.	45 41
EG&G Electronic Components	138 130	LICONIX	131 121	Unidata	197 196
EG&G Instruments	31 29	Light Control Instruments	183 177	Union Carbide Corporation	161 150
EG&G Optoelectronics	80-81 71	Lightwave Electronics	CV3 199	Uniphase - Photronix Division	1 2
EG&G Optoelectronics Judson	121 111	Lincoln Laser Company	7 5	UDT Sensors	93 82
EG&G Ortec	23 19	Lumonics, Inc.	17 10	United Technologies Optical Sy	148 138
EG&G Princeton Applied Res.	88 78	M-A/COM Light Control Systems	104 91	Universe Kogaku, Inc.	51 48
EG&G Reticon Corporation	113 100	Maxwell Laboratories, Inc.	185 57	Vector Technology, Ltd.	193 186
Eksma Co. Lasers, Optics, Electronics	98 86	Melles Griot - Boulder	179 169	Weidmuller Sensor Systems	28 26
Electrophysics Corporation	85 74	Melles Griot	CV2,47,49	Xenon Corporation	147 137
Elight Laser Systems	68 181	Melles Griot - Irvine	179 169	Xillix Technologies Corp.	42 38
EMR Photoelectric	76 67	Melles Griot - Rochester	51 49	XMR, Inc.	136 128
Epitaxx, Inc.	82 72	Mimirad Systems, Inc.	39 35		
Epoxy Technology, Inc.	24 20	Mitchell Incorporated	181 174		
E-Tek Dynamics, Inc.	10 6	Mitsubishi Gas Chemical Co.	171 158		
Exciton, Inc.	66 60	Molelectron Detector, Inc.	157,199 146,198		
Exitech, Ltd.	118 107	MP, Inc.	106 93		
		MWK Industries	22 18		
		National Photocolour	174 163		
		NEOS Technologies	16,99 9,87		
		New Focus, Inc.	19 12		
		Newport/Klinger Corporation	14 8		
		NSG America, Inc.	26 24		
	</				

Send all orders & ad materials to: Ad Traffic Manager, *Laser Focus World*, One Technology Park Drive, POB 989, Westford, MA 01886-0989

Laser Focus World® Copyright 1993 (ISSN 0740-2511) is published monthly by PennWell Publishing Co., 1421 S. Sheridan, Tulsa, OK 74112. Second-class postage paid at Tulsa, OK 74101 and additional mailing offices. Subscription rate in the USA: 1 yr. \$104, 2 yr. \$196; European airmail: 1 yr. \$162, 2 yr. \$307; Canada and all other locations via surface mail: 1 yr. \$152, 2 yr. \$289; via airmail: 1 yr. \$249, 2 yr. \$485. Single-copy price is \$10 in the USA and \$15 elsewhere. Paid subscriptions are accepted prepaid and only in US currency. SUBSCRIPTION INQUIRIES: (918) 832-9258, 8 AM-5 PM CST (POSTMASTER: Send change of address form to Laser Focus World, Circulation Department, POB 3004, Tulsa, OK 74101.)

Officers of PennWell Publishing Co.: Frank T. Lauinger, Chairman; Joseph A. Wolk, President and Chief Executive Officer; L. John Ford, Senior Vice President; Morris R. Levitt, Senior Vice President; Raymond Leung, Vice President/Planning & Business Development; V. John Maney, Vice President/Finance; W. Steven Zimmerman, Vice President/Corporate Services. *Laser Focus World* is a registered trademark. All rights reserved. No material may be reprinted. Microfilm copies of *Laser Focus World* can be purchased from University Microfilms, 300 North Zeeb Road, Ann Arbor, MI 48106. Bulk reprints can be ordered from June Bozarth, CSR Reprints, PennWell Publishing Co., POB Box 1260, Tulsa, OK 74101; tel: (800) 331-4463 or (918) 835-3161, ext. 379; FAX: (918) 831-9497, Attn. Reprint Dept.