

DECLARATION OF GERARD P. GRENIER

I, Gerard P. Grenier, am over twenty-one (21) years of age. I have never been convicted of a felony, and I am fully competent to make this declaration. I declare the following to be true to the best of my knowledge, information and belief:

1. I am Senior Director of Content Management of The Institute of Electrical and Electronics Engineers, Incorporated ("IEEE").
2. IEEE is a neutral third party in this dispute.
3. I am not being compensated for this declaration and IEEE is only being reimbursed for the cost of the article I am certifying.
4. Among my responsibilities as Senior Director of Content Management, I act as a custodian of certain records for IEEE.
5. I make this declaration based on my personal knowledge and information contained in the business records of IEEE.
6. As part of its ordinary course of business, IEEE publishes and makes available technical articles and standards. These publications are made available for public download through the IEEE digital library, IEEE Xplore.
7. It is the regular practice of IEEE to publish articles and other writings including article abstracts and make them available to the public through IEEE Xplore. IEEE maintains copies of publications in the ordinary course of its regularly conducted activities.
8. The article below has been attached as Exhibit A to this declaration:

A.	D. Renshaw et al., "ASIC image sensors", IEEE International Symposium on Circuits and Systems, May 1-3, 1990.
----	---

9. I obtained a copy of Exhibit A through IEEE Xplore, where it is maintained in the ordinary course of IEEE's business. Exhibit A is a true and correct copy of the Exhibit, as it existed on or about December 3, 2020.
10. The article and abstract from IEEE Xplore shows the date of publication. IEEE Xplore populates this information using the metadata associated with the publication.

11. D. Renshaw et al., "ASIC image sensors", was published in IEEE International Symposium on Circuits and Systems. IEEE International Symposium on Circuits and Systems was held from May 1-3, 1990. Copies of the conference proceedings were made available no later than the last day of the conference. The article is currently available for public download from the IEEE digital library, IEEE Xplore.

12. I hereby declare that all statements made herein of my own knowledge are true and that all statements made on information and belief are believed to be true, and further that these statements were made with the knowledge that willful false statements and the like are punishable by fine or imprisonment, or both, under 18 U.S.C. § 1001.

I declare under penalty of perjury that the foregoing statements are true and correct.

Executed on: 5-Dec. 2020

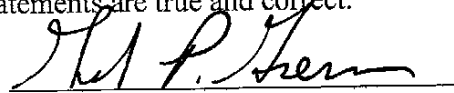


EXHIBIT A



Browse

My Settings

Help

Institutional Sign In

Institutional Sign In

All



ADVANCED SEARCH

Back to Results | Next >

Conferences > IEEE International Symposium ...

ASIC image sensors

Publisher: IEEE

Cite This

Cite This

PDF

<< Results | Next >

D. Renshaw ; P.B. Denyer ; G. Wang ; M. Lu All Authors

31
Paper
Citations23
Patent
Citations291
Full
Text Views

Export to

Collabratec

Alerts

Manage

Content Alerts

Add to

Citation Alerts

More Like This

A custom mixed signal CMOS integrated circuit for high performance PET tomograph front-end applications
2002 IEEE Nuclear Science Symposium Conference Record
Published: 2002

An application specific integrated circuit implementation of a multiple correlator for UWB radio applications
MILCOM 1999, IEEE Military Communications, Conference Proceedings (Cat. No.99CH36341)
Published: 1999

Show More

Abstract

Authors

References

Citations

Keywords

Metrics

More Like This

Downl

PDF

Abstract:Two image array sensors designed and fabricated using a standard two-level metal ASIC CMOS process are described. The results show that good quality grey-level images can... **View more**

Metadata

Abstract:

Two image array sensors designed and fabricated using a standard two-level metal ASIC CMOS process are described. The results show that good quality grey-level images can be formed, and that CMOS sensors arrays can be successfully integrated with efficient analogue sense amplifiers and with digital control/image-processing logic. The first sensor is a prototype 128*128 pixel test array. The second is a 312*287 pixel image sensor chip which includes all the necessary circuitry to produce full PAL format video output, as well as automatic electronic exposure control and built-in test circuits.

Test results characterizing the devices are given, covering dynamic range, spectral

IEEE websites place cookies on your device to enhance site navigation, analyze site usage, and assist in our marketing efforts. (See our Privacy Policy for more information.) By using our websites, you agree to the placement of these cookies. To learn more, read our Privacy Policy.

Accept & Close

Published in: IEEE International Symposium on Circuits and Systems

Date of Conference: 1-3 May 1990

INSPEC Accession Number: 3876442

Date Added to IEEE Xplore: 06 August 2002

DOI: 10.1109/ISCAS.1990.112652

Publisher: IEEE

Conference Location: New Orleans, LA, USA, USA

Authors	▼
References	▼
Citations	▼
Keywords	▼
Metrics	▼

IEEE Personal Account

CHANGE USERNAME/PASSWORD

Purchase Details

PAYMENT OPTIONS
VIEW PURCHASED DOCUMENTS

Profile Information

COMMUNICATIONS PREFERENCES
PROFESSION AND EDUCATION
TECHNICAL INTERESTS

Need Help?

US & CANADA: +1 800 678 4333
WORLDWIDE: +1 732 981 0060
CONTACT & SUPPORT

Follow



About IEEE Xplore | Contact Us | Help | Accessibility | Terms of Use | Nondiscrimination Policy | Sitemap | Privacy & Opting Out of Cookies
A not-for-profit organization, IEEE is the world's largest technical professional organization dedicated to advancing technology for the benefit of humanity.
© Copyright 2020 IEEE - All rights reserved. Use of this web site signifies your agreement to the terms and conditions.

IEEE Account

» Change Username/Password
» Update Address

Purchase Details

» Payment Options
» Order History
» View Purchased Documents

Profile Information

» Communications Preferences
» Profession and Education
» Technical Interests

Need Help?

» US & Canada: +1 800 678 4333
» Worldwide: +1 732 981 0060
» Contact & Support

About IEEE Xplore | Contact Us | Help | Accessibility | Terms of Use | Nondiscrimination Policy | Sitemap | Privacy & Opting Out of Cookies
A not-for-profit organization, IEEE is the world's largest technical professional organization dedicated to advancing technology for the benefit of humanity.
© Copyright 2020 IEEE - All rights reserved. Use of this web site signifies your agreement to the terms and conditions.

IEEE websites place cookies on your device to give you the best user experience. By using our websites, you agree to the placement of these cookies. To learn more, read our Privacy Policy.

Accept & Close

ASIC IMAGE SENSORS

D. Renshaw, P. B. Denyer, G. Wang & M. Lu

Department of Electrical Engineering, University of Edinburgh,
King's Buildings, Mayfield Road, Edinburgh.

§1 : ABSTRACT

This paper describes two image array sensors designed and fabricated using a standard 2 level metal ASIC CMOS process. The results show that (i) good quality, grey-level images can be formed and (ii) CMOS sensor arrays can be successfully integrated with efficient analogue sense amplifiers and with digital control/image processing logic. The first sensor is a proto-type 128×128 pixel test array. The second is a 312×287 pixel image sensor chip, which includes all the necessary circuitry to produce full PAL format video output, as well as automatic, electronic exposure control and built-in test circuits. Test results characterising the devices are also given, covering dynamic range, spectral response, sensitivity, resistance to blooming etc. Finally, some potential applications for such devices are mentioned.

§2 : INTRODUCTION

Solid state image sensors have been designed and demonstrated by various researchers and companies. Available devices e.g., [1,2,3] are capable of delivering good quality grey-level images. They use either CCD or photodiode array technologies, which are non-standard MOS processes. Imaging DRAM devices [4], using MOS memory processes, have also been demonstrated but are unsuitable for many applications, as they give binarized, rather than grey-level data. Other MOS sensors [9] require off chip sense and amplification circuitry. Some researchers have developed special purpose image sensors [5,6,8] using low cost ASIC CMOS processes. These devices, although very interesting architecturally and useful for single, specific functions, do not demonstrate good quality general-purpose grey-level image sensing capability.

A major disadvantage of all commercially available image sensors chips is their requirement for off-chip sense and/or amplification circuitry, for off-chip digital control circuitry, and for multiple supply voltage levels. The experimental work reported here demonstrates that good quality images can be obtained from devices fabricated on a standard, low-cost ASIC CMOS process, that they require very low power, single voltage supply and that the analogue and digital circuitry required to provide the complete sensor function can be integrated on the chip.

In a standard, low-cost ASIC CMOS process there are three possible photodetector device structures available : photoconductor, photo-diode and photo-transistor. Factors affecting the choice of device include device area, response time, and gain. The theory of operation of these devices and design using them are well documented [7]. Photoconductors are unsuited to use in array sensor devices, due to large area and slow response time. Comparing photodiode with phototransistor, the photodiode has advantages of simpler structure, smaller area and faster response time. The phototransistor benefits from greater gain but its use in array devices is complicated by inevitable device and operating condition variation. For these reasons the photodiode is the basic sensing element used in both designs.

§3 : SENSOR 1

- Design :- Our first CMOS sensor chip comprises a 128×128 pixel photodiode array, which includes all the address, sense and amplification circuitry necessary to provide a self-scanned 1 volt peak-to-peak grey-level output signal. The device was designed and built specifically to test the suitability of a standard CMOS ASIC process for image sensing, with the eventual aim of developing low-cost, low-power ASIC image processing and sensing chips.

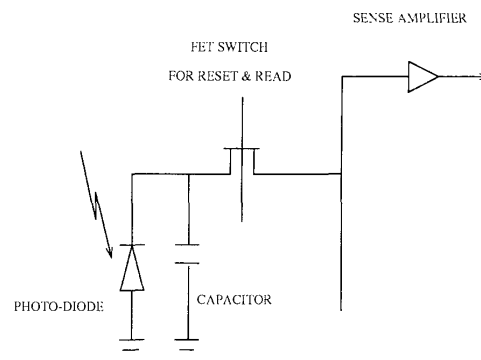


Figure 1 : CMOS sensor pixel & sense amplifier.

CH2868-8/90/0000-3038\$1.00 © 1990 IEEE

The sensor circuit used is shown in *Figure 1*. In operation, the photodiode capacitor is reset to a voltage reference level V_{ref} by opening the FET switch. This stores a fixed charge on the capacitor. The photodiode and capacitor are then isolated. Photocurrent, produced by the effect of photons impinging on the diode, discharges the capacitor. The rate of discharge is proportional to the photocurrent, which is in turn proportional to the incident light level. The final charge retained on the capacitor, after a fixed time interval will represent the light intensity at that point of the image. Thus the photodiode must be accessed through the FET switch after a fixed time interval and the remaining charge sensed; this is the read operation. Key to the success of operation is the performance of the charge sensing function. Pixel design was contained by a $20\mu\text{m}$ pitch in both X and Y dimensions. (This may be tailored in application specific redesign.) The sensor architecture is shown in *Figure 2*.

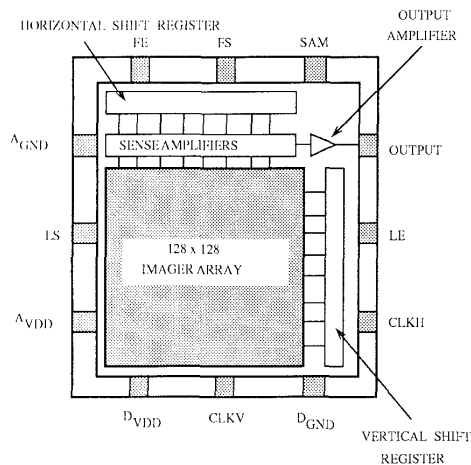


Figure 2 : CMOS sensor array architecture.

The pixels of a line of photodiodes are read and then reset in parallel. The row-read operation uses a row of sensitive charge integrators to perform the essential charge-sensing operation on-chip : a novel feature of this device. These sense amplifiers must be small enough to pitch-match the pixels, yet sensitive enough to give a good signal to noise ratio on the sensed signal; they must also be insensitive to at least the first order process parameter variations. The results of the read operation are held capacitively and then read out sequentially through an output amplifier, to give a line scan. Each line is accessed in sequence. (Alternative application specific redesigns could allow parallel read out of the full line, or part of it.) The chip is supplied with clock and initialisation signals and a single 5 volt supply. The read-out rate and exposure (integration) time are variable. The small active area (11 sq. mm.) allows for integration of other processing logic.

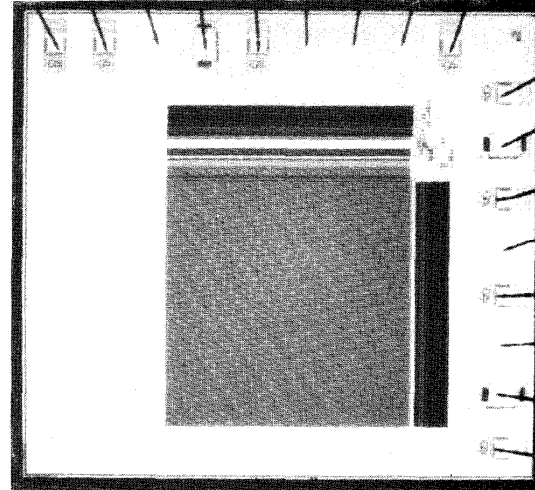


Figure 3 : Prototype CMOS 128×128 sensor array.

- Test and Characterisation Results :- The design was fabricated using ES2 $2\mu\text{m}$ ASIC CMOS process. Samples (*Figure 3*) have been tested and characterised. Initial testing included display of visual images on an oscilloscope screen, for frame rates of 60 f.p.s. To evaluate the quality achievable on a conventional monitor display, (*Figures 4, 5*) a PC with enhanced VGA was used together with an ADC and dedicated RAM frame-store interface. The images obtained displayed unexpectedly good grey-level quality, with excellent uniformity.



Figure 4 : Grey-scale image formed by 128×128 pixel prototype sensor.



Figure 5 : Grey-scale image formed by 128×128 pixel prototype sensor.

In order to characterise the imager, an optical test measurement set-up, was used. *Table 1* (at the end of this paper) summarises the measured results of the performance characterisation experiments. There was no observable cross-talk, ghosting or smear. Anti-blooming performance is comparable with commercially available CCD and photodiode devices. Over-exposure on one frame has no measurable persistence effect on subsequent frames. The sensitivity and spectral response (*Figure 6*) are particularly well suited to the visible spectrum and exhibit only low ripple (probably due to effects in the passivation layer). Performance is well maintained over a range of operating supply voltages (3.5V - 12V) and temperatures. Notably the entire sensor system may be operated successfully from a single 5V supply.

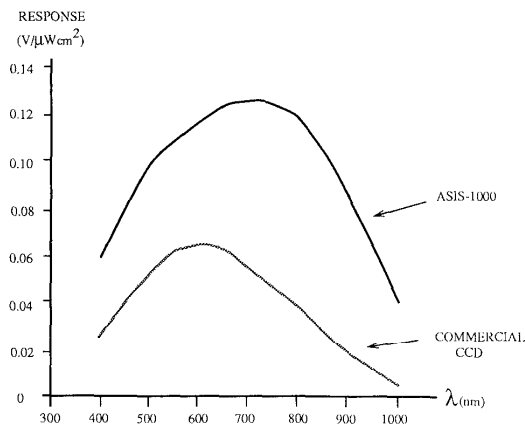


Figure 6 : Comparison of spectral response of 128×128 pixel prototype sensor with that of a commercial CCD device.

§4 : SENSOR 2

- **Design :-** The second sensor (*Figure 7*) has been designed to demonstrate the potential of ASIC CMOS for building fully integrated image sensor-processors. It comprises a 312×287 pixel photodiode array, similar to that in Sensor 1. In addition to the basic sense and control circuits used in sensor 1 there are circuits which provide the following functions:

1. 256×256 selected scan image output
2. full interlaced video format (CCITT) output
3. electronically adjustable exposure (via control of integration time)
4. automatic electronic control of exposure setting

These additional functions are provided through a 4,000 gate processor, adjacent to the sensor array. This device is, therefore, a single chip video camera : provided with a 5 volt power supply and focused light images it provides a black and white CCITT format video output. To our knowledge, all previously developed video imagers require one or more boards of surface mount components to achieve this. This design has been completed and is at present in fabrication. Details of the design and test results can be summarised at the Symposium.

§5 : CONCLUSIONS

The design and performance of ASIC CMOS VLSI image sensors has been reported here. Extension of the design to produce integrated ASIC sensor-processors has also been described. Their features of low cost processing technology, single low-voltage supply requirement, low power dissipation and potential for integration of digital logic demonstrate the viability of CMOS for single chip combined image sensing and processing devices. In the near future, as a development of this, we may expect to see an increasing number of products based on such technology. Applications would include security and surveillance cameras, remote sensing devices and special purpose image sensor-processors, where tailoring of the architecture of the sensor or its interface gives real advantages.

- ACKNOWLEDGEMENTS -

We would like to thank D.Suen and C.H. Lau for technical contributions. We acknowledge the co-operation of the South-Eastern University of China, Nanjing, for seconding G. Wang & M. Lu as Visiting Academics. We acknowledge support received from the University of Edinburgh Quantum Fund and from the Science & Engineering Research Council (Grant GR/F 36538 IED2/1/1159).

References

1. *Frame transfer sensor*, Mullard development data, 1985.
2. *Image Sensing Products*, EG&G Reticon, 1988.
3. *Semiconductor Products List*, Sony, 1988.
4. Ciarcia, in *BYTE*, pp. 21-31, Sept, 1983.
5. Lyon, in *CMU VLSI Conference*, pp. 1-19, 1981.
6. Mead, *Analog VLSI & neural systems*, Addison-Wesley, 1989.
7. Sze, *Physics of semiconductor devices*, pp. 743-789, Wiley, 1981.
8. Hatfield, et. al., in *ESSCIRC'88*, pp. 339-342, 1988.
9. Kinugasa, et. al., *I.E.E.E Trans. Consumer Electronics*, vol. CE-33, pp. 249-255, Aug, 1987.

TABLE 1

Parameter	Minimum	Nominal	Maximum	Units
Integration time	17.5		300	ms
Refresh rate	3.3		57	frames/sec
O/P voltage swing (peak to peak)		1.0		Volts
Operating voltage	3.5	5.0	12.0	Volts
Power dissipation		3.0		mW
SNR (measured)		51		dB
Blooming protection†		500×		
Dark current ‡		0.01		‡
Operating Temperature range	<-20	25	+ 80	°C

† Over-exposure which causes a small bright spot to form a detectable streak.

‡ Dark current, measured at 25°C, expressed as % of saturation exposure over an integration time of 20 msec.

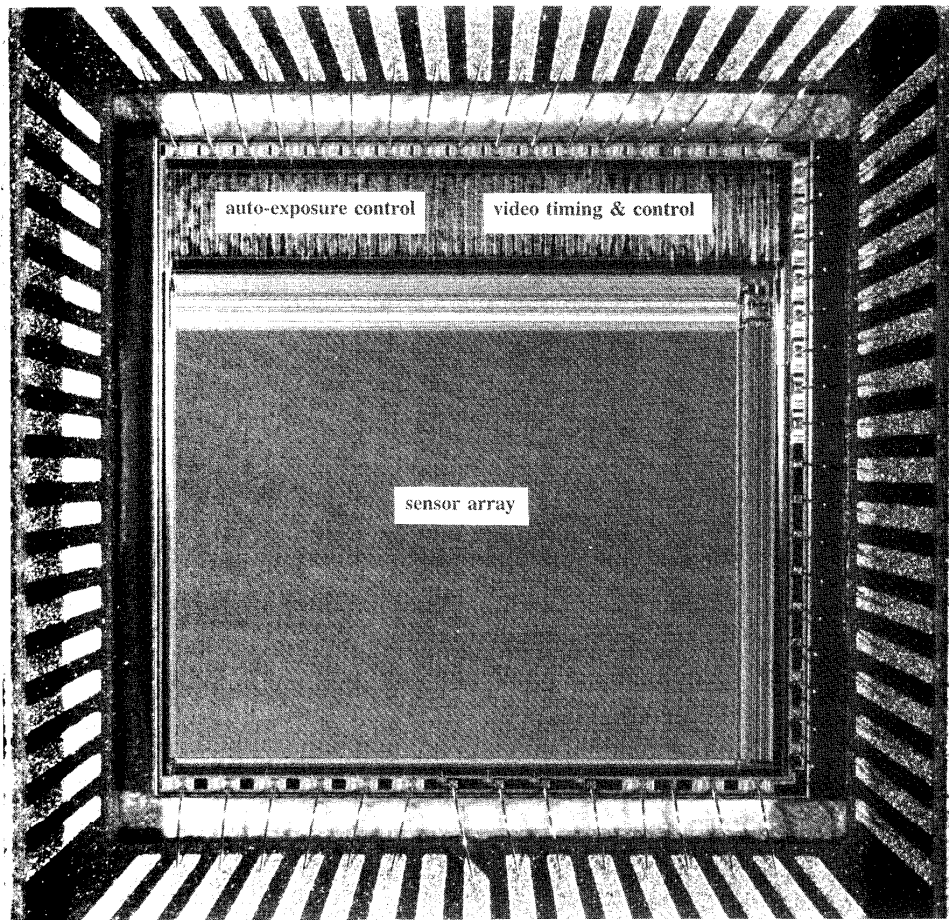


Figure 7 : Integrated ASIC camera chip