



US008279313B2

(12) **United States Patent**
Rhodes

(10) **Patent No.:** **US 8,279,313 B2**
(45) **Date of Patent:** ***Oct. 2, 2012**

(54) **ACTIVE PIXEL SENSOR WITH A DIAGONAL ACTIVE AREA**

(75) Inventor: **Howard E. Rhodes**, Boise, ID (US)

(73) Assignee: **Round Rock Research, LLC**, Mt. Kisco, NY (US)

(*) Notice: Subject to any disclaimer, the term of this patent is extended or adjusted under 35 U.S.C. 154(b) by 233 days.

This patent is subject to a terminal disclaimer.

(21) Appl. No.: **12/712,872**

(22) Filed: **Feb. 25, 2010**

(65) **Prior Publication Data**

US 2010/0149395 A1 Jun. 17, 2010

Related U.S. Application Data

(63) Continuation of application No. 10/661,494, filed on Sep. 15, 2003, now Pat. No. 7,692,705, which is a continuation of application No. 09/335,182, filed on Jun. 17, 1999, now Pat. No. 6,654,057.

(51) **Int. Cl.**
H04N 5/335 (2011.01)

(52) **U.S. Cl.** **348/308; 348/294; 348/302; 250/208.1; 257/291; 257/292**

(58) **Field of Classification Search** **348/308**
See application file for complete search history.

(56) **References Cited**

U.S. PATENT DOCUMENTS

4,081,841 A 3/1978 Ochi et al.
4,262,297 A 4/1981 Partridge
4,309,624 A 1/1982 Hyneczek et al.

4,319,261 A 3/1982 Kub
4,374,700 A 2/1983 Scott et al.
4,700,459 A 10/1987 Peek
5,151,385 A 9/1992 Yamamoto et al.
5,194,724 A 3/1993 Sekine
5,319,604 A 6/1994 Imondi et al.
5,393,997 A 2/1995 Fukusho et al.
5,449,908 A 9/1995 Wadsworth et al.
5,461,425 A 10/1995 Fowler et al.
5,471,515 A 11/1995 Fossum et al.
5,506,429 A 4/1996 Tanaka et al.
5,541,402 A 7/1996 Ackland et al.
5,576,763 A 11/1996 Ackland et al.
5,587,738 A 12/1996 Shinohara
5,608,243 A 3/1997 Chi et al.
5,612,799 A 3/1997 Yamazaki et al.
5,614,744 A 3/1997 Merrill

(Continued)

OTHER PUBLICATIONS

Dickinson, A., et al., "A 256×256 CMOS Active Pixel Image Sensor with Motion Detection," 1995 IEEE International Solid-State Circuits Conference, pp. 226-227.

(Continued)

Primary Examiner — Sinh Tran

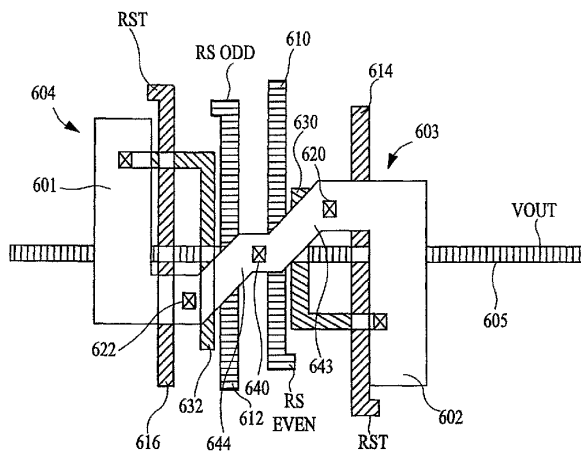
Assistant Examiner — Paul Berardesca

(74) *Attorney, Agent, or Firm* — Lerner, David, Littenberg, Krumholz & Mentlik, LLP

(57) **ABSTRACT**

An imaging device formed as a CMOS semiconductor integrated circuit having two adjacent pixels in a row connected to a common column line. By having adjacent pixels of a row share column lines, the CMOS imager circuit eliminates half the column lines of a traditional imager allowing the fabrication of a smaller imager. The imaging device also may be fabricated to have a diagonal active area to facilitate contact of two adjacent pixels with the single column line and allow linear row select lines, reset lines and column lines.

15 Claims, 8 Drawing Sheets



U.S. PATENT DOCUMENTS

5,625,210 A 4/1997 Lee et al.
 5,705,846 A 1/1998 Merrill
 5,708,263 A 1/1998 Wong
 5,721,422 A 2/1998 Bird
 5,747,840 A 5/1998 Merrill
 5,757,045 A 5/1998 Tsai et al.
 5,760,458 A 6/1998 Bergemont et al.
 5,955,753 A 9/1999 Takahashi
 6,040,569 A 3/2000 Hyncek
 6,118,115 A 9/2000 Kozuka et al.
 6,130,423 A 10/2000 Brehmer et al.
 6,140,630 A 10/2000 Rhodes
 6,141,049 A 10/2000 Harada
 6,141,050 A 10/2000 Ackland et al.
 6,300,977 B1 10/2001 Waechter et al.
 6,654,057 B1 11/2003 Rhodes
 6,977,684 B1 12/2005 Hashimoto et al.
 2004/0080648 A1 4/2004 Rhodes

OTHER PUBLICATIONS

- Dickinson, A., et al., "Standard CMOS Active Pixel Image Sensors for Multimedia Applications," Proceedings of Sixteenth Conference on Advanced Research in VLSI, Mar. 27-29, 1995, pp. 214-224.
- Eid, E-S., et al., "A 256x256 CMOS Active Pixel Image Sensor," Proc. SPIE vol. 2415, Apr. 1995, pp. 265-275.
- Fossum, E., "CMOS Image Sensors: Electronic Camera on a Chip," 1995 IEEE, pp. 17-25.
- Fossum, E., et al., "IEDM A 37x28mm²600k-Pixel CMOS APS Dental X-Ray Camera-on-a-Chip with Self-Triggered Readout," 1998 IEEE International Solid-State Circuits Conference, pp. 172-173.
- Nixon, R.H., et al., "256x256 CMOS Active Pixel Sensor Camera-on-a-Chip," IEEE Journal of Solid-State Circuits, vol. 31, No. 12, Dec. 1996, pp. 2046-2050.
- Nixon, R.H., et al., "256x256 CMOS Active Pixel Sensor Camera-on-a-Chip," 1996 IEEE International Solid-State Circuits Conference, pp. 178-179.
- Panicacci, R., et al., "Programmable multiresolution CMOS active pixel sensor," Proc. SPIE vol. 2654, Mar. 1996, pp. 72-79.
- Panicacci, R.A., et al., "128Mb/s Multiport CMOS Binary Active-Pixel Image Sensor," 1996 IEEE International Solid-State Circuit Conference, pp. 100-101.
- Yadid-Pecht, O., et al., "CMOS Active Pixel Sensor Star Tracker with Regional Electronic Shutter," IEEE Journal of Solid-State Circuits, vol. 32, No. 2, Feb. 1997, pp. 285-288.
- Yadid-Pecht, O., et al., "Wide dynamic range APS star tracker," Proc. SPIE vol. 2654, Mar. 1996, pp. 82-92.
- Zarnowski, J., et al., "Imaging options expand with CMOS technology," Laser Focus World, Jun. 1997, pp. 125-130.
- Zhou, Z., et al., "A Cmos Imager with On-Chip Variable Resolution for Light-Adaptive Imaging," 1998 IEEE International Solid-State Circuits Conference, pp. 174-175.
- Zhou, Z., et al., "A Digital CMOS Active Pixel Image Sensor for Multimedia Applications," Proc. SPIE vol. 2894, Sep. 1996, pp. 282-288.
- Fossum, E., "Low Power Camera-on-a-Chip Using CMOS Active Pixel Sensor Technology," 1995 IEEE, pp. 74-77.
- Fossum, E., "Architectures for Focal Plane Image Processing," Optical Engineering, vol. 28, No. 8, Aug. 1989, pp. 865-871.
- Janesick, J., "New Advancements in Charge-Coupled Device Technology—Sub-Electron Noise and 4096x4096 Pixel CCDs," Proc. SPIE vol. 1242, 1990, pp. 223-237.
- Kemeny, S.E., et al., "Update on Focal-Plane Image Processing Research," Proc. SPIE vol. 1447, 1991, pp. 243-250.
- Mendis, S., et al., "CMOS Active Pixel Image Sensor," IEEE Transactions on Electron Devices, vol. 41, No. 3, Mar. 1994, pp. 452-453.
- Mendis, S.K., et al., "A 128x128 CMOS Active Pixel Image Sensor for highly Integrated Imaging Systems," 1993 IEEE, pp. 583-586.
- Mendis, S.K., et al., "CMOS Active Pixel Image Sensors for Highly Integrated Imaging Systems," IEEE Journal of Solid-State Circuits, vol. 32, No. 2, Feb. 1997, pp. 187-197.
- Mendis, S.K., et al., "Design of a Low-Light-Level Image Sensor with On-Chip Sigma-Delta Analog-to-Digital Conversion," Proc. SPIE vol. 1900, Jul. 1993, pp. 31-39.
- Mendis, S.K., et al., "Low-Light-Level Image Sensor with On-Chip Signal Processing," Proc. SPIE vol. 1952, Nov. 1993, pp. 23-33.
- Mendis, S.K., et al., "Progress in CMOS Active Pixel Image Sensors," Proc. SPIE vol. 2172, May 1994, pp. 19-29.
- Nakamura, J., et al., "CMOS Active Pixel Image Sensor with Simple Floating Gate Pixels," IEEE Transactions on Electron Devices, vol. 42, No. 9, Sep. 1995, pp. 1693-1694.

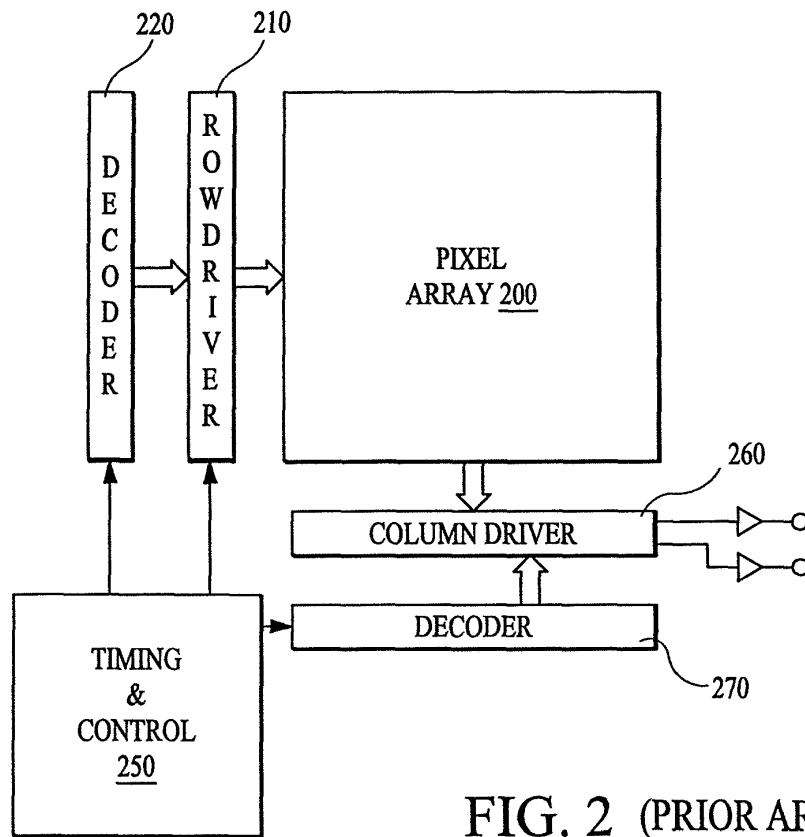


FIG. 2 (PRIOR ART)

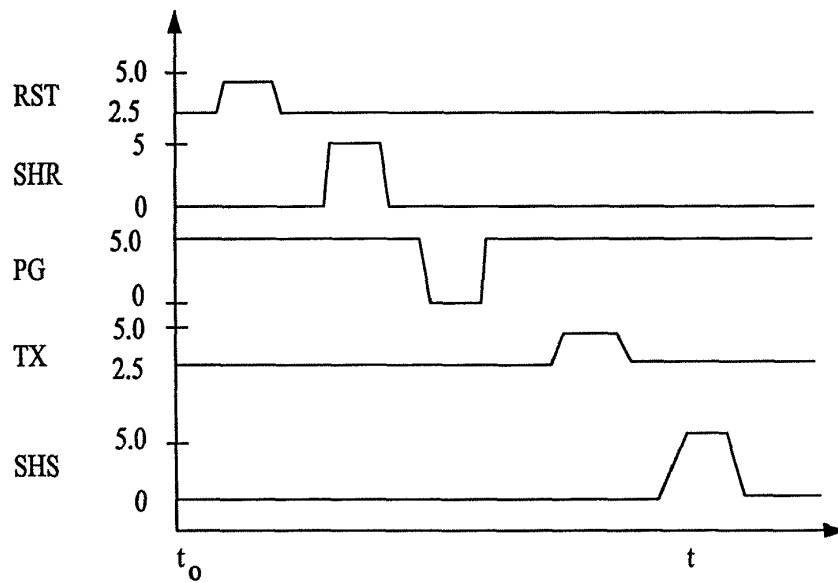


FIG. 3 (PRIOR ART)

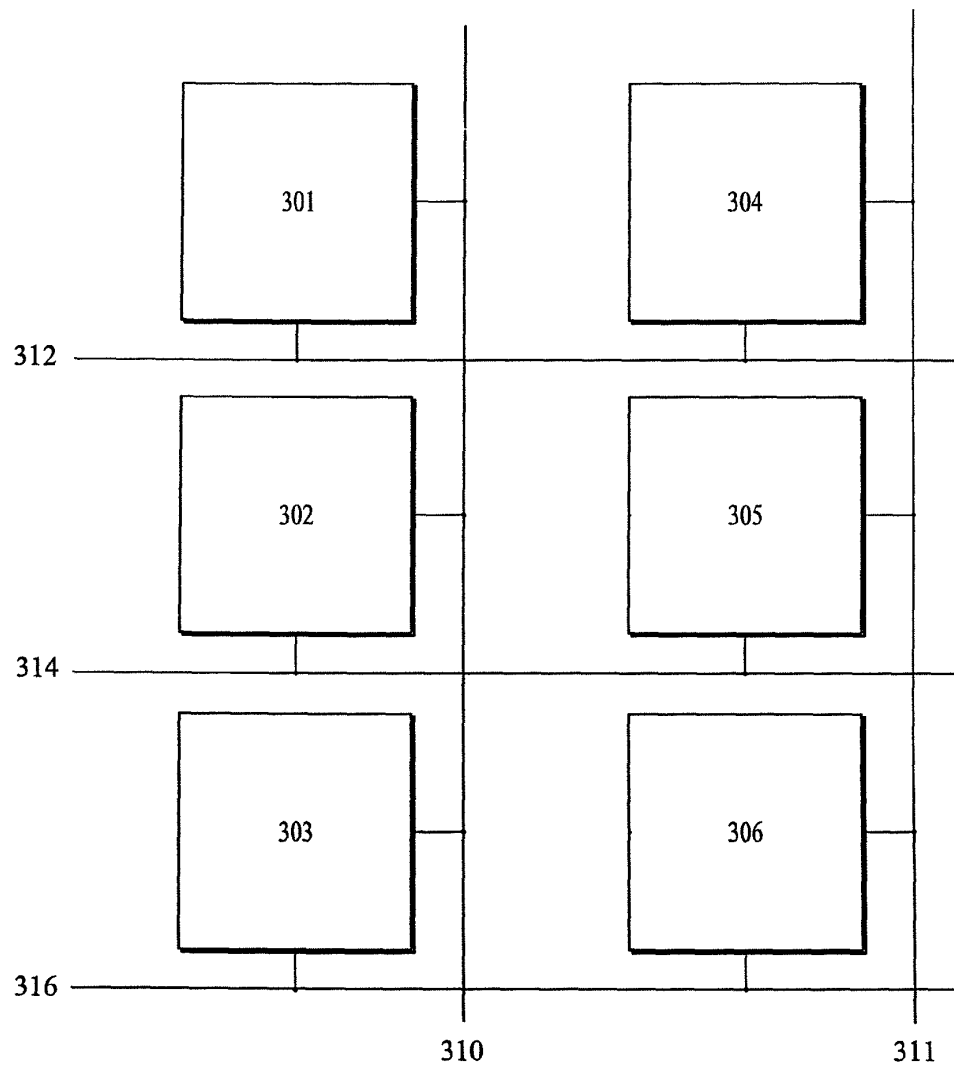


FIG. 4
(PRIOR ART)

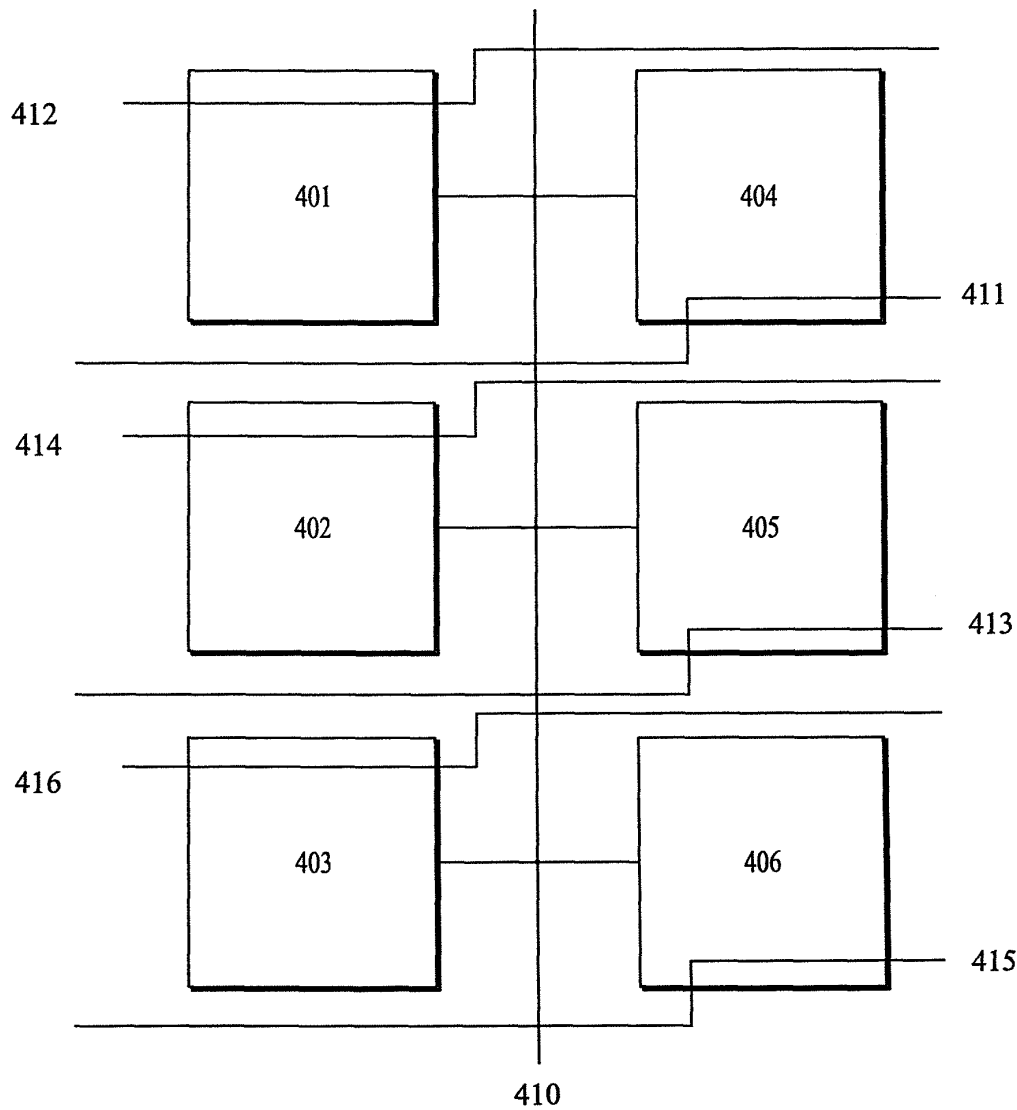


FIG. 5

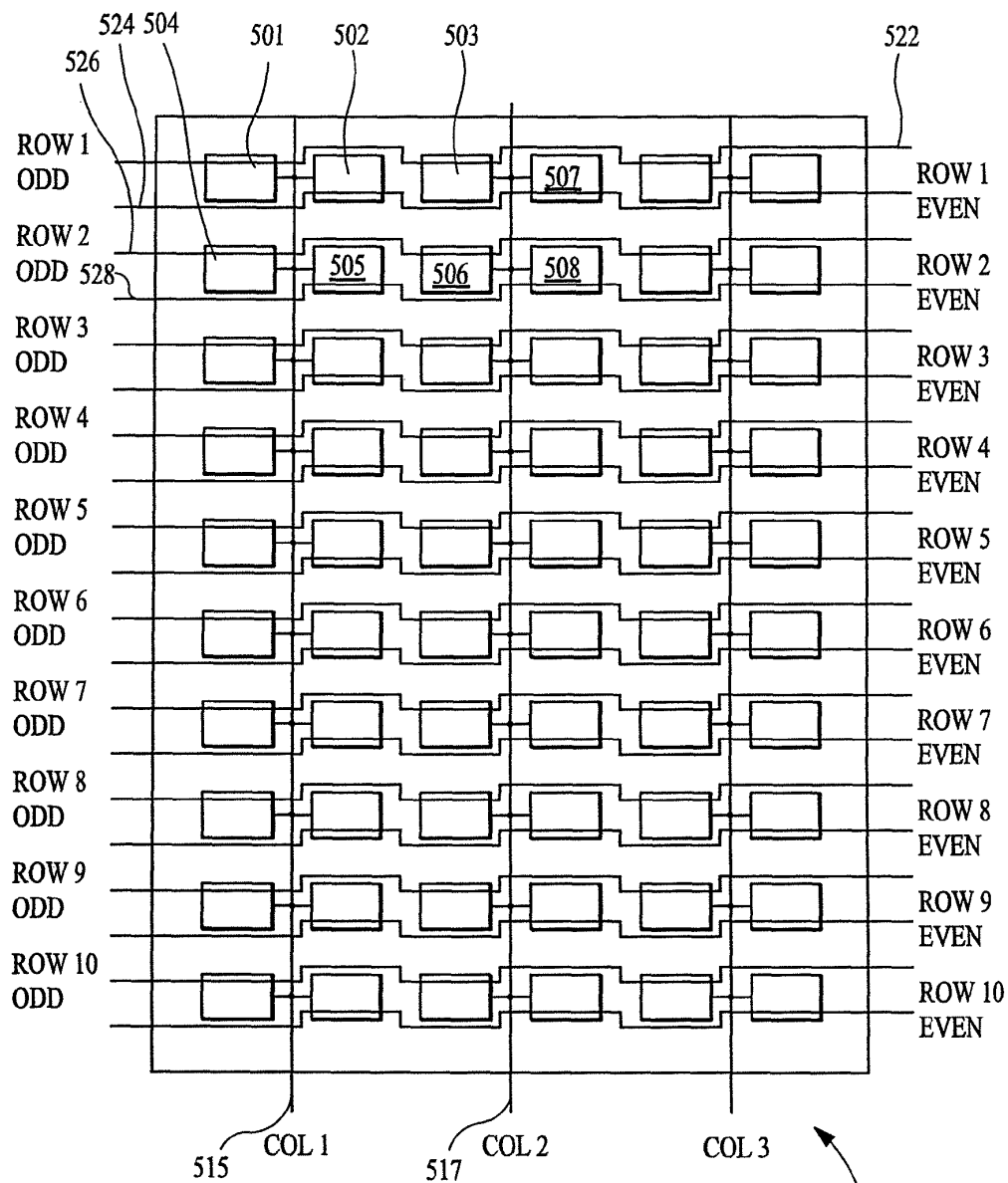


FIG. 6

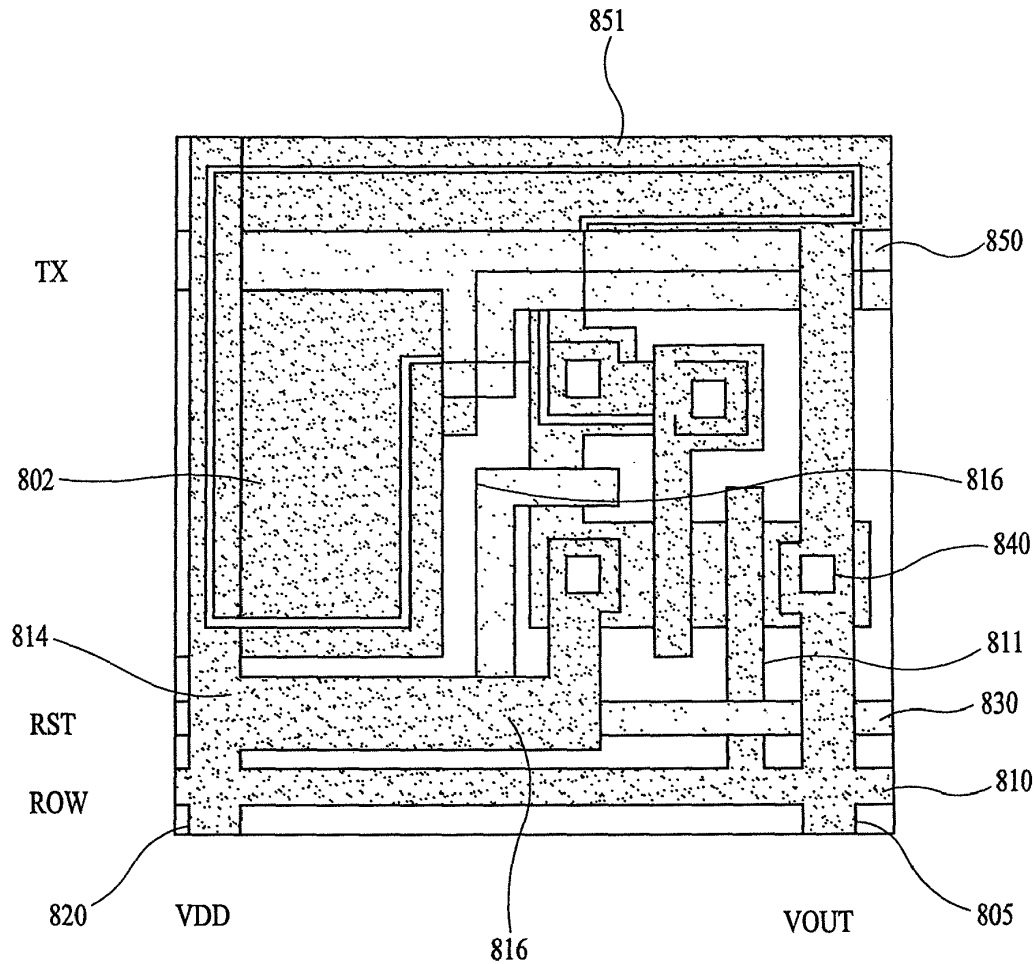


FIG. 7
(PRIOR ART)

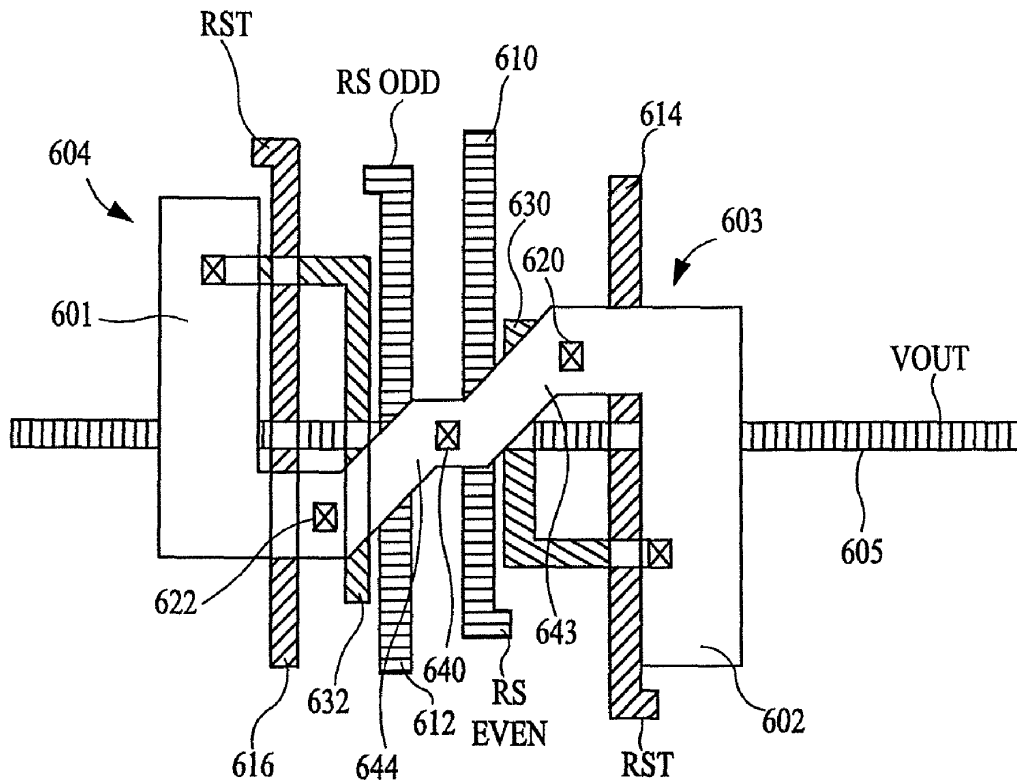


FIG. 8

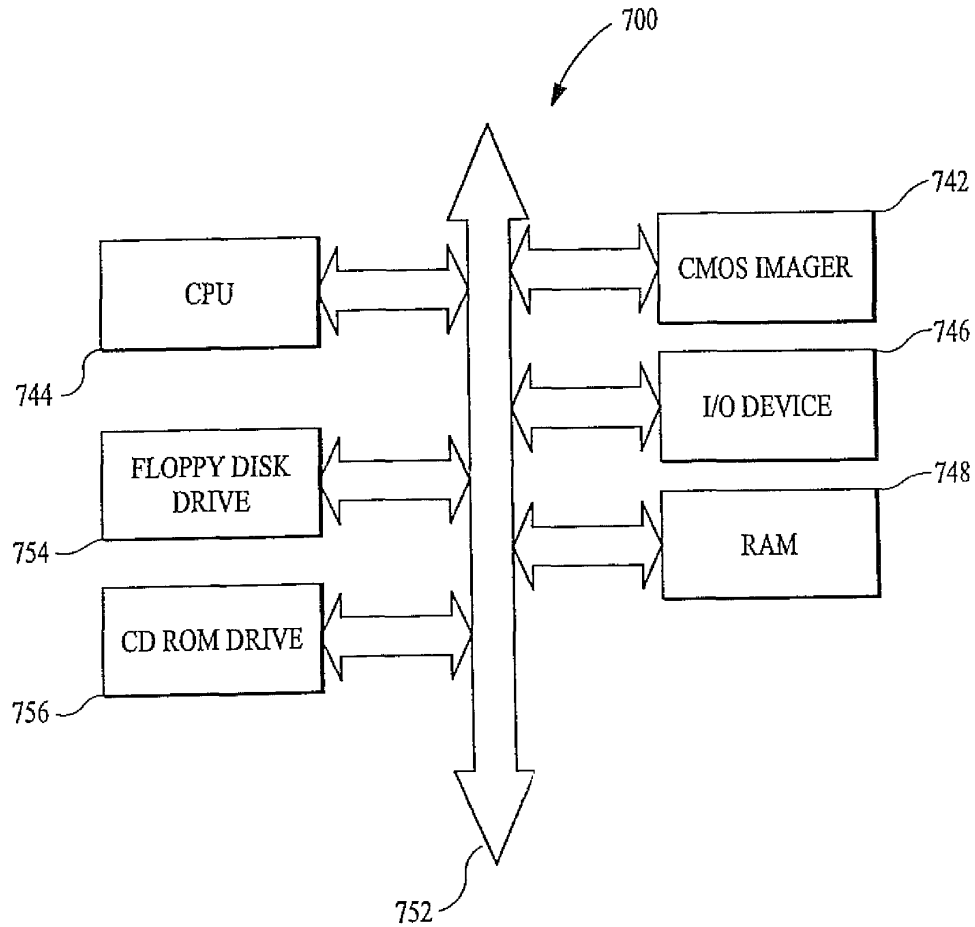


FIG. 9
(PRIOR ART)

1

ACTIVE PIXEL SENSOR WITH A DIAGONAL ACTIVE AREA

This application is a continuation of U.S. application Ser. No. 10/661,494, filed Sep. 15, 2003, now U.S. Pat. No. 7,692, 705, which is a continuation of U.S. application Ser. No. 09/335,182, filed Jun. 17, 1999, now U.S. Pat. No. 6,654,057, the disclosures of which are incorporated in their entirety by reference herein.

FIELD OF THE INVENTION

The invention relates generally to improved semiconductor imaging devices and in particular to a silicon imaging device which can be fabricated using a standard CMOS process. Particularly, the invention relates to CMOS imager having orthogonal row and column lines and a plurality of pixel sensors each having a diagonal active area. The invention further relates to a CMOS imager having two adjacent pixels in the same row of a pixel array connected to a shared column line.

DESCRIPTION OF THE RELATED ART

There are a number of different types of semiconductor-based imagers, including charge coupled devices (CCDs), photodiode arrays, charge injection devices and hybrid focal plane arrays. CCDs are often employed for image acquisition and enjoy a number of advantages which makes it the incumbent technology, particularly for small size imaging applications. CCDs are also capable of large formats with small pixel size and they employ low noise charge domain processing techniques. However, CCD imagers also suffer from a number of disadvantages. For example, they are susceptible to radiation damage, they exhibit destructive read out over time, they require good light shielding to avoid image smear and they have a high power dissipation for large arrays. Additionally, while offering high performance, CCD arrays are difficult to integrate with CMOS processing in part due to a different processing technology and to their high capacitances, complicating the integration of on-chip drive and signal processing electronics with the CCD array. While there has been some attempts to integrate on-chip signal processing with the CCD array, these attempts have not been entirely successful. CCDs also must transfer an image by line charge transfers from pixel to pixel, requiring that the entire array be read out into a memory before individual pixels or groups of pixels can be accessed and processed. This takes time. CCDs may also suffer from incomplete charge transfer from pixel to pixel during charge transfer which also results in image smear.

Because of the inherent limitations in CCD technology, there is an interest in CMOS imagers for possible use as low cost imaging devices. A fully compatible CMOS sensor technology enabling a higher level of integration of an image array with associated processing circuits would be beneficial to many digital applications such as, for example, in cameras, scanners, machine vision systems, vehicle navigation systems, video telephones, computer input devices, surveillance systems, auto focus systems, star trackers, motion detection systems, image stabilization systems and data compression systems for high-definition television.

The advantages of CMOS imagers over CCD imagers are that CMOS imagers have a low voltage operation and low power consumption; CMOS imagers are compatible with integrated on-chip electronics (control logic and timing, image processing, and signal conditioning such as A/D con-

2

version); CMOS imagers allow random access to the image data; and CMOS imagers have lower fabrication costs as compared with the conventional CCD since standard CMOS processing techniques can be used. Additionally, low power consumption is achieved for CMOS imagers because only one row of pixels at a time needs to be active during the readout and there is no charge transfer (and associated switching) from pixel to pixel during image acquisition. On-chip integration of electronics is particularly advantageous because of the potential to perform many signal conditioning functions in the digital domain (versus analog signal processing) as well as to achieve a reduction in system size and cost.

A CMOS imager circuit includes a focal plane array of pixel cells, each one of the cells including either a photogate, photoconductor or a photodiode overlying a substrate for accumulating photo-generated charge in the underlying portion of the substrate. A readout circuit is connected to each pixel cell and includes at least an output field effect transistor formed in the substrate and a charge transfer section formed on the substrate adjacent the photogate, photoconductor or photodiode having a sensing node, typically a floating diffusion node, connected to the gate of an output transistor. The imager may include at least one electronic device such as a transistor for transferring charge from the underlying portion of the substrate to the floating diffusion node and one device, also typically a transistor, for resetting the node to a predetermined charge level prior to charge transference.

In a CMOS imager, the active elements of a pixel cell perform the necessary functions of: (1) photon to charge conversion; (2) accumulation of image charge; (3) transfer of charge to the floating diffusion node accompanied by charge amplification; (4) resetting the floating diffusion node to a known state before the transfer of charge to it; (5) selection of a pixel for readout; and (6) output and amplification of a signal representing pixel charge. Photo charge may be amplified when it moves from the initial charge accumulation region to the floating diffusion node. The charge at the floating diffusion node is typically converted to a pixel output voltage by a source follower output transistor. The photosensitive element of a CMOS imager pixel is typically either a depleted p-n junction photodiode or a field induced depletion region beneath a photogate. For photodiodes, image lag can be eliminated by completely depleting the photodiode upon readout.

CMOS imagers of the type discussed above are generally known as discussed, for example, in Nixon et al., "256x256 CMOS Active Pixel Sensor Camera-on-a-Chip," IEEE Journal of Solid-State Circuits, Vol. 31(12) pp. 2046-2050, 1996; Mendis et al., "CMOS Active Pixel Image Sensors," IEEE Transactions on Electron Devices, Vol. 41(3) pp. 452-453, 1994 as well as U.S. Pat. No. 5,708,263 and U.S. Pat. No. 5,471,515, which are herein incorporated by reference.

To provide context for the invention, an exemplary CMOS imaging circuit is described below with reference to FIG. 1. The circuit described below, for example, includes a photogate for accumulating photo-generated charge in an underlying portion of the substrate. It should be understood that the CMOS imager may include a photodiode or other image to charge converting device, in lieu of a photogate, as the initial accumulator for photo-generated charge.

Reference is now made to FIG. 1 which shows a simplified circuit for a pixel of an exemplary CMOS imager using a photogate and having a pixel photodetector circuit 14 and a readout circuit 60. It should be understood that while FIG. 1 shows the circuitry for operation of a single pixel, that in practical use there will be an MxN array of pixels arranged in

3

rows and columns with the pixels of the array accessed using row and column select circuitry, as described in more detail below.

The photodetector circuit **14** is shown in part as a cross-sectional view of a semiconductor substrate **16** typically a p-type silicon, having a surface well of p-type material **20**. An optional layer **18** of p-type material may be used if desired, but is not required. Substrate **16** may be formed of, for example, Si, SiGe, Ge, and GaAs. Typically the entire substrate **16** is p-type doped silicon substrate and may contain a surface p-well **20** (with layer **18** omitted), but many other options are possible, such as, for example p on p- substrates, p on p+ substrates, p-wells in n-type substrates or the like. The terms wafer or substrate used in the description includes any semiconductor-based structure having an exposed surface in which to form the circuit structure used in the invention. Wafer and substrate are to be understood as including, silicon-on-insulator (SOI) technology, silicon-on-sapphire (SOS) technology, doped and undoped semiconductors, epitaxial layers of silicon supported by a base semiconductor foundation, and other semiconductor structures. Furthermore, when reference is made to a wafer or substrate in the following description, previous process steps may have been utilized to form regions/junctions in the base semiconductor structure or foundation.

An insulating layer **22** such as, for example, silicon dioxide is formed on the upper surface of p-well **20**. The p-type layer may be a p-well formed in substrate **16**. A photogate **24** thin enough to pass radiant energy or of a material which passes radiant energy is formed on the insulating layer **22**. The photogate **24** receives an applied control signal PG which causes the initial accumulation of pixel charges in n+ region **26**. The n+ type region **26**, adjacent one side of photogate **24**, is formed in the upper surface of p-well **20**. A transfer gate **28** is formed on insulating layer **22** between n+ type region **26** and a second n+ type region **30** formed in p-well **20**. The n+ regions **26** and **30** and transfer gate **28** form a charge transfer transistor **29** which is controlled by a transfer signal TX. The n+ region **30** is typically called a floating diffusion region. It is also a node for passing charge accumulated thereat to the gate of a source follower transistor **36** described below. A reset gate **32** is also formed on insulating layer **22** adjacent and between n+ type region **30** and another n+ region **34** which is also formed in p-well **20**. The reset gate **32** and n+ regions **30** and **34** form a reset transistor **31** which is controlled by a reset signal RST. The n+ type region **34** is coupled to voltage source VDD, e.g., 5 volts. The transfer and reset transistors **29**, **31** are n-channel transistors as described in this implementation of a CMOS imager circuit in a p-well. It should be understood that it is possible to implement a CMOS imager in an n-well in which case each of the transistors would be p-channel transistors. It should also be noted that while FIG. 1 shows the use of a transfer gate **28** and associated transistor **29**, this structure provides advantages, but is not required.

Photodetector circuit **14** also includes two additional n-channel transistors, source follower transistor **36** and row select transistor **38**. Transistors **36**, **38** are coupled in series, source to drain, with the source of transistor **36** also coupled over lead **40** to voltage source VDD and the drain of transistor **38** coupled to a lead **42**. The drain of row select transistor **38** is connected via conductor **42** to the drains of similar row select transistors for other pixels in a given pixel row. A load transistor **39** is also coupled between the drain of transistor **38** and a voltage source VSS, e.g., 0 volts. Transistor **39** is kept on by a signal VLN applied to its gate.

4

The imager includes a readout circuit **60** which includes a signal sample and hold (S/H) circuit including a S/H n-channel field effect transistor **62** and a signal storage capacitor **64** connected to the source follower transistor **36** through row transistor **38**. The other side of the capacitor **64** is connected to a source voltage VSS. The upper side of the capacitor **64** is also connected to the gate of a p-channel output transistor **66**. The drain of the output transistor **66** is connected through a column select transistor **68** to a signal sample output node VOUTS and through a load transistor **70** to the voltage supply VDD. A signal called "signal sample and hold" (SHS) briefly turns on the S/H transistor **62** after the charge accumulated beneath the photogate electrode **24** has been transferred to the floating diffusion node **30** and from there to the source follower transistor **36** and through row select transistor **38** to line **42**, so that the capacitor **64** stores a voltage representing the amount of charge previously accumulated beneath the photogate electrode **24**.

The readout circuit **60** also includes a reset sample and hold (S/H) circuit including a S/H transistor **72** and a signal storage capacitor **74** connected through the S/H transistor **72** and through the row select transistor **38** to the source of the source follower transistor **36**. The other side of the capacitor **74** is connected to the source voltage VSS. The upper side of the capacitor **74** is also connected to the gate of a p-channel output transistor **76**. The drain of the output transistor **76** is connected through a p-channel column select transistor **78** to a reset sample output node VOUTR and through a load transistor **80** to the supply voltage VDD. A signal called "reset sample and hold" (SHR) briefly turns on the S/H transistor **72** immediately after the reset signal RST has caused reset transistor **31** to turn on and reset the potential of the floating diffusion node **30**, so that the capacitor **74** stores the voltage to which the floating diffusion node **30** has been reset.

The readout circuit **60** provides correlated sampling of the potential of the floating diffusion node **30**, first of the reset charge applied to node **30** by reset transistor **31** and then of the stored charge from the photogate **24**. The two samplings of the diffusion node **30** charges produce respective output voltages VOUTR and VOUTS of the readout circuit **60**. These voltages are then subtracted (VOUTS-VOUTR) by subtractor **82** to provide an output signal terminal **81** which is an image signal independent of pixel to pixel variations caused by fabrication variations in the reset voltage transistor **31** which might cause pixel to pixel variations in the output signal.

FIG. 2 illustrates a block diagram for a CMOS imager having a pixel array **200** with each pixel cell being constructed in the manner shown by element **14** of FIG. 1. Pixel array **200** comprises a plurality of pixels arranged in a predetermined number of columns and rows. The pixels of each row in array **200** are all turned on at the same time by a row select line, e.g., line **86**, and the pixels of each column are selectively output by a column select line, e.g., line **42**. A plurality of rows and column lines are provided for the entire array **200**. The row lines are selectively activated by the row driver **210** in response to row address decoder **220** and the column select lines are selectively activated by the column driver **260** in response to column address decoder **270**. Thus, a row and column address is provided for each pixel. The CMOS imager is operated by the control circuit **250** which controls address decoders **220**, **270** for selecting the appropriate row and column lines for pixel readout, and row and column driver circuitry **210**, **260** which apply driving voltage to the drive transistors of the selected row and column lines.

FIG. 3 shows a simplified timing diagram for the signals used to transfer charge out of photodetector circuit **14** of the

5

FIG. 1 CMOS imager. The photogate signal PG is nominally set to 5V and pulsed from 5V to 0V during integration. The reset signal RST is nominally set at 2.5V. As can be seen from the figure, the process is begun at time t_0 by briefly pulsing reset voltage RST to 5V. The RST voltage, which is applied to the gate 32 of reset transistor 31, causes transistor 31 to turn on and the floating diffusion node 30 to charge to the VDD voltage present at n+ region 34 (less the voltage drop V_{th} of transistor 31). This resets the floating diffusion node 30 to a predetermined voltage ($V_{DD}-V_{th}$). The charge on floating diffusion node 30 is applied to the gate of the source follower transistor 36 to control the current passing through transistor 38, which has been turned on by a row select (ROW) signal, and load transistor 39. This current is translated into a voltage on line 42 which is next sampled by providing a SHR signal to the S/H transistor 72 which charges capacitor 74 with the source follower transistor output voltage on line 42 representing the reset charge present at floating diffusion node 30. The PG signal is next pulsed to 0 volts, causing charge to be collected in n+ region 26. A transfer gate voltage TX, similar to the reset pulse RST, is then applied to transfer gate 28 of transistor 29 to cause the charge in n+ region 26 to transfer to floating diffusion node 30. It should be understood that for the case of a photogate, the transfer gate voltage TX may be pulsed or held to a fixed DC potential. For the implementation of a photodiode with a transfer gate, the transfer gate voltage TX must be pulsed. The new output voltage on line 42 generated by source follower transistor 36 current is then sampled onto capacitor 64 by enabling the sample and hold switch 62 by signal SHS. The column select signal is next applied to transistors 68 and 70 and the respective charges stored in capacitors 64 and 74 are subtracted in subtractor 82 to provide a pixel output signal at terminal 81. It should also be noted that CMOS imagers may dispense with the transfer gate 28 and associated transistor 29, or retain these structures while biasing the transfer transistor 29 to an always "on" state.

The operation of the charge collection of the CMOS imager is known in the art and is described in several publications such as Mendis et al., "Progress in CMOS Active Pixel Image Sensors," SPIE Vol. 2172, pp. 19-29 1994; Mendis et al., "CMOS Active Pixel Image Sensors for Highly Integrated Imaging Systems," IEEE Journal of Solid State Circuits, Vol. 32(2), 1997; and Eric R. Fossum, "CMOS Image Sensors: Electronic Camera on a Chip," IEDM Vol. 95 pages 17-25 (1995) as well as other publications. These references are incorporated herein by reference.

Prior CMOS imagers had a respective column line attached to every pixel in the row. By having a column line for each pixel in the row, the row select (ROW), reset (RST) and transfer (TX) lines of the prior imagers had to be routed in a manner where such lines are not straight and, in fact, each have substantial perpendicular conductive segments 811, 816, 851 respectively, as shown in FIG. 7. The large number of perpendicular conductor segments makes fabrication of a pixel array complicated and it is difficult to maintain the required spacing for the numerous conductors and their perpendicular segments. Additionally, CMOS imagers having such a considerable number of non-linear contact paths results in increased materials costs and a large pixel size. It would be desirable to shrink pixel size if possible to reduce the size of the conductors in order to increase the size of the photosensitive area "active area" of a pixel.

SUMMARY OF THE INVENTION

The present invention provides an imaging device formed as a CMOS integrated circuit using a standard CMOS process

6

fabricated such that two adjacent pixels in a selected row share a single column line. By sharing column lines, the pixel array can be fabricated using fewer conductors which permits the cells to have larger photosensitive areas. Additionally, by having two adjacent pixels sharing a single column line the imager will be more efficiently fabricated since the design of the present invention eliminates half of the usually required metal column line contacts.

The present invention seeks to reduce the number of required conductors having perpendicular segments while providing orthogonal row and column conductors for the pixel array. In one implementation of the invention the shared column lines and straight contact lines are achieved by formulating a diagonal active area for each pixel. The fabrication of the diagonal active area allows the row select lines and column select and reset lines to be linear in the circuit (when viewed from above). The diagonal active area implementation of the present invention also allows displacement of the metal Vout lines from the VDD contacts so that the Vout lines can be straight.

The above and other advantages and features of the invention will be more clearly understood from the following detailed description which is provided in connection with the accompanying drawings.

BRIEF DESCRIPTION OF THE DRAWINGS

The foregoing and other advantages and features of the invention will become more apparent from the detailed description of the preferred embodiments of the invention given below with reference to the accompanying drawings in which:

FIG. 1 is a representative circuit of a CMOS imager.

FIG. 2 is a block diagram of a CMOS active pixel sensor chip.

FIG. 3 is a representative timing diagram for the CMOS imager.

FIG. 4 shows a pixel layout showing a 2x3 pixel layout according to the prior art.

FIG. 5 shows a pixel layout showing a 2x3 pixel layout according to one embodiment of the present invention.

FIG. 6 is a representative layout of a CMOS array according to the present invention showing two rows of pixels sharing a single column line.

FIG. 7 is a layout illustrating a prior CMOS imager.

FIG. 8 is a layout illustrating a CMOS imager of the present invention having a diagonal active area.

FIG. 9 is an illustration of a computer system having a CMOS imager according to the present invention.

DETAILED DESCRIPTION OF PREFERRED EMBODIMENTS

The present invention will now be described with reference to the figures. Referring now to FIG. 4. This figure shows a 2x3 pixel layout according to the prior art. Pixels 301, 302 and 303 contact column line 310 and row lines 312, 314 and 316. Pixels 304, 305 and 306 contact column line 311 and row lines 312, 314 and 316.

FIG. 5 illustrates a similar 2x3 pixel layout according to one embodiment of the present invention. As illustrated in the figure, pixels 401, 402, 403, 404, 405 and 406 all connect with column line 410. Pixel 401 connects with even row line 412. Pixel 402 connects with even row line 414. Pixel 403 connects with even row line 416. Pixel 404 connects with odd row line 411. Pixel 405 connects with odd row line 413. Pixel 406 connects with odd row line 415. As can be seen from FIG. 5,

all six pixels connects with a single column line **410**. Row lines (**411**, **412**, **413**, **414**, **415**, **416**) are conventionally formed of doped polysilicon, metals; such as tungsten, titanium, titanium nitride; and refractory metal silicides; such as tungsten silicide, titanium silicide, tantalum silicide or cobalt silicide and mixtures thereof. The column line (**410**) is formed of a metal layer. By eliminating half of the sensor array metal layer column lines, as shown in FIG. 6, the overall size of the CMOS imager device can be reduced and/or the size of the photosensitive area can be increased.

FIG. 6 shows a plurality of pixels (**501**, **502**, **503**, **504**, **505**, **506**, **507**, **508**) located in an array **500**. It should be understood that the labeled pixels of FIG. 6 generally function similar to the pixels previously described with respect to FIG. 1. Pixels **501**, **502**, **504** and **505** are connected by a shared column line **515**. Pixels **503**, **506**, **507** and **508**, for example, are connected to a second shared column line **517**. Although pixels **501**, **502**, **504** and **505** are addressed using a single column line **515**, pixel **501** is addressed by odd row line **522**, and pixel **502** is addressed by even row line **524**, pixel **504** is addressed by odd row line **526** and pixel **505** is addressed by even row line **528**. Thus, even though adjacent row pixels, e.g., **501**, **502** share a single column line, e.g., **515** their addresses are not identical.

When the active area is fabricated to be generally linear, the prior art imagers needed to fabricate the output, VDD, reset, and row select lines in the device in a non-linear configuration with conductors having perpendicular segments, as shown in FIG. 7. As can be seen from the figure, the pixel cell includes an active area **802** having a general L-shape. Every pixel cell includes a single column line **805** where the voltage of the pixel cell is output to the readout circuit via metal connection **840**. As can be seen from the figure, transfer line **850** and row line **810** each have a perpendicular segments, **851** and **811** respectively, in order to effectively connect and operate the pixel cell. The pixel cell also has a reset line **830** which has two perpendicular segments **816**. The cell is connected to VDD by line **820**.

FIG. 8 is a layout in accordance with the invention illustrating a CMOS imager having a diagonal active area component **643**, **644** and linear and orthogonal row **610**, **612** and column **605** lines and linear reset lines **614**, **616** which parallel the row lines. By fabricating an active area **601**, **602** having a diagonal component **643**, **644**, the present invention allows the fabrication of straight reset, row select, VDD and Vout column lines. The diagonal fabrication of the active area also facilitates the connection of two cells to a single shared column line, which reduces the number of column contacts over the prior arrays.

As illustrated in FIG. 8, a straight column line **605** connects two CMOS imager cells **603**, **604** at connection point **640**. The first cell **603** has an active area (sensor area) **602** which includes a diagonal component **643**. The row select transistor of the first cell **603** is addressed by even row select line **610**. The cell reset **603** is activated by reset line **614**. The gate of the source follower transistor is connected by line **630**. The cell **603** is connected to VDD by contact **620**.

The second cell **604** has an active area (sensor area) **601** which includes a diagonal component **644**. The row select transistor of the second cell **604** is addressed by odd row select line **612**. The reset transistor of cell **604** is activated by reset line **616**. The gate of the source follower transistor is connected to logic by line **632**. The cell **604** is connected to VDD by contact **622**. As illustrated in the figure, the row select lines **610**, **612** and the reset lines **614**, **616** are patterned to be straight. Additionally, the column line **605** is also straight and the two cells **603**, **604** are connected to the single

column line **605**. The active areas **601**, **602** when top viewed as in FIG. 8 for a general S-shaped configuration.

The use of a diagonal active area for the pixel allows better contact between the pixel and the associated circuit logic because the chance of forming improper contacts during fabrication is reduced with a straight line. Additionally, the diagonal active area displaces the column line contact from the VDD contacts so that the metal lines can be straight. The diagonal active area also facilitates the sharing of a single column line by adjacent row pixels.

A typical processor based system which includes a CMOS imager device according to the present invention is illustrated generally at **700** in FIG. 9. A processor based system is exemplary of a system having digital circuits which could include CMOS imager devices. Without being limiting, such a system could include a computer system, camera system, scanner, machine vision system, vehicle navigation system, video telephone system, surveillance system, auto focus system, star tracker system, motion detection system, image stabilization system and data compression system for high-definition television, all of which can utilize the present invention.

A processor system, such as a computer system, for example generally comprises a central processing unit (CPU) **744** e.g., a microprocessor, that communicates with an input/output (I/O) device **446** over a bus **752**. The CMOS imager **742** also communicates with the system over bus **752**. The CMOS imager **742** may be combined with a processor, such as a CPU **744**, a digital signal processor or microprocessor, in a single integrated circuit.

The computer system **700** also includes random access memory (RAM) **748**, and, in the case of a computer system may include peripheral devices such as a floppy disk drive **754** and a compact disk (CD) ROM drive **756** which also communicate with CPU **744** over the bus **752**. CMOS imager **742** is preferably constructed as an integrated circuit which includes an integrated circuit as previously described with respect to FIGS. 5-6 and 8.

It should again be noted that although the invention has been described with specific reference to specific CMOS circuits having a single column line and even and odd row lines, the invention has broader applicability and may be used in any imaging apparatus. For example, the invention is not limited to the diagonal active area implementation. Any physical arrangement of adjacent pixels which allows adjacent multiple cells to contact a single column line is within the scope of the present invention. Similarly, the process described above is but one method of many that could be used. Accordingly, the above description and accompanying drawings are only illustrative of preferred embodiments which can achieve the features and advantages of the present invention. It is not intended that the invention be limited to the embodiments shown and described in detail herein. The invention is only limited by the scope of the following claims.

What is claimed as new and desired to be protected by Letters Patent of the United States is:

1. An image sensing device, comprising:

an array of pixels, each pixel of the array comprising an active sensor area, wherein the array is arranged in rows and columns of the pixels, wherein the pixels are arranged in the columns and rows such that adjacent pixels share an active area between their associated active sensor areas, each shared active area providing a connection for the associated active sensor areas to a common output contact and extending in a substantially diagonal direction with respect to the arrangement of the array of pixels.

9

2. The image sensing device of claim 1, wherein sets of no more than two pixels are adjacent pixels so as to share an associated active area.

3. The image sensing device of claim 1, wherein the common output contact connects the associated active sensor areas to a shared column line.

4. An image sensing device, comprising:

a pair of pixels, each pixel of the pair comprising a respective associated active sensor area, wherein the pair of pixels share an active area between their respective associated active sensor areas, the shared active area being shared by the pair of pixels and no other pixels and extending in a substantially diagonal direction with respect to an arrangement of an array of pixels including the pair of pixels.

5. The image sensing device of claim 4, wherein the shared active area provides a connection for the respective associated active sensor areas to a common output contact.

6. The image sensing device of claim 5, wherein the common output contact provides an electrical connection for the respective associated active sensor areas to a shared column line.

7. An image sensing device, comprising:

a pair of pixels, each pixel of the pair comprising a respective associated active sensor area, wherein the pair of pixels share an active area between their respective associated active sensor areas, the shared active area being shared by the pair of pixels and no other pixels and having a two-dimensional shape comprising a first diagonal component extending from one of the respective associated active sensor areas toward a common output and a second diagonal component extending from the other of the respective associated active sensor areas toward the common output, the first and second diagonal components extending toward the common output diagonally with respect to a layout of a pixel array including the pair of pixels.

8. An image sensing device, comprising:

a pair of pixels, each pixel of the pair comprising a respective associated active sensor area, wherein the pair of pixels share an active area between their respective associated active sensor areas, the shared active area being shared by the pair of pixels and no other pixels and having two components extending from the respective associated active sensor areas toward a common output to a signal output line, the two components extending substantially diagonally with respect to an extending direction of the signal output line.

10

9. The image sensing device of claim 8, wherein the pair of pixels and the signal output line are part of a pixel array and the extending direction is across the pixel array.

10. An image sensing device, comprising:

an array of pixels, each of the pixels comprising a respective associated active sensor area, wherein the array is arranged in rows and columns of the pixels;

wherein the pixels are arranged in the columns and rows such that adjacent pixels share an active area between their respective associated active sensor areas, each shared active area providing a connection for the respective associated active sensor areas to a common output contact; and

wherein at least one of the adjacent pixels further comprises a reset transistor, said reset transistor comprising a gate, a first source/drain region, and a second source/drain region in a linear arrangement as viewed from above the array of pixels, wherein the shared active area between the adjacent pixels extends in a substantially diagonal direction relative to the linear arrangement of the reset transistor as the array of pixels is viewed from above.

11. The image sensing device of claim 10, wherein sets of no more than two pixels can be considered adjacent pixels so as to share an active area.

12. The image sensing device of claim 10, wherein the common output contact connects the adjacent pixels to a shared column line.

13. An image sensing device, comprising:

a pair of pixels, each pixel of the pair comprising a respective associated active sensor area, wherein the pair of pixels share an active area between their respective associated active sensor areas, the shared active area being shared by the pair of pixels and no other pixels, wherein at least one of the pixels of the pair of pixels further comprises a reset transistor, said reset transistor comprising a gate, a first source/drain region, and a second source/drain region in a linear arrangement as viewed from above the pixels, wherein the shared active area of the pair of pixels extends in a substantially diagonal direction relative to the linear arrangement of the reset transistor as the pair of pixels is viewed from above.

14. The image sensing device of claim 13, wherein the shared active area provides a connection for the respective associated active sensor areas to a common output contact.

15. The image sensing device of claim 14, wherein the common output contact provides an electrical connection for the respective associated active sensor areas to a shared column line.

* * * * *