

(19)



(11)

EP 1 667 480 B1

(12)

EUROPEAN PATENT SPECIFICATION

(45) Date of publication and mention
of the grant of the patent:

13.08.2014 Bulletin 2014/33

(51) Int Cl.:

H04W 74/08 ^(2009.01) **H04W 72/02** ^(2009.01)

(86) International application number:

PCT/JP2004/013483

(21) Application number: **04773142.7**

(22) Date of filing: **09.09.2004**

(87) International publication number:

WO 2005/027555 (24.03.2005 Gazette 2005/12)

(54) **RADIO PACKET COMMUNICATION METHOD AND RADIO PACKET COMMUNICATION APPARATUS**

FUNKPAKETKOMMUNIKATIONSVERFAHREN UND
FUNKPAKETKOMMUNIKATIONSVORRICHTUNG

PROCEDE DE COMMUNICATION DE PAQUETS RADIO ET APPAREIL DE COMMUNICATION DE
PAQUETS RADIO

(84) Designated Contracting States:
DE FR GB

(30) Priority: **09.09.2003 JP 2003317100**

(43) Date of publication of application:
07.06.2006 Bulletin 2006/23

(60) Divisional application:
13176473.0 / 2 654 362
13176474.8 / 2 654 363
13176475.5 / 2 654 364

(73) Proprietor: **NIPPON TELEGRAPH AND
TELEPHONE CORPORATION**
Tokyo 100-8116 (JP)

(72) Inventors:

- **NAGATA, Kengo,**
NTT Intellectual Property Center
Musashino-shi,
Tokyo 180-8585 (JP)
- **KUMAGAI, T,**
NTT Intellectual Property Center
Musashino-shi,
Tokyo 180-8585 (JP)
- **OTSUKI, Shinya,**
NTT Intellectual Property Center
Musashino-shi,
Tokyo 180-8585 (JP)

- **SAITO, Kazuyoshi,**
NTT Intellectual Property Center
Musashino-shi,
Tokyo 180-8585 (JP)
- **AIKAWA, Satoru,**
NTT Intellectual Property Center
Musashino-shi,
Tokyo 180-8585 (JP)

(74) Representative: **HOFFMANN EITLE**
Patent- und Rechtsanwälte
Arabellastrasse 4
81925 München (DE)

(56) References cited:

EP-A2- 1 263 168 **WO-A1-03/069800**
WO-A1-2004/114561 **JP-A- 7 303 090**
JP-A- 2002 198 933 **JP-A- 2003 259 430**
US-A1- 2002 176 386

- **REINHARD BECHER ET AL: "Broad-Band
Wireless Access and Future Communication
Networks", PROCEEDINGS OF THE IEEE, IEEE.
NEW YORK, US, vol. 89, no. 1, 1 January 2001
(2001-01-01), XP011044465, ISSN: 0018-9219**

Note: Within nine months of the publication of the mention of the grant of the European patent in the European Patent Bulletin, any person may give notice to the European Patent Office of opposition to that patent, in accordance with the Implementing Regulations. Notice of opposition shall not be deemed to have been filed until the opposition fee has been paid. (Art. 99(1) European Patent Convention).

EP 1 667 480 B1

- YA-HAN PAN ET AL: "Dynamic sub-channel allocation with adaptive beamforming for broadband ofdm wireless systems", GLOBECOM'02. 2002 - IEEE GLOBAL TELECOMMUNICATIONS CONFERENCE. CONFERENCE PROCEEDINGS. TAIPEI, TAIWAN, NOV. 17 - 21, 2002; [IEEE GLOBAL TELECOMMUNICATIONS CONFERENCE], NEW YORK, NY : IEEE, US, vol. 1, 17 November 2002 (2002-11-17), pages 711-715, XP010636043, DOI: 10.1109/GLOCOM.2002.1188171 ISBN: 978-0-7803-7632-8
- KOUTSOPOULOS I ET AL: "Adaptive resource allocation in SDMA-based wireless broadband networks with OFDM signaling", PROCEEDINGS IEEE INFOCOM 2002. THE CONFERENCE ON COMPUTER COMMUNICATIONS. 21ST. ANNUAL JOINT CONFERENCE OF THE IEEE COMPUTER AND COMMUNICATIONS SOCIETIES. NEW YORK, NY, JUNE 23 - 27, 2002; [PROCEEDINGS IEEE INFOCOM. THE CONFERENCE ON COMPUTER COMMUNI, vol. 3, 23 June 2002 (2002-06-23), pages 1376-1385, XP010593704, DOI: 10.1109/INFCOM.2002.1019388 ISBN: 978-0-7803-7476-8

Description

TECHNICAL FIELD

[0001] The present invention relates to a wireless packet communication method and a wireless packet communication apparatus for simultaneously transmitting a plurality of wireless packets by using multiple wireless channels or Multiple Input Multiple Output (hereinafter, MIMO).

BACKGROUND ART

[0002] In a conventional wireless packet communication apparatus, a wireless channel to be used is determined in advance. Prior to transmission of a data packet, the wireless packet communication apparatus performs carrier sense to detect whether or not that wireless channel is idle. Only when that wireless channel is idle, the wireless packet communication apparatus transmits one data packet. This management allows a plurality of stations (hereinafter, STA) to share one wireless channel in a staggered manner ((1) "International Standard ISO/IEC 8802-11 ANSI/IEEE Std 802.11, 1999 edition, Information technology - Telecommunications and information exchange between systems - Local and metropolitan area networks - Specific requirements - Part 11: Wireless LAN Medium Access Control (MAC) and Physical Layer (PHY) specifications", (2) "Low-powered Data Communication System/Broadband Mobile Access Communication System (CSMA) Standard", ARIB STD-T71 version 1.0, Association of Radio Industries and Businesses, settled in 2000).

[0003] On the other hand, a wireless packet communication method is known in which, when multiple wireless channels are found idle by carrier sense, a plurality of wireless packets are transmitted simultaneously by using the wireless channels. This method is generally described with reference to Figs. 13 and 14.

[0004] Fig. 13(1) shows a case where two wireless channels are idle for three wireless packets. Two of the three wireless packets are transmitted simultaneously by using the two wireless channels. Fig. 13(2) shows a case where three wireless channels are idle for two wireless packets. All (two) wireless packets are transmitted simultaneously by using the two wireless channels.

[0005] Fig. 14 shows a case where a known MIMO technique (Kurosaki et al., "100Mbit/s SDM-COFDM over MIMO Channel for Broadband Mobile Communications", Technical Reports of the Institute of Electronics, Information and Communication Engineers, A P 2001-96, RCS2001-135(2001-10)) is used together. In MIMO, different wireless packets are transmitted from a plurality of antennas at the same time on the same wireless channel. Those wireless packets transmitted at the same time on the same wireless channel are separated from each other by digital signal processing that can deal with a difference between propagation coefficients of the wire-

less packets received by a plurality of antennas in an opposed STA. The number of MIMOs is determined in accordance with the propagation coefficients and the like.

[0006] Fig. 14(1) shows a case where three wireless channels are idle for seven wireless packets when the number of MIMOs of each wireless channel is two. When MIMO is applied to each of the three wireless channels, up to six wireless packets can be transmitted simultaneously. Therefore, six of the above seven wireless packets are transmitted simultaneously by using the three wireless channels.

[0007] Figs. 14(2) and (3) show cases where three wireless channels are idle for four wireless packets when the Number of MIMOs of each wireless channel is two. When MIMO is applied to each of the three wireless channels, up to six wireless packets can be transmitted simultaneously. However, the number of transmission-standby wireless packets is four. Therefore, MIMO is applied to a part of the three wireless channels. For example, one of the wireless channels transmits two wireless packets by using MIMO, while each of the remaining two wireless channels transmits one wireless packet without using MIMO, as shown in Fig. 14(2). Thus, four wireless packets are transmitted simultaneously by using the three wireless channels in total. Alternatively, four wireless packets are transmitted simultaneously on two wireless channels each using MIMO, as shown in Fig. 14(3).

[0008] In the case where center frequencies of multiple wireless channels used at the same time are close to each other, an effect of leakage power from one wireless channel to a frequency region used by another wireless channel becomes large. In general, in case of transferring a wireless packet, a transmit-side STA transmits the wireless packet and thereafter a receive-side STA transmits an acknowledgment packet (Ack) for the received wireless packet to the transmit-side STA. When the transmit-side STA tries to receive this acknowledgment packet (hereinafter, ACK packet), the effect of leakage power from another wireless channel used for simultaneous transmission becomes a problem.

[0009] For example, a case is considered where center frequencies of wireless channels #1 and #2 are close to each other and transmission times of wireless packets transmitted simultaneously from the respective wireless channels are different from each other, as shown in Fig. 15. In this case, the wireless packet transmitted on the wireless channel #1 is shorter. Thus, when an ACK packet (Ack 1) for that wireless packet is received, the wireless channel #2 is performing transmission. Therefore, the wireless channel #1 may not receive that ACK packet (Ack1) because of leakage power from the wireless channel #2. In this situation, throughput cannot be improved even if simultaneous transmission is performed using multiple wireless channels at the same time.

[0010] In a wireless LAN system, for example, data sizes of data frames input from a network are not constant. Thus, in case of sequentially converting the input data frames into wireless packets for transmission, pack-

et time lengths of the wireless packets are also different. Therefore, even when a plurality of wireless packets are transmitted simultaneously at the same time, as shown in Fig. 15, the transmission time of each wireless packet is different. This increases a possibility of unsuccessful receiving of the ACK packet.

[0011] In order to overcome the above problem, there is a known method in which transmission of a plurality of wireless packets is terminated at the same time or substantially at the same time by making equal or equivalent packet time lengths (time required to transmit the wireless packets) of the wireless packets transmitted simultaneously. In this case, a transmit-side STA is not performing transmission at a timing at which ACK packets for the respective wireless packets reach the transmit-side STA. Thus, the transmit-side STA can receive all the ACK packets without being affected by leakage power between wireless channels or the like. Therefore, the throughput can be improved.

[0012] However, even if the packet time lengths of the wireless packets transmitted simultaneously are made the same, the effect of leakage power may become a problem. This case is now described with reference to Fig. 16.

[0013] At timing t1, wireless channels #1 and #2 of a transmit-side STA are idle, while a wireless channel #3 is busy. Thus, the transmit-side STA transmits wireless packets having the same packet time length by using the idle wireless channels #1 and #2. Therefore, the effect of leakage power can be avoided between the wireless channels #1 and #2. When the wireless channel #3 becomes idle during transmission of those wireless packets (at timing t2), another STA may determine that the wireless channel #3 is idle and may transmit a wireless packet to the above transmit-side STA by using the wireless channel #3. However, the transmit-side STA is transmitting the wireless packets by using the wireless channels #1 and #2 and therefore cannot receive the wireless packet on the wireless channel #3 because of leakage power from the wireless channels #1 and #2. In other words, the STA in transmission cannot receive a wireless packet transmitted on a wireless channel that is adjacent to the wireless channel being in transmission. This problem occurs not only in case of simultaneous transmission using multiple wireless channels but also in a conventional case where wireless packets are transmitted by using one wireless channel and an adjacent wireless channel that is affected by leakage power receives the wireless packets.

[0014] WO 2004/114561 A1 relates to a radio packet communication method and radio packet communication apparatus. Data packets are transmitted between two stations capable of using plural radio channels and MIMO together, by using idle channels and MIMO. When at least one idle channel has been detected, plural data packets are generated in the same number as the sum of MIMO numbers of the respective idle channels, in which the data packets are generated from one or plural data

frames, and plural data packets having the same packet time length are transmitted simultaneously between the two stations by using the idle channels and MIMO.

[0015] EP 1 263 168 A2 relates to a wireless communication apparatus in a wireless communication system employing CSMA (carrier sense multiple access). In CSMA an access point senses a carrier for transmitting the packet prior to transmitting the packet to a wireless station. The wireless communication apparatus comprises an adaptive array antenna generating a plurality of radio waves with comparatively narrow directivities to a plurality of stations. The number of antenna beams and the number of stations carrying out simultaneous communication may be arbitrarily two or more. By means of the antenna beams, the access point can communicate with the plurality of stations via the substantially same channel or adjacent channel while reducing interference between stations. The transmission data is transmitted as data packets each having the same packet length.

[0016] It is an object of the present invention to avoid leakage power from affecting an adjacent channel so as to improve throughput by simultaneous transmission.

DISCLOSURE OF THE INVENTION

[0017] This object is accomplished by the independent claims. Advantageous embodiments are described in the dependent claims.

[0018] A first example provides a wireless packet communication method for transmitting a plurality of wireless packets simultaneously by using multiple wireless channels determined to be idle by carrier sense, a single wireless channel determined to be idle and MIMO, or the multiple wireless channels and the MIMO. The wireless packet communication method includes setting a mandatory channel that is always used for transmission and transmitting the wireless packets by using a wireless channel or wireless channels that includes/include the mandatory channel, only when the mandatory channel is idle.

[0019] In other words, for transmitting a plurality of wireless packets simultaneously, transmission is performed by using the wireless channel(s) including the mandatory channel. Transmission is not performed when the mandatory channel is not idle. Moreover, wireless packets are always transmitted via wireless channels including the mandatory channel, and when the mandatory channel is busy, transmission is not performed even if there is another wireless channel. In other words, the mandatory channel can be regarded as a wireless channel having the highest priority among wireless channels that have a plurality of priorities.

[0020] A second example provides a wireless packet communication method for transmitting a plurality of wireless packets simultaneously by using multiple wireless channels determined to be idle by carrier sense, a single wireless channel determined to be idle and MIMO, or the multiple wireless channels and the MIMO. The wireless

packet communication method includes distinguishing an STA A, for which a mandatory channel always used for transmission is set, from an STA B for which no mandatory channel is set. Wireless packets addressed to the STA A are transmitted by using the wireless channel(s) including the mandatory channel, only when the mandatory channel is idle. Wireless packets addressed to the STA B are transmitted by using the idle wireless channel(s).

[0021] The STA A has a similar function as that of the invention of claim 1. The STA B for which no mandatory channel is set, is made transmittable even when the mandatory channel, is busy.

[0022] Another example is such that the plurality of wireless packets transmitted simultaneously are set to have the same or equivalent packet time length that corresponds to a packet size or a transmission time.

[0023] Another example is such that wireless packets are simultaneously transmitted selectively using the multiple wireless channels or MIMO in accordance with the number of pieces of data or the number of MIMOs that depends on a channel condition.

[0024] Another example provides a wireless packet communication apparatus for transmitting a plurality of wireless packets simultaneously by using multiple wireless channels determined to be idle by carrier sense, a wireless channel determined to be idle and MIMO, or the multiple wireless channels and the MIMO. The wireless packet communication apparatus includes a unit setting a mandatory channel that is always used for transmission and transmitting the wireless packets by using the multiple wireless channels or the wireless channel that include/includes the mandatory channel, only when the mandatory channel is idle.

[0025] Another example provides a wireless packet communication apparatus for transmitting a plurality of wireless packets simultaneously by using multiple wireless channels determined to be idle by carrier sense, a single wireless channel determined to be idle and MIMO, or the multiple wireless channels and the MIMO. The wireless packet communication apparatus includes a unit distinguishing an STA A, for which a mandatory channel that is always used for transmission is set, from an STA B for which no mandatory channel is set, and determining destinations of the wireless packets. In case of wireless packets addressed to the STA A, the unit transmits the wireless packets by using the multiple wireless channels or the wireless channel that include/includes the mandatory channel, only when the mandatory channel is idle. In case of wireless packets addressed to the STA B, the unit transmits the wireless packets by using idle wireless channel or channels.

[0026] Another example is such that the plurality of wireless packets transmitted simultaneously are set to have the same or equivalent packet time length that corresponds to a packet size or a transmission time.

[0027] Another example is such that wireless packets are simultaneously transmitted selectively using the mul-

multiple wireless channels or MIMO in accordance with the number of pieces of data or the number of MIMOs that depends on a channel condition.

BRIEF DESCRIPTION OF THE DRAWINGS

[0028]

Fig. 1 is a flowchart according to a first embodiment of the present invention.

Fig. 2 is a time chart of an exemplary operation in the first embodiment of the present invention.

Fig. 3 explains methods for reconstructing a data packet.

Fig. 4 is a flowchart according to a second embodiment of the present invention.

Fig. 5 is a time chart of an exemplary operation in the second embodiment of the present invention.

Fig. 6 is a flowchart according to a third embodiment of the present invention.

Fig. 7 is a flowchart according to a fourth embodiment of the present invention.

Fig. 8 is a flowchart according to a fifth embodiment of the present invention.

Fig. 9 is a flowchart according to a sixth embodiment of the present invention.

Fig. 10 is a flowchart according to a seventh embodiment of the present invention.

Fig. 11 is a flowchart according to an eighth embodiment of the present invention.

Fig. 12 is a block diagram of an exemplary wireless packet communication apparatus according to the present invention.

Fig. 13 explains exemplary methods for transmitting a plurality of wireless packets simultaneously by using multiple wireless channels.

Fig. 14 explains exemplary methods for transmitting a plurality of wireless packets simultaneously by using multiple wireless channels (and MIMO).

Fig. 15 explains an effect of leakage power of a wireless channel.

Fig. 16 explains a case where the effect of leakage power becomes a problem even if packet time lengths of wireless packets transmitted simultaneously are made the same.

Fig. 17 shows a structure of a wireless packet used in the wireless packet communication apparatus of the present invention.

BEST MODE FOR CARRYING OUT THE INVENTION

[First Embodiment]

[0029] Fig. 1 is a flowchart of a wireless packet communication method according to the first embodiment of the present invention. Fig. 2 is a time chart of the wireless communication method according to the first embodiment of the present invention. In this embodiment, wire-

less channels #1, #2, and #3 are provided, and the wireless channel #1 is set as a mandatory channel for every STA. Each STA is regularly notified of the mandatory channel. When the mandatory channel is busy, each STA does not perform transmission even if there is other idle wireless channel. That is, no transmission is performed. It is assumed that the wireless channels #1, #2, and #3 affect each other due to a leakage and that when one of the wireless channels is in transmission, the other channels cannot receive data.

[0030] When data is stored in a transmission buffer, an idle wireless channel is searched by carrier sense (S1 and S2). In this example, it is found that the wireless channel #3 is busy at a timing data is generated (1), and the wireless channels #1 and #2 are idle. Then, it is determined whether or not the mandatory channel is idle (S3). When the mandatory channel is busy, a procedure goes back to the search of an idle wireless channel. On the other hand, when the mandatory channel is idle, data packets are reconstructed to data packets having the same packet time length for every wireless channel in accordance with the number of idle channels and the number of transmission stand-by data packets. The reconstructed data packets are transmitted (simultaneously) (S4). In this example, since the wireless channel #1 as the mandatory channel is idle, the wireless packets is simultaneously transmitted by using two wireless channels as the wireless channels #1 and #2.

[0031] The following three methods are known data packet reconstruction methods. In the case where there is one data packet and two idle channels, for example, two data packets having the same packet time length are generated by fragmenting the data packet, as shown in Fig. 3(1). In the case where there are three data packets and two idle channels, a data packet 2 is divided into two portions and the two portions are connected to data packets 1 and 3, respectively, for example, as shown in Fig. 3(2). In this manner, two data packets having the same packet time length are generated. Alternatively, the two data packets having the same packet time length can be generated by connecting the three data packets into one block and then dividing the block into two. Alternatively, the data packets 1 and 2 may be aggregated to each other and dummy data is added to the data packet 3, as shown in Fig. 3(3), thereby obtaining two data packets having the same packet time length. Moreover, in the case where multiple wireless channels having different transmission rates are used, the packet time lengths of data packets are adjusted to be the same by associating a size ratio of each data packet with a ratio of the transmission rates.

[0032] Even when the wireless channel #3 becomes idle, another STA does not perform transmission because the wireless channel #1 set as the mandatory channel is busy. On the other hand, at a timing data is generated (2), all the wireless channels including the wireless channel #1 set as the mandatory channel are idle. Therefore, each STA becomes transmittable. For

example, in the case where an STA transmits the wireless packets at the timing data is generated (1), another STA transmits a wireless packet to the STA having transmitted at the timing data is generated (2).

[Second Embodiment]

[0033] Fig. 4 is a flowchart of a wireless packet communication method according to the second embodiment of the present invention. Fig. 5 is a time chart of that wireless packet communication method. In this embodiment, there are an STA A for which a mandatory channel is set and an STA B for which no mandatory channel is set. There is no specific limitation to transmission to the STA B, while transmission to the STA A is allowed only when the mandatory channel is idle, and is not performed when the mandatory channel is busy even if another wireless channel is idle. Please note that in the first embodiment a mandatory channel is set for every STA so that packet transmission is always performed via wireless channels including the mandatory channel without an address of a wireless packet being considered.

[0034] First, when data is stored in a transmission buffer, an idle wireless channel is searched by carrier sense (S1 and S2). In this example, it is found that at a timing data is generated (1), a wireless channel #3 is busy and wireless channels #1 and #2 are idle. Then, an address of one data packet stored in the transmission buffer is decoded (S11), and it is determined whether or not any mandatory channel is set for an STA that is the decoded address (S12). When a mandatory channel is set for the receive-side STA, it is determined whether or not that mandatory channel is idle (S13). When that mandatory channel is idle, transmission stand-by data packets are reconstructed to have the same packet time length for every wireless channel in accordance with the number of idle channels and the number of the transmission stand-by data packets. The reconstructed data packets are transmitted (simultaneously) (S4). In this example, for wireless packets addressed to the STA A, simultaneous transmission is performed using two wireless channels as the wireless channels #1 and #2 because the wireless channel #1 set as the mandatory channel is idle.

[0035] On the other hand, when no mandatory channel is set for the receive-side STA in S12, the state of the mandatory channel need not be considered so that the transmission stand-by data packets are reconstructed to have the same packet time length for every wireless channel in accordance with the number of idle channels and the number of the transmission stand-by data packets. The reconstructed data packets are transmitted (simultaneously) (S4). Moreover, when the mandatory channel is not idle in S13, the wireless packet cannot be transmitted to the STA A for which the mandatory channel is set. Therefore, it is then determined whether or not there is another data packet in the transmission buffer (S14). With a presence of a data packet therein, a procedure returns to decoding of an address of the data

packet in S11. With no data packet, an idle channel is searched in S2.

[0036] In this example, when the wireless channel #3 becomes idle, transmission of a wireless packet to the STA B in which no mandatory channel is set using the wireless channel #3 becomes possible. On the other hand, transmission of a wireless packet to the STA A using the wireless channel #3 is not performed because the wireless channel #1 is busy, and has to wait until the wireless channel #1 becomes idle.

[0037] At a timing data is generated (2), the wireless channels #1 and #2 are idle. Therefore, wireless packets addressed to the STA A for which the mandatory channel is set and to the STA B for which no mandatory channel is set can be transmitted by using the wireless channels #1 and #2.

[Third Embodiment]

[0038] Fig. 6 is a flowchart of a wireless packet communication method according to the third embodiment of the present invention. This embodiment has a feature in using MIMO additionally for simultaneous transmission of wireless packets in the first embodiment as well as in reconstructing wireless packets in S4 in the first embodiment such that reconstructed wireless packets have the same packet time length for the number of simultaneous transmissions that corresponds to a total number of MIMO of idle channels (S5). Except for the above, this embodiment is the same as the first embodiment.

[Fourth Embodiment]

[0039] Fig. 7 is a flowchart of a wireless packet communication method according to the fourth embodiment of the present invention. This embodiment has the following feature.

[0040] In case of applying MIMO to simultaneous transmission of wireless packets, antenna correlation is obtained from propagation coefficients prior to reconstruction of wireless packets to wireless packets having the same packet time length for the number of simultaneous transmissions that corresponds to a total number of MIMO of idle channels in S5 in the third embodiment. Then, the number of MIMO that that can be multiplexed in one channel is obtained by using a predetermined threshold value (S6). Except for the above, this embodiment is the same as the third embodiment.

[Fifth Embodiment]

[0041] Fig. 8 is a flowchart of a wireless packet communication method according to the fifth embodiment of the present invention. This embodiment has a feature that simultaneous transmission using multiple wireless channels as described in the first embodiment or simultaneous transmission using MIMO as described in the third embodiment is selected in accordance with the

number of pieces of data stored in the transmission buffer or the number of MIMO as described in the fourth embodiment that depends on a channel condition (S7). In accordance with this selection, wireless packets are reconstructed to have the same packet time length for the number of idle channels or the Number of MIMO. The reconstructed packets are transmitted simultaneously (S4 and S8). Except for the above, this embodiment is the same as the first embodiment.

[Sixth Embodiment]

[0042] Fig. 9 is a flowchart of a wireless packet communication method according to the sixth embodiment of the present invention. This embodiment has a feature that MIMO is applied to simultaneous transmission of wireless packets in the second embodiment. More specifically, wireless packets in S4 in the second embodiment is reconstructed in such a manner that reconstructed wireless packets have the same packet time length for the number of simultaneous transmissions that corresponds to a total number of MIMO of idle channels (S5). Except for the above, this embodiment is the same as the second embodiment.

[Seventh Embodiment]

[0043] Fig. 10 is a flowchart of a wireless packet communication method according to the seventh embodiment of the present invention. This embodiment has the following feature. In case of applying MIMO to simultaneous transmission of wireless packets, antenna correlation is obtained from propagation coefficients prior to reconstruction of wireless packets to wireless packets having the same packet time length for the number of simultaneous transmissions that corresponds to a total number of MIMO of idle channels in S5 in the sixth embodiment. Then, the number of MIMO that can be multiplexed in one channel is obtained by using a predetermined threshold value (S6). Except for the above, this embodiment is the same as the sixth embodiment.

[Eighth Embodiment]

[0044] Fig. 11 is a flowchart of a wireless packet communication method according to the eighth embodiment of the present invention. This embodiment has a feature that simultaneous transmission using multiple wireless channels as described in the second embodiment or simultaneous transmission using MIMO as described in the sixth embodiment is selected in accordance with the number of pieces of data stored in the transmission buffer or the number of MIMO described in the seventh embodiment that depends on a channel condition (S7). In accordance with this selection, reconstruction of wireless packets is performed in such a manner that reconstructed wireless packets have the same packet time length for the number of idle channels or the Number of MIMO.

The reconstructed wireless packets are transmitted simultaneously (S4 and S8). Except for the above, this embodiment is the same as the second embodiment.

[Exemplary structure of a wireless packet communication apparatus]

[0045] Fig. 12 shows an exemplary structure of a wireless packet communication apparatus of the present invention. Although the following description will be directed to the structure of the wireless packet communication apparatus capable of transmitting and receiving three wireless packets simultaneously by using three wireless channels #1, #2, and #3, the number of simultaneously transmittable/receivable wireless packets may be set arbitrarily. Where MIMO is used for each wireless channel, wireless packets can be transmitted and received simultaneously in the number of simultaneous transmissions that is equal to the sum of MIMO numbers of multiple wireless channels. However, the MIMO will not be taken into consideration in the following description as well as a case where multiple wireless channels are independently used.

[0046] In Fig. 12, the wireless packet communication apparatus includes a transmission/reception block 10-1, 10-2, and 10-3, a transmission buffer 21, a data packet generating block 22, a data frame management block 23, an analyzer of channels' occupation status 24, a packet switching block 25, a packet order management block 26, and a data frame extraction block 27.

[0047] The transmission/reception blocks 10-1, 10-2, and 10-3 perform wireless communication via different wireless channels #1, #2, and #3, respectively. These wireless channels are independent of each other because they have different wireless frequencies from each other, therefore, the blocks can perform wireless communication using multiple wireless channels at the same time. Each transmission/reception block 10 includes a modulator 11, a transmitter 12, an antenna 13, a receiver 14, a demodulator 15, a frame selection block 16, and a carrier sense block 17.

[0048] Radio frequency signals transmitted from another wireless packet communication apparatus via different wireless channels #1, #2, and #3 are input to the receivers 14 through the antennas 13 of the transmission/reception block 10-1, 10-2, and 10-3, respectively. Each receiver 14 corresponding to each wireless channel performs a reception processing on the input radio frequency signal. The reception processing contains frequency conversion, filtering, quadrature detection, and AD conversion. A radio frequency signal on a wireless propagation path of each wireless channel is always input to the corresponding receiver 14 except during periods the antenna 13 connected to the receiver 14 is used for transmission. The receiver 14 outputs, to the carrier sense block 17, an RSSI signal indicating a received electric field strength of each wireless channel. When receiving a radio frequency signal on the corresponding wire-

less channel, the receiver 14 outputs to the demodulator 15 a baseband signal for which the reception processing is performed.

[0049] The demodulator 15 performs a demodulation processing on the baseband signal input from the receiver 14, and outputs a resulting data packet to the frame selection block 16. The frame selection block 16 performs CRC check on the input data packet. In the case where the data packet has been received correctly, the frame selection block 16 determines whether or not the data packet is directed to an own STA. More specifically, the frame selection block 16 determines whether or not a receive-side STA ID of the data packet is coincident with ID of the own STA. Then, the frame selection block 16 outputs the data packet addressed to the own STA to the packet order management block 26 while transmitting to the modulator 1 an ACK packet generated in an ACK packet generating block (not shown) and performs a reply processing. In transmission of the ACK packet, a transmission mode may be set in such a manner that a transmission rate is set or MIMO is not applied. On the other hand, when the data packet is not directed to the own STA, the frame selection block 16 discards the data packet.

[0050] The packet order management block 26 checks sequence numbers added to received data packets and rearranges the received data packets in an appropriate order, i.e., in order of sequence numbers. The rearranged data packets are output to the data frame extraction block 27 as received data packets. The data frame extraction block 27 removes a packet header from each of the data packets contained in the received data packets, and outputs the resulting data packets as received data frames.

[0051] When receiving an RSSI signal, the carrier sense block 17 compares a value of a received electric field strength represented by the RSSI signal with a preset threshold value. When a state where the received electric field strength is smaller than the threshold value continues for a predetermined period, the carrier sense block 17 determines that the assigned wireless channel is idle. Otherwise, the carrier sense block 17 determines that the assigned wireless channel is busy. The carrier sense blocks 17 corresponding to the respective wireless channels output the determination results as carrier sense results CS1 to CS3. Please note that in each transmission/reception block 10, no RSSI signal is input to the carrier sense block 17 while the antenna 13 is in transmission. Moreover, in the case where the antenna 13 has already been in a transmission state, it is not possible to simultaneously transmit another data packet as a radio frequency signal by means of the same antenna 13. Therefore, when receiving the RSSI signal, each carrier sense block 17 outputs the carrier sense result indicating that the wireless channel assigned thereto is busy.

[0052] The carrier sense results CS1 to CS3 that are output from the carrier sense blocks 17 corresponding to the respective wireless channels are input to the analyzer of channels' occupation status 24. The analyzer

of channels' occupation status 24 manages an idle status of each wireless channel based on the corresponding carrier sense result and notifies the data frame management block 23 of information on an idle wireless channel, the number of idle channels, and the like (Fig. 12, a).

[0053] On the other hand, sent data frames to be transmitted are input to and buffered in the transmission buffer 21. The sent data frames consists one or more data frames. The transmission buffer 21 successively notifies the data frame management block 23 of the number of data frames the transmission buffer 21 currently stores, ID information of a receive-side wireless packet communication apparatus, a data size, address information indicating a position in the buffer, and other information (b).

[0054] The data frame management block 23 determines how to generate data packets from which data frame and on which wireless channel to transmit, according to information about data frames for each receive-side STA ID from the transmission buffer 21 and information about the wireless channels from the analyzer of channels' occupation status 24. The data frame management block 23 then notifies the transmission buffer 21, the data packet generating block 22, and the data packet switching block 25 of the determined data frame, generation manner, and wireless channel, respectively (c, d, and e). For example, in the case where the number N of idle wireless channels including the mandatory channel is smaller than the number K of transmission stand-by data frames in the transmission buffer 21, the number N of idle wireless channels including the mandatory channel is determined as the number of data packets transmitted simultaneously. The transmission buffer 21 is notified of address information to designate N data frames from the K data frames (c). The data packet generating block 22 is notified of information necessary for generating N data packets from data frames input from the transmission buffer 21 (d). The packet switching block 25 is instructed to associate the N data packets generated by the data packet generating block 22 with the idle wireless channels (e).

[0055] According to an output instruction, the transmission buffer 21 outputs the data frames to the data packet generating block 22 (f). The data packet generating block 22 extracts data fields from the respective data frames to generate a plurality of data blocks having the same packet time length, and adds a packet header and a CRC code (FCS region) to each of the data blocks to generate data packets shown in Fig. 17. The packet header contains ID information on a receive-side STA as a destination of the corresponding data packet, control information such as a sequence number indicating an order of the data frame, and other information. The control information also contains information required for a receive-side STA to convert a data packet into the original data frame when it receives the data packet. The packet switching block 25 associates the data packets input from the data packet generating block 22 with the respective wireless channels.

[0056] As a result, the data packet associated with the wireless channel #1 is input to the modulator 11 in the transmission/reception block 10-1; the data packet associated with the wireless channel #2 is input to the modulator 11 in the transmission/reception block 10-2; and the data packet associated with the wireless channel #3 is input to the modulator 11 in the transmission/reception block 10-3. When receiving a data packet from the packet switching block 25, each modulator 11 performs a predetermined modulation processing on the data packet and outputs the processed data packet to the transmitter 12. Each transmitter 12 performs a transmission processing on the modulated data packet input from the modulator 11. The transmission processing contains DA conversion, frequency conversion, filtering, and power amplification. After the transmission processing, each transmitter 12 transmits the processed data packet as a wireless packet on the corresponding wireless channel via the corresponding antenna 13.

[0057] The processings described in the first to eight embodiments are performed under a control of the data frame management block 23 with the mandatory channel taken into consideration. This can prevent a situation that a wireless packet cannot be received by use of multiple wireless channels because of leakage of power from one channel to an adjacent channel.

INDUSTRIAL A VAILABILITY

[0058] According to the present invention, while a transmit-side STA is in transmission using one or more wireless channels including a mandatory channel, the other STAs do not perform transmission to the transmit-side STA. Thus, it is possible to avoid a situation that the transmit-side STA cannot receive a wireless packet addressed to an own STA. On the other hand, the other STAs can surely transfer a wireless packet to the transmit-side STA by transmitting the wireless packet after the mandatory channel becomes idle. Thus, throughput can be improved.

[0059] Moreover, in the case where there is an STA for which no mandatory channel is set, transmission is enabled between STAs including the STA even when the mandatory channel is busy. Thus, reduction of the throughput can be suppressed.

Claims

1. A wireless packet communication method for transmitting a plurality of wireless packets having equal packet time lengths simultaneously by using multiple wireless channels (Ch#1, Ch#2) determined to be idle by carrier sense and by using MIMO, the method **characterized by** comprising:

setting a mandatory channel among multiple wireless channels that is always used for trans-

- mission and has the highest priority among wireless channels that have a plurality of priorities; transmitting the wireless packets by using wireless channels (Ch#1, Ch#2) that include the mandatory channel, only when the mandatory channel is idle; and refraining from transmitting wireless packets by another station on a channel (Ch#3) determined to be idle, when the mandatory channel is busy.
2. Wireless packet communication method according to claim 1, comprising:
- distinguishing a STA A from a STA B, the STA A for which the mandatory channel is set, the STA B for which no mandatory channel is set; and when wireless packets are addressed to said STA A, transmitting the wireless packets to said STA A by using wireless channels (Ch#1, Ch#2) that include the mandatory channel, only when the mandatory channel is idle; and when wireless packets are addressed to said STA B, transmitting the wireless packets to said STA B by using idle wireless channel or channels (Ch#1, Ch#2).
3. The wireless packet communication method according to claim 1 or 2, **characterized in that** the packet time length corresponds to a packet size or a transmission time.
4. The wireless packet communication method according to claim 1 or 2, **characterized by** further comprising simultaneously transmitting wireless packets selectively using the multiple wireless channels (Ch#1, Ch#2) or the MIMO in accordance with a number of pieces of data or a number of MIMOs that depends on a channel condition.
5. A wireless packet communication system for transmitting a plurality of wireless packets having equal packet time lengths simultaneously by using multiple wireless channels (Ch#1, Ch#2) determined to be idle by carrier sense and by using MIMO, the system **characterized by** comprising a unit (23) setting a mandatory channel among multiple wireless channels that is always used for transmission and has the highest priority among wireless channels that have a plurality of priorities, and transmitting the wireless packets only when the mandatory channel is idle by using wireless channels (Ch#1, Ch#2) that include the mandatory channel; and a station refraining from transmitting wireless packets on a channel (Ch#3) determined to be idle, when

the mandatory channel is busy.

6. Wireless packet communication system according to claim 5, comprising a unit (23) distinguishing a STA A from a STA B and determining destinations of the wireless packets so as to transmit wireless packets addressed to said STA A only when the mandatory channel is idle by using wireless channels (Ch#1, Ch#2) that include a mandatory channel, and to transmit wireless packets addressed to said STA B by using idle wireless channel or channels (Ch#1, Ch#2), the STA A for which the mandatory channel is set, the STA B for which no mandatory channel is set.
7. The wireless packet communication system according to claim 5 or 6, **characterized in that** the packet time length corresponds to a packet size or a transmission time.
8. The wireless packet communication system according to claim 5 or 6, **characterized by** further comprising:
- a unit simultaneously transmitting wireless packets selectively using the multiple wireless channels (Ch#1, Ch#2) or the MIMO in accordance with a number of pieces of data or a number of MIMOs that depends on a channel condition.

Patentansprüche

1. Funkpaketkommunikationsverfahren zum Übertragen von mehreren Funkpaketen aufweisend gleiche Paketzeitlängen gleichzeitig durch Anwenden mehrfacher Funkkanäle (Ch#1, Ch#2), die durch Carrier Sense und durch Anwenden von MIMO als leerlaufend befunden werden, wobei das Verfahren **dadurch gekennzeichnet ist, dass** es Folgendes aufweist:

Festlegen eines vorgeschriebenen Kanals unter mehreren Funkkanälen, der immer für eine Übertragung benutzt wird und unter den Funkkanälen, die mehrere Prioritäten aufweisen, die höchste Priorität hat;
Übertragen der Funkpakete durch Anwenden von Funkkanälen (CH#1, CH#2), die den vorgeschriebenen Kanal einschließen, nur wenn sich der vorgeschriebene Kanal im Leerlauf befindet; und
Unterlassen eines Übertragens von Funkpaketen durch eine andere Station auf einem Kanal (CH#3), der als leerlaufend bestimmt wird, wenn der vorgeschriebene Kanal besetzt ist.

2. Funkpaketkommunikationsverfahren nach An-

spruch 1, aufweisend:

Unterscheiden einer STA A von einer STA A, die STA A ist für den vorgeschriebenen Kanal, die STA B für den nicht vorgeschriebenen Kanal festgelegt; und
wenn Funkpakete an die STA A adressiert sind, Übertragen der Funkpakete an die STA A durch Anwenden von Funkkanälen (Ch#1, Ch#2), die den vorgeschriebenen Kanal einschließen, nur wenn sich der vorgeschriebene Kanal im Leerlauf befindet; und
wenn Funkpakete an die STA B adressiert sind, Übertragen der Funkpakete an die STA B durch Anwenden von des leerlaufenden Kanals oder der leerlaufenden Kanäle (Ch#1, Ch#2).

3. Funkpaketkommunikationsverfahren nach Anspruch 1 oder 2, **dadurch gekennzeichnet, dass** die Paketzeitlänge einer Paketgröße oder einer Übertragungszeit entspricht.

4. Funkpaketkommunikationsverfahren nach Anspruch 1 oder 2, **dadurch gekennzeichnet, dass** das Verfahren ferner Folgendes aufweist:

gleichzeitiges Übertragen von Funkpaketen durch selektives Anwenden der mehrfachen Funkkanäle (Ch#1, Ch#2) oder von MIMO in Übereinstimmung mit einer Anzahl von Datenanteilen oder einer Anzahl von MIMO, die von einem Kanalzustand abhängig ist.

5. Funkpaketkommunikationssystem zum Übertragen von mehreren Funkpaketen aufweisend gleiche Paketzeitlängen gleichzeitig durch Anwenden mehrfacher Funkkanäle (Ch#1, Ch#2), die durch Carrier Sense und durch Anwenden von MIMO als leerlaufend befunden werden, wobei das System **dadurch gekennzeichnet ist, dass** es Folgendes aufweist:

eine Einheit (23), die einen vorgeschriebenen Kanal unter mehreren Kanälen festlegt, der immer für Übertragung benutzt wird und die höchste Priorität unter Funkkanälen hat, die mehrere Prioritäten haben,
und Übertragen der Funkpakete nur, wenn sich der vorgeschriebene Kanal im Leerlauf befindet unter Anwenden von Funkkanälen (Ch#1, Ch#2), die den vorgeschriebenen Kanal aufweisen; und
eine Station, die ein Übertragen von Funkpaketen auf einem Kanal (Ch#3), der als leerlaufend befunden wird,
nur wenn der vorgeschriebene Kanal besetzt ist.

6. Funkpaketkommunikationssystem nach Anspruch 5, aufweisend:

eine Einheit (23), die zwischen einer STA A und einer STA B unterscheidet und die Ziele der Funkpakete bestimmt, um an die STA A adressierte Funkpakete nur zu übertragen, wenn sich der vorgeschriebene Kanal im Leerlauf befindet, durch ein Anwenden von Funkkanälen (Ch#1, Ch#2), die einen vorgeschriebenen Kanal aufweisen, und zum Übertragen von an die STA B adressierten Funkpaketen durch Anwenden von eines leerlaufenden Funkkanals oder leerlaufenden Funkkanälen (Ch#1, Ch#2), wobei für die STA A der vorgeschriebene Kanal und für die STA B kein vorgeschriebener Kanal festgelegt ist.

7. Funkpaketkommunikationssystem nach Anspruch 5 oder 6, **dadurch gekennzeichnet, dass** die Paketzeitlänge einer Paketgröße oder einer Übertragungszeit entspricht.

8. Funkpaketkommunikationssystem nach Anspruch 5 oder 6, **dadurch gekennzeichnet, dass** das Gerät ferner Folgendes aufweist:

eine Einheit, die gleichzeitig Funkpakete unter selektivem Anwenden der mehreren Funkkanäle (Ch#1, Ch#2) oder von MIMO in Übereinstimmung mit einer Anzahl von Datenanteilen oder einer Anzahl von MIMO, die von einem Kanalzustand abhängig ist.

Revendications

1. Procédé de communication de paquets sans fil permettant de transmettre une pluralité de paquets sans fil ayant des durées de paquet égales simultanément en utilisant plusieurs canaux sans fil (Ch#1, Ch#2) déterminés comme étant inactifs par écoute de porteuse et en utilisant une technique MIMO, le procédé étant **caractérisé en ce qu'il** comprend le fait :

d'établir un canal obligatoire parmi plusieurs canaux sans fil qui est toujours utilisé pour la transmission et présente la priorité la plus élevée parmi des canaux sans fil qui présentent une pluralité de priorités ;
de transmettre les paquets sans fil en utilisant des canaux sans fil (Ch#1, Ch#2) qui comportent le canal obligatoire, uniquement lorsque le canal obligatoire est inactif ; et
d'empêcher la transmission, des paquets sans fil par une autre station sur un canal (Ch#3) déterminé comme étant inactif, lorsque le canal obligatoire est occupé.

2. Procédé de communication de paquets sans fil selon la revendication 1, comprenant le fait :

- de distinguer une STA A d'une STA B, la STA A pour laquelle le canal obligatoire est établi, la STA B pour laquelle aucun canal obligatoire n'est établi ; et
de transmettre, lorsque des paquets sans fil sont adressés à ladite STA A, les paquets sans fil à ladite STA A en utilisant des canaux sans fil (Ch#1, Ch#2) qui comportent le canal obligatoire, uniquement lorsque le canal obligatoire est inactif ; et
de transmettre, lorsque des paquets sans fil sont adressés à ladite STA B, les paquets sans fil à ladite STA B en utilisant un canal ou des canaux sans fil inactif (s) (Ch#1, Ch#2).
3. Procédé de communication de paquets sans fil selon la revendication 1 ou 2, **caractérisé en ce que** la durée de paquet correspond à une taille de paquet ou à un temps de transmission.
4. Procédé de communication de paquets sans fil selon la revendication 1 ou 2, **caractérisé en ce qu'il** comprend en outre le fait
de transmettre simultanément des paquets sans fil de manière sélective en utilisant les plusieurs canaux sans fil (Ch#1, Ch#2) ou la technique MIMO en fonction d'un certain nombre d'éléments de données ou d'un certain nombre de techniques MIMO qui dépend d'une condition de canal.
5. Système de communication de paquets sans fil destiné à transmettre une pluralité de paquets sans fil ayant des durées de paquet égales simultanément en utilisant plusieurs canaux sans fil (Ch#1, Ch#2) déterminés comme étant inactifs par écoute de porteuse et en utilisant une technique MIMO, l'système étant **caractérisé en ce qu'il** comprend
une unité (23) établissant un canal obligatoire parmi plusieurs canaux sans fil qui est toujours utilisé pour la transmission et présente la priorité la plus élevée parmi
des canaux sans fil qui présentent une pluralité de priorités, et transmettant les paquets sans fil uniquement lorsque le canal obligatoire est inactif en utilisant des canaux sans fil (Ch#1, Ch#2) qui comportent le canal obligatoire ; et
une station empêchant la transmission des paquets sans fil sur un canal (Ch#3) déterminé comme étant inactif, lorsque le canal obligatoire est occupé.
6. Système de communication de paquets sans fil selon la revendication 5, comprenant
une unité (23) distinguant une STA A d'une STA B et déterminant des destinations des paquets sans fil de manière à transmettre des paquets sans fil adressés à ladite STA A uniquement lorsque le canal obligatoire est inactif en utilisant des canaux sans fil (Ch#1, Ch#2) qui comportent un canal obligatoire,
- et à transmettre des paquets sans fil adressés à ladite STA B en utilisant un canal ou des canaux sans fil inactif (s) (Ch#1, Ch#2), la STA A pour laquelle le canal obligatoire est établi, la STA B pour laquelle aucun canal obligatoire n'est établi.
7. Système de communication de paquets sans fil selon la revendication 5 ou 6, **caractérisé en ce que** la durée de paquet correspond à une taille de paquet ou à un temps de transmission.
8. Système de communication de paquets sans fil selon la revendication 5 ou 6, **caractérisé en ce qu'il** comprend en outre :
une unité transmettant simultanément des paquets sans fil de manière sélective en utilisant les plusieurs canaux sans fil (Ch#1, Ch#2) ou la technique MIMO en fonction d'un certain nombre d'éléments de données ou d'un certain nombre de techniques MIMO qui dépend d'une condition de canal.

FIG. 1

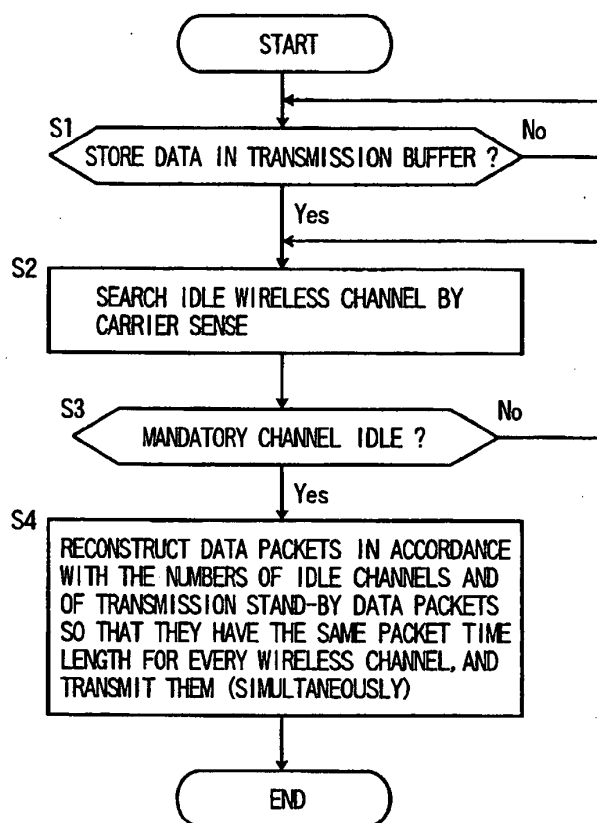


FIG. 2

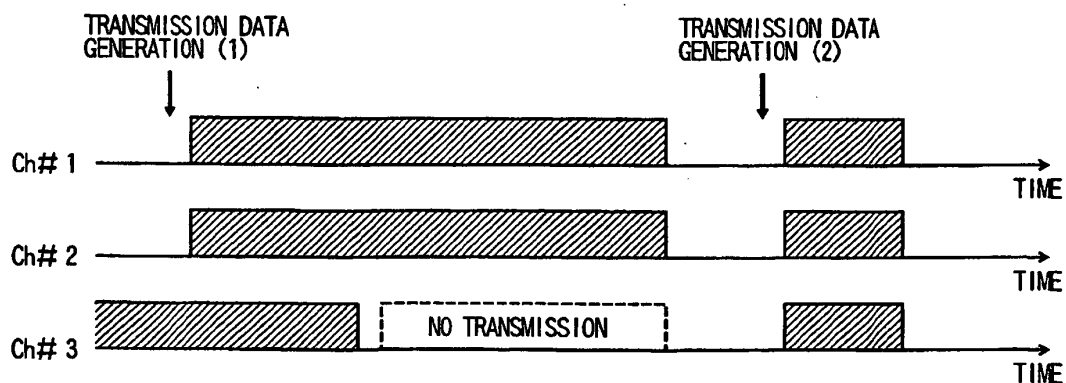


FIG. 3

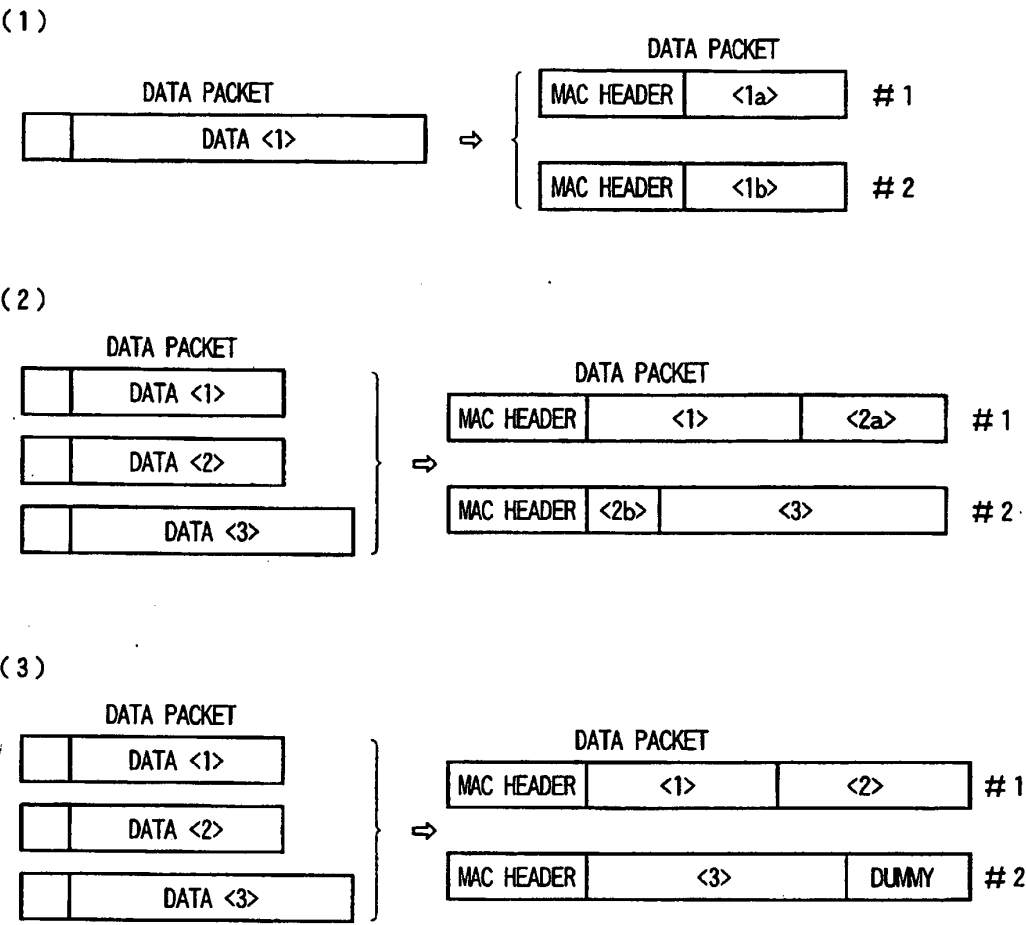


FIG. 4

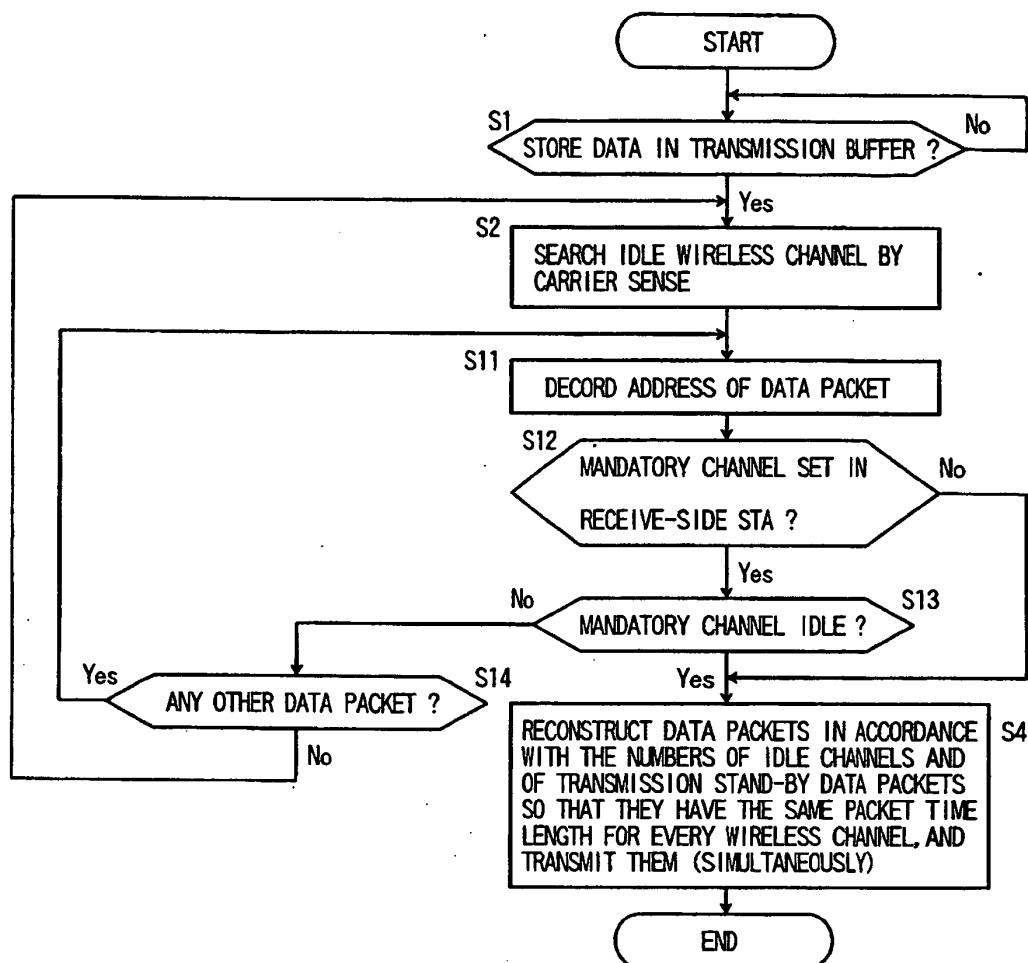


FIG. 5

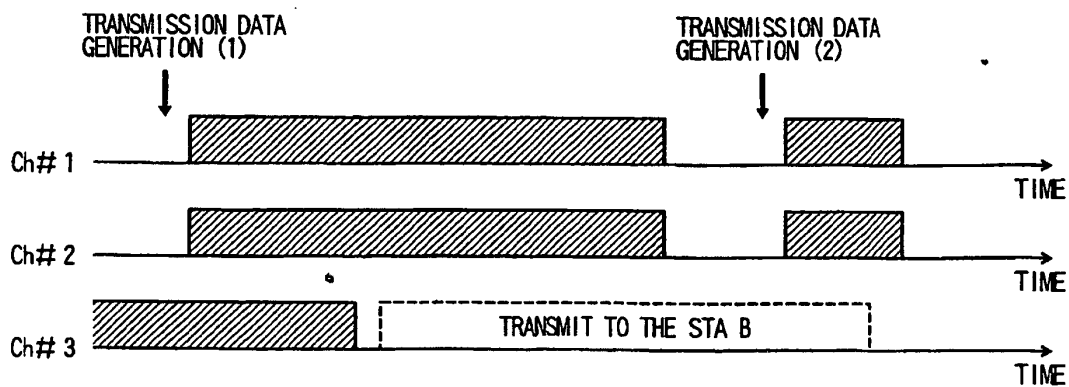


FIG. 6

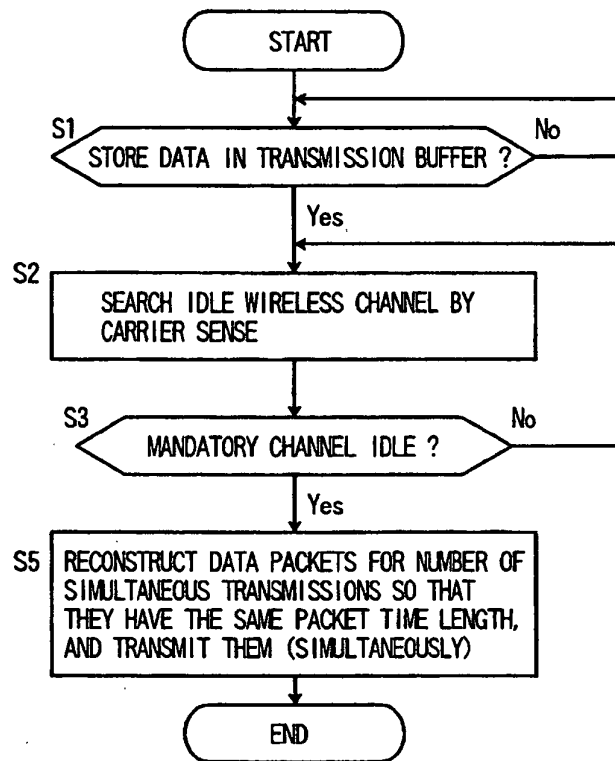


FIG. 7

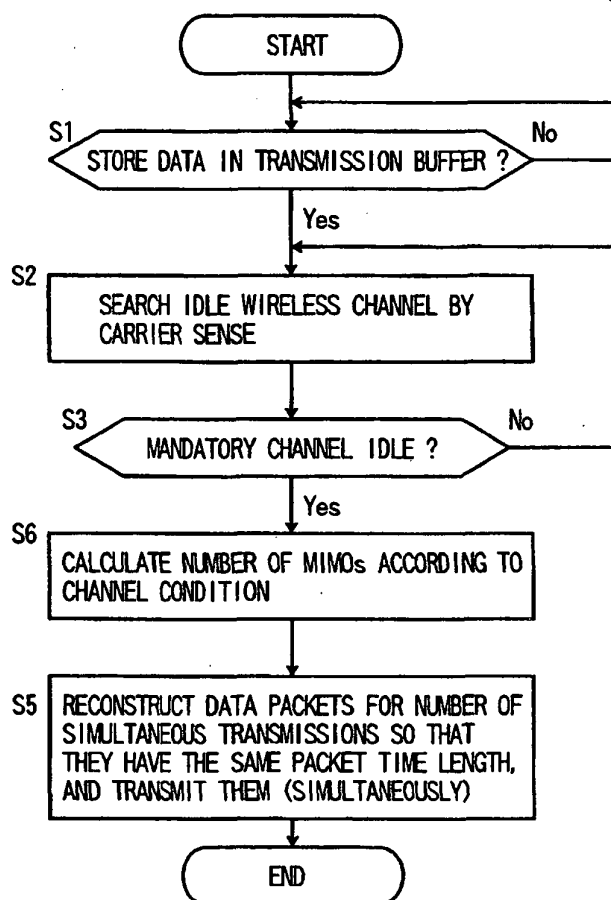


FIG. 8

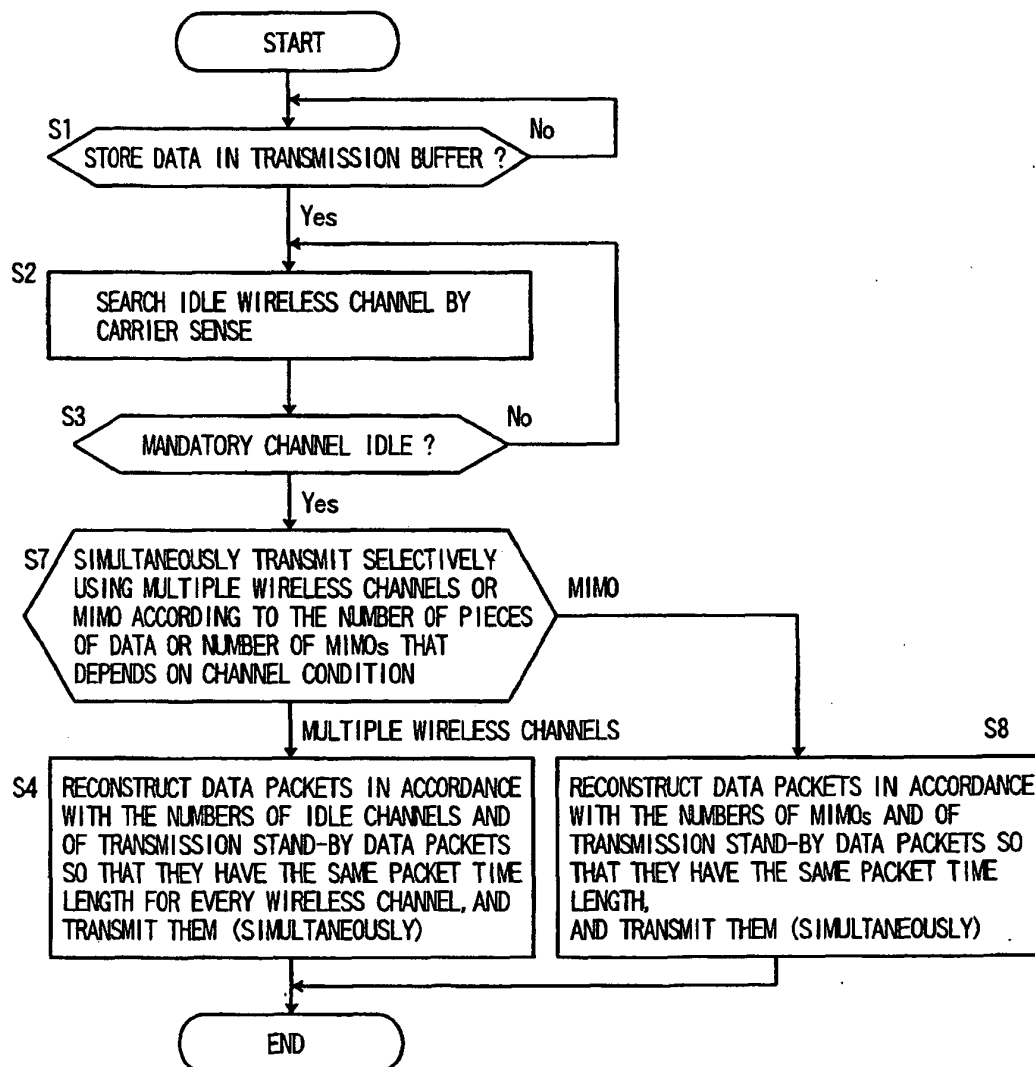


FIG. 9

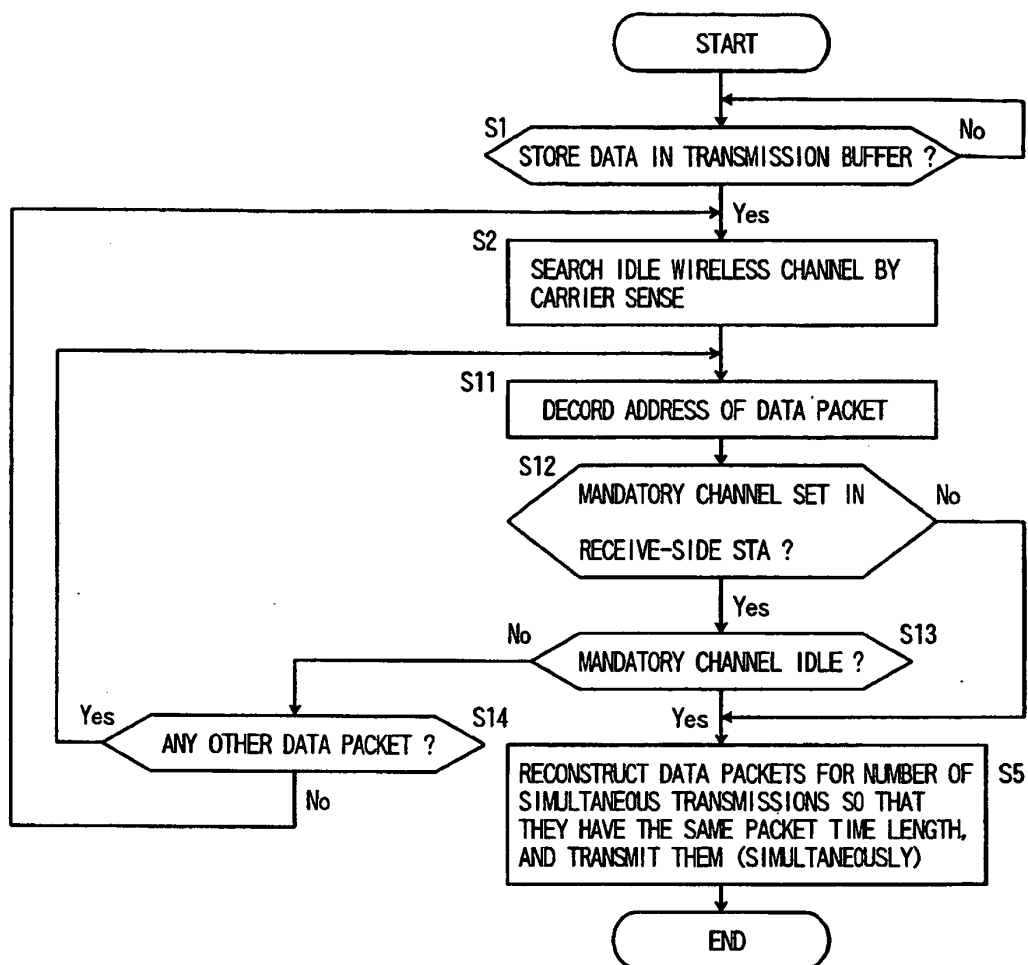


FIG. 10

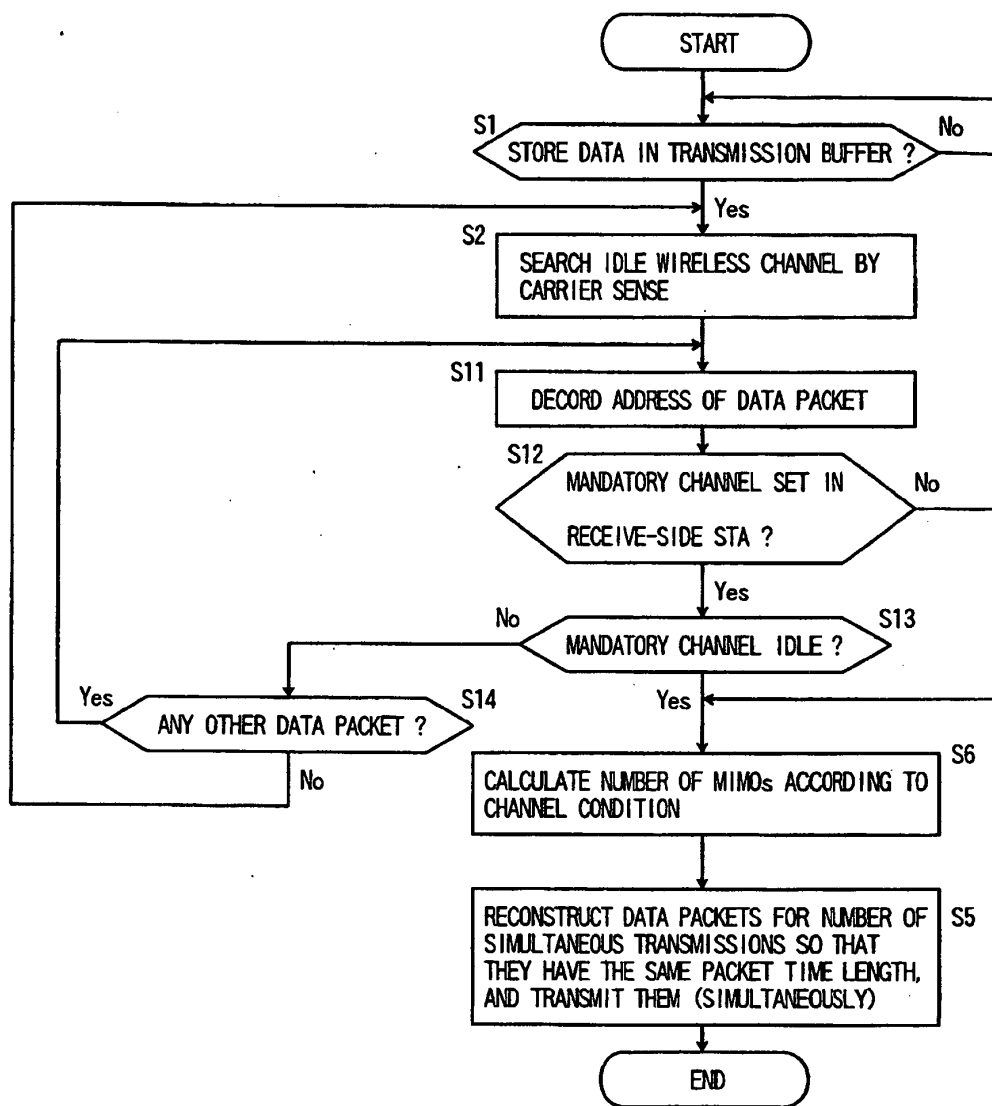


FIG. 11

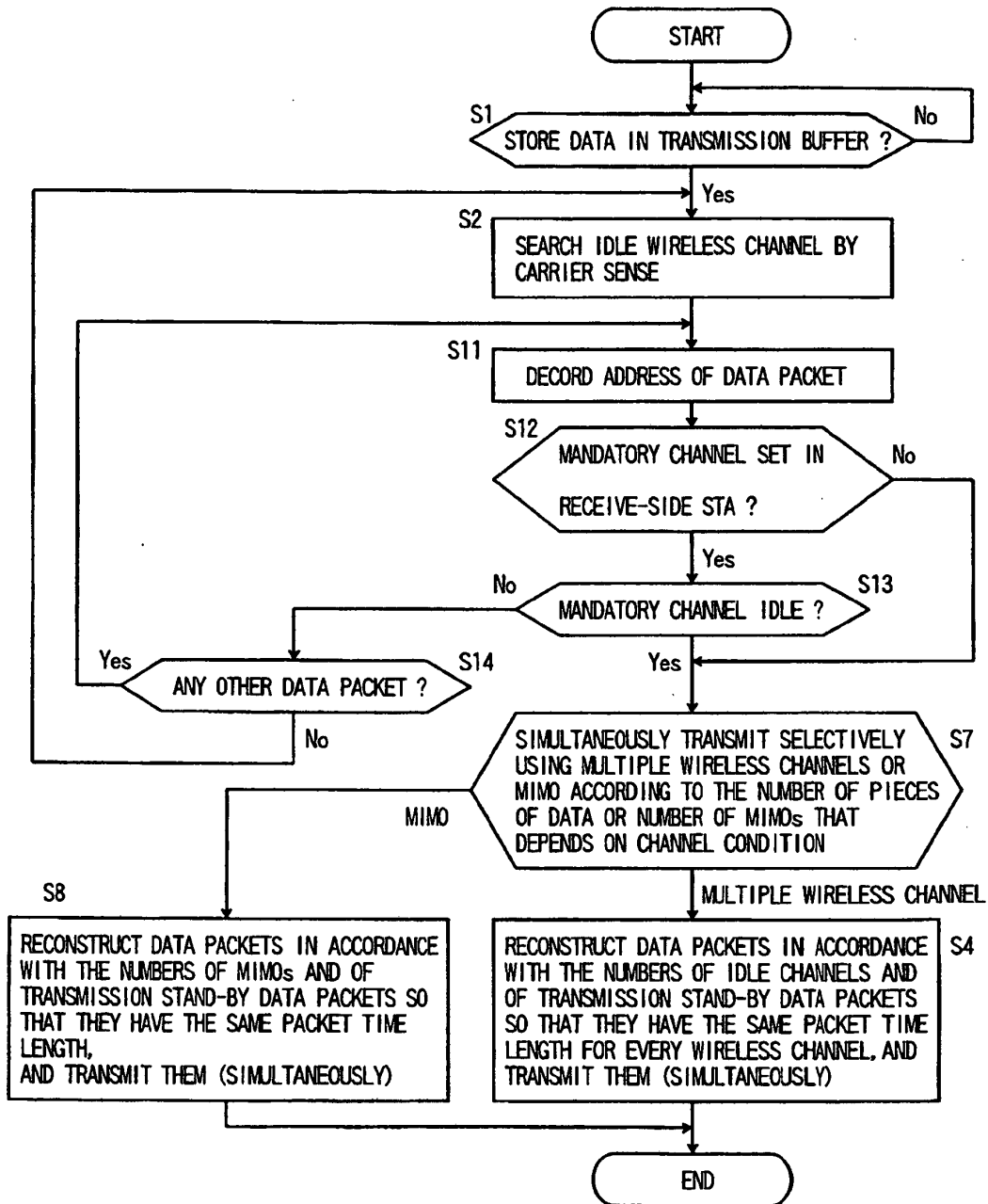


FIG. 12

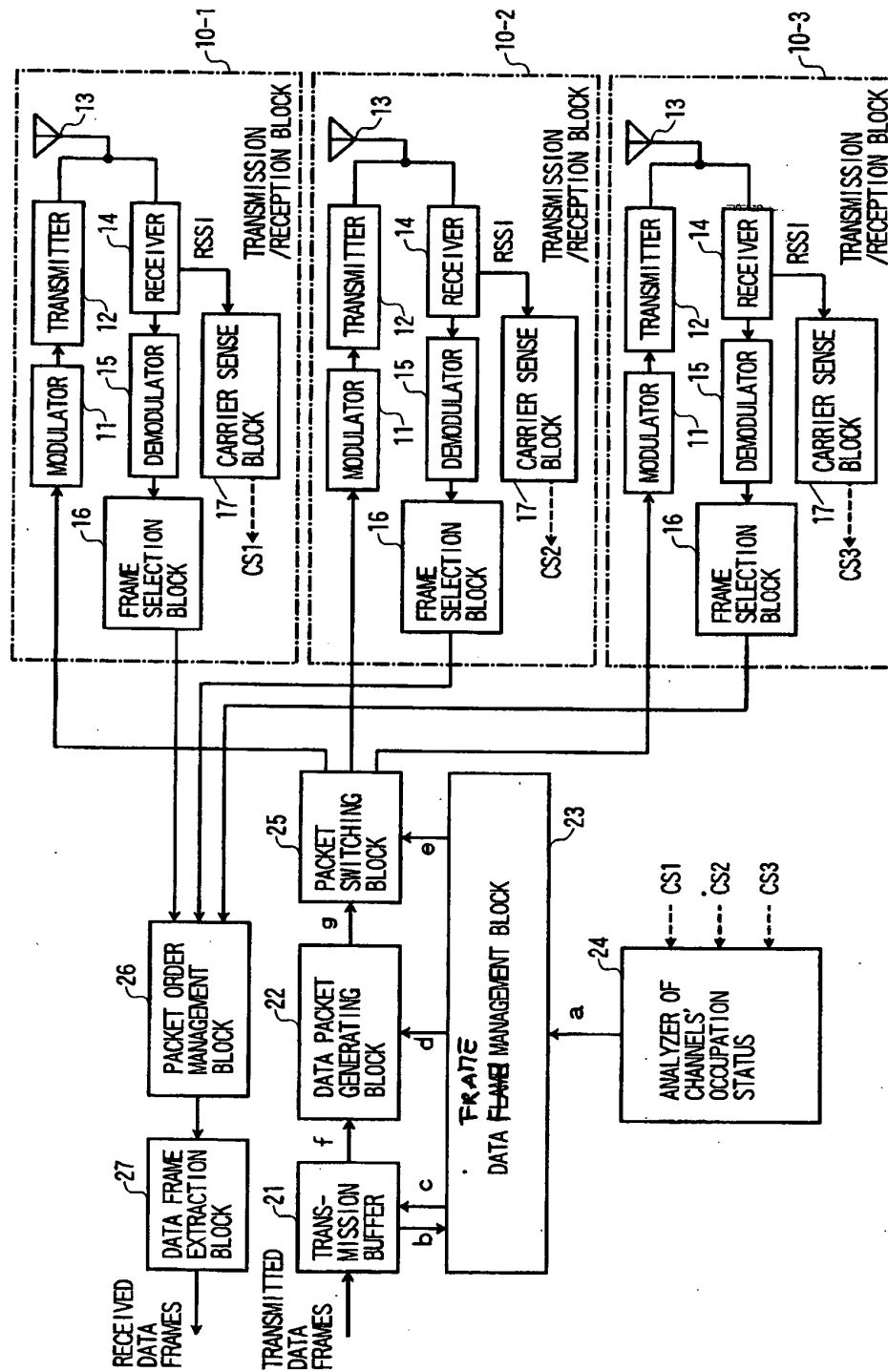


FIG. 13

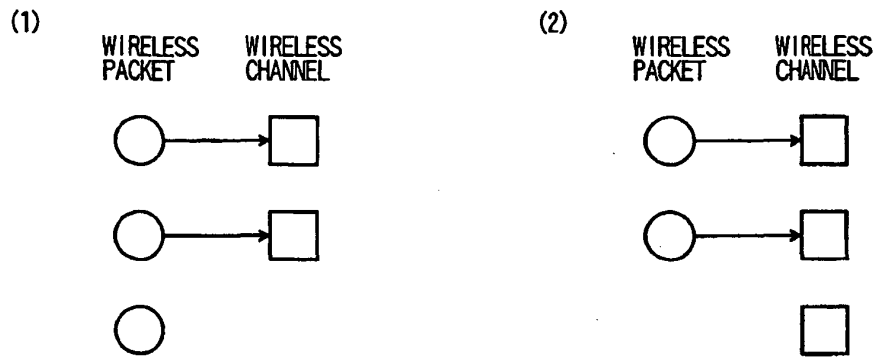


FIG. 14

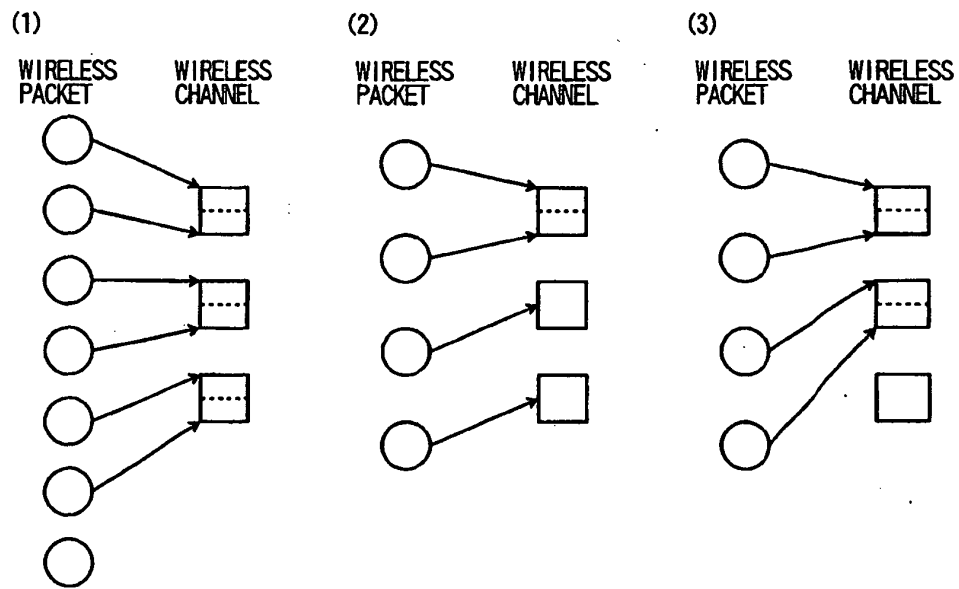


FIG. 15

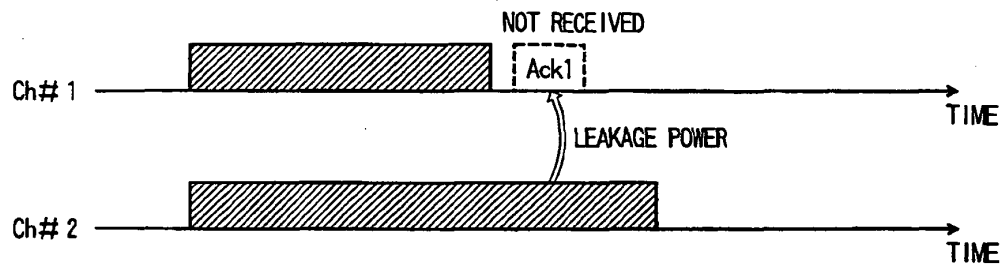


FIG. 16

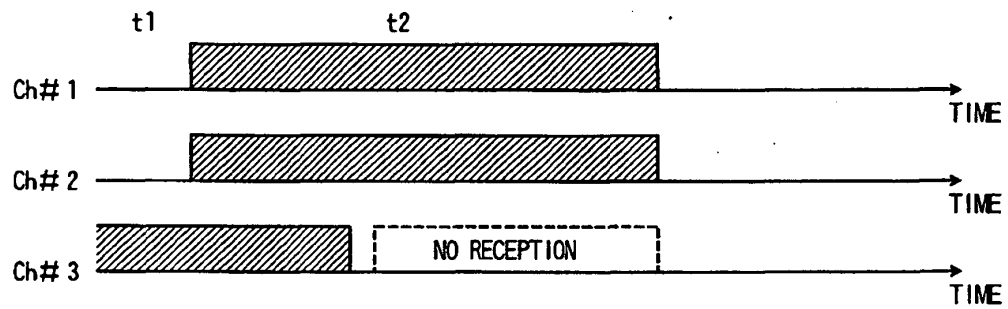
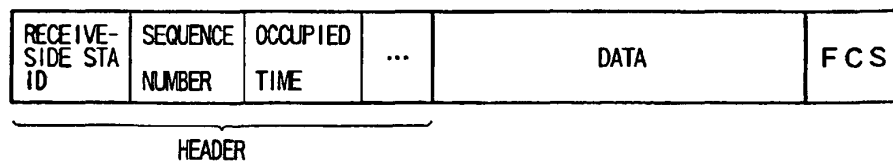


FIG. 17



REFERENCES CITED IN THE DESCRIPTION

This list of references cited by the applicant is for the reader's convenience only. It does not form part of the European patent document. Even though great care has been taken in compiling the references, errors or omissions cannot be excluded and the EPO disclaims all liability in this regard.

Patent documents cited in the description

- WO 2004114561 A1 [0014]
- EP 1263168 A2 [0015]