

Roundabout In Iowa

# GOMACO - The Worldwide Leader In Concrete Paving Technology

GOMACO Corporation manufactures curb  
and gutter machines, concrete slipform

Contact Us At:



quality management system is ISO 9001:2015 certified.

### About GOMACO Corporation

GOMACO equipment will slipform concrete streets and highways, airport runways, curb and gutter, sidewalks and recreational trails, safety barrier, bridge parapet and irrigation canals. Support equipment includes grade trimmers, concrete placers, concrete placer/spreaders and texturing and curing machines. We also offer equipment to finish flat slabs, bridges, and slopes.

GOMACO will consult on equipment for large or unique concrete paving projects. Our products are offered through a worldwide distributor network for local sales, parts and service expertise.

[Contact Us](#) (NO vendors Please)

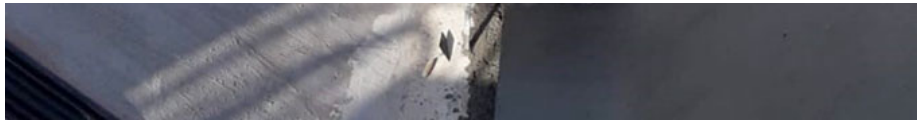
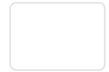
#### 24-Hour Emergency Service Assistance At 712-364-4716.

A representative from the GOMACO Service Department is on call 24 hours a day. This is for an after-hours emergency breakdown only.

Find Your Local GOMACO Distributor: [United States](#) - [Canada](#) - [International](#)

## GOMACO Snapshots - 02-15-2021





This four-track GOMACO [Commander III](#) is relining a 1.4 kilometer (.9 mi) long irrigation canal with concrete on the island of Sardinia, which is in the Mediterranean Sea near Italy.

[Follow @gomaco](#)

Follow Us On Twitter To Receive Snapshot Update Notifications

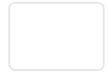
## GOMACO's YouTube Channel

Experience GOMACO product presentations and performance report videos on our ["GOMACO Corporation" YouTube channel](#).



GOMACO Xtreme Commander IIIx Thre...





## What's New At GOMACO



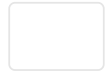
**Xtreme Commander IIIx Can Pour A 24 Inch (610 mm)  
Radius**





## GOMACO Remote Diagnostics (GRD) - It's More Than Telematics





**GP4 For 40 Foot (12.19 m) Wide Paving**







**GOMACO Diecast Models - On Sale Now**  
**GOMACO Four-Track GP4 & Xtreme Commander IIIx**

**Visit Us In Ida Grove, Iowa, USA**

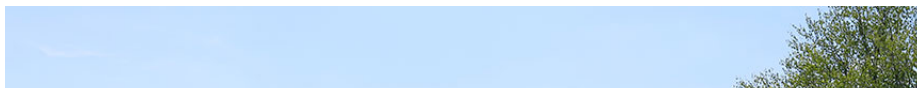


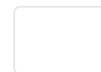


Plant #1 Manufacturing Facility & Corporate Offices



Plant #2 Manufacturing Facility





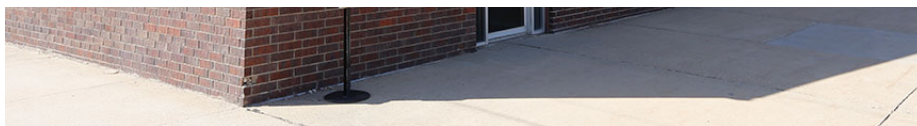
Gomaco Trolley Company



GOMACO University







GOMACO University Paving Center

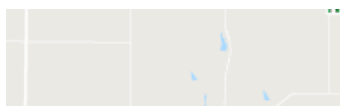


3D Training & Testing Facility





Canal Test Pier



## Maps & Motels

[Ida Grove Area Motels](#)

[Ida Grove Area Map](#)

[Western Iowa Map](#)

[Ida Grove, IA, Web Site](#)



GOMACO Corporation's Quality Management System Is ISO 9001:2015 Certified By The American Systems Registrar. Quality Policy: We Shall Meet Or Exceed Our Customers' Expectations.



© 1998-2021 GOMACO Corporation  
121 E. State Highway 175, Ida Grove, Iowa, USA  
800-831-2320 / 712-364-3347  
[Contact Us](#) (No Vendors Please)

#### About Us

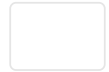
[About GOMACO](#)

[President's Message](#)

[Video Featuring GOMACO](#)

[Directions & Lodging](#)

[Contact Us](#) (No Vendors Please)



## **Career Opportunities**

[Current Job Postings](#)

## **Training**

[GOMACO University](#)

## **Product Line**

[Curb & Gutter](#)

[Slipform Pavers](#)

[Placer/Spreaders](#)

[Trimmer/Placers](#)

[Texture/Cure Machines](#)

[Finishers](#)

[Support Equipment](#)

[Airports](#)

[Canals](#)

[Road Building](#)

[Tunnel & Rail](#)

[Dams & Spillways](#)

[Stringless Technology](#)

[Diecast Models](#)

## **Distributor Locator**

[United States](#)

[Canada](#)

[International](#)

## **Resources**

[Distributors' Corner](#)

[International Literature](#)

[Industry Links](#)

[GOMACO Store](#)

[Photo Showcase](#)

[Sitemap](#)

[Godbersen Equipment Company \(GEC\)](#)

[Gomaco Trolley Company](#)

[BOBALEE Hydraulics](#)