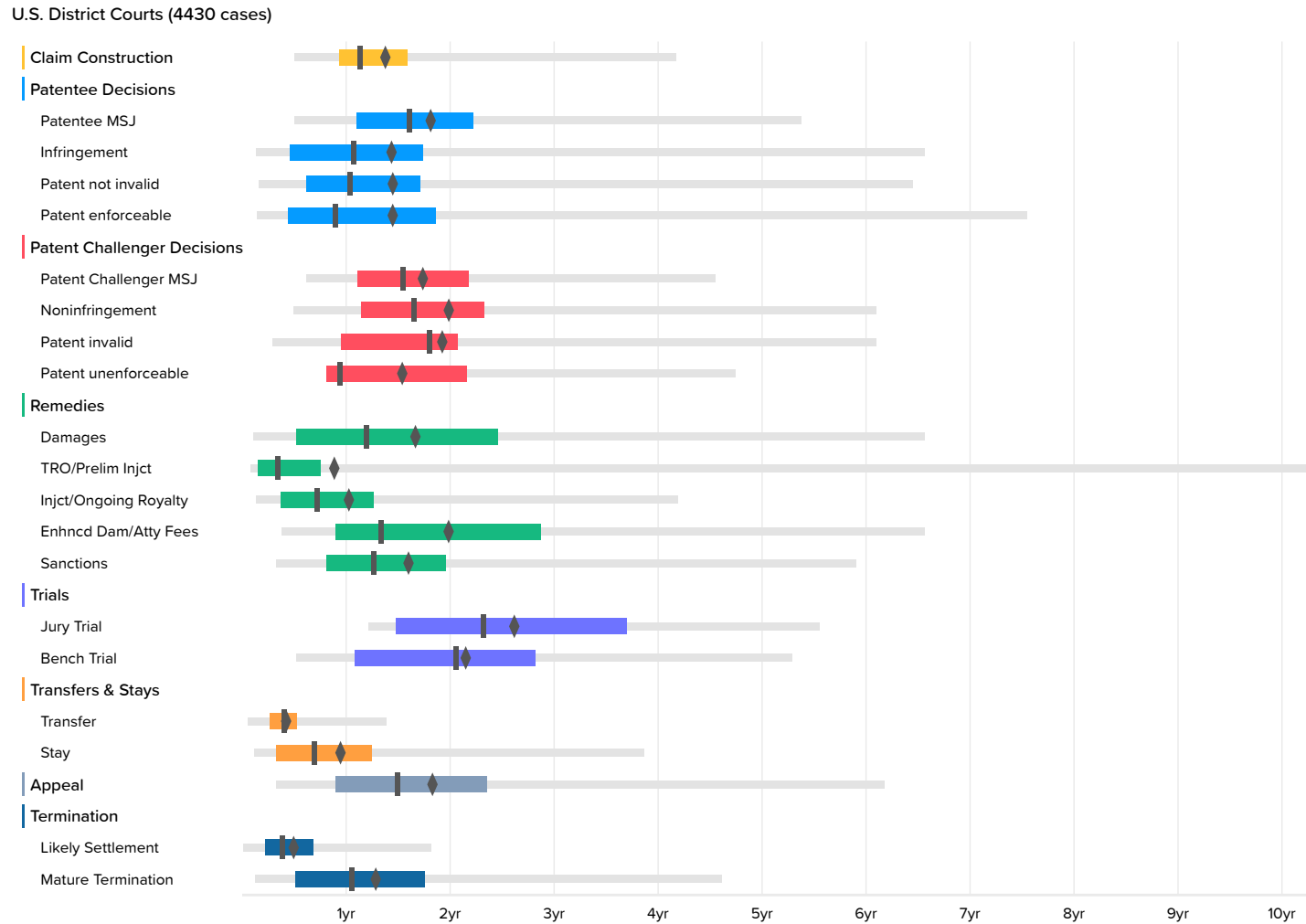
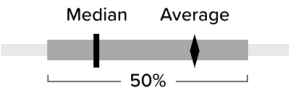


Time to Milestones

VIEW IN BROWSER



The milestones shown in this chart are based on Docket Navigator's classification of orders matching the search criteria specified to generate the report. Each box plot shows the time between the filing of the complaint and the named milestone. The left and right ends of the box labeled 50% are respectively the first- and third-quartiles. The lighter line shows events between the 2nd and 98th percentile. The remaining points are outliers, represent at most 4% of the data, and are not shown, however, the true minimum and maximum are included in the accompanying table and the mean includes outliers. Fewer than ten events occurring in a category are shown as dots instead of a box plot.



U.S. District Courts

	Occurrences	Minimum	2nd Percentile	First Quartile	Median	Third Quartile	98th Percentile	Maximum	Average
Claim Construction	399	0.1	6.0	11.2	13.5	19.1	50.0	78.7	16.8
Patentee MSJ	150	4.4	6.0	13.2	19.2	26.6	64.4	84.3	22.0
Infringement	201	1.0	1.6	5.5	12.8	20.8	78.6	104.0	17.5
Patent not invalid	309	1.0	1.9	7.4	12.4	20.5	77.2	104.0	17.6
Patent enforceable	123	1.6	1.8	5.3	10.7	22.3	90.4	104.5	17.6
Patent Challenger MSJ	286	3.7	7.4	13.3	18.5	26.0	54.5	84.3	21.1
Noninfringement	211	3.0	6.0	13.7	19.8	27.9	73.0	84.8	24.1
Patent invalid	269	2.1	3.5	11.4	21.6	24.8	73.0	104.5	23.3
Patent unenforceable	11	8.4	9.7	9.7	11.3	25.9	56.9	56.9	18.7
Damages	96	0.9	1.2	6.2	14.3	29.4	78.6	81.6	20.3
TRO/Prelim Injct	21	0.4	1.0	1.9	4.1	9.0	122.6	122.6	10.9
Injct/Ongoing Royalty	306	0.9	1.6	4.5	8.7	15.1	50.2	104.0	12.6
Enhncd Dam/Atty Fees	79	3.3	4.6	10.7	16.0	34.4	78.6	80.2	24.1
Sanctions	58	1.6	4.0	9.7	15.1	23.5	70.7	103.7	19.5
Jury Trial	33	12.8	14.5	17.6	27.7	44.3	66.5	66.5	31.6
Bench Trial	22	5.5	6.2	12.9	24.6	33.7	63.3	63.3	26.0
Transfer	130		0.7	3.2	4.8	6.3	16.6	41.2	5.4
Stay	577	0.2	1.4	4.0	8.3	15.0	46.2	87.7	11.6
Appeal	276	2.5	3.9	10.8	17.9	28.2	74.0	85.0	22.2
Likely Settlement	2748		0.1	2.7	4.7	8.2	21.8	54.1	6.2
Mature Termination	1475	0.2	1.5	6.1	12.6	21.0	55.3	142.6	15.7