

See discussions, stats, and author profiles for this publication at: <https://www.researchgate.net/publication/42639212>

Meta-Analysis of Concomitant Versus Sequential Radiochemotherapy in Locally Advanced Non-Small-Cell Lung Cancer

Article in *Journal of Clinical Oncology* · March 2010

DOI: 10.1200/JCO.2009.26.2543 · Source: PubMed

CITATIONS

1,439

READS

765

18 authors, including:



Anne Auperin

Institut de Cancérologie Gustave Roussy

270 PUBLICATIONS 15,833 CITATIONS

[SEE PROFILE](#)



Cecile Le Péchoux

Institut de Cancérologie Gustave Roussy

348 PUBLICATIONS 13,025 CITATIONS

[SEE PROFILE](#)



Walter J Curran

Emory University

1,055 PUBLICATIONS 48,708 CITATIONS

[SEE PROFILE](#)



Pierre Fournel

Centre Hospitalier Universitaire de Saint-Étienne

278 PUBLICATIONS 6,698 CITATIONS

[SEE PROFILE](#)

Some of the authors of this publication are also working on these related projects:



Radiotherapy of Brain Metastases from Lung Cancer [View project](#)



Smoking and HPV-positive oropharyngeal cancers [View project](#)

From the Unit of Biostatistics and Epidemiology and Radiation Oncology, Institut Gustave-Roussy, Villejuif; Institut de Cancérologie de la Loire, Department of Medical Oncology, Saint Etienne; Institut Universitaire de Recherche Clinique, Université Montpellier I – Statistical Unit, Montpellier; University of Paris-South, Paris, France; Bodine Center, Department of Radiation Oncology; Department of Radiation Therapy Oncology Group Statistics, American College of Radiology, Philadelphia, PA; Japan-Multinational Trial Organization, Kyoto; Cancer Biostatistics Laboratory, National Kyushu Cancer Center, Fukuoka, Japan; Netherlands Cancer Institute, Department of Radiation Oncology; Academic Medical Center, Department of Radiation Oncology, Amsterdam, the Netherlands; University of Iowa Hospital and Clinics, Department of Internal Medicine, Iowa City, IA; Gülhane Military Academy of Medicine, Radiation Oncology Department, Ankara, Turkey; Department of Biostatistics and Bioinformatics, Duke University Medical Center, Durham, NC; Medical Research Council Clinical Trials Unit, London, United Kingdom; and Karolinska Institutet, Stockholm, Sweden.

Submitted September 25, 2009; accepted December 23, 2009; published online ahead of print at www.jco.org on March 29, 2010.

Supported by unrestricted grants from French Programme Hospitalier de Recherche Clinique, Ligue Nationale Contre le Cancer, and sanofi-aventis (J.P.P.). Sanofi-aventis did not participate in the protocol preparation, data collection, data analysis, or manuscript writing.

Presented in part at the 12th World Conference on Lung Cancer, Seoul, Korea, September 2-6, 2007; the 49th Annual Meeting of the American Society of Therapeutic Radiation and Oncology, Los Angeles, CA, October 28-November 1, 2007; and the First European Lung Cancer Conference, Geneva, Switzerland, April 23-28, 2008.

Written on behalf of the Non-Small-Cell Lung Cancer Collaborative Group.

Authors' disclosures of potential conflicts of interest and author contributions are found at the end of this article.

Corresponding author: Anne Aupérin, MD, Unit of Biostatistics and Epidemiology, Institut Gustave-Roussy, 94805 Villejuif Cedex, France; e-mail: auperin@igr.fr.

© 2010 by American Society of Clinical Oncology

0732-183X/10/2813-2181/\$20.00

DOI: 10.1200/JCO.2009.26.2543

Meta-Analysis of Concomitant Versus Sequential Radiochemotherapy in Locally Advanced Non-Small-Cell Lung Cancer

Anne Aupérin, Cecile Le Péchoux, Estelle Rolland, Walter J. Curran, Kiyoyuki Furuse, Pierre Fournel, Jose Belderbos, Gerald Clamon, Hakki Cuneyt Ulutin, Rebecca Paulus, Takeharu Yamanaka, Marie-Cecile Bozonnat, Apollonia Uitterhoeve, Xiaofei Wang, Lesley Stewart, Rodrigo Arriagada, Sarah Burdett, and Jean-Pierre Pignon

A B S T R A C T

Purpose

The previous individual patient data meta-analyses of chemotherapy in locally advanced non-small-cell lung cancer (NSCLC) showed that adding sequential or concomitant chemotherapy to radiotherapy improved survival. The NSCLC Collaborative Group performed a meta-analysis of randomized trials directly comparing concomitant versus sequential radiochemotherapy.

Methods

Systematic searches for trials were undertaken, followed by central collection, checking, and reanalysis of updated individual patient data. Results from trials were combined using the stratified log-rank test to calculate pooled hazard ratios (HRs). The primary outcome was overall survival; secondary outcomes were progression-free survival, cumulative incidences of locoregional and distant progression, and acute toxicity.

Results

Of seven eligible trials, data from six trials were received (1,205 patients, 92% of all randomly assigned patients). Median follow-up was 6 years. There was a significant benefit of concomitant radiochemotherapy on overall survival (HR, 0.84; 95% CI, 0.74 to 0.95; $P = .004$), with an absolute benefit of 5.7% (from 18.1% to 23.8%) at 3 years and 4.5% at 5 years. For progression-free survival, the HR was 0.90 (95% CI, 0.79 to 1.01; $P = .07$). Concomitant treatment decreased locoregional progression (HR, 0.77; 95% CI, 0.62 to 0.95; $P = .01$); its effect was not different from that of sequential treatment on distant progression (HR, 1.04; 95% CI, 0.86 to 1.25; $P = .69$). Concomitant radiochemotherapy increased acute esophageal toxicity (grade 3-4) from 4% to 18% with a relative risk of 4.9 (95% CI, 3.1 to 7.8; $P < .001$). There was no significant difference regarding acute pulmonary toxicity.

Conclusion

Concomitant radiochemotherapy, as compared with sequential radiochemotherapy, improved survival of patients with locally advanced NSCLC, primarily because of a better locoregional control, but at the cost of manageable increased acute esophageal toxicity.

J Clin Oncol 28:2181-2190. © 2010 by American Society of Clinical Oncology

INTRODUCTION

Lung cancer remains a major cause of death worldwide with more than 1.1 million deaths per year.¹ Non-small-cell lung cancer (NSCLC) represents more than 80% of all lung tumors, and approximately 35% of patients with NSCLC present with locally advanced nonmetastatic disease. Since the mid-1990s, the standard treatment for these patients was thoracic radiotherapy and then combined radiochemotherapy. The NSCLC Collaborative Group meta-analysis² and the meta-analysis of platin-based

concomitant chemotherapy in NSCLC³ demonstrated that adding sequential or concomitant chemotherapy to radical radiotherapy improved survival in locally advanced NSCLC. The hazard ratio (HR) for survival resulting from the addition of sequential chemotherapy to radiotherapy was 0.88 (95% CI, 0.81 to 0.96).² The HR resulting from the addition of platin-based concomitant chemotherapy to radiotherapy was 0.89 (95% CI, 0.81 to 0.98), but this had to be interpreted cautiously owing to heterogeneity across trials and sensitivity analyses yielding inconsistent results.³

Several NSCLC trials have compared sequential and concomitant combinations directly; almost all of which showed a trend in favor of concomitant radiochemotherapy. The NSCLC Collaborative Group performed a systematic review and individual patient data meta-analysis of the latter trials to estimate accurately the effect on survival and acute toxicity.

METHODS

The meta-analysis was performed according to a prespecified protocol that is available on Institut de Cancérologie Gustave-Roussy web site.⁴

Selection Criteria

Trials were eligible for inclusion provided that they randomly assigned patients with unresected NSCLC without distant metastases who received thoracic radiotherapy with a curative intent either combined with sequential or with concomitant chemotherapy. Sequential chemotherapy was defined as chemotherapy given before and/or after radiotherapy. Concomitant chemotherapy was defined as chemotherapy administered during radiotherapy. Radiotherapy modalities should be similar in both arms

of the trial. Patients should not have received any prior radiotherapy or chemotherapy. Trials had to be properly randomized. The meta-analysis included trials that had completed accrual by the end of 2003 in order to have long enough follow-up.

Search Methods

Published and unpublished trials were eligible. Trials published were sought by searching electronic databases (Medline, Embase, Cancerlit) without language restriction, using the Cochrane Collaboration optimal search strategy for identifying randomized controlled trials. This was supplemented by manual searches (reference lists of trial publications, review articles, relevant books, meeting proceedings of American Society of Clinical Oncology and International Association for the Study of Lung Cancer). The National Cancer Institute Physician Data Query clinical trial registry, the United Kingdom Coordinating Committee for Cancer Research trials register, the Current Controlled Trials metaRegister of trials, and the Cochrane library were also searched to identify unpublished and ongoing trials. Experts and investigators who took part in the meta-analysis were asked to help identifying other trials. When there was uncertainty about the eligibility of a trial, this was discussed and resolved by consensus within the project secretariat and the international advisory group.

Table 1. Trial Characteristics

Trial	Accrual Period	No. of Randomly Assigned Patients	Patients Alive	Median Follow-Up (years)	Concomitant Chemoradiotherapy		Sequential Chemoradiotherapy	
					Chemotherapy	Radiotherapy	Chemotherapy	Radiotherapy
CALGB 8831 ^{14*}	1988-1989	91	7	9.2	Cb 100 mg/m ² /wk × 6 wk	Start on day 50 after induction CT: 60 Gy, 30 f, 6 wk, RT started in 80% of patients	Consolidation CT (start 3 wk after RT end): cisplatin 100 mg/m ² day 1, Vb 5 mg/m ² days 1, 15 for 4 cycles	Start on day 50 after induction CT: 60 Gy, 30 f, 6 wk, RT started in 78% of patients
WJLCG ¹⁵	1992-1994	314	41	4.9	Cisplatin 80 mg/m ² days 1, 29, Vd 3 mg/m ² days 1, 8, 29, 36, Mi 8 mg/m ² days 1, 29	Start on day 2: 28 Gy 14 f, 10 days of rest, 28 Gy, 14 f, RT started in 100% of patients	Induction CT: cisplatin 80 mg/m ² days 1, 29, Vd 3 mg/m ² days 1, 8, 29, 36, Mi 8 mg/m ² days 1, 29	Start after CT completion: 56 Gy, 28 f, RT started in 98% of patients
RTOG 9410 ¹⁶	1994-1998	407	38	6.4	Cisplatin 100 mg/m ² days 1, 29, Vb 5 mg/m ² weekly × 5 wk	Start on day 1, 60 Gy, RT started in 99% of patients	Induction CT: cisplatin 100 mg/m ² days 1, 29, Vb 5 mg/m ² weekly × 5 wk	Start on day 50: 60 Gy, RT started in 90% of patients
GMMA Ankara 1995 ¹⁷	1995-1996	30	0		Cisplatin 6 mg/m ² daily	Start on day 1: 36 Gy 12 f, 7 days of rest, 12.5 Gy 5 f, RT started in 100% of patients	Induction CT: cisplatin 40 mg/m ² , Et 200 mg/m ² , If 200 mg/m ² days 1, 3, 5, 29, 31, 33	Start 3 wk after CT completion: 36 Gy 12 f, 7 d rest, 12.5 Gy 5 f, RT started in 100% of patients
GLOT-GFPC NPC 95-01 ¹⁸	1996-2000	205	22	8.0	Cisplatin 20 mg/m ² days 1-5, 29-33, Et 50 mg/m ² days 1-5, 29-33; consolidation CT: cisplatin 80 mg/m ² days 78, 106, Vn 30 mg/m ² /wk days 78-127	Start on day 1: 66 Gy, 33 f, 6.5 wk, RT started in 94% of patients	Induction CT: cisplatin 120 mg/m ² days 1, 29, 57, Vn 30 mg/m ² /wk days 1-78	Start after CT completion: 66 Gy, 33 f, 6.5 wk, RT started 64% of patients
EORTC 08972 ²⁰	1999-2003	158	29	4.2	Cisplatin 6 mg/m ² daily	Start on day 1: 66 Gy, 24 f, 32 days, RT started in 85% of patients	Induction CT: cisplatin 75 mg/m ² days 2, 23, gemcitabine 1,250 mg/m ² days 1, 8, 22, 29	Start on day 50: 66 Gy, 24 f, 32 days, RT started in 97% of patients

Abbreviations: CALGB, Cancer and Leukemia Group B; Cb, carboplatin; wk, week; CT, chemotherapy; f, fraction; RT, radiotherapy; Vb, vinblastine; WJLCG, West Japan Lung Cancer Group; Vd, vindesine; Mi, mitomycin; RTOG, Radiotherapy Oncology Group; GMMA, Gülhane Military Medicine Academy; Et, etoposide; If, ifosfamide; GLOT-GFPC NPC, Groupe Lyon-Saint-Etienne d'Oncologie Thoracique-Groupe Français Non Petites Cellules; Vn, vinorelbine; EORTC, European Organisation for Research and Treatment of Cancer.

*Induction chemotherapy in both arms: cisplatin 100 mg/m² days 1 and 29, Vb 5 mg/m² days 1, 8, 15, 22, and 29.

Individual Patient Data

The following individual patient data were requested for all randomly assigned patients; sex, age, performance status at the time of random assignment, stage, histopathology, random assignment date, allocated treatment, and updated information on survival, local, and distant recurrence, cause of death, and acute toxicity (hematologic, esophageal, and pulmonary) graded using WHO and Radiation Therapy Oncology Group/European Organisation for Research and Treatment of Cancer criteria.^{5,6}

Data were checked for missing values and for data validity and consistency across variables, and were also compared with published results if there were any. To assess randomization integrity, we looked for unusual patterns in the sequencing of allocation or imbalances in baseline characteristics between treatment arms. Follow-up of patients was also assessed to ensure that it was well balanced between treatment arms and as updated as possible. Any queries were resolved with the responsible trial investigator or statisticians.

Statistical Analysis

The main end point was overall survival, which was evaluated from the time of random assignment until death due to any cause. Living patients were censored at the date of last follow-up. Secondary end points were acute toxicity rates (hematologic, esophageal, and pulmonary), and progression-free survival which was defined as the time from randomization until first event (local or distant progression or death from any cause). As data concerning complete response to treatment were not requested, local control rates were not studied. To estimate the respective contribution of local progression and of distant progression in the progression-free survival, the cumulative incidences of these two types of events were calculated within a competing risk framework.^{7,8}

All randomly assigned patients were included in the analyses according to the allocated treatment. Median follow-up was estimated with the use of the reverse Kaplan-Meier method.⁹

The statistical method for compiling the results and comparing the treatments of interest has been previously described.¹⁰ Analyses were stratified by trials. The log-rank observed and expected number of events and associated variances were used to calculate individual trial and overall combined HRs and their 95% CI by the fixed-effects model. χ^2 heterogeneity tests were used to test for statistical heterogeneity among trials. We also calculated the I^2 statistic expressing the proportion of variability in the results attributable to heterogeneity rather than to the sampling error¹¹ with an I^2 value below 30% considered indicative of low heterogeneity. Survival curves were estimated for both treatment groups using annual death rates and HR.¹² These were used to calculate absolute differences in the survival rates at annual intervals.

Analyses by trial characteristics were performed to study whether the difference between concomitant and sequential radiochemotherapy could vary according to the type and dose of chemotherapy, and to whether induction or consolidation chemotherapy was used. Analyses by patient characteristics were performed studying the interaction between the treatment effect and the following characteristics: sex, age, performance status, stage, and histopathology. These analyses between groups of trials or subgroups of patients were determined a priori as described in the meta-analysis protocol, except for the number of administered drugs as a subsequent publication showed an effect of this factor.¹³ All *P* values were two sided. All analyses have been performed using SAS software, version 9.1 (SAS Institute, Cary, NC).

RESULTS

Description of Trials

Eleven trials were identified,¹⁴⁻²² (two unpublished: Netherlands Cancer Institute M03IVC and Sequential or Concurrent Chemotherapy and Radiotherapy in NSCLC [SOCCAR]). Four trials were not eligible because of accrual time: three small trials^{21,22} (M03IVC), which randomized a total of 132 patients completed accrual in 2004 or 2005 and one completed accrual in 2009 (SOCCAR). The other seven trials¹⁴⁻²⁰ which randomly assigned 1,307 patients were eligible. How-

ever, as data from one trial¹⁹ were not available, the analyses were based on 1,205 patients randomly assigned in six trials (92% of all randomly assigned patients).

Table 1 presents the trial characteristics. The median follow-up was 6 years and did not differ between the two arms.

Two trials^{15,16} used the same chemotherapy regimen in both arms. In the sequential radiochemotherapy arm, induction chemotherapy was used in five trials and consolidation chemotherapy in one.¹⁴ In this trial, patients in both arms received induction chemotherapy. All sequential regimens used cisplatin combined with one other drug in four trials, or with two drugs in two trials. Vinorelbine or gemcitabine were used in two trials. In the concomitant radiochemotherapy arm, cisplatin was used in five trials, either on a daily basis as single agent (two trials) or combined with other drugs every 4 weeks (three trials). Carboplatin administered weekly was used in only one trial.¹⁴ One trial¹⁸ used consolidation chemotherapy after concomitant chemoradiotherapy.

Most trials used a two-dimensional radiotherapy technique and total dose was 60 and 66 Gy in two trials each, and 56 and 48.5 Gy in one trial each. The European Organisation for the Research and Treatment of Cancer (EORTC) trial²⁰ used a dose of 66 Gy delivered with a three-dimensional conformal technique. In one trial,¹⁵ the radiotherapy protocol was slightly different in the two arms—there was a 10 days split in the concomitant arm. In another trial,¹⁶ radiotherapy was delivered in split course in both arms. In the five trials¹⁵⁻²⁰ using induction chemotherapy in the sequential arm, patients randomly

Table 2. Patient Characteristics

Characteristic	Concomitant Arm (n = 603)		Sequential Arm (n = 602)	
	No.	%	No.	%
Male sex	457	76	464	77
Median age, years		61.0		62.4
Range		33-79		33-82
< 60	273	45	246	41
60-64	114	19	111	18
65-69	140	23	130	22
≥ 70	76	13	113	19
Unknown	0		2	
Performance status				
0	309	52	297	50
1	278	46	293	49
2	13	2	9	1
Unknown	3		3	
Histology				
Squamous carcinoma	282	47	267	44
Adenocarcinoma	198	33	197	33
Other	121	20	135	23
Unknown	2		3	
Stage				
I	3	0.5	3	0.5
II	5	0.8	7	1
IIIA	221	37	220	37
IIIB	369	61.5	366	61
IV	1	0.2	2	0.5
Unknown	4		4	

NOTE. Percentages were calculated on known values.

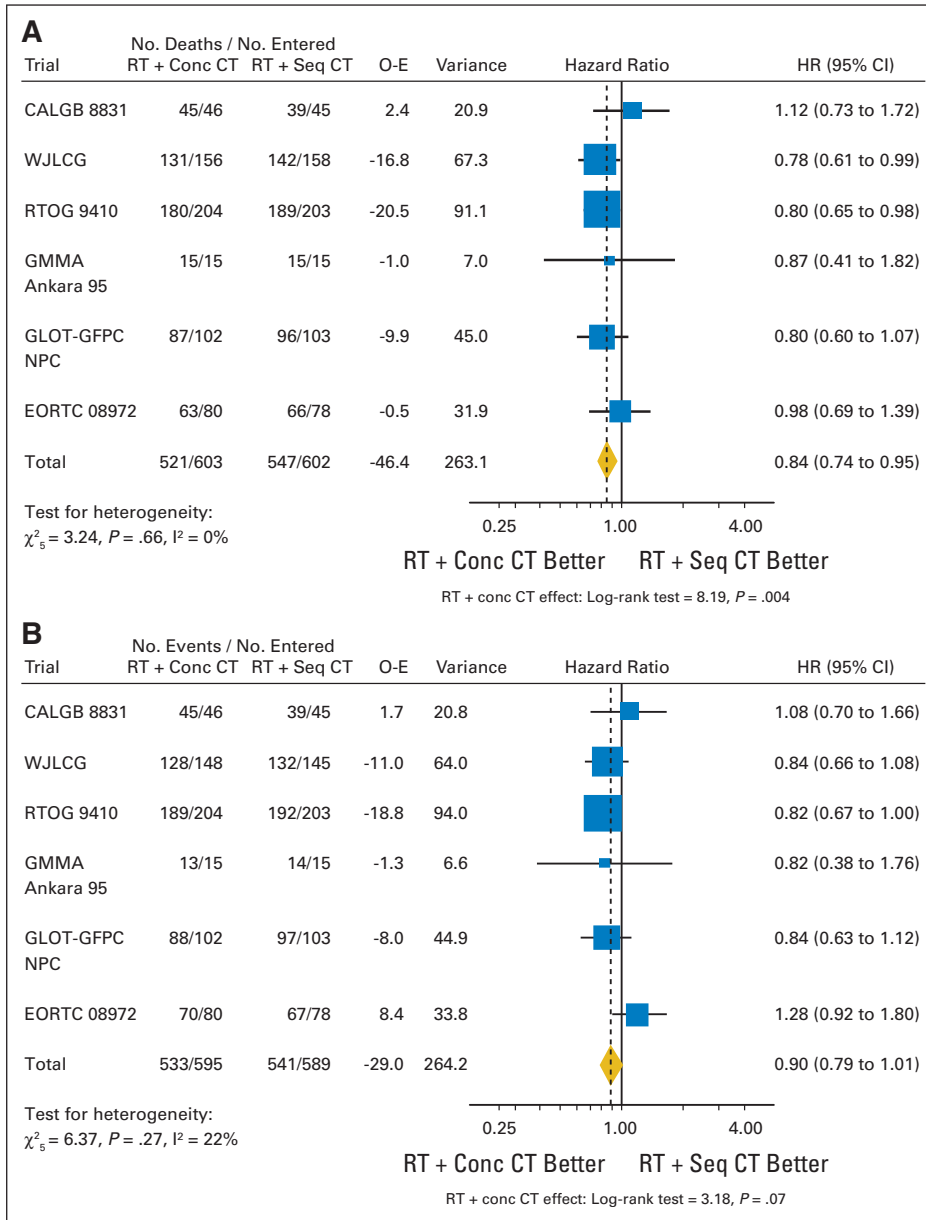


Fig 1. (A) Hazard ratio (HR) plots for survival, (B) progression-free survival, (C) local progression and (D) distant progression. The center of each square represents the HR for individual trial and each horizontal line its 95% CI; the area of the square is proportional to the amount of information from the trial. The center of the diamond represents the pooled HR and its extremities its 95% CI. RT, radiation therapy; Conc, concurrent; CT, chemotherapy; Seq, sequential; O-E, observed-expected; CALGB, Cancer and Leukemia Group B; WJLCG, West Japan Lung Cancer Group; RTOG, Radiation Therapy Oncology Group; GMMA, Gülhane Military Medicine Academy; GLOT-GFPC NPC, Groupe Lyon-Saint-Etienne d'Oncologie Thoracique-Groupe Français de Pneumo-Cancérologie NPC; EORTC, European Organisation for the Research and Treatment of Cancer.

assigned to concomitant arm received radiotherapy more frequently than those randomly assigned to the sequential arm, except in the EORTC trial.²⁰

There were no significant differences between the two treatment arms concerning patient characteristics (Table 2).

Survival

The survival analysis was based on six trials, 1,205 patients, and 1,068 deaths. There was a significant benefit of concomitant radiochemotherapy as compared with sequential radiochemotherapy (HR, 0.84; 95% CI, 0.74 to 0.95; $P = .004$; Fig 1A), with an absolute survival benefit of 5.7% at 3 years, increasing survival from 18.1% in the sequential arm to 23.8% in the concomitant arm and an absolute

benefit of 4.5% at 5 years, from 10.6% to 15.1% (Fig 2A). There was no evidence of important statistical heterogeneity with an I^2 value of 0% (χ^2 test for heterogeneity $P = .66$).

Progression-Free Survival

The progression-free survival analysis was based on six trials, 1,184 patients, and 1,074 events. The HR was 0.90 (95% CI, 0.79 to 1.01; $P = .07$; Fig 1B), with an absolute benefit of 2.9% at 3 years, increasing progression-free survival from 13.1% with sequential radiochemotherapy to 16.0% with concomitant radiochemotherapy and an absolute benefit of 2.2% at 5 years, from 9.4% to 11.6% (Fig 2B). There was no evidence of important statistical heterogeneity with an I^2 value of 22% (χ^2 test for heterogeneity $P = .27$).

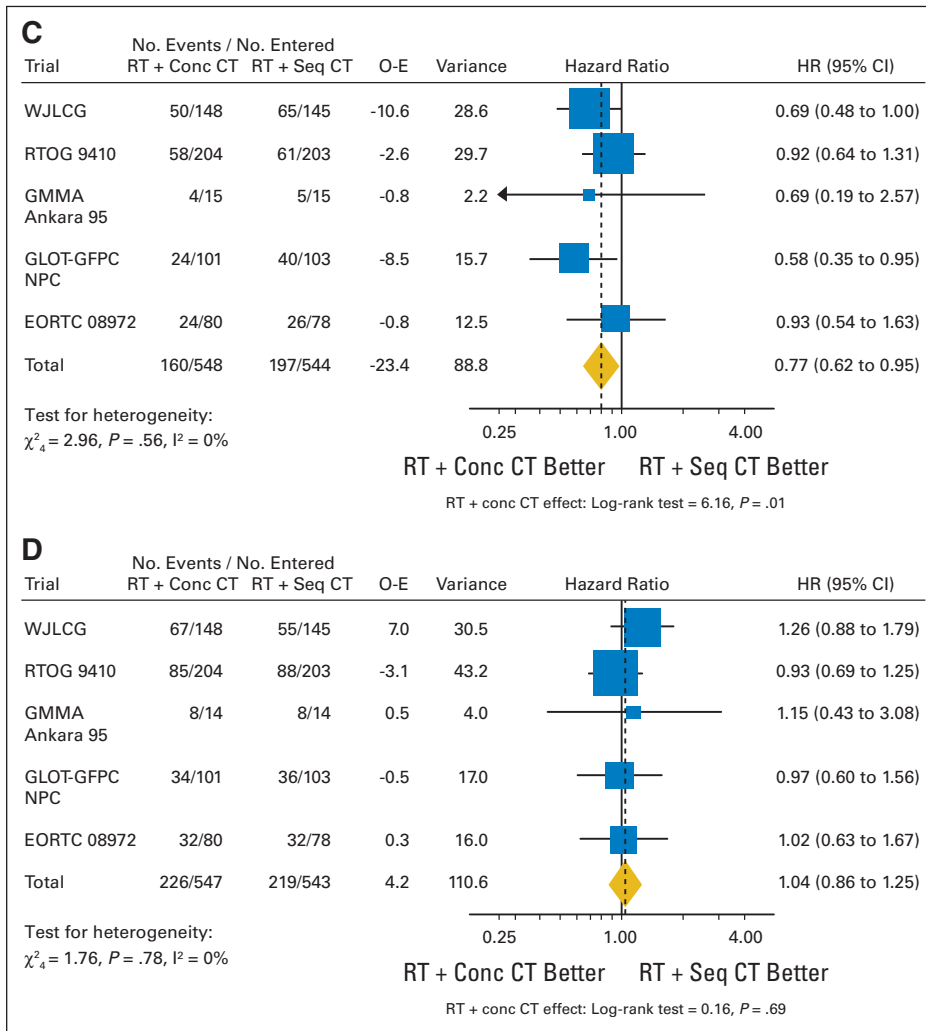


Fig 1. Continued.

Locoregional and Distant Progressions

Locoregional and distant progression analyses were based on five trials, and 1,092 and 1,090 patients, respectively. Concomitant radiochemotherapy had a significant effect on locoregional progression as shown in Figure 1C (HR, 0.77; 95% CI, 0.62 to 0.95; $P = .01$), with an absolute decrease of 6.0% at 3 years, decreasing locoregional progression rate from 34.1% with sequential radiochemotherapy to 28.1% with concomitant radiochemotherapy and an absolute decrease of 6.1% at 5 years, from 35.0% to 28.9%. There was no difference between the two treatments concerning distant progression (HR, 1.04; 95% CI, 0.86 to 1.25; $P = .69$) with 3-year rates of 39.5 and 39.1% and 5-year rates of 40.6% and 39.5% in concomitant and sequential combinations respectively (Fig 1D).

Analyses by Trial and Patient Characteristics

There was no difference in either overall survival or progression-free survival according to whether the same chemotherapy was used in both arms, or if different chemotherapies were used (Figs 3A, 3B). There was also no evidence of a difference in effect according to whether induction or consolidation chemotherapy was used in the

sequential arm. However, the number of patients with consolidation chemotherapy was very low. Concomitant polychemotherapy (doublet or triplet) appeared to improve progression-free survival more than concomitant single-agent chemotherapy (HR, 0.83 [95% CI, 0.72 to 0.95] v 1.15 [95% CI, 0.90 to 1.48] $P = .02$). However, this result was not found for overall survival nor for locoregional progression and therefore should be interpreted cautiously.

There was no clear evidence that any subgroup of patients defined by age, sex, performance status, histology, or stage benefited more or less from concomitant radiochemotherapy in terms of overall or progression-free survival (Figs 3C, 3D). Thus, the advantage of concomitant chemotherapy was observed also in patients older than 70 years.

Toxicity

Data were available for 1,077 patients (89%) for acute esophageal toxicity, 1,088 patients (90%) for acute pulmonary toxicity, and 1,098 patients (91%) for hematologic toxicity. Concomitant radiochemotherapy significantly increased acute grade 3 to 4 esophageal toxicity as compared with sequential radiochemotherapy, from 4% to 18% with

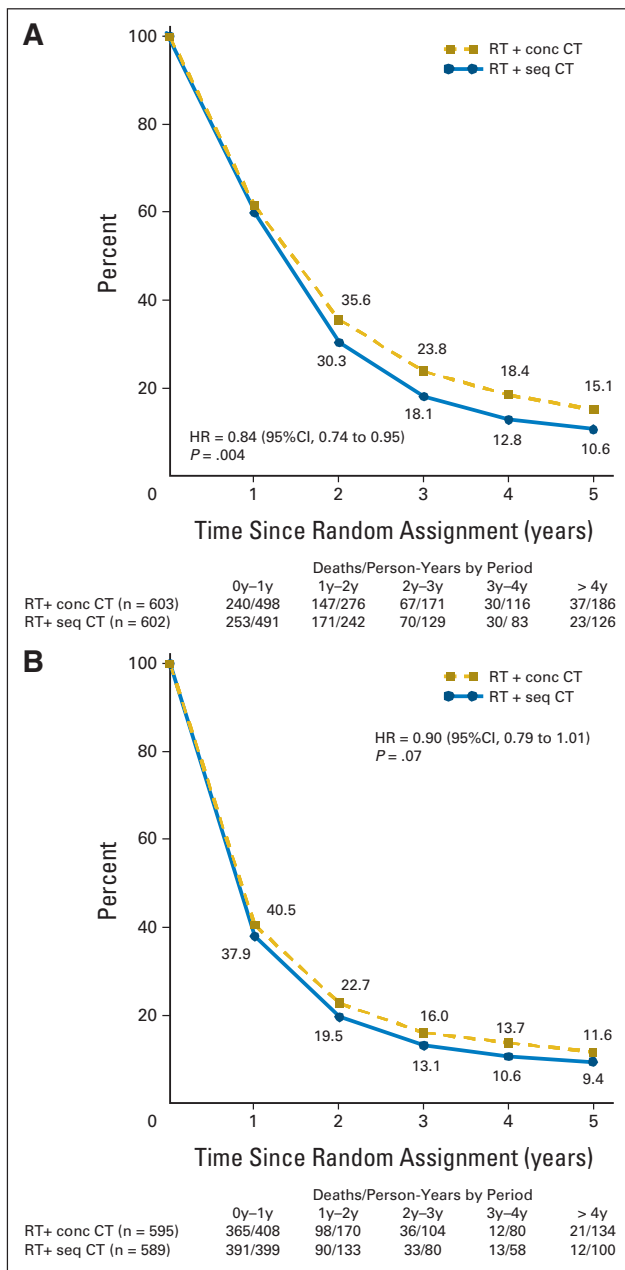


Fig 2. (A) Survival curves and (B) progression-free survival curves. The numbers of person-years and of deaths observed each year during the first 4 years and after are given. RT, radiation therapy; HR, hazard ratio; conc, concurrent; CT, chemotherapy; seq, sequential.

a relative risk of 4.9 (95% CI, 3.1 to 7.8; $P < .001$). There was no significant difference between concomitant and sequential combination for acute grade 3 to 4 pulmonary toxicity (relative risk, 0.69; 95% CI, 0.42 to 1.12; $P = .13$). The reported grade 3 to 4 hematologic toxicity rates were highly variable across trials, from fewer than 20% to more than 90%, as the type of chemotherapy and the timing of control blood counts were different among trials. Thus, it was impossible to pool the data.

We were unable to analyze esophageal and pulmonary late toxicity owing to sparse data because these data were rarely available in the trials.

DISCUSSION

This meta-analysis based on individual patient data provided by six randomized trials comparing concomitant and sequential radiochemotherapy in 1,205 patients with locally advanced NSCLC showed that concomitant combination resulted in a significant 16% relative reduction in mortality, corresponding to a 5.7% absolute benefit in overall survival at 3 years and a 4.5% absolute benefit at 5 years, and to survival rate of 18.4% at 3 years and of 15.1% at 5 years. The survival improvement is likely to be due to a decrease of locoregional failures as there was no difference between the two treatment options in distant failure rates. Similar results were found in head and neck cancers.²³ We found no difference in the effect of concomitant radiochemotherapy according to patients' characteristics or to the type of chemotherapy used. Although doublet or triplet concomitant chemotherapy regimen had significantly more impact on progression-free survival than single agents, this difference was not observed for overall survival nor locoregional failures.

These results clearly support the use of concomitant radiochemotherapy, and represent much more robust data than conclusions drawn from an indirect comparison of two previous meta-analyses, comparing sequential radiochemotherapy² and platin-based concomitant radiochemotherapy³ to radiotherapy alone. These meta-analyses showed both types of combinations to have a very similar relative benefit on survival as compared to radiotherapy alone with HRs of 0.88 and 0.89 respectively. Most trials included in the meta-analysis of concomitant radiochemotherapy versus radiotherapy alone³ used single agents, carboplatin or cisplatin, at radiosensitizing doses, whereas the current meta-analysis included several trials using full-dose platin-based concomitant chemotherapy.²⁴⁻²⁶

It is important to note that this type of treatment is generally proposed for selected, fit patients with minimal comorbidities. The percentage of patients with good performance status (WHO 0) increased from 40% in the meta-analysis of sequential radiochemotherapy to 45% in the meta-analysis of concomitant radiochemotherapy and to 50% in the current meta-analysis. Concomitant radiochemotherapy with daily low-dose cisplatin could be an option for more frail patients, as the profile for hematologic and cardiac toxicity appeared to be favorable in the EORTC trial.²⁰ Sequential radiochemotherapy may also remain a good alternative treatment.

It is commonly thought that sequential combinations would improve survival because of a decrease of distant metastases rate²⁷ whereas concomitant combinations with chemotherapy given at radiosensitizing doses would improve survival because of an increased local control rate. Thus, the decrease of locoregional failure observed with concomitant combinations in the current meta-analysis could be related to the well known radiosensitizing effect of cisplatin-based chemotherapy and the absence of difference in the distant progression could be due to the use of full-dose chemotherapy in both treatment arms.

In the trials included in this meta-analysis, the staging work-up was not up to current standards. Most of patients were not staged with positron emission tomography scan and brain magnetic resonance

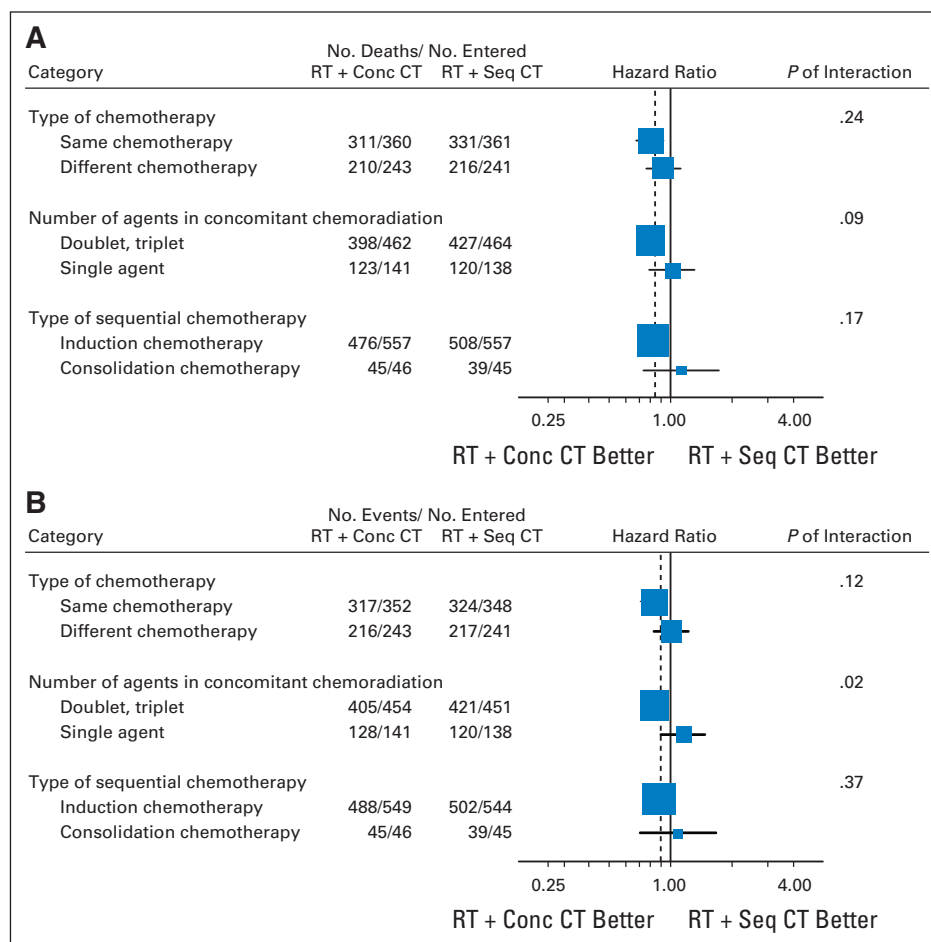


Fig 3. Hazard ratio plots according to (A) the type of chemotherapy for survival and (B) progression-free survival and according to (C) the patient characteristics for survival and (D) progression-free survival. RT, radiation therapy; Conc, concurrent; CT, chemotherapy; Seq, sequential. (*) Trend test.

imaging. In these patients the improved survival can be attributed to decreased local failures. As approximately 10% to 30% of patients with nonmetastatic NSCLC as determined by conventional imaging may be found to have distant metastases with more modern diagnostic tools,^{28,29} we can hypothesize that in the future, in better staged patients with no detected metastasis, local control may have even more impact on survival. In contrast, in case of suspected mediastinal involvement on imaging exams, pathologic confirmation was not required routinely in these trials, so that some patients may have been upstaged in these trials. In these patients, local control may have a greater impact in determining prognosis.

If we consider sequential radiochemotherapy, five^{15-18,20} of the six trials used induction chemotherapy. El Sharouni et al³⁰ showed that the interval between the end of induction chemotherapy and the start of radiotherapy may allow rapid tumor progression. This time interval was not available in the meta-analysis, but it should be emphasized that the percentage of patients who did not receive any radiation treatment after induction chemotherapy was higher than in the concomitant arm (10% v 4%), which is detrimental for tumor control.

As expected, there was an increase of acute esophageal toxicity in the concomitant as compared with the sequential combination arm. However, this rate was relatively low (lower than 20%) and clinically

manageable. There was no significant difference in terms of acute pulmonary toxicity.

Considering the survival benefit of more than 5% at 3 years, concomitant radiochemotherapy should now be the reference treatment for locally advanced NSCLC. Systematic integration of three-dimensional conformal radiotherapy in concomitant combinations will probably contribute to improve results. Elective nodal irradiation (ie, delivering radiotherapy to involved nodes but also to uninvolved elective regional lymph nodes [ipsilateral hilar, mediastinal and occasionally, supraclavicular or contralateral hilar areas]) was systematic in most of the trials included in this meta-analysis. As failure in the nodal elective areas does not exceed 10%, elective nodal irradiation is not routine clinical practice and depends on the staging examinations performed.^{31,32} Because of the use of conformal radiotherapy covering only tumor and involved nodes, esophageal toxicity has decreased considerably in recent trials.³³ The implementation of better nodal staging techniques such as functional imaging ([¹⁸F]fluorodeoxyglucose positron emission tomography) in radiotherapy treatment planning now allows us to deliver higher doses to anatomically and biologically defined target volumes, while better sparing normal tissues. Increased radiation doses administered concomitantly to chemotherapy may result in better local control and survival, and this is being explored in ongoing trials such as the randomized trial led by the

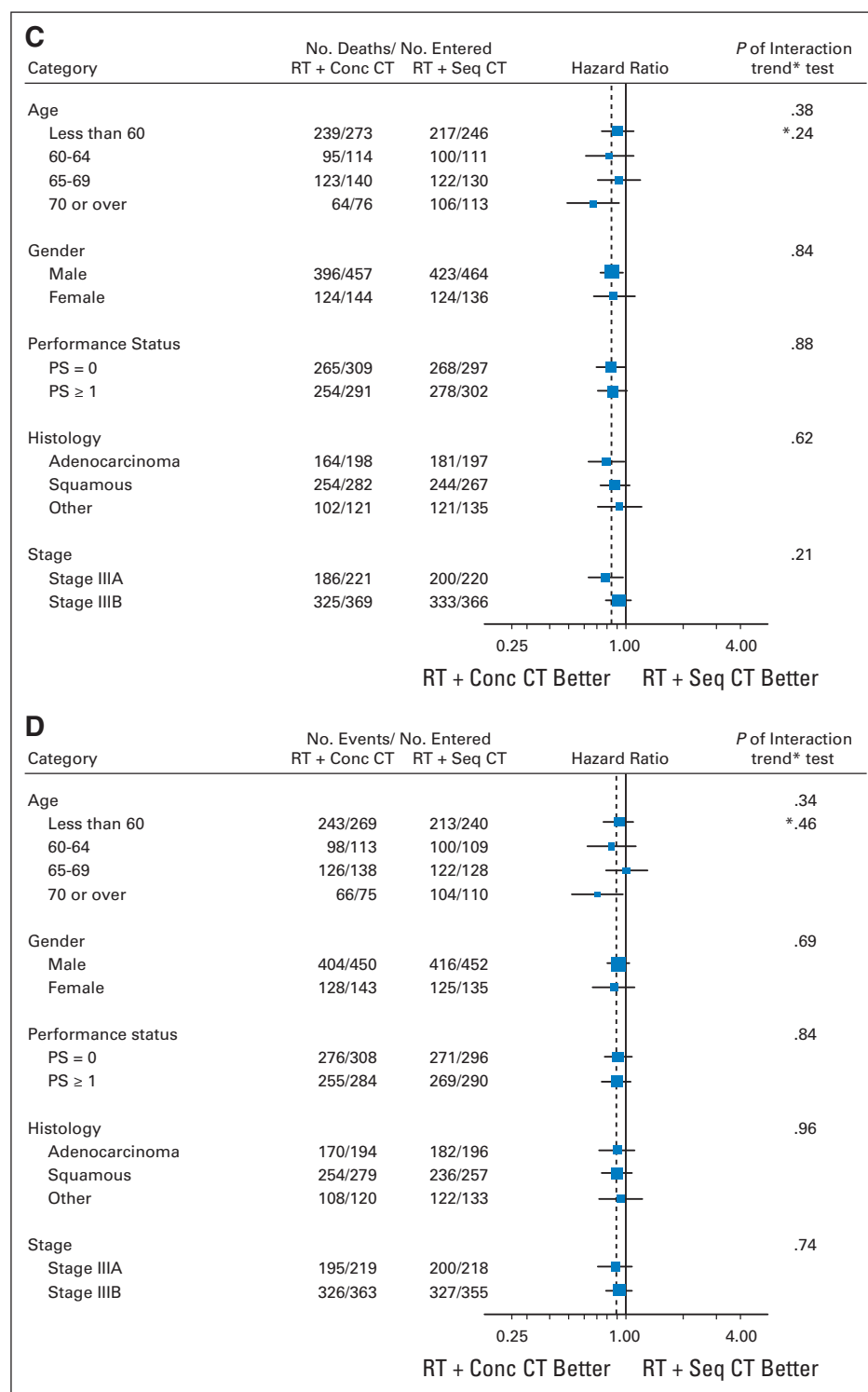


Fig 3. Continued.

Radiation Therapy Oncology Group (RTOG 0617). Despite promising results in the earlier studies, treatment intensification by adding induction or consolidation chemotherapy or targeted therapy to concomitant radiochemotherapy have not yet demonstrated any

survival benefit over concurrent radiochemotherapy alone.^{26,34-36} Identification of new cytotoxic or targeted agents that can be combined concomitantly to radiotherapy with more efficacy and less toxicity is warranted.³⁷⁻³⁹ However, intensification of both radiotherapy

and concurrent chemotherapy may result also into excessive toxicity or incomplete treatment.^{40,41} One of the future challenges is to tailor combination treatments, taking into consideration the tumor and toxicity profile, as well as functional imaging and image-guided radiotherapy.

In conclusion, concomitant radiochemotherapy, as compared with sequential radiochemotherapy, improved the overall survival of patients with locally advanced NSCLC, primarily because of decreased locoregional progression, at the cost of manageable increased acute esophageal toxicity. Concomitant radiochemotherapy should be considered as the reference treatment for future trials testing new combined treatment approaches integrating the recent developments in three-dimensional conformal radiotherapy.

AUTHORS' DISCLOSURES OF POTENTIAL CONFLICTS OF INTEREST

Although all authors completed the disclosure declaration, the following author(s) indicated a financial or other interest that is relevant to the subject matter under consideration in this article. Certain relationships marked with a "U" are those for which no compensation was received; those relationships marked with a "C" were compensated. For a detailed description of the disclosure categories, or for more information about ASCO's conflict of interest policy, please refer to the Author Disclosure Declaration and the Disclosures of Potential Conflicts of Interest section in Information for Contributors.

Employment or Leadership Position: None **Consultant or Advisory Role:** Pierre Fournel, Eli Lilly (C), Roche (C) **Stock Ownership:** None **Honoraria:** None **Research Funding:** Pierre Fournel, Merck Serono;

Jean-Pierre Pignon, sanofi-aventis **Expert Testimony:** None **Other Remuneration:** None

AUTHOR CONTRIBUTIONS

Conception and design: Anne Aupérin, Cecile Le Péchoux, Lesley Stewart, Rodrigo Arriagada, Sarah Burdett, Jean-Pierre Pignon

Financial support: Jean-Pierre Pignon

Provision of study materials or patients: Walter J. Curran, Kiyoyuki Furuse, Pierre Fournel, Jose Belderbos, Gerald Clamon, Hakki Cuneyt Ulutin, Rebecca Paulus, Takeharu Yamanaka, Marie-Cecile Bozonnat, Apollonia Uitterhoeve, Xiaofei Wang

Collection and assembly of data: Anne Aupérin, Estelle Rolland, Hakki Cuneyt Ulutin, Rebecca Paulus, Takeharu Yamanaka, Marie-Cecile Bozonnat, Xiaofei Wang, Jean-Pierre Pignon

Data analysis and interpretation: Anne Aupérin, Cecile Le Péchoux, Estelle Rolland, Walter J. Curran, Kiyoyuki Furuse, Pierre Fournel, Jose Belderbos, Gerald Clamon, Hakki Cuneyt Ulutin, Rebecca Paulus, Takeharu Yamanaka, Marie-Cecile Bozonnat, Apollonia Uitterhoeve, Xiaofei Wang, Lesley Stewart, Rodrigo Arriagada, Sarah Burdett, Jean-Pierre Pignon

Manuscript writing: Anne Aupérin, Cecile Le Péchoux, Jose Belderbos, Apollonia Uitterhoeve, Lesley Stewart, Rodrigo Arriagada, Jean-Pierre Pignon

Final approval of manuscript: Anne Aupérin, Cecile Le Péchoux, Estelle Rolland, Walter J. Curran, Kiyoyuki Furuse, Pierre Fournel, Jose Belderbos, Gerald Clamon, Hakki Cuneyt Ulutin, Rebecca Paulus, Takeharu Yamanaka, Marie-Cecile Bozonnat, Apollonia Uitterhoeve, Xiaofei Wang, Lesley Stewart, Rodrigo Arriagada, Sarah Burdett, Jean-Pierre Pignon

REFERENCES

1. Ferlay J, Bray F, Pisani P, et al: GLOBOCAN 2002: Cancer Incidence, Mortality and Prevalence Worldwide, Version 2.0: IARC CancerBase N°5. Lyon, France, IARC Press, 2004
2. Non-small Cell Lung Cancer Collaborative Group: Chemotherapy in non-small cell lung cancer: A meta-analysis using updated data on individual patients from 52 randomised clinical trials. *BMJ* 311:899-909, 1995
3. Auperin A, Le Pechoux C, Pignon JP, et al: On behalf of the Meta-Analysis of Cisplatin/carboplatin based Concomitant Chemotherapy in non-small cell Lung Cancer (MAC3-LC) Group: Concomitant radiochemotherapy based on platin compounds in patients with locally advanced non-small cell lung cancer (NSCLC): A meta-analysis of individual data from 1764 patients. *Ann Oncol* 17:473-483, 2006
4. Institut de Cancérologie Gustave-Roussy. http://www.igr.fr/index.php?p_id=1349
5. World Health Organization: WHO Handbook for Reporting Results of Cancer Treatment. Geneva, Switzerland, WHO offset publication no. 48, 1979
6. Cox JD, Stetz J, Pajak TF: Toxicity criteria of the Radiation Therapy Oncology Group (RTOG) and the European Organisation for Research and Treatment of Cancer (EORTC). *Int J Radiat Oncol Biol Phys* 31:1341-1346, 1995
7. Gray RJ: A class of K-sample tests for comparing the cumulative incidence of a competing risk. *Ann Stat* 16:1141-1154, 1988
8. Koscielny S, Thames HD: Biased methods for estimating local and distant failure rates in breast carcinoma and a "commonsense" approach. *Cancer* 92:2220-2227, 2001
9. Schemper M, Smith TL: A note on quantifying follow-up in studies of failure time. *Control Clin Trials* 17:343-346, 1996
10. Early Breast Cancer Trialists' Collaborative Group: Treatment of Early Breast Cancer, Volume 1: Worldwide Evidence 1985-1990—A Systematic Overview of All Available Randomised Trials of Adjuvant Endocrine and Cytotoxic Therapy. Oxford, United Kingdom, Oxford University Press, 1990
11. Higgins JPT, Thompson SG: Quantifying heterogeneity in a meta-analysis. *Stat Med* 21:1539-1558, 2002
12. Early Breast Cancer Trialists' Collaborative Group: Systemic treatment of early breast cancer by hormonal, cytotoxic or immune therapy: 133 randomised trials involving 31,000 recurrences and 24,000 deaths among 75,000 women. *Lancet* 339: 1-15, 1992
13. Delbaldo C, Michiels S, Syz N, et al: Benefits of adding a drug to a single-agent or a 2-agent chemotherapy regimen in advanced non-small-cell lung cancer: A meta-analysis. *JAMA* 292:470-484, 2004
14. Clamon G, Herndon J, Eaton W, et al: A feasibility study of extended chemotherapy for locally advanced non-small cell lung cancer: A phase II trial of Cancer and Leukemia Group B. *Can Inv* 12:273-282, 1994
15. Furuse K, Fukuoka M, Kawahara M, et al: Phase III study of concurrent versus sequential thoracic radiotherapy in combination with mitomycin, vindesine, and cisplatin in unresectable stage III non-small cell lung cancer. *J Clin Oncol* 17:2692-2699, 1999
16. Curran WJ, Scott CB, Langer CJ, et al: Long-term benefit is observed in a phase III comparison of sequential versus concurrent chemo-radiation for patients with unresected stage III NSCLC: RTOG 9410. *Proc Am Soc Clin Oncol* 22:621, 2003 (suppl; abstr 2499)
17. Ulutin HC, Güden M, Oysul K, et al: Split-course radiotherapy with or without concurrent or sequential chemotherapy in non-small cell lung cancer. *Radiat Med* 18:93-96, 2000
18. Fournel P, Robinet G, Thomas P, et al: Randomized phase III trial of sequential chemoradiotherapy compared with concurrent chemoradiotherapy in locally advanced non-small-cell lung cancer: Groupe Lyon-Saint-Etienne d'Oncologie Thoracique-Groupe Français de Pneumo-Cancérologie NPC 95-01 study. *J Clin Oncol* 23:5910-5917, 2005
19. Zatloukal P, Petruzelka L, Zemanova M, et al: Concurrent versus sequential radiochemotherapy with cisplatin and vinorelbine in locally advanced non-small cell lung cancer. a randomized study. *Lung Cancer* 46:87-98, 2004
20. Belderbos J, Uitterhoeve L, van Zandwijk N, et al: On behalf of the EORTC LCG and RT Group: Randomised trial of sequential versus concurrent chemo-radiotherapy in patients with inoperable non-small cell lung cancer (EORTC 08972-22973). *Eur J Cancer* 43:114-121, 2007
21. Garrido P, Rosell R, Arellano A, et al: Induction or consolidation chemotherapy with docetaxel and gemcitabine plus concomitant chemoradiotherapy with docetaxel and carboplatin for unresectable stage III non-small cell lung cancer patients: Initial report of the randomized phase II trial SLCG 0008. *Lung Cancer* 49:S78, 2005 (suppl 2; abstr PD-042)
22. Cardenal F, Arnaiz M, Valencia J, et al: Randomized phase II study of sequential versus concurrent chemoradiotherapy in poor risk patients with inoperable stage III non-small cell lung cancer:

Interim analysis. *Lung Cancer* 49:S304, 2005 (suppl 2; abstr P-706)

23. Pignon JP, le Maître A, Maillard E, et al: Meta-analysis of chemotherapy in head and neck cancer (MACH-NC): An update on 93 randomised trials and 17,346 patients. *Radiother Oncol* 92:4-14, 2009
24. Gandara DR, Chansky K, Albain KS, et al: Consolidation docetaxel after concurrent chemoradiotherapy in stage IIIB non-small cell lung cancer: Phase II Southwest Oncology Group Study S9504. *J Clin Oncol* 21:2004-2010, 2003
25. Albain KS, Crowley JJ, Turrisi AT, et al: Concurrent cisplatin, etoposide and chest radiotherapy in pathologic stage IIIB non-small-cell lung cancer: A Southwest Oncology Group phase II study, SWOG 9019. *J Clin Oncol* 20:3454-3460, 2002
26. Kelly K, Chansky K, Gaspar LE, et al: Phase III trial of maintenance gefitinib or placebo after concurrent chemoradiotherapy and docetaxel combination in inoperable stage III non-small-cell lung cancer. *J Clin Oncol* 26:2450-2456, 2008
27. Le Chevalier T, Arriagada R, Quoix E, et al: Radiotherapy alone versus combined chemotherapy and radiotherapy in nonresectable non-small-cell lung cancer: First analysis of a randomized trial in 353 patients. *J Natl Cancer Inst* 83:417-423, 1991
28. Mac Manus MP, Hicks RJ, Matthews JP, et al: High rate of detection of unsuspected distant metastases by PET in apparent stage III non-small-cell lung cancer: Implications for radical radiation therapy. *Int J Radiat Oncol Biol Phys* 50:287-293, 2001
29. Pfister DG, Johnson DH, Azzoli CG, et al: American Society of Clinical Oncology treatment of unresectable non-small-cell lung cancer guideline: Update 2003. *J Clin Oncol* 22:330-353, 2004
30. El Sharouni SY, Kal HB, Battermann JJ: Accelerated regrowth of non-small-cell lung tumours after induction chemotherapy. *Br J Cancer* 89:2184-2189, 2003
31. Senan S, De Ruyscher D, Giraud P, et al: Radiotherapy Group of European Organization for Research and Treatment of Cancer: Literature-based recommendations for treatment planning and execution in high-dose radiotherapy for lung cancer. *Radiother Oncol* 71:139-146, 2004
32. Belderbos JS, Kepka L, Kong FM, et al: Report from the International Atomic Energy Agency (IAEA) consultants' meeting on elective nodal irradiation in lung cancer: Non-small-Cell lung cancer (NSCLC). *Int J Radiat Oncol Biol Phys* 72:335-342, 2008
33. Zinner RG, Komaki R, Cox JD, et al: Dose escalation of gemcitabine is possible with concurrent chest three-dimensional rather than two-dimensional radiotherapy: A phase I trial in patients with stage III non-small-cell lung cancer. *Int J Radiat Oncol Biol Phys* 73:119-127, 2009
34. Vokes EE, Herndon JE II, Kelley MJ, et al: Induction chemotherapy followed by chemoradiotherapy compared with chemoradiotherapy alone for regionally advanced unresectable stage IIIB non-small-cell lung cancer: Cancer and Leukemia Group B. *J Clin Oncol* 25:1698-1704, 2007
35. Jeremic B, Koning C: Induction chemotherapy before chemoradiation in locally advanced non-small-cell lung cancer: Failure after failure, again and again. *J Clin Oncol* 26:e1-2, 2008
36. Hanna N, Neubauer M, Yiannoutsos C, et al: Phase III trial of cisplatin, etoposide, and concurrent chest radiation with or without consolidation docetaxel in patients with inoperable stage III non-small-cell lung cancer: The Hoosier Oncology Group and U.S. Oncology. *J Clin Oncol* 26:5755-5760, 2008
37. Blumenschein GR Jr, Paulus R, Curran WJ, et al: A phase II study of cetuximab (C225) in combination with chemoradiation in patients with stage IIIA/B non-small cell lung cancer: A report of the 2 year and median survival for the RTOG 0324 trial. *J Clin Oncol* 26:401, 2008 (suppl; abstr 7516)
38. Hughes S, Liong J, Miah A, et al: A brief report on the safety study of induction chemotherapy followed by synchronous radiotherapy and cetuximab in stage III non-small cell lung cancer: SCRATCH study. *J Thorac Oncol* 3:648-651, 2008
39. Seiwert TY, Connell PP, Mauer AM, et al: A phase I study of pemetrexed, carboplatin, and concurrent radiotherapy in patients with locally advanced or metastatic non-small cell lung or esophageal cancer. *Clin Cancer Res* 13:515-522, 2007
40. Stinchcombe TE, Morris DE, Lee CB, et al: Induction chemotherapy with carboplatin, irinotecan, and paclitaxel followed by high dose three-dimension conformal thoracic radiotherapy (74 Gy) with concurrent carboplatin, paclitaxel, and gefitinib in unresectable stage IIIA and stage IIIB non-small cell lung cancer. *J Thorac Oncol* 3:250-257, 2008
41. Machtay M, Hsu C, Komaki R, et al: Effect of overall treatment time on outcomes after concurrent chemoradiation for locally advanced non-small-cell lung carcinoma: Analysis of the Radiation Therapy Oncology Group experience. *Int J Radiat Oncol Biol Phys* 63:667-671, 2005

Simplify Your Search With JCO Subject Collections

Subject Collections are topic-specific archives of articles published on JCO.org that make it easy for you to find the research you need. Instead of random, time-consuming keyword searches, JCO Subject Collections allow you to quickly browse your interest areas for articles on specific diseases and treatments. Best of all, by signing up for Collection Alerts, you'll receive e-mail notification whenever JCO publishes an article in your interest area.

Sign up today at www.jco.org/collections.

