



PCB Spring Contacts

AUGUST 5, 2023

Table of Contents



- 1. Introduction
- 2. What are PCB Spring Contacts?
- 3. PCB Spring Contacts Working
- 4. Types of PCB Spring Contacts
 - 4.1. Pogo Pins
 - 4.2. Cantilever Spring Contacts
 - 4.3. Coil Spring Contacts
 - 4.4. C-Style Contacts
 - 4.5. Double-ended Spring Contacts
 - 4.6. Pancake Spring Contacts
 - 4.7. Swivel Spring Contacts
 - 4.8. Vertical Spring Contacts
 - 4.9. Hybrid Spring Contacts
- 5. Electrical Rating of PCB Spring Contacts
 - 5.1. Contact Resistance
 - 5.2. Contact Current Rating
- 6. Benefits of PCB Spring Contacts
 - 6.1. Reliability
 - 6.2. Low Contact Resistance
 - 6.3. Durability
 - 6.4. Space-Efficiency
 - 6.5. Versatility
- 7. Applications of PCB Spring Contacts
 - 7.1. Aerospace and Defense
 - 7.2. Data Storage



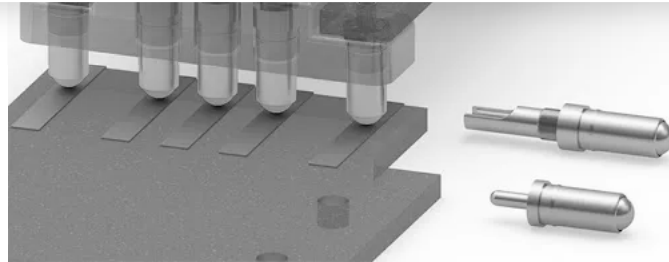
- 7.10. Instrumentation and Test Equipment
- 8. Future Trends in PCB Spring Contacts
 - 8.1. High-Density Applications
 - 8.2. High-Speed Data Transmission
 - 8.3. Integration of Smart Technologies
 - 8.4. Material Advancements
 - 8.5. Wireless Charging Integration
 - 8.6. Increased Current Handling Capacity
 - 8.7. Flexible and Stretchable Spring Contacts
 - 8.8. Environmentally-Friendly Solutions
- 9. Conclusion

Introduction

Printed Circuit Boards (PCBs) are the backbone of modern electronics, serving as the foundation for interconnecting various electronic components to create complex systems. To ensure reliable electrical connections, one crucial element within PCB designs is the use of spring contacts. These tiny yet powerful components play a significant role in establishing secure and stable connections between electronic devices.

What Are PCB Spring Contacts?

PCB spring contacts, also known as spring-loaded contacts, are small mechanical components used to establish temporary or permanent electrical connections between a PCB and other electronic devices or systems. These contacts consist of a spring mechanism encapsulated in a housing, designed to exert constant pressure on mating surfaces. The pressure generated by the spring helps to ensure a continuous, reliable, and low-resistance electrical connection between the components.



PCB Spring Contacts

PCB Spring Contacts Working

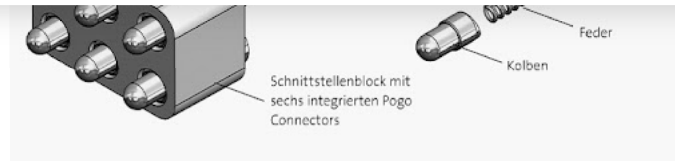
The principle behind PCB spring contacts is relatively simple. When two mating surfaces come into contact, the spring within the housing is compressed. This compression creates a force that ensures a reliable electrical connection between the PCB and the mating component. As the mating components are separated, the spring pushes them apart, maintaining a constant force against the contact surfaces. This “spring action” enables the contact to compensate for slight variations in the mating components’ positions, ensuring a secure connection even in the presence of mechanical tolerances or vibrations.

Types Of PCB Spring Contacts

PCB spring contacts come in a variety of types, each designed to address specific application requirements. These different types offer engineers the flexibility to choose the most suitable solution based on factors such as space constraints, mating cycles, current-carrying capacity, and environmental conditions. Here are some common types of PCB spring contact.

Pogo Pins

Pogo pins are perhaps the most well-known type of PCB spring contacts. They consist of a plunger with a spring inside a tube-shaped housing. The plunger extends out when pressed and retracts when released, providing a spring-loaded connection. Pogo pins are widely used for board-to-board connections, programming interfaces, and test points in electronic devices.



Pogo Connector

Cantilever Spring Contacts

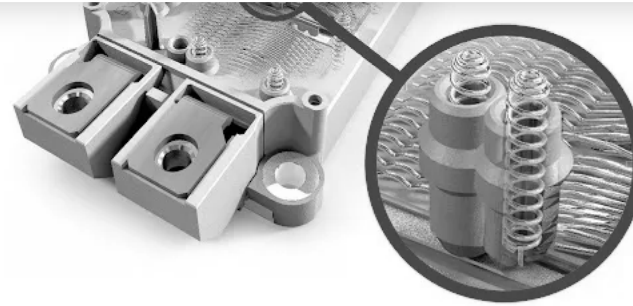
Cantilever spring contacts are designed with a single, flexible beam that acts as a spring to exert force on the mating surface. They are commonly used in applications with limited space, such as SIM card holders, battery contacts, and compact connectors.



Cantilever PCB Spring Contact

Coil Spring Contacts

Coil spring contacts, also known as compression springs, are made of wire wound into a cylindrical shape. These contacts provide more robust force and are suitable for applications that require higher mating forces, like battery compartments in heavy-duty devices and ruggedized electronic equipment.



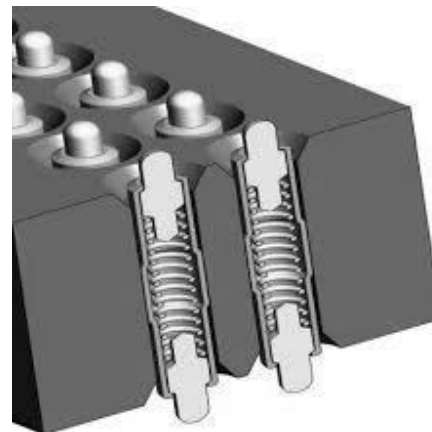
Spring Contact in IGBT Module

C-Style Contacts

C-style spring contacts are named after their distinctive shape, resembling the letter "C." They provide excellent contact stability and are often used in high-vibration environments, such as automotive electronics and industrial equipment.

Double-ended Spring Contacts

As the name suggests, double-ended spring contacts have spring-loaded pins on both ends, allowing them to establish connections in two different locations simultaneously. They are used in applications that require redundancy or multi-point connections, such as high-reliability data transfer systems.





Pancake spring contacts are characterized by their flat, low-profile design. They are commonly used in miniature electronic devices like wearables and hearing aids, where space is a critical factor.

Swivel Spring Contacts

Swivel spring contacts have a unique swiveling action that enables them to align and establish contact with mating surfaces even when there are slight misalignments. They are ideal for applications that involve challenging mating conditions, such as docking connectors.

Vertical Spring Contacts

Vertical spring contacts have a spring-loaded plunger that moves vertically. They are often used in applications where the mating connector is mounted perpendicularly to the PCB, providing a convenient and reliable connection.

Hybrid Spring Contacts

Hybrid spring contacts combine different contact technologies, such as combining a pogo pin with a cantilever beam. This hybridization allows for unique solutions that meet specific application needs.

Choosing the right type of PCB spring contact is crucial to ensure a reliable electrical connection and optimize the performance of the electronic device. Engineers must carefully consider factors like contact force, mating cycles, current-carrying capacity, and the environment in which the device will operate. By selecting the appropriate type of spring contact, engineers can design robust electronic systems that meet the demands of various industries and applications.

Electrical Rating Of PCB Spring Contacts

When designing electronic devices and systems, understanding the electrical rating of PCB spring contacts is crucial to ensure efficient power delivery and reliable performance. Two essential parameters to consider in this context are contact resistance and contact current rating.

Contact Resistance

Contact resistance refers to the electrical resistance encountered at the interface of the mating surfaces when the spring contact establishes a connection. It is imperative to minimize contact resistance as it directly affects the efficiency of power transmission and signal integrity. Low contact resistance helps reduce power losses and prevents the generation of excessive heat at contact points.

Typically, high-quality PCB spring contact are engineered to provide low contact resistance values. Gold-plated contacts are popular in applications requiring superior electrical conductivity and corrosion resistance. The gold plating enhances the surface properties, ensuring a stable and low-resistance connection over the lifetime of the device. When selecting PCB spring contact, engineers should pay careful attention to the contact resistance specifications to guarantee optimal electrical performance.



The contact current rating is determined by several factors, including the cross-sectional area of the contact material, the design of the spring mechanism, and the overall size and geometry of the spring contact. Manufacturers provide clear specifications for the maximum current that each type of PCB spring contact can safely handle. Engineers must carefully consider the anticipated current requirements of their application and select spring contacts with suitable contact current ratings to ensure safe and reliable operation.

Benefits Of PCB Spring Contacts

Reliability

PCB spring contacts offer a high level of reliability in establishing electrical connections. Their self-adjusting nature helps compensate for any minor misalignments or deformations, reducing the risk of connection failure.

Low Contact Resistance

The constant pressure exerted by the spring ensures low electrical resistance between the mating surfaces, which is critical for maintaining signal integrity and reducing power losses.

Durability

These spring contacts are designed to withstand a high number of mating cycles without a significant reduction in performance, making them ideal for applications where frequent connections and disconnections are expected.

Space-Efficiency

PCB spring contacts come in various compact form factors, making them suitable for applications with limited space, such as miniature electronic devices.

Versatility

They are available in different styles and materials to suit various application requirements, including gold-plated contacts for superior conductivity and corrosion resistance.

Applications Of PCB Spring Contacts

PCB spring contacts find widespread use in a diverse range of industries, owing to their versatility, reliability, and ability to facilitate secure electrical connections. These spring-loaded contacts play a critical role in ensuring smooth operations and optimal performance in various electronic devices and systems. Some of the applications include:



critical applications in aircraft, satellites, and military hardware.

Data Storage

PCB spring contacts are essential components in data storage devices such as hard disk drives (HDDs) and solid-state drives (SSDs). They serve as connectors for data and power transmission between the storage media and the PCB. The high mating cycle capability of spring contacts ensures longevity and durability in these storage systems.

Robotics and Automation

In robotics and automated systems, PCB spring contact are commonly found in robotic arms, motion controllers, and sensors. These contacts provide reliable connections for seamless data transfer and control signals, enabling precise and efficient operation in industrial automation and robotic applications.

Renewable Energy

PCB spring contacts play a vital role in renewable energy systems, including solar panels and wind turbines. They are used in solar inverters, charge controllers, and battery management systems to establish secure connections and efficient power distribution. The contacts' ability to handle high currents and repetitive mating cycles ensures long-lasting and trouble-free operation in renewable energy applications.

Transportation

The transportation industry heavily relies on PCB spring contacts for various applications. They are used in automotive electronics for connections in engine control modules, infotainment systems, and electronic control units. In rail transportation, spring contacts are employed in signaling systems and train control systems for reliable data transmission.

IoT Devices

As the Internet of Things (IoT) continues to grow, PCB spring contact become essential components in IoT devices and sensors. They are used in smart home devices, wearable technology, and IoT-enabled industrial equipment to establish reliable connections and ensure seamless communication between interconnected devices.

Healthcare and Medical Devices

Medical devices require reliable and hygienic connections. PCB spring contact find applications in medical equipment such as patient monitoring systems, diagnostic devices, and implantable medical devices. The contacts' high precision and durability are critical in ensuring accurate data transmission and patient safety.

Telecommunications

In the telecommunications industry, PCB spring contacts are used in connectors for mobile devices, base stations, and networking equipment. They enable quick and secure connections for data transfer and communication services, contributing to reliable telecommunications infrastructure.

Entertainment Electronics



probes, connectors, and test point assemblies, enabling efficient and accurate measurement processes.

Future Trends In PCB Spring Contacts

As technology continues to evolve at a rapid pace, the field of PCB spring contacts is not exempt from innovation. Engineers and manufacturers are continually exploring new trends and advancements to further enhance connectivity, reliability, and overall performance. Some of the future trends in PCB spring contacts include:

High-Density Applications

The demand for smaller, more compact electronic devices is ever-increasing. Future trends in PCB spring contact involve pushing the boundaries of miniaturization while maintaining high contact density. Engineers are working on designing ultra-compact spring contacts that can handle multiple connections within limited spaces, enabling advanced functionalities in miniature electronics.

High-Speed Data Transmission

With the advent of 5G and beyond, the need for high-speed data transmission is becoming crucial in various industries. Future PCB spring contact will be optimized to handle high-frequency signals with minimal signal degradation. Enhanced contact materials and designs will ensure that the contacts can reliably transmit data at higher rates, contributing to seamless connectivity and faster communication.

Integration of Smart Technologies

PCB spring contacts are expected to be integrated with smart technologies, such as sensors and data monitoring capabilities. By incorporating these features into the spring contacts, engineers can create self-diagnosing systems that can detect issues with connections, monitor performance, and trigger alerts when maintenance is required. This proactive approach will enhance system reliability and reduce downtime.

Material Advancements

Researchers are continuously exploring new materials to improve the properties of PCB spring contacts. Advancements in material science may lead to the development of spring contacts with superior electrical conductivity, enhanced durability, and resistance to extreme environments. For example, the use of advanced composite materials or nanotechnology may pave the way for stronger and more resilient spring contacts.

Wireless Charging Integration

Wireless charging is gaining popularity in consumer electronics, electric vehicles, and other industries. Future PCB spring contact might incorporate wireless charging capabilities, enabling seamless power transfer without the need for physical connectors. This integration will further enhance the convenience and usability of electronic devices.



The rise of flexible electronics and wearable devices calls for spring contacts that can adapt to various form factors and bending movements. Future trends may involve the development of flexible and stretchable spring contacts that can withstand repeated bending without losing their electrical and mechanical properties.

Environmentally-Friendly Solutions

Sustainability and environmental consciousness are becoming essential aspects of modern technology. Future trends in PCB spring contacts may focus on developing eco-friendly materials and manufacturing processes that reduce the environmental impact without compromising on performance.

Conclusion

In conclusion, the future of PCB spring contacts looks promising, with innovations aimed at advancing connectivity, reliability, and adaptability. Miniaturization, high-speed data transmission, integration of smart technologies, material advancements, wireless charging capabilities, and increased current handling capacity are just some of the exciting trends that engineers and researchers are exploring. As these trends materialize, electronic devices will become even more efficient, reliable, and environmentally responsible, transforming the way we interact with technology in the years to come. PCB spring contact will continue to be a key enabler in creating the cutting-edge electronic devices and systems of the future.

Ready to take your PCB designs to the next level?

Experience the quality and precision of MorePCB today.

Contact us to explore our services and request a quote.

Let's bring your ideas to life!

Tag: PCB Components

REQUEST A FREE QUOTE

Still, need help? Contact Us: sales@morepcb.com



How To Drill Holes in PCB At Home: A Complete Guide

Isola PCB: A Comprehensive Guide

Laser Etching PCB: A Comprehensive Guide for Beginners

PCB Pitch: The Ultimate Guide to Crafting an Effective PCB Pitch

VIEW OUR ALL BLOGS



Keyword Search...

SEARCH



Tags:

PCB Design

PCB Fabrication

PCB Assembly

PCB Components

PCB Styles

PCB News

Leave a Comment

Your email address will not be published. Required fields are marked *

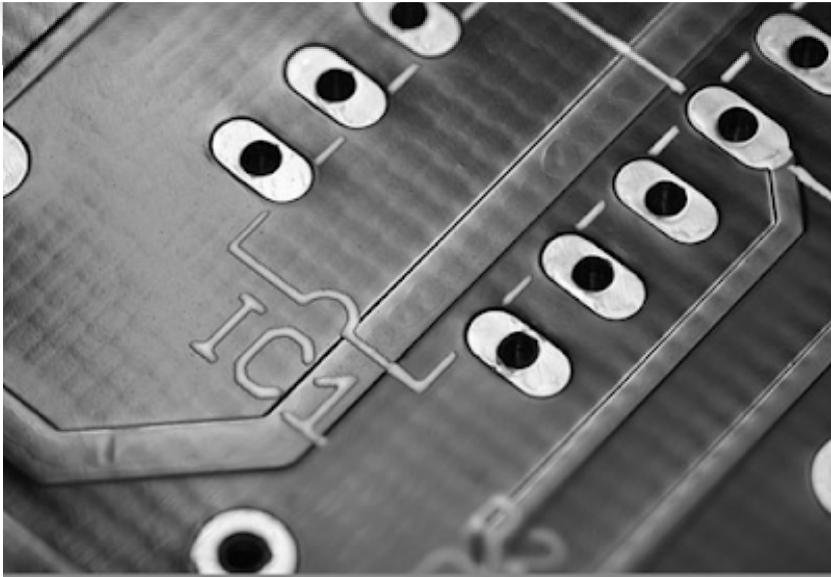
Type here..



POST COMMENT »

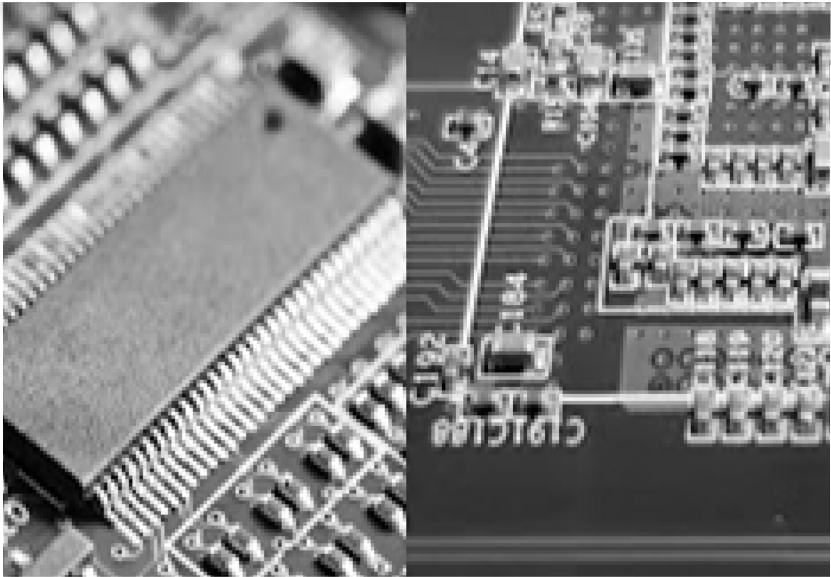
Read More

Recommended Article



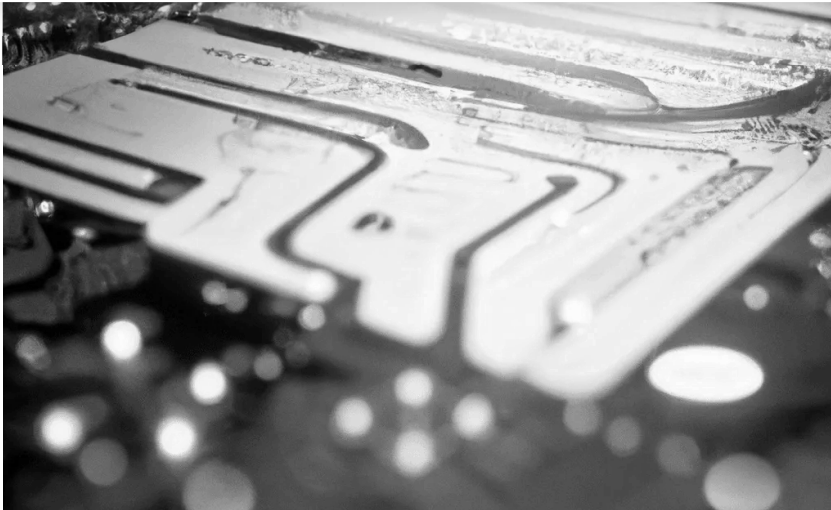
PCB Pads

Introduction Printed Circuit Boards (PCBs) form the backbone of virtually all modern electronic devices, orchestrating the intricate dance of electrons that powers our technology-driven



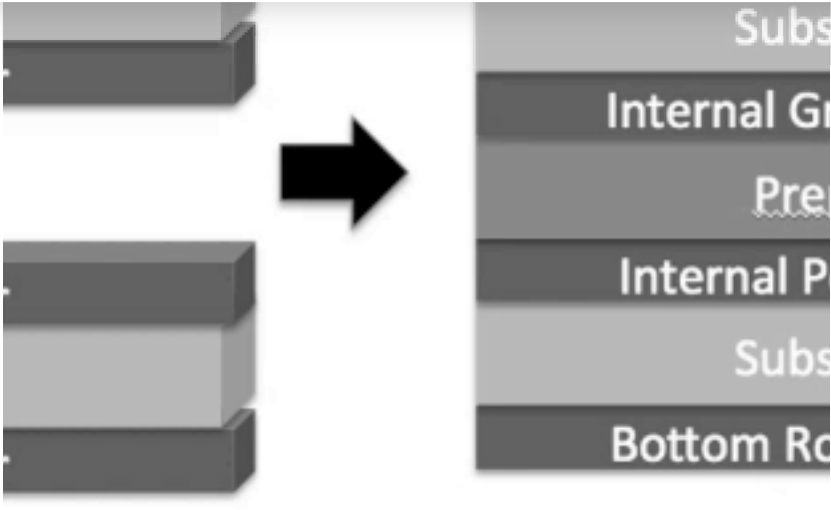
PCB Blue vs Green: a comprehensive comparison of solder masks

Introduction In the world of electronics, Printed Circuit Boards (PCBs) serve as the backbone of countless devices, enabling the seamless flow of signals and power.



What You Need to Know About Hard Gold PCB

Understanding Hard Gold PCB Do you want to know about Hard Gold PCBs? It's important to understand their special properties. Check out the table for



PCB Prepreg: A Comprehensive Guide

Introduction PCB Prepreg, a dielectric substance, is placed between two cores or a core and copper foil in a printed circuit board (PCB) to



+86-769-81222003

sales@morepcb.com

WhatsApp

Wechat

Skype

 No. 188 Shajiao RD, HuMen,
DongGuan,523899 China


PCB FAB

Prototype PCB Fabrication

FR4 PCB

PTFE RF PCB

Aluminum PCB

Rigid-Flex PCB

HDI PCB

Multilayer PCB

Ceramic PCB

Thick Copper PCB

LED PCB

PCB Assembly

Turnkey PCB Assembly

Prototype PCB Assembly

SMT Stencil

Low Volume PCB Assembly

High Volume PCB Assembly

Delivery



Certifications

About Us

About MorePCB

Why Choose MorePCB?

PCB Assembly Factory Show

Quality Assurance

Testimonials



Quoi



Copyright © 2007-2024, MorePCB All Rights Reserved.

[Privacy Policy](#)

[Terms & Conditions](#)