



US 20060142654A1

(19) **United States**(12) **Patent Application Publication****Rytky**(10) **Pub. No.: US 2006/0142654 A1**(43) **Pub. Date: Jun. 29, 2006**(54) **SENSOR SYSTEM, GARMENT AND HEART RATE MONITOR****Publication Classification**(75) Inventor: **Pekka Rytky, Oulu (FI)**(51) **Int. Cl.****A61B 5/04** (2006.01)(52) **U.S. Cl.** ..... **600/388; 600/509; 600/372**

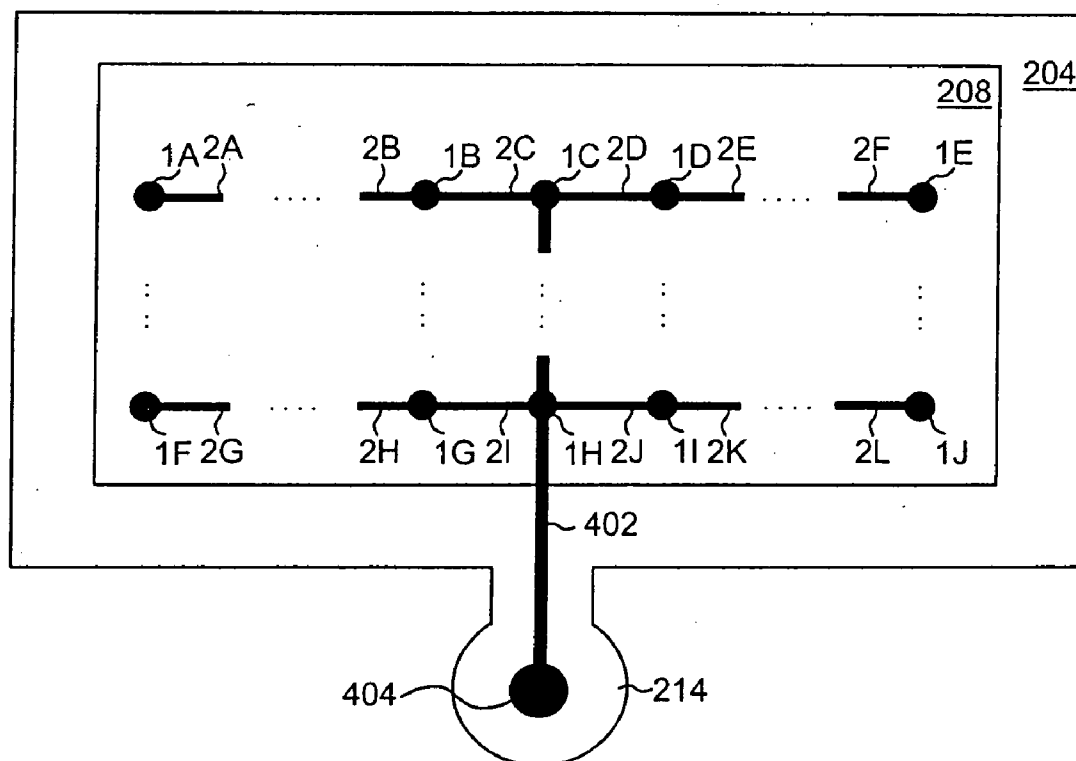
Correspondence Address:  
**HOFFMANN & BARON, LLP**  
**6900 JERICHO TURNPIKE**  
**SYOSSET, NY 11791 (US)**

(57) **ABSTRACT**(73) Assignee: **Polar Electro Oy**(21) Appl. No.: **11/314,746**(22) Filed: **Dec. 21, 2005**(30) **Foreign Application Priority Data**

Dec. 28, 2004 (FI)..... 20045503

The invention relates to a sensor system, a garment and a heart rate monitor. The sensor system comprises at least one flexible film structure comprising: a first insulation layer and at least one electric conductor layer formed on top of the first insulation layer and comprising an electrode area, which is configured to establish an electric contact with the surface of the user's skin and to generate as output an electric signal proportional to a momentary value of the electrocardiogram.

400A

**MASIMO 1074****Masimo v. Apple****IPR2023-00745**

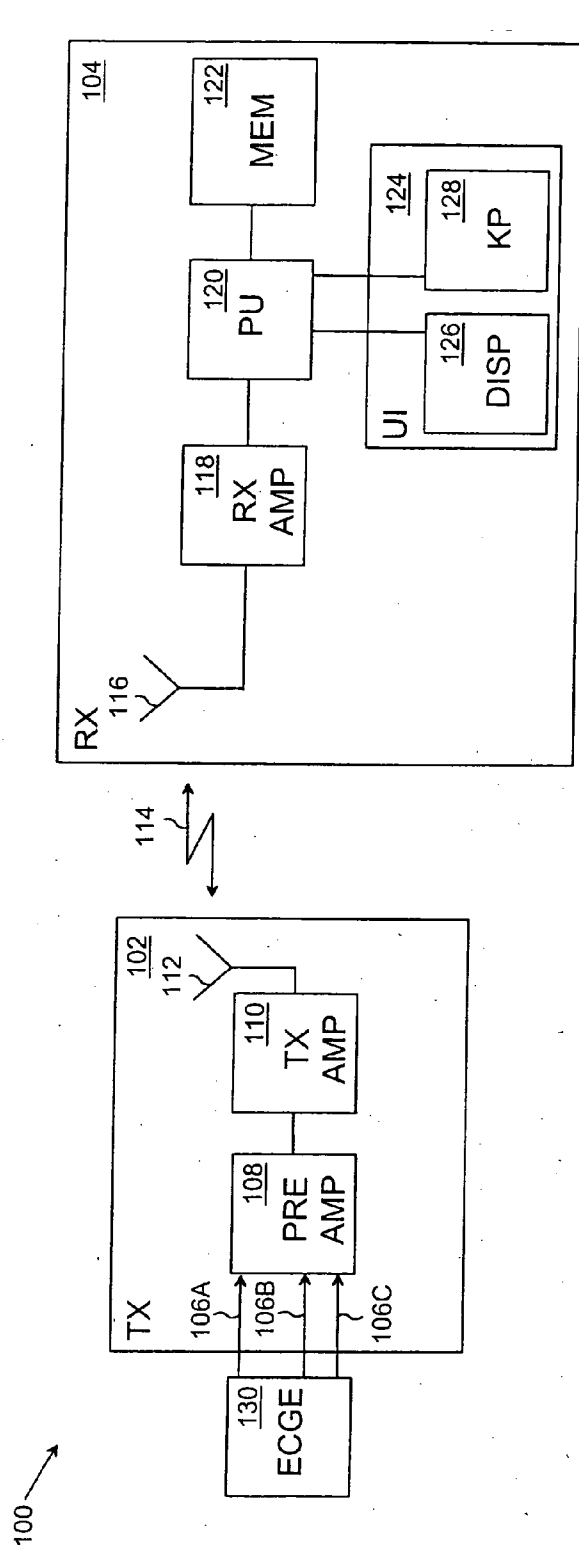


Fig. 1

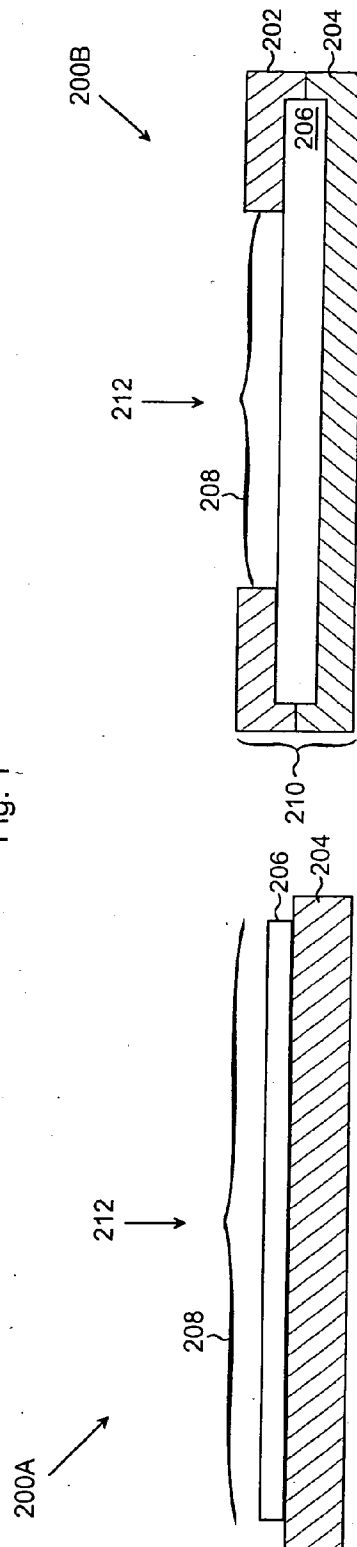


Fig. 2A

Fig. 2B

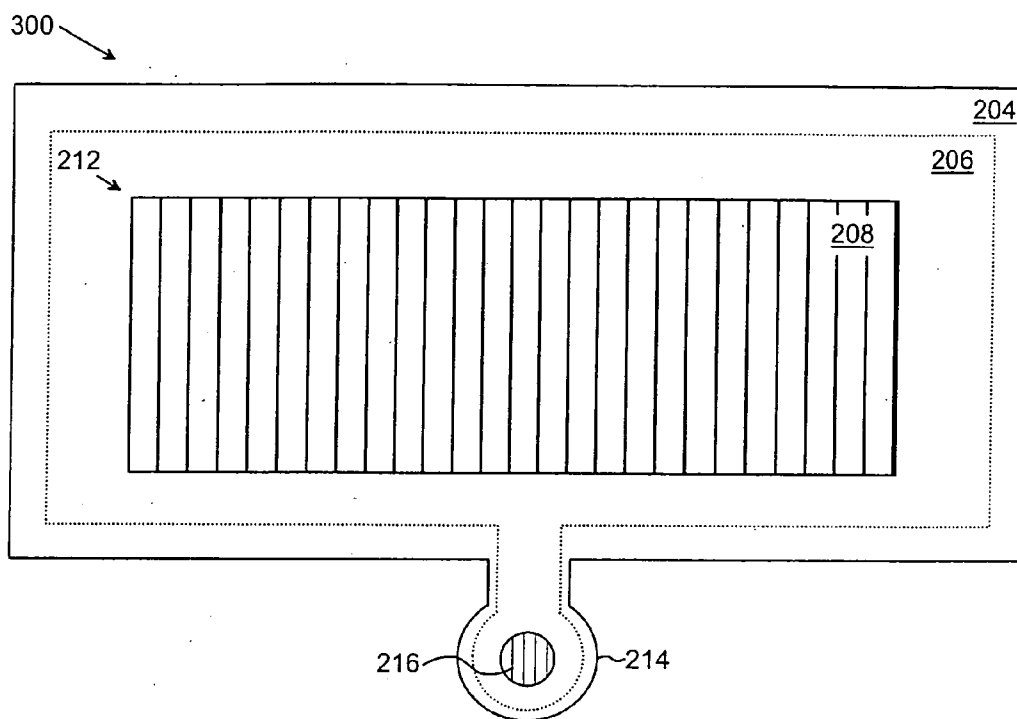


Fig. 3

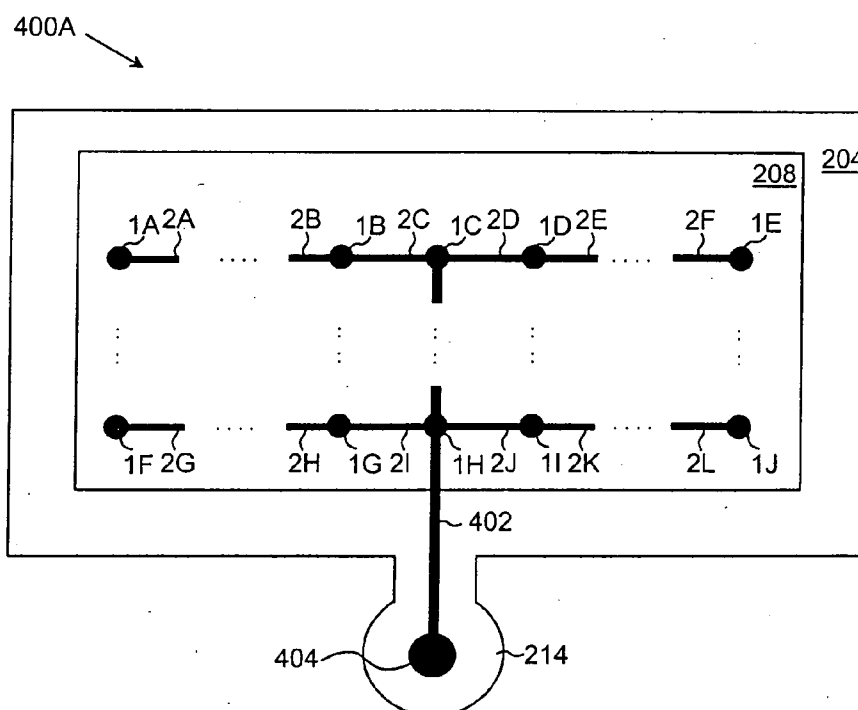


Fig. 4A

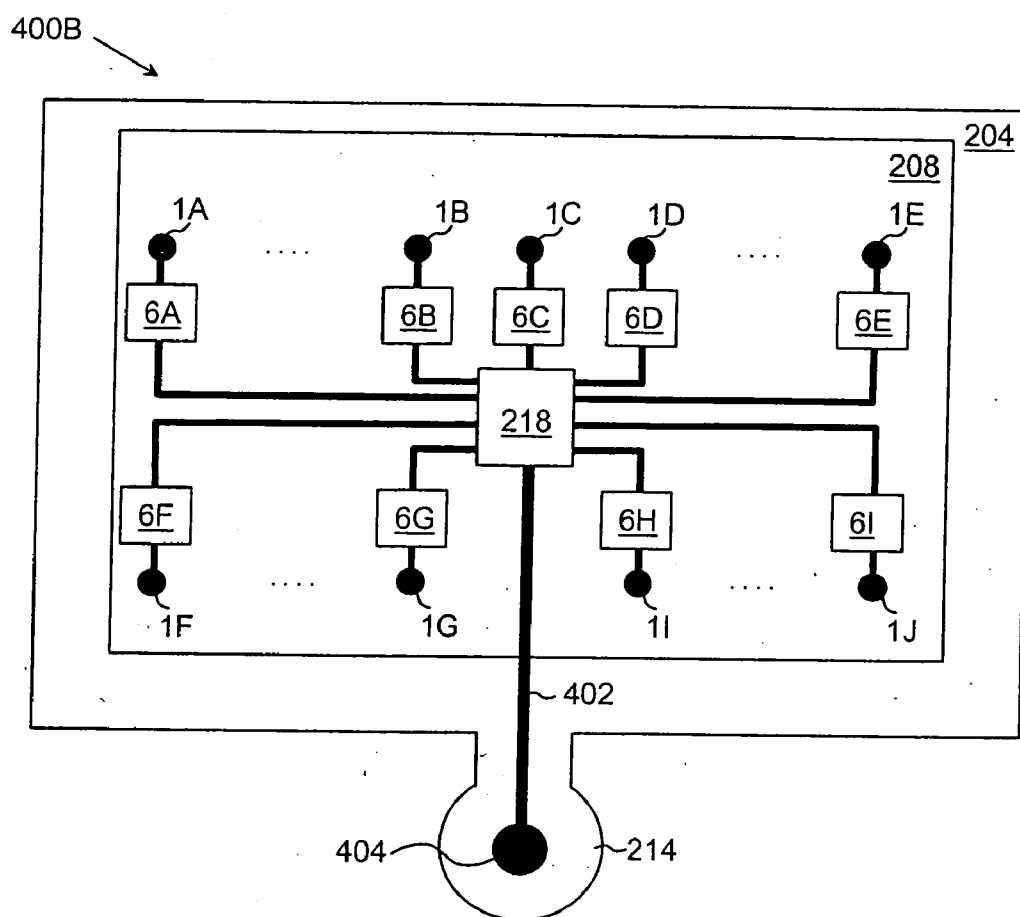


Fig. 4B

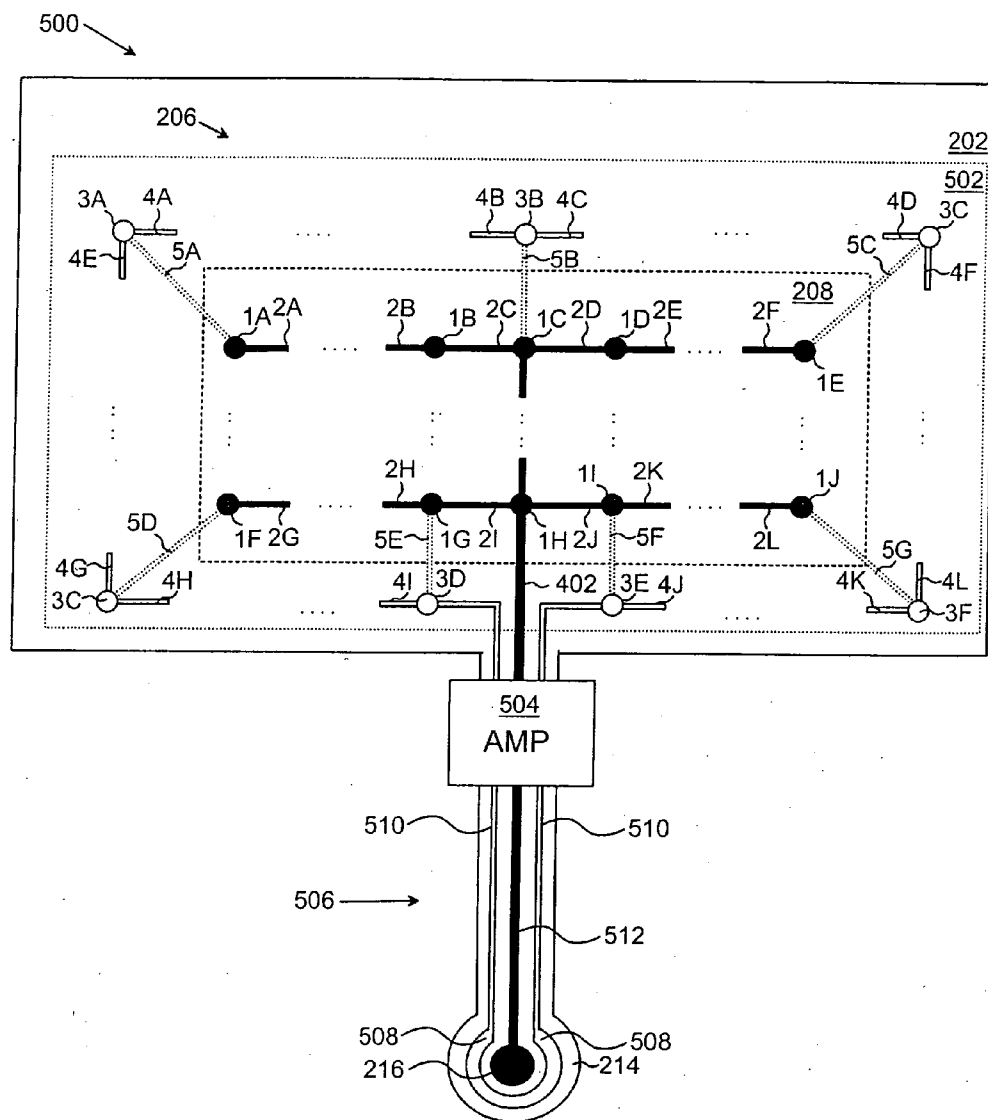


Fig. 5

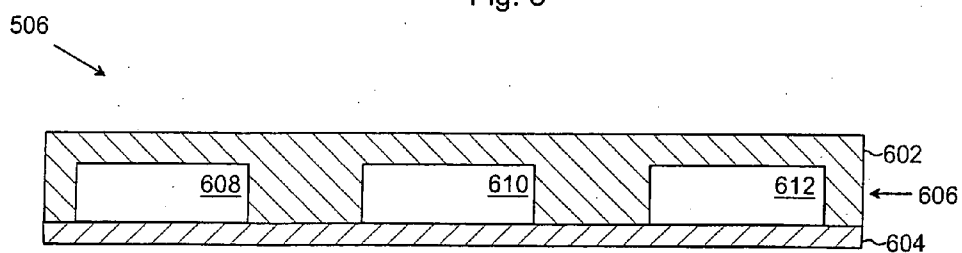


Fig. 6

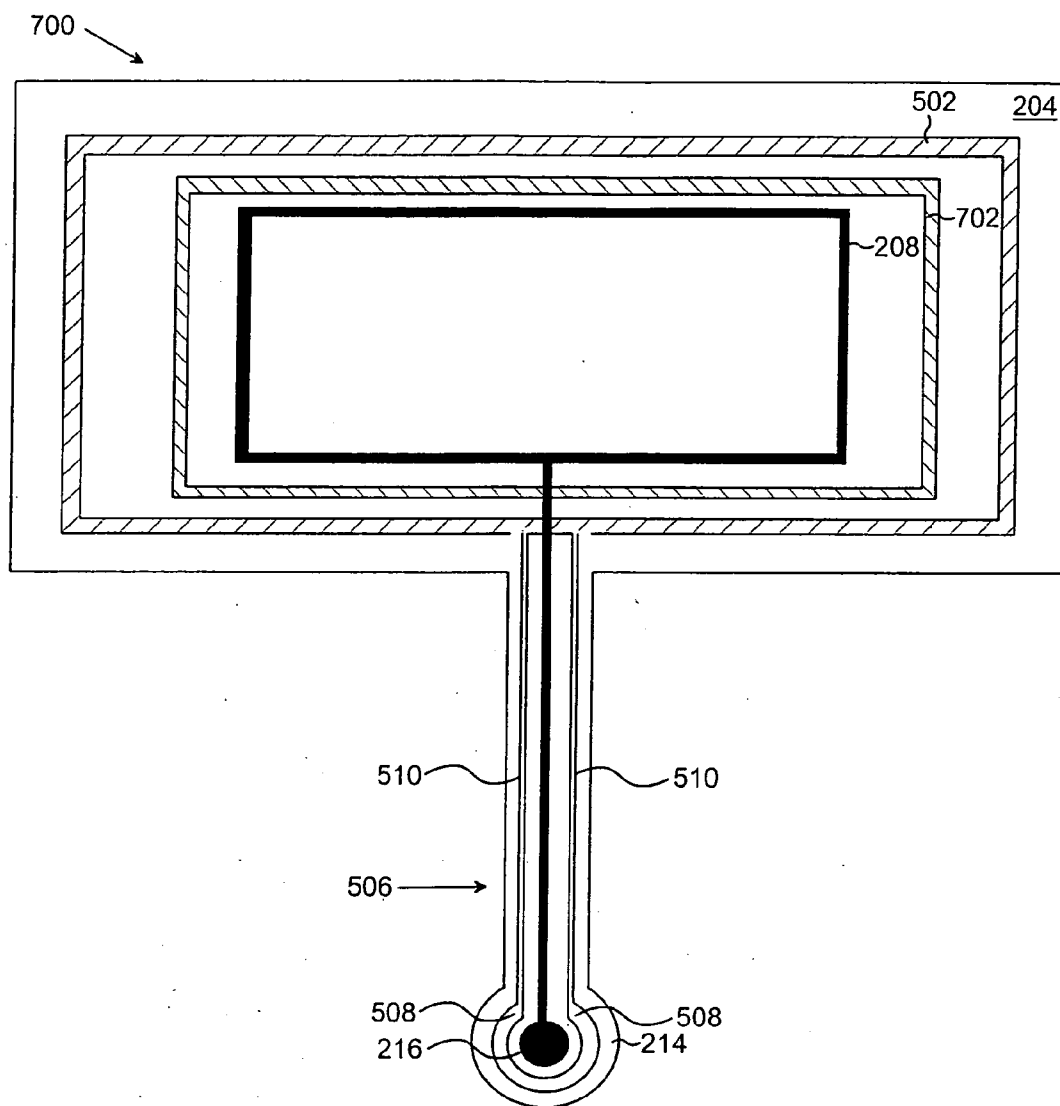


Fig. 7

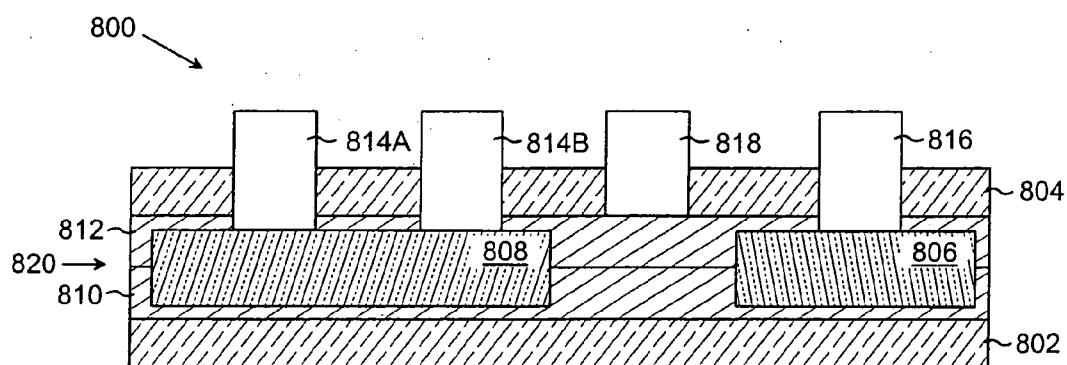


Fig. 8

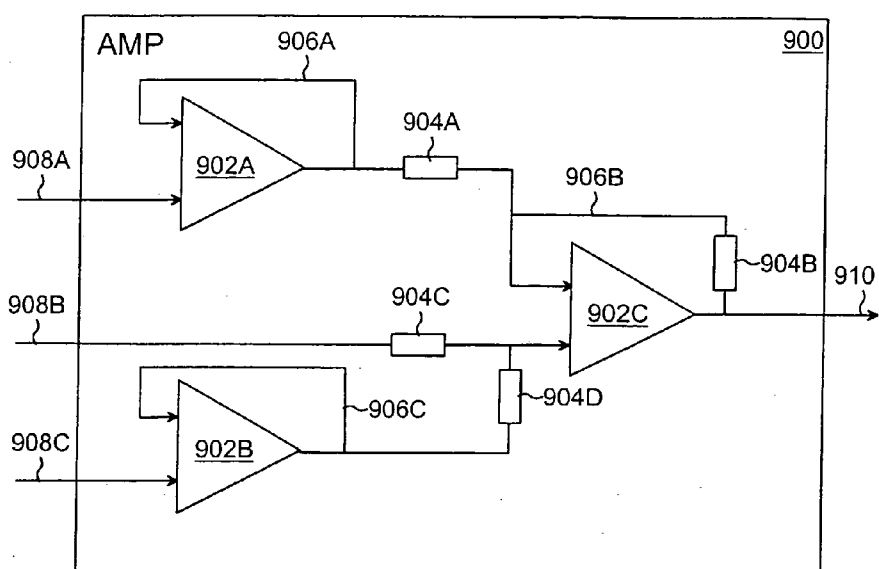


Fig. 9

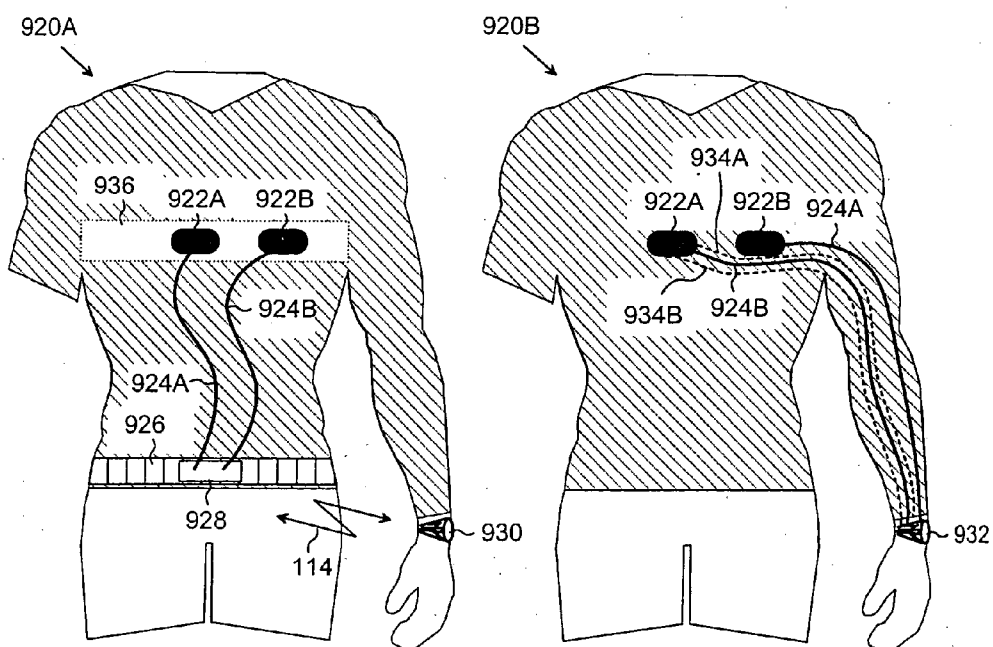


Fig. 10

Fig. 11

## SENSOR SYSTEM, GARMENT AND HEART RATE MONITOR

### FIELD

[0001] The invention relates to a sensor system a garment and a heart rate monitor.

### BACKGROUND

[0002] A user-specific portable heart rate monitor typically comprises a transmitter belt to be placed around the user's chest, which transmitter belt indicates an electrocardiogram from the surface of the user's skin and sends the electrocardiogram or a pulse characterizing a part thereof wirelessly to the central processing unit of the heart rate monitor, which typically is a wrist receiver to be placed on the user's wrist. When measuring an electrocardiogram weak voltage levels are determined from the surface of the skin, which requires a high-quality electric contact between the user's skin and the detection electronics of the transmitter belt. An electric contact of high quality typically requires that the transmitter belt is sufficiently tightly placed around the chest, an adequate amount of moisture between the transmitter belt and the skin to provide the tightness and a precise positioning of the transmission location within the area of the chest. The criteria presented above make the use of the heart rate monitor more difficult and increase the malfunctions of the heart rate monitor.

[0003] It is therefore useful to consider techniques that allow improving the quality of electrocardiogram measurement and facilitate the use of the heart rate monitor.

### BRIEF DESCRIPTION

[0004] It is an object of the invention to implement a sensor system, a garment and a heart rate monitor in order to achieve a reliable heart rate measuring that in view of the user is easy to employ. A first aspect of the invention is a sensor system for indicating an electrocardiogram from the surface of the user's skin, and the sensor system is configured to be connected to a user-specific heart rate monitor and the sensor system comprises at least one flexible film structure comprising: a first insulation layer and at least one electric conductor layer formed on top of the first insulation layer and comprising an electrode area, which is configured to establish an electric contact with the surface of the user's skin and to generate as output an electric signal proportional to a momentary value of the electrocardiogram.

[0005] A second aspect of the invention is a garment comprising a sensor system integrated into the garment for indicating an electrocardiogram from the surface of the user's skin, and the sensor system is configured to be connected to a user-specific heart rate monitor and comprises at least one flexible film structure comprising: a first insulation layer and at least one electric conductor layer formed on top of the first insulation layer and comprising an electrode area, which is configured to establish an electric contact with the surface of the user's skin and to generate as output an electric signal proportional to a momentary value of the electrocardiogram.

[0006] A further aspect of the invention is a user-specific heart rate monitor comprising a sensor system for indicating an electrocardiogram from the surface of the skin, and the

sensor system comprises at least one flexible film structure comprising: a first insulation layer and at least one electric conductor layer formed on top of the first insulation layer and comprising an electrode area, which is configured to establish an electric contact with the surface of the user's skin and to generate as output an electric signal proportional to a momentary value of the electrocardiogram.

[0007] The preferred embodiments of the invention are disclosed in the dependent claims.

[0008] The invention is based on the idea that a flexible film structure that may be integrated into the garment is used as the sensor of the heart rate monitor.

[0009] The sensor system, garment and heart rate monitor according to the invention provide several advantages. The flexible film structure allows implementing the sensor system such that the pressing sensation placed on the user's body remains insignificant. In addition, the use of the flexible film structure enables to decentralize the heart rate monitor so that for instance the transmitter unit typically used in heart rate monitors can be located far from the sensor system.

### BRIEF DESCRIPTION OF THE DRAWINGS

[0010] In the following the invention will be described in greater detail by means of the preferred embodiments with reference to the drawings, in which

[0011] **FIG. 1** shows an example of the structure of a user-specific heart rate monitor;

[0012] **FIG. 2A** shows a cross-sectional view of a first example of a flexible film structure;

[0013] **FIG. 2B** shows a cross-sectional view of a second example of the flexible film structure;

[0014] **FIG. 3** shows a plan view of a first example of the flexible film structure;

[0015] **FIG. 4A** shows a plan view of a second example of the flexible film structure;

[0016] **FIG. 4B** shows a plan view of a third example of the flexible film structure;

[0017] **FIG. 5** shows a plan view of a fourth example of the flexible film structure;

[0018] **FIG. 6** shows a cross-sectional view of an example of a transfer conductor film;

[0019] **FIG. 7** shows a plan view of a fifth example of the flexible film structure;

[0020] **FIG. 8** shows a cross-sectional view of a second example of the flexible film structure;

[0021] **FIG. 9** shows an example of an amplifier;

[0022] **FIG. 10** shows an example of an embodiment of a garment, and

[0023] **FIG. 11** shows an example of a second embodiment of a garment.

### DESCRIPTION OF THE EMBODIMENTS

[0024] **FIG. 1** shows an example of the structure of a heart rate monitor **100** based on wireless data transmission. The



heart rate monitor **100** typically comprises a sensor system **130**, an ECG preamplifier **108** (ECG, Electrocardiogram) provided with differential input terminals, a transmitter amplifier (TX AMP) **110**, a transmitter antenna **112**, a receiver antenna **116**, a receiver amplifier (RX AMP) **118**, a processing unit (PU) **120**, a memory unit (MEM) **122** and a user interface (UI) **124**.

[0025] In the example shown in **FIG. 1** the heart rate monitor **100** is divided into a transmitter unit **102** and a central processing unit **104** communicating through an electromagnetic field **114**. However, the present solution is not restricted to the divided structure shown, instead the heart rate monitor **100** may be composed of a single functional unit, in which the functionalities of the transmitter unit **102** and the central processing unit **104** are combined.

[0026] The sensor system **130** detects the electrocardiogram of the user from the surface of the user's skin and generates as output electric signals **106A**, **106B**, **106C** proportional to a momentary value of the user's electrocardiogram. The electric signals **106A**, **106B**, **106C** are fed into the ECG preamplifier **108**.

[0027] The ECG preamplifier **108** combines and preamplifies for instance the electric signals **106A**, **106B**, **106C**, thus generating a preamplified ECG signal, which is fed into the transmitter amplifier **110**. The transmitter amplifier **110** may include several successive amplifier levels, such as an AGC (Automatic Gain Control) amplifier and power amplifier.

[0028] An amplified ECG signal is fed into the transmitter antenna **112**, which generates the electromagnetic field **114** transmitting ECG information. The ECG information may comprise for instance the electrocardiogram as such, a part thereof and/or timing information on the heart rate. The timing information may comprise a timing pulse that represents the timing of a predetermined part of the ECG.

[0029] The timing information can be determined by identifying for instance a QRS complex of the ECG and by determining the timing of the QRS complex. A QRS complex can be indicated with a pulse detector, for example. The transmitter unit **102** may for instance generate a burst that corresponds to the timing of each pulse and is sent to the central processing unit **104**. The central processing unit **104** receives the bursts and may for instance determine the heart rate interval between the successive bursts.

[0030] The receiver antenna **116** indicates the electromagnetic field **114** generated by the transmitter antenna **112** and generates an induced electric signal, which is fed into the receiver amplifier **118**.

[0031] The receiver amplifier **118** carries out the processing of the electric signal, such as filtering and amplification. In addition the receiver amplifier **118** may comprise several successive regulating levels.

[0032] The receiver amplifier **118** feeds the electric signal into the processing unit **120**, which may perform analogous signal shaping of the electric signal, such as filtering and analog-digital conversion. In addition, digital processing such as digital filtering, signal shaping, ECG signal indication and ECG signal analysis can be carried out in the processing unit **120**.

[0033] The value of the heart rate variable characterizing the heart rate can be determined in the processing unit **120**. The heart rate variable may be a heart rate interval, a heart rate frequency; variation in heart rate interval and/or variation in heart rate frequency.

[0034] The processing unit **120** can be implemented using analogous circuits, ASIC circuits (Application Specific Integrated Circuit), a digital processor, memory and computer software. The processing unit **120** may form a part of the computer in the heart rate monitor **100**.

[0035] Some of the data and manager information provided in the processing unit **120** can be stored in a memory unit **122** connected to the processing unit **120**. In addition the memory unit **122** may comprise encoded instructions for performing the computer process in the processing unit **120**.

[0036] The user interface **124** typically comprises a display unit **126** and a display controller. The display unit **126** may comprise for instance LCD (Liquid Crystal Display) components.

[0037] The user interface **124** further comprises a keypad **128** allowing the user to feed commands into the heart rate monitor **100**.

[0038] The transmitter unit **102** shown in **FIG. 1** typically comprises apparatus parts **106A** to **112** and carries out the ECG measuring and sends the ECG information to the central processing unit **104**. In some embodiments the transmitter unit **102** may comprise a heart rate indicator, which indicates a predetermined part of the electrocardiogram, generates the transmitter burst and/or the bit stream representing the timing of the predetermined part of the electrocardiogram and sends the transmitter burst to the central processing unit **104**.

[0039] The central processing unit **104** typically comprises apparatus parts **116** to **128**, which process the electric signal and the ECG information used in wireless data transmission and provide the user interface.

[0040] With reference to **FIG. 2** let us take a closer look at the cross section of a film structure **200A** of the sensor system **130**. The film structure **200A** comprises a first insulation layer **204** and an electric conductor layer **206** formed on top of the first insulation layer **204**. The first insulation layer **204** is typically made of polycarbonate film and may function as a support structure of the film structure **200A**. The electric conductor layer **206** may be made of carbon polymer paste, where carbon acts as the component conducting electricity.

[0041] The film structure **200A** can also be referred to as a sensor. The sensor system **130** includes at least one film structure **200A**.

[0042] **FIG. 2B** shows an example of an embodiment, in which a film structure **200B** comprises a second insulation layer **202** such that the electric conductor layer **206** is formed between the first insulation layer **204** and the second insulation layer **202**, and the second insulation layer **202** comprises an opening **212**, through which opening **212** an electrode area **208** establishes an electric contact with the surface of the user's skin.

[0043] In an embodiment the first insulation layer **204** and the second insulation layer **202** are made of polycarbonate

film, the thickness of which is typically fractions of millimetres. The electric conductor layer **206** can be formed for instance by pressing carbon polymer on top of the insulation layer **202**, **204**, where carbon functions as a conductor. Thus a thin and bendable film structure **200A**, **200B** is achieved, the thickness of which is fractions of millimetres and which bends in accordance with the surface of the skin. In an embodiment the thickness **210** of the film structure **200A**, **200B** is smaller than 0.3 millimetres. However, the solution shown is not restricted to the thickness and materials shown. The film structure shown can also be referred to as a bendable conductor base, a flex and a flexible circuit board.

[0044] In an embodiment the second insulation layer **204** is formed of a garment material such as cloth, to which the film structure **200B** is fastened. Thus the garment material opening **212** may be a lead-in through the garment material, the lead-in establishing an electric contact between the electrode area **208** and the surface of the user's skin. The lead-in may be made of electrically conducting material such as polyurethane.

[0045] In an embodiment the film structure **200A**, **200B** includes several electric conductor layers, which are closed between the first insulation layer **204** and the second insulation layer **202**. Consequently one or more insulation layers may be provided between the conductor layers. In an embodiment the electric conductor layer **206** comprises conductor structures insulated from one another. Then the conductor structures are located on the same level.

[0046] The electric conductor layer **206** comprises an electrode area **208**, which establishes an electric indirect or direct contact when used on the surface of the user's skin and generates as output an electric signal **106A**, **106B**, **106C** proportional to a momentary value of the electrocardiogram. The second insulation layer **202** comprises at least one opening **212**, through which the electrode area **208** establishes an electric contact with the surface of the user's skin. Conducting material may be provided between the surface of the skin and the electrode area.

[0047] FIG. 3 shows a film structure **300** of the sensor system **130** at skin level. In this example the second insulation layer **202** forms the topmost layer, under which the electric conductor layer **206** is shown as an area defined by the dashed line. The electrode area **208** is shown through the opening **212**. The first insulation layer **204** remains beneath the structure shown and it is not referred to with a reference numeral.

[0048] FIG. 3 also shows a connection structure **214** of the film structure **300**, through which the electric conductor layer **206** can be connected for instance to the ECG preamplifier **108** or to any electronic equipment in the heart rate monitor. The external connection structure **214** typically comprises the film structure **200A**, **200B** shown in FIGS. **2A**, **2B** and an opening in the second insulation layer **202**, through which opening the output **216** of the conductor layer can be implemented.

[0049] In the embodiment shown in FIG. 4A the electrode area **208** of a film structure **400A** comprises several electrodes **1A** to **1J** connected together with a first impedance connection **2A** to **2L** and the electrodes **1A** to **1J** are configured to establish an electric contact with the surface of the skin and to generate as output an electric signal propor-

tional to the value of the electrocardiogram. The electrode area **208** is thus formed of the electrodes **1A** to **1J**, and the first impedance connections **2A** to **2L** are insulated from the user's skin.

[0050] In this context the impedance connection **2A** to **2L** refers to an impedance such as a resistive impedance between the electrodes **1A** to **1J**, whereby the resistance of the first impedance connection **2A** to **2L** may for example range between 1 k $\Omega$  to 1 M $\Omega$ , however, without being restricted to the values shown. The first impedance connection **2A** to **2L** and the desired impedance of the first impedance connection **2A** to **2L** can be achieved by connecting the electrodes **1A** to **1J** together for instance using an appropriate carbon polymer paste conductor pattern.

[0051] The electrodes **1A** to **1J** may form groups, in which successive electrodes are connected together in series. The electrodes **1A** to **1J** may also form a matrix structure, in which the electrodes **1A** to **1J** may be connected to three or four other electrodes **1A** to **1J**. The groups can be connected to a main conductor **402**, which conducts the electric signal generated by the electrodes to an electrode output **404**. The use of the groups and the impedance connection between the groups allow reducing the interference signals caused by individual areas. However, the solution shown is not restricted to the electrode configuration shown, instead the electrodes **1A** to **1J** can be differently connected together and to the main conductor **402** depending on the embodiment.

[0052] In the example of the film structure **400B** shown in FIG. 4B the electrodes **1A** to **1J** are connected to an active component **6A** to **6I** and the signals generated therefrom are combined in a combiner **218**. The active components **6A** to **6I** may be amplifiers, in which case the impedance connection in FIG. 4A is manageable.

[0053] The combiner **218** may carry out a mathematical function such as a mean or a sum from the signals obtained from the active components **6A** to **6I**. The combiner may be an amplifier, for example. In an embodiment the combiner **218** includes a processor and is therefore able to perform advanced signal processing operations, such as selection of signals obtained from the active components **6A** to **6I** and/or directly from the electrodes **1A** to **1J** and/or determination of the correlation between the two.

[0054] With reference to FIG. 5, in an embodiment the electric conductor layer **206** comprises a protective area **502** surrounding the electrode area **208** at film structure **500** level. The protective area **502** is configured to establish an electric contact with the surface of the skin and to protect the sensor system **130** from static electricity. In FIG. 5 the electrode area **208** is an area defined by a dashed line and the protective area **502** is an area defined by a dashed line and a dotted line. In an embodiment the protective area **502** is separated from the electrode area **208**, in which case a conductor structure corresponding to the electrode area **208** but separated from the electrode area **208** should be added to FIG. 2.

[0055] The second insulation layer **202** may comprise an opening corresponding to the opening **212** in order to establish an electric contact between the surface of the skin and the protective area **502**. The electric contact may be a direct contact or an indirect one. In the latter case conducting material may be provided between the surface of the skin and the protective area **502**.

[0056] The operation of the protective area 502 is based on the fact that when an induced voltage is brought from the electrode area 208 to the differential amplifier simultaneously with the voltage of the protective area 502, the static voltage component is annulled and the dependence of the output voltage of the differential amplifier on the static voltage component remains insignificant.

[0057] In an embodiment the protective area 502 comprises protective electrodes 3A to 3F connected with a second impedance connection 4A to 4L. The resistance component of the second impedance connection 4A to 4L may range for instance between 1 k $\Omega$  to 1 M $\Omega$ , however without being restricted to the values shown. The second impedance connection 4A to 4L and the desired impedance of the second impedance connection 4A to 4L can be achieved by connecting the protective electrodes 3A to 3J together using for instance an appropriate carbon polymer paste conductor pattern. The protective area 502 can be connected to the connection structure 214 with protective input conductors 510, which may be provided with an output 508 of the protective area for instance for the ECG preamplifier 108 in the heart rate monitor.

[0058] In an embodiment the protective area 502 is connected with a third impedance connection 5A to 5G to the electrode area 208, where the impedance of the third impedance connection 5A to 5G exceeds the impedance of the first impedance connection 2A to 2L. In an embodiment the resistive component of the third impedance connection exceeds 1 M $\Omega$ . In the example shown in FIG. 5 the protective electrodes 3A to 3F are connected with a third impedance connection 5A to 5G to the electrodes 1A to 1J.

[0059] The third impedance connection 5A to 5G and the desired impedance of the third impedance connection 5A to 5G can be formed for instance using an appropriate carbon polymer paste conductor pattern.

[0060] With reference to FIGS. 5 and 6 the sensor system 130 comprises in one embodiment at least one transfer conductor film 506 that allows establishing an electric contact between the electric conductor layer 206 and the central processing unit 104 or between the electric conductor layer 206 and the transmitter unit 102. The transfer conductor film 506 is connected to the electric conductor layer 206 and comprises a first transfer conductor insulation layer 602 and a second transfer insulation layer 604 shown in the cross-sectional view in FIG. 6. In addition the transfer conductor film 506 comprises at least one electric transfer conductor layer 606, which is closed between the first transfer conductor insulation layer 602 and the second transfer conductor insulation layer 604. The transfer conductor layer 606 comprises at least one separated transfer input 608, 610, 612. The electric transfer conductor layer corresponds to the transfer input conductor 512 shown in FIG. 5 that functions as an extension of the main conductor 402.

[0061] The object of the transfer conductor film 506 is to function as a flexible conductor between the measuring point such as the user's chest and the electronics in the heart rate monitor such as the transmitter unit 102. In such a case the transmitter unit 102 can be freely located for instance within the area of the pelvis or within another appropriate area of the user's body, where the transmitter unit 102 can appropriately be placed.

[0062] The transfer conductor film 506 shown in FIG. 6 can also be surrounded with a conductor layer, which is surrounded with an insulation layer, in which case a coaxial structure is achieved and the interference protection of the transfer conductor film 506 is improved.

[0063] Still referring to FIG. 5, the sensor system 130 may also comprise at least one signal amplifier 504 connected to the electrode area 208 in order to amplify the electric signal generated in the electrode area 208. The signal amplifier 504 can also be connected to a protective area 502. The signal amplifier 504 is for instance a differential amplifier, the first input of which is supplied with a signal induced in the electrode area 208 and a second input is connected to the potential of the protective area 502. The signal amplifier 504 may obtain the operating voltage thereof through the transfer conductor film 506 from the transmitter unit 102 or the central unit 104, in which case the transfer conductor film 506 may be provided with a separate conductor structure for feeding power into the signal amplifier 504. The signal amplifier 504 can be placed within the sensor area or it may be connected to the transfer conductor film 506.

[0064] Instead of the signal amplifier 504 an impedance converter can be used in an embodiment when no amplification exists or when the amplification is <1.

[0065] With reference to FIG. 7 the sensor system 130 additionally comprises an insulation zone 702, which is located between the electrode area 208 and the protective area 502 at the film structure level and which is arranged to be at least partly in mechanical contact with the surface of the skin when used. The idea of the insulation layer 702 is to separate the electrode area 208 from the protective area 502 and to prevent a short circuit from occurring between the electrode area 208 and the protective area 502.

[0066] What is shown as an aspect of the invention is a garment comprising a sensor system 130 integrated into the garment for indicating an electrocardiogram from the surface of the user's skin.

[0067] FIG. 8 shows an example of a layer structure 800 comprising a first garment structure 802 and a second garment structure 804. A flexible film structure 820 according to the solution shown is provided between the first garment layer 802 and the second garment layer 804, the film structure comprising a first insulation layer 802 and a second insulation layer 804. A first electric conductor layer 806 is provided between the first insulation layer 802 and the second insulation layer 804 as well as a second electric conductor layer 808. In the example shown in the Figure the first electric conductor layer 806 functions for instance as a conductor layer for the protective area 502 and the second electric conductor layer 808 functions as the conductor layer of the electrode area 208.

[0068] In an embodiment the garment comprises at least one contact element 814A, 814B, 816 for establishing an electric contact from the electric conductor layer 806, 808 on the surface of the user's skin. The contact elements 814A, 814B shown in the Figure are contact elements of the electrode area 208, whereby the contact elements 814A, 814B may be connected for instance to the electrodes 1A to 1J shown in FIGS. 4A, 4B and 5. The contact element 816 may be connected to the protective electrode 3A to 3F shown in FIG. 5. The contact elements 814A, 814B, 816 may for

instance be made of conductive polyurethane, silver-containing textile fibre and/or silver chloride plastic.

[0069] FIG. 8 also shows an insulation element 818 of the insulation area 502 that establishes a mechanical contact with the surface of the skin. The insulation element 818 may be made of electrically insulating polyurethane.

[0070] In accordance with FIG. 8 the layer structure can be made for instance by pressing the shirt from the sensor area into an injection mould, where the contact elements 814A, 814B, 818 are adhered to the conductive conductor layer 206 of the flexible film. What is then created is an integrated structure formed of the garment material and the flexible film, and a sensor system does not necessarily have to be installed separately into the body in order to use the heart rate monitor.

[0071] FIG. 9 shows an example of a differential amplifier connection 900 that allows amplifying the signals of a sensor system 130 including two sensors. The differential amplifier connection 900 can also be referred to as an instrumentation amplifier. The differential amplifier connection 900 comprises operation amplifiers 902A, 902B, 902C provided with a feedback 906A, 906B, 906C. In the example shown the operation amplifiers 902A and 902B are voltage followers and the operation amplifier 902C is a differential amplifier. In addition the differential amplifier connection 900 comprises resistors 904A, 904B, 904C, 904D.

[0072] In the example shown the differential amplifier connection 900 comprises a first input 908A, a second input 908B and a third input 908C. The second input 908B can be connected to the potential of the protective area 502 of the sensors that may be the ground level. The second input 908B can also be connected to a separate ground electrode, which may be located anywhere on the surface of the skin. A signal obtained from the electrode area 208 of the first sensor can be fed into the first input 908A. A signal obtained from the electrode area 208 of the second sensor can be fed into the third input 908C. The differential amplifier connection 900 provides a voltage 910 proportional to the potential difference of the signals generated as output in the electrode area 208 of said two sensors.

[0073] Instead of the differential amplifier connection 900 a one-sided voltage amplifier that lacks a voltage follower 902B can be used in one embodiment. Then the signals obtained from the electrode areas 502 of different sensors are fed into the first input 908A.

[0074] Let us with reference to FIGS. 10 and 11 take a closer look at the embodiments of the sensor system 130 of the two sensors 922A, 922B. The sensor system 130 comprises the first sensor 922A and the second sensor 922B, which are implemented using the flexible film structure according to the solution shown. The sensors 922A, 922B can be connected to the amplifier 900 as shown in FIG. 9.

[0075] FIG. 10 also shows a pressing structure 936 integrated into the garment 920A. The pressing structure 936 is used to press the contact elements 814A, 814B, 816, 818 against the user's skin. The pressing structure 936 may be a flexible band structure located within the area of the sensors that places a light and broad press on the sensors 922A, 922B, whereby the flexible film structure is lightly set against the skin without causing a pressing sensation. The pressing structure 936 can also be implemented with the

texture structure of the garment 920A, in which case the garment 920A is partly or completely made of flexible material. The garment may for instance be a sports shirt, a swim shirt or any garment that makes heart rate monitoring possible.

[0076] In the examples shown in FIGS. 10 and 11 the sensors 922A, 922B are integrated into a part of the shirt 920A, 920B covering the chest. The exact location of the sensors 922A, 922B in respect of the user's body is known per se.

[0077] In the embodiment shown in FIG. 10 the heart rate monitor comprises a transmitter unit 928 and a central processing unit 930 communicating through an electromagnetic field 114 or any other wireless connection. Then the electric signal induced in the sensors 922A, 922B is applied from the sensors 922A, 922B to the transmitter unit 928 for instance by means of transfer conductor films 924A, 924B. An example showing the structure of transfer conductor films 924A, 924B is shown in FIGS. 5 and 6. The transfer conductor films 924A, 924B originating from different sensors can also be integrated into the same film structure. The transmitter unit 928 can be fastened for instance to a belt 926 using a fixed fastening or snap-in fasteners such as push buttons. Then the transmitter unit 928 is located in an area, where a natural press is focused on the body, and the transmitter unit 928 does not cause any additional pressing sensation. In an embodiment the transfer conductor film 924A, 924B and the transmitter unit 928 are connected together with snap-in fasteners, which are known as such from other contexts.

[0078] If the sensors 922A, 922B include active elements 6A to 6I, 218 and/or the amplifier 504, then the operating voltage of the active elements 6A to 6I, 218 and/or the amplifier 504 can be fed from the transmitter unit 928.

[0079] In the embodiment shown in FIG. 11 the heart rate monitor comprises a central processing unit 932, which is directly connected to the sensors 922A, 922B for instance through the transfer conductor films 924A, 926B. Thus the central processing unit 932 typically comprises the preamplifier of the transmitter unit 102 shown in FIG. 1, which may be directly connected to other amplifier structures. At the same time the transmitter amplifier 110, the transmitter antenna 112, the receiver antenna 116 and the receiver amplifier 118 are not necessary.

[0080] If the sensors 922A, 922B include active elements 6A to 6I, 218 and/or the amplifier, then the operating voltage of the active elements 6A to 6I, 218 and/or the amplifier 504 can be fed from the central processing unit 932.

[0081] FIG. 11 further shows positioning means 934A, 934B for positioning the transfer conductor film 924A, 924B. The positioning means 934A, 934B can be implemented for instance with the double layer structure of the garment, in which the transfer conductor film 924A, 924B is set between the two texture layers of the garment, which are sown together at the sides thereof in such a manner that a channel is formed between the texture layers. Hooks can also be used as the positioning means 934A, 934B. In an embodiment the transfer conductor films 924A, 924B include arched forms, in which case the stretching strain placed thereon is divided equally.

[0082] Although the invention has above been described with reference to the example shown in the accompanying

drawings it is apparent that the invention is not restricted thereto but can be amended in various ways within the scope of the accompanying claims.

What is claimed is:

1. A sensor system for indicating an electrocardiogram from the surface of the user's skin, the sensor system being configured to be connected to a user-specific heart rate monitor, wherein the sensor system comprises at least one flexible film structure comprising:

a first insulation layer and at least one electric conductor layer formed on top of the first insulation layer and comprising an electrode area, which is configured to establish an electric contact with the surface of the user's skin and to generate as output an electric signal proportional to a momentary value of the electrocardiogram.

2. The sensor system as claimed in claim 1, wherein the film structure comprises a second insulation layer such that the electric conductor layer is formed between the first insulation layer and the second insulation layer, and the second insulation layer comprises an opening, through which the electrode area establishes an electric contact with the surface of the user's skin.

3. The sensor system as claimed in claim 1, wherein the electrode area comprises several electrodes connected together with a first impedance connection, the electrodes being configured to establish an electric contact with the surface of the skin and to generate as output an electric signal proportional to the value of the electrocardiogram.

4. The sensor system as claimed in claim 1, wherein the electric conductor layer further comprises a protective area surrounding the electrode area at the film structure level, the protective area being configured to establish an electric contact with the surface of the skin and to protect the sensor system from static electricity.

5. The sensor system as claimed in claim 4, wherein the protective area comprises protective electrodes connected together with a second impedance connection, the protective electrodes being configured to establish an electric contact with the surface of the skin and to protect the sensor system from static electricity.

6. The sensor system as claimed in claim 4, wherein the protective area is connected to the electrode area with a third impedance connection, where the impedance of the third impedance connection exceeds the impedance of the first impedance connection.

7. The sensor system as claimed in claim 4, wherein the sensor system also comprises an insulation zone located between the electrode area and the protective area at the film structure level and the insulation zone is arranged to be at least partly in mechanical contact with the surface of the skin when used.

8. The sensor system as claimed in claim 1, wherein the sensor system comprises:

at least one transfer conductor film in order to establish an electric contact between the electric conductor layer and the central processing unit of the heart rate monitor or between the electric conductor layer and the transmitter unit of the heart rate monitor, and the transfer conductor film is connected to the electric conductor layer and comprises:

a first transfer conductor insulation layer,

a second transfer conductor insulation layer and

at least one electric transfer conductor layer, which is closed between the first transfer conductor insulation layer and the second transfer conductor insulation layer, and the electric transfer conductor layer comprises at least one insulated transfer input.

9. The sensor system as claimed in claim 1, wherein the sensor system further comprises at least one preamplifier connected to the electrode area in order to amplify the electric signal generated in the electrode area.

10. A garment, wherein the garment comprises a sensor system integrated into the garment for indicating an electrocardiogram from the surface of the user's skin, and the sensor system is configured to be connected to a user-specific heart rate monitor and comprises at least one flexible film structure including:

a first insulation layer and

at least one electric conductor layer formed on top of the first insulation layer and comprising an electrode area, which is configured to establish an electric contact with the surface of the skin and to generate as output an electric signal proportional to a momentary value of the electrocardiogram.

11. The garment as claimed in claim 10, wherein the garment comprises at least one contact element in order to establish an electric contact from the electric conductor layer on the surface of the user's skin.

12. The garment as claimed in claim 10, wherein the electrode area comprises several electrodes connected together with a first impedance connection, the electrodes being configured to generate as output an electric signal proportional to the value of the electrocardiogram, and

at least one contact element is connected to at least one electrode.

13. The garment as claimed in claim 10, wherein the electric conductor layer also comprises a protective area surrounding the electrode area at the film structure level, the protective area being configured to establish an electric contact with the surface of the skin and to protect the sensor system from static electricity.

14. The garment as claimed in claim 11, wherein, the electric conductor layer comprises a protective area surrounding the electrode area at the film structure level, the protective area being configured to establish an electric contact with the surface of the skin and to protect the sensor system from static electricity the protective area comprising protective electrodes connected together with a third impedance connection, and the protective electrodes are configured to protect the sensor system from static electricity, and

at least one contact element is connected to at least one protective electrode.

15. The garment as claimed in claim 13, wherein the protective area is connected to the electrode area with a third impedance connection, where the impedance of the third impedance connection exceeds the impedance of the first impedance connection.

16. The garment as claimed in claim 13, wherein the garment further comprises an insulation zone located between the electrode area and the protective area at the film structure level and the insulation zone is arranged to be at least partly in mechanical contact with the surface of the skin when used.

17. The garment as claimed in claim 10, wherein the garment comprises a pressing structure integrated into the garment for pressing at least one contact element against the user's skin.

18. The garment as claimed in claim 10, wherein the sensor system comprises:

at least one transfer conductor film in order to establish an electric contact between the electric conductor layer and the central processing unit of the heart rate monitor or between the electric conductor layer and the transmitter unit of the heart rate monitor, and the transfer conductor film is connected to the electric conductor layer and comprises:

a first transfer conductor insulation layer,

a second transfer conductor insulation layer and

at least one electric transfer conductor layer, which is closed between the first transfer conductor insulation layer and the second transfer conductor insulation layer, the electric transfer conductor layer comprising at least one insulated transfer input, and that the garment comprises positioning means for positioning the transfer conductor film.

19. The garment as claimed in claim 10, wherein the sensor system further comprises at least one preamplifier connected to the electrode area in order to amplify the electric signal generated in the electrode area.

20. A user-specific heart rate monitor, wherein the heart rate monitor comprises a sensor system for indicating an electrocardiogram from the surface of the user's skin, the sensor system comprising at least one flexible film structure, which comprises:

a first insulation layer and

at least one electric conductor layer formed on top of the first insulation layer and comprising an electrode area, which is configured to establish an electric contact with

the surface of the user's skin and to generate as output an electric signal proportional to a momentary value of the electrocardiogram.

21. The user-specific heart rate monitor as claimed in claim 20, wherein the electrode area comprises several electrodes connected together with a first impedance connection, the electrodes being configured to establish an electric contact with the surface of the skin and to generate as output an electric signal proportional to the value of the electrocardiogram.

22. The user-specific heart rate monitor as claimed in claim 20, wherein the electric conductor layer further comprises a protective area surrounding the electrode area at the film structure level, the protective area being configured to establish an electric contact with the surface of the skin and to protect the sensor system from static electricity.

23. The user-specific heart rate monitor as claimed in claim 20, wherein the user-specific heart rate monitor comprises:

at least one transfer conductor film in order to establish an electric contact between the electric conductor layer and the central processing unit of the heart rate monitor or between the electric conductor layer and the transmitter unit of the heart rate monitor, and the transfer conductor film is connected to the electric conductor layer and comprises:

a first transfer conductor insulation layer,

a second transfer conductor insulation layer and

at least one electric transfer conductor layer, which is closed between the first transfer conductor insulation layer and the second transfer conductor insulation layer, and the electric transfer conductor layer comprises at least one insulated transfer input.

\* \* \* \* \*