

AFFIDAVIT OF NATHANIEL E FRANK-WHITE

1. I am a Records Request Processor at the Internet Archive. I make this declaration of my own personal knowledge.
2. The Internet Archive is a website that provides access to a digital library of Internet sites and other cultural artifacts in digital form. Like a paper library, we provide free access to researchers, historians, scholars, and the general public. The Internet Archive has partnered with and receives support from various institutions, including the Library of Congress.
3. The Internet Archive has created a service known as the Wayback Machine. The Wayback Machine makes it possible to browse more than 450 billion pages stored in the Internet Archive's web archive. Visitors to the Wayback Machine can search archives by URL (i.e., a website address). If archived records for a URL are available, the visitor will be presented with a display of available dates. The visitor may select one of those dates, and begin browsing an archived version of the Web. Links on archived files in the Wayback Machine point to other archived files (whether HTML pages or other file types), if any are found for the URL indicated by a given link. For instance, the Wayback Machine is designed such that when a visitor clicks on a hyperlink on an archived page that points to another URL, the visitor will be served the archived file found for the hyperlink's URL with the closest available date to the initial file containing the hyperlink.
4. The archived data made viewable and browsable by the Wayback Machine is obtained by use of web archiving software that automatically stores copies of files available via the Internet, each file preserved as it existed at a particular point in time.
5. The Internet Archive assigns a URL on its site to the archived files in the format `http://web.archive.org/web/[Year in yyyy][Month in mm][Day in dd][Time code in hh:mm:ss]/[Archived URL]` aka an "extended URL". Thus, the extended URL `http://web.archive.org/web/19970126045828/http://www.archive.org/` would be the URL for the record of the Internet Archive home page HTML file (`http://www.archive.org/`) archived on January 26, 1997 at 4:58 a.m. and 28 seconds (1997/01/26 at 04:58:28). The date indicated by an extended URL applies to a preserved instance of a file for a given URL, but not necessarily to any other files linked therein. Thus, in the case of a page constituted by a primary HTML file and other separate files (e.g., files with images, audio, multimedia, design elements, or other embedded content) linked within that primary HTML file, the primary HTML file and the other files will each have their own respective extended URLs and may not have been archived on the same dates.
6. Attached hereto as Exhibit A are true and accurate copies of screenshots of the Internet Archive's records of the archived files for the URLs and the dates specified in the attached coversheet of each printout.



7. I declare under penalty of perjury that the foregoing is true and correct.

DATE: 07/05/2023 _____

Nathaniel Frank-White

Nathaniel E Frank-White

Document Notarized using a Live Audio-Video Connection



Please see attached
All Purpose
Jurat form
for additional
Notary Events



EXHIBIT A







HOME ABOUT COXREELS CONTACT US FIND A DISTRIBUTOR

CURRENT QUOTE (0)

Search by Keyword(s) or Model

REEL SELECTOR

PRODUCTS

INDUSTRIES

NEW RELEASES

LITERATURE

KNOWLEDGE CENTER

REQUEST A QUOTE

HOME INDUSTRIES PETROLEUM



T Series (Spring Driven)

Click to see offering



SP Series (Spring Driven)

Click to see offering



SD Series (Spring Driven)

Click to see offering



DEF & Fuel Reels (Spring Driven)

Click to see offering



EZ-T Series (EZ-Coil®)

Click to see offering



EZ-SD Series (EZ-Coil®)

Click to see offering



DEF & Fuel Reels (EZ-Coil®)

Click to see offering

4425 Series (Hand Crank)





1125 Series (Hand Crank)

► [Click to see offering](#)



1125 Series (Motorized)

► [Click to see offering](#)



USA Made, Quality & Support

We take great pride in designing, building and supplying the world's finest reels made right here in the U.S.A.



2 Year Warranty

Coxreels proudly stands behind our reels as they are built to last!

PRODUCTS

[Spring Driven](#)

[EZ-Coll®](#)

[Hand Crank](#)

[Motor Driven](#)

[Spring Driven & EZ-Coll® Accessories](#)

[Hand Crank & Motor Driven Accessories](#)

INDUSTRIES

[NEW RELEASES](#)

[LITERATURE](#)

[KNOWLEDGE CENTER](#)

[ABOUT COXREELS](#)

REQUEST A QUOTE

[FIND A DISTRIBUTOR](#)

[CONTACT US](#)

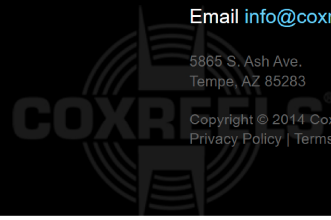
Toll Free [800-269-7335](#)

Fax [800-229-7335](#)

Email info@coxreels.com

5885 S. Ash Ave.
Tempe, AZ 85283

Copyright © 2014 Coxreels
[Privacy Policy](#) | [Terms & Conditions](#)







HOME ABOUT COXREELS CONTACT US FIND A DISTRIBUTOR

CURRENT QUOTE (0)

Search by Keyword(s) or Model

REEL SELECTOR

PRODUCTS

INDUSTRIES

NEW RELEASES

LITERATURE

KNOWLEDGE CENTER

REQUEST A QUOTE

HOME > PRODUCTS > HAND-CRANK > 1125-SERIES

1125 SERIES



COXREELS 1125 Series hand crank and motorized hose reels have the features demanded by industry professionals. The industry preferred design features a sturdy one piece all welded "A" frame base, low profile outlet riser and open drum slot design provides a non-crimping, flat smooth hose wrap.

SWIVEL

- External fluid path with machined from solid brass 90° full-flow NPT swivel inlet (Nickel plated steel swivel on 1" models)
- Swivel Seals: NITRILE (AFLAS on 1" models)

DESIGN & STRUCTURE

- All welded steel "A" frame construction for superior reel structure
- Exclusive low profile outlet riser & open drum slot design for flat smooth hose wrap
- Permanently lubricated self-aligning pillow block bearings for trouble-free & smooth rotation
- Adjustable tension brake to prevent "free-wheeling" during operation
- Long-handled locking pin to secure reel from rotation during transport or storage

RETRACTION

Choice of:

- Solid steel direct hand crank with smooth round handle
- Reliable bevel gear hand crank with removable handle for compact storage (model with suffix -C)

SIGNATURE FEATURES

- Professional grade heavy duty steel construction
- Durable proprietary CPC™ powder coat finish
- CNC robotically spun and ribbed discs with rolled edges provide strength, safety, and durability
- Industry leading 2 year manufacturer's limited warranty
- Made in the U.S.A. – Sold & Supported Worldwide

POSSIBLE FIELDS OF APPLICATION

- Industrial Plant & Ground Maintenance
- Fire Suppression
- Farming
- Construction Sites
- Landscaping
- Pest & Weed Control
- Golf Course Maintenance
- Air Compressor
- Washdown
- High-Flow Watering
- Hydro Seeding
- Pressure Washing
- Agricultural Spraying
- Chemical Fluid Transfer

MODELS

ACCESSORIES

APPLICATION SHOTS

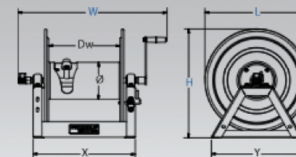
VIDEOS

TECHNICAL DOCUMENTS


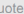
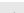
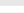
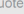
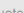

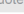


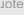
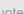
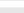
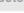


Product manual - [DOWNLOAD](#)

Exploded drawings - [DOWNLOAD](#)



Click "Add to Quote" to view compatible accessories

| REEL | | | CAPACITY | | | OPT. CAPACITY | | | PSI | SIZE INDEX | | | Add to Quote  |
|--------------|-----|------|----------|---------|-----|---------------|--------|------|------|--------------------|---------|---------|--|
| MODEL | LBS | HOSE | I.D. | O.D. | FT. | I.D. | O.D. | FT. | | W | H | L | |
| | | | | | | | | | | Overall Dimensions | | | |
| 1125-4-100 | 36 | N | 1/2" | 7/8" | 100 | 3/8" | 3/4" | 140' | 3000 | 19-1/2" | 18-3/4" | 17-5/8" | Add to Quote  |
| 1125-4-200 | 39 | N | 1/2" | 7/8" | 200 | 3/8" | 3/4" | 300' | 3000 | 25-1/2" | 18-3/4" | 17-5/8" | Add to Quote  |
| 1125-4-325 | 48 | N | 1/2" | 7/8" | 325 | 3/8" | 3/4" | 450' | 3000 | 31-1/2" | 18-3/4" | 17-5/8" | Add to Quote  |
| 1125-4-450 | 52 | N | 1/2" | 7/8" | 450 | 3/8" | 3/4" | 625' | 3000 | 37-1/2" | 18-3/4" | 17-5/8" | Add to Quote  |
| 1125-4-500 | 58 | N | 1/2" | 7/8" | 500 | 3/8" | 3/4" | 700' | 3000 | 41-1/2" | 18-3/4" | 17-5/8" | Add to Quote  |
| 1125-5-50 | 38 | N | 3/4" | 1-1/4" | 50 | 1/2" | 7/8" | 100' | 3000 | 20-3/4" | 18-3/4" | 17-5/8" | Add to Quote  |
| 1125-5-100 | 42 | N | 3/4" | 1-1/4" | 100 | 1/2" | 7/8" | 200' | 3000 | 26-3/4" | 18-3/4" | 17-5/8" | Add to Quote  |
| 1125-5-175 | 50 | N | 3/4" | 1-1/4" | 175 | 1/2" | 7/8" | 325' | 3000 | 32-3/4" | 18-3/4" | 17-5/8" | Add to Quote  |
| 1125-5-200 | 55 | N | 3/4" | 1-1/4" | 200 | 1/2" | 7/8" | 450' | 3000 | 38-3/4" | 18-3/4" | 17-5/8" | Add to Quote  |
| 1125-5-250 | 59 | N | 3/4" | 1-1/4" | 250 | 1/2" | 7/8" | 500' | 3000 | 42-3/4" | 18-3/4" | 17-5/8" | Add to Quote  |
| 1125-6-35 | 50 | N | 1" | 1-7/16" | 35 | 3/4" | 1-1/4" | 50' | 3000 | 26" | 18-1/2" | 17-5/8" | Add to Quote  |
| 1125-6-50 | 55 | N | 1" | 1-7/16" | 50 | 3/4" | 1-1/4" | 75' | 3000 | 32" | 18-1/2" | 17-5/8" | Add to Quote  |
| 1125-6-75 | 62 | N | 1" | 1-7/16" | 75 | 3/4" | 1-1/4" | 120' | 3000 | 38-1/2" | 18-1/2" | 17-5/8" | Add to Quote  |
| 1125-6-100 | 69 | N | 1" | 1-7/16" | 100 | 3/4" | 1-1/4" | 150' | 3000 | 44-1/2" | 18-1/2" | 17-5/8" | Add to Quote  |
| 1125-4-100-C | 39 | N | 1/2" | 7/8" | 100 | 3/8" | 3/4" | 140' | 3000 | 19-1/2" | 18-3/4" | 17-5/8" | Add to Quote  |
| 1125-4-200-C | 42 | N | 1/2" | 7/8" | 200 | 3/8" | 3/4" | 300' | 3000 | 25-1/2" | 18-3/4" | 17-5/8" | Add to Quote  |



| | | | | | | | | | | | | | |
|--------------|----|---|------|--------|-----|------|------|------|------|---------|---------|---------|------------------------------|
| 1125-4-325-C | 51 | N | 1/2" | 7/8" | 325 | 3/8" | 3/4" | 450' | 3000 | 31-1/2" | 18-3/4" | 17-5/8" | Add to Quote |
| 1125-4-450-C | 55 | N | 1/2" | 7/8" | 450 | 3/8" | 3/4" | 625' | 3000 | 37-1/2" | 18-3/4" | 17-5/8" | Add to Quote |
| 1125-4-500-C | 61 | N | 1/2" | 7/8" | 500 | 3/8" | 3/4" | 700' | 3000 | 41-1/2" | 18-3/4" | 17-5/8" | Add to Quote |
| 1125-5-50-C | 41 | N | 3/4" | 1-1/4" | 50 | 1/2" | 7/8" | 100' | 3000 | 20-3/4" | 18-3/4" | 17-5/8" | Add to Quote |
| 1125-5-100-C | 45 | N | 3/4" | 1-1/4" | 100 | 1/2" | 7/8" | 200' | 3000 | 26-3/4" | 18-3/4" | 17-5/8" | Add to Quote |
| 1125-5-175-C | 53 | N | 3/4" | 1-1/4" | 175 | 1/2" | 7/8" | 325' | 3000 | 32-3/4" | 18-3/4" | 17-5/8" | Add to Quote |
| 1125-5-200-C | 58 | N | 3/4" | 1-1/4" | 200 | 1/2" | 7/8" | 450' | 3000 | 38-3/4" | 18-3/4" | 17-5/8" | Add to Quote |
| 1125-5-250-C | 62 | N | 3/4" | 1-1/4" | 250 | 1/2" | 7/8" | 500' | 3000 | 42-3/4" | 18-3/4" | 17-5/8" | Add to Quote |

► See **Motorized** offering



USA Made, Quality & Support

We take great pride in designing, building and supplying the world's finest reels made right here in the U.S.A.



2 Year Warranty

Coxreels proudly stands behind our reels as they are built to last!

PRODUCTS

[Spring Driven](#)

[EZ-Coll®](#)

[Hand Crank](#)

[Motor Driven](#)

[Spring Driven & EZ-Coll® Accessories](#)

[Hand Crank & Motor Driven Accessories](#)

INDUSTRIES

[NEW RELEASES](#)

[LITERATURE](#)

[KNOWLEDGE CENTER](#)

[ABOUT COXREELS](#)

REQUEST A QUOTE

[FIND A DISTRIBUTOR](#)

[CONTACT US](#)

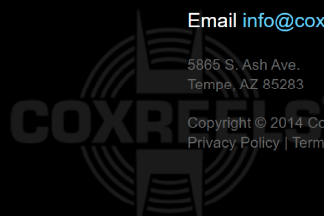
Toll Free **800-269-7335**

Fax **800-229-7335**

Email info@coxreels.com

5885 S. Ash Ave.
Tempe, AZ 85283

Copyright © 2014 Coxreels
[Privacy Policy](#) | [Terms & Conditions](#)



<https://web.archive.org/web/20140426025724/http://www.coxreels.com/products/hand-crank>





HOME ABOUT COXREELS CONTACT US FIND A DISTRIBUTOR

CURRENT QUOTE (0)

Search by Keyword(s) or Model

REEL SELECTOR

PRODUCTS

INDUSTRIES

NEW RELEASES

LITERATURE

KNOWLEDGE CENTER

REQUEST A QUOTE

HOME PRODUCTS HAND-CRANK

LARGE CAPACITY INDUSTRIAL GRADE REELS FOR LONG HOSE LENGTHS

HAND CRANK HOSE REELS

- Heavy duty solid spun discs with rolled edges - NOT STAMPED
- Low profile riser & open drum slot for smooth, even hose wraps
- Industrial grade brass, machined from solid, full flow swivel with external fluid path for ease of seal maintenance
- Permanently sealed pillow block bearings for easy rotation
- One piece all CNC robotically welded steel "A" frame construction
- High quality steel construction with a durable CPC powder coat finish



SHOW ALL

HOSE

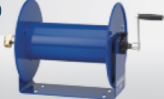
ELECTRICAL

WELDING

SPECIALTY

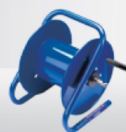
100 SERIES

I.D.: 1/4"-3/4"
Length: Up to 800'
Max PSI: 4,000



CM & DM SERIES

I.D.: 1/4"-1/2"
Length: Up to 315'
Max PSI: 4,000



SM SERIES

I.D.: 1/4"-1/2"
Length: Up to 350'
Max PSI: 4,500



112Y SERIES

I.D.: 3/8"-1/2"
Length: Up to 700'
Max PSI: 3,000



1125 SERIES

I.D.: 3/8"-1"
Length: Up to 700'
Max PSI: 3,000



HP1125 SERIES

I.D.: 3/8"-3/4"
Length: Up to 700'
Max PSI: 5,000



1175 SERIES

I.D.: 3/4"-1"
Length: Up to 300'
Max PSI: 3,000



1185 SERIES

I.D.: 1-1/4"-1-1/2"
Length: Up to 325'
Max PSI: 600



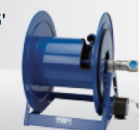
1185-BUXX SERIES

I.D.: 1-1/4"-1-1/2"
Length: Up to 325'
Max PSI: 3,000



1195 SERIES

I.D.: 1-1/2"-2"
Length: Up to 175'
Max PSI: 600



1275 SERIES

I.D.: 3/8"-1"
Length: Up to 2/300'
Max PSI: 3,000



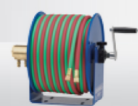
1125PCL SERIES

AWG: 12/3 SO & 10/3 SO
Length: 250'
Volts: 600
AMPS: Up to 45



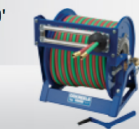
100W SERIES

I.D.: 1/4"
Length: Up to 200'
Max PSI: 200'



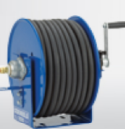
1275W-C SERIES

I.D.: 3/8"
Length: Up to 350'
Max PSI: 200



100WCL SERIES

Cable: 2, 1, 1/0 & 2/0
Length: Up to 165'



1125WCL SERIES

Cable: 2, 1, 1/0 & 2/0
Length: Up to 600'



SS 100, 1125 & 1175 SERIES

I.D.: 3/8"-1"
Length: Up to 100'
Max PSI: 4,000



Storage SERIES

I.D.: 1/4"-3"
Length: Up to 23,250'





USA Made, Quality & Support

We take great pride in designing, building and supplying the world's finest reels made right here in the U.S.A.



2 Year Warranty

Coxreels proudly stands behind our reels as they are built to last!

PRODUCTS

[Spring Driven](#)

[EZ-Coil®](#)

[Hand Crank](#)

[Motor Driven](#)

[Spring Driven & EZ-Coil® Accessories](#)

[Hand Crank & Motor Driven Accessories](#)

INDUSTRIES

[NEW RELEASES](#)

[LITERATURE](#)

[KNOWLEDGE CENTER](#)

[ABOUT COXREELS](#)

[REQUEST A QUOTE](#)

[FIND A DISTRIBUTOR](#)

[CONTACT US](#)

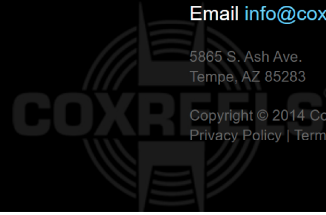
Toll Free [800-269-7335](tel:800-269-7335)

Fax [800-229-7335](tel:800-229-7335)

Email info@coxreels.com

5885 S. Ash Ave.
Tempe, AZ 85283

Copyright © 2014 Coxreels
[Privacy Policy](#) | [Terms & Conditions](#)



<https://web.archive.org/web/20140412144551/http://www.coxreels.com/>





HOME ABOUT COXREELS CONTACT US FIND A DISTRIBUTOR

CURRENT QUOTE (0)

Search by Keyword(s) or Model

REEL SELECTOR

PRODUCTS

INDUSTRIES

NEW RELEASES

LITERATURE

KNOWLEDGE CENTER

REQUEST A QUOTE

HOME

SELF-RETRACTING HEAVY DUTY INDUSTRIAL GRADE REELS

SPRING DRIVEN HOSE REELS

- Hose I.D. from 1/4" to 1-1/2"
- Pressures to 5,000 PSI
- Lengths to 125 feet
- Durable proprietary CPC™ powder coat
- Detachable roller guides
- Steel, aluminum or stainless steel construction
- Full-flow swivel inlets
- Adjustable rubber hose stop
- Factory tuned & matched cartridge style spring motor
- Multi-position locking ratchet
- Side mount reels
- Adjustable guide arm

LEARN MORE



CUSTOMER SERVICE



TESTIMONIALS



EXPOS
& EXHIBITIONS



HOW TO ORDER

COXREELS® manufactures heavy duty professional grade hose, cord, and cable reels of the highest quality. Our comprehensive selection of reels includes spring retractable, hand crank and motorized hose, cord and cable reels and our patented EZ-Coil® Safety Series spring retractable reels with controlled rewind. We are the worldwide leader in the reel industry and have been serving customers in residential, commercial and industrial settings since 1923. Our engineering capabilities and manufacturing processes allow us to design and build top quality products for any conceivable application where reels are needed.



USA Made, Quality & Support

We take great pride in designing, building and supplying the world's finest reels made right here in the U.S.A.



2 Year Warranty

Coxreels proudly stands behind our reels as they are built to last!

PRODUCTS

Spring Driven
EZ-Coil®
Hand Crank
Motor Driven
Spring Driven & EZ-Coil® Accessories
Hand Crank & Motor Driven Accessories

INDUSTRIES

NEW RELEASES
LITERATURE
KNOWLEDGE CENTER
ABOUT COXREELS

REQUEST A QUOTE

FIND A DISTRIBUTOR
CONTACT US

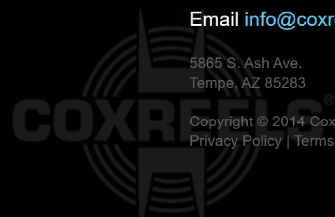
Toll Free 800-269-7335

Fax 800-229-7335

Email info@coxreels.com

5865 S. Ash Ave.
Tempe, AZ 85283

Copyright © 2014 Coxreels
Privacy Policy | Terms & Conditions



JURAT ATTACHMENT

A notary public or other officer completing this certificate verifies only the identity of the individual who signed the document to which this certificate is attached, and not the truthfulness, accuracy, or validity of that document.

STATE OF Texas }

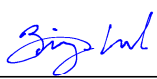
COUNTY OF Tarrant }

The foregoing instrument was subscribed and sworn before me this date of
07/05/2023, by Nathaniel Frank-White

This notarial act was an online notarization.



(Notary Seal)

Notary's Signature 

Registration No.: 133645929

Commission Expiration Date: March 15, 2026

