



US 20050110730A1

(19) **United States**(12) **Patent Application Publication** (10) **Pub. No.: US 2005/0110730 A1****Kim et al.**(43) **Pub. Date: May 26, 2005**(54) **LIGHT EMITTING DISPLAY AND DRIVING METHOD THEREOF****Publication Classification**(51) **Int. Cl.⁷** **G09G 3/32**(52) **U.S. Cl.** **345/82**(76) **Inventors:** **Yang-Wan Kim**, Suwon-si (KR);
Oh-Kyong Kwon, Seoul (KR);
Sang-Moo Choi, Suwon-si (KR);
Choon-Yul Oh, Suwon-si (KR);
Kyung-Do Kim, Suwon-si (KR)

Correspondence Address:

CHRISTIE, PARKER & HALE, LLP
PO BOX 7068
PASADENA, CA 91109-7068 (US)(21) **Appl. No.:** **10/963,389**(22) **Filed:** **Oct. 11, 2004**(30) **Foreign Application Priority Data**

Nov. 24, 2003 (KR) 10-2003-0083573

Nov. 27, 2003 (KR) 10-2003-0085067

(57) **ABSTRACT**

A light emitting display including data lines for applying data voltages corresponding to video signals, scan lines for transmitting select signals, and pixel circuits. Each pixel circuit includes a light emitting element for emitting light, and a transistor including first to third electrodes, for controlling a current output to the third electrode according to a voltage between the first and second electrodes. Each pixel circuit also includes a first switch for diode-connecting the transistor, a capacitor having a first electrode coupled to the first electrode of the transistor, a second switch for applying a corresponding said data voltage to the second electrode of the transistor in response to a corresponding said select signal from a corresponding said scan line, and a third switch for substantially electrically decoupling the second electrode of the capacitor from a power supply voltage source.

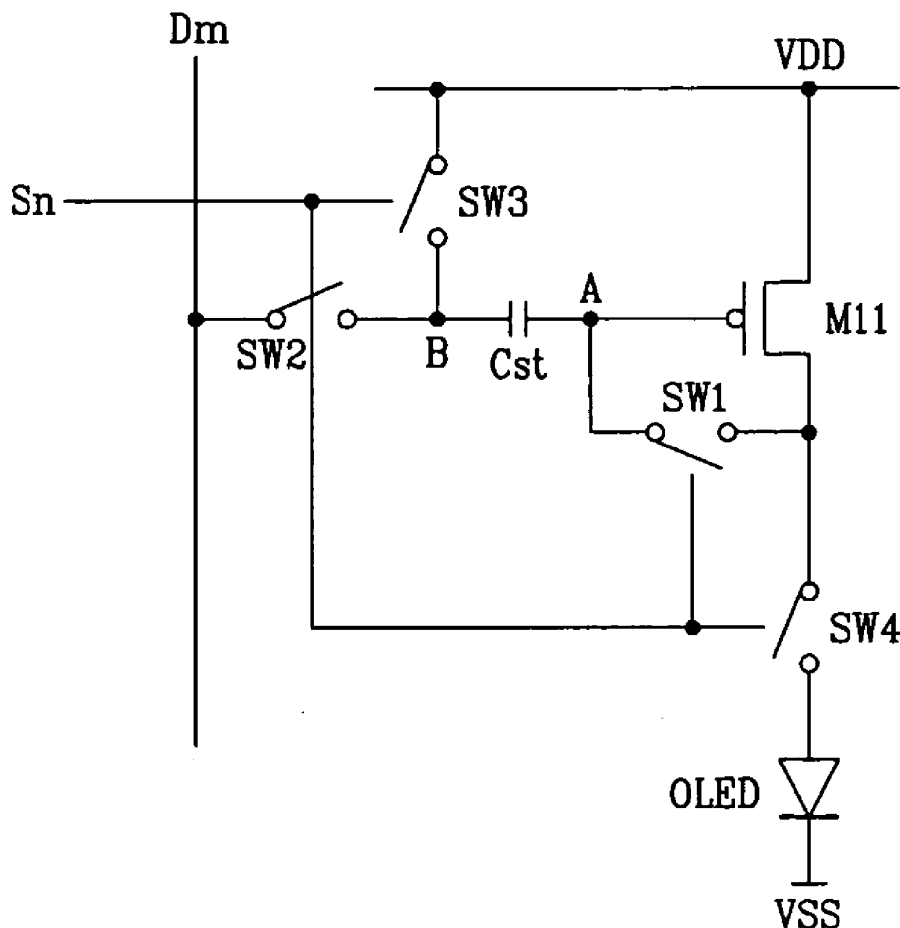


FIG.1

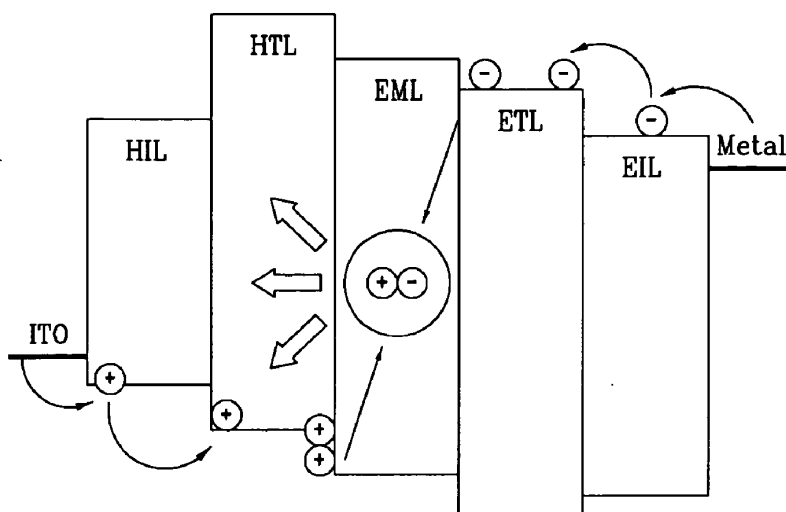


FIG.2

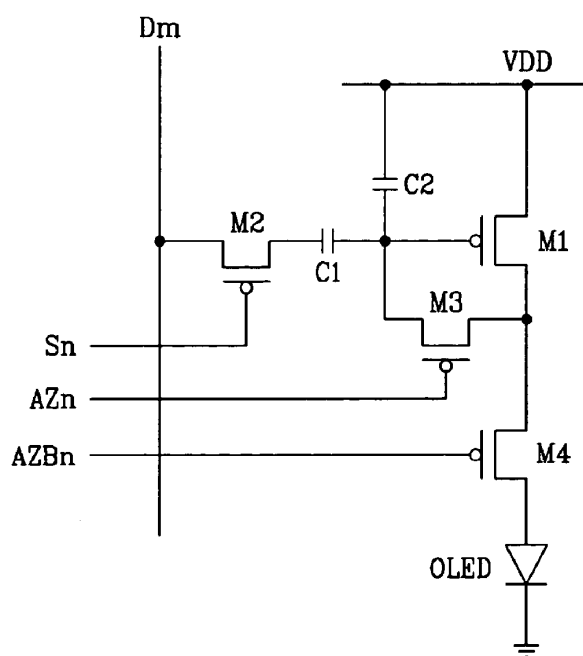


FIG.3

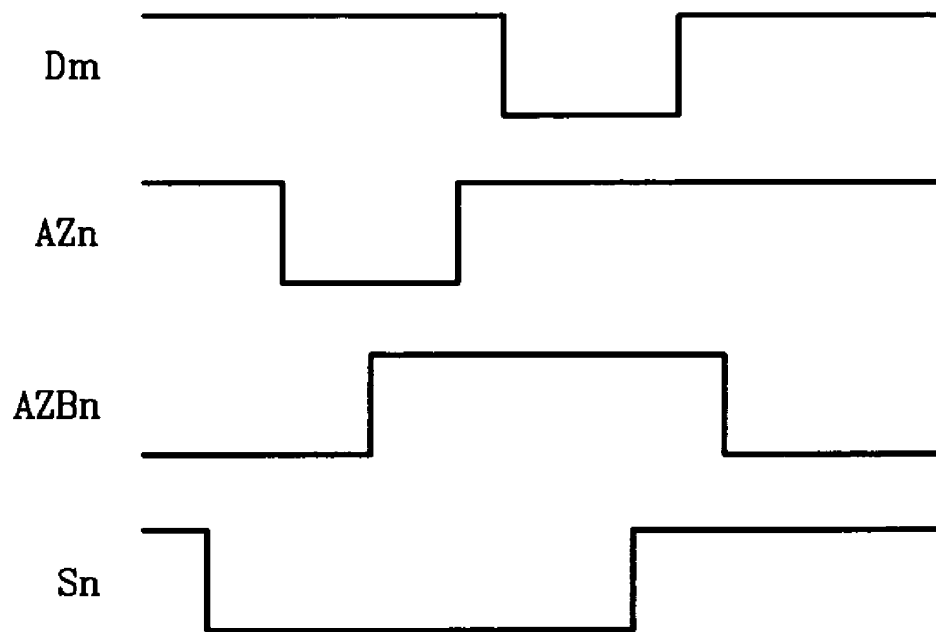


FIG.4

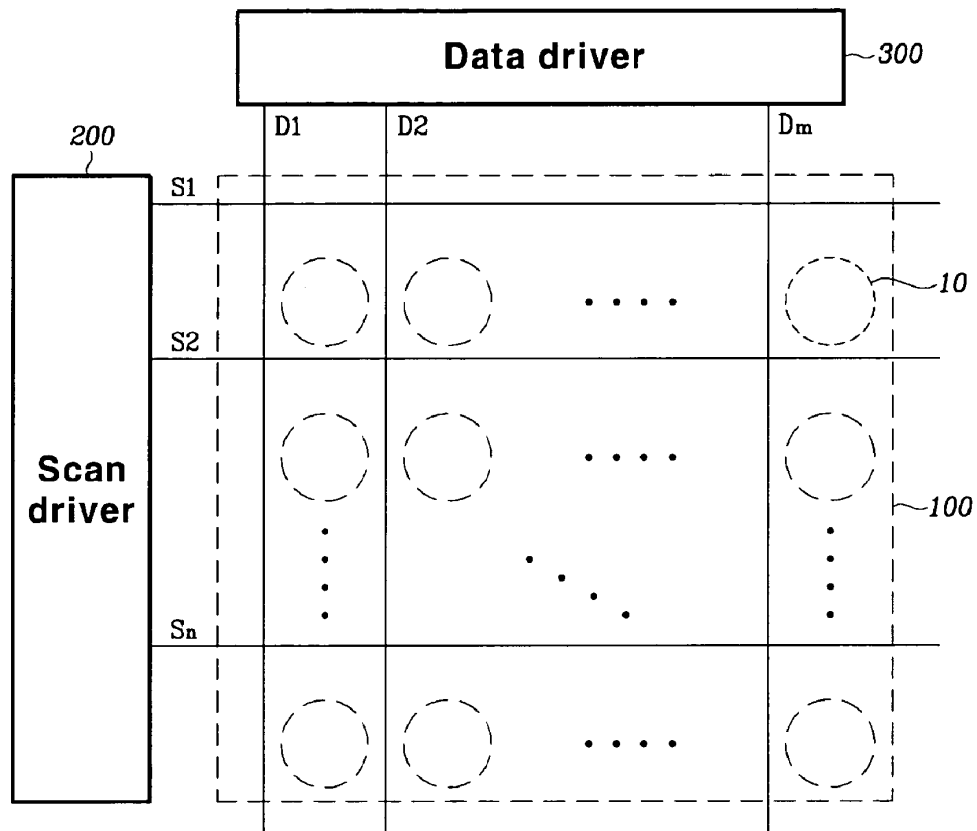


FIG.5

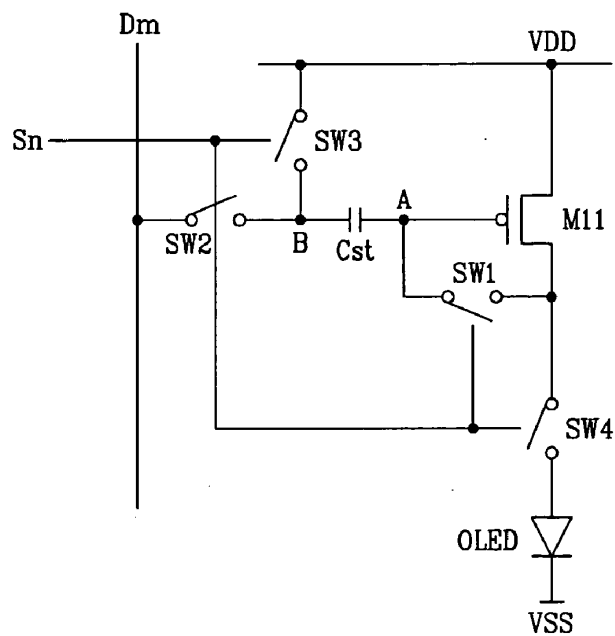


FIG.6

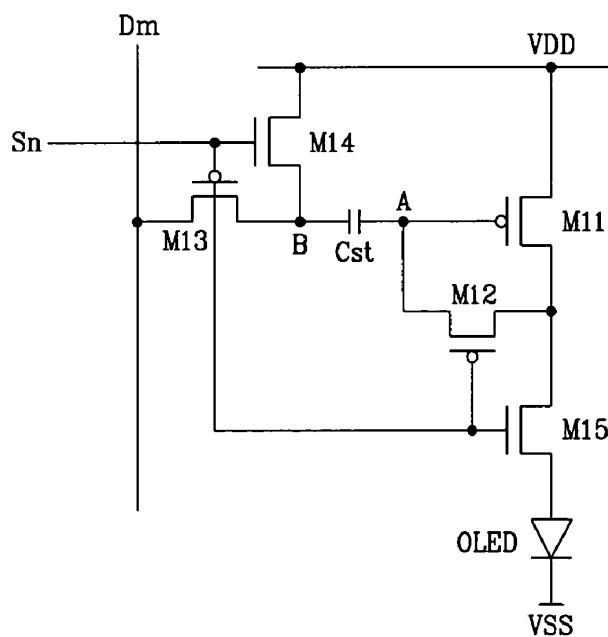


FIG.7

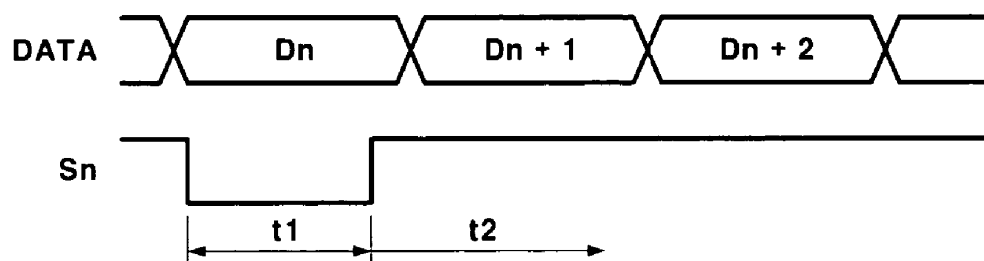


FIG.8

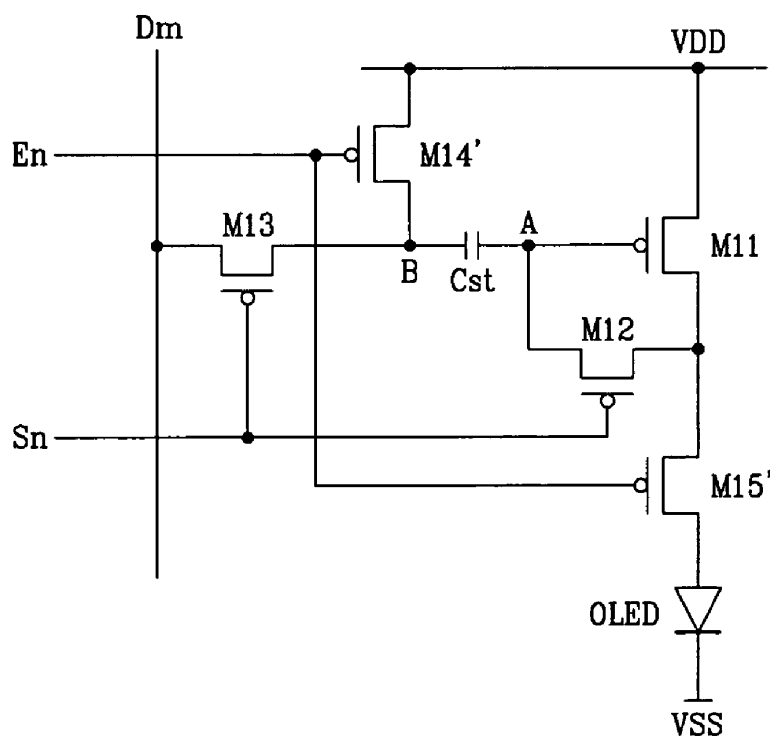


FIG.9

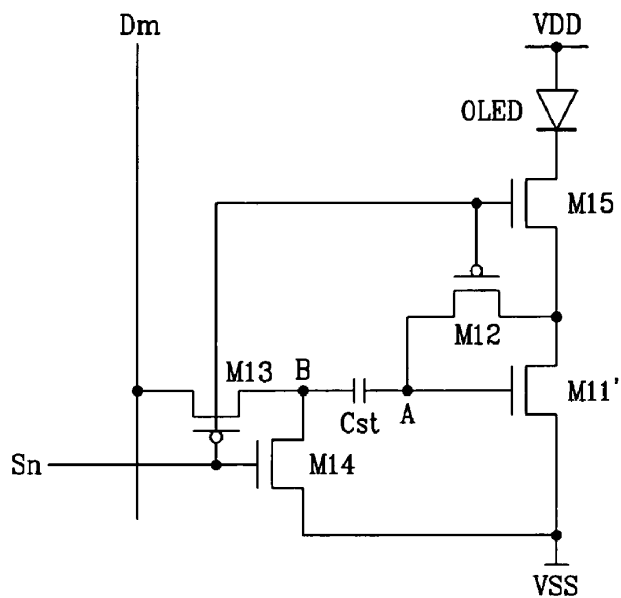
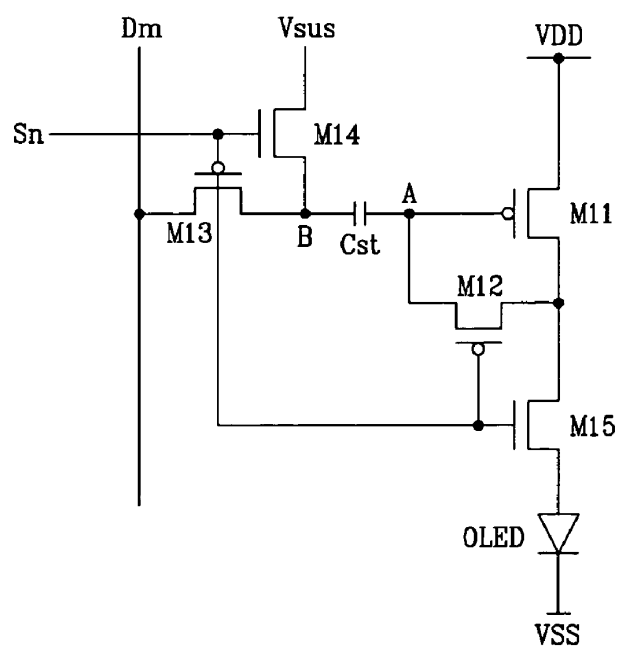


FIG.10



LIGHT EMITTING DISPLAY AND DRIVING METHOD THEREOF

CROSS REFERENCE TO RELATED APPLICATION

[0001] This application claims priority to and the benefit of Korea Patent Application No. 10-2003-0083573 filed on Nov. 24, 2003 and Korea Patent Application No. 10-2003-0085067 filed on Nov. 27, 2003 in the Korean Intellectual Property Office, the entire contents of both of which are incorporated herein by reference.

BACKGROUND OF THE INVENTION

[0002] (a) Field of the Invention

[0003] The present invention relates to a light emitting display and a driving method thereof. More specifically, the present invention relates to an organic electroluminescent (EL) display.

[0004] (b) Description of the Related Art

[0005] In general, an organic EL display electrically excites a phosphorous organic compound to emit light, and it voltage- or current-drives N×M organic emitting cells to display images. As shown in FIG. 1, the organic emitting cell includes an anode (e.g., indium tin oxide (ITO)), an organic thin film, and a cathode layer (metal). The organic thin film has a multi-layer structure including an emitting layer (EML), an electron transport layer (ETL), and a hole transport layer (HTL) for maintaining balance between electrons and holes and improving emitting efficiencies. Further, the organic emitting cell includes an electron injecting layer (EIL) and a hole injecting layer (HIL).

[0006] Methods for driving the organic emitting cells include a passive matrix method, and an active matrix method using thin film transistors (TFTs) or metal-oxide semiconductor field-effect transistors (MOSFETs). In the passive matrix method, cathodes and anodes are arranged to cross (i.e., cross over or intersect) with each other, and lines are selectively driven. In the active matrix method, a TFT and a capacitor are coupled to each ITO pixel electrode to thereby maintain a predetermined voltage according to capacitance of the capacitor. The active matrix method is classified as a voltage programming method or a current programming method according to signal forms supplied for programming a voltage in the capacitor.

[0007] FIG. 2 shows a conventional pixel circuit of a voltage programming method for driving an organic EL element (OLED), and FIG. 3 shows a driving waveform diagram for driving the pixel circuit shown in FIG. 2.

[0008] As shown in FIG. 2, the conventional pixel circuit following the voltage programming method includes transistors M1, M2, M3, and M4, capacitors C1 and C2, and an OLED.

[0009] The transistor M1 controls the current flowing to a drain according to a voltage applied between a gate and a source, and the transistor M2 programs a data voltage to the capacitor C1 in response to a select signal from a scan line S_n. The transistor M3 diode-connects the transistor M1 in response to a select signal from a scan line AZ_n. The transistor M4 transmits the current of the transistor M1 to the OLED in response to a select signal from a scan line AZB_n.

[0010] The capacitor C1 is coupled between the gate of the transistor M1 and a drain of the transistor M2, and the capacitor C2 is coupled between the gate and the source of the transistor M1.

[0011] An operation of the conventional pixel circuit will be described with reference to FIG. 3.

[0012] When the transistor M3 is turned on by the select signal from the scan line AZ_n, the transistor M1 is diode-connected, and a threshold voltage of the transistor M1 is stored in the capacitor C2.

[0013] When the transistor M3 is turned off and a data voltage is applied, a voltage that corresponds to a summation of a variation of the data voltage applied to the data line Dm and the threshold voltage of the driving transistor M1 is stored in the capacitor C2 because of a boosting operation by the capacitor C1. When the transistor M4 is turned on, a current corresponding to the data voltage flows to the OLED.

[0014] The conventional pixel circuit uses two capacitors C1 and C2 and transistors M3 and M4 to compensate for deviations of the threshold voltage of the transistor M1, but the pixel circuit and a driving circuit become complicated and an aperture ratio of the light emitting display is reduced since the conventional pixel circuit requires three different scan lines. Also, since the data is programmed after the deviation of the threshold voltage is compensated during a single pixel selecting time, it is difficult to apply the pixel circuit to a high-resolution panel because of a data charging problem.

SUMMARY OF THE INVENTION

[0015] In an exemplary embodiment of the present invention, a pixel circuit of a light emitting display is driven using a lesser number of signal lines.

[0016] In another exemplary embodiment of the present invention, a pixel circuit is simplified, thereby improving an aperture ratio of the light emitting display.

[0017] In still another exemplary embodiment of the present invention, a method for driving a light emitting display applicable to a high-resolution panel is provided.

[0018] In an aspect of the present invention, is provided a light emitting display including a plurality of data lines for applying data voltages corresponding to video signals, a plurality of scan lines for transmitting select signals, and a plurality of pixel circuits coupled to the scan lines and the data lines. Each said pixel circuit includes a light emitting element for emitting a light beam corresponding to a current, which is applied thereto, and a transistor including a first electrode, a second electrode coupled to a power supply voltage source, and a third electrode coupled to the light emitting element, for controlling the current output to the third electrode according to a voltage applied between the first and second electrodes. Each said pixel circuit also includes a first switch for diode-connecting the transistor in response to a first control signal, and a capacitor having a first electrode coupled to the first electrode of the transistor. A second switch applies a corresponding said data voltage to the second electrode of the capacitor in response to a corresponding said select signal from a corresponding said scan line. A third switch coupled between the second elec-

trode of the capacitor and the power supply voltage source substantially electrically decouples the second electrode of the capacitor from the power supply voltage source in response to a second control signal.

[0019] The first and second switches may include transistors of the same type of channel, and the first control signal may be the corresponding said select signal from the corresponding said scan line or another signal which is substantially the same as the corresponding said select signal.

[0020] The third switch may include a transistor having a channel type which is different from that of the first switch, and the second control signal may be the corresponding said select signal from the corresponding said scan line or another signal which is substantially the same as the corresponding said select signal.

[0021] The light emitting display may further include a fourth switch for substantially electrically decoupling the third electrode of the transistor from the light emitting element in response to a third control signal.

[0022] The fourth switch may include a transistor having a channel type different from that of the first switch, and the third control signal may be the corresponding said select signal from the corresponding said scan line or another signal which is substantially the same as the corresponding said select signal.

[0023] The fourth switch may include a transistor having a channel type which is the same as that of the third switch, and the third control signal may be the second control signal or another signal which is substantially the same as the second control signal.

[0024] The third and fourth switches may be turned on at substantially the same time, when the first and second switches are turned on at substantially the same time.

[0025] In another aspect of the present invention, is provided a display panel of a light emitting display including a plurality of data lines for applying data voltages corresponding to video signals, a plurality of scan lines for transmitting select signals, and a plurality of pixel circuits coupled to the data lines and the scan lines. Each said pixel circuit includes a light emitting element for emitting a light beam corresponding to a current, which is applied thereto, a transistor including a first electrode, a second electrode coupled to a power supply voltage source, and a third electrode coupled to the light emitting element, for controlling the current output to the third electrode according to a voltage applied between the first and second electrodes, and a capacitor having a first electrode coupled to the first electrode of the first transistor. Each said pixel also includes a switch for applying a corresponding said data voltage to the second electrode of the capacitor in response to a corresponding said select signal from a corresponding said scan line. Each said pixel circuit is operated in order of: a first period during which the corresponding said data voltage is applied to the second electrode of the capacitor by the corresponding said select signal from the corresponding said scan line, and the transistor is diode-connected; and a second period during which the second electrode of the capacitor is electrically coupled to the power supply voltage source, and the current, which is output by the transistor, is provided to the light emitting element.

[0026] In still another aspect of the present invention, is provided a method for driving a light emitting display including a plurality of data lines for applying data voltages corresponding to video signals, a plurality of scan lines for transmitting select signals, and a plurality of pixel circuits coupled to the scan lines and the data lines. Each said pixel circuit includes a transistor including a first electrode, a second electrode coupled to a power supply voltage source, and a third electrode, for outputting a current corresponding to a voltage applied between the first and second electrodes to the third electrode, a capacitor having a first electrode coupled to the first electrode of the transistor, and a light emitting element coupled to the third electrode of the transistor. The method includes: (a) applying a corresponding said data voltage to the second electrode of the capacitor in response to a corresponding said select signal; (b) applying a threshold voltage of the transistor between the first electrode of the capacitor and the second electrode of the transistor; and (c) electrically coupling the second electrode of the capacitor to the power supply voltage source in response to a first control signal.

BRIEF DESCRIPTION OF THE DRAWINGS

[0027] The accompanying drawings, together with the specification, illustrate exemplary embodiments of the present invention, and, together with the description, serve to explain the principles of the present invention:

[0028] FIG. 1 shows a conceptual diagram of an organic EL element;

[0029] FIG. 2 shows a conventional voltage programming method based pixel circuit;

[0030] FIG. 3 shows a driving waveform diagram for driving the pixel circuit shown in FIG. 2;

[0031] FIG. 4 shows a brief diagram of an active matrix display according to an exemplary embodiment of the present invention;

[0032] FIG. 5 shows a pixel circuit according to a first exemplary embodiment of the present invention;

[0033] FIG. 6 shows a detailed diagram of the pixel circuit shown in FIG. 5;

[0034] FIG. 7 shows a driving waveform diagram for driving the pixel circuit according to a first exemplary embodiment of the present invention;

[0035] FIG. 8 shows a pixel circuit according to a second exemplary embodiment of the present invention;

[0036] FIG. 9 shows a pixel circuit according to a third exemplary embodiment of the present invention; and

[0037] FIG. 10 shows a pixel circuit according to a fourth exemplary embodiment of the present invention.

DETAILED DESCRIPTION

[0038] In the following detailed description, only certain exemplary embodiments of the present invention are shown and described, simply by way of illustration. As those skilled in the art would realize, the described embodiments may be modified in various different ways, all without departing from the spirit or scope of the present invention. Accord-

ingly, the drawings and description are to be regarded as illustrative in nature, and not restrictive.

[0039] FIG. 4 shows a brief diagram of an active matrix display according to an exemplary embodiment of the present invention.

[0040] As shown, the active matrix display includes an organic EL display panel 100, a scan driver 200, and a data driver 300.

[0041] The organic EL display panel 100 includes a plurality of data lines D_1 to D_m arranged in the column direction, a plurality of scan lines S_1 to S_n arranged in the row direction, and a plurality of pixel circuits 10. The data lines D_1 to D_m transmit data signals that display video signals to the pixel circuits 10, and the scan lines S_1 to S_n transmit select signals to the pixel circuits 10. Each of the pixel circuits 10 is formed at a pixel region defined by two adjacent data lines D_1 to D_m and two adjacent scan lines S_1 to S_n .

[0042] The scan driver 200 sequentially applies the select signals to the scan lines S_1 to S_n , and the data driver 300 applies data voltages that correspond to the video signals to the data lines D_1 to D_m .

[0043] The scan driver 200 and/or the data driver 300 may be coupled to the display panel 100, or may be installed, in a chip format, in a tape carrier package (TCP) coupled to the display panel 100. Further, the scan driver 200 and/or the data driver 300 may be attached to the display panel 100, and installed, in a chip format, on a flexible printed circuit (FPC) or a film coupled to the display panel 100. Alternatively, the scan driver 200 and/or the data driver 300 may be installed on the glass substrate of the display panel, and further, the same may be substituted for the driving circuit formed in the same layers of the scan lines, the data lines, and TFTs on the glass substrate, or directly installed on the glass substrate.

[0044] Referring to FIGS. 5 to 7, one of the pixel circuits 10 of the organic EL display according to a first exemplary embodiment of the present invention will be described in detail.

[0045] FIG. 5 shows an equivalent circuit diagram of the pixel circuit according to the first exemplary embodiment of the present invention, FIG. 6 shows a detailed diagram of the pixel circuit shown in FIG. 5, and FIG. 7 shows a driving waveform diagram for driving the pixel circuit shown in FIG. 6. For ease of description, the pixel circuit coupled to the m^{th} data line D_m and the n^{th} scan line S_n is illustrated in FIGS. 5 and 6. It should be noted, however, that all of the other pixel circuits 10 in FIG. 4 have substantially the same configuration and operate in substantially the same manner.

[0046] As shown in FIG. 5, the pixel circuit 10 according to the first exemplary embodiment of the present invention includes a transistor M11, switches SW1, SW2, SW3 and SW4, a capacitor C_{st} , and an OLED. The transistor M11 is illustrated as a transistor having a P-type channel in FIG. 5. In other embodiments, the transistor M11 may be replaced with a transistor having an N-type channel, as those skilled in the art would realize.

[0047] The transistor M11 is coupled between a power supply voltage source V_{DD} and the OLED, and controls the current flowing to the OLED. In detail, a source of the

transistor M11 is coupled to the power supply voltage source V_{DD} , and a drain is coupled to an anode of the OLED through the switch SW4. A cathode of the OLED can be grounded, and coupled to a voltage source having a voltage level which is lower than that of the power supply voltage source V_{DD} . Also, a gate of the transistor M11 is coupled to a first electrode A of the capacitor C_{st} , and a second electrode B of the capacitor C_{st} is coupled to the switch SW2.

[0048] The switch SW2 allows a voltage of the data line D_m to be applied to the second electrode B of the capacitor C_{st} in response to the select signal from the scan line S_n . The switch SW1 diode-connects the transistor M11 in response to the select signal from the scan line S_n . The switch SW3 is coupled between the power supply voltage source V_{DD} and the second electrode B of the capacitor C_{st} , and substantially electrically decouples the second electrode B of the capacitor C_{st} from the power supply voltage source V_{DD} in response to the select signal from the scan line S_n . The switch SW4 is coupled between the transistor M11 and the OLED, and substantially electrically decouples the transistor M11 from the OLED in response to the select signal from the scan line S_n .

[0049] Respective control signals are applied to the switches SW1 to SW4 according to the exemplary embodiment of the present invention. Further, the switches SW1 to SW4 are controlled by a single select signal by realizing the switches SW1 and SW2 and the switches SW3 and SW4 with transistors having different types of channels.

[0050] In detail, when attempting to program the data voltage in the case that the select signal is low-level, it is desirable to realize the switches SW1 and SW2 with the transistors M12 and M13 of the P-type channel, and the switches SW3 and SW4 with transistors M14 and M15 of the N-type channel, as shown in FIG. 6.

[0051] Also, the transistors M11 to M15 may be realized with any suitable active elements that have a first electrode, a second electrode, and a third electrode, and they control the current flowing to the third electrode from the second electrode according to the voltage applied between the first and second electrodes.

[0052] Referring to FIG. 7, the operation of the pixel circuit according to the first exemplary embodiment of the present invention will be described.

[0053] As shown, in a period t1, the select signal becomes low-level to turn on the transistor M12, and the transistor M11 is diode-connected by the transistor M12. Accordingly, the threshold voltage of the transistor M11 is applied between the gate and the source of the transistor M11. Also, the voltage that corresponds to a summation of the power supply voltage V_{DD} and the threshold voltage of the transistor M11 is applied to the gate of the transistor, that is, the first electrode A of the capacitor C_{st} , since the source of the transistor M11 is coupled to the power supply voltage V_{DD} . Further, the transistor M13 is turned on, and the data voltage from the data line D_m is applied to the second electrode B of the capacitor C_{st} .

[0054] In a period t2, the transistors M12 and M13 are turned off by a high-level select signal. The transistor M14 is turned on to apply the power supply voltage V_{DD} to the second electrode B of the capacitor C_{st} . In this instance, the voltage at the first electrode A of the capacitor C_{st} is

increased by a voltage variation of the second electrode B since the voltage at the second electrode B of the capacitor C_{st} is changed from the data voltage to the power supply voltage V_{DD} , and no current path is formed in the pixel circuit. In other words, the voltage V_A applied to the first electrode A of the capacitor C_{st} is given as Equation 1.

$$V_A = V_{DD} + V_{TH1} + \Delta V_B \quad \text{Equation 1}$$

[0055] where V_{TH1} is a threshold voltage of the transistor M11, and ΔV_B is a voltage variation of the second electrode B of the capacitor C_{st} and is given in Equation 2.

$$\Delta V_B = V_{DD} - V_{DATA} \quad \text{Equation 2}$$

[0056] The transistor M15 is turned on, and the current flowing to the transistor M11 is applied to the OLED to emit a light beam in the period t2. In this instance, the current applied to the OLED is given as Equation 3.

$$\begin{aligned} I_{OLED} &= \frac{\beta}{2} (V_{GS1} - V_{TH1})^2 \\ &= \frac{\beta}{2} ((V_{DD} + V_{TH1} + \Delta V_B) - V_{DD} - V_{TH1})^2 \\ &= \frac{\beta}{2} (\Delta V_B)^2 = \frac{\beta}{2} (V_{DD} - V_{DATA})^2 \end{aligned} \quad \text{Equation 3}$$

[0057] where β is a constant, and V_{GS1} is a voltage between the gate and the source of the transistor M11.

[0058] As can be seen from Equation 3, since the current flowing to the OLED is not influenced by the threshold voltage V_{TH1} , a deviation of the threshold voltage of the driving transistor M11 provided between the pixel circuits is compensated.

[0059] Therefore, the aperture ratio is increased and the driving circuit is configured more simply since the deviation of the threshold voltage V_{TH1} of the driving transistor M11 is compensated by a single scan line S_n .

[0060] The switching transistors M12, M13, M14, and M15 are controlled by a single select signal in the first exemplary embodiment. As shown in FIG. 8, a select signal from the scan line S_n is applied to the transistors M12 and M13, and a select signal from the scan line E_n is applied to transistors M14' and M15' in the second exemplary embodiment. The transistors M12, M13, M14', M15', the capacitor C_{st} and the OLED are interconnected in substantially the same manner as the corresponding components of FIG. 6. In this case, the transistors M12, M13, M14' and M15' are realized with transistors having the same type of channel (i.e., P-channel), and a polarity of the select signal applied to the transistors M12 and M13 is different from that of the select signal applied to the transistors M14 and M15.

[0061] As shown in FIG. 9, a driving transistor M11' is realized with a transistor having the N-type channel according to a third exemplary embodiment of the present invention. In this instance, a drain of the transistor M11' is coupled to the cathode of the OLED through the transistor M15, and the anode of the OLED is coupled to the power supply voltage source V_{DD} . Also, the sources of the transistors M11' and M14 are coupled to the power supply voltage source V_{SS} . The transistors M12, M13, M15 and the capacitor C_{st} are interconnected together in substantially the same manner as the corresponding components of FIG. 6.

[0062] FIG. 10 shows a pixel circuit according to a fourth exemplary embodiment of the present invention.

[0063] Since the drain of the transistor M14 in the pixel circuit according to the fourth exemplary embodiment is coupled to a compensation voltage V_{sus} , a deviation of the threshold voltages of the driving transistors and a deviation of the power supply voltages V_{DD} between the pixel circuits are compensated.

[0064] In detail, when the select signal from the scan line S_n becomes low-level, the transistors M12 and M13 are turned on, a data voltage is applied to the second electrode B of the capacitor C_{st} , and a voltage that corresponds to a summation of the power supply voltage V_{DD} and the threshold voltage of the transistor M11 is applied to the first electrode A thereof.

[0065] When the select signal from the scan line S_n becomes high-level, the transistor M14 is turned on, and the compensation voltage V_{sus} is applied to the second electrode B of the capacitor C_{st} . In this instance, the voltage at the first electrode A of the capacitor C_{st} is increased by a voltage variation of the second electrode B, and a voltage variation ΔV_B of the second electrode B of the capacitor C_{st} is given as Equation 4.

$$\Delta V_B = V_{sus} - V_{DATA} \quad \text{Equation 4}$$

[0066] Also, the transistor M15 is turned on, and the current flowing to the driving transistor M11 is applied to the OLED to thus emit light. The current I_{OLED} applied to the OLED is given in Equation 5.

$$\begin{aligned} I_{OLED} &= \frac{\beta}{2} (V_{GS1} - V_{TH1})^2 \\ &= \frac{\beta}{2} ((V_{DD} + V_{TH1} + \Delta V_B) - V_{DD} - V_{TH1})^2 \\ &= \frac{\beta}{2} (\Delta V_B)^2 = \frac{\beta}{2} (V_{sus} - V_{DATA})^2 \end{aligned} \quad \text{Equation 5}$$

[0067] As can be seen from Equation 5, the current I_{OLED} flowing to the OLED is not influenced by the threshold voltage V_{TH1} of the transistor M11 and the power supply voltage V_{DD} .

[0068] The current flowing to the OLED is influenced by the compensation voltage V_{sus} in the fourth exemplary embodiment, but since no current path is formed through the compensation voltage V_{sus} in the pixel circuit, substantially no voltage drop is generated when supplying the compensation voltage V_{sus} . Hence, substantially the same compensation voltage V_{sus} is applied to all the pixels, and the desired current flows to the OLED by controlling the data voltage.

[0069] FIG. 10 shows a case where a select signal from the scan line S_n is applied to all the switching transistors M12 to M15. However, different control signals may be applied to the respective transistors in other exemplary embodiments. Also, the same first control signal may be applied to the transistors M12 and M13, and the same second control signal may be applied to the transistors M14 and M15. In other embodiments, the driving transistor M11 can be replaced with a transistor having the N-type channel.

[0070] The switching transistors M14 and M15 are realized by using MOS transistors in the first to fourth exem-

plary embodiments. Further, other switches for switching both electrodes in response to the applied select signals can also be applied, and the channel types of the switching transistors M14 and M15 can be modified depending on the exemplary embodiments, which are obvious to a person skilled in the art.

[0071] A light emitting display with a compensated deviation of the threshold voltage of the driving transistor is provided with a lesser number of signal lines.

[0072] Also, the aperture ratio of the light emitting display is improved by simplifying the driving circuits and the pixel circuits.

[0073] Further, a method for driving a light emitting display applicable to a high resolution panel is provided.

[0074] While this invention has been described in connection certain exemplary embodiments, it is to be understood that the invention is not limited to the disclosed embodiments, but, on the contrary, is intended to cover various modifications and equivalent arrangements included within the spirit and scope of the appended claims, and equivalents thereof.

What is claimed is:

1. A light emitting display including a plurality of data lines for applying data voltages corresponding to video signals, a plurality of scan lines for transmitting select signals, and a plurality of pixel circuits coupled to the scan lines and the data lines, each said pixel circuit comprising:

- a light emitting element for emitting a light beam corresponding to a current, which is applied thereto;
- a transistor including a first electrode, a second electrode coupled to a power supply voltage source, and a third electrode coupled to the light emitting element, for controlling the current output to the third electrode according to a voltage applied between the first and second electrodes;
- a first switch for diode-connecting the transistor in response to a first control signal;
- a capacitor having a first electrode coupled to the first electrode of the transistor;
- a second switch for applying a corresponding said data voltage to the second electrode of the capacitor in response to a corresponding said select signal from a corresponding said scan line; and
- a third switch coupled between the second electrode of the capacitor and the power supply voltage source, for substantially electrically decoupling the second electrode of the capacitor from the power supply voltage source in response to a second control signal.

2. The light emitting display of claim 1, wherein the first and second switches include transistors of the same type of channel, and the first control signal is the corresponding said select signal from the corresponding said scan line or another signal which is substantially the same as the corresponding said select signal.

3. The light emitting display of claim 1, wherein the third switch includes a transistor having a channel type which is different from that of the first switch, and the second control signal is the corresponding said select signal from the

corresponding said scan line or another signal which is substantially the same as the corresponding said select signal.

4. The light emitting display of claim 1, further comprising a fourth switch for substantially electrically decoupling the third electrode of the transistor from the light emitting element in response to a third control signal.

5. The light emitting display of claim 4, wherein the fourth switch includes a transistor having a channel type different from that of the first switch, and the third control signal is the corresponding said select signal from the corresponding said scan line or another signal which is substantially the same as the corresponding said select signal.

6. The light emitting display of claim 4, wherein the fourth switch includes a transistor having a channel type which is the same as that of the third switch, and the third control signal is the second control signal or another signal which is substantially the same as the second control signal.

7. The light emitting display of claim 1, wherein the third and fourth switches are turned on at substantially the same time, when the first and second switches are turned on at substantially the same time.

8. The light emitting display of claim 1, wherein the transistor has a P-type channel, the first electrode is a gate electrode, the second electrode is a source electrode, and the third electrode is a drain electrode.

9. The light emitting display of claim 1, wherein the transistor has an N-type channel, the first electrode is a gate electrode, the second electrode is a drain electrode, and the third electrode is a source electrode.

10. The light emitting display of claim 1, wherein an anode of the light emitting element is coupled to the third electrode of the transistor, and a cathode of the light emitting element is coupled to a second power supply voltage source.

11. The light emitting display of claim 10, wherein a voltage level of the second power supply voltage source is lower than that of the data voltage.

12. A display panel of a light emitting display including a plurality of data lines for applying data voltages corresponding to video signals, a plurality of scan lines for transmitting select signals, and a plurality of pixel circuits coupled to the data lines and the scan lines, each said pixel circuit comprising:

- a light emitting element for emitting a light beam corresponding to a current, which is applied thereto;
- a transistor including a first electrode, a second electrode coupled to a power supply voltage source, and a third electrode coupled to the light emitting element, for controlling the current output to the third electrode according to a voltage applied between the first and second electrodes;
- a capacitor having a first electrode coupled to the first electrode of the first transistor; and
- a switch for applying a corresponding said data voltage to the second electrode of the capacitor in response to a corresponding said select signal from a corresponding said scan line,

wherein each said pixel circuit is operated in an order of:

- a first period during which the corresponding said data voltage is applied to the second electrode of the capaci-

tor by the corresponding said select signal from the corresponding said scan line, and the transistor is diode-connected; and

a second period during which the second electrode of the capacitor is electrically coupled to the power supply voltage source, and the current, which is outputted by the transistor, is provided to the light emitting element.

13. The display panel of claim 12, wherein the light emitting element and the third electrode of the transistor are substantially electrically decoupled during the first period.

14. The display panel of claim 12, wherein an anode of the light emitting element is coupled to the third electrode of the transistor, and a cathode of the light emitting element is coupled to a second power supply voltage source.

15. The display panel of claim 14, wherein a voltage level of the second power supply voltage source is lower than that of the corresponding said data voltage.

16. A method for driving a light emitting display including a plurality of data lines for applying data voltages corresponding to video signals, a plurality of scan lines for transmitting select signals, and a plurality of pixel circuits coupled to the scan lines and the data lines, each said pixel circuit comprising: a transistor including a first electrode, a second electrode coupled to a power supply voltage source, and a third electrode, for outputting a current corresponding to a voltage applied between the first and second electrodes to the third electrode; a capacitor having a first electrode coupled to the first electrode of the transistor; and a light emitting element coupled to the third electrode of the transistor, the method comprising:

(a) applying a corresponding said data voltage to the second electrode of the capacitor in response to a corresponding said select signal;

(b) applying a threshold voltage of the transistor between the first electrode of the capacitor and the second electrode of the transistor; and

(c) electrically coupling the second electrode of the capacitor to the power supply voltage source in response to a first control signal.

17. The method of claim 16, wherein the third electrode of the transistor and the light emitting element are substantially electrically decoupled while performing step (a).

18. The method of claim 16, wherein the first control signal is a corresponding said select signal from a corresponding scan line or a signal which is substantially the same as the corresponding said select signal.

19. The method of claim 16, wherein the transistor has a P-type channel, the first electrode is a gate electrode, the second electrode is a source electrode, and the third electrode is a drain electrode.

20. The method of claim 16, wherein the transistor has an N-type channel, the first electrode is a gate electrode, the second electrode is a drain electrode, and the third electrode is a source electrode.

21. The method of claim 16, wherein an anode of the light emitting element is coupled to the third electrode of the transistor, and a cathode of the light emitting element is coupled to a second power supply voltage source.

22. The method of claim 21, wherein a voltage level of the second power supply voltage source is lower than that of the corresponding said data voltage.

* * * * *