

COMPUTER PROGRAM, METHOD, AND SYSTEM FOR MANAGING MULTIPLE DATA RECORDING DEVICES

BACKGROUND

1. FIELD

[0001] Embodiments of the present invention relate to recording device managing apparatus. More particularly, embodiments of the current invention relate to computer programs, methods, apparatus, and systems for managing multiple recording devices by syncing the recording devices, creating time stamps and metadata corresponding to data recordings taken by the recording devices, and transmitting the time stamps and metadata to the recording devices for corroborating the recordings.

2. RELATED ART

[0002] Recording device management systems are used to coordinate recording devices to capture multiple recordings of an event. For example, a control board can be used to start multiple video cameras to record video data from multiple vantage points. However, the control board simply receives a single input such as a button press and transmits it to multiple recording devices. The management system does little, if anything, to react to inputs from the electronic devices or to make decisions based on statuses of the electronic devices. Also, current management systems do not corroborate the recorded data by correlating data taken from distinct devices.

[0003] The law enforcement field is growing more dependent on recording devices such as cameras and audio recorders to preserve evidence. Officers now use dash-cams, hidden cameras, and personal recording devices worn by the officers to

obtain crucial video and audio data recordings. However, managing these devices and corroborating the recorded data remains difficult and problematic. For example, recording devices often use different cues to start recording, or require manual operation, which can result in the devices failing to record at a crucial time. Manually managing recording devices can be distracting to the officer, which is particularly undesirable in dangerous situations. Another problem is that in a court of law, evidence is bolstered if corroborated or otherwise forensically verifiable, but multiple recordings may be difficult to corroborate based solely on their content. Additionally, correlating and organizing evidence is time consuming and increases the workload of often understaffed law enforcement departments.

SUMMARY

[0004] Embodiments of the present invention solve the above-mentioned problems by providing a computer program, method, apparatus, and system for managing multiple data recording devices.

[0005] One embodiment of the invention is an intermediate recording device managing apparatus (“recording device manager”) for use in a multiple recording device system. The recording device manager comprises a controller including a receiver for receiving from a first recording device a first communication signal that the first recording device has started recording, and a transmitter for transmitting to a second recording device a second communication signal instructing the second recording device to begin recording. The recording device manager thus insures that multiple recording devices record an event.

[0006] Another embodiment of the invention is an intermediate recording device managing apparatus for use in a multiple recording device system, wherein the apparatus comprises an internal clock and a controller. The controller obtains time readings from the internal clock and creates time stamps therefrom. The controller transmits the time stamps to synced recording devices for corroborating recordings.

[0007] This summary is provided to introduce a selection of concepts in a simplified form that are further described below in the detailed description. This summary is not intended to identify key features or essential features of the claimed subject matter, nor is it intended to be used to limit the scope of the claimed subject matter. Other aspects and advantages of the current invention will be apparent from the following detailed description of the embodiments and the accompanying drawing figures.

BRIEF DESCRIPTION OF THE DRAWING FIGURES

[0008] Embodiments of the current invention are described in detail below with reference to the attached drawing figures, wherein:

[0009] FIG. 1 is a schematic plan view of a multiple recording device management system including an intermediate recording device managing apparatus, a vehicle video recording device mounted in a police vehicle, and a personal video recording device carried by an officer, in accordance with an embodiment of the invention;

[0010] FIG. 2 is a perspective view of the intermediate recording device managing apparatus of FIG. 1 constructed in accordance with an embodiment of the invention;

[0011] FIG. 3 is a settings configuration interface for configuring options and parameters pertaining to managing the recording devices in accordance with an embodiment of the invention;

[0012] FIG. 4 is a wireless and security configuration interface for choosing options and parameters pertaining to wireless setup and security precautions in accordance with an embodiment of the invention;

[0013] FIG. 5 is a device-syncing interface for syncing recording devices to the intermediate recording device managing apparatus in accordance with an embodiment of the invention; and

[0014] FIG. 6 is a settings configuration interface for configuring options and parameters pertaining to the recording devices in accordance with an embodiment of the invention.

[0015] The drawing figures do not limit the current invention to the specific embodiments disclosed and described herein. The drawings are not necessarily to scale, emphasis instead being placed upon clearly illustrating the principles of the invention.

DETAILED DESCRIPTION OF THE EMBODIMENTS

[0016] The following detailed description of the invention references the accompanying drawings that illustrate specific embodiments in which the invention can be practiced. The embodiments are intended to describe aspects of the invention in sufficient detail to enable those skilled in the art to practice the invention. Other embodiments can be utilized and changes can be made without departing from the scope of the current invention. The following detailed description is, therefore, not to be

taken in a limiting sense. The scope of the current invention is defined only by the appended claims, along with the full scope of equivalents to which such claims are entitled.

[0017] In this description, references to “one embodiment”, “an embodiment”, or “embodiments” mean that the feature or features being referred to are included in at least one embodiment of the technology. Separate references to “one embodiment”, “an embodiment”, or “embodiments” in this description do not necessarily refer to the same embodiment and are also not mutually exclusive unless so stated and/or except as will be readily apparent to those skilled in the art from the description. For example, a feature, structure, act, etc. described in one embodiment may also be included in other embodiments, but is not necessarily included. Thus, the current technology can include a variety of combinations and/or integrations of the embodiments described herein.

[0018] Turning to the figures, and particularly FIG. 1, a first embodiment of a multiple recording device management system 10 (hereinafter “management system 10”) is described, which includes an intermediate multiple recording device managing apparatus 12 (hereinafter “recording device manager” or “manager”), a vehicle recording device 14 mounted in a police vehicle 16 and communicatively coupled (i.e., synced) to the recording device manager 12, and a personal recording device 18 carried by a police officer 20 and wirelessly synced to the recording device manager 12. The recording device manager 12 is operable to detect when the vehicle recording device 14, personal recording device 18, or any other synced device in range has started recording and to broadcast or transmit a signal to any synced recording device

in range instructing recording by the respective device. The recording device manager 12 also may generate time stamps and unique serial numbers for a data recording, and create or collect metadata and transmit such time stamps, unique serial number, and metadata to the recording devices 14, 18 for corroborating the recorded data. For illustrative purposes, the management system 10 includes the vehicle recording device 14 and the personal recording device 18, but it will be understood that duplicate or additional devices, such as audio recorders, thermal imagers, security cameras, radios, seismic sensors, radar and LIDAR scanners, and chemical analyzers, can be synced to the recording device manager 12. Moreover, multiple personal recording devices 18 can be synced with the manager 12, as described below.

[0019] In embodiments of the present invention, the vehicle recording device 14 and personal recording device 18 are each operable to record data, including without limitation, audio and video data. Moreover, the recording devices 14, 18 are also operable to record or generate metadata associated with the recording, such that the data recorded by the devices 14, 18 includes the audio data, the video data, and/or the metadata associated with either or both of the audio and video data. Examples of metadata for an audio or video recording include a location (as determined by a GPS) where the data was recorded, a user who recorded the data or was otherwise associated with the recording device 14, 18 (e.g., an officer driving a police vehicle or an officer wearing the personal recording device 18), the time stamp and unique serial number described in detail below, a number of data-capture devices synced upon initiation of the data recording event, a trigger for the data recording event (i.e., what prompted data capture by the recording devices), etc. Thus, reference herein to

“recorded data” is intended to include audio data, video data, and any metadata associated with the audio and video data. Additionally, in embodiments where the recording device manager is synced with ancillary data-capture devices, such as a thermal imager or radar or LIDAR scanner, for example, such data (including any metadata) generated or otherwise captured by the ancillary devices also encompasses “recorded data.” For ease of reference, video or audio recorded data may be discussed herein for particular examples but should not otherwise be considered limiting of the types of recorded data.

[0020] An exemplary scenario of the management system 10 in use is now described for illustrative purposes. The management system 10 may be used by the police officer 20 to record video data during a traffic stop. The recording device manager 12 may be mounted near the vehicle recording device 14, such as on the windshield of the police vehicle 16. Alternatively, the recording device manager 12 may be mounted anywhere within the police vehicle 16 that allows for the recording device manager 12 to communicate (either via a wired or wireless connection) with the vehicle recording device 14 or a recording device manager (not shown). In exemplary embodiments, the vehicle recording device 14 is aimed forwards to record the traffic stop, and the personal recording device 18 is mounted to the police officer’s person or is otherwise carried by the police officer 20, such as on a lanyard.

[0021] As described in more detail below, the recording device manager 12 is communicatively coupled with at least one personal recording device 18 and is operable to instruct recording of data by the personal recording device 18. In other embodiments of the present invention, the recording device manager 12 may be communicatively

coupled with a plurality of personal recording devices 18 carried by a plurality of officers. The recording device manager 12 of embodiments of the present invention manages recording of multiple devices during, for example, a traffic stop by the police officer 20. As often occurs, the police officer 20 wearing the personal recording device 18 will exit the vehicle and approach a situation (such as a stopped car). Should the officer instruct recording by the personal recording device 18, or should the personal recording device 18 automatically begin recording in response to a triggering event, as described in more detail below, the recording device manager 12 receives a signal that the personal recording device 18 has begun recording. The recording device manager 12 then in turn instructs recording by the vehicle recording device 14.

[0022] The recording device manager 12 can also perform the converse of the above exemplary scenario. In particular, should the vehicle recording device 14 begin recording, either through manual instruction by the officer or in response to a triggering event, the recording device manager 12 will receive notification of same and instruct the personal recording device 18 to begin recording.

[0023] In embodiments where multiple personal recording devices 18 are synced with the recording device manager 12, the recording device manager will instruct recording by the multiple devices 18. As an example, if a first personal recording device 18 begins recording, such as in response to manual instruction by the officer or in response to a triggering event, a signal will be sent to the recording device manager 12. In turn, the recording device manager 12 will instruct recording by a second personal recording device 18 that is synced with the manager 12. It should be appreciated that

this scenario of the manager 12 instructing recording is for every device synced with the manager 12.

[0024] In alternative embodiments of the present invention, the personal recording device 18 may include a GPS, an RFID, or another type of location or identification feature or sensor (not shown) that informs the recording device manager 12 of the relational location of the personal recording device 18 to the recording device manager 12. Alternatively, the officer may carry on their person a GPS (such as housed within a mobile communications device), RFID, or other type of location or identification sensor. The recording device manager 12 is communicatively coupled with the location or identification sensor, such that the recording device manager can receive information and signals from the sensor. If the recording device manager 12 determines that the personal recording device is within a preset, maximum range of the vehicle 16, as signaled by the location or identification sensor, then the recording device manager 12 may be programmed to not instruct the personal recording device to begin recording upon the vehicle recording device recording. This may be desirable should the officer be sitting in the vehicle, and therefore, video and audio recordings by the personal recording device are unnecessary.

[0025] In yet further embodiments of the present invention, the recording device manager 12 may be programmed such that it instructs recording by the personal recording device when the personal recording device is a predetermined minimum distance away from the vehicle recording device 14 or recording device manager. For example, should the officer step away from the vehicle 16 a preset, minimum distance, the recording device manager 12 will note such and instruct recording by the personal

recording device and regardless of whether the vehicle recording device has begun recording. Such a feature may be desirable in situations where the officer is chasing a suspect or is otherwise separated a large distance from their vehicle.

[0026] It should be appreciated that the signal received by the recording device manager 12 and from one of the recording devices that such recording device has started recording may actually instead be a signal that such recording device is going to imminently begin recording (this is compared to the signal sent by the recording device manager 12 to the other recording device instructing recording by the other recording device and in response to the first recording device beginning recording). In particular, it may be that the signal sent by the recording device manager 12 and to the second recording device instructing the second recording device to begin recording, such signal being in response to the first recording device beginning recording, is actually a signal that the first recording device received an instruction to begin recording, such as manual activation by the officer, as opposed to a signal that the first recording device has actually started recording. Thus, the signal received by the manager 12 may not actually be a signal that the first device has begun recording, but rather a signal that the first device has been instructed to record or will be recording imminently (as within milliseconds).

[0027] As an example, the vehicle recording device 14 may receive an instruction by the officer to begin recording data, including without limitation, audio and video data. Receipt of this instruction by the vehicle recording device 14 causes a first signal to be sent to the recording device manager 12 that the vehicle recording device 14 has been instructed to record. In response to receipt of the first signal, the recording device

manager 12 then sends a second signal to the personal recording device 18 instructing such device 18 to begin recording. It should be appreciated that the first signal received by the recording device manager 12 may either include information indicating that the vehicle recording device 14 has already begun recording or has been instructed to record. Thus, reference to the first recording device recording encompasses the first recording device having actually begun recording, having been instructed to begin recording, or about to imminently begin recording.

[0028] In addition to instructing the vehicle recording device 14 to begin recording in the above exemplary scenario, the recording device manager 12 also generates time stamps and transmits them to the personal recording device 18 and the vehicle recording device 14. A time stamp is any information identifying the particular time of day (and, in some embodiments, the date) an item of data was recorded, such that the item of data is associated with the particular time via the time stamp. As such, the time stamp may be a sequence of characters identifying the time (either or both in human or computer-readable format). The time stamp may be encoded, and in embodiments, the time stamp may be incorporated or otherwise shown on any video image viewable by a user. The time stamp is transmitted to the recording devices 14, 18, each of which includes an internal clock independent of the internal clock of the recording device manager 12. Because the independent internal clocks of the recording devices 14, 18 are not necessarily synchronized and otherwise have different time settings for the clock (i.e., each clock of each device may record a different time for a particular point in time), the time stamp serves as a shared reference point for corroborating data points of the data recorded by the recording devices 14, 18.

[0029] In embodiments of the present invention, a unique serial number is generated and provided by the recording device manager 12 and to each of the recording devices 14, 18. For example, for a particular data recording event, such as a traffic stop, the recording device manager 12 generates a unique serial number for the data recording event. The manager 12 then assigns the unique serial number to the data recording event and transfers or otherwise provides the unique serial number to each of the data recording devices, such as the recording devices 14, 18. Thus, in embodiments, a unique serial number is generated each time a data recording is initiated. In embodiments, the unique serial number can be provided in addition to the above-referenced time stamp or in place of the time stamp. Upon receipt of the unique serial number from the recording device manager 12, the recording devices 14, 18 write the unique serial number and any information associated therewith as metadata to a metadata file associated with the data recording. In embodiments of the present invention, the same unique serial number generated by the manager 12 and associated with the data-capture event is sent to each of the recording devices 14, 18. However, in other embodiments, the manager 12 may generate different unique serial numbers for the data-capture event to send to each recording device 14, 18. The manager 12 may then link or otherwise associate the different unique serial numbers sent to each of the recording devices for the particular data-capture event.

[0030] The unique serial number serves to validate the time stamp as having been generated by a genuine and properly calibrated recording device manager 12. Additionally, use of the unique serial number and time stamp allow video recording software that manages the data recordings to link together or otherwise associate data

recordings having the same serial number and time stamp. Because recorded data is captured by disparate devices, use of the unique serial number assists in associating together the recorded data from each device. An officer or other user reviewing the recorded data will then know when a particular image or item of data obtained from a first recording device occurred and be able to correlate and corroborate such with images or items of data obtained from other recording devices.

[0031] In embodiments of the present invention, the time stamp and serial number are sent to the recording devices once, when the recording devices 14, 18 begin recording for the particular data recording event. The recording devices then respectively acknowledge, to the recording device manager 12, receipt of the time stamp and serial number. If the recording devices do not send their respective acknowledgement to the recording device manager, then the manager may send the time stamp and unique serial number to the recording devices again. In other embodiments of the present invention, such as for especially long data-capture events, the time stamp and unique serial number may be sent more than once, and or a new unique serial number may be generated. In some instances, there may be a brief break or pause in the data recording. In such an instance, the recording device manager may send another, different unique serial number to the recording devices. Alternatively, if a length of time for the break or pause is the same or less than a preset maximum time limit, the data captured after the break or pause may be associated with the same unique serial number as the data captured before the break or pause.

[0032] By beginning to record almost simultaneously as the personal recording device 18, the vehicle recording device 14 is operable to capture additional video and

audio data recordings of the situation encountered by the officer, including capturing from a different vantage point than the officer. The time stamp and serial number corresponding to the captured and recorded video and audio data recordings from the personal recording device 18 can be matched with the concurrent time stamp corresponding to the captured and recorded video and audio data recordings from the vehicle recording device 14 to link the recordings chronologically. Such is desirable to forensically establish the timing of certain events captured by the two devices 14, 18 and the relation of the recorded images and audio from the personal recording device to the recorded images and audio from the vehicle recording device.

[0033] In even further embodiments, the time stamp and serial number sent from the manager 12 and to each recording device may include metadata, such as an identification that the time stamp came from the manager 12, other recording devices to which the manager sent the same time stamp information, a date (if not already included in the time stamp), any triggering event (as described herein), etc.

[0034] In yet further embodiments, the time stamp may actually be created by the particular recording device, as opposed to the manager 12. In such a case, the manager sends the time reading to the recording device, and the recording device in turn creates the time stamp.

[0035] As can be appreciated, the feature of the recording device manager 12 managing the time stamps can also be used with other ancillary devices. For example, in the case of the manager 12 being synced with a LIDAR, the manager 12 can time stamp when an officer records a particular speed reading and send the time stamp to

the LIDAR. The speed reading can then be corroborated with pictures or video created by other recording devices.

[0036] In embodiments of the present invention, the signals transmitted and received by the recording device manager 12 may be responsive to a triggering event (also more simply known as a “trigger”). Examples of a triggering event may include, for example, turning on the vehicle's siren and/or signal lights, an accelerometer measurement outside a pre-established norm, a position of the vehicle and/or officer as measured by a GPS, a vehicle crash event or the police vehicle 16 attaining a threshold speed (e.g., 80 m.p.h.), etc. In embodiments, the recording device manager 12 may receive a signal from, for example, the vehicle recording device 16 indicative of a triggering event. In response to receipt of the signal, or based on a type of triggering event as evidenced by the signal, the recording device manager 12 may instruct recording by the personal recording device 18. As an exemplary scenario, the recording device manager may receive a signal identifying a triggering event of the police officer being more than twenty feet from the vehicle. Upon receipt of the signal, the recording device manager 12 sends a signal to the personal recording device 18 to instruct the device 18 to begin recording. It should be appreciated that other types of triggering events and exemplary scenarios can be employed.

[0037] As shown in FIGS. 1 and 2, the recording device manager 12 is generally portable and is approximately 1 inch thick, 3 inches wide, and 5 inches tall but can take another shape and can be much larger or smaller. The recording device manager 12 is a standalone device but can be incorporated into other devices, such as a police laptop,

a police radio, a recording device (including the vehicle recording device 14), or a mobile communications device.

[0038] The recording device manager 12 is permanently or removably mounted anywhere in the police vehicle 16 that is easy to reach, such as on the dashboard, center console, or windshield. Permanently mounting the vehicle recording device 14 helps to prevent assailants from stealing or breaking it. The recording device manager 12 can advantageously be oriented so that the police officer 20 can view its indicators (described below) from vantage points inside and outside of the police vehicle 16. Alternatively, the recording device manager 12 can be carried or worn by the police officer 20, such as on his utility belt or in his pocket.

[0039] Referring to FIG. 2, the recording device manager 12 includes a housing 22; first, second, and third indicator 24, 26, 28; a receiver 30 for receiving from either the vehicle recording device 14 or the personal recording device 18 information, including a signal, that such recording device has started recording; a transmitter 32 for transmitting a signal; a communication port 34 for communicatively connecting the recording device manager 12 to an external computing device; and a controller 36 for performing algorithms, managing data, and generating signals and receiving information indicative of triggering events. The recording device manager 12 may also include other controllers, circuitry, computer hardware, and software for performing algorithms, handling, managing, and storing data, and generating and interpreting signals. The recording device manager 12 further includes an internal clock 38 for generating time stamps to be transmitted to the recording devices 14, 18, as discussed above. Alternatively, time functions can be handled by a Global Navigation Positioning System.

The recording device manager 12 is connected to and receives power from a power source 40 described below.

[0040] The housing 22 protects the above electronic components from moisture, tampering, and forceful damage and can be made out of any durable material, such as plastic or metal. The housing 22 has rounded edges for aesthetics and ease of handling, and is formed from typical molding or casting processes. The housing 22 allows for the indicators 24, 26, 28 to be visible to the officer 20 and for the receiver 30 and port 34 to be connectable to the recording device 14 and external computers, respectively. The housing 22 is formed of a front and back operable to connect to each other to form a case and to be separated for maintenance or troubleshooting.

[0041] The indicators 24, 26, 28 are three light emitting diodes (LEDs), or alternatively, backlit cells, graphical displays, or analog indicators that communicate to the police officer 20 various statuses of the recording device manager 12 and recording devices 14, 18. The indicators 24, 26, 28 may use different indications for the various statuses depending on the recording devices (described below) synced to the recording device manager 12.

[0042] The first indicator 24 is red and illuminates when power is applied to the recording device manager 12 and is off when no power is applied thereto. The second indicator 26 is yellow and illuminates when the police vehicle ignition is on and slowly blinks a single pulse when the police vehicle ignition is off and the recording device manager 12 is in a low power standby. Alternatively, the second indicator 26 may illuminate when the vehicle recording device 14 is on and slowly blinks two pulses when the vehicle recording device 14 is off and the recording device manager 12 is in a low

power standby. The second indicator 26 blinks quickly when at least one of the recording devices 14, 18 is recording.

[0043] The third indicator 28 is green and illuminates when the recording device manager 12 is not synced to any personal recording device 18. The third indicator 28 blinks a long pulse followed by a number of short pulses indicating the number of personal recording devices 18 that are synced to the recording device manager 12.

[0044] The indicators 24, 26, 28 may also cooperatively communicate a status by, for example, displaying a “chasing” pattern indicating that the personal recording device 18 is booting or resetting. This helps to verify that all three indicators 24, 26, 28 are operational. Also, the indicators 24, 26, 28 can be temporarily disabled in a covert mode, wherein the indicators 24, 26, 28 do not illuminate at all, by pressing a button or flipping a switch on the recording device manager 12. The covert mode is desirable when police officers do not want to draw attention to themselves or their police vehicles. The indicators 24, 26, 28 can be easily toggled back to normal operating mode by pressing the button or flipping the switch again. The mode (covert or normal) is retained when the recording device manager 12 turns on or switches from a low power standby.

[0045] The controller 36 may comprise the receiver 30, the transmitter 32, the internal clock 38, the communication ports, and other related components in any combination. In embodiments of the present invention, the receiver 30 and the transmitter 32 may also collectively form a transceiver. The controller 36 may also include electronic circuitry, a processing element, a memory element, computer hardware, and computer software for illuminating indicators 24, 26, 28 based on system statuses, as described above, and for performing algorithms for managing the recording

devices 14, 18, as described below. The controller 36 is powered by the power source 40, also described below.

[0046] The receiver 30 is configured to receive a communication from either of the vehicle recording device 14 or the personal recording device 18 indicating that the respective device has started or stopped recording. The receiver 30 may be wireless and may include antennas, signal or data receiving circuits, and signal or data transmitting circuits. The receiver 30 may operate utilizing communication standards, such as cellular 2G, 3G, 4G, Bluetooth™, Wi-Fi, or combinations thereof. Alternatively, or in addition, the receiver 30 may be wired and may include connectors or couplers to receive metal conductor cables or connectors or optical fiber cables.

[0047] In embodiments of the present invention, the transmitter 32 is configured to transmit a signal to the personal recording device 18 or the vehicle recording device 14 instructing recording of the respective device. The transmitter 32 may be wireless and may include antennas, signal or data receiving circuits, and signal or data transmitting circuits. The transmitter 32 may operate utilizing communication standards such as cellular 2G, 3G, 4G, Bluetooth™, Wi-Fi, or combinations thereof. Alternatively, or in addition, the transmitter 32 may be wired and may include connectors or couplers to receive metal conductor cables or connectors or optical fiber cables. The antenna may transmit over a range of at least forty feet but the range can be increased or decreased based on internal settings.

[0048] The communications port 34 is configured to communicatively connect the controller 36 to an external computing device 42 (described below), as shown in FIG. 1. The communications port 34 may be wireless and may include antennas, signal or data

receiving circuits, and signal or data transmitting circuits. The communications port 34 may operate utilizing communication standards such as cellular 2G, 3G, 4G, Bluetooth™, or combinations thereof. Alternatively, or in addition, the communications port 34 may be wired and may include connectors or couplers to receive metal conductor cables or connectors or optical fiber cables. The communications port 34 is operable to receive downloaded software from the external computing device 42 and transmit setup instructions, diagnostic test signals, user settings, and statuses of the recording device manager 12 and the recording devices 14, 18, to the external computing device 42.

[0049] Embodiments of the present invention may also comprise one or more computer programs stored in or on computer-readable medium residing on or accessible by the controller 36. The computer programs may comprise listings of executable instructions for implementing logic functions and can be embodied in any non-transitory computer-readable medium for use by or in connection with an instruction execution system, apparatus, or device, such as a computer-based system, processor-containing system, or other system that can fetch the instructions from the instruction execution system, apparatus, or device, and execute the instructions. In the context of this application, a “computer-readable medium” can be any non-transitory medium that can contain, store, or communicate the programs. The computer-readable medium can be, for example, but not limited to, an electronic, magnetic, optical, electro-magnetic, infrared, or semi-conductor system, apparatus, or device. More specific, although not inclusive, examples of the computer-readable medium would include the following: an electrical connection having one or more wires, a portable computer diskette, a random

access memory (RAM), a read-only memory (ROM), an erasable, programmable, read-only memory (EPROM or Flash memory), an optical fiber, and a portable compact disc read-only memory (CDROM).

[0050] The internal clock 38 includes a clock chip operable to keep time and various memory and logic circuits for converting time to computer and human readable data strings. The internal clock 38 can include circuitry such as oscillators, multivibrators, phase-locked loops, counters, or combinations thereof, and can be incorporated into the controller 36. The internal clock 38 has a temporal resolution of approximately 1 ms to 10 ms. The internal clock 38 generates and sends a time reading to the controller 36 at a predetermined frequency, such as once every second or millisecond. The time reading is used by the controller 36 to create time stamps, which are transmitted to the recording devices 14, 18 for corroborating recorded data. The internal clock 38 can be calibrated or adjusted, and the format and frequency of the time readings can be changed via the external computing device 42. The time stamps can be accompanied by a signature of the time stamps' source and other metadata, as described below.

[0051] The power source 40 is electronically connected to the recording device manager 12 through dedicated wiring. The power source 40 supplies power to each of the electronic components of the recording device manager 12 and, in embodiments of the present invention, to the vehicle recording device 14. In embodiments of the present invention, the power source 40 is the police vehicle's battery but can be another power source, such as a battery cartridge of the external computing device 42 or the vehicle recording device 14.

[0052] The electronic connection between the receiver 30 and the vehicle recording device 14 optionally includes a control area network (CAN) bus 44, which “directs traffic” for incoming and outgoing signals based on indicated importance or other factors and follows an algorithm for determining the order in which (or whether) signals are transmitted.

[0053] The vehicle recording device 14 is operable to record audio, video, thermal, chemical, or other data. In some embodiments, the recording device 14 is a video recording device such as one produced by Digital Ally, Inc., including the DVM100, DVM250, DVM250Plus, DVM250Law, DVM400, DV440Ultra, DVM470, DVM500, DVM500Plus, and DVM750. As described above, in one embodiment the recording device 14 is operable to receive a signal of a triggering event, whereas in another embodiment the recording device 14 utilizes the CAN bus 44 and is operable to receive time stamps and metadata (described below) in addition to the signal of a triggering event. In other embodiments, the recording device 14 is a digital audio recorder, heat scanner, or chemical analyzer. The vehicle recording device 14 can be mounted permanently or removably on or inside the police vehicle 16. Permanently mounting the vehicle recording device 14 helps to prevent assailants from stealing or breaking it. The vehicle recording device 14 can be incorporated into the police vehicle’s rear view mirror, dashboard, spotlight, or other locations associated with the police vehicle 16 and receives power from the power source 40 through dedicated wiring. In embodiments of the present invention, the vehicle recording device 14 includes a clock substantially similar to the clock 38 for the recording device manager. In addition to the exemplary vehicle recording devices listed above, a vehicle recording

device is further described in commonly-owned U.S. Application Serial No. 12/189,192, filed August 10, 2008, entitled “Vehicle-Mounted Video System with Distributed Processing,” and the entirety of which is incorporated by reference herein.

[0054] The personal recording device 18 is small, portable, wearable, easily concealed, and is operable to record audio, video, thermal, chemical, or other data. The personal recording device 18 can be worn by the officer 20, such as on the officer’s shirt. The personal recording device 18 is operable to receive a signal instructing the device 18 to begin or stop recording, a signal indicative of a triggering event, and time stamps and metadata corresponding to the recordings. Additionally, the personal recording device 18 further includes a clock, substantially similar to the clock 38 described above for the recording device manager 12, for determining a time corresponding to when a particular item of data was recorded. An exemplary personal recording device is the “FIRSTVU HD” produced by Digital Ally, Inc. and further described in U.S. Provisional Patent Application No. 61/707,348 (“the ’348 Application”), filed September 28, 2012, and commonly assigned with the present application. The disclosures of the ’348 Application and any later-filed non-provisional applications claiming priority to the ’348 Application are hereby incorporated by reference into the present application in their entirety.

[0055] Recordings generated by the recording devices 14, 18 and associated time stamps, metadata, and user-inputted information (described below) are temporarily stored in a local memory element (hereinafter “memory”), such as a memory of the particular recording devices 14, 18, and/or a memory of a computing device located in the police vehicle 16. This information can then be uploaded to external servers or

transferred to the external computing device 42 (described below). The recordings can then be corroborated using the time stamps and metadata.

[0056] Many options and parameters pertaining to the various components and operation of the management system 10 can be setup and/or configured by connecting the recording device manager 12 to the external computing device 42 via communications port 34. The external computing device 42 can be a laptop, tablet, mobile device, smartphone, or other computing device. The external computing device 42 displays a graphical user interface (GUI) by which the police officer 20 or other user may choose options and modify parameters of the management system 10. Each option or parameter typically includes a default setting, which is employed if no change is made before use. Police officers 20 can save preferred settings in a profile so that they do not have to be manually changed at the beginning of every shift, for example. The police officer 20 can select his profile to revert to his settings.

[0057] The options and parameters for the management system 10 are stored in a configuration file and can be configured by accessing a configuration interface, as shown in FIG. 3. For example, a language and time zone can be selected. The controller 36 thereby shifts the time received from the internal clock 38 or the GNSS to the selected time zone. Daylight saving time can be enabled or disabled. Additionally, the user can toggle between standard twelve or twenty-four hour time formats. The date format for displaying on event recordings can also be changed. For example, the date can be displayed as mm/dd/yyyy or dd/mm/yy.

[0058] Metadata to be generated and transmitted to the recording devices 14, 18 can be configured and changed. For example, the locations of the various recording

devices 14, 18, an indication of which recording device or triggering event (such as turning the sirens on) caused a trigger signal to be transmitted, the number and identity of synced recording devices, the name of the police officer 20 on duty, or any other information pertaining to the recorded data can be enabled or customized. Inputting additional information for a given event, such as an event description, ethnicity, age, and gender of a suspect, and time of death, can be enabled. If enabled, this information is saved with the recorded data.

[0059] Settings pertaining to how the recording devices 14, 18 behave during an event can be changed as well. A pre-event buffer time can be chosen, which requires a device to continually record data and temporarily store it. If, for example, the pre-event buffer time is selected to be thirty seconds, when the officer 20 presses record at time t on the personal recording device 18, it will keep the thirty seconds of temporarily stored data leading up to time t . This allows for a delayed reaction time by the officer 20 without missing important data. Pre-event audio can be selected to be recorded as well. The personal recording device 18 can be set to vibrate when it begins recording. A shorter vibration can also be set for covert mode. The personal recording device 18 can also be set to vibrate when it enters a low power standby. A record-stop time delay can be setup so that when the recording device manager 12 detects that a synced recording device has stopped recording, the time delay lapses before the recording device manager 12 is allowed to broadcast a signal instructing other synced devices to cease recording. This prevents the recording device manager 12 from immediately instructing stopping other device recording. The recording device manager 12 can be enabled to broadcast a signal or alert when the personal recording device 18 goes out

of range. Also, an entry timeout duration can be set to prevent tampering or accidental input.

[0060] The recording device manager 12 is also operable to enter a low power mode or power saving mode after a predetermined time period has elapsed, such as a predetermined time period of no recording by either of the personal or vehicle recording devices. Moreover, the recording device manager 12 or the system 10 further comprises an input, such as a switch, button, or software selection, for changing the predetermined time period or to reset the elapse of the time period. In operation in embodiments of the present invention, the recording device manager 12 operates in one of two modes—a power on mode or a low power mode. If the vehicle and/or vehicle recording device 14 is on, then the manager 14 is powered on. In contrast, if the vehicle and/or vehicle recording device 14 is off, the manager 14 is powered off.

[0061] Many security precautions can also be setup, as shown in FIG. 4. For example, one or multiple service set identifiers (SSIDs) for syncing the personal recording device 18 over a wireless communications network, such as Wi-Fi, can be selected. SSID broadcasting can be enabled, which means that other devices (including unrelated devices) in the area can see the SSID. SSID broadcasting can also be disabled, which means that devices in the area must know that the SSID exists in order to use it. Passphrases, passwords, or passcodes corresponding to the SSID can be setup or changed. Data encryption can be turned on, whereby transmissions cannot be easily intercepted and decoded. A wireless communications channel can also be selected. USB ports can be set to secure mode or to operate as a conventional mass storage device. Passphrases for secure USB ports can be chosen as well.

[0062] The recording devices 14, 18 are synced with the recording device manager 12 before use by accessing a device syncing interface, as shown in FIG. 5. The device syncing interface displays a list or table of available recording devices, each of which the user may individually sync (“add”) or unsync (“remove”). Previously saved settings corresponding to the recording devices 14, 18 can be loaded, and current settings can be saved for future use.

[0063] Each recording device 14, 18 can also sync with only one recording device manager, whereas the recording device manager 12 can sync with multiple recording devices. As an example, if two officer vehicles arrive at a situation, such that an officer from each vehicle is wearing a personal recording device 18, each personal recording device can only be synced with and provide information or signals to a single recording device manager 12, namely its “home” recording device manager that is associated with the respective officer’s vehicle. In contrast, should two officer vehicles arrive at a situation, and the vehicle recording device in one of the vehicles begins recording, then the recording device manager, receiving the recording signal from the vehicle recording device, is operable to instruct the personal recording devices of both officers (of the two separate officer vehicles) to begin recording. In an alternative embodiment, the personal recording device 18 may be configured to have a hierarchy of recording device managers with which to communicate. For example, the personal recording device’s home recording device manager is at the top of the hierarchy, and will be the first manager with which it will attempt to communicate. If the home recording device is powered down, disabled, or out of range, the personal recording

device 18 will attempt to communicate with the next manager in the hierarchy until a successful communication is made.

[0064] The options and parameters pertaining to the recording devices 14, 18 can be set by accessing a recording settings interface, as shown in FIG. 6. For example, video record quality can be selected from 512 kbps, 1 Mbps, and 2 Mbps, labeled “standard”, “high”, and “very high”, respectively. Record frame rate can be selected from 5 to 60 fps. Record size can be selected from VGA (640 x 480 pixels), 720p (1280 x 720 pixels), and 1080p (1920 x 1080 pixels). Also, an indicator LED can be enabled to illuminate when the personal recording device 18 is recording.

[0065] The recording devices 14, 18 can be allowed to upload recordings to an external server or computing device. The external server or computing device could be a computing device housed in the vehicle, a centralized computing device, such as housed at a police precinct, or a DVR 46 (see Fig. 1) or other large-capacity storage device. Multiple Wi-Fi authorized upload times can be set, which denote when recording devices 14, 18 are allowed to upload data. Ideally, upload times will be set during non-use times such as shift changes, lunch breaks, and off duty times. Alternatively, uploading of recorded data can occur whenever the recording devices are within a predetermined distance from the external server or computing device, such as when the officer is located in the vehicle or, preferably, when the officer’s vehicle is located near the police precinct. Upload settings can be changed as well.

[0066] Turning again to FIG. 1, use of the management system 10 and recording device manager 12 is now explained. As previously discussed, the exemplary management system 10 includes the vehicle recording device 14 and personal

recording device 18, but it will be understood that duplicate or additional recording devices, such as audio recorders, thermal imagers, security cameras, radios, seismic sensors, radar and LIDAR scanners, and chemical analyzers, can be synced to the recording device manager 12. The officer 20 first connects the external computing device 42 to the recording device manager 12, sets the various options and parameters described above, and then optionally disconnects the external computing device 42 from the recording device manager 12. Once the recording devices 14, 18 are synced with the recording device manager 12, the management system 10 is ready to be used.

[0067] As a situation unfolds, the officer 20 will decide to capture video, audio, or other data as evidence, and will either cause the personal recording device 18 to begin recording if he is on foot, or cause the vehicle recording device 14 to begin recording if he is inside the police vehicle 16. In either case, the device that is recording transmits a signal to the recording device manager 12 indicating that it has begun recording, and then continues to transmit a signal indicating that it is recording. The recording device manager 12 receives the signal and broadcasts or transmits a signal to the other recording device 14, 18 to instruct the other recording device 14, 18 to begin recording. As discussed above, the recording device manager 12 may also instruct recording of the recording device 14, 18 upon receipt of a signal indicative of a triggering event, such as the officer turning on the police vehicle sirens, police lights, spotlight, etc.

[0068] If the personal recording device 18 begins recording but is out of range of the recording device manager 12 (e.g., greater than a preset distance, such as forty feet, from the recording device manager 12), the recording device manager 12 will not detect that the personal recording device 18 is recording and thus will not broadcast a

signal to the other recording device, namely the vehicle recording device 14, to instruct recording. However, if the personal recording device 18 comes into range while recording, the recording device manager 12 will detect the continuously transmitted signal from the personal recording device 18 and will then broadcast a signal to instruct recording by the vehicle recording device 14.

[0069] In even further embodiments of the present invention, the recording device manager 12 detects when a recording device 14, 18 has stopped recording and transmits a signal to the other recording device 14, 18 indicating that it should stop recording. In an alternative embodiment, the recording device manager 12 only transmits a signal to the other recording device 14, 18 that it may stop recording but does not otherwise instruct ceasing of recording. When a recording device 14, 18 receives this permission, the officer 20 can then manually stop the recording on that device. This prevents accidentally, unintentionally, or prematurely ending a recording and losing important data. For the same reasons, the recording device manager 12 may indicate to one of the recording devices 14, 18 that the other recording device is no longer in range or that power to a recording device has been lost and that it should stop recording. Alternatively, the recording device manager 12 instructs the other recording device 14, 18 that it may stop recording. Similarly, if the signal to instruct recording was in response to a triggering event, such as by turning on the sirens, police lights, or spotlight, etc., and the triggering event subsequently ceases, the recording device manager 12 may transmit a signal to the other recording device 14, 18 that it may stop recording.

[0070] Although the invention has been described with reference to the embodiments illustrated in the attached drawing figures, it is noted that equivalents may be employed and substitutions made herein without departing from the scope of the invention as recited in the claims.

[0071] Having thus described various embodiments of the invention, what is claimed as new and desired to be protected by Letters Patent includes the following:

CLAIMS:

1. A recording device manager for use in a multiple recording device management system, the recording device manager comprising:
 - a controller including at least one receiver and at least one transmitter,
 - wherein said at least one receiver is operable to receive a first communication signal from a first recording device indicating the first recording device is recording or has been instructed to record an event,
 - wherein said at least one transmitter is operable to transmit a second communication signal to a second recording device instructing the second recording device to begin recording the event, and
 - wherein the second communication signal is transmitted to the second recording device in response to the receiver receiving the first communication signal from the first recording device indicating the first recording device is recording or has been instructed to record, such that the recording device manager insures the first and second recording devices both record the event.
2. The recording device manager of claim 1, wherein the recording device manager has a wireless communication range, and the recording device manager is operable to transmit the second communication signal to the second recording device upon the second recording device being within the wireless communication range.

3. The recording device manager of claim 2,

wherein the recording device manager is operable to receive a third communication signal from the first recording device indicating that the first recording device has been manually instructed to stop recording, and

wherein upon receiving the third communication signal, the recording device manager transmits to the second recording device a fourth communication signal instructing the second recording device that it may stop recording.

4. The recording device manager of claim 3, wherein the recording device manager has at least one parameter that is variable and that is operable to be changed via one or both of the first and second recording devices.

5. The recording device manager of claim 1, wherein the recording device manager is operable to be pre-synced with predetermined recording devices, is operable to compare a recording device identifier of a recording device with identifiers in a list of pre-synced recording devices, and is operable to selectively transmit communications only to the predetermined recording devices.

6. The recording device manager of claim 1, wherein the recording device manager includes at least one universal serial bus (USB) port for connecting the recording device manager to an external computer.

7. The recording device manager of claim 1, wherein the second communication signal is encrypted.

8. The recording device manager of claim 1, wherein the recording device manager is communicatively coupled to the first recording device via a control area network (CAN) bus.

9. The recording device manager of claim 1, further comprising an indicator for indicating a number of established wireless links.

10. The recording device manager of claim 1, further comprising an indicator for indicating that the management system is receiving electric power.

11. The recording device manager of claim 1, further comprising an indicator for indicating whether the management system is operating in a low power mode or a power on mode.

12. The recording device manager of claim 1, further comprising:
a plurality of indicators; and
an input such as a switch or button operable to temporarily disable the indicators
so that the recording device manager enters a covert mode when the input
is activated.

13. A recording device manager for use in a multiple recording device system, the recording device manager comprising:

- a controller including at least one receiver and at least one transmitter; and
- an internal clock,

wherein said at least one receiver is operable to receive a first communication signal from a first recording device indicating the first recording device is recording or has been instructed to record an event,

wherein said at least one transmitter is operable to transmit a second communication signal to a second recording device instructing the second recording device to begin recording the event,

wherein the second communication signal is transmitted to the second recording device in response to the receiver receiving the first communication signal from the first recording device indicating the first recording device is recording or has been instructed to record, such that the recording device manager insures the first and second recording devices both record the event,

wherein said controller is operable to obtain a time reading from the internal clock and create a time stamp corresponding to the time reading,

wherein the transmitter is operable to transmit a first time stamp to the first recording device corresponding to a specific time reading for a first item of recorded data,

wherein the transmitter is operable to transmit a second time stamp to the second recording device corresponding to said specific time reading for a second item of recorded data,
wherein said first and second items of recorded data occurred at the same time,
and
wherein as a result of the first and second time stamps identifying the same specific time reading, said first item of recorded data recorded by the first recording device has the same time stamp as said second item of recorded data recorded by the second recording device so as to correlate the respective particular items of recorded data between the first and second recording devices.

14. The recording device manager of claim 13, wherein the controller is further operable to transmit a first unique serial number to the first recording device and a second unique serial number to the second recording device when the controller transmits the respective time stamps to the recording devices, the first and second unique serial numbers being identical and indicating that the recording device manager is the source of the time stamps so that an accurateness of the correlation between the first and second recording devices can be verified.

15. The recording device manager of claim 14, wherein the transmitter is operable to transmit metadata to the first and second recording devices, such metadata selected from the group consisting of: identification of a source of the time stamp, a triggering event, a date, and a location of the recording device manager.

16. The recording device manager of claim 13, wherein the recording device manager has a wireless communication range, and the recording device manager is operable to transmit the second communication signal to the second recording device upon the second recording device being within the wireless communication range.

17. The recording device manager of claim 16,
wherein the recording device manager is operable to receive a third communication signal from the first recording device indicating that the first recording device has been manually instructed to stop recording, and

wherein upon receiving the third communication signal, the recording device manager transmits to the second recording device a fourth communication signal instructing the second recording device that it may stop recording.

18. The recording device manager of claim 13, wherein the recording device manager is operable to be pre-synced with predetermined recording devices, is operable to compare a recording device identifier of a recording device with identifiers in a list of pre-synced recording devices, and is operable to selectively transmit communications only to the predetermined recording devices.

19. A non-transitory computer readable medium having a computer program stored thereon for managing multiple recording devices, wherein the computer program instructs a processor to perform the following steps:

receive, by a recording device manager, a first communication signal from a first recording device indicating the first recording device is recording or has been instructed to record an event; and

transmit, by the recording device manager, a second communication signal to a second recording device instructing the second recording device to begin recording the event,

wherein the second communication signal is transmitted to the second recording device in response to receiving the first communication signal from the first recording device indicating the first recording device is recording or has been instructed to record, such that the recording device manager insures the first and second recording devices both record the event.

20. The computer readable storage medium of claim 19, wherein the processor is further operable to perform the steps of:

obtain, by the recording device manager, a time reading from an internal clock associated with the recording device manager;

create, by the recording device manager, a time stamp corresponding to the time reading;

transmit, by the recording device manager, a first time stamp to the first recording device corresponding to a specific time reading for a first item of recorded data; and

transmit, by the recording device manager, a second time stamp to the second recording device corresponding to said specific time reading for a second item of recorded data,

wherein said first and second items of recorded data occurred at the same time, and

wherein as a result of the first and second time stamps identifying the same specific time reading, said first item of recorded data recorded by the first recording device has the same time stamp as said second item of recorded data recorded by the second recording device so as to correlate the respective particular items of recorded data between the first and second recording devices.

ABSTRACT

A multiple recording device management system including an intermediate multiple recording device managing apparatus, a vehicle recording device mounted in a police vehicle and synced to the managing apparatus, and a personal recording device carried by a police officer and wirelessly synced to the managing apparatus. The managing apparatus is operable to detect when the vehicle recording device, personal recording device, or any other synced device in range has begun recording and to transmit a communication signal to any synced recording device in range indicating that the recording device should begin recording and to further transmit a time stamp to synced recording devices for corroborating recorded data.

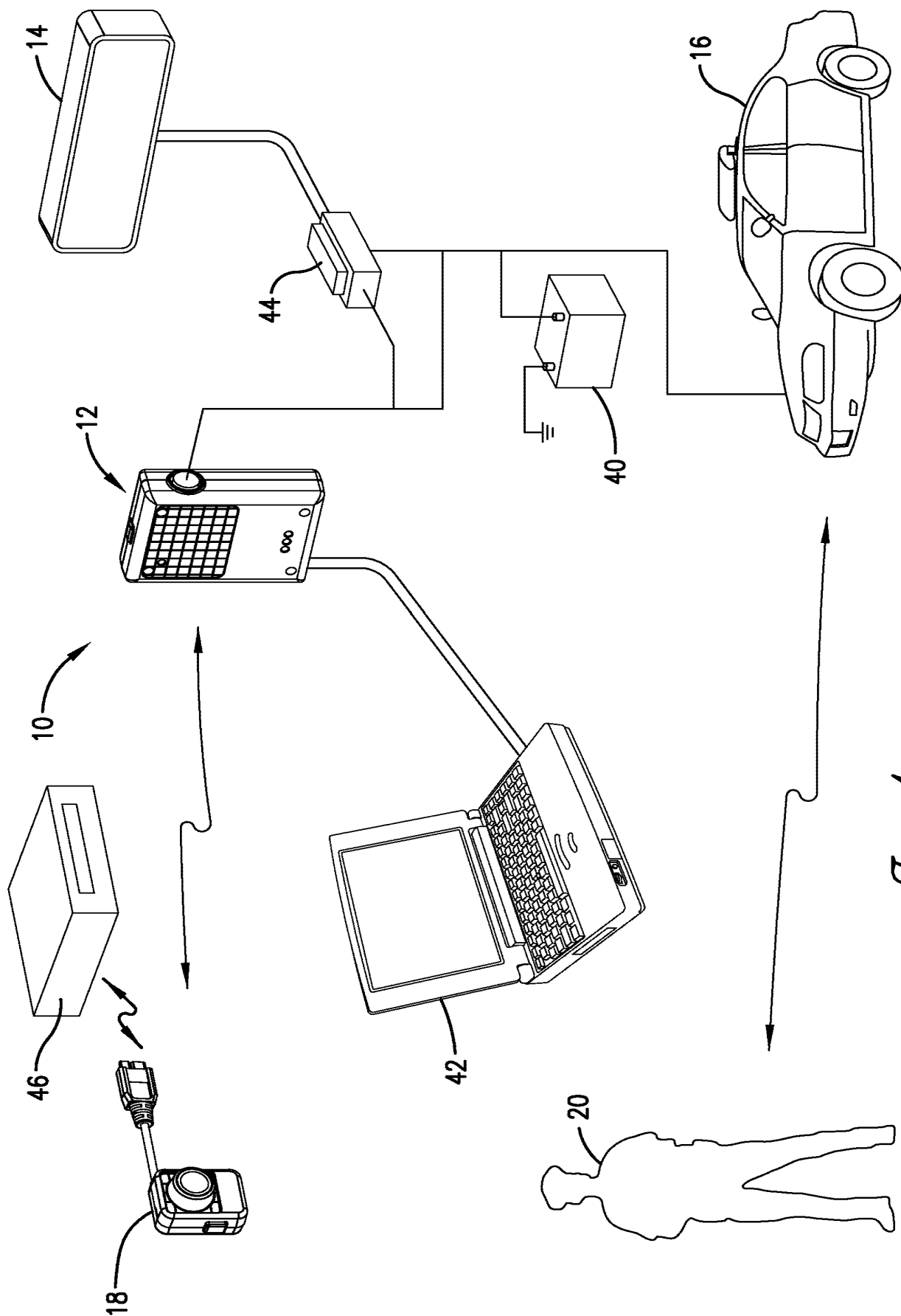
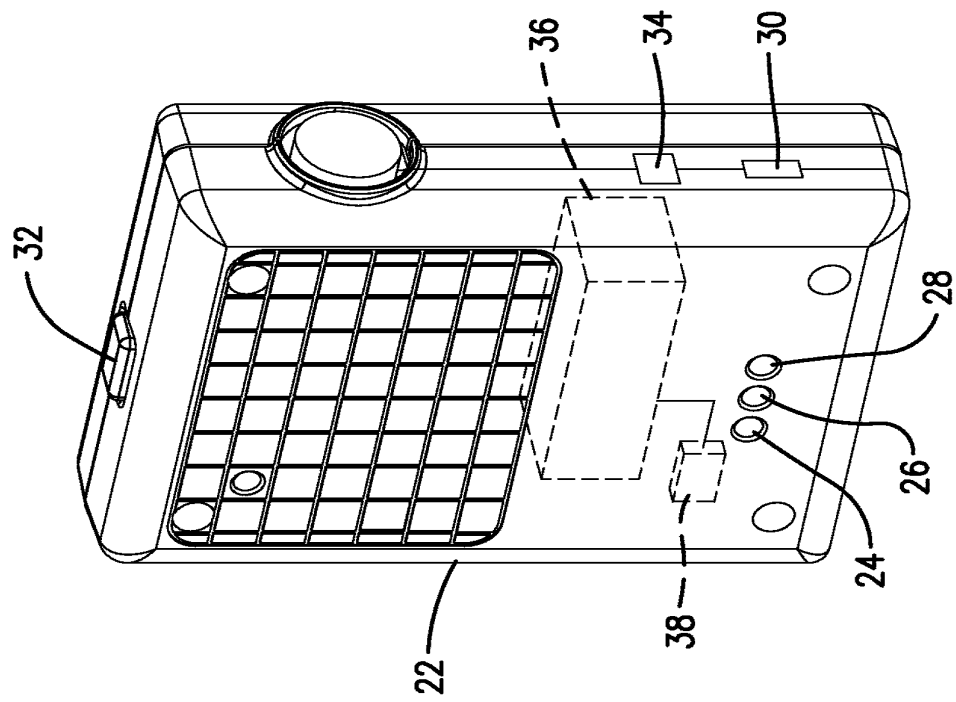


Fig. 1.

*Fig. 2.*

Mini Configuration Manager

File

FirstVu

Location

Languageen-US

Date Formatmm/dd/yy

24 Hour TimeTRUE

Time ZoneUTC-9

Daylight SavingFALSE

Profile

Eventid EnableFALSE

Ethnicity ProfileFALSE

Gender ProfileFALSE

Incident EnableFALSE

Age ProfileFALSE

Settings

Audio MuteFALSE

Audio Pre-Event EnableFALSE

Vibrate Record Covert10

Vibrate Standby180

Pre-Event EnableFALSE

Memory ModeINTERNAL

Vibrate Record Non-Covert60

Entry Timeout180

Fig. 3.

☐ BroadCast SSID

SSID

PassPhrase

Security

Encryption

Channel

☐ Advanced Trigger

Advanced DVM

☐ 500 Plus

☐ DVM 250

☐ DVM 470

Post Trig Delay

Min

Sec

Set Time / Date

mm

dd

yy

hh

mm

AM/PM

Time Zone

☐ Daylight Savings

Read Time / Date

Fig. 4.

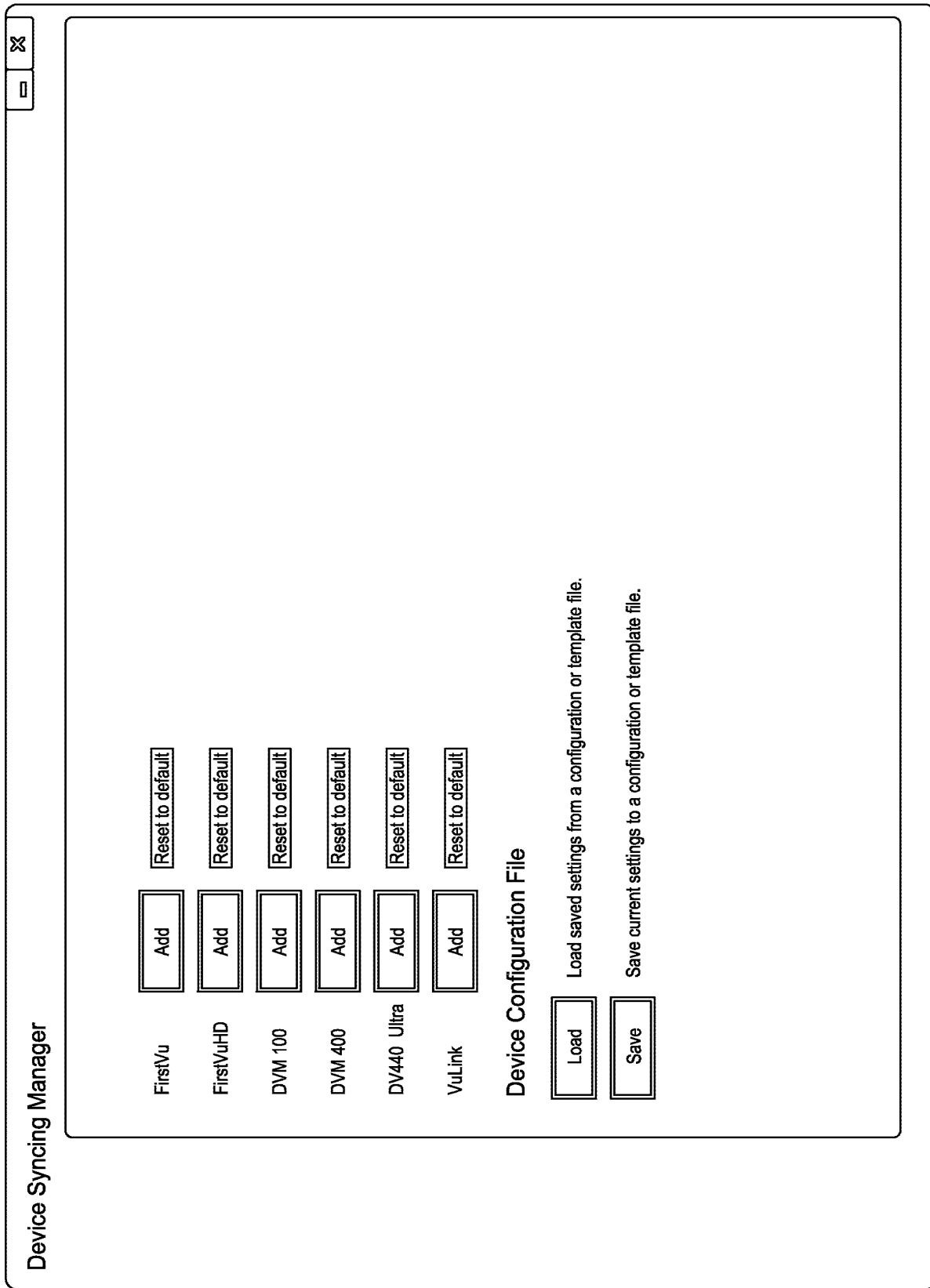


Fig. 5.

Mini Configuration Manager

File

FirstVuHD

✕

☐

Location

Time Zone

UTC-6

Daylight Saving

On

Settings

Pre-Event Time

0

Record Quality

Very High

Record Size

720p(1280x720)

Date Format

mm/dd/yy

Time Format

12 Hour

Audio Pre-Event

Disabled

FPS

30 FPS

Record LED

Enabled

WiFi

SSID

PASSPHRASE

SECURITY

ENCRYPTION

CHANNEL

Fig. 6.

DECLARATION (37 CFR 1.63) FOR UTILITY OR DESIGN APPLICATION USING AN APPLICATION DATA SHEET (37 CFR 1.76)

**Title of
Invention**

COMPUTER PROGRAM, METHOD, AND SYSTEM FOR MANAGING MULTIPLE DATA
RECORDING DEVICES

As the below named inventor, I hereby declare that:

This declaration
is directed to:



The attached application, or



United States application or PCT international application number _____
filed on _____.

The above-identified application was made or authorized to be made by me.

I believe that I am the original inventor or an original joint inventor of a claimed invention in the application.

I hereby acknowledge that any willful false statement made in this declaration is punishable under 18 U.S.C. 1001 by fine or imprisonment of not more than five (5) years, or both.

WARNING:

Petitioner/applicant is cautioned to avoid submitting personal information in documents filed in a patent application that may contribute to identity theft. Personal information such as social security numbers, bank account numbers, or credit card numbers (other than a check or credit card authorization form PTO-2038 submitted for payment purposes) is never required by the USPTO to support a petition or an application. If this type of personal information is included in documents submitted to the USPTO, petitioners/applicants should consider redacting such personal information from the documents before submitting them to the USPTO. Petitioner/applicant is advised that the record of a patent application is available to the public after publication of the application (unless a non-publication request in compliance with 37 CFR 1.213(a) is made in the application) or issuance of a patent. Furthermore, the record from an abandoned application may also be available to the public if the application is referenced in a published application or an issued patent (see 37 CFR 1.14). Checks and credit card authorization forms PTO-2038 submitted for payment purposes are not retained in the application file and therefore are not publicly available.

LEGAL NAME OF INVENTOR

Inventor: Stanton E. Ross

Date (Optional) : _____

Signature: 

Note: An application data sheet (PTO/SB/14 or equivalent), including naming the entire inventive entity, must accompany this form or must have been previously filed. Use an additional PTO/AIA/01 form for each additional inventor.

This collection of information is required by 35 U.S.C. 115 and 37 CFR 1.63. The information is required to obtain or retain a benefit by the public which is to file (and by the USPTO to process) an application. Confidentiality is governed by 35 U.S.C. 122 and 37 CFR 1.11 and 1.14. This collection is estimated to take 1 minute to complete, including gathering, preparing, and submitting the completed application form to the USPTO. Time will vary depending upon the individual case. Any comments on the amount of time you require to complete this form and/or suggestions for reducing this burden, should be sent to the Chief Information Officer, U.S. Patent and Trademark Office, U.S. Department of Commerce, P.O. Box 1450, Alexandria, VA 22313-1450. DO NOT SEND FEES OR COMPLETED FORMS TO THIS ADDRESS. **SEND TO: Commissioner for Patents, P.O. Box 1450, Alexandria, VA 22313-1450.**

If you need assistance in completing the form, call 1-800-PTO-9199 and select option 2.

Under the Paperwork Reduction Act of 1995, no persons are required to respond to a collection of information unless it displays a valid OMB control number.

DECLARATION (37 CFR 1.63) FOR UTILITY OR DESIGN APPLICATION USING AN APPLICATION DATA SHEET (37 CFR 1.76)

**Title of
Invention**

COMPUTER PROGRAM, METHOD, AND SYSTEM FOR MANAGING MULTIPLE
DATA RECORDING DEVICES

As the below named inventor, I hereby declare that:

This declaration
is directed to:



The attached application, or



United States application or PCT international application number _____
filed on _____.

The above-identified application was made or authorized to be made by me.

I believe that I am the original inventor or an original joint inventor of a claimed invention in the application.

I hereby acknowledge that any willful false statement made in this declaration is punishable under 18 U.S.C. 1001 by fine or imprisonment of not more than five (5) years, or both.

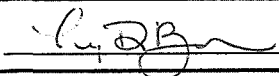
WARNING:

Petitioner/applicant is cautioned to avoid submitting personal information in documents filed in a patent application that may contribute to identity theft. Personal information such as social security numbers, bank account numbers, or credit card numbers (other than a check or credit card authorization form PTO-2038 submitted for payment purposes) is never required by the USPTO to support a petition or an application. If this type of personal information is included in documents submitted to the USPTO, petitioners/applicants should consider redacting such personal information from the documents before submitting them to the USPTO. Petitioner/applicant is advised that the record of a patent application is available to the public after publication of the application (unless a non-publication request in compliance with 37 CFR 1.213(a) is made in the application) or issuance of a patent. Furthermore, the record from an abandoned application may also be available to the public if the application is referenced in a published application or an issued patent (see 37 CFR 1.14). Checks and credit card authorization forms PTO-2038 submitted for payment purposes are not retained in the application file and therefore are not publicly available.

LEGAL NAME OF INVENTOR

Inventor: Troy D. Bowlin

Date (Optional): 7/17/2013

Signature: 

Note: An application data sheet (PTO/SB/14 or equivalent), including naming the entire inventive entity, must accompany this form or must have been previously filed. Use an additional PTO/AIA/01 form for each additional inventor.

This collection of information is required by 35 U.S.C. 115 and 37 CFR 1.63. The information is required to obtain or retain a benefit by the public which is to file (and by the USPTO to process) an application. Confidentiality is governed by 35 U.S.C. 122 and 37 CFR 1.11 and 1.14. This collection is estimated to take 1 minute to complete, including gathering, preparing, and submitting the completed application form to the USPTO. Time will vary depending upon the individual case. Any comments on the amount of time you require to complete this form and/or suggestions for reducing this burden, should be sent to the Chief Information Officer, U.S. Patent and Trademark Office, U.S. Department of Commerce, P.O. Box 1450, Alexandria, VA 22313-1450. DO NOT SEND FEES OR COMPLETED FORMS TO THIS ADDRESS. **SEND TO: Commissioner for Patents, P.O. Box 1450, Alexandria, VA 22313-1450.**

If you need assistance in completing the form, call 1-800-PTO-9199 and select option 2.

Under the Paperwork Reduction Act of 1995, no persons are required to respond to a collection of information unless it displays a valid OMB control number.

**DECLARATION (37 CFR 1.63) FOR UTILITY OR DESIGN APPLICATION USING AN
APPLICATION DATA SHEET (37 CFR 1.76)****Title of
Invention****COMPUTER PROGRAM, METHOD, AND SYSTEM FOR MANAGING MULTIPLE
DATA RECORDING DEVICES**

As the below named inventor, I hereby declare that:

This declaration
is directed to:

The attached application, or

United States application or PCT international application number _____
filed on _____.

The above-identified application was made or authorized to be made by me.

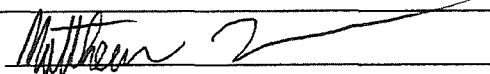
I believe that I am the original inventor or an original joint inventor of a claimed invention in the application.

I hereby acknowledge that any willful false statement made in this declaration is punishable under 18 U.S.C. 1001
by fine or imprisonment of not more than five (5) years, or both.**WARNING:**

Petitioner/applicant is cautioned to avoid submitting personal information in documents filed in a patent application that may contribute to identity theft. Personal information such as social security numbers, bank account numbers, or credit card numbers (other than a check or credit card authorization form PTO-2038 submitted for payment purposes) is never required by the USPTO to support a petition or an application. If this type of personal information is included in documents submitted to the USPTO, petitioners/applicants should consider redacting such personal information from the documents before submitting them to the USPTO. Petitioner/applicant is advised that the record of a patent application is available to the public after publication of the application (unless a non-publication request in compliance with 37 CFR 1.213(a) is made in the application) or issuance of a patent. Furthermore, the record from an abandoned application may also be available to the public if the application is referenced in a published application or an issued patent (see 37 CFR 1.14). Checks and credit card authorization forms PTO-2038 submitted for payment purposes are not retained in the application file and therefore are not publicly available.

LEGAL NAME OF INVENTORInventor: Matthew R. Andrews

Date (Optional) : _____

Signature: 

Note: An application data sheet (PTO/SB/14 or equivalent), including naming the entire inventive entity, must accompany this form or must have been previously filed. Use an additional PTO/AIA/01 form for each additional inventor.

This collection of information is required by 35 U.S.C. 115 and 37 CFR 1.63. The information is required to obtain or retain a benefit by the public which is to file (and by the USPTO to process) an application. Confidentiality is governed by 35 U.S.C. 122 and 37 CFR 1.11 and 1.14. This collection is estimated to take 1 minute to complete, including gathering, preparing, and submitting the completed application form to the USPTO. Time will vary depending upon the individual case. Any comments on the amount of time you require to complete this form and/or suggestions for reducing this burden, should be sent to the Chief Information Officer, U.S. Patent and Trademark Office, U.S. Department of Commerce, P.O. Box 1450, Alexandria, VA 22313-1450. DO NOT SEND FEES OR COMPLETED FORMS TO THIS ADDRESS. **SEND TO: Commissioner for Patents, P.O. Box 1450, Alexandria, VA 22313-1450.**

If you need assistance in completing the form, call 1-800-PTO-9199 and select option 2.

PATENT APPLICATION FEE DETERMINATION RECORD Substitute for Form PTO-875	Application or Docket Number 13/967,151	Filing Date 08/14/2013	<input type="checkbox"/> To be Mailed
---	---	----------------------------------	---------------------------------------

 ENTITY: ☐ LARGE ☒ SMALL ☐ MICRO

APPLICATION AS FILED – PART I

FOR	NUMBER FILED	NUMBER EXTRA	RATE (\$)	FEE (\$)
<input type="checkbox"/> BASIC FEE (37 CFR 1.16(a), (b), or (c))	N/A	N/A	N/A	
<input type="checkbox"/> SEARCH FEE (37 CFR 1.16(k), (l), or (m))	N/A	N/A	N/A	
<input type="checkbox"/> EXAMINATION FEE (37 CFR 1.16(o), (p), or (q))	N/A	N/A	N/A	
TOTAL CLAIMS (37 CFR 1.16(i))	minus 20 =	*	X \$ =	
INDEPENDENT CLAIMS (37 CFR 1.16(h))	minus 3 =	*	X \$ =	
<input type="checkbox"/> APPLICATION SIZE FEE (37 CFR 1.16(s))	If the specification and drawings exceed 100 sheets of paper, the application size fee due is \$310 (\$155 for small entity) for each additional 50 sheets or fraction thereof. See 35 U.S.C. 41(a)(1)(G) and 37 CFR 1.16(s).			
<input type="checkbox"/> MULTIPLE DEPENDENT CLAIM PRESENT (37 CFR 1.16(j))				
* If the difference in column 1 is less than zero, enter "0" in column 2.			TOTAL	

APPLICATION AS AMENDED – PART II

AMENDMENT	(Column 1)	(Column 2)	(Column 3)	RATE (\$)	ADDITIONAL FEE (\$)
	CLAIMS REMAINING AFTER AMENDMENT		HIGHEST NUMBER PREVIOUSLY PAID FOR	PRESENT EXTRA	
	Total (37 CFR 1.16(i))	*	Minus	**	=
	Independent (37 CFR 1.16(h))	*	Minus	***	=
	<input type="checkbox"/> Application Size Fee (37 CFR 1.16(s))				
	<input type="checkbox"/> FIRST PRESENTATION OF MULTIPLE DEPENDENT CLAIM (37 CFR 1.16(j))				
					TOTAL ADD'L FEE
	CLAIMS REMAINING AFTER AMENDMENT		HIGHEST NUMBER PREVIOUSLY PAID FOR	PRESENT EXTRA	
	Total (37 CFR 1.16(i))	*	Minus	**	=
	Independent (37 CFR 1.16(h))	*	Minus	***	=
	<input type="checkbox"/> Application Size Fee (37 CFR 1.16(s))				
	<input type="checkbox"/> FIRST PRESENTATION OF MULTIPLE DEPENDENT CLAIM (37 CFR 1.16(j))				
					TOTAL ADD'L FEE

* If the entry in column 1 is less than the entry in column 2, write "0" in column 3.

** If the "Highest Number Previously Paid For" IN THIS SPACE is less than 20, enter "20".

*** If the "Highest Number Previously Paid For" IN THIS SPACE is less than 3, enter "3".

The "Highest Number Previously Paid For" (Total or Independent) is the highest number found in the appropriate box in column 1.

 LIE
 /JAMES MASON/

This collection of information is required by 37 CFR 1.16. The information is required to obtain or retain a benefit by the public which is to file (and by the USPTO to process) an application. Confidentiality is governed by 35 U.S.C. 122 and 37 CFR 1.14. This collection is estimated to take 12 minutes to complete, including gathering, preparing, and submitting the completed application form to the USPTO. Time will vary depending upon the individual case. Any comments on the amount of time you require to complete this form and/or suggestions for reducing this burden, should be sent to the Chief Information Officer, U.S. Patent and Trademark Office, U.S. Department of Commerce, P.O. Box 1450, Alexandria, VA 22313-1450. DO NOT SEND FEES OR COMPLETED FORMS TO THIS ADDRESS. **SEND TO: Commissioner for Patents, P.O. Box 1450, Alexandria, VA 22313-1450.**

If you need assistance in completing the form, call 1-800-PTO-9199 and select option 2.