

IN THE UNITED STATES PATENT & TRADEMARK OFFICE

Appln. No: **16/687,966**
Applicant: **Cirba IP Inc.**
Filed: **November 19, 2019**
Title: **Method and System for Determining Compatibility of Computer Systems**
Art Unit: **NOT YET ASSIGNED**
Examiner: **NOT YET ASSIGNED**
Docket No: **59612/00099**

Mail Stop Amendment
U.S. Patent & Trademark Office
Commissioner for Patents
P.O. Box 1450
Alexandria, VA 22313-1450

PRELIMINARY AMENDMENT

Sir:

Prior to consideration by an Examiner, Applicant wishes to amend the above-identified application as follows:

Amendments to the Claims: are reflected in the listing of claims that begins on page 2 of this paper.

Amendments to the Drawings: begin on page 10 of this paper and includes eighteen (18) attached replacement sheets.

Remarks: begin on page 11 of this paper.

Amendments to the Claims

This listing of claims will replace all prior versions and listings of claims in the application:

Listing of claims:

1. (Cancel)
2. (New) A system for determining placement of a source system on a target system, the system configured to execute operations causing the system to:
 - collect data for a collection of systems, the collection of systems comprising a plurality of source systems and a plurality of target systems;
 - evaluate compatibility between any one of the plurality of source systems and any one of the plurality of target systems by evaluating one or more rules that operate against attributes or data relating to the source and target systems being evaluated;
 - evaluate compatibility between any two or more of the plurality of source systems by evaluating one or more rules that operate against attributes or data relating to the two or more source systems;
 - evaluate compatibility between any one of the plurality of source systems and any one of the plurality of target systems by evaluating the impact on resource utilization of the target system of placing that source system on that target system, in combination with any other source systems, either already placed on that target system, or being evaluated for placement onto that target system;
 - determine a placement of at least one source system of the collection of systems on at least one target system of the collection of systems by employing the evaluating operations on any one or more of the systems of the collection of systems; and
 - issue instructions to place the at least one source system on the at least one target system in accordance with the determining.
3. (New) The system of claim 2, wherein the source system being placed on the target system is a new system that is not yet running on a target system in the collection of systems.

4. (New) The system of claim 3, wherein the new system is forward consolidated onto an existing target system in the collection of systems.
5. (New) The system of claim 3, wherein the rules relating to the source and target systems or the rules relating to the two source systems are user-defined.
6. (New) The system of claim 5, further configured to factor in user-entered attributes of any of the systems in the collection of systems.
7. (New) The system of claim 3, wherein the rule-based compatibility analysis evaluates technical considerations.
8. (New) The system of claim 7, wherein the technical considerations comprise an evaluation of operating system, OS version, patches, application settings, or hardware devices.
9. (New) The system of claim 3 wherein the rule-based compatibility analysis evaluates business considerations.
10. (New) The system of claim 9, wherein the business considerations comprise an evaluation of physical location, organization department, data segregation requirements, owner, service level agreements, maintenance windows, hardware lease agreements, or software licensing agreements.
11. (New) The system of claim 3, wherein the rule-based compatibility analysis evaluates both technical and business considerations.
12. (New) The system of claim 2, wherein the rules relating to the source and target systems or the rules relating to the two source systems are user-defined.
13. (New) The system of claim 12, further configured to factor in user-entered attributes of any of the systems in the collection of systems.

14. (New) The system of claim 12, wherein the rule-based compatibility analysis evaluates technical considerations.

15. (New) The system of claim 14, wherein the technical considerations comprise an evaluation of operating system, OS version, patches, application settings, or hardware devices.

16. (New) The system of claim 12 wherein the rule-based compatibility analysis evaluates business considerations.

17. (New) The system of claim 16, wherein the business considerations comprise an evaluation of physical location, organization department, data segregation requirements, owner, service level agreements, maintenance windows, hardware lease agreements, or software licensing agreements.

18. (New) The system of claim 12, wherein the rule-based compatibility analysis evaluates both technical and business considerations.

19. (New) The system of claim 18, wherein the source system being placed on the target system is a new system that is not yet running on a target system in the collection of systems

20. (New) The system of claim 2, wherein the rule-based compatibility analysis evaluates technical considerations.

21. (New) The system of claim 20, wherein the technical considerations comprise an evaluation of operating system, OS version, patches, application settings, or hardware devices.

22. (New) The system of claim 2, wherein the rule-based compatibility analysis evaluates business considerations.

23. (New) The system of claim 22, wherein the business considerations comprise an evaluation

of physical location, organization department, data segregation requirements, owner, service level agreements, maintenance windows, hardware lease agreements, or software licensing agreements.

24. (New) The system of claim 2, wherein the rule-based compatibility analysis evaluates both technical and business considerations.

25. (New) The system of claim 2, wherein resource utilization data used in evaluating the impact on the resource utilization of the target system of placing that source on that target comprises CPU utilization, memory usage, disk space used, disk I/O throughput or network I/O throughput.

26. (New) The system of claim 25, wherein benchmarks are used to normalize CPU utilization data between source and target systems in order to account for differing CPU performance for different systems.

27. (New) The system of claim 2, wherein the system is located remotely from the collection of systems.

28. (New) The system of claim 2, wherein the placement takes into account a pre-existing source-target transfer set, and any placements are incremental to the transfer set.

29. (New) The system of claim 2, wherein the target system onto which the source system is placed is a new system.

30. (New) A computer implemented method for placing a source system on a target system, the method comprising:

collecting data for a collection of systems, the collection of systems comprising a plurality of source systems and a plurality of target systems;

evaluating compatibility between any one of the plurality of source systems and any one of the plurality of target systems by evaluating one or more rules that operate against attributes or data relating to the source and target systems being evaluated;

evaluating compatibility between any two or more of the plurality of source systems by evaluating one or more rules that operate against attributes or data relating to the two or more source systems;

evaluating compatibility between any one of the plurality of source systems and any one of the plurality of target systems by evaluating the impact on resource utilization of the target system of placing that source system on that target system, in combination with any other source systems, either already placed on that target system, or being evaluated for placement onto that target system;

determining a placement of at least one source system of the collection of systems on at least one target system of the collection of systems by employing the evaluating operations on any one or more of the systems of the collection of systems; and

issuing instructions to place the at least one source system on the at least one target system in accordance with the determining.

31. (New) The method of claim 30, wherein the source system being placed on the target system is a new system that is not yet running on a target system in the collection of systems.

32. (New) The method of claim 31, wherein the new system is forward consolidated onto an existing target system in the collection of systems.

33. (New) The method of claim 31, wherein the rules relating to the source and target systems or the rules relating to the two source systems are user-defined.

34. (New) The method of claim 33, further comprising factoring in user-entered attributes of any of the systems in the collection of systems.

35. (New) The method of claim 31, wherein the rule-based compatibility analysis evaluates technical considerations.

36. (New) The method of claim 35, wherein the technical considerations comprise an evaluation of operating system, OS version, patches, application settings, or hardware devices.

37. (New) The method of claim 31 wherein the rule-based compatibility analysis evaluates business considerations.

38. (New) The method of claim 37, wherein the business considerations comprise an evaluation of physical location, organization department, data segregation requirements, owner, service level agreements, maintenance windows, hardware lease agreements, or software licensing agreements.

39. (New) The method of claim 31, wherein the rule-based compatibility analysis evaluates both technical and business considerations.

40. (New) The method of claim 30, wherein the rules relating to the source and target systems or the rules relating to the two source systems are user-defined.

41. (New) The method of claim 40, further comprising factoring in user-entered attributes of any of the systems in the collection of systems.

42. (New) The method of claim 40, wherein the rule-based compatibility analysis evaluates technical considerations.

43. (New) The method of claim 42, wherein the technical considerations comprise an evaluation of operating system, OS version, patches, application settings, or hardware devices.

44. (New) The method of claim 40 wherein the rule-based compatibility analysis evaluates business considerations.

45. (New) The method of claim 44, wherein the business considerations comprise an evaluation of physical location, organization department, data segregation requirements, owner, service level agreements, maintenance windows, hardware lease agreements, or software licensing agreements.

46. (New) The method of claim 40, wherein the rule-based compatibility analysis evaluates both technical and business considerations.

47. (New) The method of claim 46, wherein the source system being placed on the target system is a new system that is not yet running on a target system in the collection of systems

48. (New) The method of claim 30, wherein the rule-based compatibility analysis evaluates technical considerations.

49. (New) The method of claim 48, wherein the technical considerations comprise an evaluation of operating system, OS version, patches, application settings, or hardware devices.

50. (New) The method of claim 30, wherein the rule-based compatibility analysis evaluates business considerations.

51. (New) The method of claim 50, wherein the business considerations comprise an evaluation of physical location, organization department, data segregation requirements, owner, service level agreements, maintenance windows, hardware lease agreements, or software licensing agreements.

52. (New) The method of claim 30, wherein the rule-based compatibility analysis evaluates both technical and business considerations.

53. (New) The method of claim 30, wherein resource utilization data used in evaluating the impact on the resource utilization of the target system of placing that source on that target comprises CPU utilization, memory usage, disk space used, disk I/O throughput or network I/O throughput.

54. (New) The method of claim 53, wherein benchmarks are used to normalize CPU utilization data between source and target systems in order to account for differing CPU performance for different systems.

55. (New) The method of claim 30, wherein the method is implemented remotely from the collection of systems.

56. (New) The method of claim 30, wherein the placement takes into account a pre-existing source-target transfer set, and any placements are incremental to the transfer set.

57. (New) The method of claim 30, wherein the target system onto which the source system is placed is a new system.

58. (New) A non-transitory computer readable medium comprising computer-executable instructions for placing a source system on a target system, comprising instructions for:

- collecting data for a collection of systems, the collection of systems comprising a plurality of source systems and a plurality of target systems;

- evaluating compatibility between any one of the plurality of source systems and any one of the plurality of target systems by evaluating one or more rules that operate against attributes or data relating to the source and target systems being evaluated;

- evaluating compatibility between any two or more of the plurality of source systems by evaluating one or more rules that operate against attributes or data relating to the two or more source systems;

- evaluating compatibility between any one of the plurality of source systems and any one of the plurality of target systems by evaluating the impact on resource utilization of the target system of placing that source system on that target system, in combination with any other source systems, either already placed on that target system, or being evaluated for placement onto that target system;

- determining a placement of at least one source system of the collection of systems on at least one target system of the collection of systems by employing the evaluating operations on any one or more of the systems of the collection of systems; and

- issuing instructions to place the at least one source system on the at least one target system in accordance with the determining.

Amendments to the Drawings

Please replace the drawing sheets containing FIGS. 1, 2, 9-12, 14, 15, 17, 18, 20, 21, 23-25, 29, and 30 with the eighteen (18) replacement drawing sheets submitted herewith.

REMARKS

Applicant thanks the Examiner for reviewing the present application.

Claim 1 has been cancelled and new claims 2-58 have been added to clarify the protection being sought. Support for these amendments can be found throughout the application as filed.

Replacement drawings for FIGS. 1, 2, 9-12, 14, 15, 17, 18, 20, 21, 23-25, 29, and 30 are hereby submitted, which are of improved quality.

Applicant requests early consideration and allowance of the present application.

Respectfully submitted,

/Brett J. Slaney/

Brett J. Slaney
Agent for Applicant
Registration No. 58,772

Date: July 2, 2020

CPST INTELLECTUAL PROPERTY
Brookfield Place
181 Bay Street, Suite 2425
Toronto, Ontario, M5J 2T3
Canada

Tel: 647-478-2428
BSL/

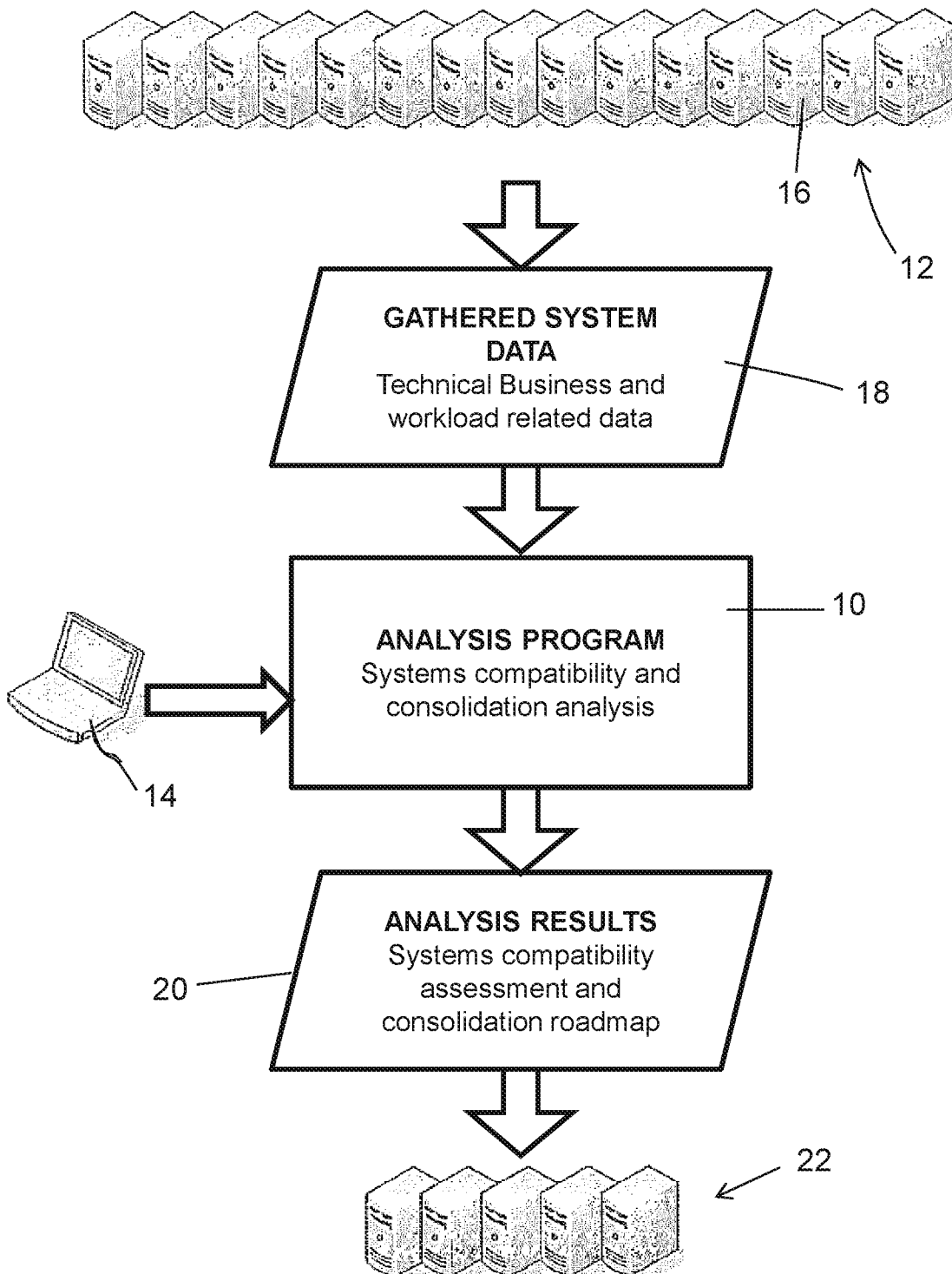


Figure 1

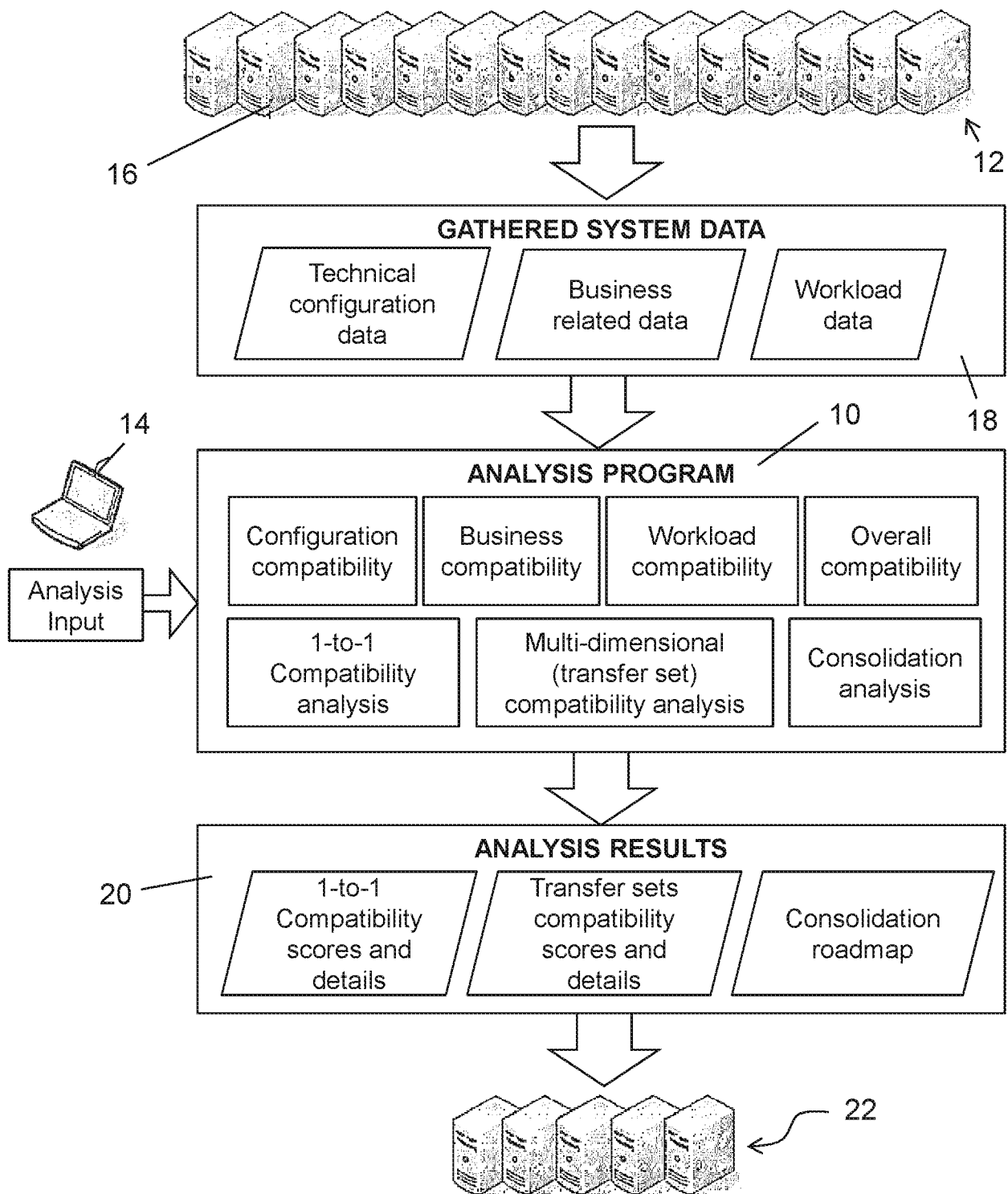


Figure 2

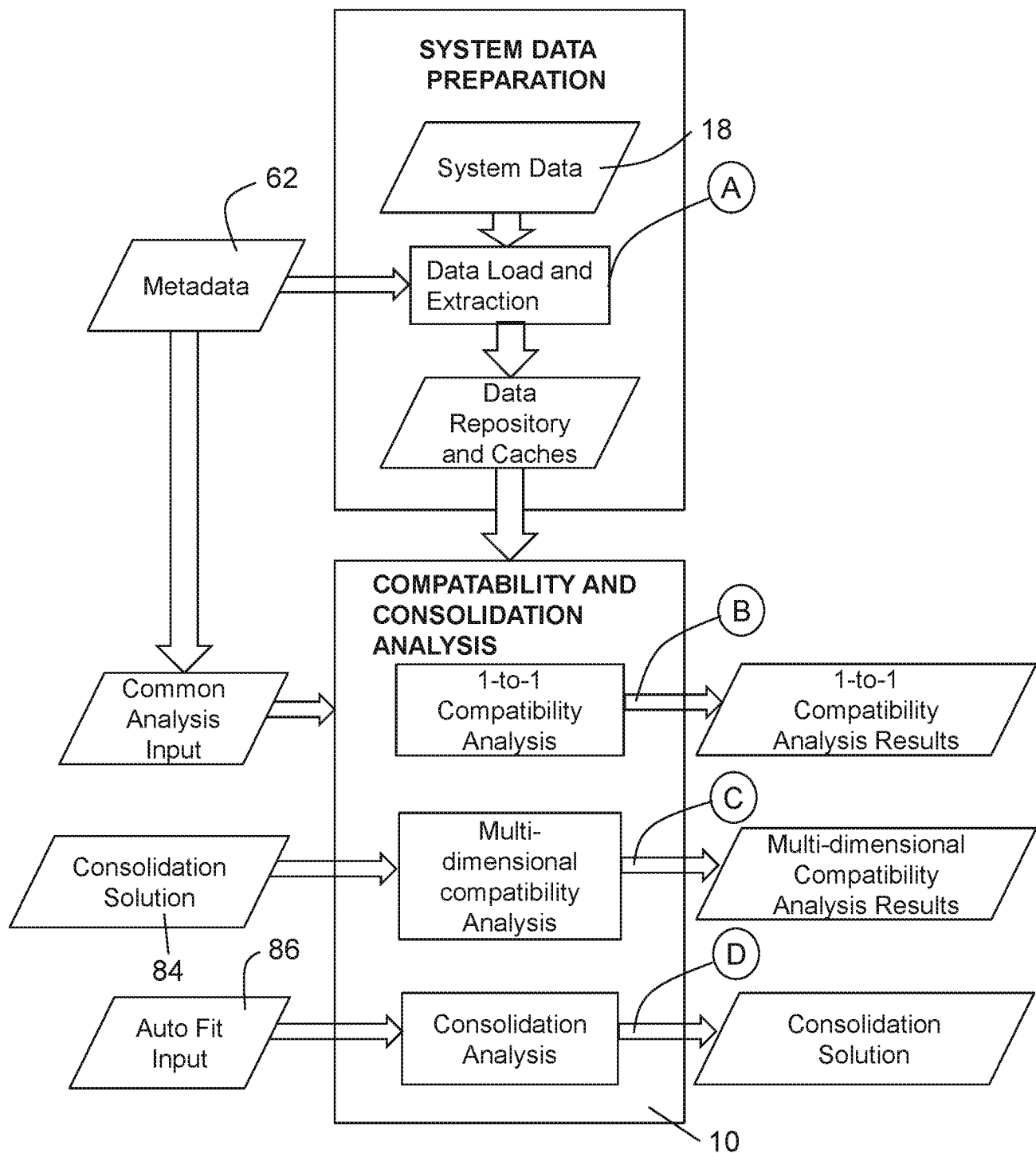


Figure 9

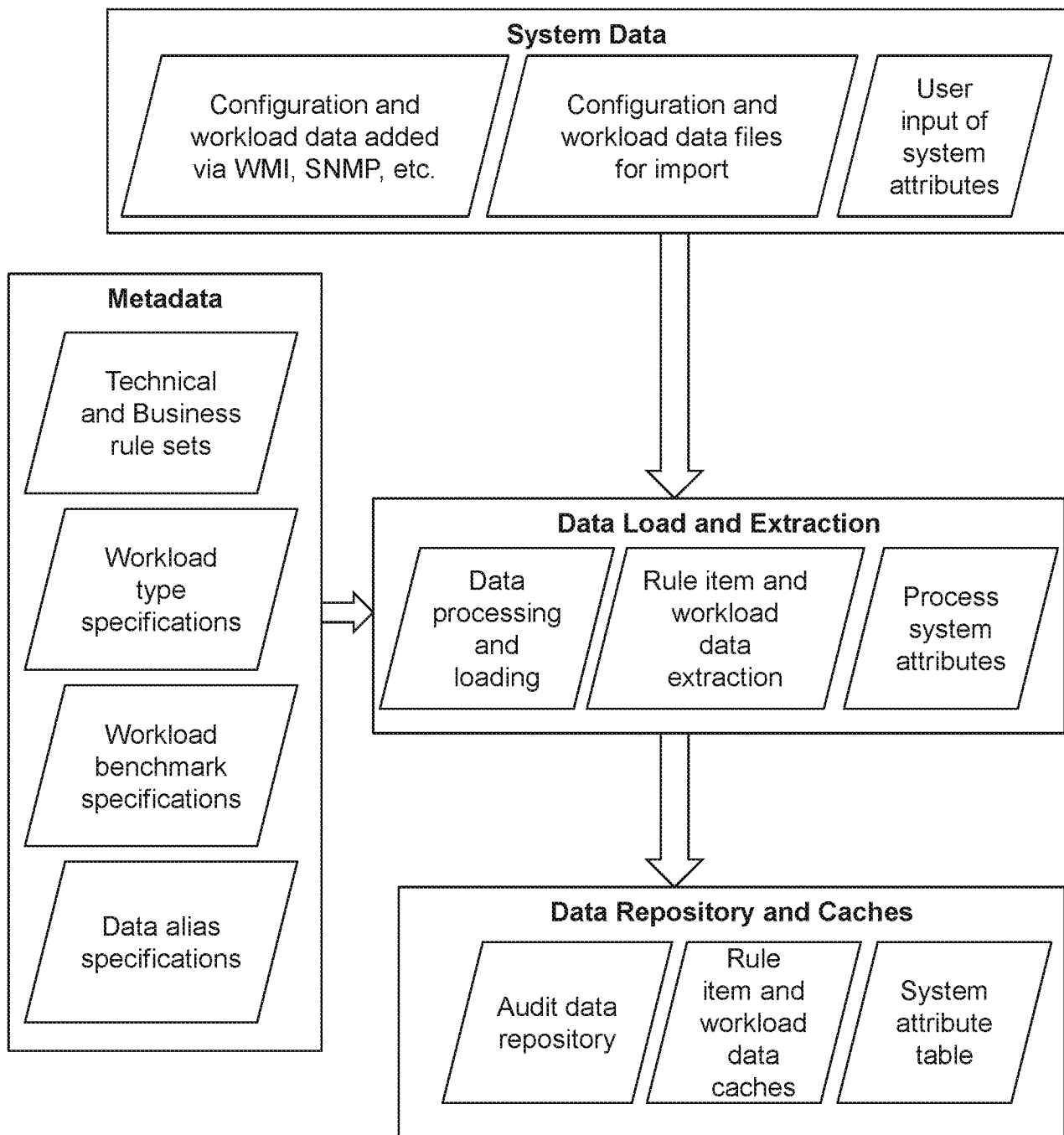


Figure 10

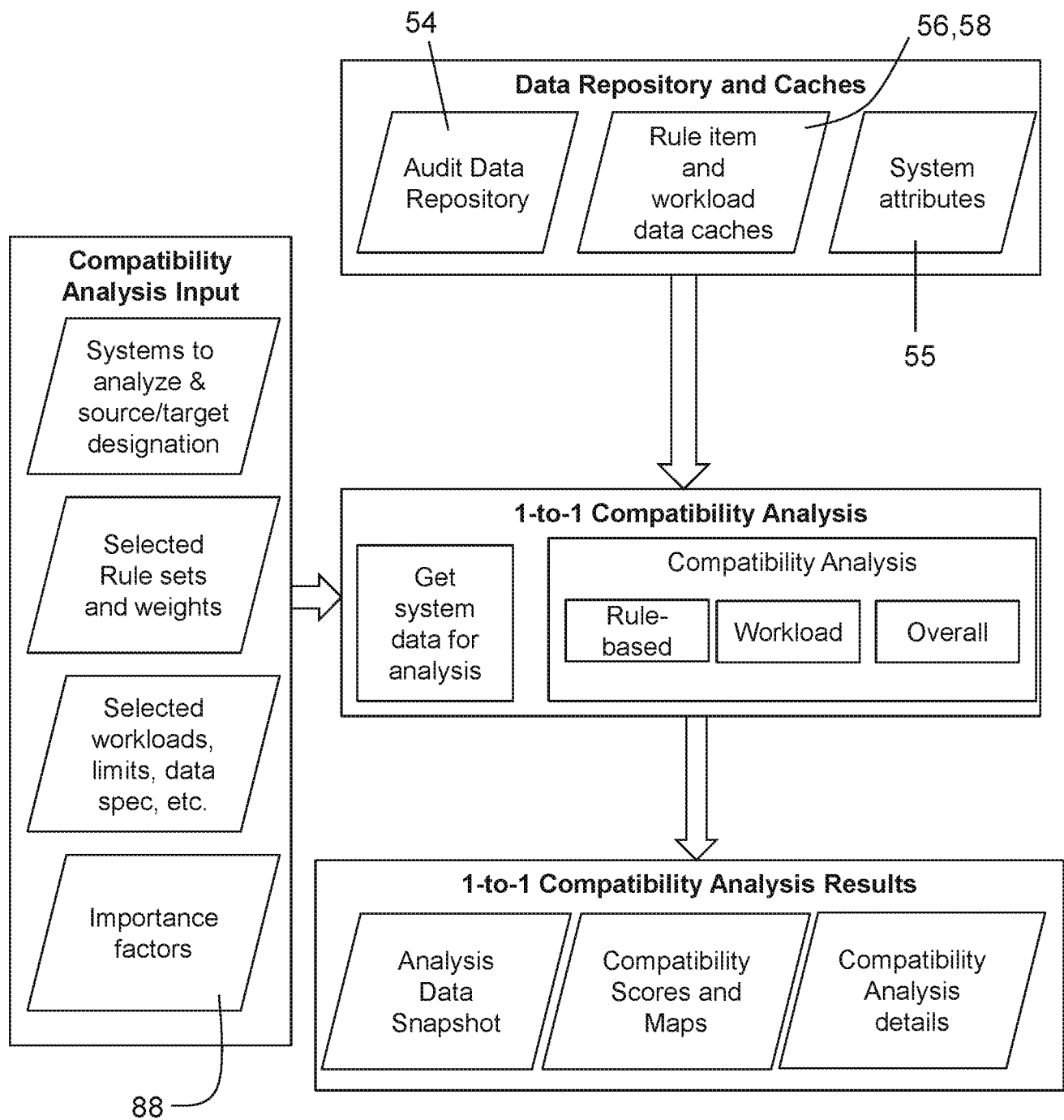


Figure 11

Name	Description
Solaris Kernel Settings	Detailed Analysis of Solaris Kernel Settings
Solaris Name Service Settings	Detailed Analysis of Solaris Name Service Settings
Solaris NVRAM Settings	Detailed Analysis of Solaris EEPROM Settings
UNIX Application Stacking	Detailed analysis rules for OS-level stacking of UNIX apps onto existing or new systems
UNIX Forward Consolidation	Detailed analysis rules for forward consolidation of UNIX applications onto existing infrastructure
WebLogic J2EE App Stacking	WebLogic J2EE Application Stacking Ruleset
Windows Compatibility	Assess compatibility between Windows systems
Acquisition Date	Group servers based on acquisition date
Application Tier	Prevent consolidating servers across application tiers
Availability Target	Prevent combining servers with differing availability (uptime) targets
Backup Window	Prevent combining servers with differing backup windows
Building	Prevent consolidating servers between buildings
Business Service	Prevent consolidating servers across business services
Combined Constraints	Combined business constraint ruleset
Department	Prevent consolidating servers across departments
DR Strategy	Prevent combining servers with inconsistent DR strategies
Lease Renewal Date	Group servers based on lease renewal date
Location	Prevent consolidating servers across physical locations
Maintenance Window	Prevent consolidating servers with contentious maintenance windows
Operational Environment	Prevent consolidating servers between environments
Operational Role	Prevent consolidating servers that have differing functional roles
Ownership	Prevent combining servers that belong to different owners
Primary Application	Prevent combining servers that are servicing different applications
Service Plan	Prevent consolidating servers that have different service plans
UPS Profile	Prevent combining servers that have differing UPS requirements
Oracle Stacking Analysis Data Validation	Determine data coverage for app stacking analysis
UNIX Analysis Data Validation	Determine data coverage for app stacking analysis
Windows Analysis Data Validation	Determine data coverage for windows stacking and virtualization analysis
Oracle Data Stacking	Assess data consolidation potential between Oracle instances
Oracle Instance Stacking	Assess affinity for instance-level stacking
SQL Server 2000 (WMI)	Map out data-level consolidation opportunities in MS SQL 2000 environments
Windows File and Print Consolidation	Analyze compatibility of file and print servers
Hardware Models	Map out manufacturers and models
Macro Analysis	Combined Macro Analysis ruleset
OS Map	Map out OS Types, Versions and kernel patch levels
OS Map (with Kernel Bits)	Map out high-level OS affinity regions

Figure 12

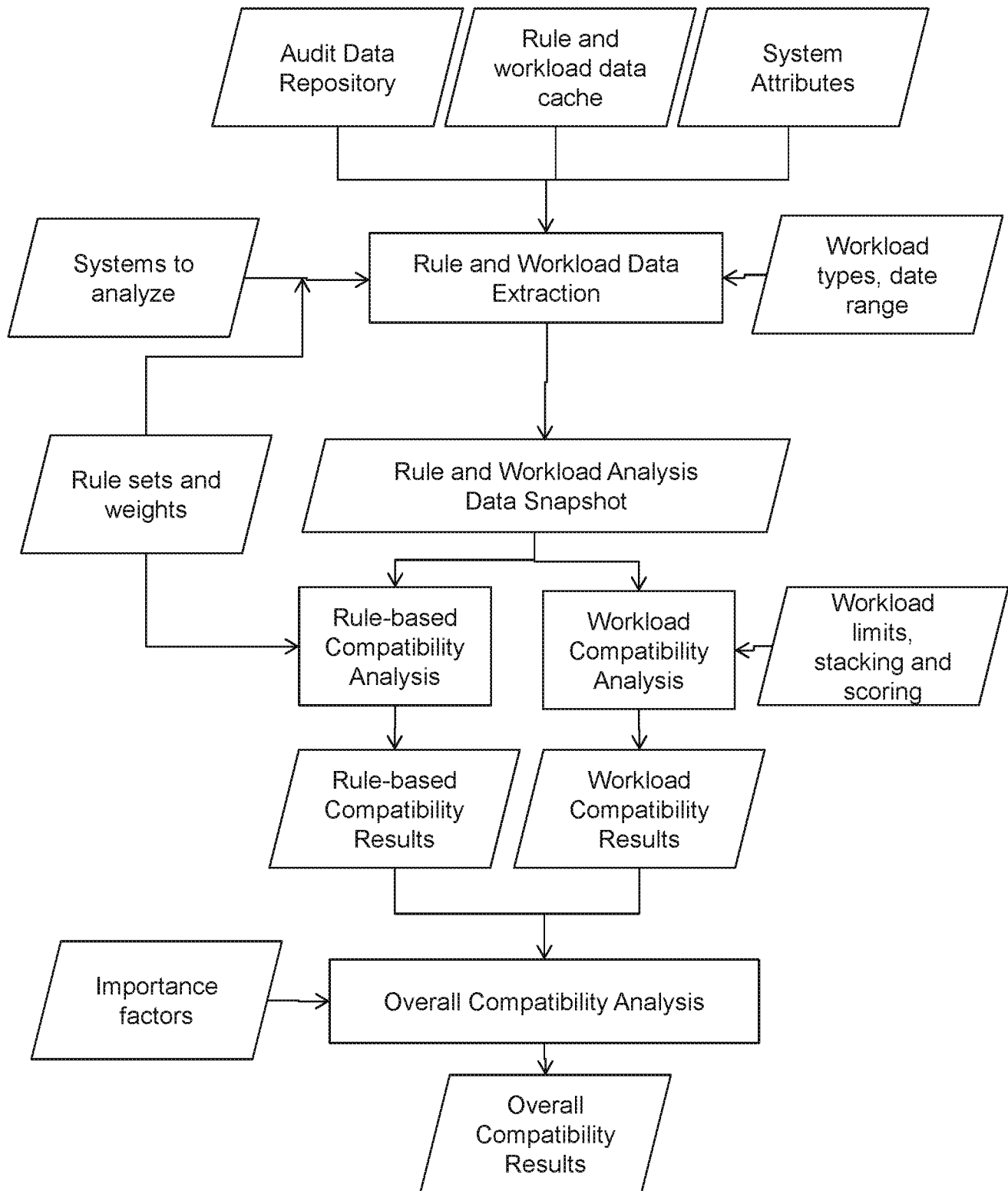


Figure 14

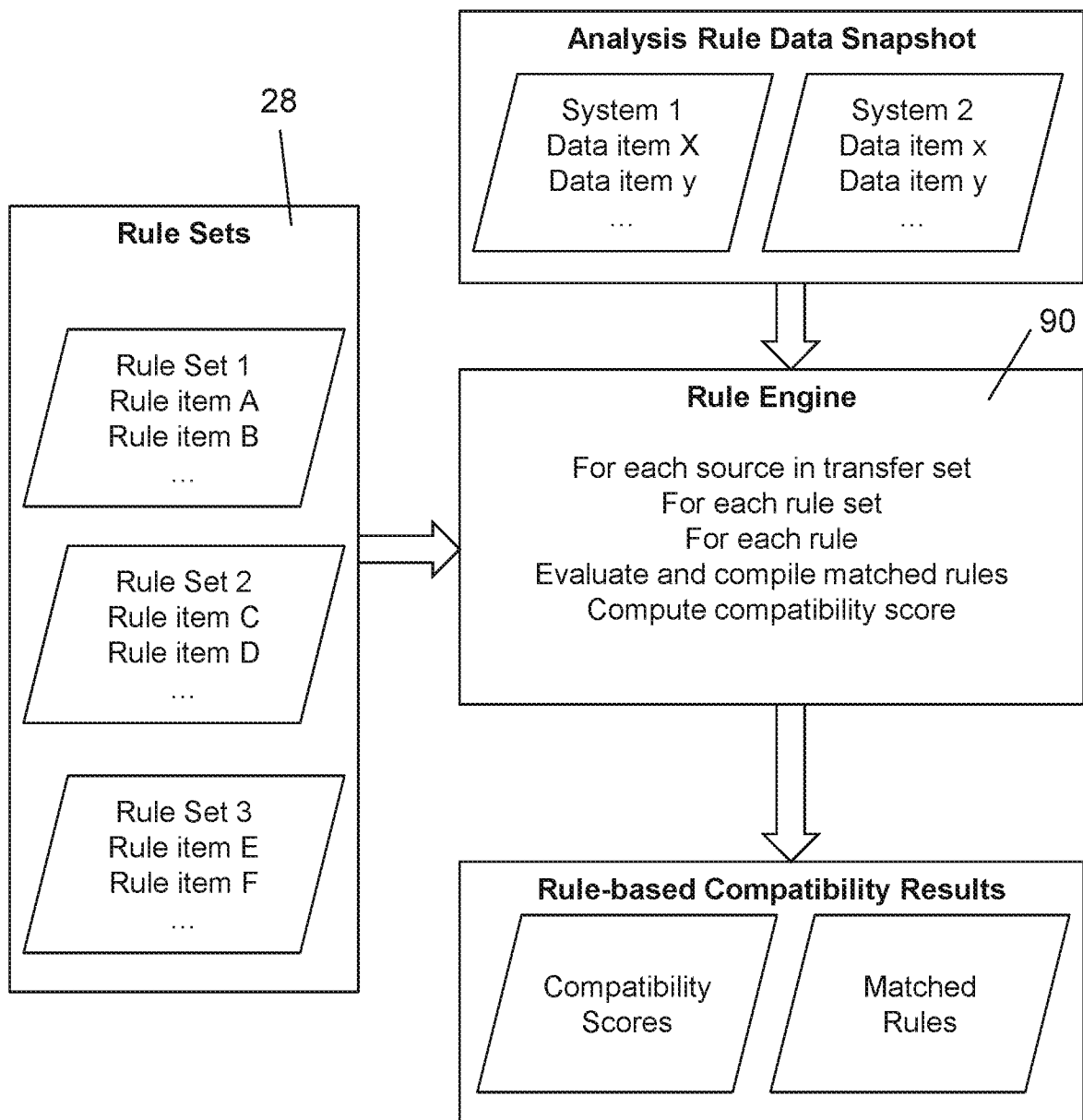


Figure 15

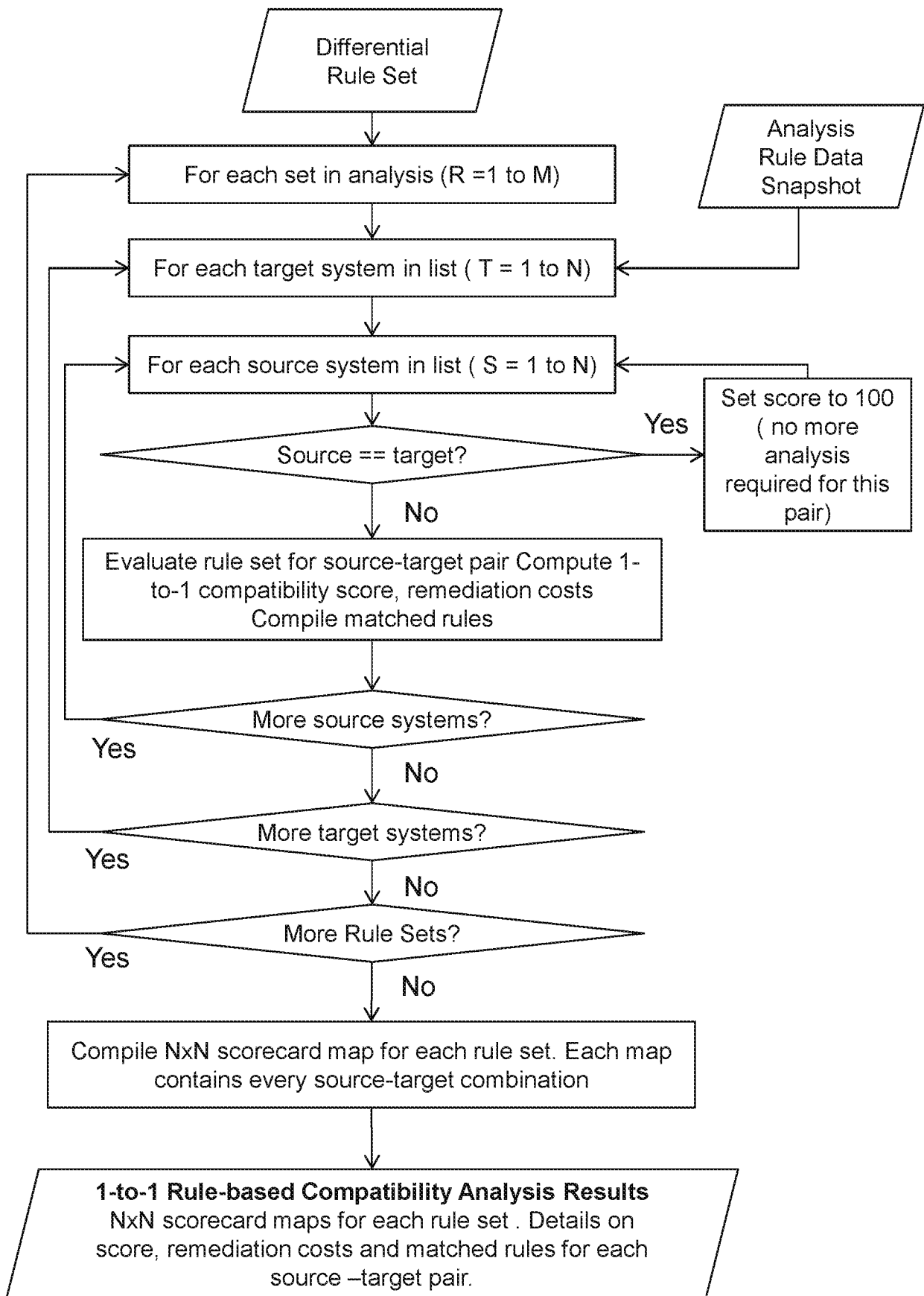


Figure 17

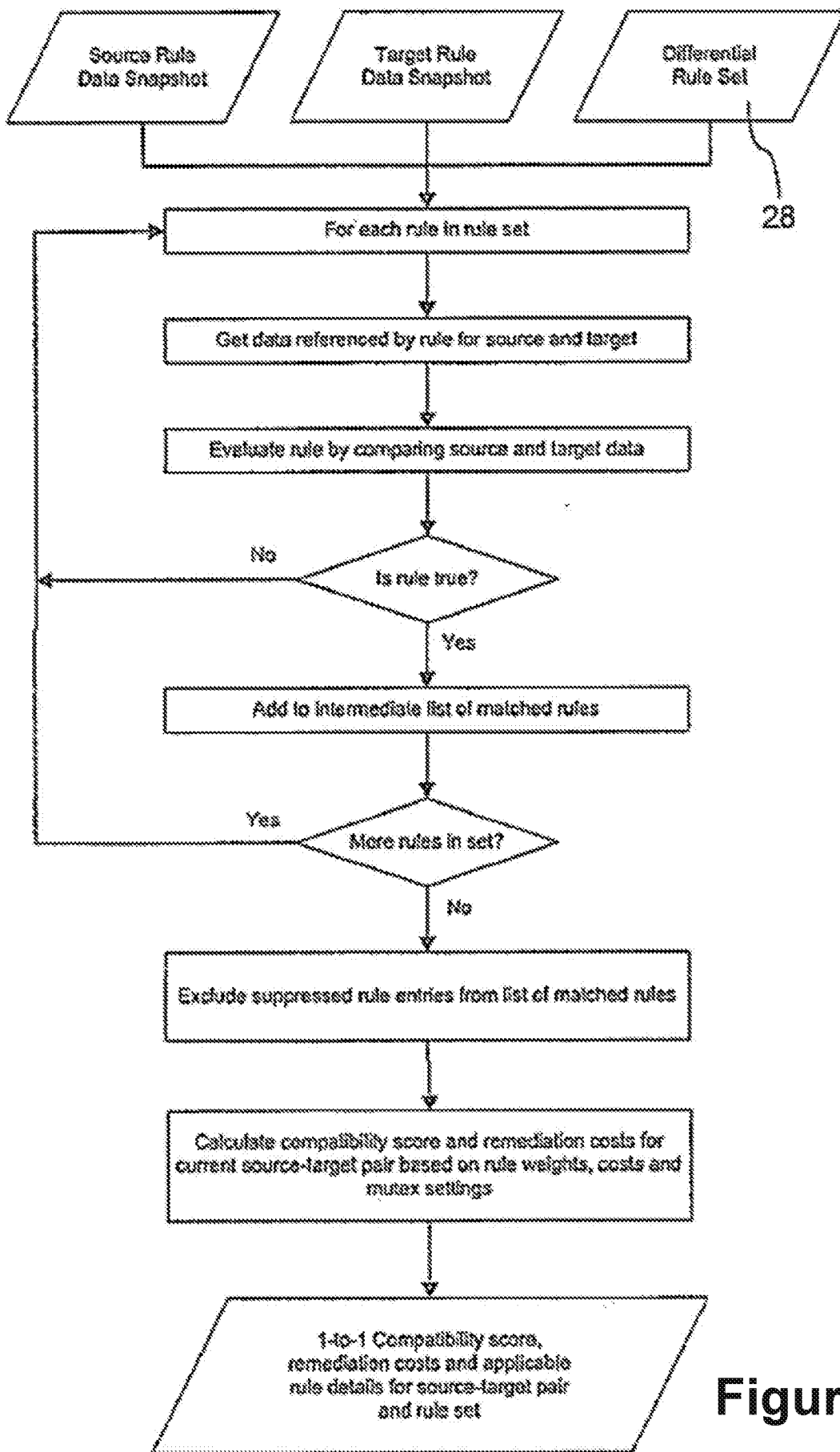


Figure 18

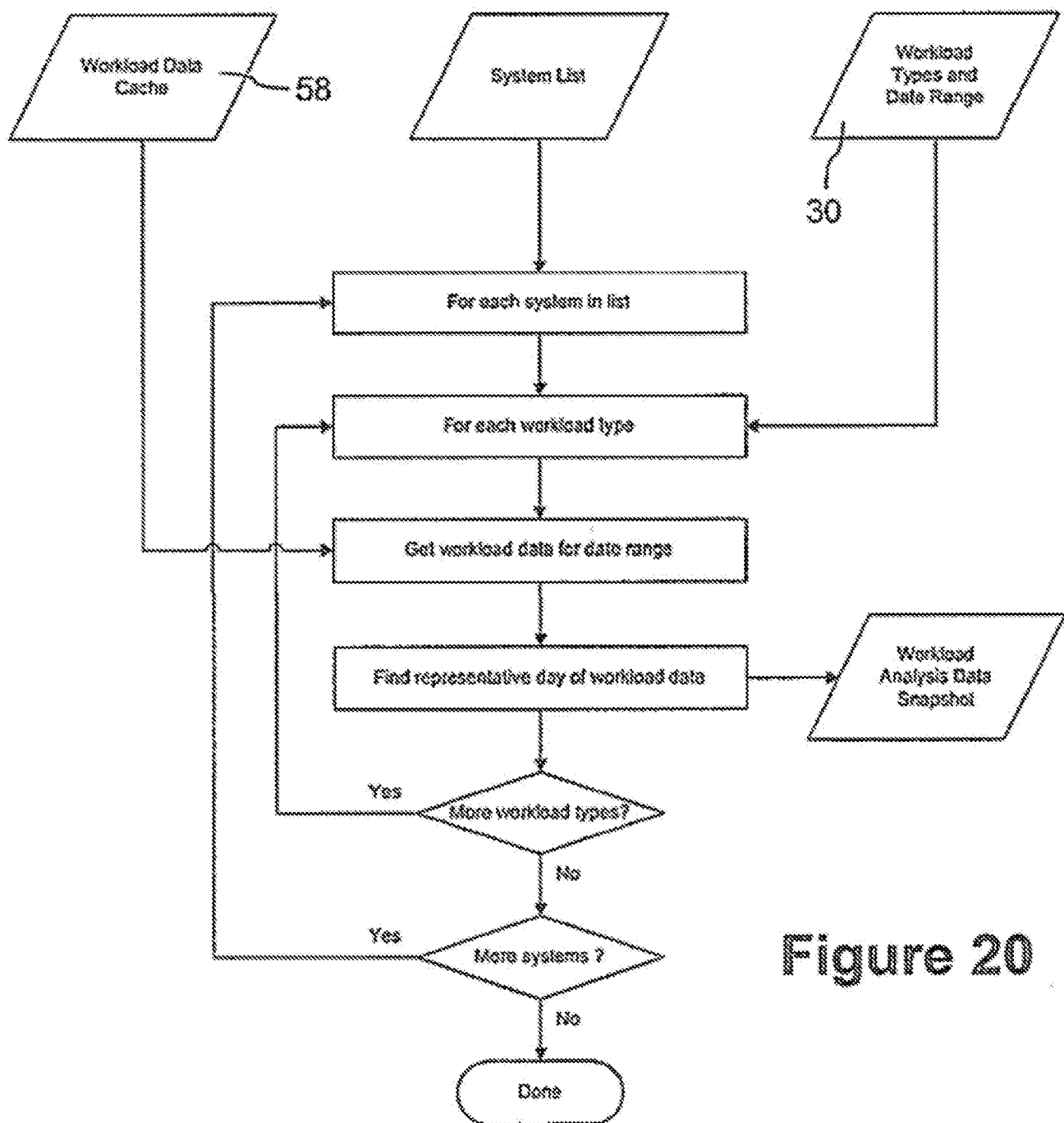


Figure 20

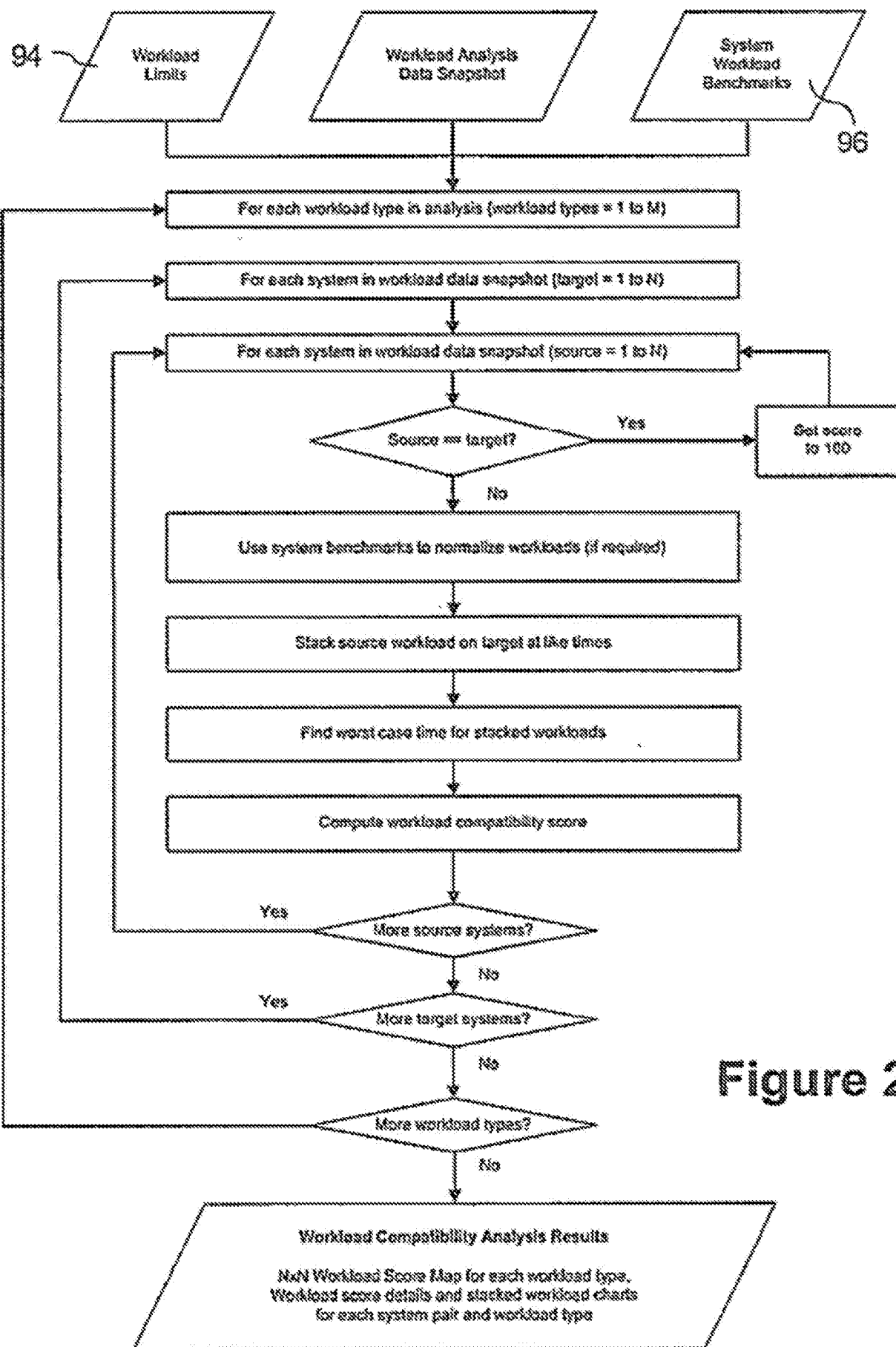


Figure 21

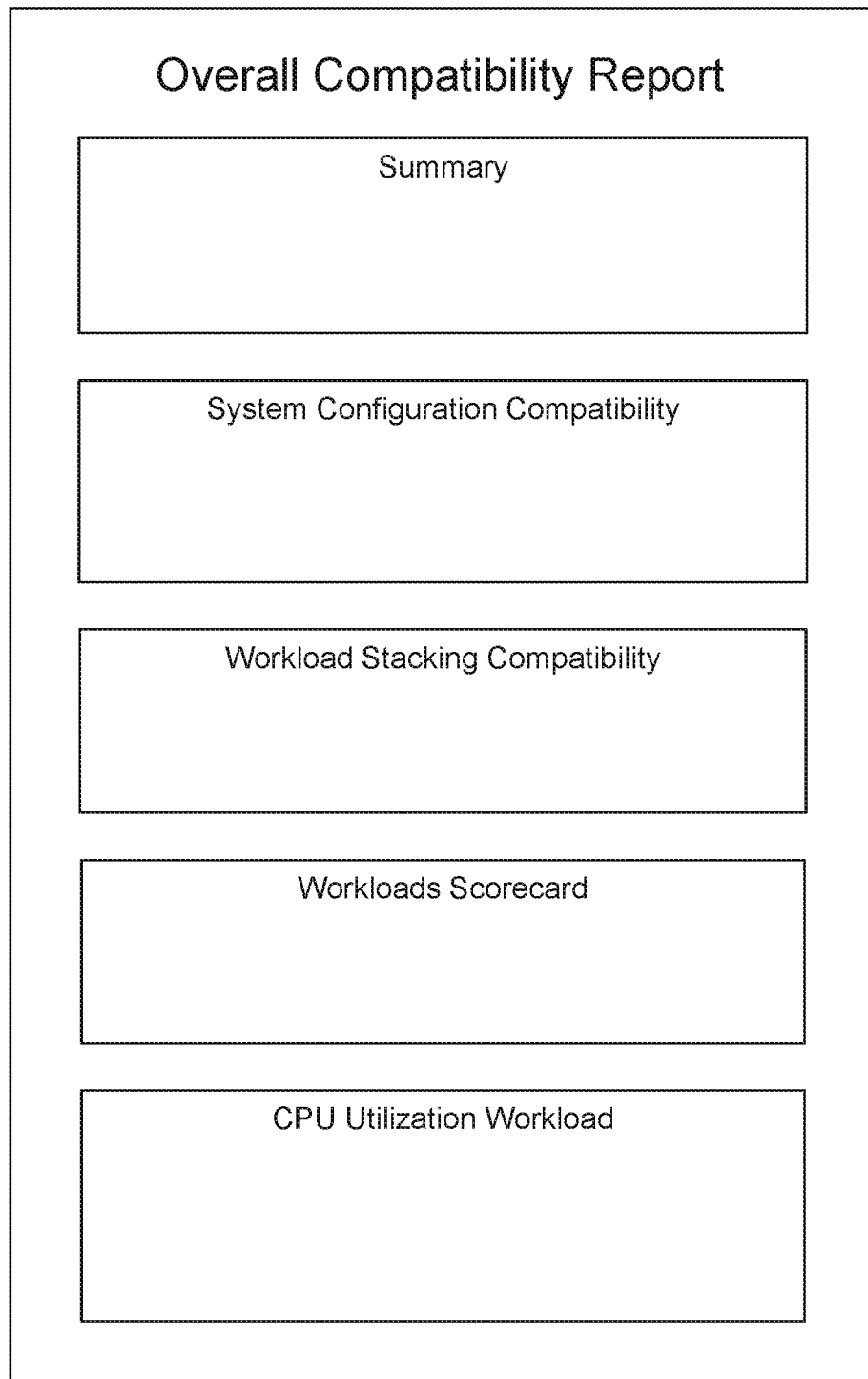


Figure 23

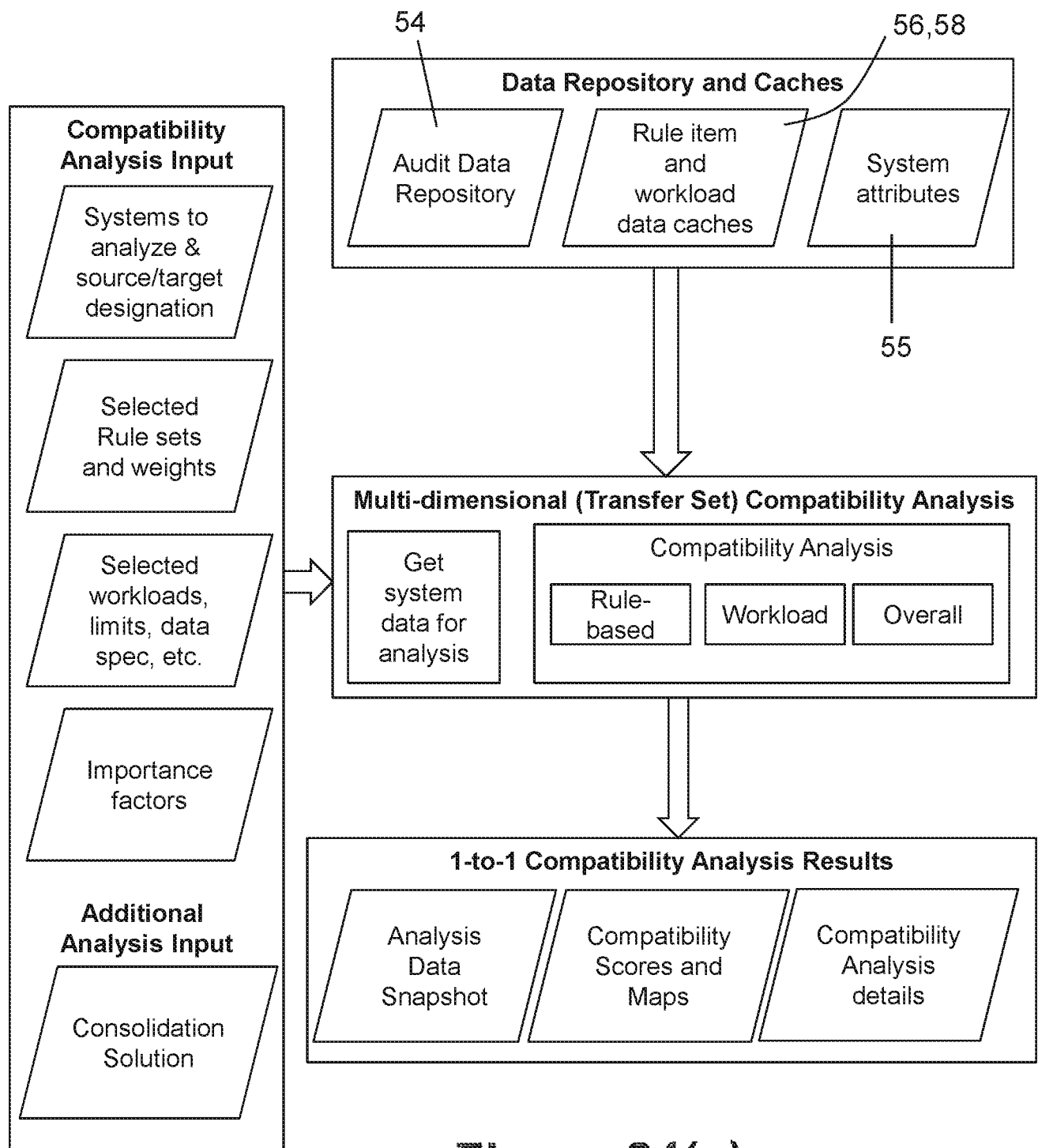


Figure 24(a)

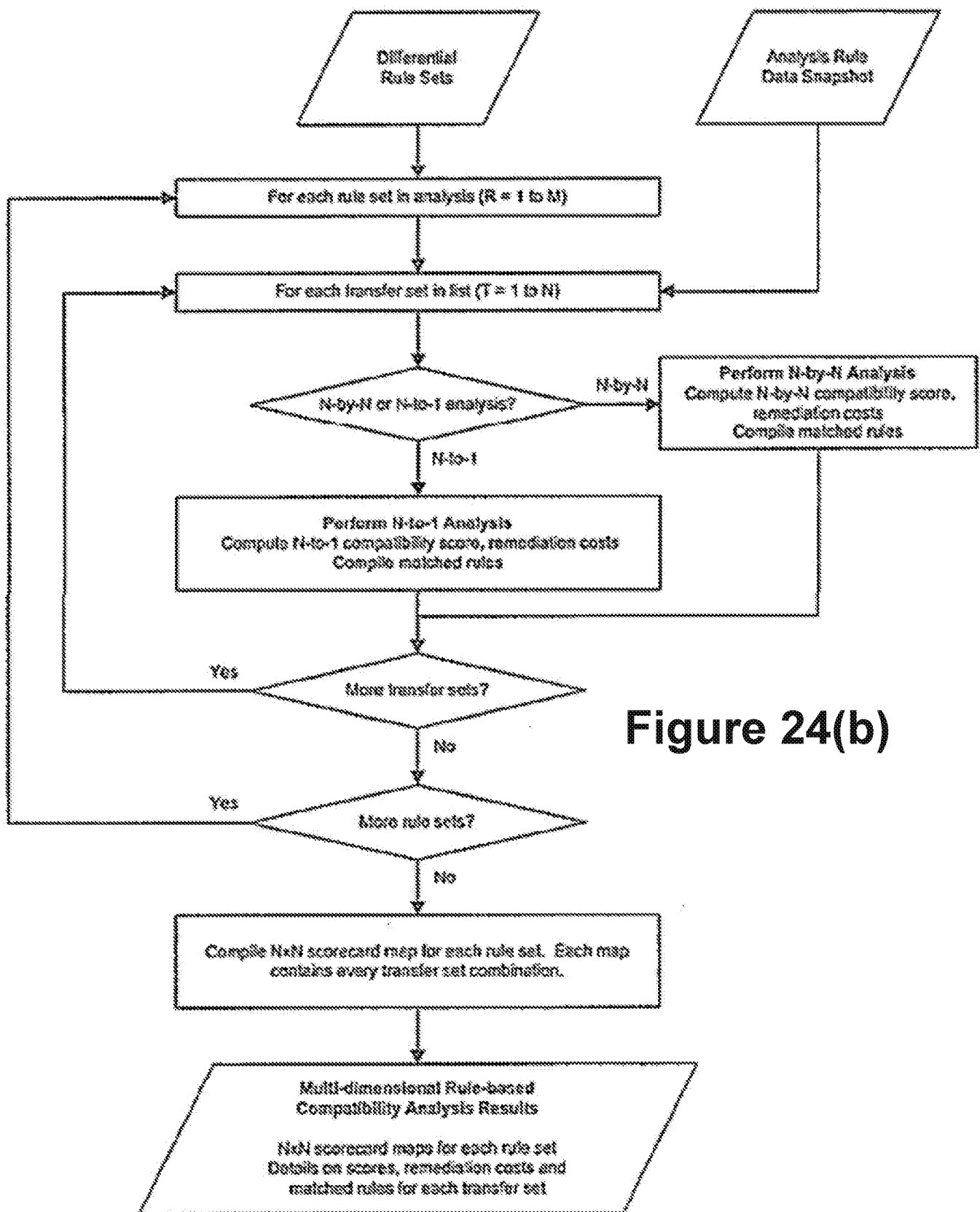


Figure 24(b)

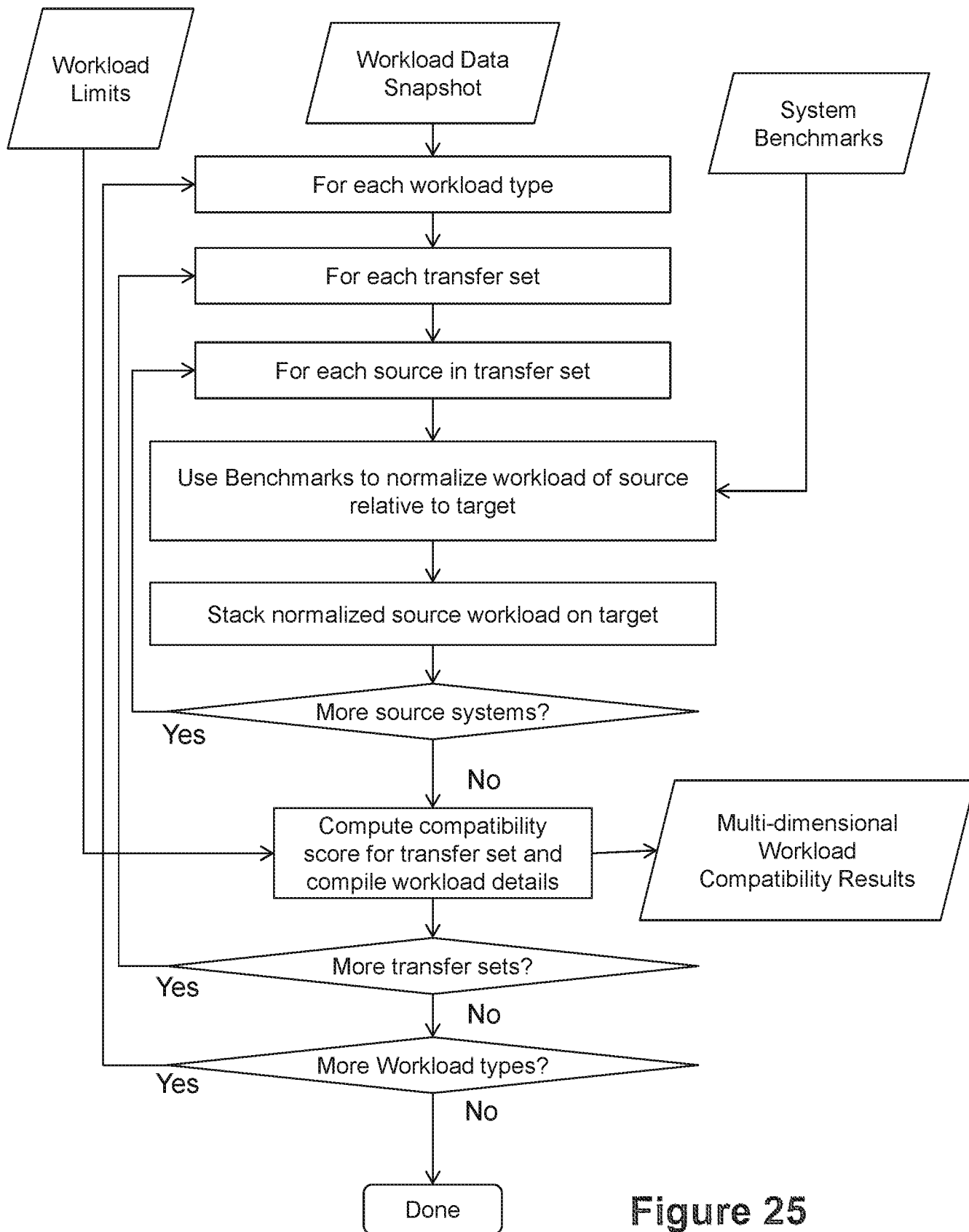


Figure 25

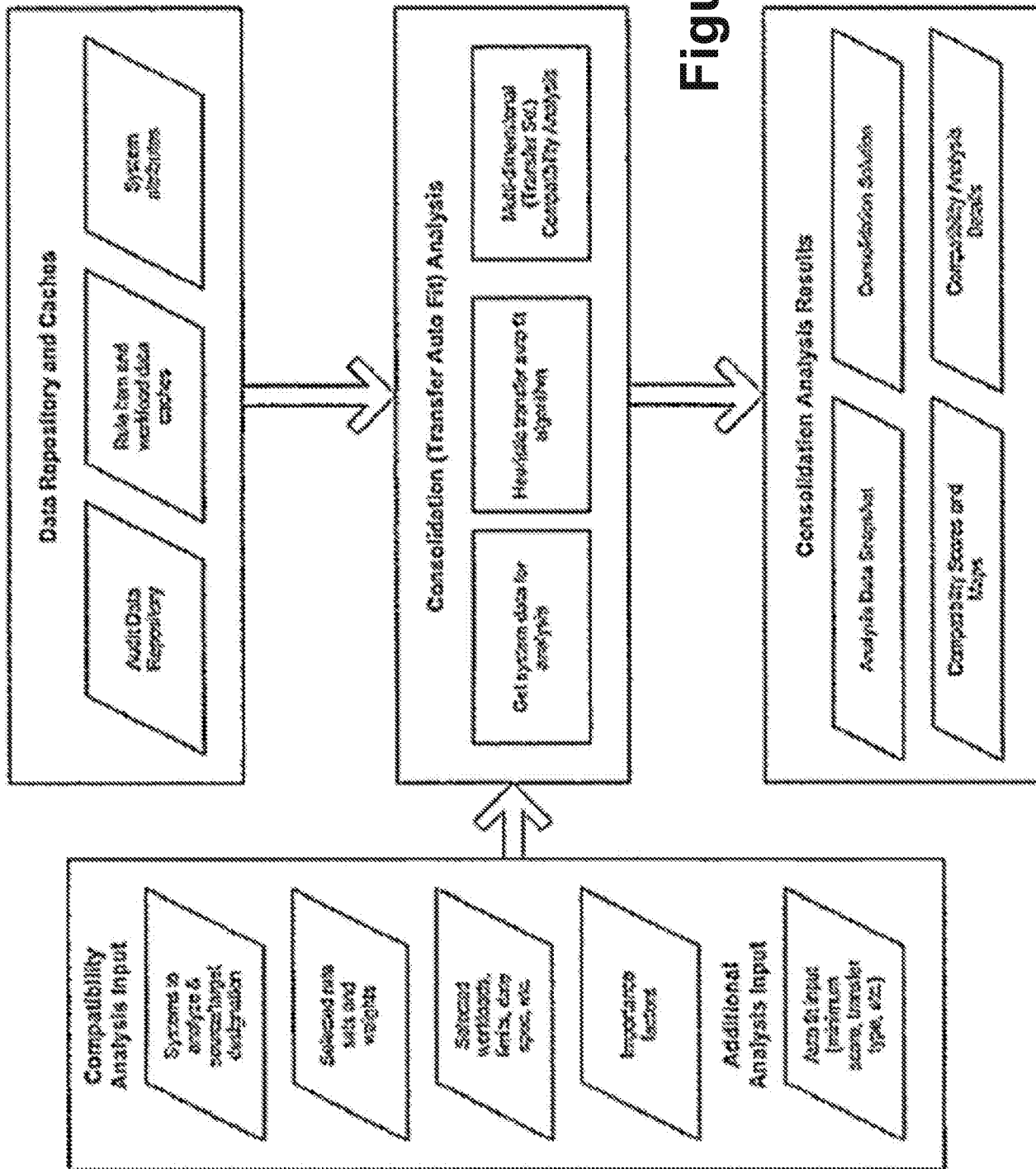


Figure 29

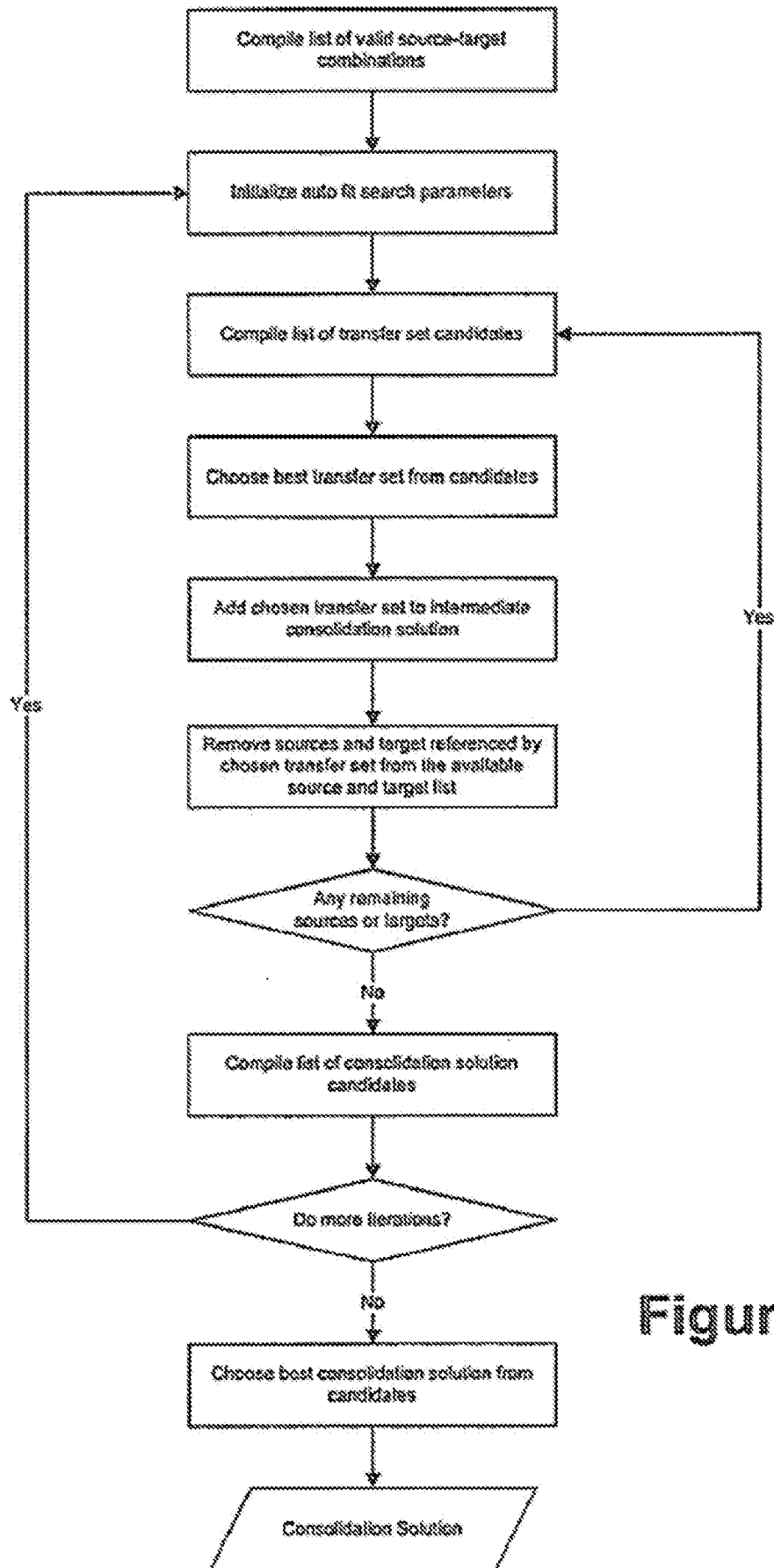


Figure 30