

CAPSULE TECHNOLOGY

Enteric Capsule Drug Delivery Technology – Achieving Protection Without Coating

By: Hassan Benameur, PhD

INTRODUCTION

Enteric capsule drug delivery technology (ECDDT) was developed to provide oral delivery with full enteric protection and rapid release in the upper gastrointestinal (GI) tract without the use of coatings. ECDDT's intrinsically enteric properties are attained by incorporating pharmaceutically approved enteric polymers in the capsule shell using conventional pin-dipping capsule manufacturing processes. By eliminating the preparation and application steps used for enteric coating, ECDDT can offer accelerated development timelines and reduced program risk. ECDDT can also enable the oral delivery of sensitive molecules, such as nucleotides and peptides, biological products such as vaccines, and live biotherapeutic products (LBPs), which can degrade at the high temperatures or can be sensitive to aqueous coating solution associated with pan and fluid bed coating processes. The enteric properties and rapid release of specialized ECDDT capsule shells have been demonstrated to meet pharmacopeia standards for both in vitro and in vivo performance using esomeprazole magnesium trihydrate (EMT) as a model compound.

POTENTIAL BENEFITS OF ECDDT

Oral delivery is routinely cited as the universally preferred route of administration for drug products. Many oral drugs are specifically formulated to allow disintegration only in certain

sections of the GI tract for the purpose of protecting the drug from destruction by gastric acid of the stomach (e.g., proton pump inhibitors), protecting the active from destruction by enzymes of the stomach (e.g., peptides, proteins) or protecting the stomach from an irritant drug (e.g., enteric coated aspirin).¹ Enteric protection has historically been imparted to solid dosage forms by applying a seal coat followed by coating at relatively high weight gains (typically $\geq 10\%$) with pH-sensitive polymer systems using rotary perforated pan coaters or fluidized bed equipment.

The development and scale-up steps associated with enteric coating add complexity, time, and risk to drug programs. An assessment by H2 Pharma Consulting cites the following areas where ECDDT could reduce the complexity of enteric dosage form design and processing:²

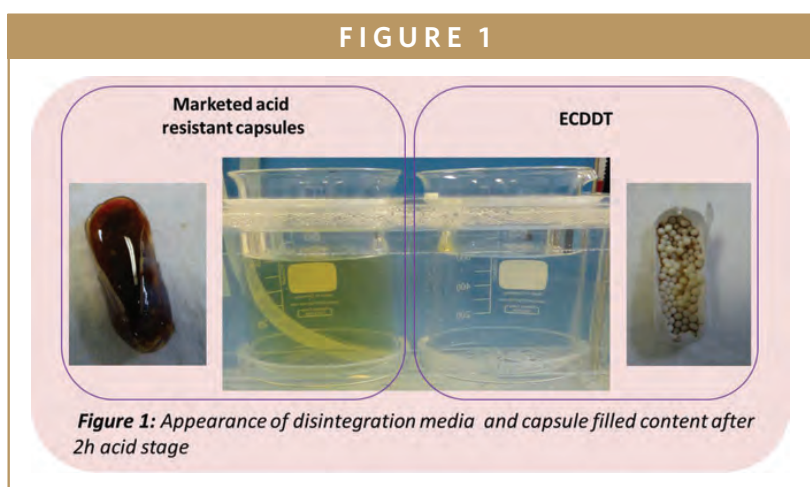
- Simplify selection of enteric formulation composition
- Enable rapid screening and optimization of enteric functional performance
- Reduce/remove dependency of enteric functionality with process variability
- Obviate need for process development of enteric coating step
- Obviate need for process scale-up and validation
- Minimize risk of changes to enteric performance on stability

The assessment further estimated potential savings in overall development time of more than 9 months through Phase III, based on rapid development of prototypes for formulation screening and rapid testing of in vivo performance.

Development risk may also be minimized in several aspects by:

- Removing the need for process development and scale-up of enteric coating
- Limiting the scope of overall process development and validation program
- Removing the dependency between enteric functionality, coating process parameters, and variability
- Minimizing risk of enteric performance changes on scale-up and stability

The major hurdle in oral delivery of many sensitive molecules, such as nucleotides, peptides, live biopharmaceutical products, and vaccines, is protecting the active entity from acidic and enzymatic degradation in the GI tract.³ In some cases, oral delivery can be precluded entirely due to the need for enteric coating. The high temperatures (> 40°C) associated with functional coating application and drying can degrade these sensitive actives and, as such, parenteral or other delivery routes are often required. ECDDT can therefore be enabling for oral delivery of such actives by providing full enteric protection and rapid release in the upper GI tract without coating.



EVALUATION OF ECDDT

The enteric properties of the ECDDT capsules were assessed using esomeprazole magnesium trihydrate (EMT) as the model compound in the form of uncoated pellets. EMT was chosen as a model compound due to both the market relevancy of Nexium® and the high gastric sensitivity of the active. EMT is known to rapidly degrade in acidic media with short-term chemical instability readily identifiable by a yellow/brown discoloration.

A pharmaceutical-grade cellulosic enteric formulation (complying with EP/USP/JP) was prepared using polymer aqueous dispersion or pseudolatex with plasticizer addition to achieve optimal dipping, setting, and film-forming properties for capsule shell production. Intrinsically enteric size 0 white opaque capsules – equivalent in appearance, dimensions, and mechanical properties to conventional two-piece hard capsules – were then manufactured on a full-scale, commercial hard capsule manufacturing machine. These capsules were then evaluated by in vitro testing and in vivo human bio-studies using EMT.

IN VITRO TESTING & RESULTS

ECDDT formulations using EMT were shown compliant with the specifications for both pharmacopeial disintegration and dissolution testing for gastro-resistant dosage forms, as discussed further.

Capsules (n=6) were filled with 20 mg of EMT-layered, uncoated pellets and then evaluated using EP/USP disintegration apparatus type B. The test was performed for 2 hours at acid stage (pH 1.2) without disk and then for 1 hour at buffer stage (pH 6.8) with disk. For comparison purposes, commercially available “acid-resistant” capsules – not designed to be impermeable to fluid ingress in pH 1.2 media – were filled with the same EMT pellets and tested using the same method.

The ECDDT capsules showed no evidence of early disintegration, rupture, or content release, and there was no significant discoloration of the medium after 2 hours in the acid stage (Figure 1). In pH 6.8 buffer, the capsules rapidly disintegrated within 30 minutes in buffer stage. The acid-resistant capsules, however, showed clear evidence of deformation and of content release in the acid stage with rapid yellow/brown

FIGURE 2

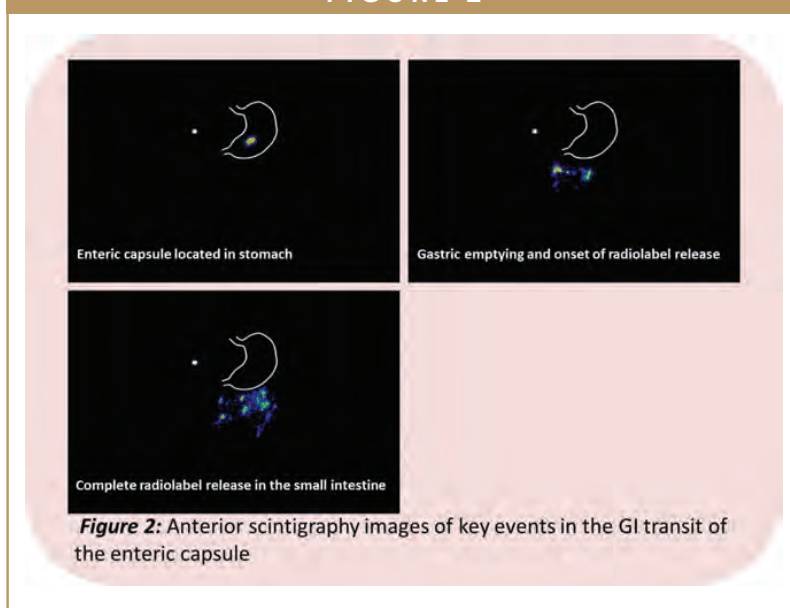


Figure 2: Anterior scintigraphy images of key events in the GI transit of the enteric capsule

discoloration of the medium.

After the acid stage, both capsule samples were cut open to observe the filled contents. The content of commercial acid-resistant capsules consisted of a brown liquid with EMT pellets partially dissolved, demonstrating that a significant amount of acid medium had migrated inside the capsules, resulting in EMT degradation. EMT pellets in ECDDT capsules showed minimal discoloration, indicating little to no degradation.

ECDDT capsules (n=6) filled with EMT pellets were also evaluated according to the EP/USP dissolution test for gastro-resistant dosage forms, using USP apparatus II (paddle). The test was performed at 37°C/100 rpm for 2 hours at acid stage (pH 1.2) and then 1 hour at buffer stage (pH 6.8), with sampling at regular times. The dissolution behavior of Nexium 20-mg delayed-release capsules (n=6) was also evaluated using the same protocol. For the dissolution test, no solubilization of the ECDDT capsules was observed, and each capsule showed less than 0.2% (LOD) of

esomeprazole release after 2 hours in the acid stage and more than 90% of release after 30 minutes in the buffer stage.

HUMAN BIO-STUDY RESULTS

Esomeprazole is known to show fast oral absorption (plasma peak = 1 to 3.5 hours) and a short half-life (1.5 hours). To evaluate in vivo performance for the new technology, ECDDT capsules were filled with EMT-layered uncoated pellets and compared to Nexium capsules (uncoated gelatin capsules containing enteric coated drug-layered multiparticulates) in a randomized, open-label, single-dose, and crossover pharmacokinetic and gamma-pharmacoscintigraphy study using healthy volunteers under fasting state. Radiolabelled (^{99m}Tc) pellets were added in both ECDDT capsules and Nexium hard gelatin capsules size 0 in order to detect the location of capsule opening and content release in the gut

through the GI tract. Blood samples were taken at pre-dose and then at regular times post-dose over 12 hours, and anterior and posterior images were acquired at dosing and then post-dose over 12 hours.

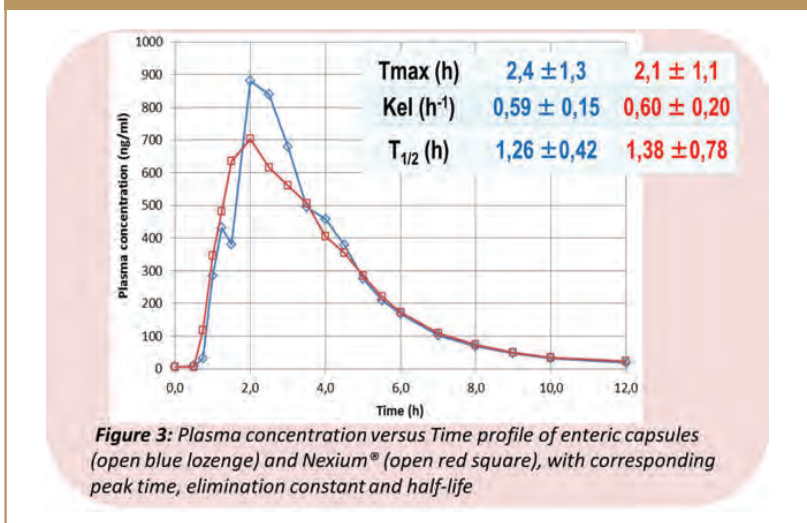
In vivo results (Figure 2) showed that no pellets were released from ECDDT capsules in the stomach and that the capsule quickly opened in the small intestine 30 minutes from gastric emptying to the onset of drug release from the pellet dissolution. Nexium capsules, opened and released their content in the stomach before gastric emptying.

The PK profiles of ECDDT capsules and Nexium capsules showed similar rates of drug absorption, particularly in terms of peak time T_{max} , elimination constant k_{el} and half-life $t_{1/2}$ (Figure 3). Overall bioavailability of EMT was increased using ECDDT capsule formulations, with C_{max} and AUC increased by 56% and 32%, respectively, in comparison to Nexium.

SUMMARY

Enteric capsule drug delivery technology utilizes a pharmaceutical-grade cellulosic enteric formulation as an aqueous dispersion to produce capsule shells by conventional capsule manufacturing technology pin-dipping. The enteric properties of capsules have been evaluated in vitro and the results shown to comply with pharmacopeial disintegration and dissolution tests criteria. It has been demonstrated with both in vitro testing and in vivo by human gamma-pharmacoscintigraphy that ECDDT capsules protect EMT from

FIGURE 3



gastric degradation, do not open in the stomach, and provide fast release in the duodenum.

ECDDT represents a new, faster, and easier means for oral delivery of labile entities, such as peptides, nucleotides, live biopharmaceutical products, and vaccines. Integrated enteric functionality in a capsule dosage form enables new possibilities for rapid prototype development and formulation screening, allows rapid testing of in vivo performance and minimizes the risk of out-of-specification events during enteric performance challenges on manufacturing scale-up and stability trials. Avoiding the high temperatures associated with enteric coating application can also enable oral delivery of actives that require enteric protection but are sensitive to thermal degradation.

ECDDT trials are underway to further evaluate the technology's range and application, including oral live biopharmaceutical products, vaccines, and oral peptide products from preclinical to Phase III. ♦

To view this issue and all back issues online, please visit www.drug-dev.com.

REFERENCES

1. Pawar VK, Meher JG, Singh Y, Chaurasia M, Reddy BS, Chourasia MK. Targeting of gastrointestinal tract for amended delivery of protein/peptide therapeutics: strategies and industrial perspectives. *Int J Pharm.* 2014;196:168-183.
2. H2 Pharma Consulting, Ltd. (Maidstone, Kent ME14 5FR, UK).
3. Choonara BF, Choonara YE, Kumar P, Bijukumar D, du Toit LC, Pillay VA. Review of advanced oral drug delivery technologies facilitating the protection and absorption of protein and peptide molecules. *Biotechnology Advances.* 2014;32:1269-1282.

BIOGRAPHY



Dr. Hassan Benameur is Senior Director of Pharmaceutical Sciences at Capsugel. He joined Capsugel in 2002 and currently leads the company's pharmaceutical sciences department. Prior to joining Capsugel, he held various positions in Pharmaceutical Research & Development within Therapeutics, SMB Galephar, and Gattefossé. With more than 20 years of expertise in conventional and advanced drug delivery development, Dr. Benameur brings insightful science into innovative dosage forms and uses drug delivery technology to maximize success and reduce attrition in product development, from preformulation to manufacturing using a systematic and rational approach. Dr. Benameur is a lecturer at several academic and industrial symposia and was presented the Academy of Pharmaceutical Science and Technology, Japan Award in 2005. He is a member of several major scientific associations, including AAPS, APGI, BCRG, PSTJ, and CRS and scientific academies. He has also authored 40 scientific publications and the inventor of 20 patents. Dr. Benameur is a Chemical Engineer and earned his PhD in Pharmaceutical Sciences from the Free University of Belgium.

Patented Cyclodextrin Soon to be in 9-Approved Products

Drug Development & Delivery

Subscription Services | Article Guidelines | Contact Us |
About Us



NEWS

BACK ISSUES

EXECUTIVE INTERVIEWS

MEDIA PLANNER

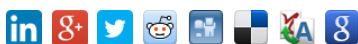
RESOURCE DIRECTORY

EVENTS

SEARCH



Share this story:



Issue: June 2015, Posted Date: 6/2/2015

CAPSULE TECHNOLOGY - Enteric Capsule Drug Delivery Technology - Achieving Protection Without Coating

INTRODUCTION

Enteric capsule drug delivery technology (ECDDT) was developed to provide oral delivery with full enteric protection and rapid release in the upper gastrointestinal (GI) tract without the use of coatings. ECDDT's intrinsically enteric properties are attained by incorporating pharmaceutically approved enteric polymers in the capsule shell using conventional pin-dipping capsule manufacturing processes. By eliminating the preparation and application steps used for enteric coating, ECDDT can offer accelerated development timelines and reduced program risk. ECDDT can also enable the oral delivery of sensitive molecules, such as nucleotides and peptides, biological products such as vaccines, and live biotherapeutic products (LBPs), which can degrade at the high temperatures or can be sensitive to aqueous coating solution associated with pan and fluid bed coating processes. The enteric properties and rapid release of specialized ECDDT capsule shells have been demonstrated to meet pharmacopeia standards for both in vitro and in vivo performance using esomeprazole magnesium trihydrate (EMT) as a model compound.

POTENTIAL BENEFITS OF ECDDT

Oral delivery is routinely cited as the universally preferred route of administration for drug products. Many oral drugs are specifically formulated to allow disintegration only in certain sections of the GI tract for the purpose of protecting the drug from destruction by gastric acid of the stomach (e.g., proton pump inhibitors), protecting the active from destruction by enzymes of the stomach (e.g., peptides, proteins) or protecting the stomach from an irritant drug (e.g., enteric coated aspirin).¹ Enteric protection has historically been imparted to solid dosage forms by applying a seal coat followed by coating at relatively high weight gains (typically $\geq 10\%$) with pH-sensitive polymer systems using rotary perforated pan coaters or fluidized bed equipment.

The development and scale-up steps associated with enteric coating add complexity, time, and risk to drug programs. An assessment by H2 Pharma Consulting cites the following areas where ECDDT could reduce the complexity of enteric dosage form design and processing:²

- Simplify selection of enteric formulation composition
- Enable rapid screening and optimization of enteric functional performance
- Reduce/remove dependency of enteric functionality with process variability
- Obviate need for process development of enteric coating step
- Obviate need for process scale-up and validation
- Minimize risk of changes to enteric performance on stability

The assessment further estimated potential savings in overall development time of more than 9 months through Phase III, based on rapid development of prototypes for formulation screening and rapid testing of in vivo performance.

Development risk may also be minimized in several aspects by:

- Removing the need for process development and scale-up of enteric coating
- Limiting the scope of overall process development and validation program
- Removing the dependency between enteric functionality, coating process parameters, and variability
- Minimizing risk of enteric performance changes on scale-up and stability

The major hurdle in oral delivery of many sensitive molecules, such as nucleotides, peptides, live biopharmaceutical products, and vaccines, is protecting the active entity from acidic and enzymatic degradation in the GI tract.³ In some cases, oral delivery can be precluded entirely due to the need for enteric coating. The high temperatures ($>40^{\circ}\text{C}$) associated with functional coating application and drying can degrade these sensitive actives and, as such, parenteral or other delivery routes are often required. ECDDT can

Video Spotlight



Resource Directory



Company Profiles

- [Ashland](#)
- [Baxter](#)
- [BioSpectra](#)
- [Capsugel](#)
- [Captisol](#)
- [Catalent](#)
- [Croda](#)
- [DPT](#)
- [EMD Millipore](#)
- [Foster Delivery Science](#)
- [Lyophilization Technology Inc](#)
- [Metrics](#)
- [Norwich](#)
- [Pfanziehl](#)
- [PharmaCircle](#)
- [SIO2](#)
- [Teleflex](#)
- [Vetter](#)
- [West](#)
- [Xcellence](#)

Technology & Services Showcase

[Click here to see the showcases](#)

Industry Events

[Controlled Release Society Meeting](#)

July 26-29 Edinburgh, Scotland

[Partnerships in Drug Delivery](#)
October 5-6 Boston MA.



PREFILLED
SYRINGES

Smart
Delivery
Solutions





therefore be enabling for oral delivery of such actives by providing full enteric protection and rapid release in the upper GI tract without coating.

EVALUATION OF ECDDT

The enteric properties of the ECDDT capsules were assessed using esomeprazole magnesium trihydrate (EMT) as the model compound in the form of uncoated pellets. EMT was chosen as a model compound due to both the market relevancy of Nexium® and the high gastric sensitivity of the active. EMT is known to rapidly degrade in acidic media with short-term chemical instability readily identifiable by a yellow/brown discoloration.

A pharmaceutical-grade cellulosic enteric formulation (complying with EP/USP/JP) was prepared using polymer aqueous dispersion or pseudolatex with plasticizer addition to achieve optimal dipping, setting, and film-forming properties for capsule shell production. Intrinsically enteric size 0 white opaque capsules – equivalent in appearance, dimensions, and mechanical properties to conventional two-piece hard capsules – were then manufactured on a full-scale, commercial hard capsule manufacturing machine. These capsules were then evaluated by in vitro testing and in vivo human bio-studies using EMT.

IN VITRO TESTING & RESULTS

ECDDT formulations using EMT were shown compliant with the specifications for both pharmacopeial disintegration and dissolution testing for gastro-resistant dosage forms, as discussed further.

Capsules (n=6) were filled with 20 mg of EMT-layered, uncoated pellets and then evaluated using EP/USP disintegration apparatus type B. The test was performed for 2 hours at acid stage (pH 1.2) without disk and then for 1 hour at buffer stage (pH 6.8) with disk. For comparison purposes, commercially available "acid-resistant" capsules – not designed to be impermeable to fluid ingress in pH 1.2 media – were filled with the same EMT pellets and tested using the same method.

The ECDDT capsules showed no evidence of early disintegration, rupture, or content release, and there was no significant discoloration of the medium after 2 hours in the acid stage (Figure 1). In pH 6.8 buffer, the capsules rapidly disintegrated within 30 minutes in buffer stage. The acid-resistant capsules, however, showed clear evidence of deformation and of content release in the acid stage with rapid yellow/brown discoloration of the medium.



After the acid stage, both capsule samples were cut open to observe the filled contents. The content of commercial acid-resistant capsules consisted of a brown liquid with EMT pellets partially dissolved, demonstrating that a significant amount of acid medium had migrated inside the capsules, resulting in EMT degradation. EMT pellets in ECDDT capsules showed minimal discoloration, indicating little to no degradation.

ECDDT capsules (n=6) filled with EMT pellets were also evaluated according to the EP/USP dissolution test for gastro-resistant dosage forms, using USP apparatus II (paddle). The test was performed at 37°C/100 rpm for 2 hours at acid stage (pH 1.2) and then 1 hour at buffer stage (pH 6.8), with sampling at regular times. The dissolution behavior of Nexium 20-mg delayed-release capsules (n=6) was also evaluated using the same protocol. For the dissolution test, no solubilization of the ECDDT capsules was observed, and each capsule showed less than 0.2% (LOD) of esomeprazole release after 2 hours in the acid stage and more than 90% of release after 30 minutes in the buffer stage.

HUMAN BIO-STUDY RESULTS

Esomeprazole is known to show fast oral absorption (plasma peak = 1 to 3.5 hours) and a short half-life (1.5 hours). To evaluate in vivo performance for the new technology, ECDDT capsules were filled with EMT-layered uncoated pellets and compared to Nexium capsules (uncoated gelatin capsules containing enteric coated drug-layered multiparticulates) in a randomized, open-label, single-dose, and crossover pharmacokinetic and gamma-pharmacoscintigraphy study using healthy volunteers under fasting state. Radiolabelled (99mTc) pellets were added in both ECDDT capsules and Nexium hard gelatin capsules size 0 in order to detect the location of capsule opening and content release in the gut through the GI tract. Blood samples were taken at pre-dose and then at regular times post-dose over 12 hours, and anterior and posterior images were acquired at dosing and then post-dose over 12 hours.

In vivo results (Figure 2) showed that no pellets were released from ECDDT capsules in the stomach and that the capsule quickly opened in the small intestine 30 minutes from gastric emptying to the onset of drug release from the pellet dissolution. Nexium capsules, opened and released their content in the stomach before gastric emptying.



The PK profiles of ECDDT capsules and Nexium capsules showed similar rates of drug absorption, particularly in terms of peak time T_{max}, elimination constant k_{el} and half-life t_{1/2} (Figure 3). Overall bioavailability of EMT was increased using ECDDT capsule formulations, with C_{max} and AUC increased by 56% and 32%, respectively, in comparison to Nexium.



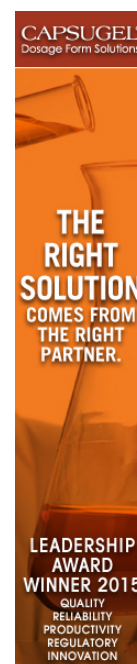
SUMMARY

Enteric capsule drug delivery technology utilizes a pharmaceutical-grade cellulosic enteric formulation as an aqueous dispersion to produce capsule shells by conventional capsule manufacturing technology pin-dipping. The enteric properties of capsules have been evaluated in vitro and the results shown to comply with pharmacopeial disintegration and

CPH Worldwide
October 13-15, Madrid, Spain

AAPS
October 25-29, Orlando, FL

The Universe of Pre-filled Syringes and
Injection Devices
November 3-4 Vienne, Austria



GET SALES
LEADS
FROM YOUR
WEBSITE
VISITORS

INSTANTLY
FIND OUT
WHO
WHAT
WHEN &
WHERE
(NOT JUST
"HOW MANY"
VISITORS)



dissolution tests criteria. It has been demonstrated with both in vitro testing and in vivo by human gamma-pharmacoscintigraphy that ECDDT capsules protect EMT from gastric degradation, do not open in the stomach, and provide fast release in the duodenum.


ECDDT represents a new, faster, and easier means for oral delivery of labile entities, such as peptides, nucleotides, live biopharmaceutical products, and vaccines. Integrated enteric functionality in a capsule dosage form enables new possibilities for rapid prototype development and formulation screening, allows rapid testing of in vivo performance and minimizes the risk of out-of-specification events during enteric performance challenges on manufacturing scale-up and stability trials. Avoiding the high temperatures associated with enteric coating application can also enable oral delivery of actives that require enteric protection but are sensitive to thermal degradation.

ECDDT trials are underway to further evaluate the technology's range and application, including oral live biopharmaceutical products, vaccines, and oral peptide products from preclinical to Phase III.

To view this issue and all back issues online, please visit www.drug-dev.com.

REFERENCES

1. Pawar VK, Meher JG, Singh Y, Chaurasia M, Reddy BS, Chourasia MK. Targeting of gastrointestinal tract for amended delivery of protein/peptide therapeutics: strategies and industrial perspectives. *Int J Pharm*. 2014;196:168-183.
2. H2 Pharma Consulting, Ltd. (Maidstone, Kent ME14 5FR, UK).
3. Choonara BF, Choonara YE, Kumar P, Bijukumar D, du Toit LC, Pillay VA. Review of advanced oral drug delivery technologies facilitating the protection and absorption of protein and peptide molecules. *Biotechnology Advances*. 2014;32:1269-1282.

 **Dr. Hassan Benameur** is Senior Director of Pharmaceutical Sciences at Capsugel. He joined Capsugel in 2002 and currently leads the company's pharmaceutical sciences department. Prior to joining Capsugel, he held various positions in Pharmaceutical Research & Development within Therapeutica, SMB Galephar, and Gattefossé. With more than 20 years of expertise in conventional and advanced drug delivery development, Dr. Benameur brings insightful science into innovative dosage forms and uses drug delivery technology to maximize success and reduce attrition in product development, from preformulation to manufacturing using a systematic and rational approach. Dr. Benameur is a lecturer at several academic and industrial symposia and was presented the Academy of Pharmaceutical Science and Technology, Japan Award in 2005. He is a member of several major scientific associations, including AAPS, APGI BCRG, PSTJ, and CRS and scientific academies. He has also authored 40 scientific publications and the inventor of 20 patents. Dr. Benameur is a Chemical Engineer and earned his PhD in Pharmaceutical Sciences from the Free University of Belgium.

Related Taxonomy

- [Features](#)

- [Featured Editorial](#)

Popularity:

This record has been viewed **1335** times.

[NEWS](#)[BACK ISSUES](#)[EXECUTIVE INTERVIEWS](#)[MEDIA PLANNER](#)[RESOURCE DIRECTORY](#)[EVENTS](#)[SEARCH](#)

Click Here for **FREE**
Subscription!

Drug Development
& Delivery

Copyright © 2015 Drug Development & Delivery All Rights Reserved. [Privacy Policy](#) / [Terms and Conditions](#)