



Endeavor®

dream...endeavor...achieve

*If you are serious about your career,
it has to be Endeavor*

→ GMAT®

Graduate Management Admission Test

Karan Nimrani
780 / 800



Not just quantitative reasoning, even Verbal reasoning is based on logical approaches - Endeavor taught me that, and only Endeavor can do that.

Nishant Khatod
770 / 800



Besides me, only Endeavor believed that a low CGPA does not mean you cannot score high on GMAT. The score, and their guidance helped me get into a top 20 MBA despite my low grades.

Dhruvin Parmar
710 / 800



Thanks to Endeavor, I broke the myth that commerce students don't score so high on GMAT. They truly believe in your dream, and teach you how to achieve.

Aditi Vachhani
760 / 800

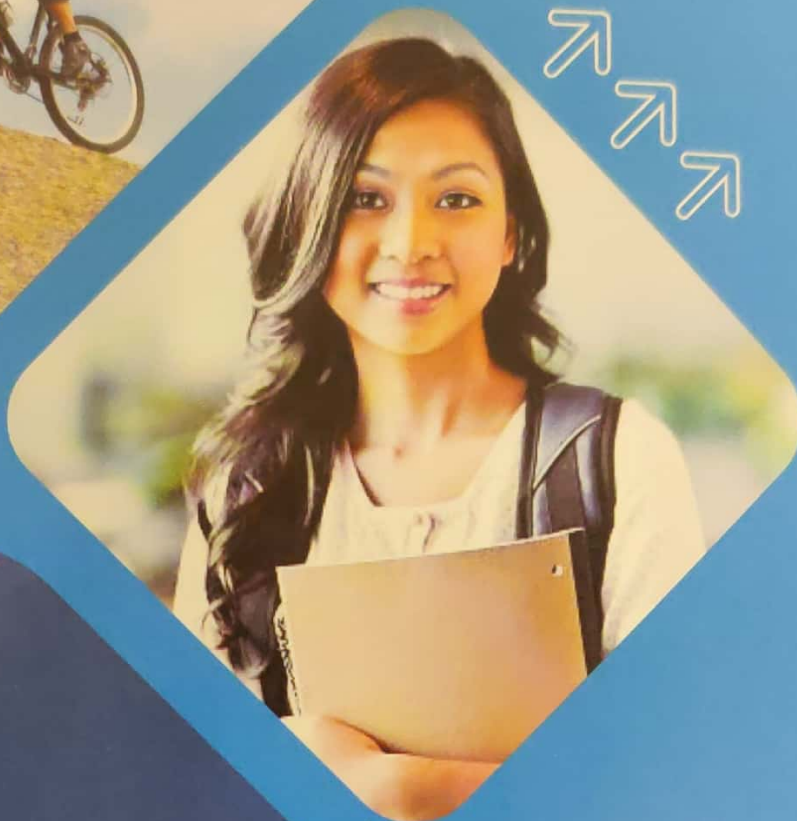
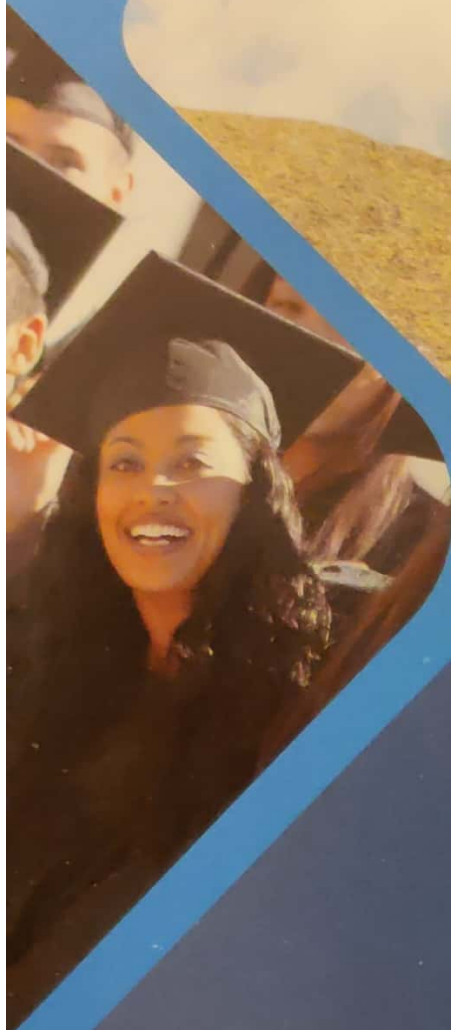


Clear, complete, & comprehensive concepts - and so much variety of practice. I scored so high within just 4 months because of the concepts and confidence I got from Endeavor.

Pushpal Maheshwari
760 / 800



I improved my score by almost 80 points only because of such meticulous guidance at Endeavor - every minor flaw was identified and resolved.



What is GMAT®?

Graduate Management Admission Test (GMAT) is a standardized test that evaluates quantitative reasoning and verbal reasoning skills. The GMAT score is an essential component of your applications to management programs across the world, and a high score increases the chances of your admissions.



Why GMAT®?

Whenever you think of study abroad, the priority for most students is studying in a higher ranked program. After all, a higher ranked program increases your chances of placement, influences your starting salary, and impacts your career over the long term. And all management programs ranked among the top 100 of the world, require a competitive GMAT score. GMAT scores have been interpreted in many ways - as an indicator of your problem solving abilities, your quantitative proficiency, and even your ability to interpret complex data. Not surprisingly, higher GMAT scores often help compensate for a lower than expected academic performance.

GMAT® for fresh Graduates

While most MBA programs outside India recommend some work experience to increase chances of admissions, the alternative for freshers is a Masters in Management, Masters in Finance, Masters in Marketing, Masters in International Business, or Masters in Supply Chain Management. And of course, Masters in Human Resources. These Masters degrees are programs created by top business schools for aspirants with zero experience but a commendable profile, including GMAT scores. So, if you want to study management in a top business school but are not keen on gaining work experience beforehand, the Masters in Management is your entry path.



Selection Process

Program Type	Location	Work Experience?	Tentative Deadlines
MBA	Out of India	Recommended	Fall Intake: Multiple deadlines, last around end of February Spring Intake: Around end of July
Executive MBA	India	Required	April Intake: School specific deadlines, between August to December of preceding year
Masters	Out of India	None	Fall Intake: Multiple deadlines, last around end of February Spring Intake: Around end of July

**For more deadlines and details, visit www.endeavorcareers.com*



GMAT® and its sections

The objective of the GMAT® is to measure:

- ◆ Analytical Writing skills
- ◆ Integrated Reasoning Skills
- ◆ Quantitative Reasoning skills
- ◆ Verbal Reasoning skills



Section Select on GMAT®

Alternative 1	Alternative 2	Alternative 3
AWA (30 minutes)	Quantitative Reasoning (62 minutes)	Verbal Reasoning (65 minutes)
Integrated Reasoning (30 minutes)	Optional Break (8 minutes)	Optional Break (8 minutes)
Optional Break (8 minutes)	Verbal Reasoning (65 minutes)	Quantitative Reasoning (62 minutes)
Quantitative Reasoning (62 minutes)	Optional Break (8 minutes)	Optional Break (8 minutes)
Optional Break (8 minutes)	Integrated Reasoning (30 minutes)	Integrated Reasoning (30 minutes)
Verbal Reasoning (65 minutes)	AWA (30 minutes)	AWA (30 minutes)

< Analytical Writing

The section has one task, Analyze an Argument, to be completed in 30 minutes. This section assesses one's ability to think critically and communicate ideas in a structured format.

< Integrated Reasoning

A section introduced on the GMAT® after specific demand from B-schools, the Integrated Reasoning section contains 12 questions to be answered in 30 minutes. These questions appear in a sequential format, one at a time, but are not adaptive. The questions focus on four different skills:

- < Graphics Interpretation
- < Table Analysis
- < Two-part Analysis
- < Multi-source Reasoning

The section tests the ability to analyse and synthesize data from multiple sources and evaluate them in context to the given questions. Some question types also test the candidate's ability to organise and identify data patterns and the correlation between them.

< Quantitative Reasoning

The Quantitative Reasoning Section contains 31 multiple choice questions of two types to be answered in 62 minutes:

- < Problem Solving
- < Data Sufficiency

The section is adaptive in nature, and tests the ability to reason quantitatively, solve quantitative problems in both pure quantitative as well as real-life settings and interpret graphic data. Overall, proficiency in arithmetic, algebra, geometry and word problems is tested in this section.

< Verbal Reasoning

The Verbal Reasoning section contains 36 multiple choice questions of three types to be answered in 65 minutes:

- < Sentence Correction
- < Critical Reasoning
- < Reading Comprehension

The section is adaptive in nature and tests the ability to reason and evaluate arguments, read and comprehend written material and correct written material to conform to the standards of written English.

< Scoring

For Quantitative Reasoning and Verbal Reasoning, you get a scaled score in the range 0-60. The Quantitative and Verbal Section scores together range from 200 to 800 points in 10-point increments. Integrated Reasoning scores range from 1 to 8 in single digit intervals while Analytical Writing section scores range from 0 to 6 in half-point intervals. The test taker receives Quantitative Reasoning score, Verbal Reasoning score, and Overall score out of 800 along with the Integrated Reasoning scores immediately post test while AWA scores are updated within 10-14 days.



Important Information

- ◆ GMAT® can be taken once every 16 days but not more than 5 times a year.
- ◆ The GMAT® score is valid for 5 years.
- ◆ Exam fees: US \$ 250.
- ◆ The GMAT can be rescheduled by paying a fee of \$60, minimum 7 calendar days before your test date.
- ◆ To register for GMAT, create an account on www.mba.com

Why Endeavor?

Endeavor stands for three things - Quality, Clarity and Determination. Each is a shared effort. Our students dream to break into the top echelons, we provide the clarity and guidance on how to do it, and the determination - both theirs and ours - is what makes the dream a reality. A low score, an average college, a compromise, is never an option. Our mission is a relentless, infallible Ideology - precise guidance and consistent, measured effort can help you scale any heights in your career.

Few things you should know about us:

Exactly on lines of GMAT, we built a standardized pedagogy – our focus on individualized inputs and customized study plans is a part of this standardization. From the classroom course to your post-classroom preparation, and from mentoring you on your queries to assistance with admission applications, we strive to provide the most personalized experience. And finally, just like business schools, Endeavor mixes students from different backgrounds into a single class to enrich your peer learning.



How do we do this

Right Counseling:

Endeavor prides itself on providing the most customized career counseling. Our career advisors rely on admissions data and performance of past students to identify your best fit. That is why, we know the most likely hurdles or delays you might face in your preparation ahead, and we guide you on how to manage these contingencies.

Outstanding Material:

Our material is tougher than the competition because we prepare you for the difficulty level of questions that you encounter as you move up the scores in the adaptive nature of the GMAT®. A thorough focus on accuracy with a calibrated speed-building helps you achieve the score you dream of.

Comprehensive Online Platform:

Endeavor was the first Indian test prep company to provide its own full length tests, not merely free tests available online. Since then, we have expanded to a database that tests you thoroughly on every single concept you might be tested on, during your actual GMAT®.

Personalized Mentoring:

Endeavor provides an outstanding admissions consulting program called Endeavor Education Abroad to complete the loop - to take your journey from GMAT® to admissions. Feedback sessions with your mentors and regular interactions help cater all your doubts - about the test, your applications, or the scope of your chosen program ahead.



Our Course Structure

Endeavor GMAT® Succeed

The Endeavor GMAT® succeed program is a rigorous classroom program aimed at building capabilities to relate simple concepts in complex problems.

Phase I: GMAT® Elementary

The phase involves more than 40 classroom sessions, including class tests and doubt solving sessions, with a focus to develop:

- < Analytical Writing skills
- < Basic Quantitative skills
- < Basic Verbal Reasoning skills
- < Complex Reasoning skills

From basic concepts to advanced applications, you are taught every concept integral to GMAT®. The tests give you a feel of the actual difficulty level of the GMAT®.

Phase 2: GMAT® Acumen

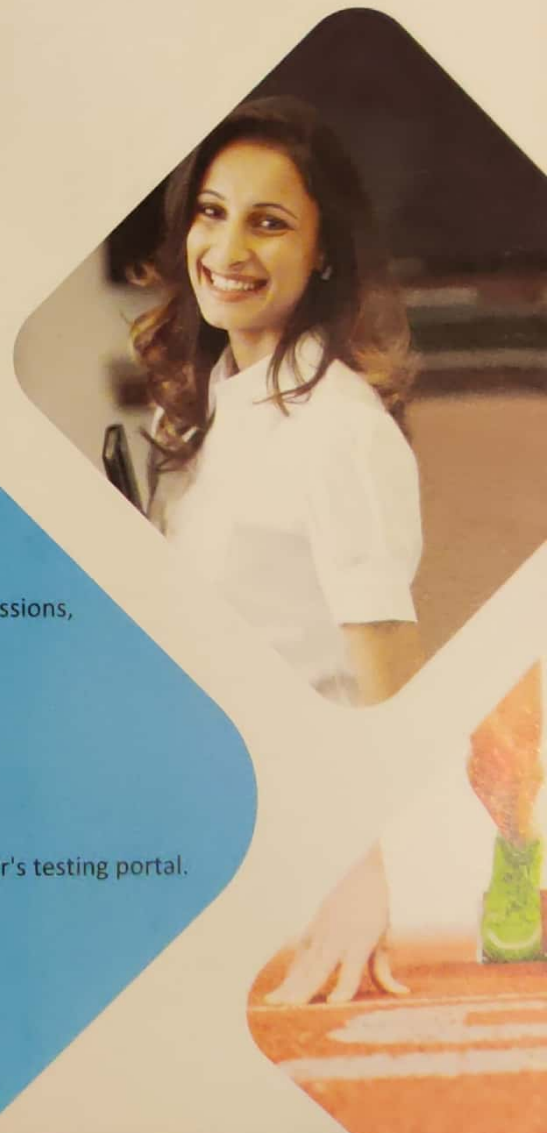
The phase focuses on finding your best test strategy, improving your speed while maintaining your accuracy, identifying and eliminating weaknesses, and planning your tests such that you realize your actual potential.

- < Basic Tests to get acquainted to the exam format
- < Special Sectional Tests to understand and overcome the entire gamut of possible errors
- < Full length Online, Computer Adaptive Practice Tests



The Extra Edge

- ◆ Specially designed Course Material of over 1500 pages to tackle the adaptive nature of GMAT®
- ◆ 15 weeks of exhaustive training including 100+ hours of classroom sessions, interactions, testing and discussions
- ◆ Sessions by Expert and Experienced Faculty Team
- ◆ Regular Mentoring by Experts
- ◆ Personalized Preparation Module & 24 x 7 Performance Monitoring
- ◆ Over 200 hours of online testing through exclusive access to Endeavor's testing portal.
- ◆ More than 10 Full Length Practice Tests under simulated conditions
- ◆ Exclusive in-house Computer Testing Lab for simulated practice
- ◆ Additional GMAT® Reference Material
- ◆ Exclusive Reading Room and Well-stocked Library



Your flight starts @

Batch Date:

Batch Days:

Batch Timing:

Fees:

www.endeavorcareers.com

Endeavor Centres

Ahmedabad

1st Floor, Suyojan Towers,
Near Hotel President, Off CG Road,
Ahmedabad 380009
Contact: 079 - 26464053 / +91 8980805868

Bangalore - Jayanagar

23, 1st Floor, Vasavi Plaza,
Near Cool Joint, 11th Main,
Jayanagar, Bangalore 560041
Contact: 080 - 41310888 / 41550888

Bangalore - Koramangala

Transpade Towers, Jyothi Nivas Road,
Koramangala Industrial layout, 5th Block,
Koramangala, Bangalore 560095
Contact: 080 - 43007712 / 43007713

Bhopal

131 / 10, Golden Tower, Near Pragati
Petrol Pump, Beside Rajpal Honda,
MP Nagar Zone 2, Bhopal 462011
Contact: 0755 - 4009501 / +91 6261273144

Bhubaneswar

A-102, Janaki Bhawan,
Nayapalli, Bhubaneswar 751012
Contact: 0674 - 2561114 / +91 9437155330

Gandhinagar

302, Swagat Rain Forest - I, Block A,
Opp Pratik Mall, Gandhinagar 382007
Contact: 079 - 23600050 / +91 9512268010

Jaipur

312-313, 3rd Floor, Sunny Paradise,
Near Big Bazaar, Tonk Road,
Jaipur 302015
Contact: 0141 - 2709341 /
+91 9549332248

Kanpur

117/H1/365, 1st Floor, Above SBI Bank,
Near Ksheer Chouraha, Pandunagar,
Kakadeo, Kanpur 208002
Contact: +91 8081442233 / +91 8808017100

Kolkata

1st Floor, Shree Manjari, 1/1 Camac Street,
Near Camac Street - Park Street Crossing,
Kolkata 700016
Contact: 033 - 40735191 / +91 9674935191

Mumbai - Borivali

Office No. 9-10, 4th Floor,
Pantaloons Building, Opp Borivali Station
Platform No. 1, Opp Gokul Shopping Center,
Borivali (W), Mumbai 400092
Contact: +91 9029064515 / 35

Mumbai - Dadar

40- 45, 1st Floor, Rajaram Estate,
Rajaramseth Lad Chowk,
Near Dadar East Railway Station,
Dadar (E), Mumbai 400014
Contact: 022 - 24116600 / +91 9004469889

Mumbai - Thane

501, 5th Floor, Thakor Niwas,
Opp Thane Station West,
Near Thane Post Office, Thane 400601
Contact: 022 - 41009898 / 41319898 /
+91 9920076435

Mumbai - Vashi

301, 3rd Floor, Arenja Arcade,
Above Domino's, Near Kshirsagar Restaurant,
Sector 17, Vashi, Navi Mumbai 400703
Contact: 022 - 41238989 / +91 7666587770

Mumbai - Vile Parle

Shree Natraj Building, N S Road No. 2,
Opp Bhaidas Auditorium, JVPD,
Vile Parle (W), Mumbai 400056
Contact: +91 8655267788 / 7888

New Delhi - Connaught Place

4th Floor, H-11A, Block H,
Middle Circle, CP, Delhi 110001
Contact: 011 - 49405833 / +91 8800884082

New Delhi - North Campus

2531-A, 1st Floor, Hudson Lane,
Kingsway Camp, GTB Nagar,
New Delhi, Delhi 110009
Contact: 011 - 49067171 / +91 9205071771

Pune - Law College Road

1st Floor, Tandale Heights, 815, Shivaji Nagar,
Near German Bakery Wunderbar,
Law College Road, Pune 411004
Contact: +91 9028014802 / 4 / 5 / 6

Pune - Pimple Saudagar

401, Ganeesham - E, Beside Gold's Gym,
Near Govind Garden Chowk,
Pimple Saudagar, Pune 411004
Contact: +91 9028010133

Rajkot

3rd Floor, Kings, Opp Punjab Honda,
Near G T Seth School, Kalawad Road,
Rajkot 360001
Contact: 0281 - 6555525 / +91 7228008434

Surat

UL/45-48, Pooja Abhishek, Opp SPB College,
Athwa Lines, Surat 395001
Contact: 0261 - 4041717 / 2211948

Vadodra

316, Atlantis, Opp Vadodra Central,
Sarabhai Road, Vadodra 390016
Contact: 0265 - 2341992 / +91 9033100222

Vallabh Vidhyanagar

1st Floor, Dawat Complex,
Above Yes Bank, Bhaikaka Circle
Vallabh Vidhya Nagar 388120
Contact: 02692 - 233511 / +91 8000053206