



TAUBER-ARONS, INC.

Industrial Auctioneers & Liquidators since 1892

PUBLIC AUCTION

By Order of U.S. Bankruptcy Court, Apogee Containers, Inc.

A P O G E E

MAJOR BLOW MOLDING OPERATION (19) BLOW MOLDERS AS LATE AS 2010

2010



FEATURING EQUIPMENT

- *Nissei & Sidel Stretch Blow Molders*
- *Bekum Blow Molders*
- *Molds*
- *Plastics Equipment*
- *Fabrication Equipment*

Wednesday, May 21st at 10:30 a.m.

510 Alcoa Circle, Corona, CA

INSPECTION: Tues., May 20th, 9:00 a.m. to 4:00 p.m. and Morning of the Sale

For An Auction Calendar Visit Our Website:

www.tauberaronsinc.com

323-851-2008 • 888-648-2249

Register to bid at:

BidSpotter.com

Your portal to LIVE Auction Action

Sale Conducted by:



TAUBER-ARONS, INC.
Industrial Auctioneers & Liquidators since 1892

www.TAUBERARONSINC.com



www.BIDITUP.com



www.REICHBROS.com



www.CRGAUCTION.com

Brochure Designed & Dedicated to the Memory of Craig F. Tucker

(19) BLOW MOLDERS AS LATE AS 2010

STRETCH BLOW MOLDERS

(November 2010) Nissei Mod. ASB-70DPH, Biaxial Stretch Orientation Blow Molder, 8-Cavity, 4-Blow, w/ Pro-Face Controls, Mod. 35 Injection Unit S/N 1364, Hopper/Feeder, **Walton Stout** Mod. WSD-185-Hi-Heat, Vacuum Loader S/N 5799-A1-2-02, (2) Sterlco Mod. F6016-MX 400 Degree Temp Controllers. S/N 329A60983 (**Very Low Hours**)

(2006) Nissei Mod. PF8-4B, Biaxial Stretch Orientation Blow Molder, 8-Cavity, 4-Blow w/ **Walton Stout** Mod. WSD-185-Hi-Heat Vacuum Loader S/N 5799 A-1, Mod. 35 Injection Unit, Proface Controls, Hopper/Feeder, Color Matrix Liquid Colortrant Feeder

(1994) Sidel Mod. SBO 4/6 Four, Four Station Rotary Stretch Blow Molder, w/ Bottle Feeder, 8-Zone Oven, 1900 DAN, (1994) **Anduze** Elevator Conveyor, Two-Step, 6-Heating Modules, 10 Ton Closing Force, w/ "NEW" 6' Offeed Conveyor (Recent Partial Rebuild). S/N 244

Nissei 650NHII (Converted to Nissei 650EX Specs), 6500 Stretch Blow Molder, New Touch Screen Controller, **Walton Stout** Dryer, Vacuum Loader

(7) (1991) Nissei Mod. 650NHII, 650 Ton Stretch Blow Molders (7 in Storage located one mile away at 341 Bonn E. Circle, Corona, CA)

2010



Nissei ASB-70DPH Biaxial Stretch Blow Molder

2006



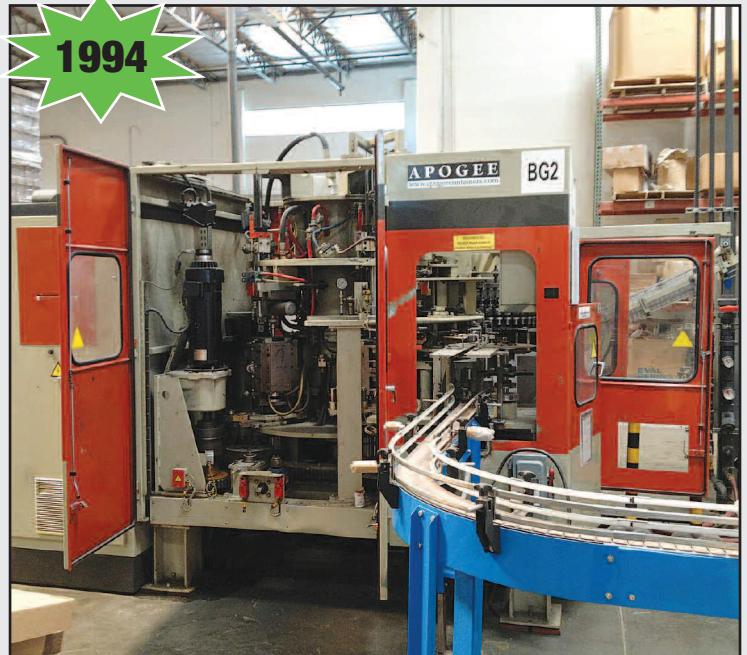
Nissei PF8-4B, Biaxial Stretch Blow Molder

1991



Nissei 650NHII Stretch Blow Molder

1994



Sidel SBO 4/6 Rotary Stretch Blow Molder

INSPECTION: Tues., May 20th, 9:00 a.m. to 4:00 p.m. and Morning of the Sale

BEKUM BLOW MOLDERS

BLOW MOLDERS

(1996) Bekum Mod. BM304D, Single Extrusion, Dbl. Die Blow Molder, w/ **(2008) BMC Controls**, 3-Nozzle Head, 4-Cylinder Takeaway, Triple Cavity Molds, Stainless Steel Overhead Platform & Doors, Integral Leak Detector, Auto. Takeout, **(2008) Efficient A.C. Motors & Drives**, **(1997) Piovan Mod. C30iX Hopper/Feeder** S/N 3AL-6410, Mod. 601, 60 HP Extruder S/N 0524400329, Rittal A/C Unit, **Dynacon Mod. UPM Conveyor**, Bosch Accumulator, Spengler Electronic Ionisator. S/N 2003050024

(1989) Bekum Mod. BM-303D, Single-Extrusion, Dbl. Die Blow Molder, w/ Mod. PR30T Controls, Stainless Steel Overhead Platform & Doors, Integral Leak Detector, Auto. Takeout, **(2008) Efficient A.C. Motors & Drives**, 3-Nozzle Head, Dual Cylinder Takeaway, 13 Heating Zones, Mod. 601, 60 HP. Extruder S/N 52440246, 6' Takeoff Conveyor, **(1996) Piovan Mod. C30iX Hopper/Feeder** S/N 2AL6086-6367, Rittal A/C Unit, Delta Mod. VFD-B Drive. S/N 100265081

(1990) Bekum Mod. H121D, Single Extrusion, Dbl. Die Blow Molder, Stainless Steel Overhead Platform, PLC Controlled, Mod. S-70 Extruder S/N 952441-5-101.3, 2.38 Belt Drive Ratio, 4.58 Total Ratio PVL, **Novatec Mod. AF-1 Motor Speed Control**, **(1997) Piovan Mod. C30iX Hopper/Feeder** S/N 3AL-6408, Bunting Magnetics, Magnetic Separator. S/N H-121-D-203-5

(1986) Bekum Mod. BM-203D, Single Extrusion, Dbl. Die Blow Molder, Stainless Steel Overhead Platform & Doors, Integral Leak Tester, Auto Takeout, w/ Mod. PR30T Controls, 2-Nozzle Head, Mod. S601 Extruder S/N 52440177, Rittal A/C Unit, **Piovan Hopper/Feeder**. S/N 100265047

(1984) Bekum Mod. H111D, Single Extrusion, Dbl. Die Blow Molder, Stainless Steel Overhead Platform & Doors, **(2008) A.C. Motor & Drives**, w/ Mod. PR30T Controls, 2-Nozzle Head, Mod. S631 40 HP Extruder S/N 31879447, **(1999) Piovan Mod. C30iX Hopper/Feeder**, 15 Zone. S/N 26825507

(1986) Bekum Mod. H111D, Single Extrusion, Dbl. Die Blow Molder, Stainless Steel Overhead Platform & Doors, **(2008) A.C. Motor & Drives** w/ Mod. PR30T Controls, 2-Nozzle Head, EMI 24" Takeoff Conveyor, Mod. S631, 40 HP Extruder S/N 104992588, **Piovan Mod. C31X Hopper/Feeder**, Whitlock Mod. SRI-02 Vacuum Hopper. S/N 26825545

(1983) Bekum Mod. H151D, Single Extrusion, Dbl. Die Blow Molder, Recent Upgrade w/ **(2008) Efficient A.C. Motors & Drives**, Stainless Platform & Doors w/ **(2008) Mod. AVG EZ Series Touchscreen Controls**, 2-Nozzle Head, EMI 24" Takeoff Conveyor, 60 HP Extruder, Foremost Hopper/Feeder. S/N 62975.5.037

(1979) Bekum Mod. H121D, Single Extrusion, Dbl. Die Blow Molder Recent Upgrade w/ **(2008) Efficient A.C. Motors & Drives**, Stainless Platform & Doors, w/ **(2008) AVG EZ Series Touchscreen Controls**, 3-Nozzle Head, EMI 24" Takeoff Conveyor, **Fasti Farragtech Resin Dryer**, A/C Unit, 60 HP Extruder, **(1997) Piovan Mod. C30iX Hopper/Feeder** S/N 3AL6407. S/N 278168

(11) Extra Blow Mold Heads, (7) Cabinets of **Bekum, Nissei** and **Sidel** Spare Parts.



Bekum BM304D Dbl. Die Blow Molder, w/ (2008) BMC Controls



Bekum H111D Dbl. Die Blow Molder



Bekum H151D Dbl. Die Blow Molder



Views of Bekum H121D Dbl. Die Blow Molder



TO BID ONLINE

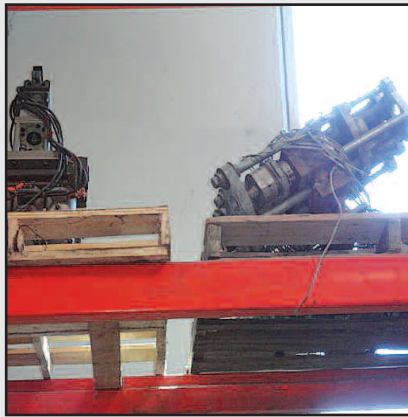
With BidSpotter.com, you can bid on items in auctions from anywhere in the world! Bid from the convenience of your home or office! Real time internet bidding and audio No special software needed, use your browser!

To register to bid in the Tauber Arons, Inc. auction, please visit us at www.bidspotter.com or call (219) 348-2437

LOCATION: 510 Alcoa Circle, Corona, CA



View of Molds



Extra Blow Mold Head



Views of Apogee Mold Completed Bottles



HDPE MOLDS – BEKUM

1 Litre/32oz 38mm 6 Cavity; 1 Litre/32oz 38mm 4 Cavity; 1 Litre/32oz Dosing Cap/Buttress Neck 4 Cavity; 500mL 38mm 4 Cavity; 16oz 38mm 6 Cavity; 15.2oz 38mm 6 Cavity; 32oz 28mm Handware 4 Cavity; 8oz 28mm Round 4 Cavity; 32oz F Style 28mm 4 Cavity; BirdBall/Disk – 2 Cavity; 1 Gal w/ Handle 2 Cavity; 1 Litre Boston Round 4 Cavity; 1 Litre Round Cavity; 1 Litre Ajax Cavity; 2oz Boston Round 4 Cavity; 4oz Boston Round 2 Cavity; 6oz Boston Round 2 Cavity; 8oz Oval 4 Cavity; 8oz Boston Round 2 Cavity; 8oz Round w/ Square Shoulders 2 Cavity;

8oz Cylinder Round 2 Cavity; 8oz Cylinder Round w/ Square Shoulders 2 Cavity; 8oz Oval 2 Cavity; 9oz Oval 2 Cavity; 12oz Cylinder Round Square Shoulders 4 Cavity; 14oz Baby Oil 4 Cavity; 15oz Cylinder Round 2 Cavity; 15oz Round Square Shoulders 4 Cavity; 16oz Oval 4 Cavity; 16oz Cylinder Round Square Shoulders 2 Cavity; 18oz Bullet Cylinder Round; 24oz Cylinder Round 2 Cavity; 24oz Cylinder Round 4 Cavity; 32oz Cylinder Round Radius Shoulders 4 Cavity; 32oz Cylinder Round Slanted Shoulders 4 Cavity –

Label Protect; 32oz Cylinder Round Slanted Shoulders 4 Cavity; 32oz Cylinder w/ Handware 6 Cavity; 64oz Dishwashing Detergent w/ Handware 2 Cavity; 64oz Cooking Oil w/ Handware 2 Cavity; 100mL Square Oval 2 Cavity; 250mL Oval Lotion Bottle 4 Cavity; 300mL Cylinder Round w/ Square Shoulders 6 Cavity; 300mL Cylinder Wound w/ Square Shoulders 2 Cavity; 300mL Fructis Round 6 Cavity; 350mL Bullet 4 Cavity; 500cc Cylinder Round (Spin Trim Neck)

PET MOLDS – NISSEI: 42oz 89mm Widemouth 55gr 4 Cavity

PET MOLDS – SIDEL: 1.75L 33mm 4 Cavity Kirkland Signature Margarita Mix, 1.75L 33mm 4 Cavity Liquor; 33mm Tooling; 28PCO Tooling

MISC. MOLDS

11oz 22mm Custom Fuel Additive – Long Neck 33gr.; 32oz Lucas Oil HDPE 6 Cavity; Kirkland Spice 6 Cavity PET; 37oz 89mm Widemouth 55gr 4 Cavity Cold Mold; 1 Gal Handware 2 Cavity No Glug Design; 4L 50mm Custom Oil 2 Cavity;

5L 50mm Custom Oil 2 Cavity; 6L 50mm Custom Oil 2 Cavity; 32oz 28MM Handware 4 Cavity; 15.2oz 38mm 6 Cavity; 2oz 22mm 4 Cavity; 3oz 33mm 4 Cavity; 37oz 89mm Widemouth 55gr 4 Cavity

PLASTICS EQUIPMENT

(3) **Foremost** Mod. DI-2, 25 HP Scrap Grinders w/ Elevator and Hopper. S/N's 36480, 37064, N/A

(2) **Cumberland** 25 HP Scrap Grinders. S/N 4210007817; N/A

(2) **Foremost** Mod. MB2000, 4'X 4' Hopper/Loader Systems. S/N 37065, 36481

(2) **Foremost** Mod. MB400, Hopper/Loaders. S/N 23792, N/A

(3) **Delta** Mod. ODK 200, Pressure Tester w/ Conveyor. S/N's 0170074 (w/ Bekum BM304D) 0170075 (w/ Bekum BM303D), N/A (w/ Bekum BM203D)

Adaptive Engineering and Fabrication Vacuum/Hopper Loader System w/ (2) Silos and **Conair Franklin** Hopper.

Adaptive Vacuum/Hopper Loader System w/ Hopper.



(3 Available) Views of Foremost DI-2 Scrap Grinders



Walton Stout WSD-185 Vacuum Loader

For more Information, visit our website at: www.tauberaronsinc.com

FABRICATION EQUIPMENT

Lagun Mod. FTV-2, 2 HP Vari. Speed Vertical Mill w/ **Acu-Rite** DRO's, Kurt Table Vise. S/N 22042

Webb 17" X 60" Gap Bed Engine Lathe, 3-Jaw Chuck.

MSC Mod. 951463, 24" Vertical Band Saw w/ Butt Welder. S/N 845090

Miller Mod. Millermatic 300, 300 Amp Arc Welder.

Miller Mod. Syncrowave 250, 250 Amp Heli-Arc Welder.

Mitsui Mod. 205MH, 6" X 18" Manual Surface Grinder. S/N 80071621

Othenberger Mod. 2000, Pipe Threader.

Dake Mod. SE712, 7" Horizontal Band Saw.

Cuttermaster Tool Grinder, (2) Burr King Dbl. End Grinders, **Burr King** 1" Vertical Belt Sander, **Mac** Blast Cabinet, **Amrox** Mod. DG20, 20 Ton "H" Frame Press, Mod. 4 Arbor Press, Tradesmen 16 1/2" Bench Drill Press, 3' X 4' Granite Surface Plate, Miscellaneous Shop and Office Equipment.



Webb 17" X 60" Gap Bed Engine Lathe

AIR COMPRESSORS

(2) (2001) **Belliss & Morcom** Mod. VH9H3N, 150 HP, 650 PSI, High Pressure Air Compressors. S/N N/A; 9375

Hankison Mod. HPRD-1.5-700, Air Dryer. S/N H16958

Trane Mod. RTHB130FLF Series R Sentramatic, 150 Ton Chiller System w/ **Evapco** Cooling Tower. S/N U98608735

Gardner & Denver Mod. ECMQLC, 60 HP Rotary Screw Air Compressor. S/N M24928

Gardner & Denver 40 HP Rotary Screw Air Compressor.

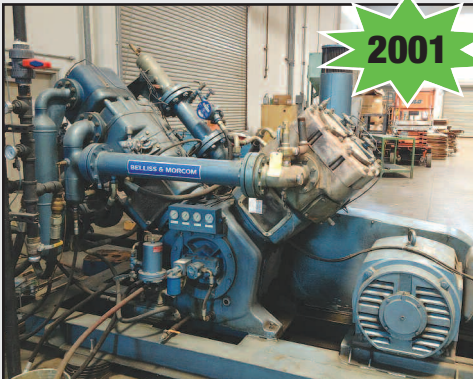
(1992) **Ingersoll Rand** Mod. U15H-SP, 15 HP Rotary Screw Air Compressor. S/N 1CC5T1U92F

Gardner & Denver 15 HP Rotary Screw Air Compressor.

Hankison Mod. HPRP750, Air Dryer. S/N WH750B460020504

Air Receiving Tank.

180 Gal. 750 PSI High Pressure Tank



Belliss & Morcom VH9H3N High Pressure Air Compressors



Trane 150 Ton Chiller



Gardner Denver Rotary Screw Air Compressor

MISCELLANEOUS

Toyota Mod. 42-6FGCU25, 5000 Lb. L.P.G. Forklift. S/N 77046

(3) (2004) **Columbian** 80000 Lb., 3000 Cu. Ft. Resin Silos.

Steffes RO System.

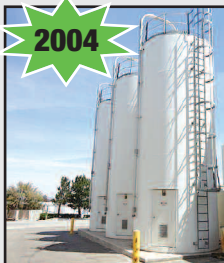
(3) **Steffes** Port. Leak Detectors w/ Bottle Accumulation.

Fairbanks 5000 LB. Digital Platform Scale.

Color Matrix Mod. CM2000, Color Metering System, **ALPS** Mod. SC110, Leak Tester w/ 6" X 24" Belt, (4) Sections 20' High Pallet Racking, 3M Case Sealer, (4) Shop Fans, Incline Belt Conveyor, Spin Trimmer.



Toyota 5000 Lb. L.P.G. Forklift



80,000lb Resin Silos



Finished Goods Trailer



Views of Finished Goods Inventory



PUBLIC AUCTION

By Order of U.S. Bankruptcy Court, Apogee Containers, Inc.

APOGEE

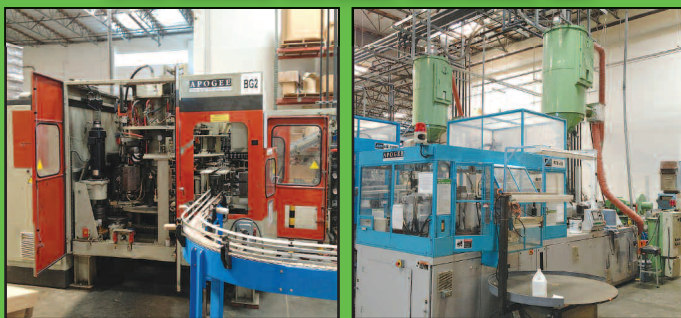
MAJOR BLOW MOLDING OPERATION

(19) BLOW MOLDERS AS LATE AS 2010

Featuring: Nissei & Sidel Stretch Blow Molders,
Bekum Blow Molders & Molds

Wednesday, May 21st at 10:30 a.m.

510 Alcoa Circle, Corona, CA



TAUBER-ARONS, INC.

Industrial Auctioneers & Liquidators since 1892

13848 Ventura Boulevard • Sherman Oaks, CA 91423

Phone: (323) 851-2008 • (888) 648-2249

Fax: (818) 933-0782

<http://www.tauberaronsinc.com>

E-mail main@tauberaronsinc.com

PUBLIC AUCTION

By Order of U.S. Bankruptcy Court, Apogee Containers, Inc.

APOGEE

MAJOR BLOW MOLDING OPERATION (19) BLOW MOLDERS AS LATE AS 2010

Featuring: Nissei & Sidel Stretch Blow Molders,
Bekum Blow Molders & Molds

Wednesday, May 21st at 10:30 a.m.

510 Alcoa Circle, Corona, CA

WEBCAST BIDDER INSTRUCTIONS

All Internet Bidders Must Register For This Auction At
www.bidspotter.com At Least 48 Hours Prior To The Sale Date.

If You Do Not, You Will Not Be Approved.

There Is A 18% Buyers' Premium In Effect For All Online Purchases.

We Highly Recommend That Potential Buyers Attend This
Auction & Bid Live Onsite. This Will Give You The Ability To
Inspect The Items & Fully Appreciate Their Condition Along With
Saving You 3% Of The Buyers' Premium.

***No Last Minute Registrations Will Be Accepted.
Make Sure To Register No Later Than 48 Hours Prior
To The Start Of The Auction.***

DIRECTIONS

From Downtown Los Angeles, take I-60E to the CA-71S to CA-91E. Take the Lincoln Avenue exit. Turn right onto S. Lincoln Ave. Turn left in W. Rincon St. Turn left onto Alcoa Circle. Sale site will be on the right!

TERMS OF SALE

15% BUYERS' PREMIUM. A deposit of 25% in cash, cashier's check, or company check is required of each bidder for deposit only. Total to be paid within time specified by auctioneer in cash, cashier's check, or wired funds before removal of purchase. All purchases must be removed within period announced by auctioneer. All descriptions are believed to be correct, but no guarantees or warranties are made by auctioneer as to nomenclature or age. Everything sold on an "as is" basis. ALL SALES WILL BE SUBJECT TO LOCAL & STATE SALES TAX. A BUYERS' PREMIUM WILL BE COLLECTED ON ALL PURCHASES.

BID ONLINE

With BidSpotter.com, you can bid on items in auctions from anywhere in the world! Bid from the convenience of your home or office! Real time internet bidding and audio-No special software needed, use your browser! To register to bid in the Tauber Arons, Inc. auction, please visit us at www.bidspotter.com or call (219) 348-2437.

CHECKOUT

May 22nd through May 30th, 8:00 a.m. to 4:00 p.m.