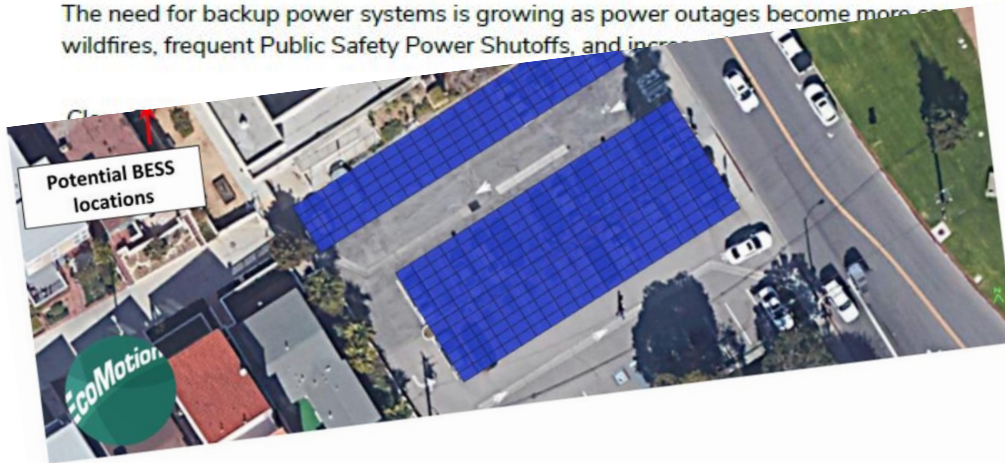


CPA's Power Ready Program

A CPA member agency benefit program that provides critical back-up power to a facility

What is Power Ready?

The need for backup power systems is growing as power outages become more common due to wildfires, frequent Public Safety Power Shutoffs, and increasing demand.



BESS Size and Location

Our initial optimization suggests an ideal battery size of approximately 133kW / 533 kWh. The facility has an annual peak kW demand of 142k W; through SGIP, a battery with 4-hour discharge may be sized up to 142kW / 568kWh. The facility is not located in a DAC or HFTD, and thus qualifies for the baseline SGIP incentive (currently \$350/kWh).

- Member agency staff learn about hosting battery storage

BESS: Battery Energy Storage System

DAC: Disadvantaged Community

HFTD: High Fire Threat District