

# Joseph McFee Center

A Transformational Living Community



SAN FRANCISCO

# THE WAY OUT

LIVE. WORK. LOVE.





# About the Joseph McFee Center

The Joseph McFee Center is a two year recovery housing program for San Franciscans exiting residential treatment or therapeutic communities. The program cultivates a transformative community based on the principles of recovery, accountability, and service. It fosters lifelong change by promoting positive values and behaviors through peer interaction, instruction, and community service.

## The Program

- 2 Years of Recovery Housing
- Onsite Supportive Services
- Individualized Case Management & Life Skills
- Career & Workforce Development
- Community Engagement & Family Reunification
- Savings Program
- Permanent Housing Assistance
- Target Population: Adults who have completed residential drug treatment or a Therapeutic Teaching Community.

## Questions & Referrals:

Kaela O' Brien

Director, Joseph McFee Center

[Kaela.O'Brien@usw.salvationarmy.org](mailto:Kaela.O'Brien@usw.salvationarmy.org)

## Key Goals

- Strengthen The Way Out's Recovery System of Care
- Improve Long-Term Recovery Outcomes
- Foster Lifelong Success
- Financial Stability & Independent Living

## About the Site

The 83 beds facility is located in San Francisco's picturesque Mission District and is equipped with a commercial kitchen, screening room, library, dining room, recreation and weight room, classroom and training center, staff office, and reception.

# Reception/Lobby



# Bedrooms

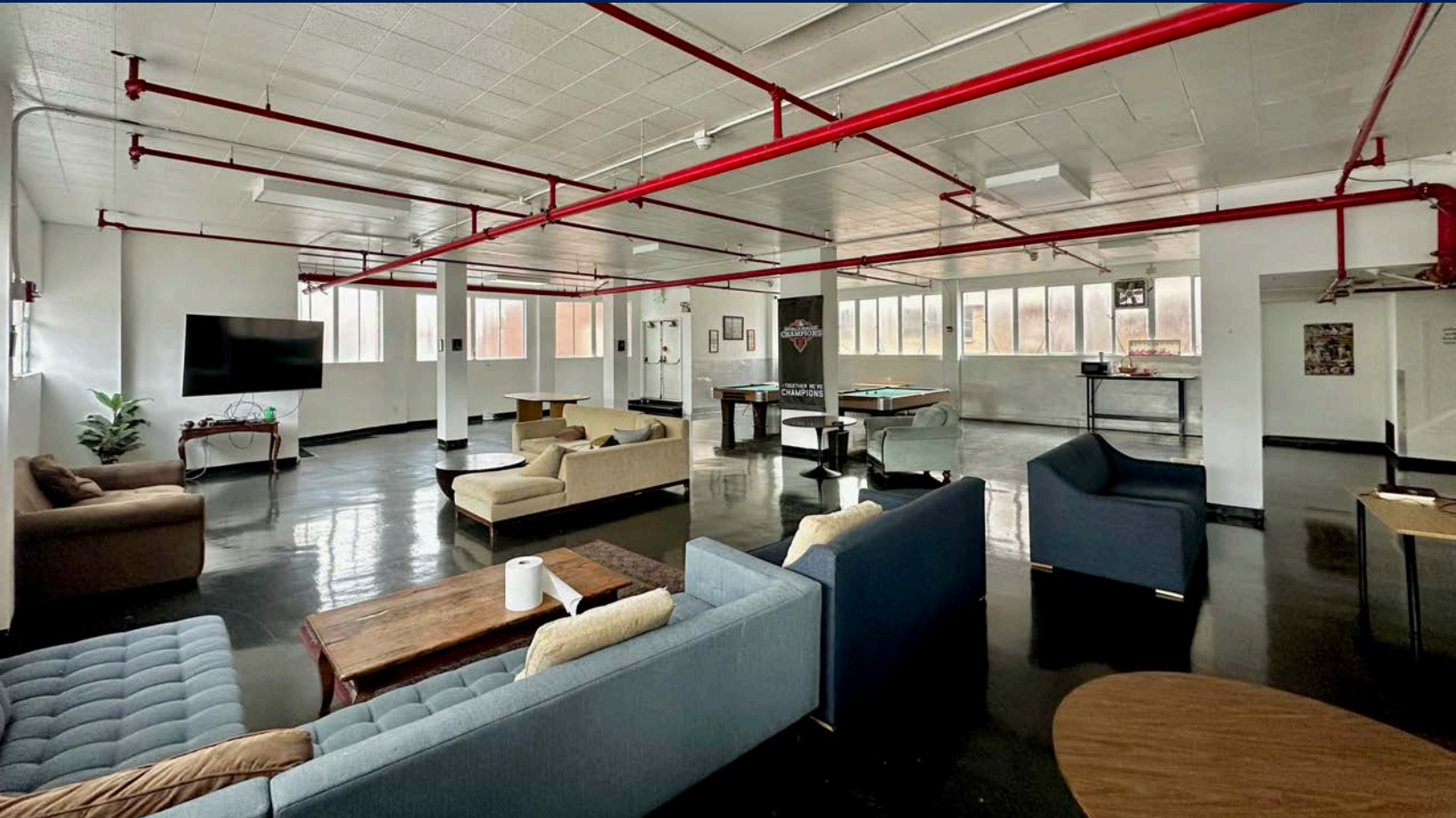
**49 units**

A mix of single, double, and triple occupancy



# Recreation Room

Pool Tables, TVs, Canteen



# Gym

## Weights and Aerobic Equipment

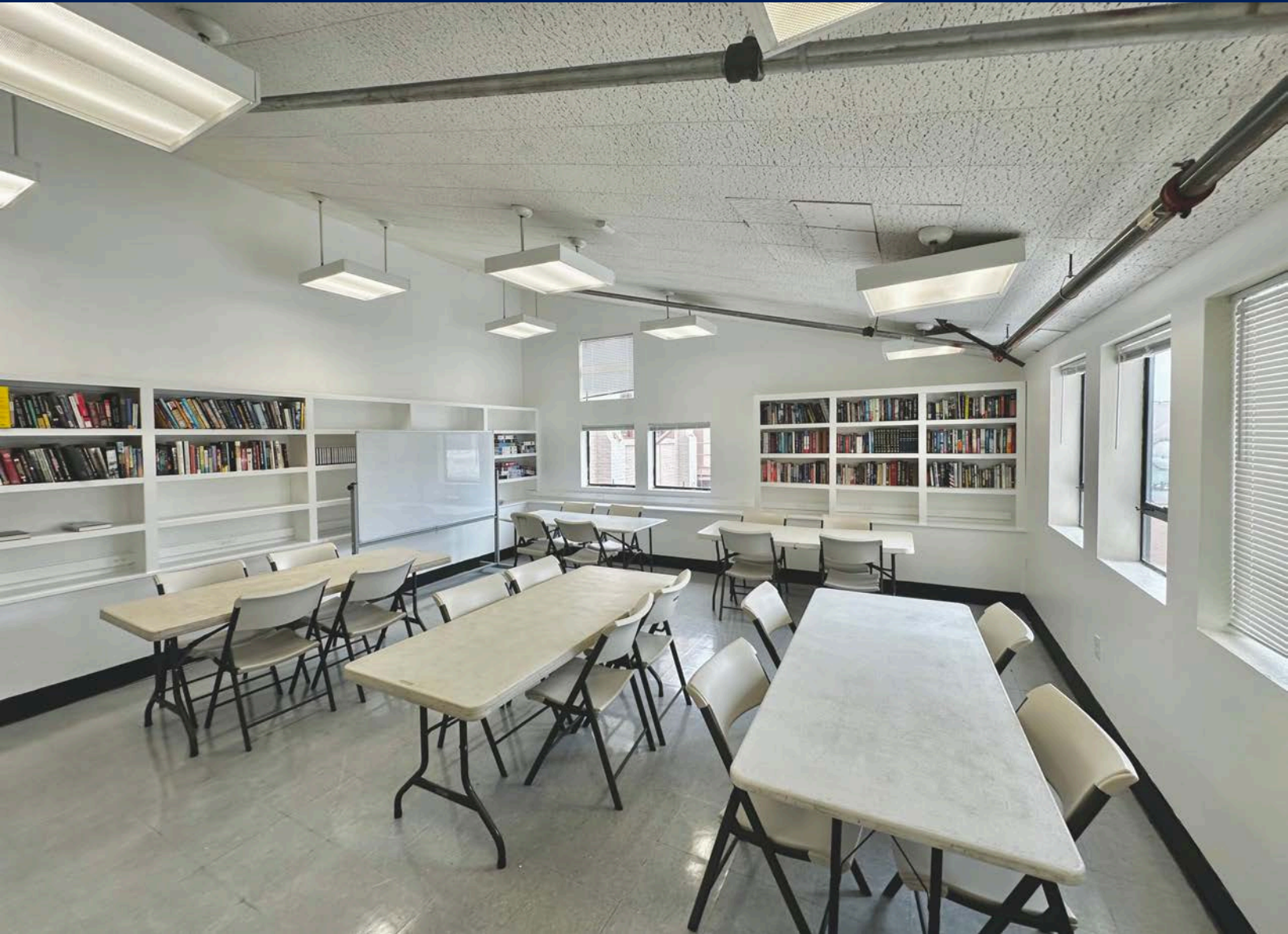


# Learning Center

## Adult Educational and Vocational Training



# Multipurpose Room



# Cafeteria



# Conference Rooms



# Current Renovation Projects

We continue to invest in the Joseph McFee Center to improve the facility and enhance the transformational living community

Screening Room

Library

Group Room

New Flooring—Residential Areas

Commercial Kitchen



To learn more about or get involved with  
The Way Out please visit:

**TheWayOutSF.org**

**Contact:**

Steve Adami  
Executive Director, The Way Out  
[steve.adami@usw.salvationarmy.org](mailto:steve.adami@usw.salvationarmy.org)

Destiny Pletsch  
Deputy Director, The Way Out  
[destiny.pletsch@usw.salvationarmy.org](mailto:destiny.pletsch@usw.salvationarmy.org)



Scan to Learn More  
About The Way Out



Scan to Make an Impact  
On Your Community



DOING THE  
MOST GOOD®